



**ABBREVIATIONS**

AAC	ALASKA AEROSPACE CORPORATION	GA	GAGE	POR	PORCELAIN TILE
ABV	ABOVE	GB	GALVANIZED	LB #	POUNDS PER SQUARE FOOT
AF	ACCESS FLOOR	GC	GALVANIZED STEEL	PSF	POUNDS PER SQUARE INCH
AP	ACCESS PANEL	GEN	GENERAL CONTRACTOR	PCC	PRECAST CONCRETE
ACOUS	ACOUSTICAL	GL	GLASS	PJ	PRECAST WALL JOINT
APC	ACOUSTIC PANEL CEILING	GOVT	GOVERNMENT	PRFAB	PREFABRICATED
AWC	ACRYLIC WALL COVERING	GT	GROUND	PTE	PRESSURE TREATED
ADJUST	ADJUSTABLE	GB	GRAB BAR	PP	PRIME PAINT
A/C	AIR CONDITIONING	GR	GRADE	PROJ	PROJECT
ALUM	AIR HANDLING UNIT	GRL	GRILLE	QTY	QUANTITY
AL ALUM	ALUMINUM	GND	GROUND	QT	QUARRY TILE
ALT	ALTERNATE	GR	GRADE	RAD, R	RADIUS
ADA	AMERICANS W/ DISABILITIES ACT	GYP	GYPSON	RCP	RECEPTACLE
AB	ANCHOR BOLT	GWB	GYPSON WALLBOARD	REC	RECESSED
L	ANGLE	HDR	HEADER	RECT	RECTANGULAR
ANOD	ANODIZE	HDR	HEADER	REF	REFERENCE
APPROX	APPROXIMATE	HDR	HEADER	RCP	REFLECTED CEILING PLAN
AE	ARCHITECT/ENGINEER	HDR	HEADER	REFR	REFRIGERATOR
ARCH	ARCHITECT	HDR	HEADER	REIN	REINFORCING
ASSY	ASSEMBLY	HDR	HEADER	REM	REMOVABLE
ASPH	ASPHALT	HDR	HEADER	REMOVED	REMOVED
@		HDR	HEADER	REQD	REQUIRED
BKS	BACKSPLASH	HDR	HEADER	REIN	REINFORCEMENT
BM	BEAM	HDR	HEADER	RES	RESILIENT FLOOR
BRG	BEARING	HDR	HEADER	RF	RETURN AIR
BTW	BETWEEN	HDR	HEADER	REV	REVISION / REVISED
BF	BIFOLD	HDR	HEADER	RIG	RIGID
BLK	BLOCKING	HDR	HEADER	RHT	RIGHT HAND
BD	BOARD	HDR	HEADER	RHS	RIGID INSULATION
BLT	BOLT	HDR	HEADER	R	RISER, RADIUS
BND	BOND	HDR	HEADER	RD	ROOF DRAIN
BS	BOTH SIDES	HDR	HEADER	RM	ROOM
BOT	BOTTOM	HDR	HEADER	RO	ROUGH OPENING
B.O.	BOTTOM OF	HDR	HEADER	RND	ROUND
BRK	BRICK	HDR	HEADER	RBR	RUBBER
BRZ	BRONZE	HDR	HEADER	RUB	RUBBER TILE OR ROLL FLOORING
BLDG	BUILDING	HDR	HEADER	INT	INTERIOR
BL	BUILDING LINE	HDR	HEADER	INT	INTERIOR
BP	BYPASS	HDR	HEADER	INT	INTERIOR
CAB	CABINET	JAN	JANITOR	JAN	JANITOR
CAR	CARPET	JAN CLOS	JANITOR CLOSET	SJ	JANITOR CLOSET
CSWK	CASEWORK	JT	JOINT	S CONC	SEALED CONCRETE
CIP	CAST IN PLACE	JST	JOIST	SLT	SEALANT
CLG	CEILING	KD	KNOCKDOWN	SLR	SEALED VINYL COVE BASE
CEM	CEMENT	KO	KNOCK OUT	SV	SERVICE SINK
CEM PLAS	CEMENT PLASTER	LAB	LABORATORY	SHT	SHEET
CTR	CENTER	LAM	LAMINATE	SV	SHEET VINYL
CL, C	CENTERLINE	LAM	LAMINATE	SVC	SCORED JOINT
C TO C	CENTER TO CENTER	LP	LAMINATED PLASTIC	SH	SEALANT
CT	CERAMIC TILE	LW	LAMINATED WOOD	SH	SEALANT
CHBD	CHALKBOARD	LAT	LATTITUDINAL	SHR	SHOWER
C	CHANNEL	LAV	LAVATORY	SH	SHOWER
CLRM	CLASSROOM	LAV	LAVATORY	SH	SHOWER
CO	CLEANOUT	LAV	LAVATORY	SH	SHOWER
CLR	CLEARANCE, CLEAR	LH	LEFT HAND	SH	SHOWER
CLOS	CLOSET	LG	LONG	SH	SHOWER
CR	COLD ROLLED CHANNEL	LG	LONG	SH	SHOWER
COL	COLUMN	LG	LONG	SH	SHOWER
COMB	COMBINATION	LG	LONG	SH	SHOWER
CONC	CONCRETE	LG	LONG	SH	SHOWER
CCB	CONCRETE BLOCK	LG	LONG	SH	SHOWER
CMU	CONCRETE MASONRY UNIT	LG	LONG	SH	SHOWER
CONF	CONFERENCE	LG	LONG	SH	SHOWER
CONN	CONNECTION	LG	LONG	SH	SHOWER
CONST	CONSTRUCTION	LG	LONG	SH	SHOWER
CJ	CONSTRUCTION, CONTROL JOINT	LG	LONG	SH	SHOWER
CONT	CONTINUOUS	LG	LONG	SH	SHOWER
CONTR	CONTRACTOR	LG	LONG	SH	SHOWER
CFE	CONTRACTOR FURNISHED EQUIP	LG	LONG	SH	SHOWER
COORD	COORDINATE	LG	LONG	SH	SHOWER
CPG	CORING	LG	LONG	SH	SHOWER
CS	CORNER GUARD	LG	LONG	SH	SHOWER
CORR	CORRIDOR	LG	LONG	SH	SHOWER
CTSK	COUNTER SINK	LG	LONG	SH	SHOWER
CRS	COURSE	LG	LONG	SH	SHOWER
DP	DAMP-PROOFING	LG	LONG	SH	SHOWER
DB	DECIBEL	LG	LONG	SH	SHOWER
DEPT	DEPARTMENT	LG	LONG	SH	SHOWER
DET	DETAIL	LG	LONG	SH	SHOWER
DIAG	DIAGONAL	LG	LONG	SH	SHOWER
DIA.	DIAMETER	LG	LONG	SH	SHOWER
DIM	DIMENSION	LG	LONG	SH	SHOWER
DW	DISHWASHER	LG	LONG	SH	SHOWER
DISP	DISPENSER	LG	LONG	SH	SHOWER
DBL	DOUBLE	LG	LONG	SH	SHOWER
DR	DOOR	LG	LONG	SH	SHOWER
DG	DOOR GRILLE	LG	LONG	SH	SHOWER
DO	DOOR OPENING	LG	LONG	SH	SHOWER
DN	DOWN	LG	LONG	SH	SHOWER
DS	DOWNSPOUT	LG	LONG	SH	SHOWER
DWG	DRAWING	LG	LONG	SH	SHOWER
DF	DRINKING FOUNTAIN	LG	LONG	SH	SHOWER
DYR	DRYER	LG	LONG	SH	SHOWER
EA	EACH	LG	LONG	SH	SHOWER
EAF	EACH FACE	LG	LONG	SH	SHOWER
E	EAST	LG	LONG	SH	SHOWER
ELEC	ELECTRIC (AL)	LG	LONG	SH	SHOWER
EWC	ELECTRIC WATER COOLER	LG	LONG	SH	SHOWER
EW	ELECTRIC WATER HEATER	LG	LONG	SH	SHOWER
EL	ELEVATION	LG	LONG	SH	SHOWER
ELEV	ELEVATOR	LG	LONG	SH	SHOWER
ENCL	ENCLOSURE	LG	LONG	SH	SHOWER
ENGR	ENGINEER	LG	LONG	SH	SHOWER
ENT	ENTRANCE	LG	LONG	SH	SHOWER
EQ	EQUAL	LG	LONG	SH	SHOWER
EQU	EQUIPMENT	LG	LONG	SH	SHOWER
EQU, EQMT	EQUIPMENT	LG	LONG	SH	SHOWER
EXH	EXHAUST	LG	LONG	SH	SHOWER
EF	EXHAUST FAN	LG	LONG	SH	SHOWER
EXIST	EXISTING	LG	LONG	SH	SHOWER
EG	EXISTING GRADE	LG	LONG	SH	SHOWER
EXP	EXPANSION	LG	LONG	SH	SHOWER
EJ, EXP JT	EXPANSION JOINT	LG	LONG	SH	SHOWER
EXT	EXTERIOR	LG	LONG	SH	SHOWER
ECB	EXTERIOR CEMENT BOARD	LG	LONG	SH	SHOWER
EXTD	EXTRUDED	LG	LONG	SH	SHOWER
FAB	FABRIC	LG	LONG	SH	SHOWER
FBR	FACE BRICK	LG	LONG	SH	SHOWER
FOS	FACE OF STUDS	LG	LONG	SH	SHOWER
FW	FACE OF WALL	LG	LONG	SH	SHOWER
FM	FACTORY MUTUAL	LG	LONG	SH	SHOWER
FED SPEC	FEDERAL SPECIFICATIONS	LG	LONG	SH	SHOWER
FT	FEET	LG	LONG	SH	SHOWER
FIN	FINISH	LG	LONG	SH	SHOWER
FE	FIRE EXTINGUISHER	LG	LONG	SH	SHOWER
FEC	FIRE EXTINGUISHER CABINET	LG	LONG	SH	SHOWER
FHC	FIRE HOSE CABINET	LG	LONG	SH	SHOWER
FHR	FIRE HOSE RACK	LG	LONG	SH	SHOWER
FR	FIRE RESISTANT (RATED)	LG	LONG	SH	SHOWER
FRF	FIREPROOF	LG	LONG	SH	SHOWER
FTX	FIXTURE	LG	LONG	SH	SHOWER
FLASHG	FLASHING	LG	LONG	SH	SHOWER
FLEX	FLEXIBLE	LG	LONG	SH	SHOWER
FL	FLOOR	LG	LONG	SH	SHOWER
F.LD, FD	FLOOR DRAIN	LG	LONG	SH	SHOWER
FLUOR	FLUORESCENT	LG	LONG	SH	SHOWER
FSE	FOOD SERVICE EQUIPMENT	LG	LONG	SH	SHOWER
FTG	FOOTING	LG	LONG	SH	SHOWER
FN	FOUNDATION	LG	LONG	SH	SHOWER
FS	FULL SIZE	LG	LONG	SH	SHOWER
FURN	FURNISH	LG	LONG	SH	SHOWER
FBO	FURNISHED BY OWNER	LG	LONG	SH	SHOWER
FURG	FURRING	LG	LONG	SH	SHOWER

**SYMBOLS LEGEND**

DRAWING TITLE	FLOOR PLAN
DRAWING NUMBER	-1
DRAWING SCALE	1/8" = 1'-0"
SECTION MARKER	1 SIM
SHEET NUMBER ON WHICH SECTION IS DRAWN	A101
EXTERIOR ELEVATION MARKER	1 REF
SHEET NUMBER ON WHICH SECTION IS DRAWN	A101
INTERIOR ELEVATION MARKER	1 REF
SHEET NUMBER ON WHICH SECTION IS DRAWN	A101
DETAIL CALLOUT MARKER	1 SIM
SHEET NUMBER ON WHICH DETAIL IS DRAWN	A101
FLOOR ELEVATION SYMBOL	
SPOT ELEVATION SYMBOL	
STRUCTURAL GRID MARKER	1 NEW CONSTRUCTION, 1 EXISTING
PARTITION TAG	101A
ROOM TAG	ROOM NAME 101A, ROOM NAME 101A, 150 SF
DOOR NUMBER TAG	101, 101
GLASS TYPE TAG	62

**GENERAL NOTES**

- CONTRACTOR IS RESPONSIBLE FOR VERIFYING SITE, FIELD AND BUILDING CONDITIONS ASSOCIATED WITH THIS WORK PRIOR TO SUBMITTING BIDS AND COMMENCING WORK. IF THERE ARE ANY DISCREPANCIES BETWEEN DRAWINGS AND FIELD CONDITIONS, CONFERENCE WITH CONSTRUCTION MANAGER AND ARCHITECT/ENGINEER FOR RESOLUTION.
- ADDITIONAL ALTERATIONS PROJECTS: THE DESIGN DEPICTED HEREIN IS BASED ON INFORMATION (AS-BUILTS, RECORD DRAWINGS, SURVEY, GEOTECHNICAL SERVICES, ETC.) PROVIDED BY THE OWNER OR OTHERS. UNLESS OTHERWISE DIRECTED BY THE CONTRACT, ANY VERIFICATION OF THIS INFORMATION IS LIMITED TO FIELD OBSERVATION. UNKNOWN CONDITIONS MAY EXIST THAT WILL ONLY BE REVEALED AS THE CONTRACTOR'S WORK PROGRESSES. GIVEN THE NATURE OF THESE PROJECTS, THE CONTRACTOR SHOULD ANTICIPATE THE NEED FOR ADJUSTMENTS TO THE DESIGN AS UNKNOWN CONDITIONS ARE DISCOVERED DURING CONSTRUCTION.
- CONTRACTOR SHALL FURNISH ALL ADDITIONAL DATA AND DOCUMENTATION TO SECURE ALL REQUIRED PERMITS AND SHALL COORDINATE THIS DATA WITH THE CONSTRUCTION DOCUMENTS WHEN REQUIRED.
- ALL DETAILS AND SECTIONS SHOWN IN THE DRAWINGS ARE INTENDED TO BE TYPICAL AND SHALL BE CONSTRUED TO APPLY TO SIMILAR CONDITIONS ELSEWHERE ON THE PROJECT, EXCEPT WHERE INDICATED BY A DIFFERENT DETAIL.
- CONTRACTOR TO PROVIDE COMPLETE AND WORKING MEPPFIT SYSTEMS IF INDICATED IN ANY PORTION OF THE DRAWINGS.
- PLANS WHICH APPEAR AS BACKGROUNDS ON ENGINEERING DRAWINGS ARE FOR THE PURPOSE OF ILLUSTRATING GENERAL SPACE CONFIGURATION ONLY AND SHALL NOT BE USED FOR PORTIONS OF THE WORK OTHER THAN THAT PERTAINING TO THE TITLE OF EACH SHEET.
- AROUND ALL EXPOSED PIPES, CONDUIT OR DUCTS, INSTALL ENCLOSURES OF THE SAME MATERIAL AND FINISH AS ADJACENT WORK, UNLESS NOTED OTHERWISE.
- PROVIDE AND INSTALL ALL NECESSARY SUPPORT, BLOCKING, ANCHORING AND BRACING FOR ELECTRIC LIGHT FIXTURES, CHANDELIERS, OPERABLE PARTITIONS, TOILET PARTITIONS, MECHANICAL EQUIPMENT, PIPES, DUCTWORK, CABLE TRAYS, OTHER UTILITY APPLIANCES, AND SIMILAR MISCELLANEOUS METALS NOTED OR IMPLIED IN THE CONTRACT DOCUMENTS.
- ANY SURFACES OR AREAS NOT CLEARLY DEFINED OR INDICATED BY FINISH SCHEDULE SHALL BE OF SAME MATERIAL AND FINISH AS SURFACES OR AREAS OF SIMILAR USE ELSEWHERE.
- FINISHES SHOWN IN SCHEDULE TO EXTEND OVER, UNDER AND BEHIND CABINETS, COUNTERS, EQUIPMENT, FURNISHINGS, CHALK AND TACK BOARDS, RACKS, AND FIXTURES APPROXIMATELY 1/2" WITH BEHIND SAME TO BE FILED AND PRIMED.
- WALL FINISHES SHALL INCLUDE ALL PROJECTIONS, RECESSES, COLUMNS, ENCLOSURES AND BULKHEADS.
- EXTERIOR PERIMETER OF ALL WINDOWS, DOOR FRAMES, LOUVERS OR OTHER ITEMS INSERTED IN AN EXTERIOR WALL SHALL BE SEALED WEATHER TIGHT WHETHER INDICATED ON DRAWINGS OR NOT.
- SEE STRUCTURAL DRAWINGS FOR LOCATIONS OF ALL VERTICAL AND HORIZONTAL MASONRY WALL REINFORCEMENT.
- FIELD CHECK ALL ROUGH AND/OR FINISH DIMENSIONS FOR ACCURATE FITTING OF EQUIPMENT, CABINETS, COUNTERS, FIXTURES AND ACCESSORIES BEFORE FABRICATION. PROVIDE AND INSTALL ALL NECESSARY FILLERS, SCRIBE STRIPS, PANELS, BASES OR TRIM TO COMPLETE AND FINISH INSTALLATIONS.
- CONSULT PLUMBING, ELECTRICAL AND MECHANICAL DRAWINGS FOR LOCATIONS AND DESCRIPTION OF ACCESS PANELS, LOUVER OPENINGS, VENTILATORS, GRILLES, REGISTERS, PANELS, VALVE CABINETS, DRINKING FOUNTAINS, ETC.
- ALL SWITCHES, OUTLETS, THERMOSTATS, CLOCKS, SPEAKERS, FLAG POLE HOLDERS OR OTHER WALL MOUNTED DEVICES OR CONTROLS SHALL BE INSTALLED IN LOCATIONS WHICH ARE UNOBSTRUCTED BY CABINETS, COUNTERS, RACKS, FIXTURES, CHALK AND TACK BOARDS, FURNISHINGS OR EQUIPMENT. ITEMS INTENDED FOR WALL MOUNTING SHALL NOT BE INSTALLED ON, THROUGH OR INTO ANY OTHER EQUIPMENT UNLESS SPECIFICALLY CALLED FOR. VERIFY MOUNTING HEIGHTS WITH ADA REQUIREMENTS.
- PROVIDE AND INSTALL ALL NECESSARY HARDWARE, BRACKETS, BRACING, ANCHORING, INSERTS, BLOCKING, FURRING OR OTHER SUPPLEMENTARY ITEMS NEEDED FOR COMPLETE INSTALLATION OF EQUIPMENT, CABINETS, FIXTURES, ACCESSORIES, CCTV, INTERCOM, PROJECTORS, ETC.



www.brph.com Copyright © 2026  
**Architects Engineers, Inc.**  
 19020 33rd Ave W | Suite 500  
 Lynnwood | Washington | 98036  
 425-921-3500  
 Offices in Melbourne, Orlando, Atlanta, Lynnwood, Charleston and Huntsville  
 Alaska Business Entity Number: 56725F

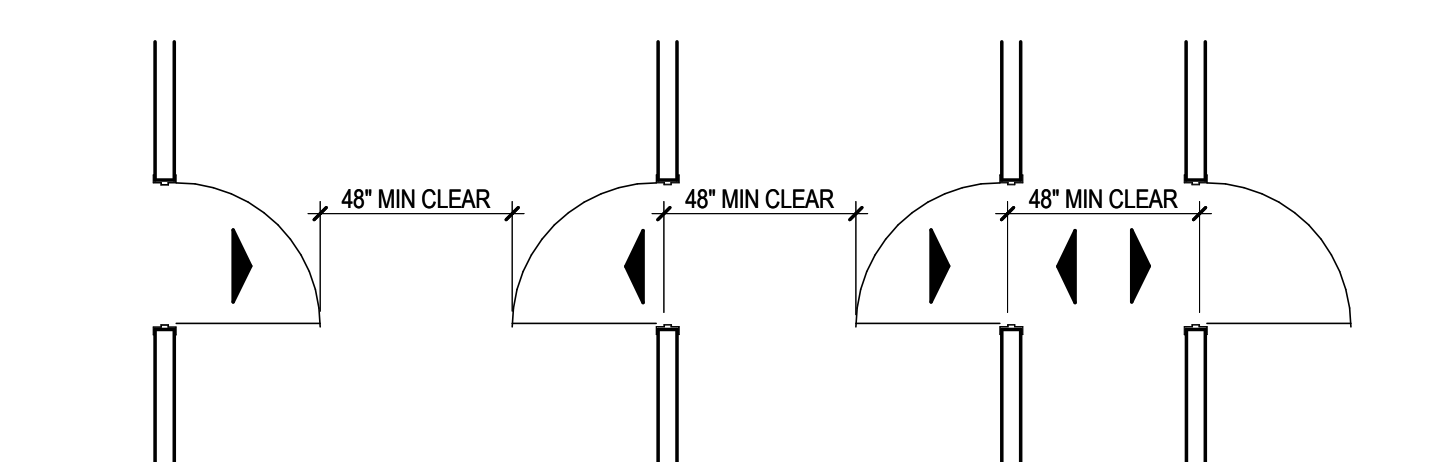
**ISSUE FOR CONSTRUCTION**

NO.	DESCRIPTION	DATE

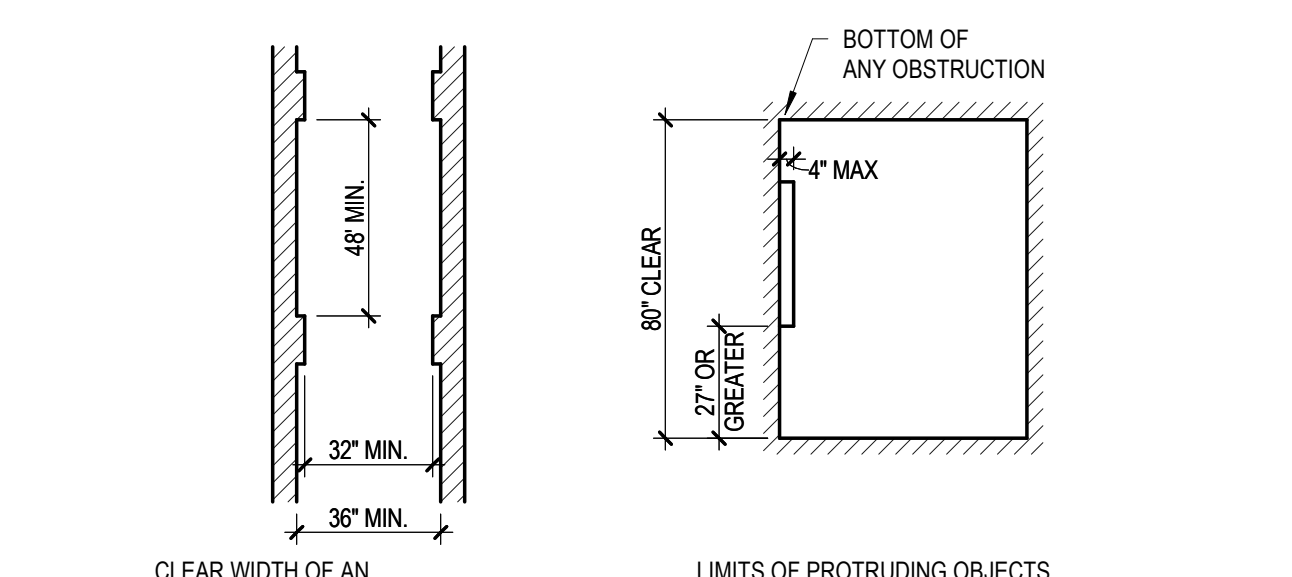
DOCUMENT HISTORY

NO.	DESCRIPTION	DATE

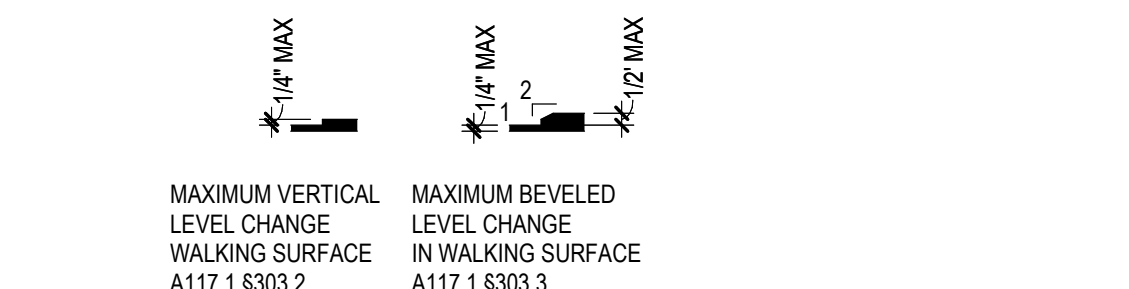
**AREA 3 PAD D**  
**PACIFIC SPACEPORT COMPLEX, KODIAK ISLAND, ALASKA**  
**ALASKA AEROSPACE CORPORATION**



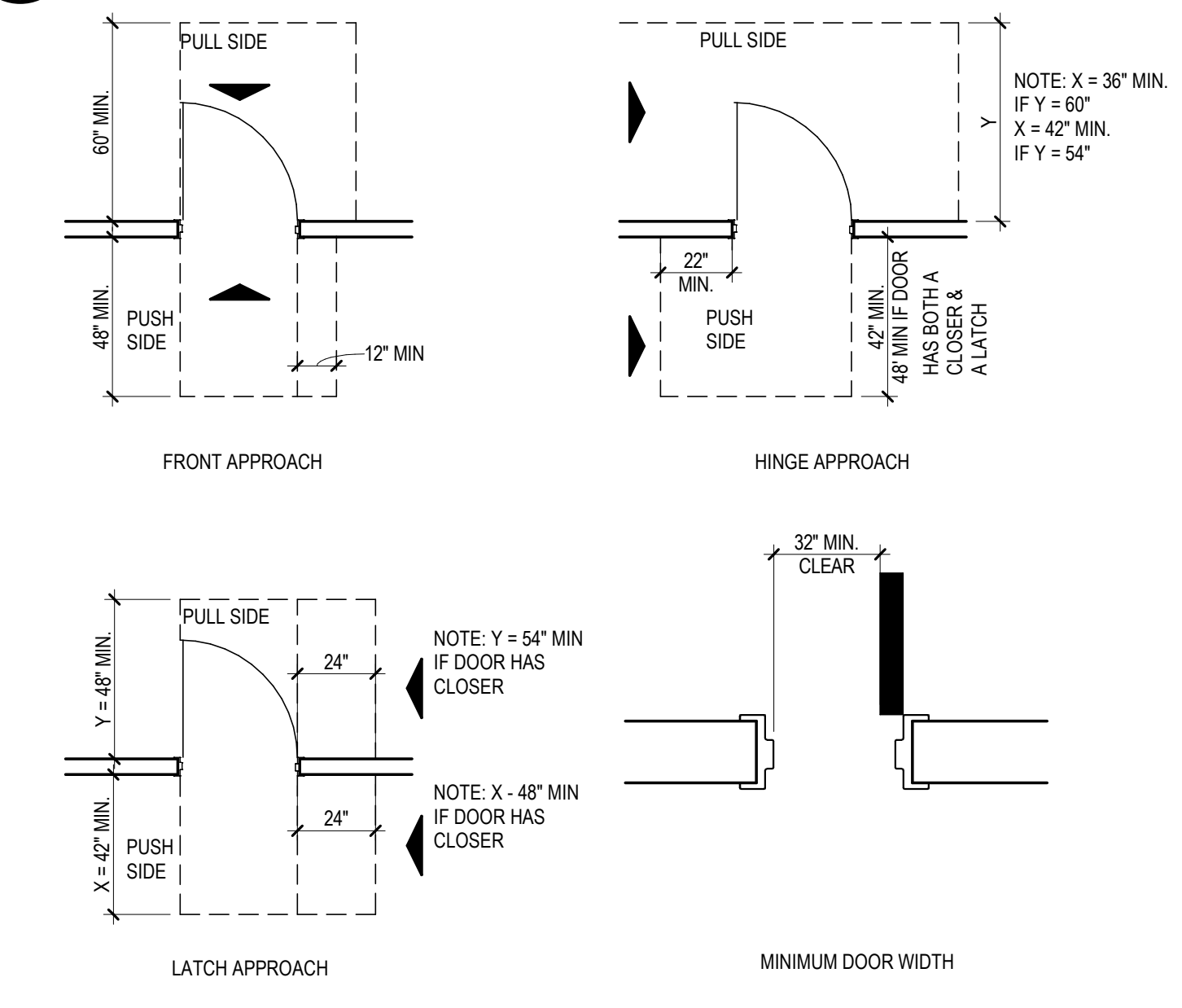
**B3 DOOR IN SERIES AND GATES IN SERIES**  
 1/4" = 1'-0"



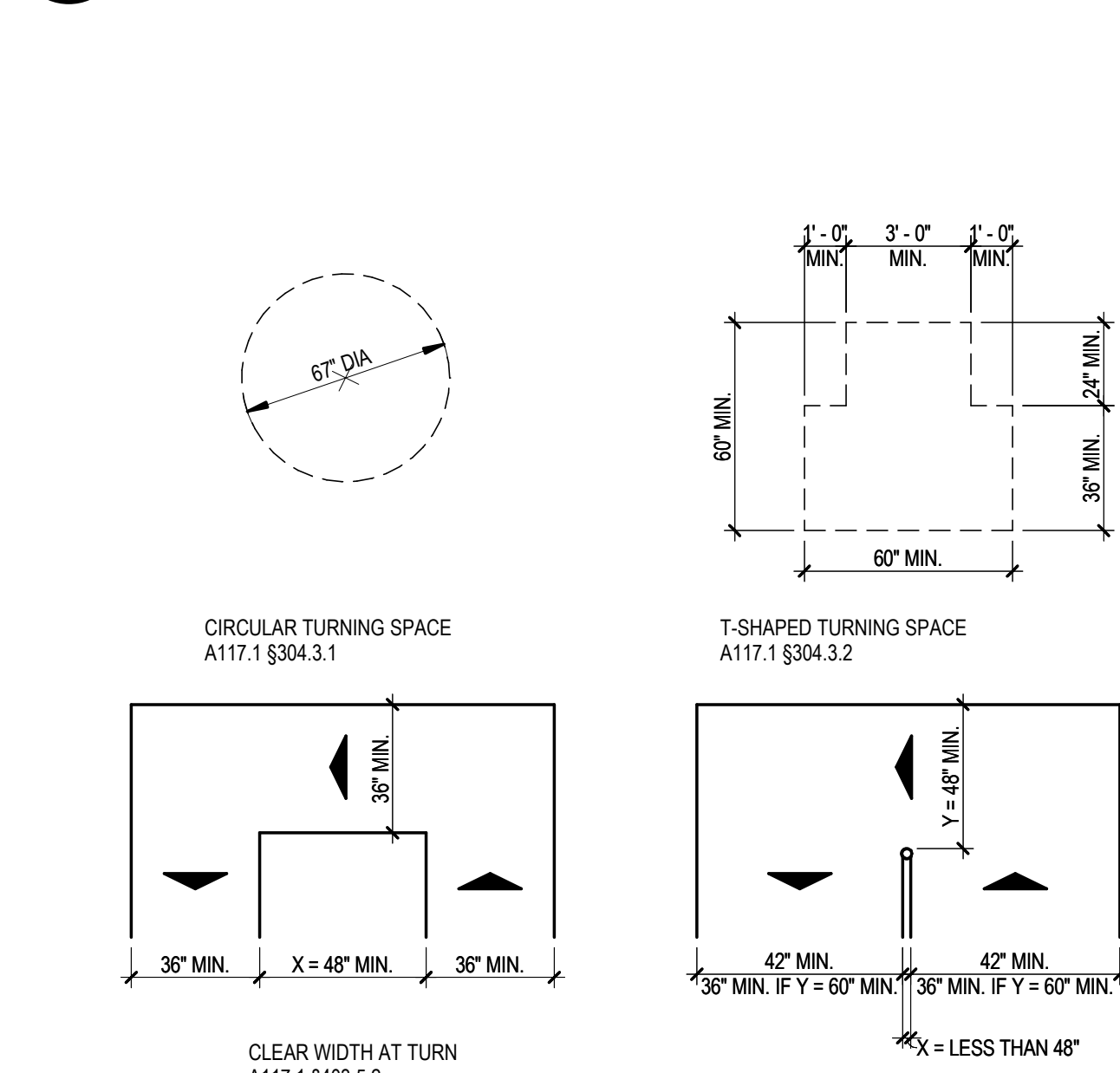
**B4 MINIMUM CLEAR PASSAGE AND PROTRUDING OBJECTS**  
 1/4" = 1'-0"



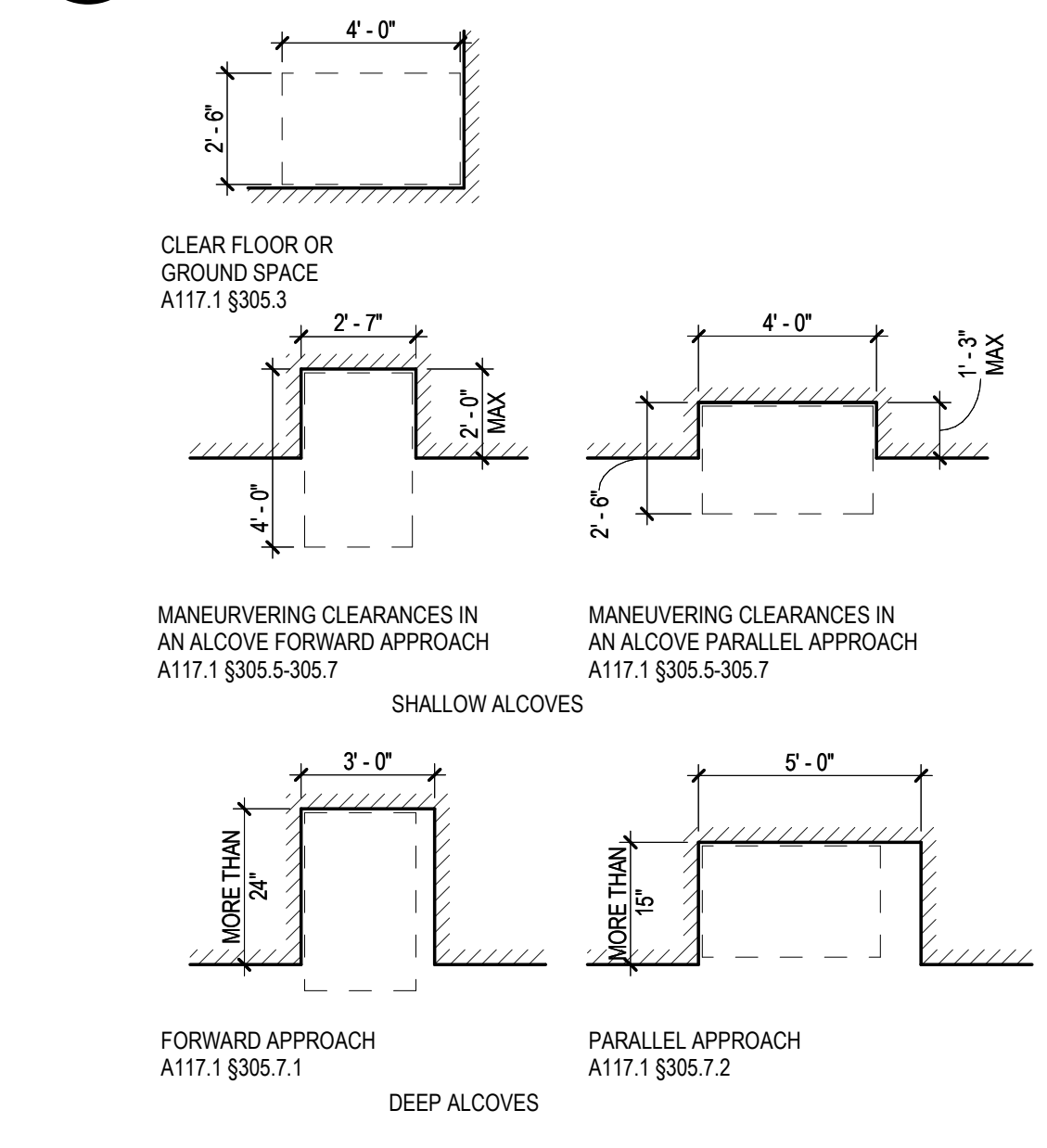
**B5 CHANGED IN LEVELS**  
 1 1/2" = 1'-0"



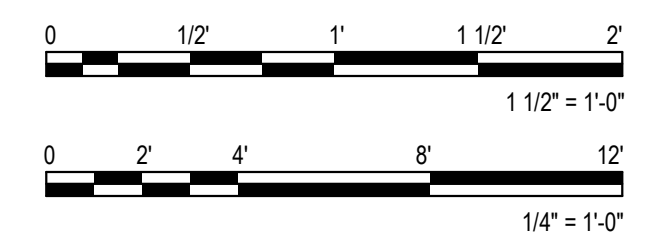
**A3 MANEUVERING CLEARANCES AT MANUAL SWINGING DOORS AND GATES**  
 1/4" = 1'-0"



**A4 TURNING SPACE**  
 1/4" = 1'-0"



**A5 CLEAR FLOOR OR GROUND SPACE**  
 1/4" = 1'-0"



ARCHITECT OF RECORD  
**KEN LOWERY**  
 AK NO. 14640  
 DESIGNED BY  
**BRPH**  
 DRAWN BY  
**C. KOTRLIK**  
 PROJECT NUMBER  
**C09729.001**  
 DATE  
**05/08/2026**

TITLE  
**ABBREVIATIONS, SYMBOLS, GENERAL NOTES**  
 DRAWING NO.  
**G-002**









**ISSUE FOR CONSTRUCTION**

DOCUMENT HISTORY

NO.	DATE	DESCRIPTION

**LEGEND**

**IRP-1 INSULATED MTL ROOF PANEL:**

- MATERIAL: STEEL
- INSTALL 3/8" INSULATED MTL PANEL OVER PEMB GIRTS BY PEMB MANUFACTURER.
- MANUF. BOO: METL SPAN8, LS-36 INSULATED METAL ROOF PANEL & INSULATION LINER SYSTEM
- METAL PANELS, 4" THICK R-35.9, Z2 GA, G-90 STEEL
- FINISH: FLUOROPOLYMER, COLOR: HARVEST BEIGE

**URP-1 UNINSULATED MTL PANEL:**

- MATERIAL: STEEL
- INSTALL 24" STANDING SEAM MTL PANEL OVER PEMB GIRTS BY PEMB MANUFACTURER
- MANUF. BOO: NUCOR, CFR STANDING SEAM ROOF PANEL, UN-INSULATED
- METAL PANELS, 3" THICK 24 GA, G-90 STEEL
- FINISH: MATCH IRP-1

**ROOF NOTES**

- ALL ROOFING MATERIALS SHALL BE INSTALLED IN ACCORDANCE WITH IBC 2021.
- SLOPE ALL GUTTERS MIN 1/8" PER FOOT TO NEAREST DOWNSPOUT (SEE CALCS).
- IT SHALL BE THE CONTRACTOR'S RESPONSIBILITY TO OBTAIN AND VERIFY THEIR OWN FIELD MEASUREMENTS FOR THE EXECUTION OF HIS WORK AND PRIOR TO FABRICATION OF THE VARIOUS COMPONENTS OF THE WORK.
- ALL ROOF PENETRATIONS REQUIRED FOR INSTALLATION OF MECHANICAL UNITS, EQUIPMENT CURBS, VENTS, ETC. MUST BE DONE PER PEMB MANUFACTURER'S RECOMMENDATIONS TO ENSURE ALL WARRANTIES ARE MAINTAINED. PROVIDE FLASHING, COUNTERFLASHING, SEALANT, ETC. AS REQUIRED TO PROVIDE WATERPROOF CONDITIONS, TYPICAL AT ALL ROOF PENETRATIONS.
- LOCATIONS AND QUANTITIES OF ALL VENTS, FLASHINGS, ETC. SHALL BE VERIFIED BY THE CONTRACTOR IN THE FIELD. DISCREPANCIES IN THE DRAWINGS SHALL BE BROUGHT TO THE ATTENTION OF THE CONT. PROJECT MGR. PRIOR TO PROCEEDING WITH WORK. PROCEDURE WITHOUT NOTIFICATION WILL BE CONSIDERED ACCEPTANCE OF FIELD CONDITIONS AND PART OF THE CONTRACTOR'S SCOPE OF WORK.
- ALL ROOFING SYSTEMS AND COMPONENTS SHALL BE INSTALLED IN CONFORMANCE WITH THE GUIDELINES OF THE NATIONAL ROOFING CONTRACTORS ASSOCIATION (NRCA).
- ALL SHEET METAL WORK SHALL BE REQUIRED TO CONFORM TO THE GUIDELINES OF THE SHEET METAL AND AIR CONDITIONING NATIONAL ASSOCIATION (SMACNA).
- ALL VERTICAL CONDUCTORS AND DOWN SPOUTS SHALL BE REQUIRED TO CONFORM TO THE GUIDELINES OF THE INTERNATIONAL PLUMBING CODE PER THE CALCULATIONS TABLE BELOW.
- ALL WOOD BLOCKING TO BE PRESSURE TREATED BLOCKING; ALL FASTENERS TO BE STAINLESS STEEL.
- DAYLIGHT DISCHARGE DOWNSPOUTS TO SURFACE, SYSTEM SEE CIVIL.

**KEYED NOTES**

- PEMB PRE-FINISHED MTL GUTTER W/ SNOW CLIPS. SEE CALCULATIONS FOR SIZING. SEE DETAILS FOR SNOW CLIPS.
- ROOF SNOW GUARDS SECURED TO STANDING SEAM ROOF CLIPS; BOO ALPINE SNOWGUARDS/SS STANDING SEAM TWO-PIPE SNOW GUARD, MODEL NO. ASG4000G, SPACED AT EACH PANEL SEAM PER MANUF. INSTRUCTIONS.
- PEMB PRE-FINISHED MTL DOWNSPOUTS TERMINATING AT SPLASH BLOCKS AT GRADE. SEE CALCULATIONS FOR SIZING.

**ROOF DRAINAGE CALCULATIONS**

IPC 2021 (INTERNATIONAL PLUMBING CODE)

FIGURE 1106.1  
 100-YEAR, 1-HOUR RAINFALL (INCHES) FOR KODIAK, AK = APPROX. 1.28"

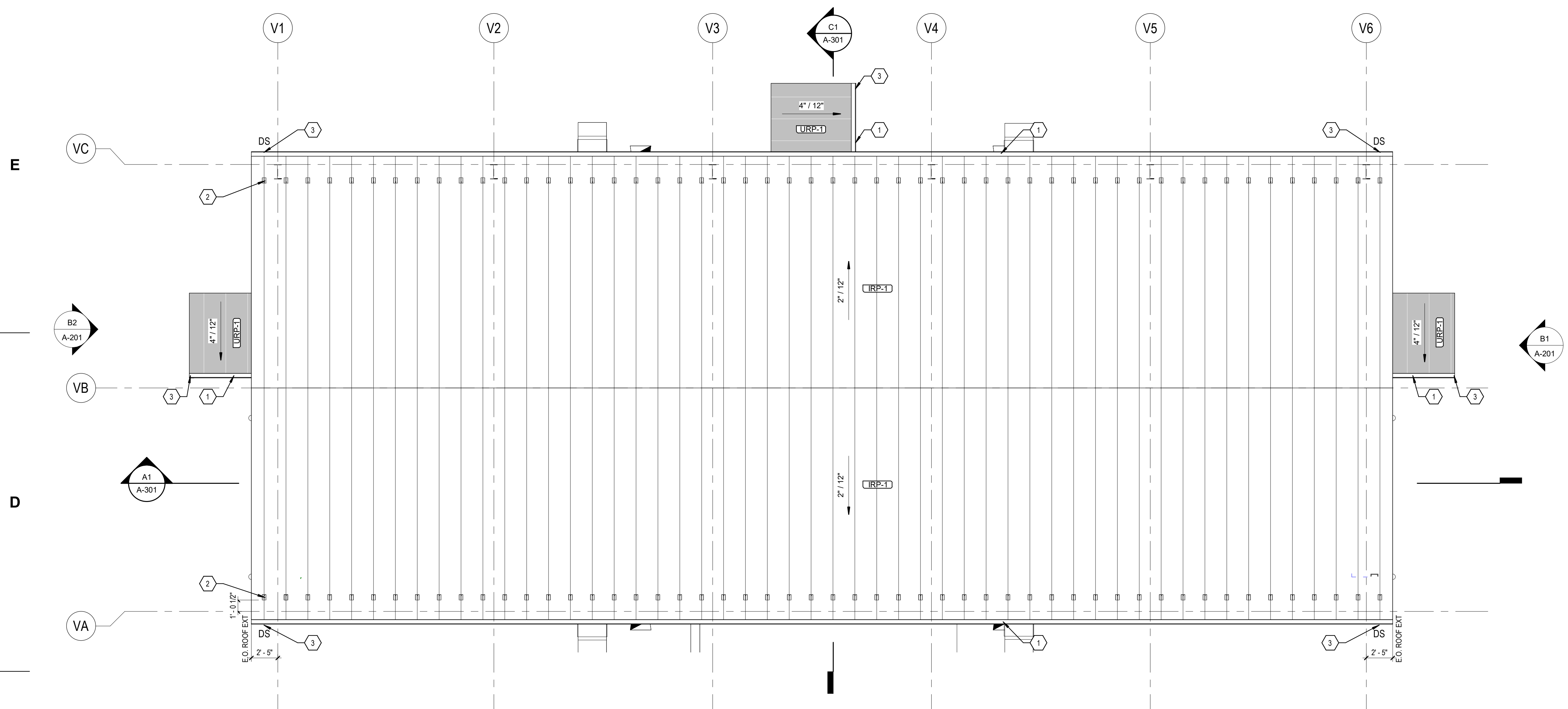
TABLE 1106.4  
 Size of vertical conductors and leaders shall be sized based on the flow rate from horizontal gutters or the maximum flow rate through roof drains.

LEGEND:  
 R<sub>2</sub> : SQFT OF PROJECTED ROOF AREA PER QUADRANT  
 TOTAL GARAGE ROOF AREA = 4,480 SF (R<sub>2</sub>)  
 R<sub>2</sub> = ROOF AREA PER QUADRANT = R<sub>1</sub> / 4 = 4,480 / 4 = 1,120 SF  
 GALLONS PER MINUTE (GPM) = (1/2" X 12" X 1.28") / 231 = 0.89 GAL/HR / 60 MIN = 0.0153 GPM  
**Total GPM = (R<sub>2</sub> x 0.0156) / 4 = (4,480 \* 0.0133) / 4 = 14.89 gpm per DS**

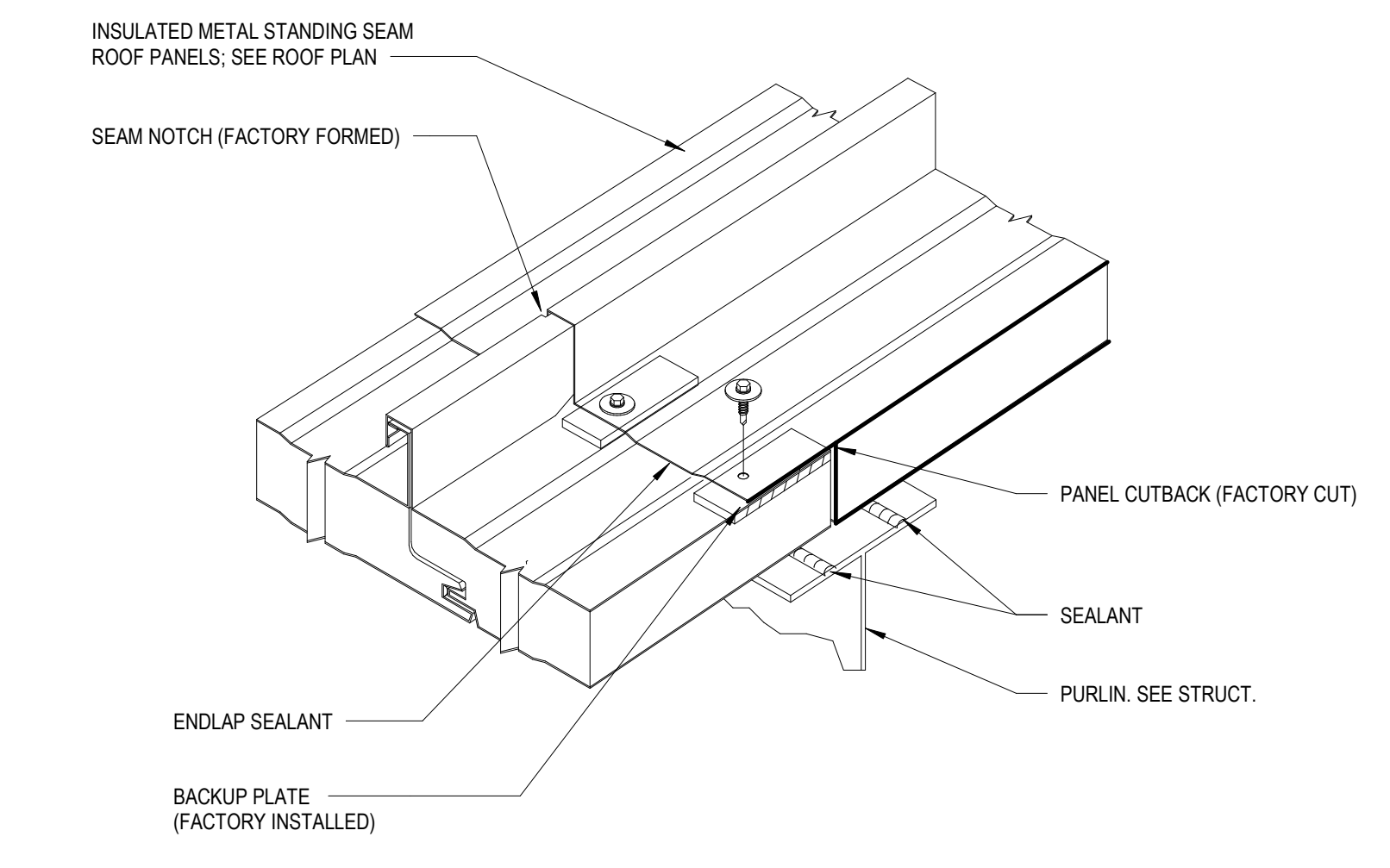
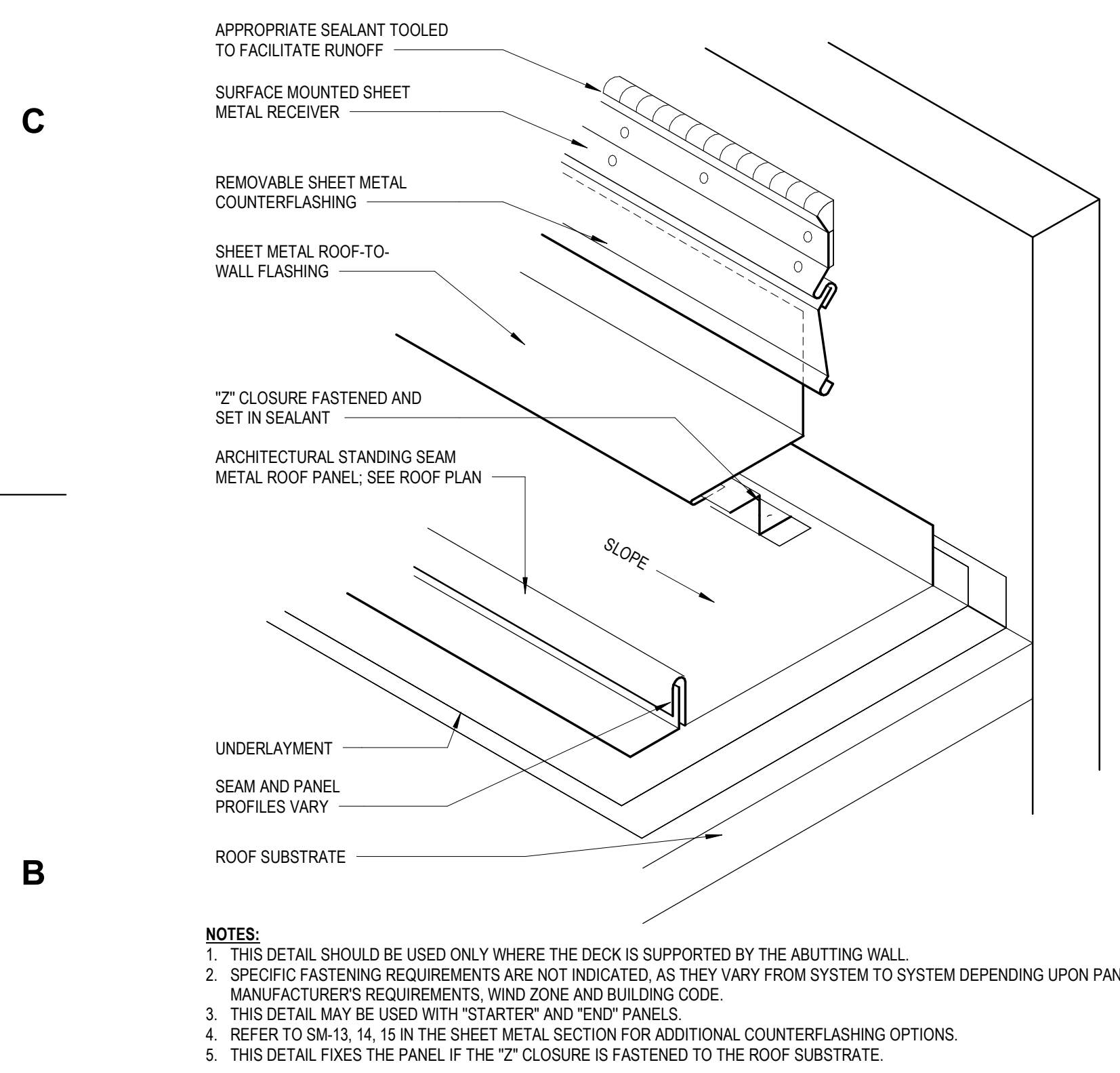
**MIN. REQUIRED:**  
 4" Ø GUTTER, SLOPE @ 1/8" / 12", W/ (2) 2" X 2" DS, EACH SIDE

**MIN. PROVIDED:**  
 5"x5" GUTTER, SLOPE @ 1/8" / 12", W/ (2) 5" X 5" DS, EACH SIDE

NOTE:  
 1. RAINFALL DATA GATHERED FROM NOAA ATLAS 14 POINT PRECIPITATION FREQUENCY ESTIMATES, PRECIPITATION FREQUENCY ESTIMATED WITH 5% EXCEEDANCE INTERVAL. SEE ADDITIONAL INFORMATION AT: [HSC.NWS.NOAA.GOV](http://HSC.NWS.NOAA.GOV)  
 2. DIMENSIONS ARE WITH BY DEPTH FOR RECTANGULAR SHAPES. SINGULAR DIMENSIONS ARE DIAMETER (Ø) OF A SEMI-CIRCLE GUTTER PROFILE.



**E1 ROOF PLAN**  
 3/16" = 1'-0"



**B2 ROOF ENDLAP ISOMETRIC**  
 NTS

**B1 ROOF-TO-WALL TRANSITION**  
 NTS

**NOTES:**

- THIS DETAIL SHOULD BE USED ONLY WHERE THE DECK IS SUPPORTED BY THE ABUTTING WALL.
- SPECIFIC FASTENING REQUIREMENTS ARE NOT INDICATED, AS THEY VARY FROM SYSTEM TO SYSTEM DEPENDING UPON PANEL MANUFACTURER'S REQUIREMENTS, WIND ZONE AND BUILDING CODE.
- THIS DETAIL MAY BE USED WITH "STARTER" AND "END" PANELS.
- REFER TO SIM-13, 14, 15 IN THE SHEET METAL SECTION FOR ADDITIONAL COUNTERFLASHING OPTIONS.
- THIS DETAIL FIXES THE PANEL IF THE 2" CLOSURE IS FASTENED TO THE ROOF SUBSTRATE.

**AREA 3 PAD D**  
**PACIFIC SPACEPORT COMPLEX, KODIAK ISLAND, ALASKA**  
**ALASKA AEROSPACE CORPORATION**



ARCHITECT OF RECORD:  
**KEN LOWERY**  
 AK NO. 14640  
 DESIGNED BY:  
**BRPH**  
 DRAWN BY:  
**C. KOTRLIK**  
 PROJECT NUMBER:  
**C09729.001**  
 DATE:  
**05/08/2026**  
 TITLE:  
**ROOF PLAN**

DRAWING NO.  
**A-191**







