

SADCS 7/10/13

1" = 60'

ATTACHMENT A

Land Estate
SEC 4
TOWNSHIP 9S RANGE 3W
OF THE
COPPER RIVER MERIDIAN,
ALASKA

Alaska State Plans, Zone 3
 North 30' from Datum 1983
 1 inch equals 400 feet
 45° 30' 00" N
 150° 00' 00" W

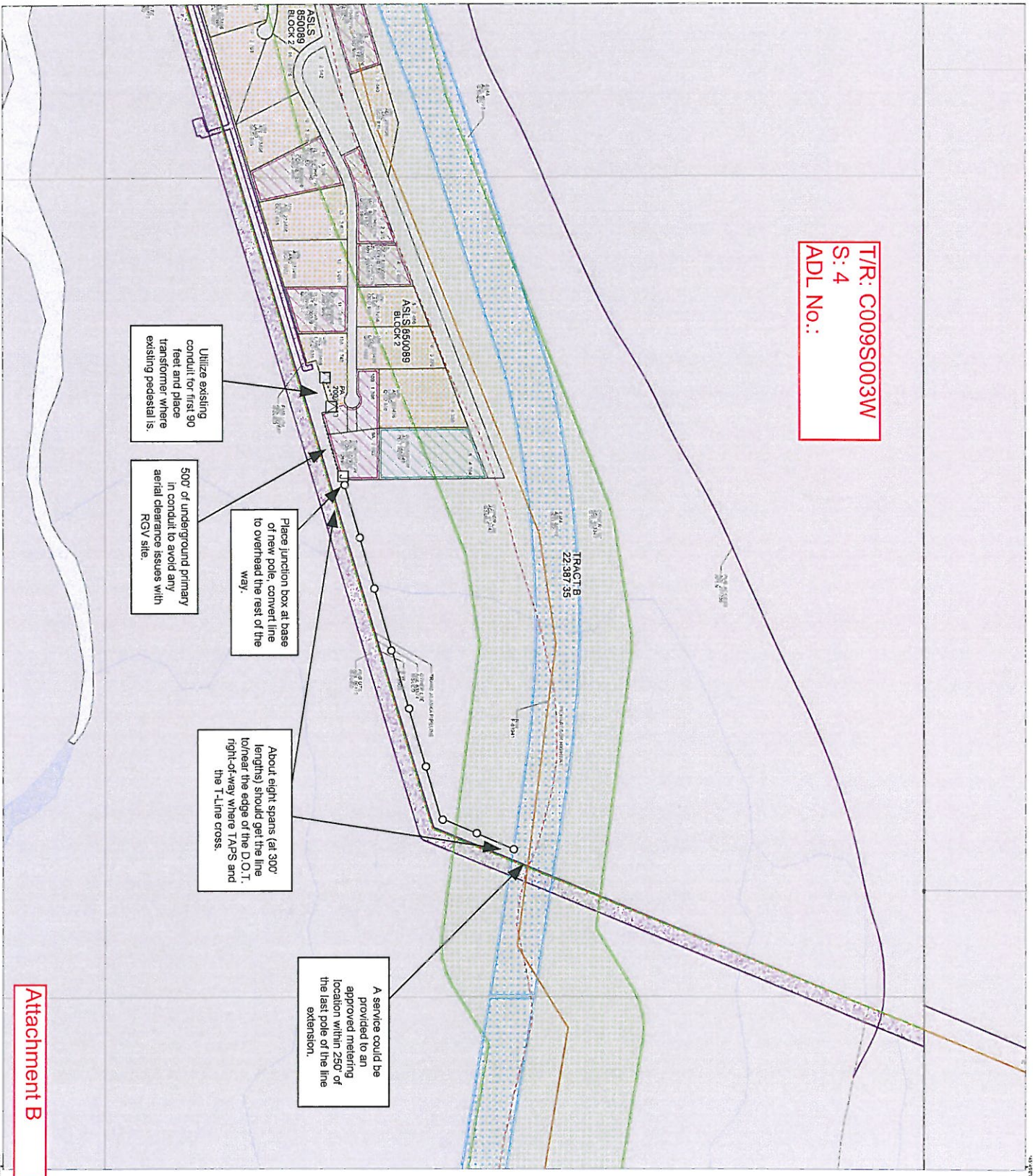
- Resource Site
- Permit or Lease
- Reservoir
- Other Activity
- Landmark
- Available and Potential Reoffer
- State Technically Approved or Potential Land
- Other State Acquired Land
- State Selected / Top Field Land
- Neural Health Trust Land
- Municipal Endowment and Municipal Trustland
- State Allotment
- Other Federal Action
- Agreement, Settlement, or Reconciliation
- Management Right
- Highway
- Secondary Road
- Trail
- Railroad
- Intersect
- Telephone
- Pipeline
- Boundary
- Recording District
- Conservation System Unit
- Incorporated City Boundary
- Potential Section Line
- National Geographic Survey Monument
- State Census Survey Monument
- State and Federal Survey Monument
- Strip
- Survey Boundary
- Hydrography
- Alaska Scenic Boundary

VIEW REMARKS COLUMN
VIEW AS I SAW FILE



A PRODUCT OF THE
 STATE OF ALASKA
 DEPARTMENT OF NATURAL RESOURCES
 LAND RECORDS INFORMATION SECTION
 GRAPHIC ILLUSTRATION ONLY.
 PUBLISHED DATE: 4/2/2009 RILER TO
 R:1/ATTN:PERMITS/ALASKA/INFORMATION SECTION
 FOR NEW PENDING ACTIONS APPLICATING THIS MAP
 CHECK/DRAWN: Per Odele Lanning

T/R: C009S003W
S: 4
ADL No.:



Utilize existing conduit for first 90 feet and place transformer where existing pedestals.

Place junction box at base to overhead the rest of the way.

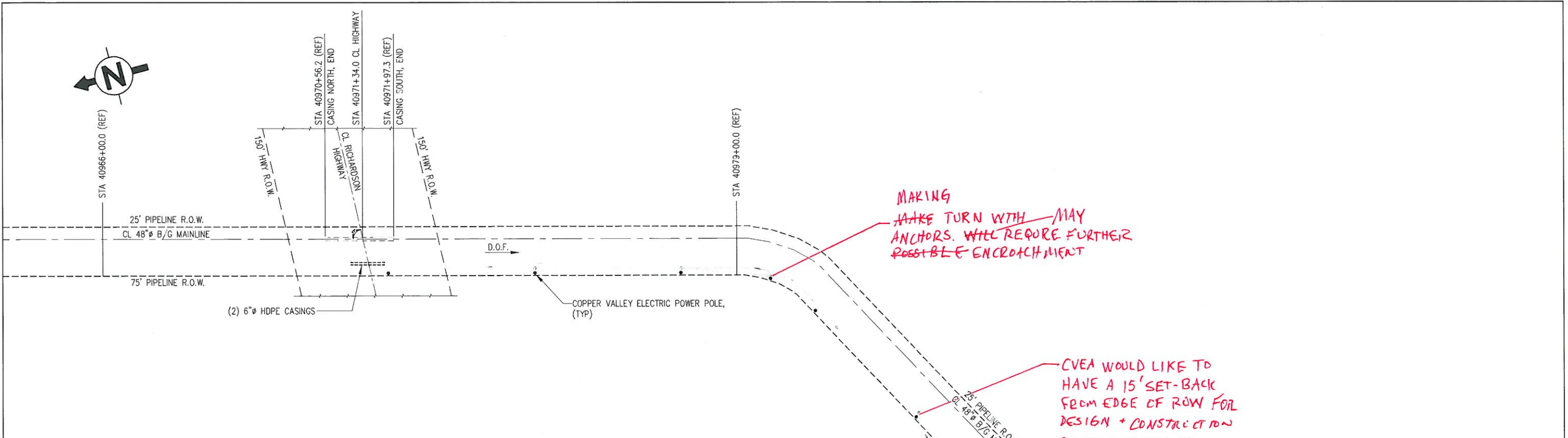
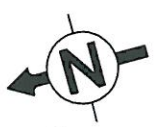
500' of underground primary in conduit to avoid any aerial clearance issues with RGV site.

About eight spans (at 300' lengths) should get the line to near the edge of the D.O.T. right-of-way where TAPS and the T-Line cross.

A service could be provided to an approved metering location within 250' of the last pole of the line extension.

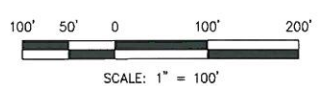
Attachment B

A B C D E F G H I J K

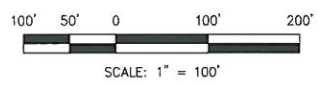
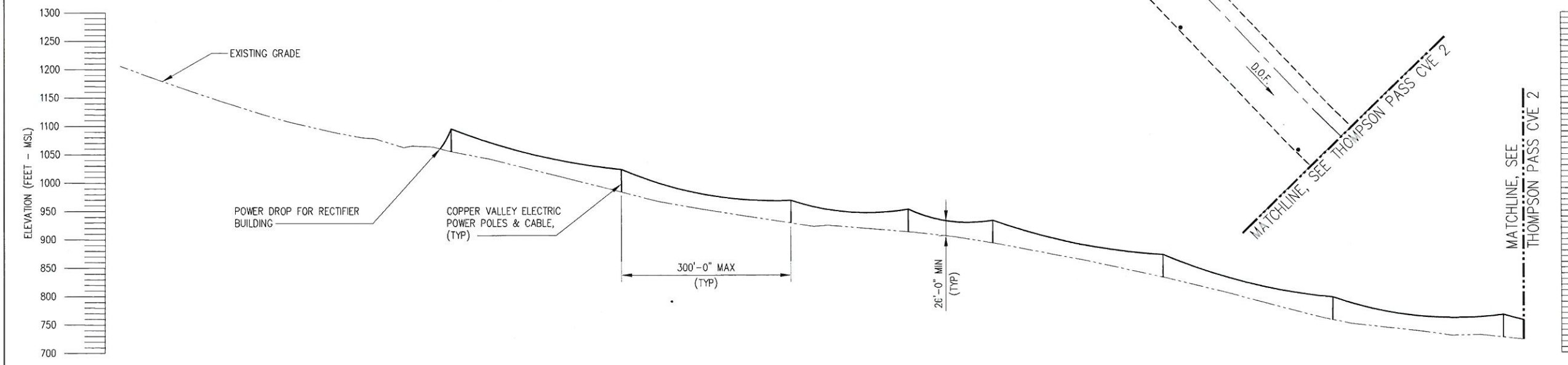


MAKING
~~MAKE~~ TURN WITH MAY
 ANCHORS. WILL REQUIRE FURTHER
 POSSIBLE ENCROACHMENT

CVEA WOULD LIKE TO
 HAVE A 15' SET-BACK
 FROM EDGE OF ROW FOR
 DESIGN + CONSTRUCTION
 CONSIDERATIONS.



PLAN
 SCALE: 1" = 100'



PROFILE
 SCALE: 1" = 100'

| | | | |
|--------------------|-----|---------------------|---|
| Project Dwg. No. | | THOMPSON PASS CVE 1 | |
| Sheet No. | 1 | Revision No. | 0 |
| For New Work See | N/A | | |
| For Demolition See | N/A | | |

AUTOCAD DWG. DO NOT REVISE MANUALLY.

| NUMBER | TITLE | REV. | DATE | DESCRIPTION | DWN. | CKD. | APP. | REV. | DATE | DESCRIPTION | XXX | XXX | XXX | DWN. | APP. | DWG. NO. | REV. |
|--------|-------|------|------|-------------|------|------|------|------|------|-------------|-----|-----|-----|------|------|----------|------|
| | | | | | | | | | | | | | | | | | |

GENERAL NOTES

REFERENCE DRAWINGS

REVISIONS

REVISIONS

DATE: 06-12-13 SCALE: 1" = 100' SHEET 1 OF 1

A B C D E F G H I J K

AFFECTED BY: FILE DATE: 06-14-13 PLOT SCALE: 1:1 FILENAME: FILENAME.DWG

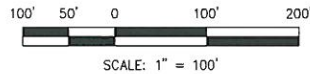
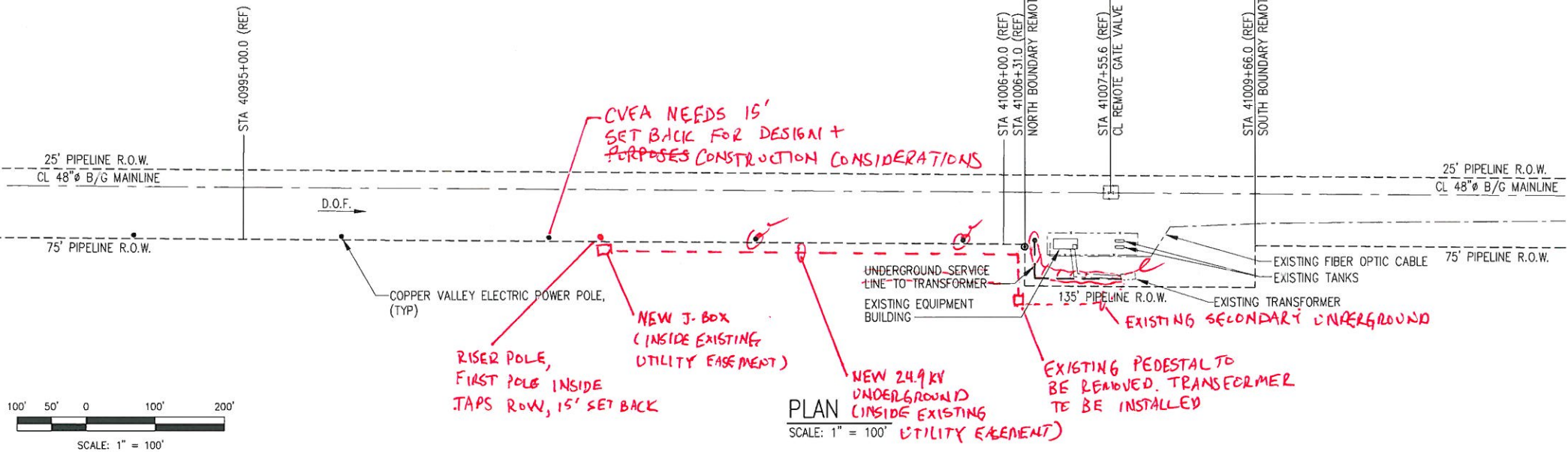
1
2
3
4
5
6
7

1
2
3
4
5
6
7

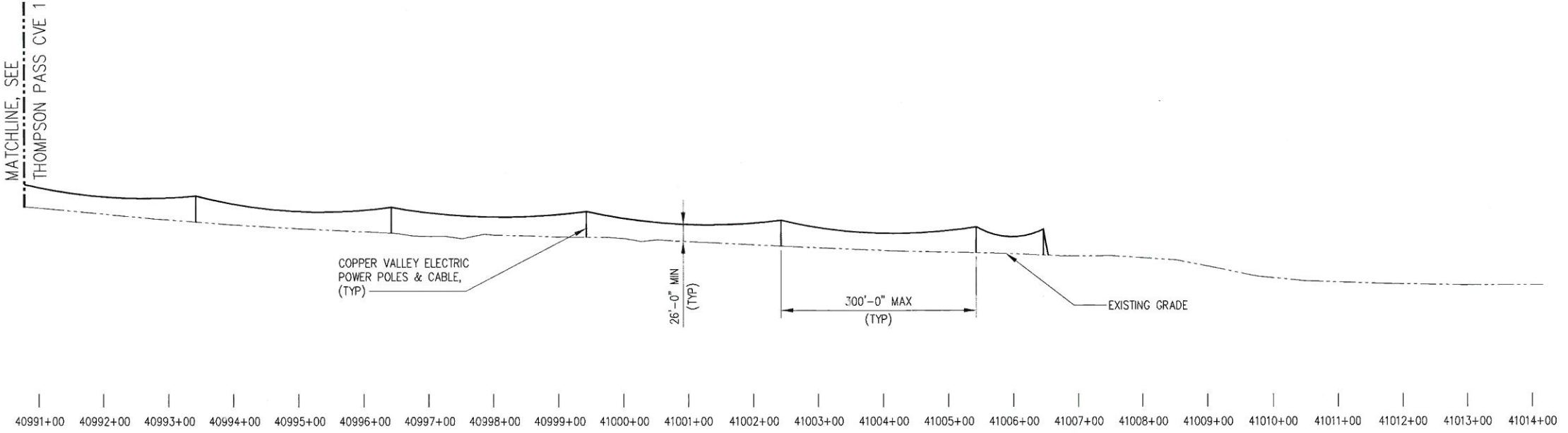
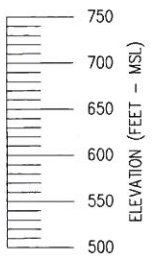
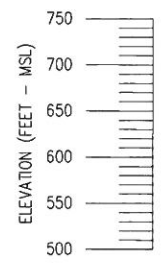


MATCHLINE, SEE THOMPSON PASS CVE 1

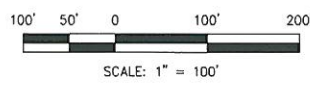
MATCHLINE, SEE THOMPSON PASS CVE 1



PLAN
SCALE: 1" = 100'



PROFILE
SCALE: 1" = 100'



| | | | |
|--------------------|-----|---------------------|---|
| Project Dwg. No. | | THOMPSON PASS CVE 2 | |
| Sheet No. | 1 | Revision No. | 0 |
| For New Work See | N/A | | |
| For Demolition See | N/A | | |

AUTOCAD DWG. DO NOT REVISE MANUALLY.

| NUMBER | TITLE | REV. | DATE | DESCRIPTION | DWN. | CKD. | APP. | REV. | DATE | DESCRIPTION | DWN. | CKD. | APP. | DATE | SCALE | SHEET | OF |
|--------|-------|------|------|-------------|------|------|------|------|------|-------------|------|------|------|----------|-----------|-------|----|
| | | | | | | | | | | | | | | 06-12-13 | 1" = 100' | 1 | 1 |

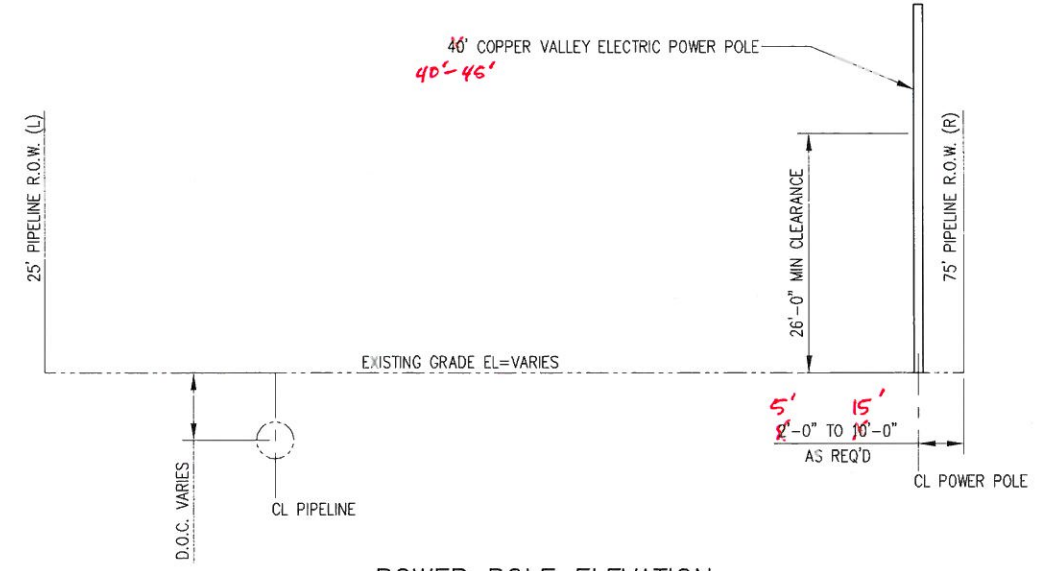
GENERAL NOTES

REFERENCE DRAWINGS

REVISIONS

REVISIONS

| | | | | | | | |
|------|-----|------|-----|----------|--|------|--|
| DWN. | XXX | APP. | XXX | DWG. NO. | | REV. | |
| CKD. | XXX | APP. | XXX | | | | |



POWER POLE ELEVATION
SCALE: 1" = 10'

| | | |
|--------------------|---------------------|----------------|
| Project Dwg. No. | THOMPSON PASS CVE 3 | |
| Sheet No. | 1 | Revision No. 0 |
| For New Work See | N/A | |
| For Demolition See | N/A | |

AUTOCAD DWG. DO NOT REVISE MANUALLY.

| |
|------|
| X |
| X |
| XXXX |
| XXXX |
| XXXX |

| NUMBER | TITLE | REV. | DATE | DESCRIPTION | DWN. | CKD. | APP. | 0 | MO/YR | REV. | DATE | DESCRIPTION | XXX | XXX | XXX | DWN. | APP. | XXX | XXX | XXX | |
|--------|-------|------|------|-------------|------|------|------|---|-------|------|------|-------------|-----|-----|-----|------|------|-----|-----|-----|--|
| | | | | | | | | | | | | | | | | | | | | | |

GENERAL NOTES

REFERENCE DRAWINGS

REVISIONS

REVISIONS

| | | |
|----------------|-----------------|------------------|
| DATE: 06-12-13 | SCALE: 1" = 10' | SHEET --- OF --- |
|----------------|-----------------|------------------|

AFFECTED BY: FILE DATE: 06-17-13 PLOT SCALE: 1:1 FILENAME: FILENAME.DWG