

Location Map



The Alaska Energy Corporation request for coal disposal near Canyon Creek includes 21 sections containing 13,175 acres.

Legend

- Anadromous Fish Streams
- RS 2477 trail
- Coal Leasing Area

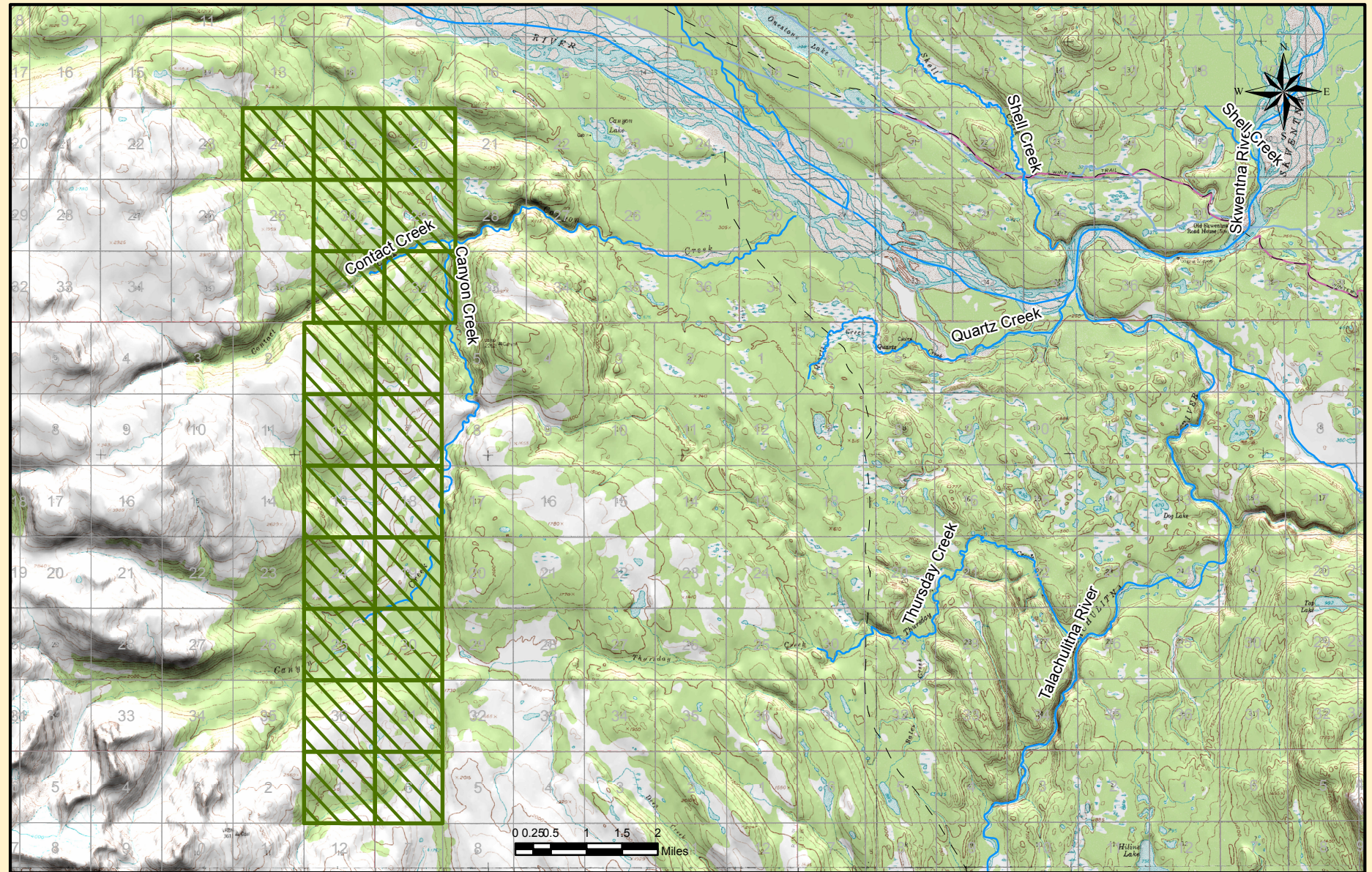


Plate 1: Canyon Creek Coal Leasing Area

Albers Projection
 Central Meridian: -96
 1st Std Parallel: 20
 2nd Std Parallel: 60
 Latitude of Origin: 40

