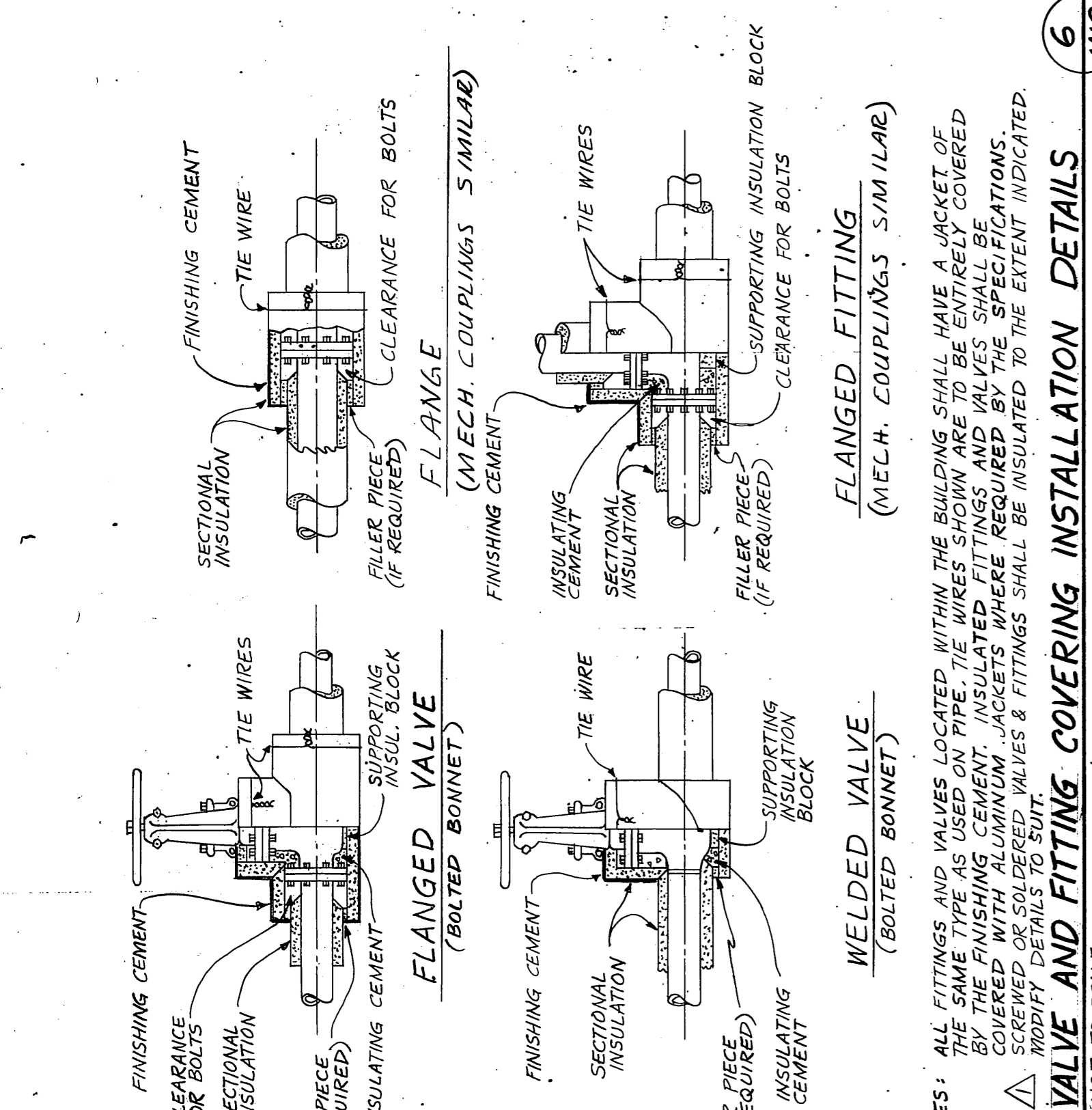
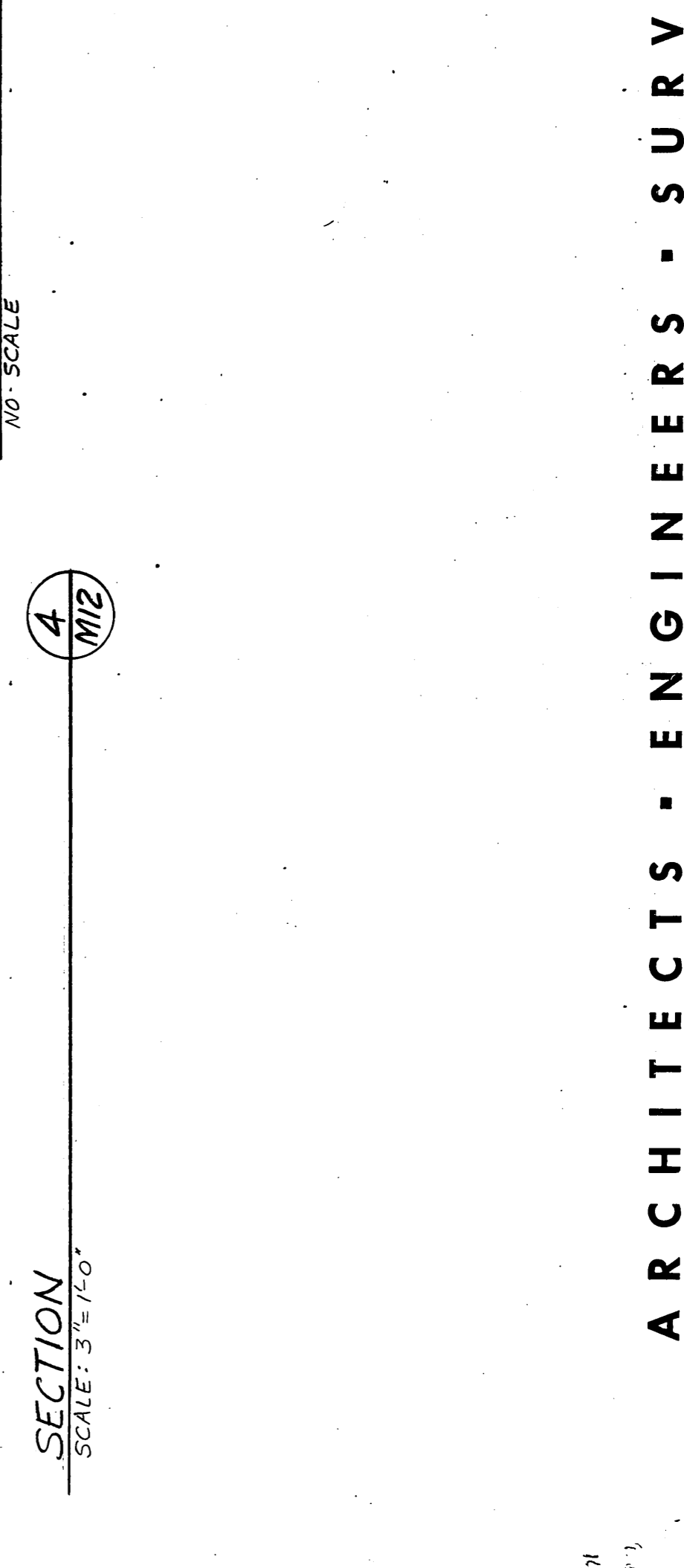
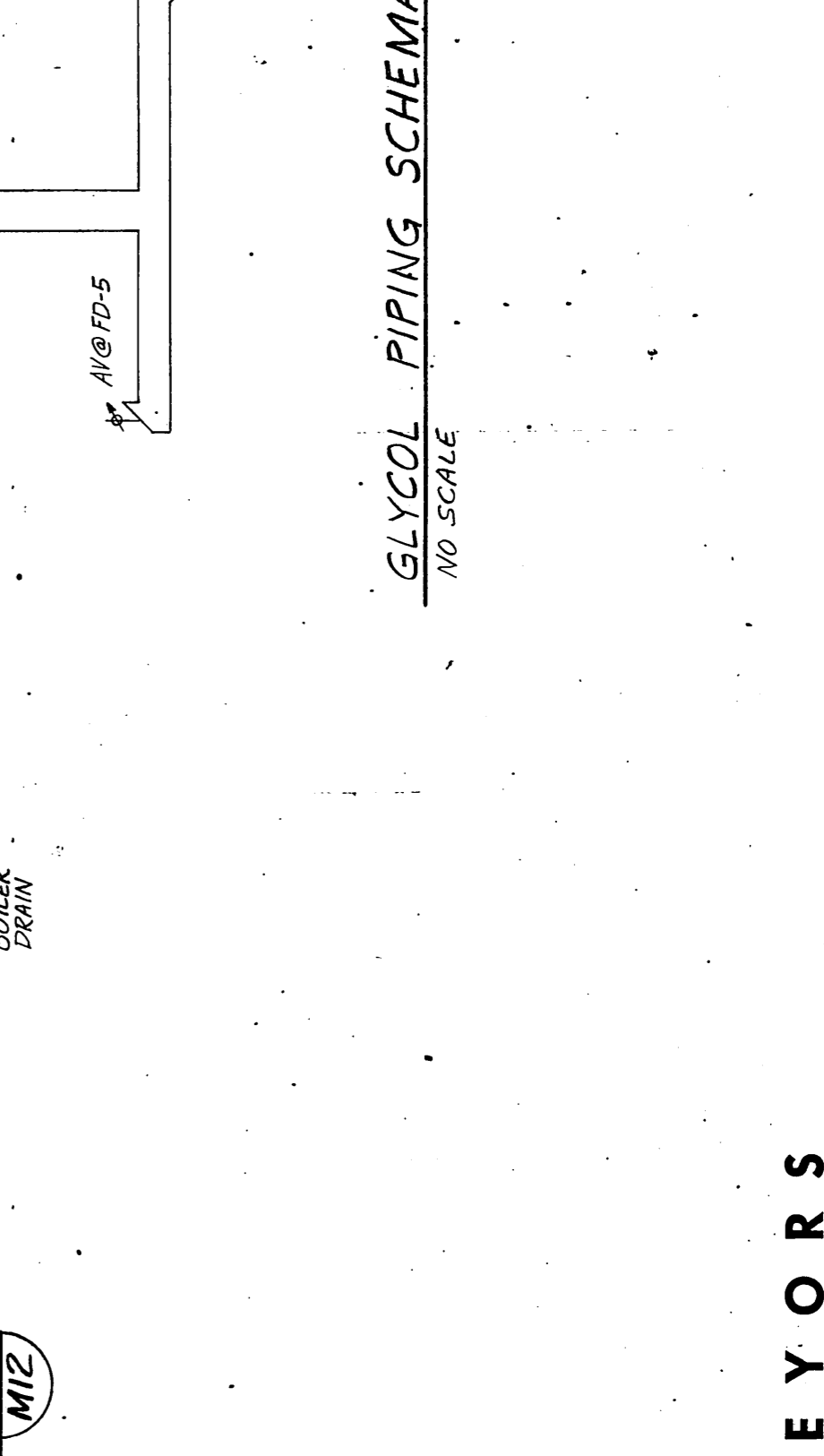
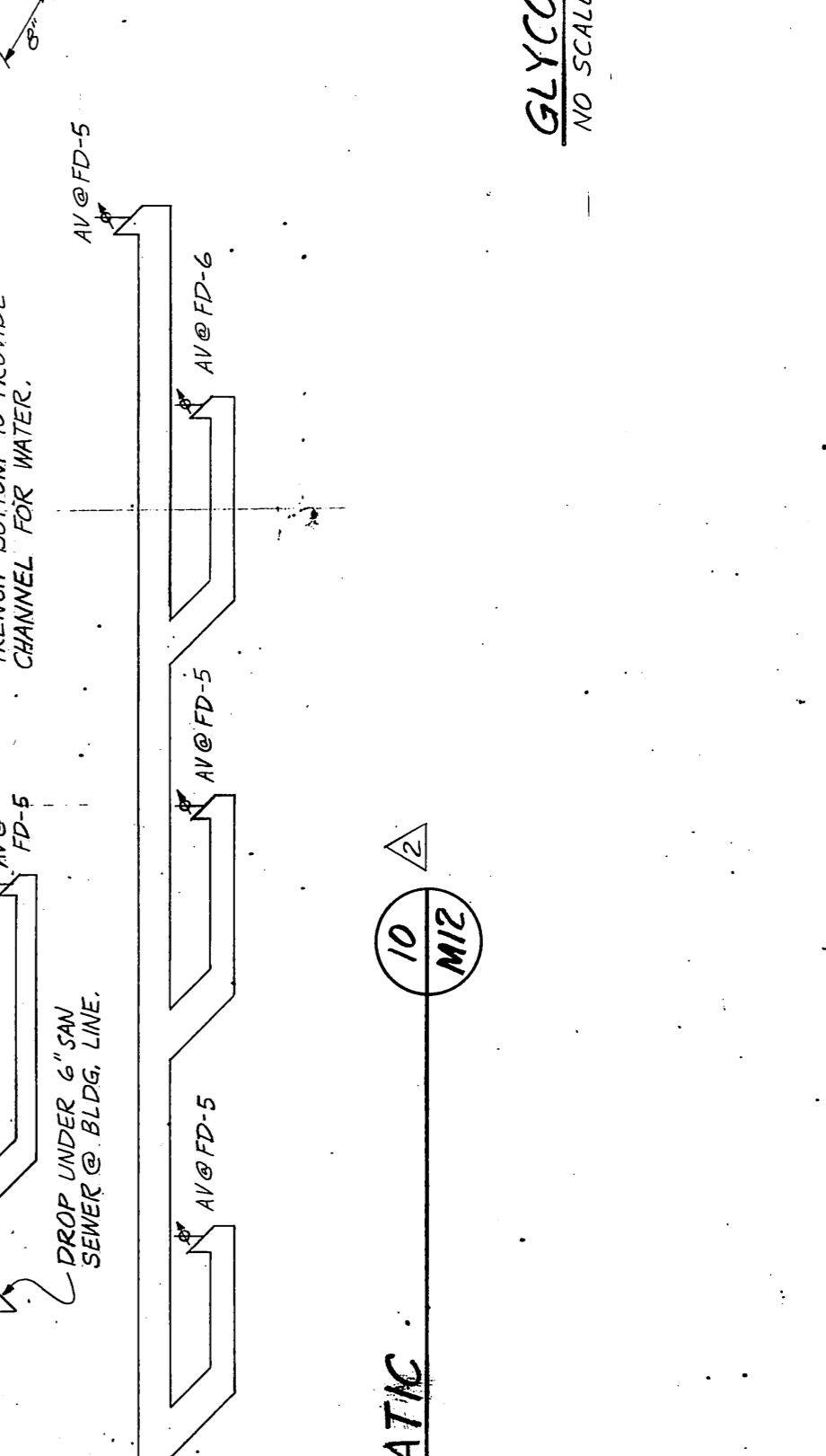
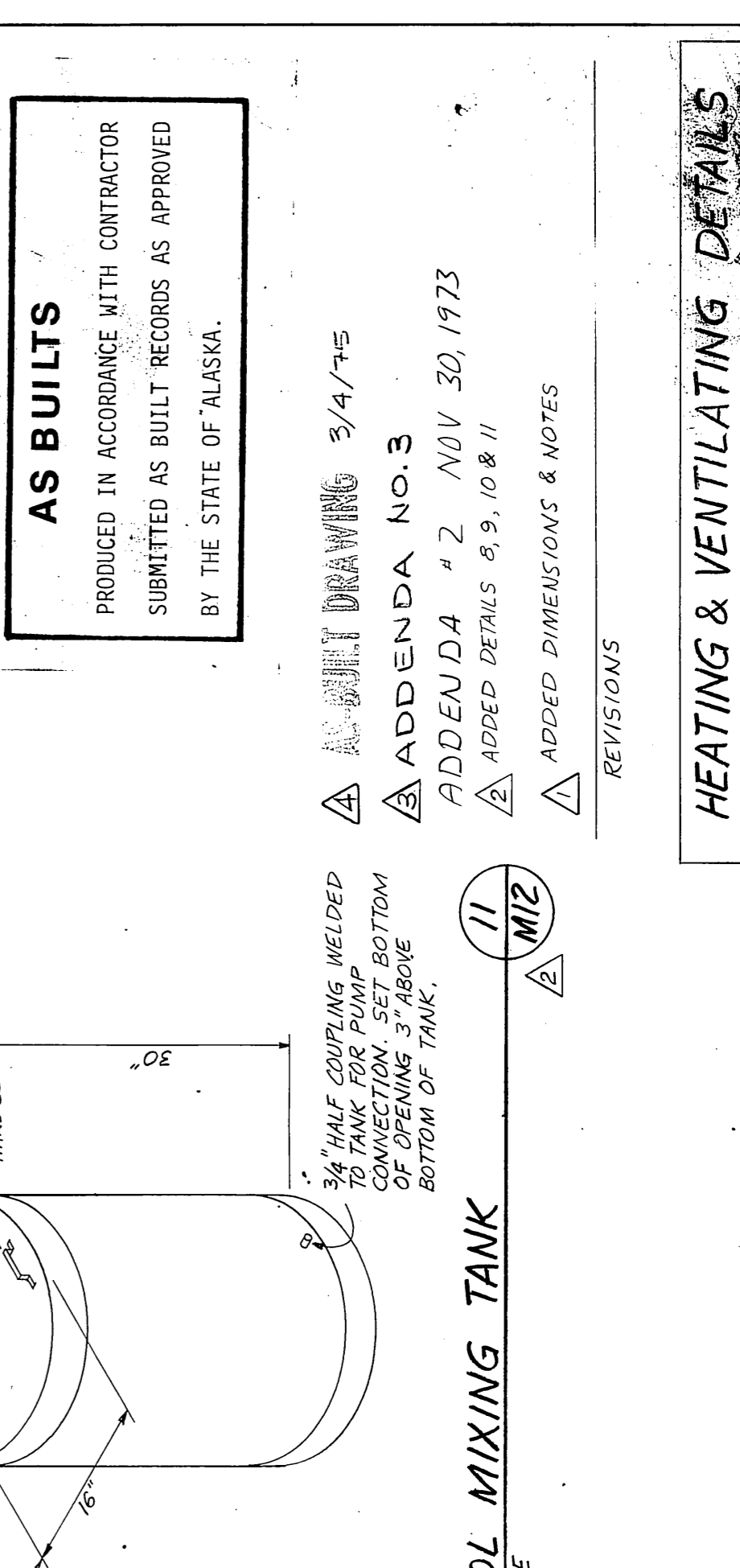
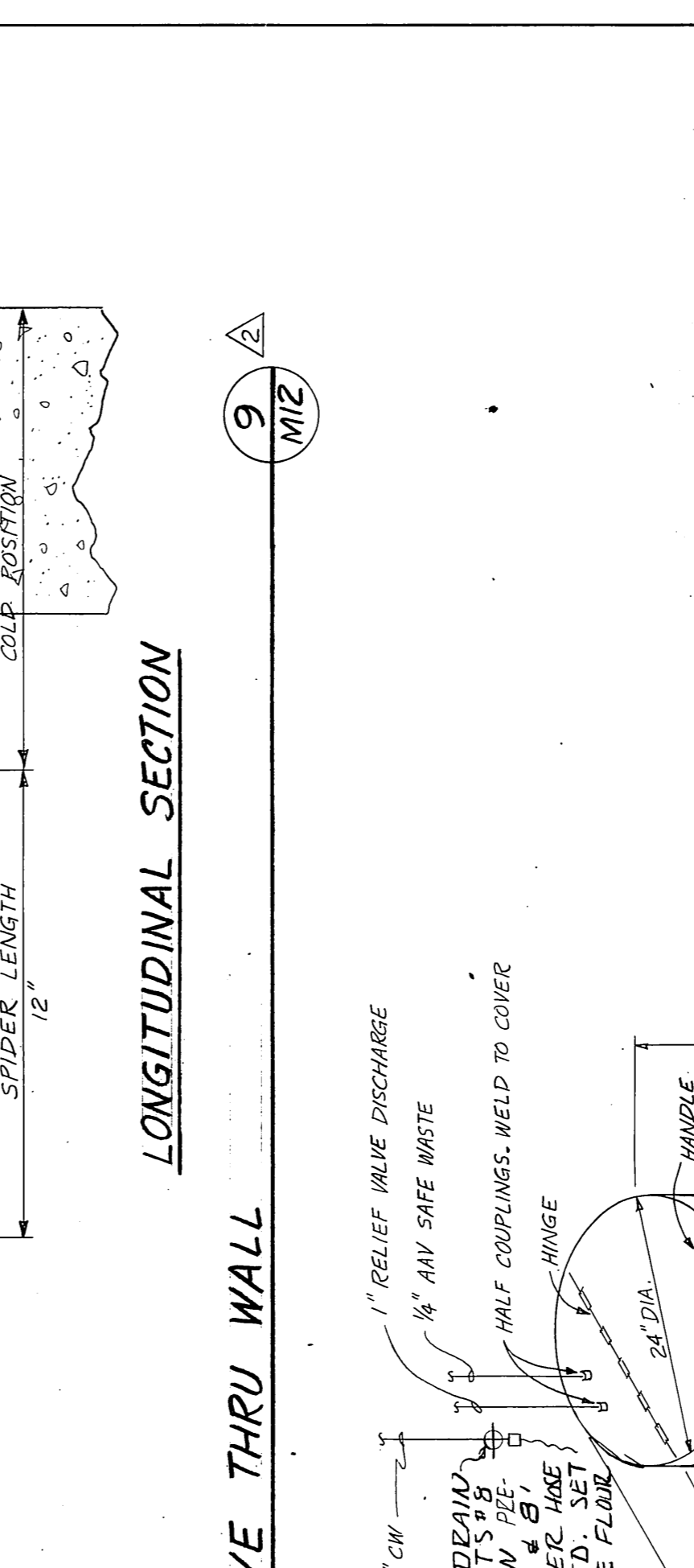
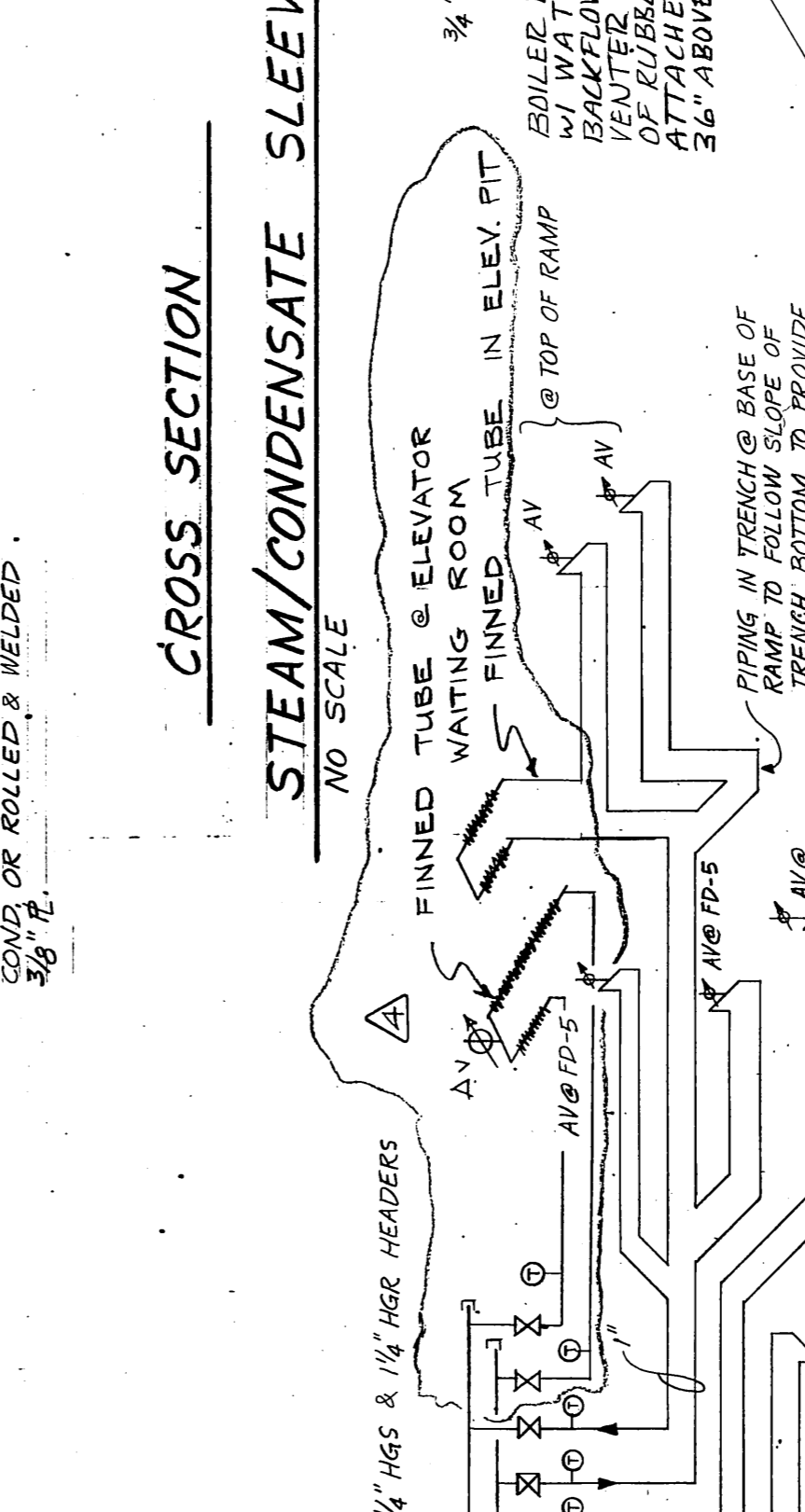
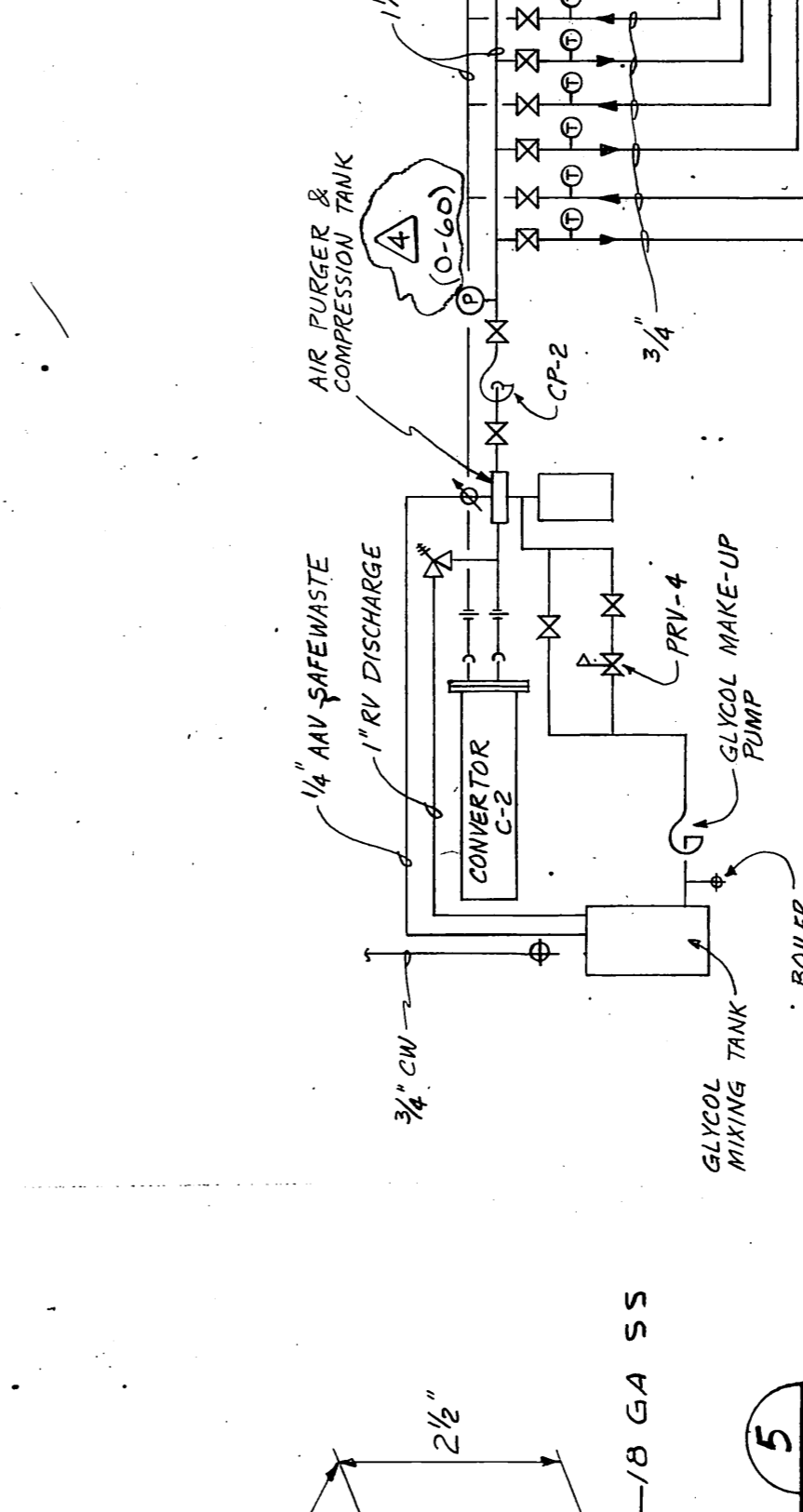
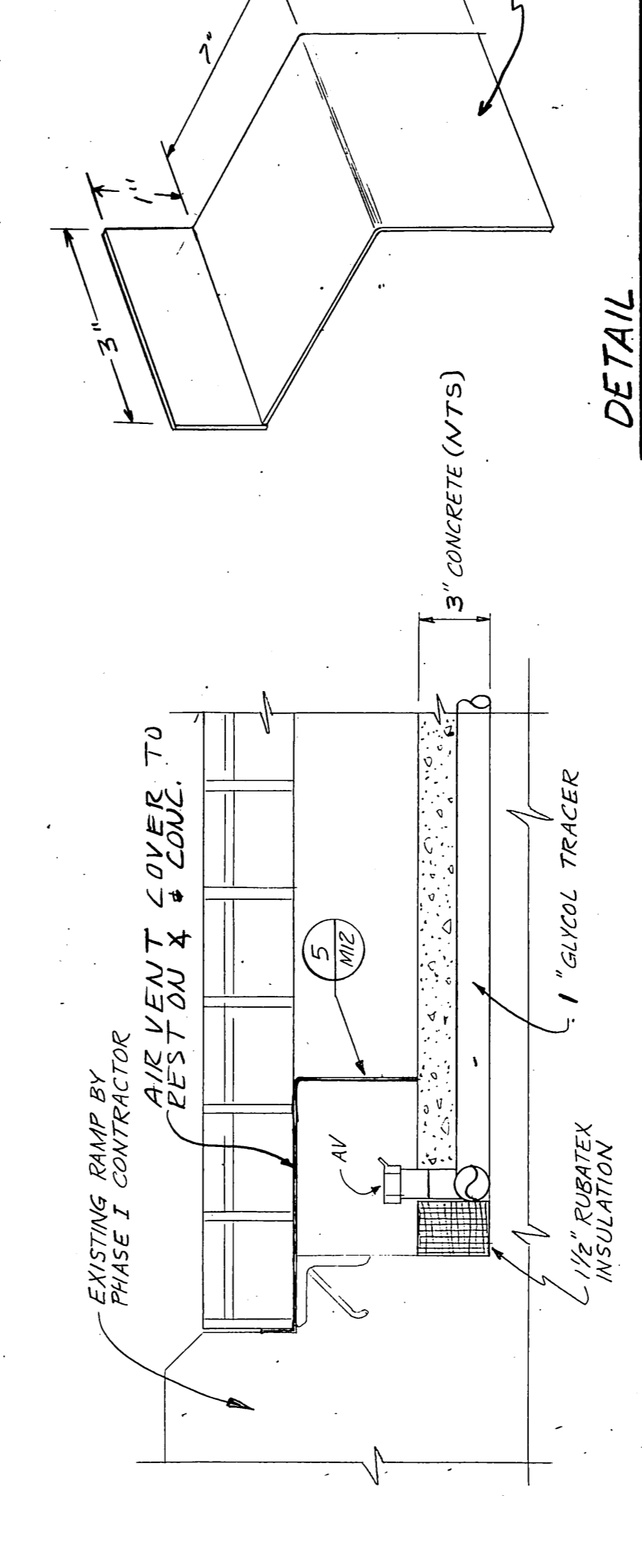
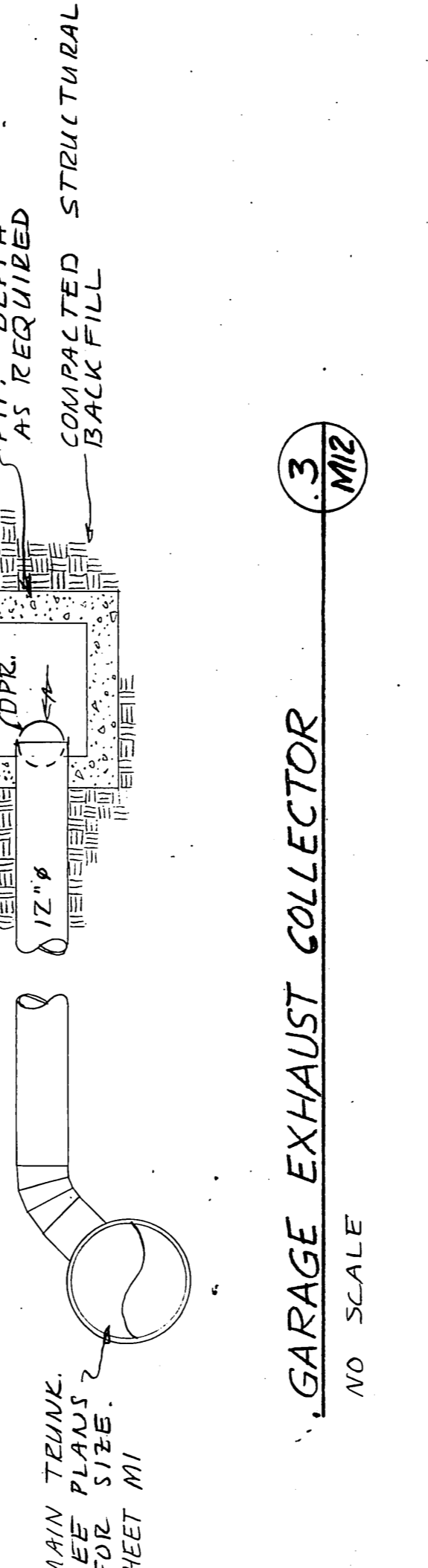
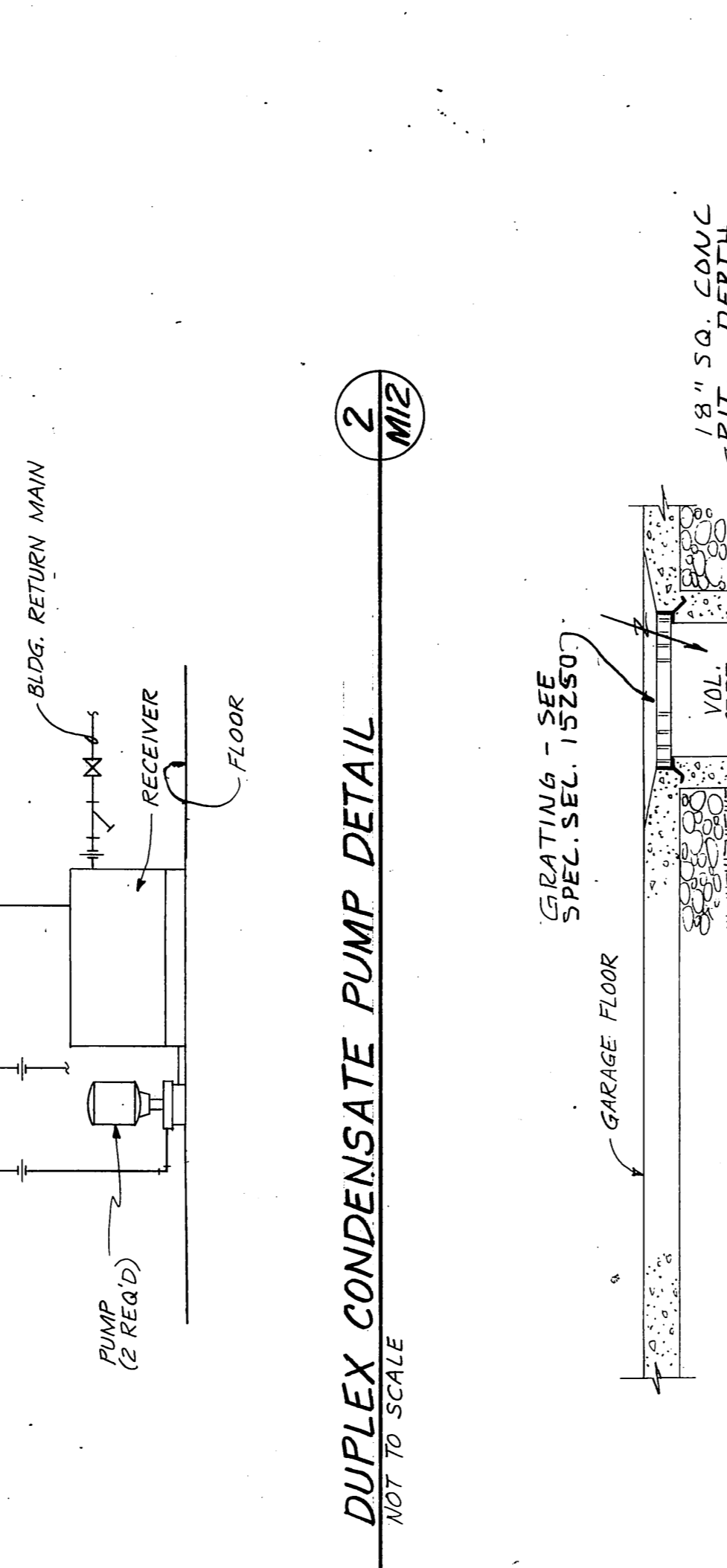
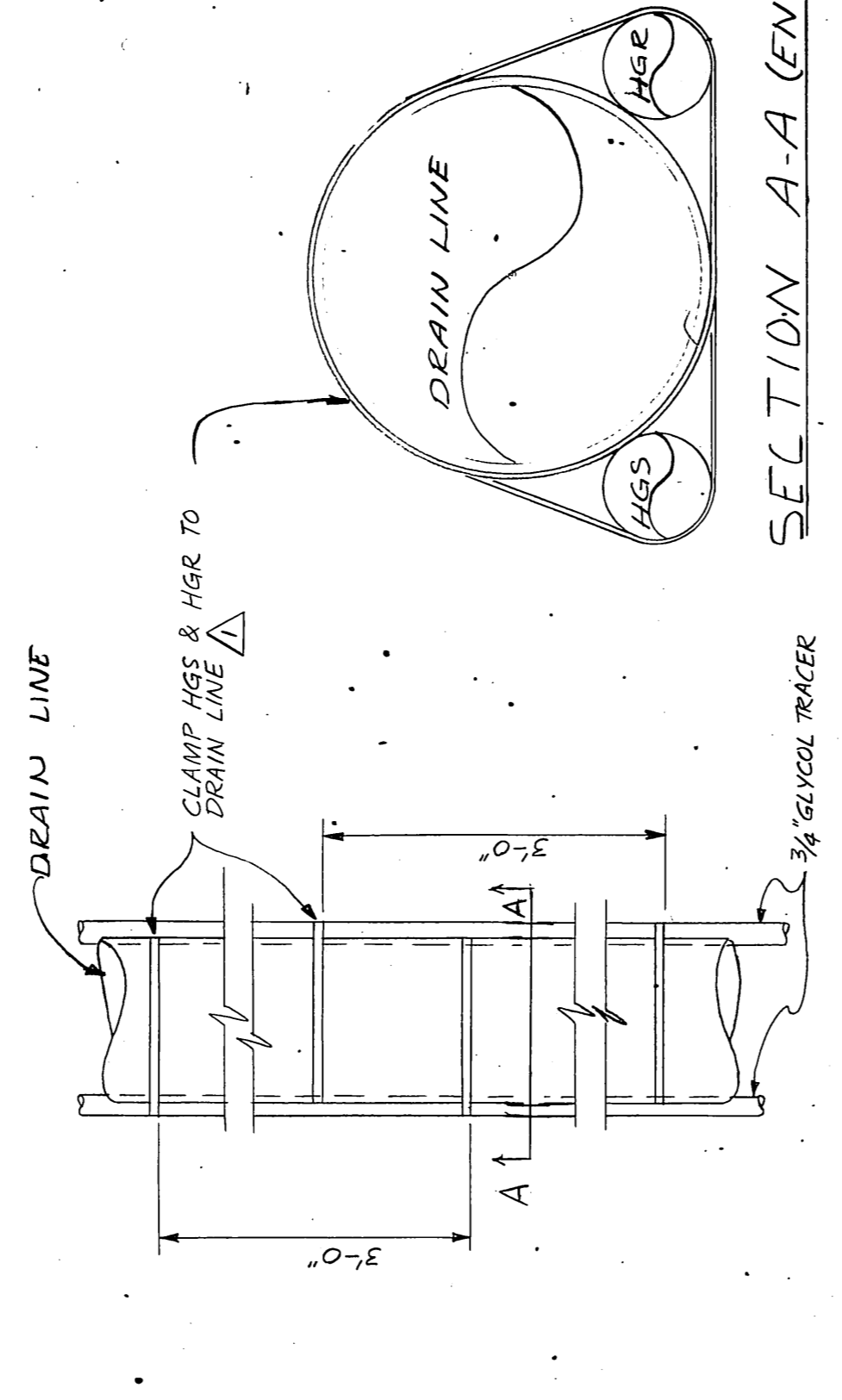
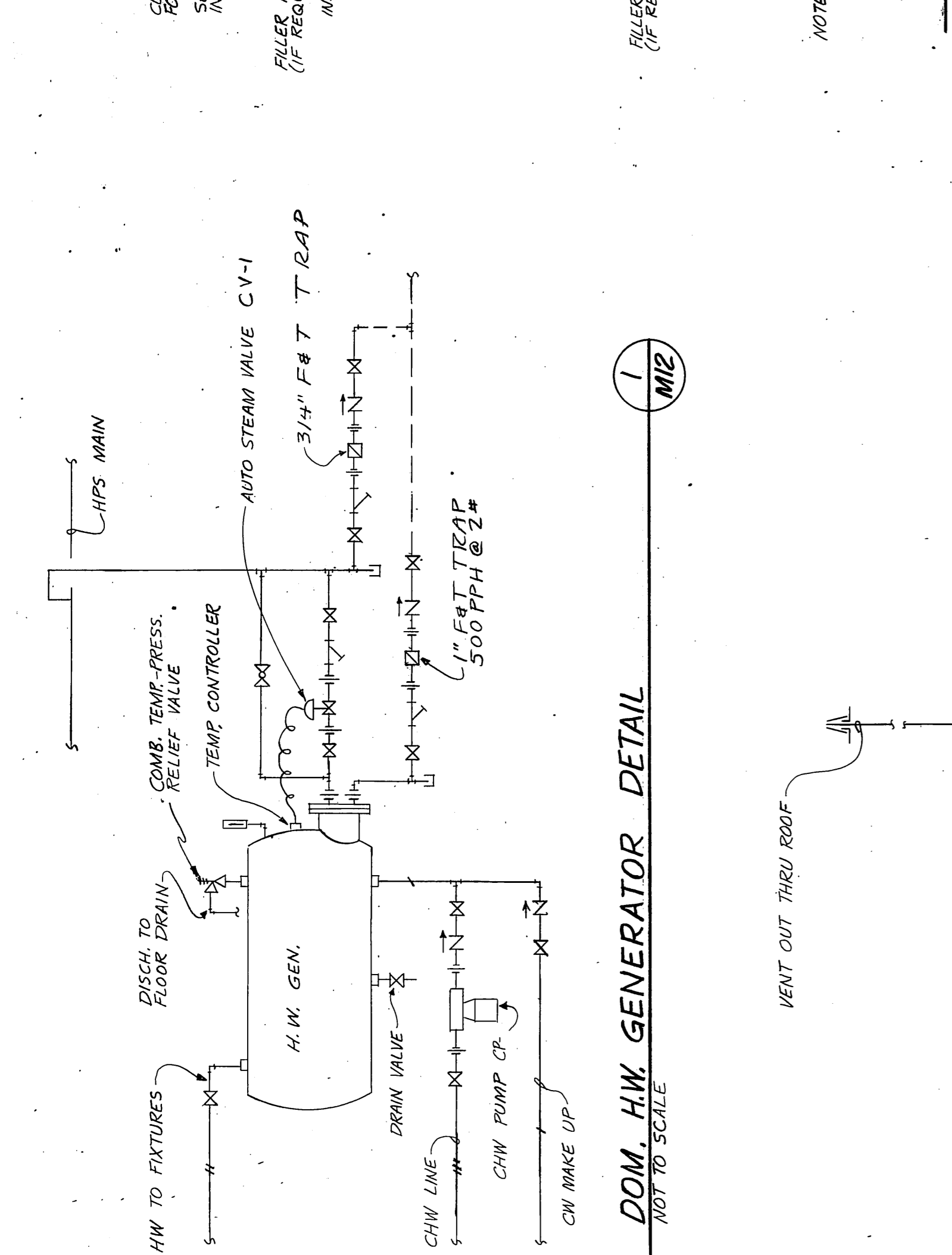
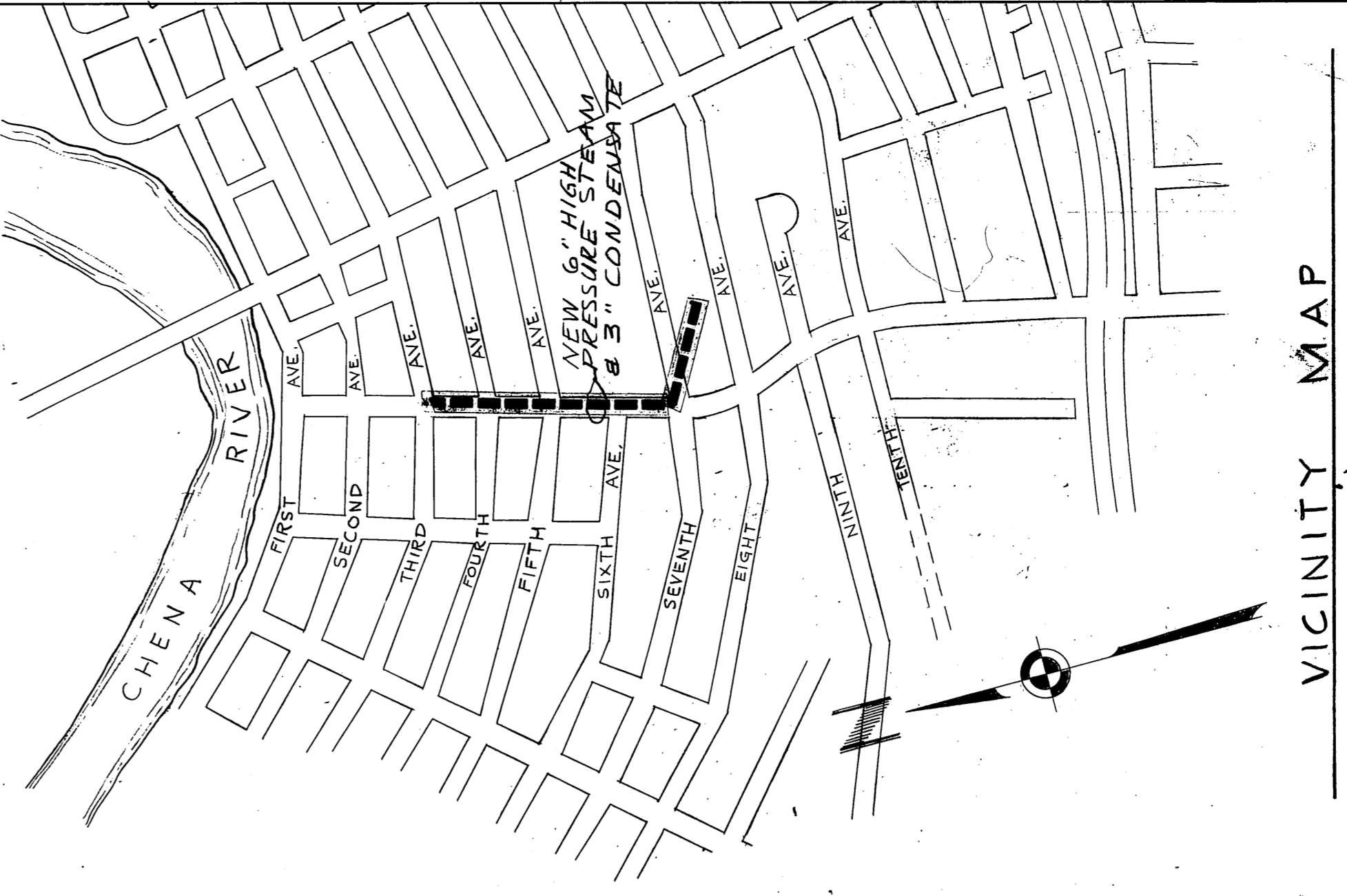
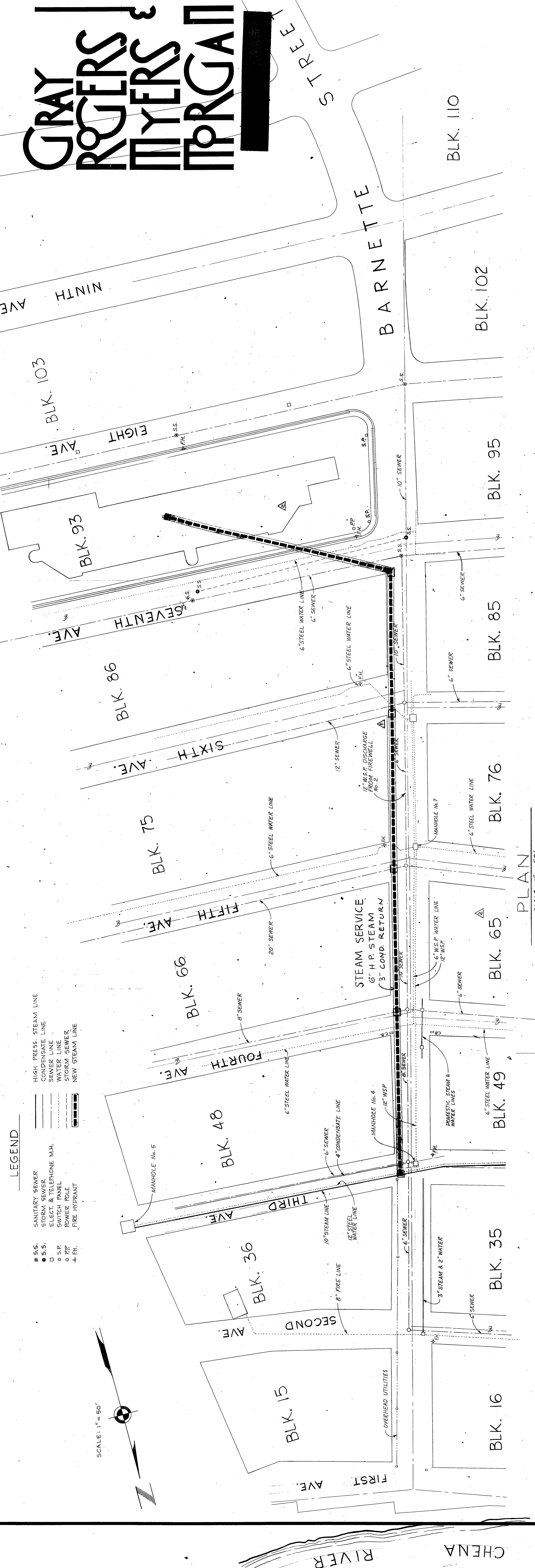


NOTE: SEE SMACNA LOW VELOCITY DUCT CONSTRUCTION STANDARDS PLATE 58 FOR JOINT DETAILS.



NOTES: ALL FITTINGS AND VALVES LOCATED WITHIN THE BUILDING SHALL HAVE A JACKET OF FINISHING CEMENT. INSULATION SHALL BE COVERED BY THE FINISHING CEMENT. INSULATED FITTINGS AND VALVES SHALL BE COVERED WITH ALUMINUM JACKET WHERE REQUIRED BY THE SPECIFICATIONS. MODIFY DETAILS TO SUIT.

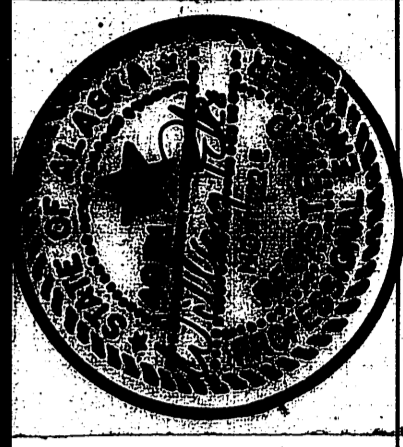




VICINITY MAP

AS-BUILT DRAWING 3/4/75
 ADDENDA NO. 2
 ADDENDA NO. 1
 STEAM PLAN

AS BUILTS
 PRODUCED IN ACCORDANCE WITH CONTRACTOR
 SUBMITTED AS BUILT RESPONSE AS APPROVED
 BY THE STATE OF ALASKA



FAIRBANKS REGIONAL OFFICE BUILDING
 DEPT. 5 - 2110 - BLOCK 22A - FAIRBANKS, ALASKA

PHASE TWO
 ARCHITECTS - ENGINEERS - SURVEYORS
 601 COLLEGE ROAD, FAIRBANKS, ALASKA 99701, PHONE 452-1241

JOB NO. 1905-171
 DATE: JULY 13, 1973

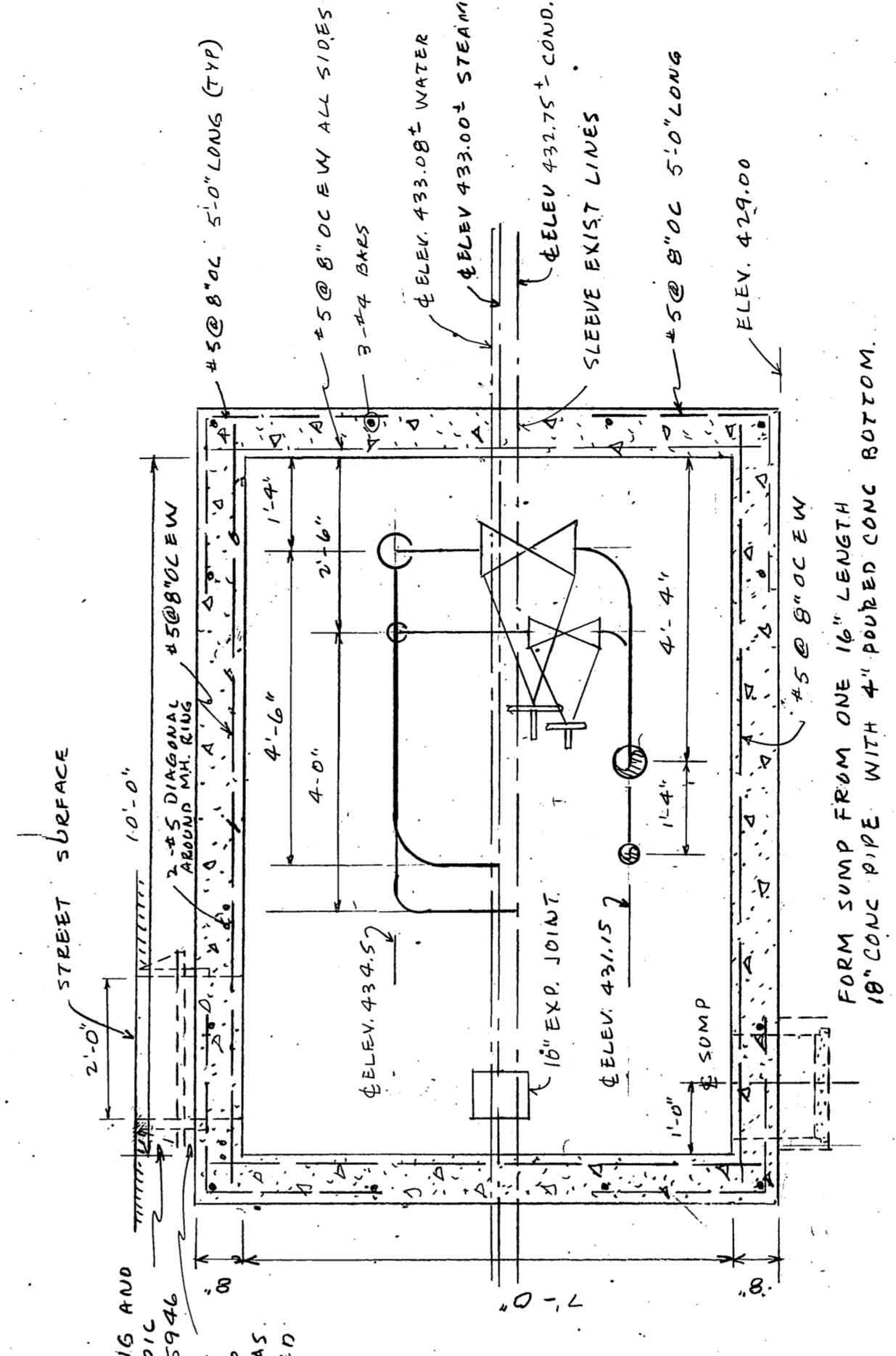
- LEGEND**
- S.S. SANITARY SEWER
 - S.S. STORM SEWER
 - S.S. ELECTRICAL
 - S.S. TELEPHONE
 - S.S. WATER
 - S.S. FIRE
 - S.S. GAS
 - S.S. OIL
 - S.S. STEAM
 - S.S. CONDENSATE
 - S.S. NEW STEAM

SCALE: 1" = 80'

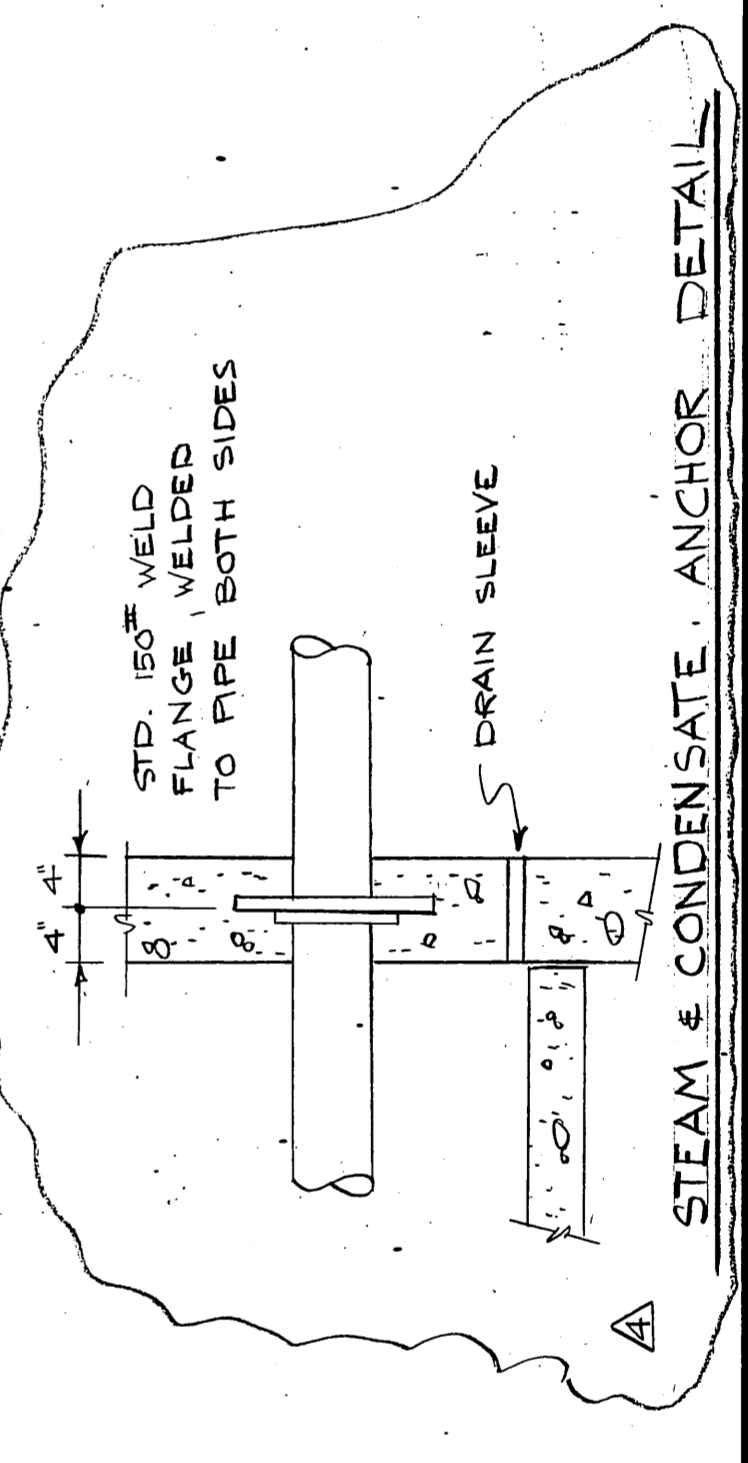
PLAN SCALE 1" = 50'

PLAN SCALE 1/2" = 1'-0"

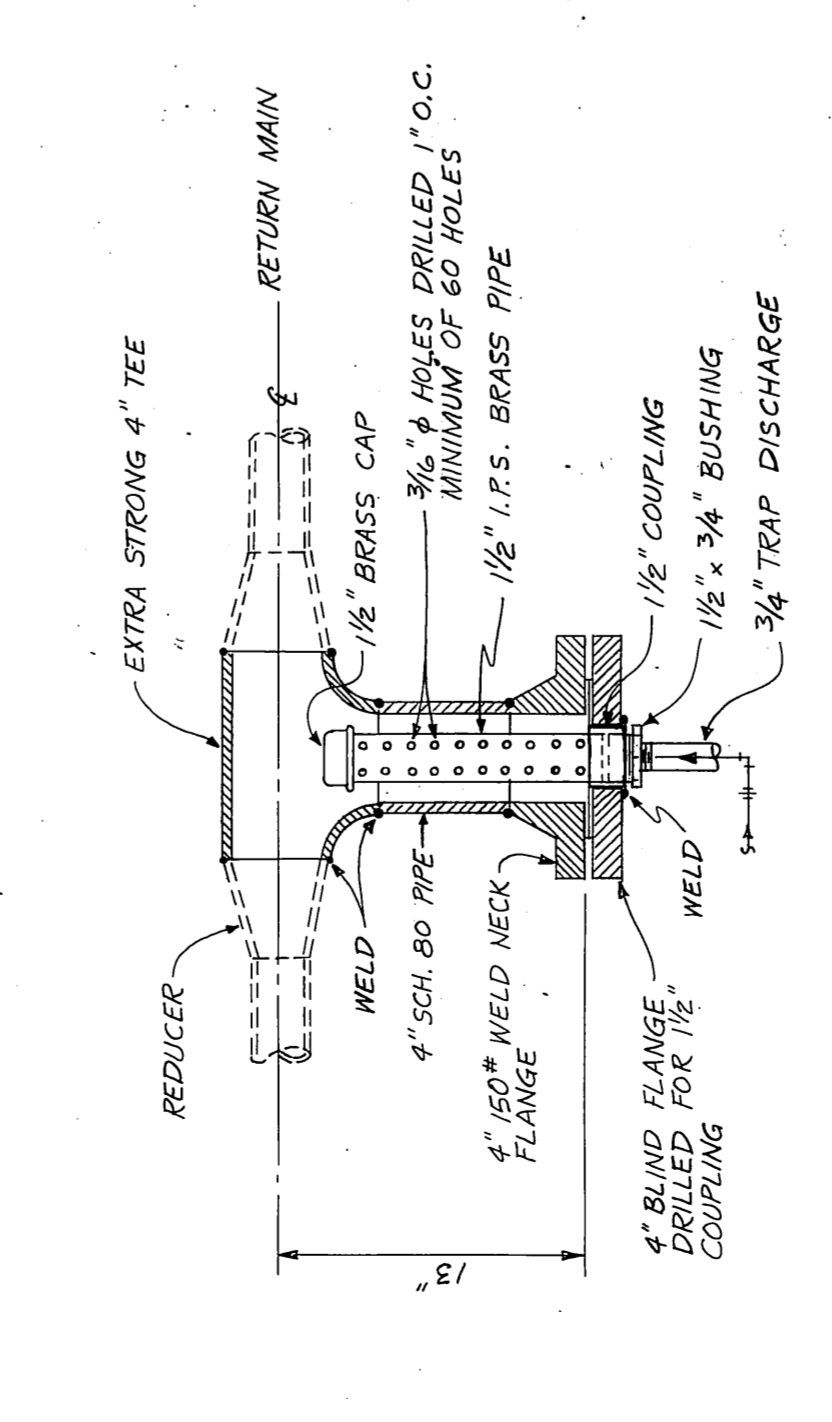
SECTION SCALE 1/2" = 1'-0"



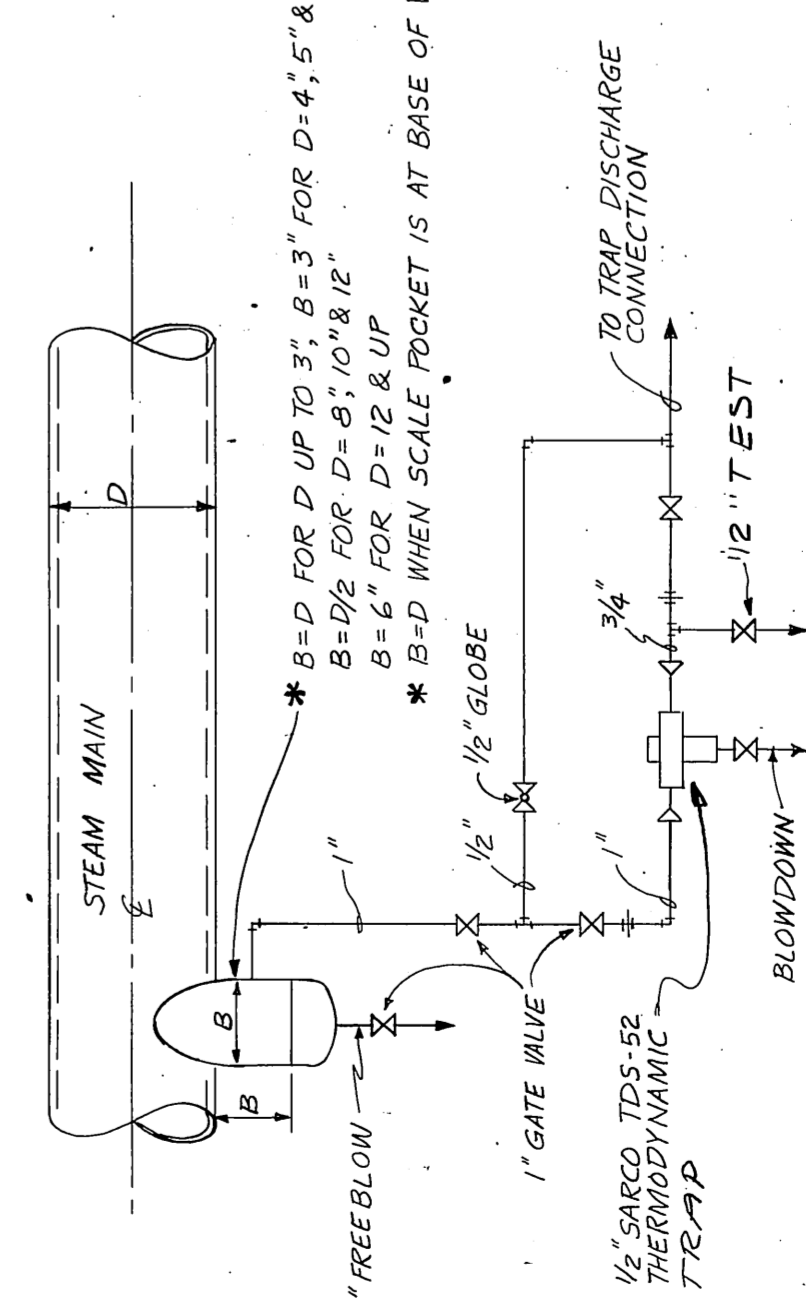
MANHOLE AT THIRD & BARNETTE



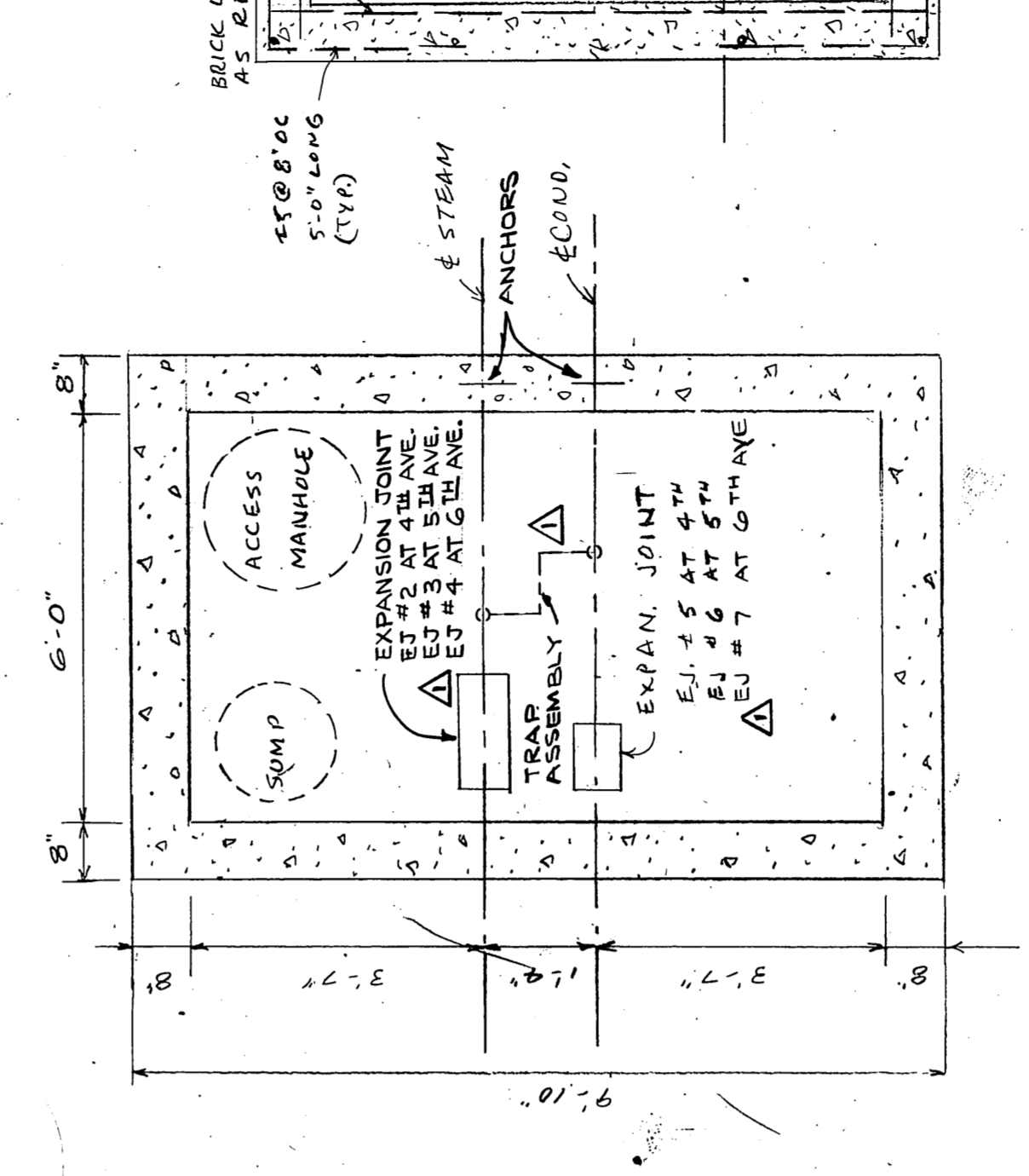
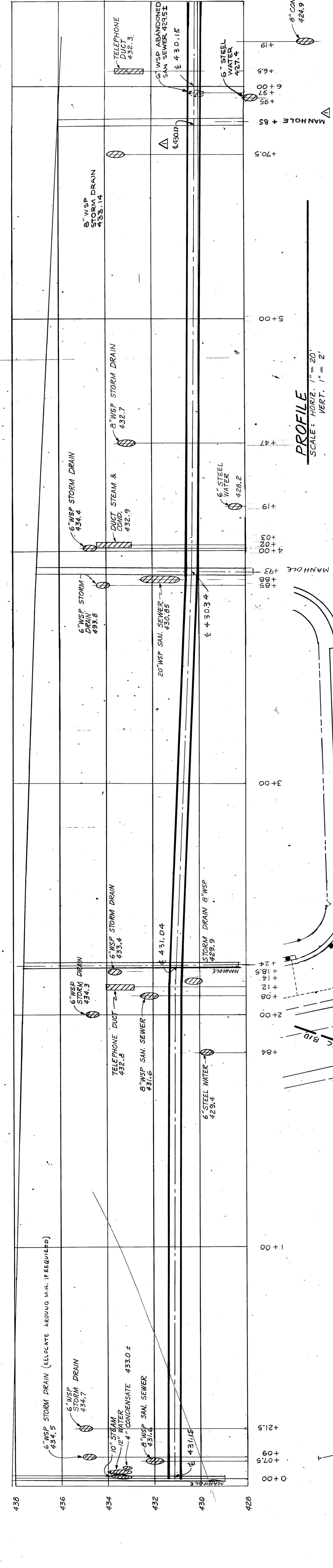
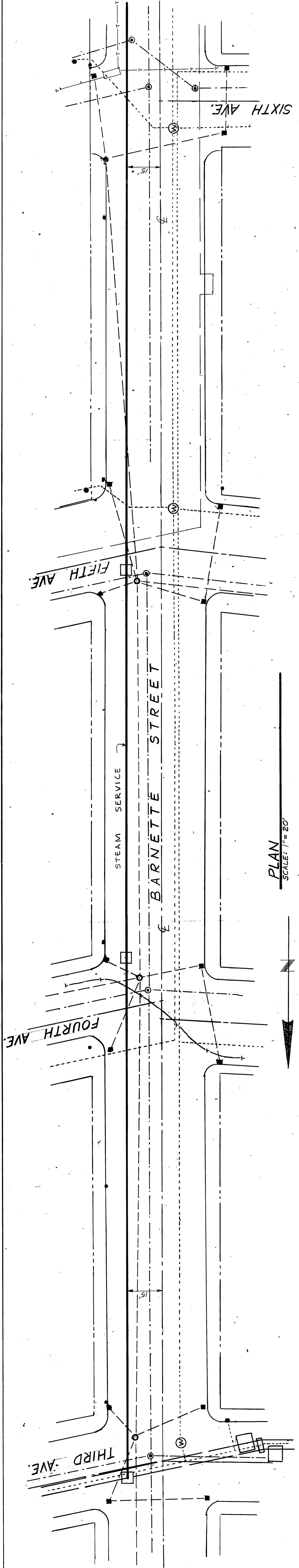
STEAM & CONDENSATE ANCHOR DETAIL



TRAP DISCHARGE CONNECTION NO SCALE

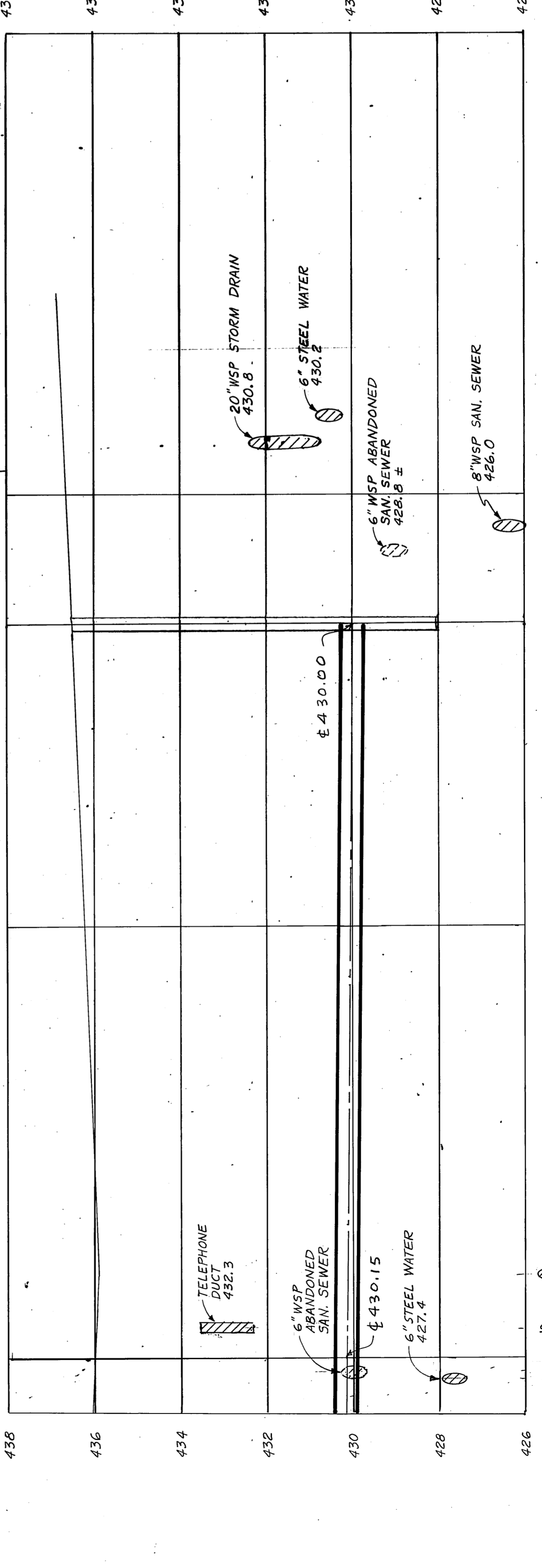


TRAP ASSEMBLY FOR MAINS NO SCALE



NOTE: SLOPE OF LINES SHALL CHANGE INSIDE THE MANHOLE

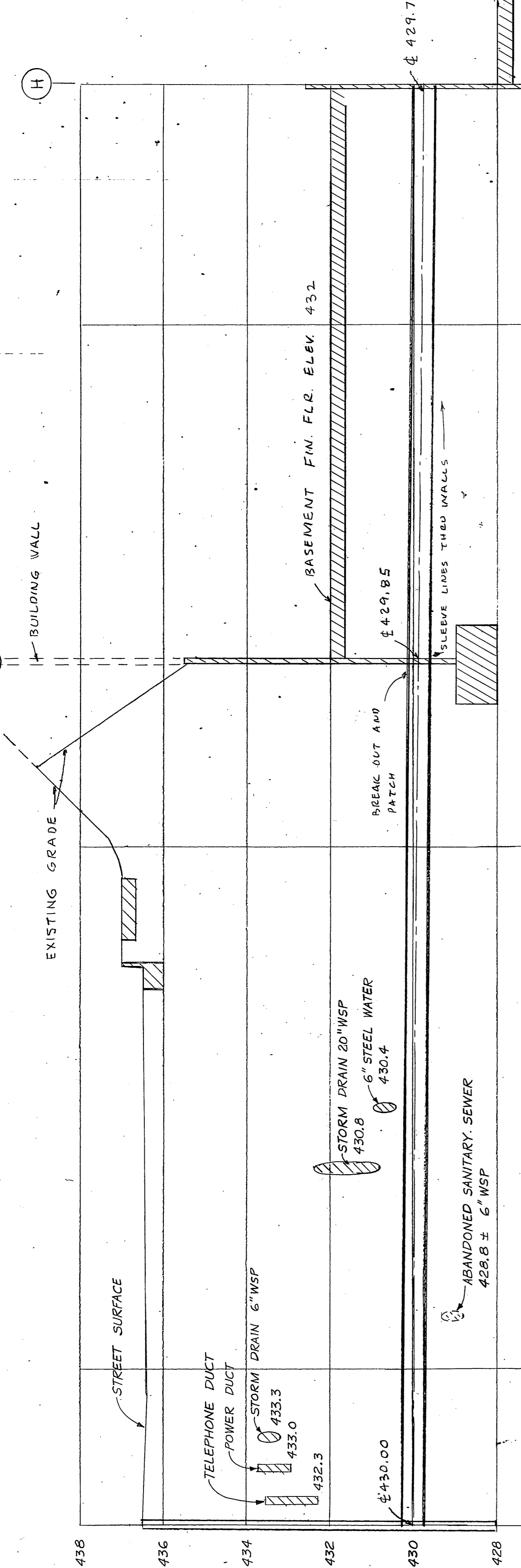
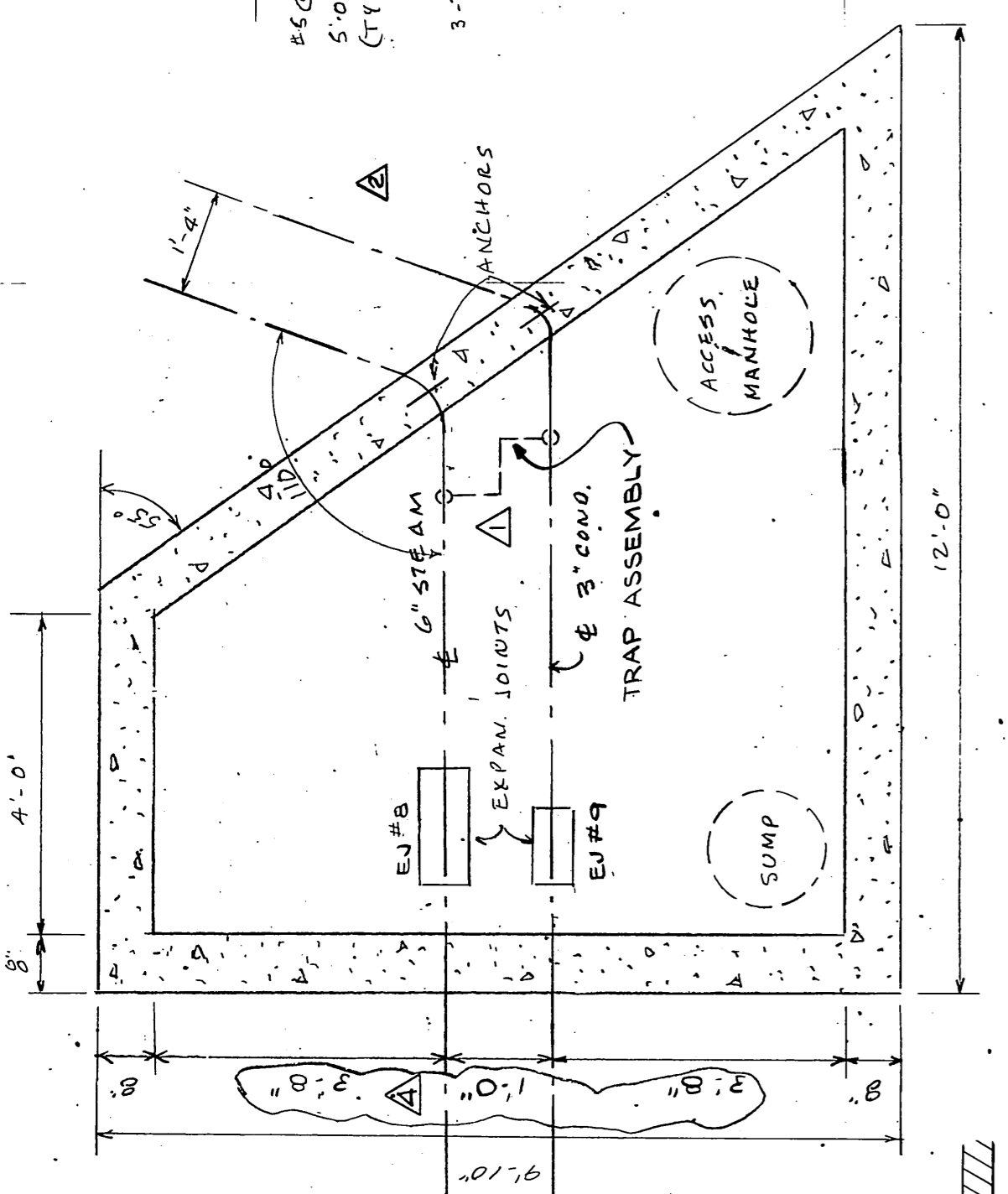
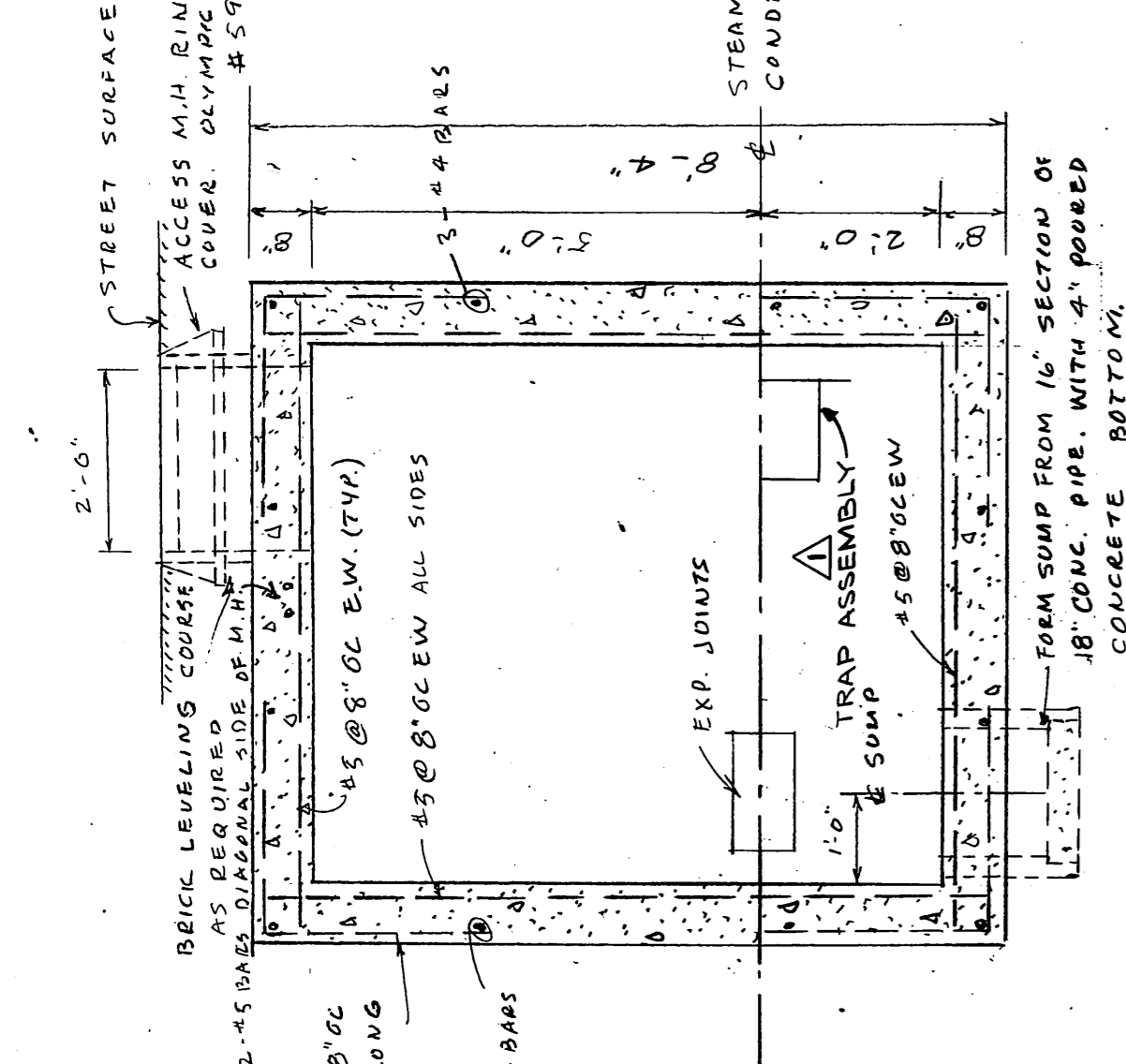
- LEGEND**
- S — STEAM & COND. THIS CONTRACT.
 - S — EXISTING STEAM AND COND.
 - S — SANITARY SEWER LINES
 - S — STORM DRAIN LINES
 - S — WATER LINES
 - S — UNDERGROUND POWER & TELEPHONE
 - S — STREET CENTERLINE
 - S — CURB LINES
 - S — PROPERTY LINES
 - S — SANITARY SEWER MANHOLE
 - S — STORM DRAIN MANHOLE
 - S — CATCH BASIN
 - S — FIRE HYDRANT
 - S — WATER MANHOLE
 - S — POWER POLE OR STREET LIGHT POLE



AS BUILT
PRODUCED IN ACCORDANCE WITH CONTRACTOR SUBMITTED AS BUILT RECORDS AS APPROVED BY THE STATE OF ALASKA

ADDENDA NO. 2
ADDENDA NO. 1
STEAM SERVICE - PLAN & PROFILE

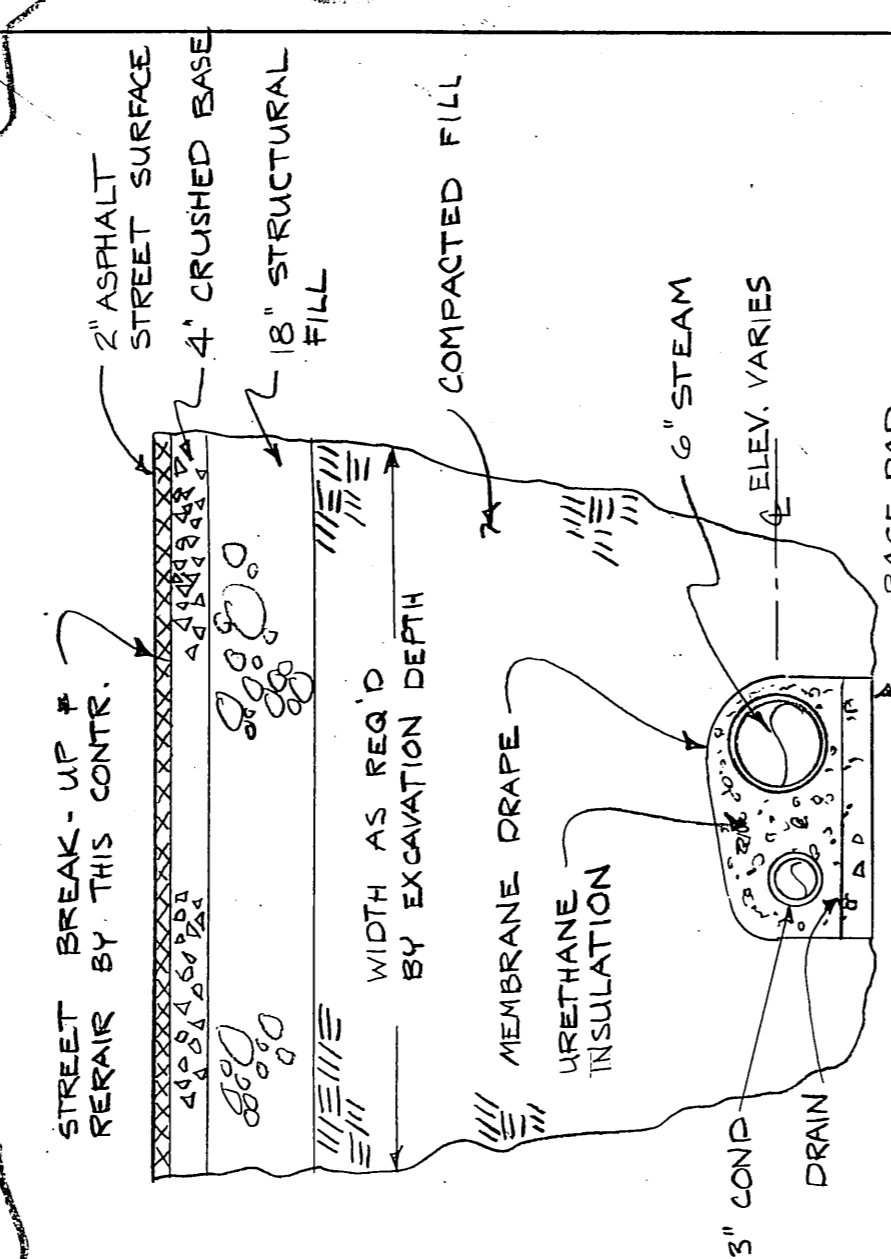




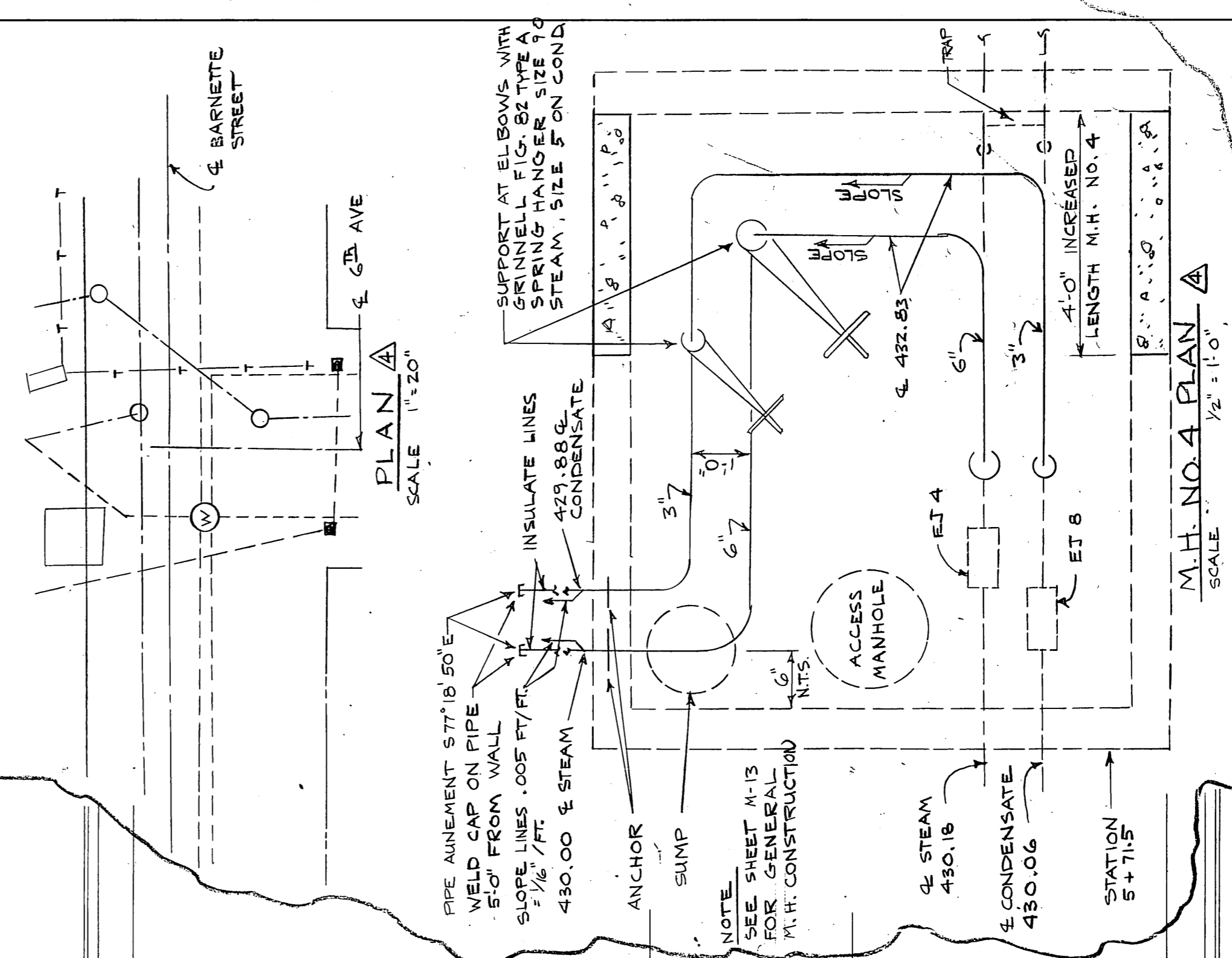
SECTION
SCALE: 1/2" = 1'-0"

MANHOLE AT SEVENTH & BARNETTE
MANHOLE IN ALTERNATE BID NO. 1

PROFILE
SCALE: HORIZ. 1" = 16'-0"
VERT. 1" = 2'-0"
NOTE: SCALE CHANGE



TYPICAL SECTION THRU
STEAM & CONDENSATE
LINES
NO SCALE

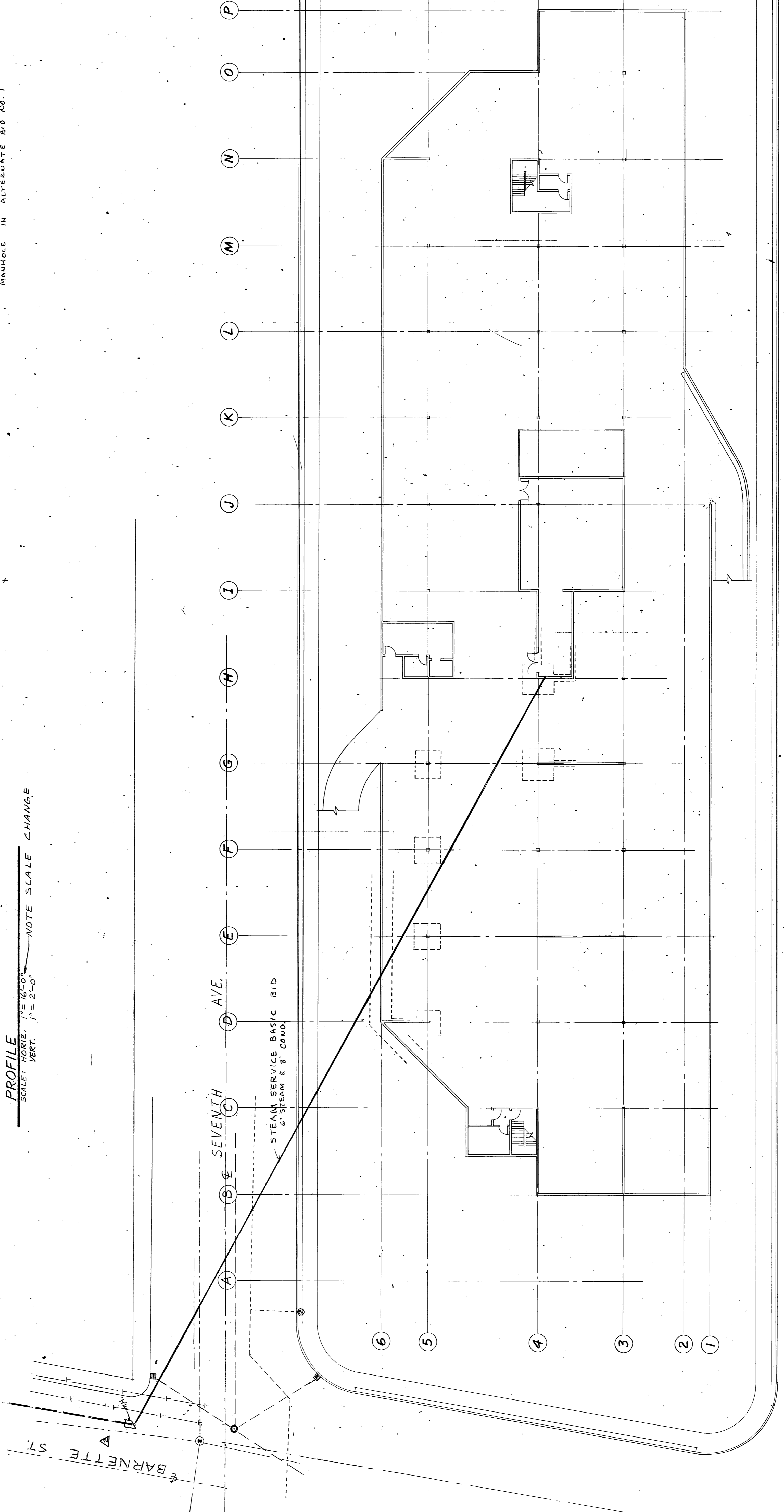


M.H. NO. 4 PLAN
SCALE: 1/2" = 1'-0"

NOTE:
OVERALL M.H. SIZE
4' L x 4'10" W x 8'4" H

AS-BUILT DRAWING 3/4/15
ADDENDA NO. 2
ADDENDA NO. 1

PARKING LEVEL PLAN
SCALE: 1/8" = 1'-0"



JOB NO: 1705-171
DATE: 06/12/17

ARCHITECTS - ENGINEERS - SURVEYORS
601 COLLEGE ROAD, FAIRBANKS, ALASKA 99701, PHONE: 452-1241

STATE OF ALASKA
DEPARTMENT OF PUBLIC WORKS
DIVISION OF BUILDINGS

FAIRBANKS REGIONAL
OFFICE BUILDING
REG. B-3110 - BLOCK 22A - FAIRBANKS, ALASKA

M15
SHEET NO. 1 OF 6



STEAM SERVICE - PLAN & PROFILE

100

MECHANICAL EQUIPMENT SCHEDULE



SYMBOL	ITEM	CAPACITY/SIZE	MOTOR DATA	BASIS OF DESIGN	SYMBOL	ITEM	CAPACITY/SIZE	MOTOR DATA	BASIS OF DESIGN	SYMBOL	ITEM	CAPACITY/SIZE	MOTOR DATA	BASIS OF DESIGN
	Condensing Coils	84, 800 sq ft. jacketed, 24" x 80" condensing temperature 115°F. 20656 Btu/sq ft. at 600 FPM. Fin height = 8". Fin width = 48". Six (6) coils required.		Pace Type X Coil Series 84, 4 rows deep 144" fin length 38" fin height per coil. Row spilt coils.	PRV-4	Glycol Make-up Valve	3/4" Set at 12 PSI	BAG #12		CP-3	Domestic Water Circulating Pump	20 GPM at 5' head, All bronze, 2 HP	BAG B-100	
	Condensing Fan	90,000 CFM at 3.5" total pressure. Controllable pitch advance fan. Inlet screen and bell. Outlet cone. Explosion proof motor.	75 HP 460 Volt 3 Phase	Joy Series 1000 Model 60-26-1/2-1150 Arrangement 4 Horizontal mounting		Glycol Relief Valve	150,000 BTU/Hr. Set at 30 PSI 3/4" x 1 1/2" discharge to mixing tank	BAG #175		CP-4	Domestic Hot Water Circulating Pump	10 GPM at 7' head, All bronze, 3/4" IPS	BAG B-75	
CV-2	Glycol Converter Valve	100 GPH steam inlet, 20 PSI steam outlet.		Humidifier		Glycol Hot Water Generator	525 GPH at 20 PSI discharge set at 20-30 PSI	Coilide Balanced Flow BF03S		EWB	Electric Water Heater	1-1/2 gallon glass lined tank with insulated jacket.	National NSC-1-1/2 Wash Basin Special	
CV-3	Hot Water Converter Valve	1/3 capacity control. 600 GPH. 30 PSI steam inlet, 20 PSI steam outlet.		Heating Coil		Hot Water Generator	148 GPH 90 PSI inlet 5 PSI outlet set for 140°F water temperature. Cv = 2.2. 1/2" size.	Roller-Stopless RT-1003-F with 48" A body, type GA SS separable socket with lagging extension, integral thermometer.		PRV-1	Domestic Water Pressure Reducing Valve	Primary Valve 80 GPM at 10 PSI inlet. Set at 50 PSI. 1-1/2" size.	Watts 22SS	
CV-4	Hot Water Converter Valve	2/3 capacity control. 600 GPH. 30 PSI steam inlet, 20 PSI steam outlet.		Heating Coil		Generator Control Valve	23032 CFM	Tempmaster AFC-30		PRV-2	Domestic Water Pressure Reducing Valve	Secondary Valve, 80 GPM at 10 PSI inlet. Set at 40 PSI. 1-1/2" size.	Watts 22SS	
CV-5	Interior Steam Coil Control Valve	686 PPH. 30 PSI steam inlet, 5 PSI steam outlet.		Roll Filter		Perimeter Fan System	23032 CFM				Garage Floor Sump Pump	Duplex set, 250 GPM each at 15' head, 4" discharge	Chicago Type DW Model # LDFC-4	
CV-6	Interior Steam Coil Control Valve	686 PPH. 30 PSI steam inlet, 5 PSI steam outlet.		Roll Filter		Fan	23032 CFM at 5.04" SP	30 HP 460 Volt 3 Phase			Booster Pump	5 GPM at 10 PSI discharge 1/2" x 1/2" 1750 RPM	Sealless Pump	
	Condensate Pump	Duplex set, 60 GPM each. 30 PSI discharge pressure. 100 gallon C.T. receiver.	3 HP 460 Volt 3 Phase 1800 RPM	Toilet Exhaust Fan		Heating Coil	23032 CFM	460 Volt 3 Phase		C-1	Steam-to-water Converter	95 GPM 180 BWT 220 LWT 20 # Steam	BAG SU-105-4	
				Garage Exhaust Fan		Cooling Coil	Refrigerant R-22 DX. Stainless steel drip pans with deep seal copper tubing connected to floor drain. 23032 CFM EDB 81F h = 29.98 Btu/lb LDB 54 h = 22.85 Btu/lb 60 tons nominal	Ferr Roll Clean Size 84-7		CP-1	Hot Water Circulating Pump	95 GPM 15.5 ft. Head 3" size	BAG PD-55	
				Refrigeration Compressor		Roll Filter	Static pressure control to maintain 0.4" SP Media 23032 CFM at 500 FPM	460 Volt 3 Phase			Heating Relief Valve	1,887,000 BTUH 1-1/2" x 2"	BAG #3300 Set at 30 PSI	
				Refrigeration Compressor		Interior Fan System	Carrier Model OHLA228 Across-the-line start, Single pump out control	460 Volt 3 Phase			Air Eliminator	95 GPM in-line type, 3" size	BAG IAF-3	
				Refrigeration Compressor		Fan	Carrier Model OHLA228 Across-the-line start, Single pump out control	460 Volt 3 Phase			Compression tank	24 gallon ASME with gauge glass	BAG #4 with BAG ATF-12	

* 1. with four (4) distributors on each section with no distributor exceeding 15 tons at design conditions.
 * 2. with 15 degree sub-cooling.
 * 3. with four (4) distributors. Each distributor shall not exceed 15 tons at design conditions.

EXPANSION JOINT SCHEDULE

Joint No.	Location	Pipe Traverses	Convolutions	Tube Turns
EP-1	3rd Ave.	10" x 1.41	4	10" U-FRP-C
EP-2	5th Ave.	6" x 5.26	8	6" R-RFP-C
EP-3	6th Ave.	6" x 4.50	7	6" R-RFP-C
EP-4	7th Ave.	6" x 4.35	7	6" R-RFP-C
EP-5	4th Ave.	3" x 3.40	9	3" R-RFP-C
EP-6	5th Ave.	3" x 2.57	7	3" R-RFP-C
EP-7	6th Ave.	3" x 2.82	8	3" R-RFP-C
EP-8	7th Ave.	3" x 2.51	8	3" R-RFP-C

GRILLES AND REGISTERS

DRAWING SYMBOL	SR-1	SR-2	ER-1	ER-2	ER-3	ER-4	ER-5	TE-1
MANUFACTURER	GMA	GMA	GMR	GMR	GMR	GMR	GMR	GMR
MODEL	24/4	107	107	107	107	107	107	107
SIZE	24/4	107	107	107	107	107	107	107
GASKET	YES	YES	YES	YES	YES	YES	YES	YES
MATERIAL & FINISH	FLAT GRAY BAKER ENAMEL PRIME COAT	FLAT GRAY BAKER ENAMEL PRIME COAT	FLAT GRAY BAKER ENAMEL PRIME COAT	FLAT GRAY BAKER ENAMEL PRIME COAT	FLAT GRAY BAKER ENAMEL PRIME COAT	FLAT GRAY BAKER ENAMEL PRIME COAT	FLAT GRAY BAKER ENAMEL PRIME COAT	FLAT GRAY BAKER ENAMEL PRIME COAT
OTHER ACCESSORIES								O. B. DAMPER

DIFFUSER

DRAWING SYMBOL	CO-1	CO-2	CO-3
MANUFACTURER	BARBER	COLMAN	
MODEL	SFR	SFR	SFR
SIZE	VARIES	100	100
DISCHARGE	1W	2WC	4W
MATERIAL & FINISH	STD. GONS STEEL	STD. GONS STEEL	STD. GONS STEEL
OTHER ACCESSORIES			

AS BUILTS
 PRODUCED IN ACCORDANCE WITH CONTRACTOR
 SUBMITTED AS BUILT RECORDS AS APPROVED
 BY THE STATE OF ALASKA.

ADDENDA NO. 3
 ADDENDA NO. 2

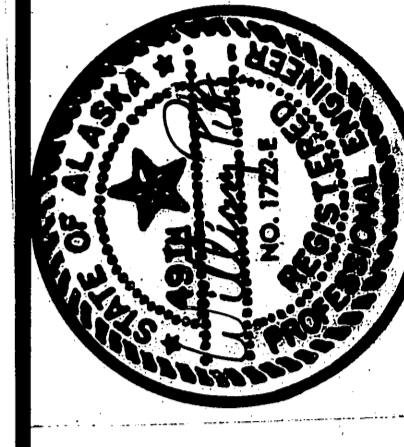
SCHEDULES

JOB NO: 7305-731
 DATE: Nov 12, 1973

ARCHITECTS - ENGINEERS - SURVEYORS
 601 COLLEGE ROAD, FAIRBANKS, ALASKA 99701, PHONE: 452-1241

STATE OF ALASKA
 DEPARTMENT OF PUBLIC WORKS
 DIVISION OF BUILDINGS

FAIRBANKS REGIONAL
 OFFICE BUILDING



M16
 SHEET NO.: OF 61

SEE PARKING LEVEL LIGHTING PLAN FOR CIRCUITING

SEE PARKING LEVEL LIGHTING PLAN FOR CIRCUITING

SEE PARKING LEVEL LIGHTING PLAN FOR CIRCUITING

SEE PARKING LEVEL LIGHTING PLAN FOR CIRCUITING

SEE PARKING LEVEL LIGHTING PLAN FOR CIRCUITING

SEE PARKING LEVEL LIGHTING PLAN FOR CIRCUITING

SEE PARKING LEVEL LIGHTING PLAN FOR CIRCUITING

SEE PARKING LEVEL LIGHTING PLAN FOR CIRCUITING

SEE PARKING LEVEL LIGHTING PLAN FOR CIRCUITING

SEE PARKING LEVEL LIGHTING PLAN FOR CIRCUITING

SEE PARKING LEVEL LIGHTING PLAN FOR CIRCUITING

SEE PARKING LEVEL LIGHTING PLAN FOR CIRCUITING

SEE PARKING LEVEL LIGHTING PLAN FOR CIRCUITING

SEE PARKING LEVEL LIGHTING PLAN FOR CIRCUITING

SEE PARKING LEVEL LIGHTING PLAN FOR CIRCUITING

SEE PARKING LEVEL LIGHTING PLAN FOR CIRCUITING

SEE PARKING LEVEL LIGHTING PLAN FOR CIRCUITING

SEE PARKING LEVEL LIGHTING PLAN FOR CIRCUITING

SEE PARKING LEVEL LIGHTING PLAN FOR CIRCUITING

SEE PARKING LEVEL LIGHTING PLAN FOR CIRCUITING

SEE PARKING LEVEL LIGHTING PLAN FOR CIRCUITING

SEE PARKING LEVEL LIGHTING PLAN FOR CIRCUITING

SEE PARKING LEVEL LIGHTING PLAN FOR CIRCUITING

SEE PARKING LEVEL LIGHTING PLAN FOR CIRCUITING

SEE PARKING LEVEL LIGHTING PLAN FOR CIRCUITING

SEE PARKING LEVEL LIGHTING PLAN FOR CIRCUITING

SEE PARKING LEVEL LIGHTING PLAN FOR CIRCUITING

SEE PARKING LEVEL LIGHTING PLAN FOR CIRCUITING

SEE PARKING LEVEL LIGHTING PLAN FOR CIRCUITING

SEE PARKING LEVEL LIGHTING PLAN FOR CIRCUITING

SEE PARKING LEVEL LIGHTING PLAN FOR CIRCUITING

SEE PARKING LEVEL LIGHTING PLAN FOR CIRCUITING

SEE PARKING LEVEL LIGHTING PLAN FOR CIRCUITING

SEE PARKING LEVEL LIGHTING PLAN FOR CIRCUITING

SEE PARKING LEVEL LIGHTING PLAN FOR CIRCUITING

SEE PARKING LEVEL LIGHTING PLAN FOR CIRCUITING

SEE PARKING LEVEL LIGHTING PLAN FOR CIRCUITING

SEE PARKING LEVEL LIGHTING PLAN FOR CIRCUITING

SEE PARKING LEVEL LIGHTING PLAN FOR CIRCUITING

SEE PARKING LEVEL LIGHTING PLAN FOR CIRCUITING

SEE PARKING LEVEL LIGHTING PLAN FOR CIRCUITING

SEE PARKING LEVEL LIGHTING PLAN FOR CIRCUITING

SEE PARKING LEVEL LIGHTING PLAN FOR CIRCUITING

SEE PARKING LEVEL LIGHTING PLAN FOR CIRCUITING

SEE PARKING LEVEL LIGHTING PLAN FOR CIRCUITING

SEE PARKING LEVEL LIGHTING PLAN FOR CIRCUITING

SEE PARKING LEVEL LIGHTING PLAN FOR CIRCUITING

SEE PARKING LEVEL LIGHTING PLAN FOR CIRCUITING

SEE PARKING LEVEL LIGHTING PLAN FOR CIRCUITING

SEE PARKING LEVEL LIGHTING PLAN FOR CIRCUITING

SEE PARKING LEVEL LIGHTING PLAN FOR CIRCUITING

SEE PARKING LEVEL LIGHTING PLAN FOR CIRCUITING

SEE PARKING LEVEL LIGHTING PLAN FOR CIRCUITING

SEE PARKING LEVEL LIGHTING PLAN FOR CIRCUITING

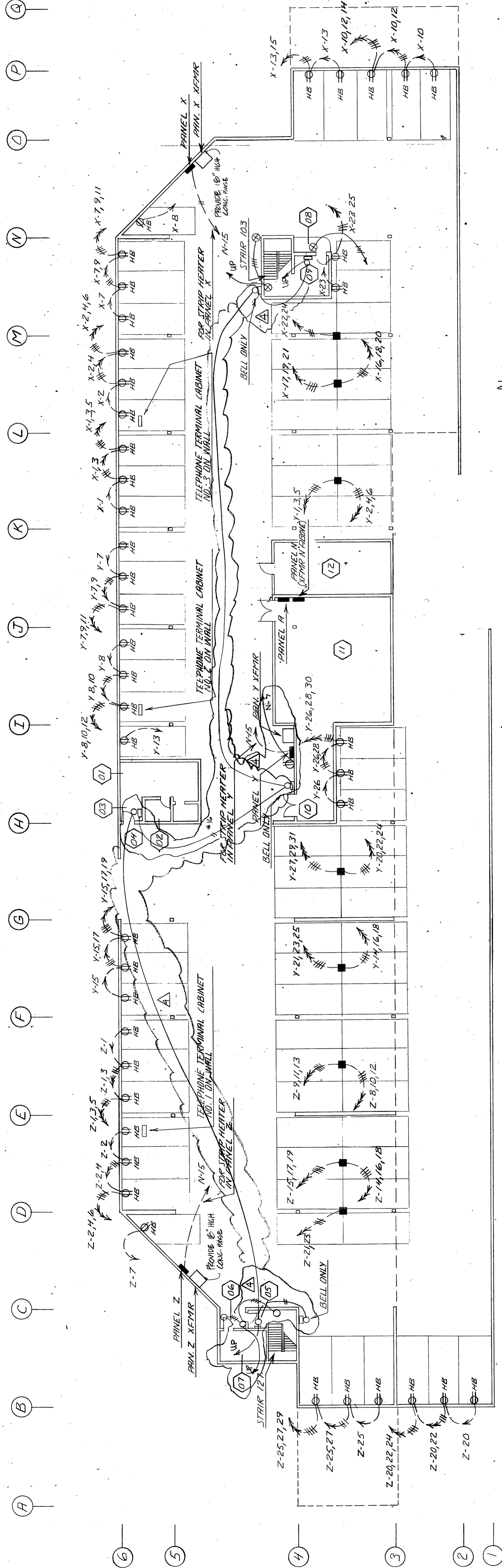
SEE PARKING LEVEL LIGHTING PLAN FOR CIRCUITING

SEE PARKING LEVEL LIGHTING PLAN FOR CIRCUITING

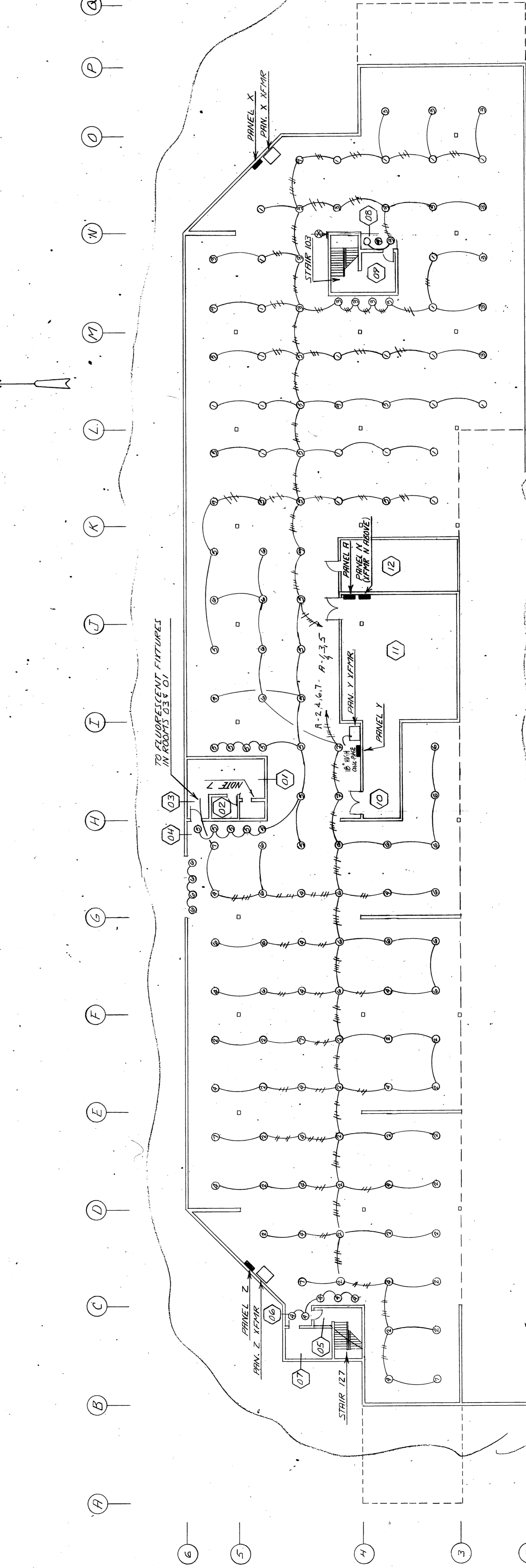
SEE PARKING LEVEL LIGHTING PLAN FOR CIRCUITING

SEE PARKING LEVEL LIGHTING PLAN FOR CIRCUITING

SEE PARKING LEVEL LIGHTING PLAN FOR CIRCUITING



PARKING LEVEL - POWER SCALE 1/16" = 1'-0"



PARKING LEVEL LIGHTING SCALE 1/16" = 1'-0"

ROOM	TIME	TYPE	DESCRIPTION	REMARKS
01	T	RECEIVED	F-100CN	
02	W	SURFACE	600/199	
03	V	RECEIVED	F-100/199	
04	P	RECEIVED	H-100/199	
05	V	RECEIVED	F-100/199	
06	P	RECEIVED	H-100/199	
07	W	SURFACE	600/199	
08	P	RECEIVED	H-100/199	
09	T	RECEIVED	F-100/199	
10	E-1	SURFACE	600/199	
11	E-1	SURFACE	600/199	
12	E-1	SURFACE	600/199	

KEY TO NUMBERS
1 - PURPLE
2 - GREEN
3 - RED
4 - BLUE
5 - YELLOW
6 - BLACK

AS BUILTS
PRODUCED IN ACCORDANCE WITH CONTRACTOR SUBMITTED AS BUILT RECORDS AS APPROVED BY THE STATE OF ALASKA.

JOB NO: 7145-1141
DATE: 06/12/1973

ARCHITECTS - ENGINEERS - SURVEYORS
601 COLLEGE ROAD, FAIRBANKS, ALASKA 99701, PHONE: 452-1241

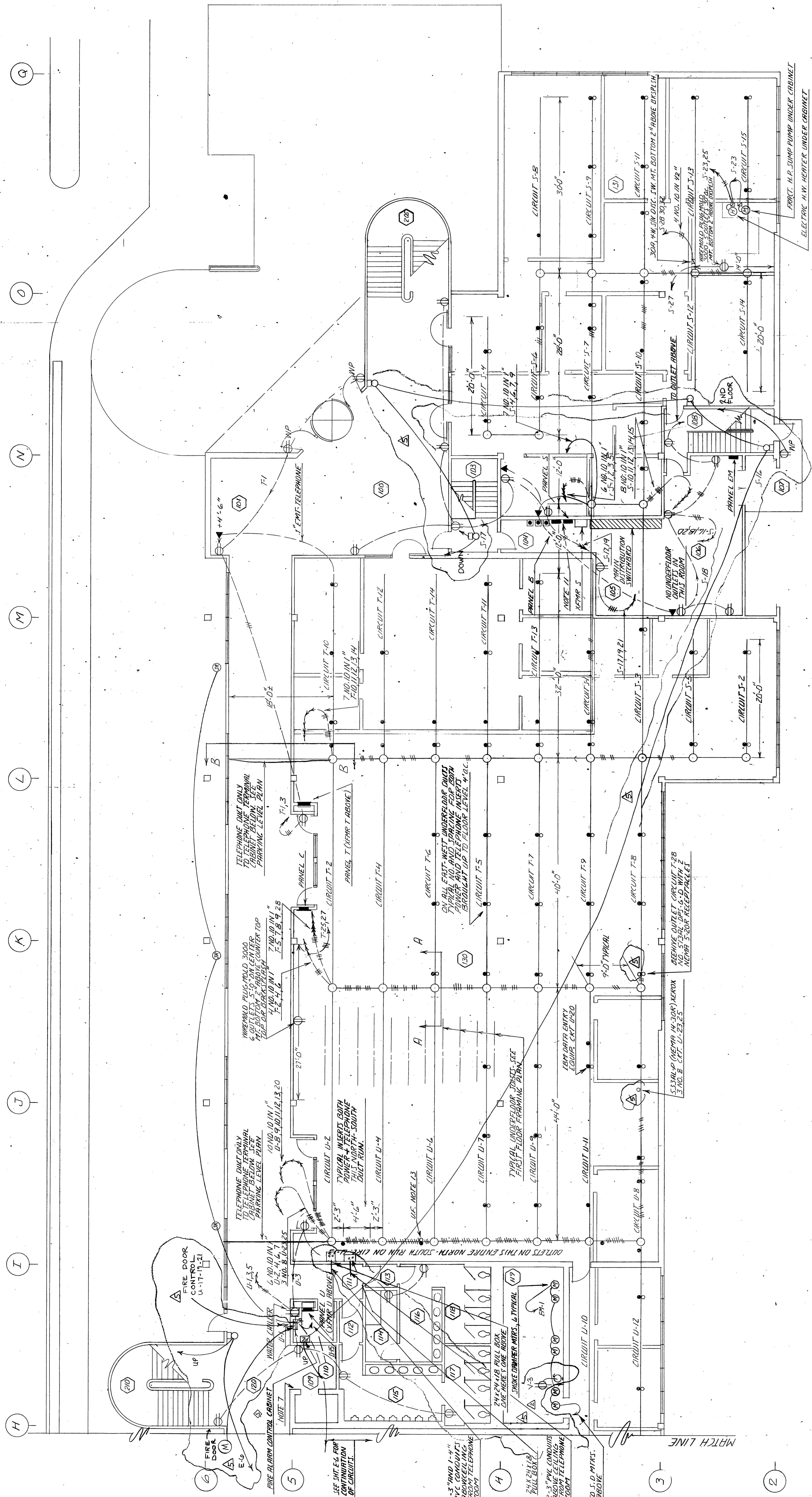
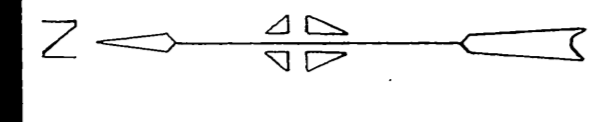
STATE OF ALASKA
DEPARTMENT OF PUBLIC WORKS
DIVISION OF BUILDINGS

PHASE TWO
WORKS

FAIRBANKS REGIONAL OFFICE BUILDING
DEA 2-0110 - BLOCK 20A - FAIRBANKS, ALASKA

E2
SHEET NO. 1 OF 61

1609
1500



PARTIAL FIRST FLOOR PLAN - POWER
SCALE 1/8" = 1'-0"

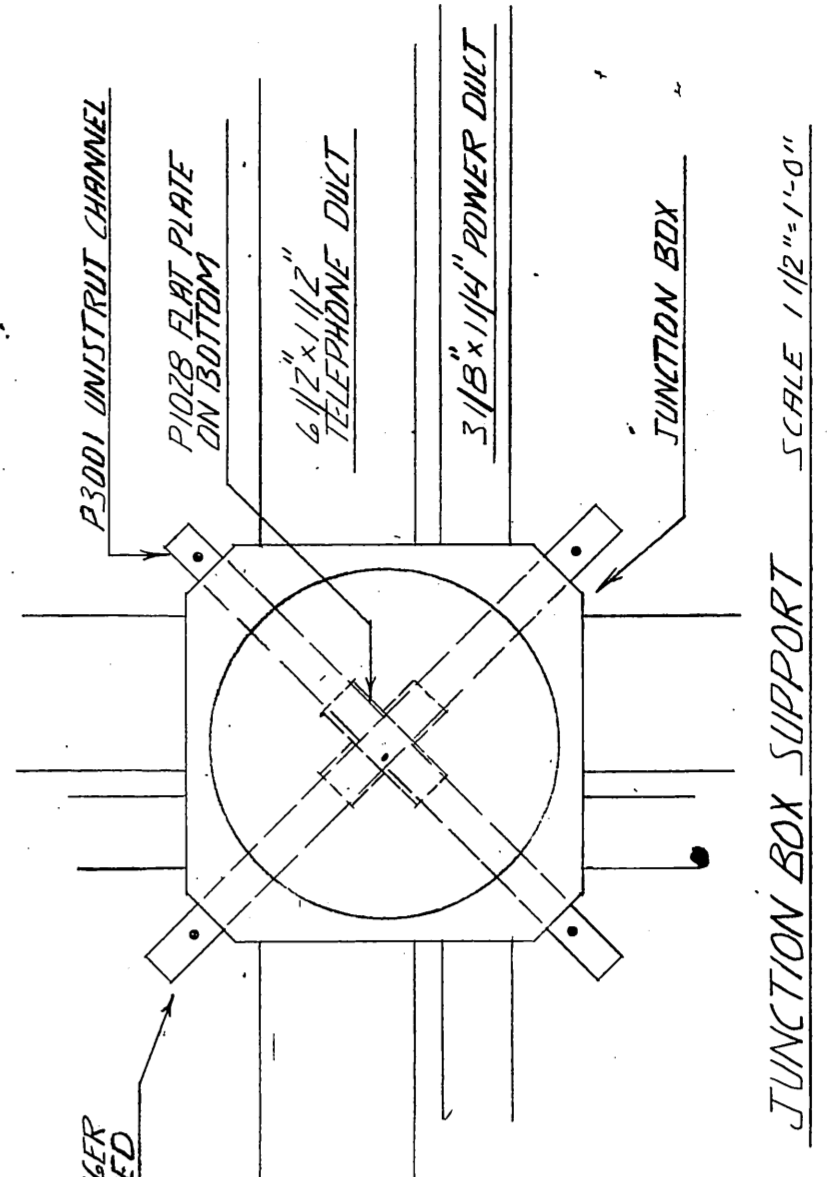
FLOOR DUCT SYMBOLS

- POWER OUTLET
- TELEPHONE OUTLET

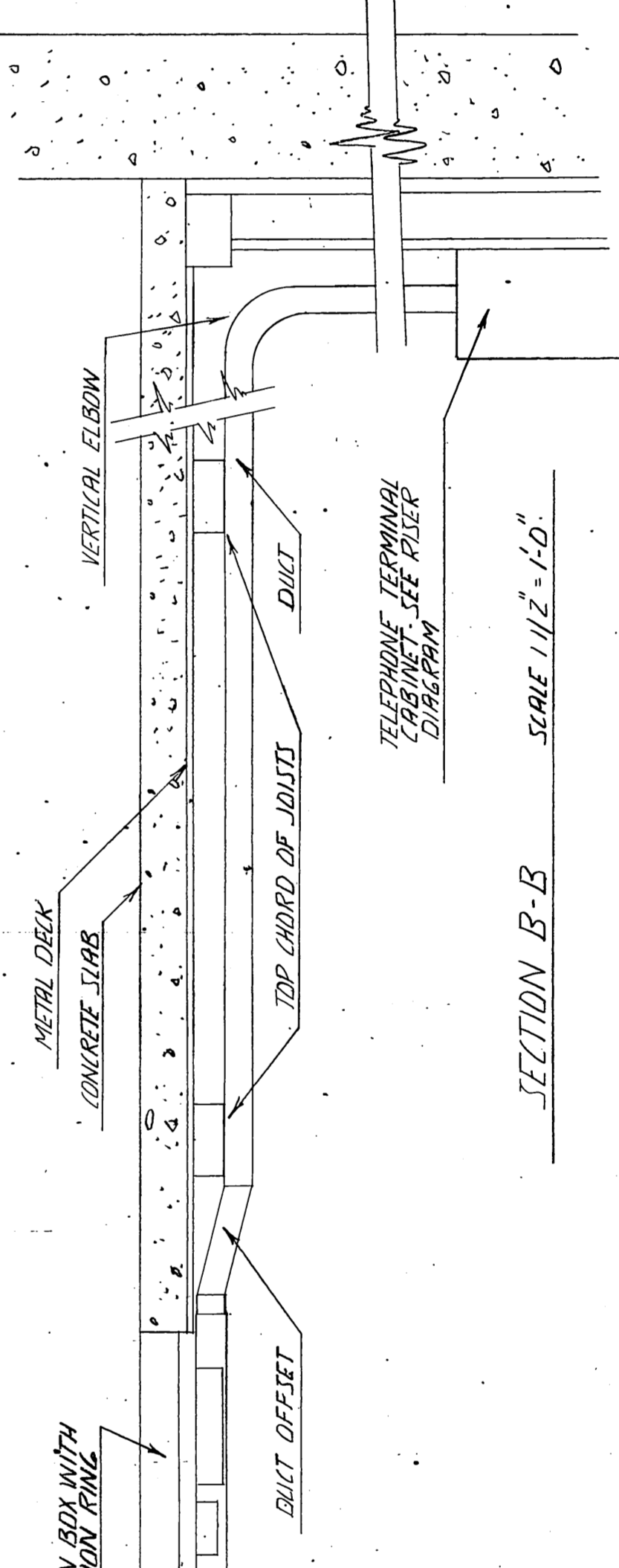
NOTE 13 CONNECTIONS FOR CONDUITS, PANELS, CIRCUITS, ETC. TO BE MADE WITH ONE EACH SILENT, IMPULSE, TYPICAL FOR POWER TELEPHONE.

NOTES ON UNDERFLOOR DUCT

1. PROVIDE CONDUIT EXCEPT FOR EACH SPINNER AND WIREMAN TO BE USED FOR ALL POWER AND TELEPHONE.
2. USE FLAT WIRE AND USE WIRELESS UNDER ALL DUCTS.
3. PROVIDE JUNCTION BOX TO UNDERFLOOR CHANNELS WITH NOT LESS THAN FOUR JOINTS IN ALL.
4. NUMBER ALL WIRE AND EQUAL PRODUCTS TO BE USED.
5. DUCT LAYOUT DIMENSIONS ARE GIVEN IN FEET AND INCHES.
6. THIS IS A SQUARE DUCT SYSTEM AND ALL DUCTS ARE TO BE LAPPED AT JOINTS AND ALL JOINTS ARE TO BE MADE WITH WIRE AND WIRELESS UNDER ALL DUCTS.
7. CONDUIT SHALL BE 1/2" OR 3/4" IN DIAMETER AND ALL JOINTS SHALL BE MADE WITH WIRE AND WIRELESS UNDER ALL DUCTS.
8. PROVIDE STRONG (GREEN) CONDUIT THROUGH ENTIRE DUCT SYSTEM.
9. PROVIDE STRONG (GREEN) CONDUIT THROUGH ENTIRE DUCT SYSTEM.
10. CONDUIT SHALL BE 1/2" OR 3/4" IN DIAMETER AND ALL JOINTS SHALL BE MADE WITH WIRE AND WIRELESS UNDER ALL DUCTS.
11. BLACK OUT FOR JUNCTION BOXES, LEAVING 1/2" TO 3/4" CLEARANCE THROUGH WALLS FOR WIREMAN TO WORK IN UNDERFLOOR.
12. DUCT IN CIRCUIT CONDUIT FOR UNDERFLOOR SHALL BE 1/2" OR 3/4" IN DIAMETER.



JUNCTION BOX SUPPORT SCALE 1/12" = 1'-0"



SECTION B-B SCALE 1/12" = 1'-0"

UNDERFLOOR DUCT DETAILS

AS-BUILTS
PRODUCED IN ACCORDANCE WITH CONTRACTOR SUBMITTED AS BUILT RECORDS AS APPROVED BY THE STATE OF ALASKA.

DRAWING REFLECTS CHANGES MADE BY ADDENDUMS 2/25/74

FIRST FLOOR PLAN EAST - POWER AND TELEPHONE

REVISION NO. 2 - ADDED TELEPHONE CONDUIT AND BULL GOVES IN ROOM 119 3/28/75
REVISION NO. 1 - ADDED POWER AND TELEPHONE FLOOR OUTLET AND NEW PARTITION LAYOUT 2/17/75

AS-BUILT DRAWING 6/12/75

ARCHITECTS - ENGINEERS - SURVEYORS
601 COLLEGE ROAD, FAIRBANKS, ALASKA 99701, PHONE: 452-1241

STATE OF ALASKA
DEPARTMENT OF PUBLIC WORKS
DIVISION OF BUILDINGS

FAIRBANKS REGIONAL
OFFICE BUILDING



SHEET NO. 1 OF 4
E6