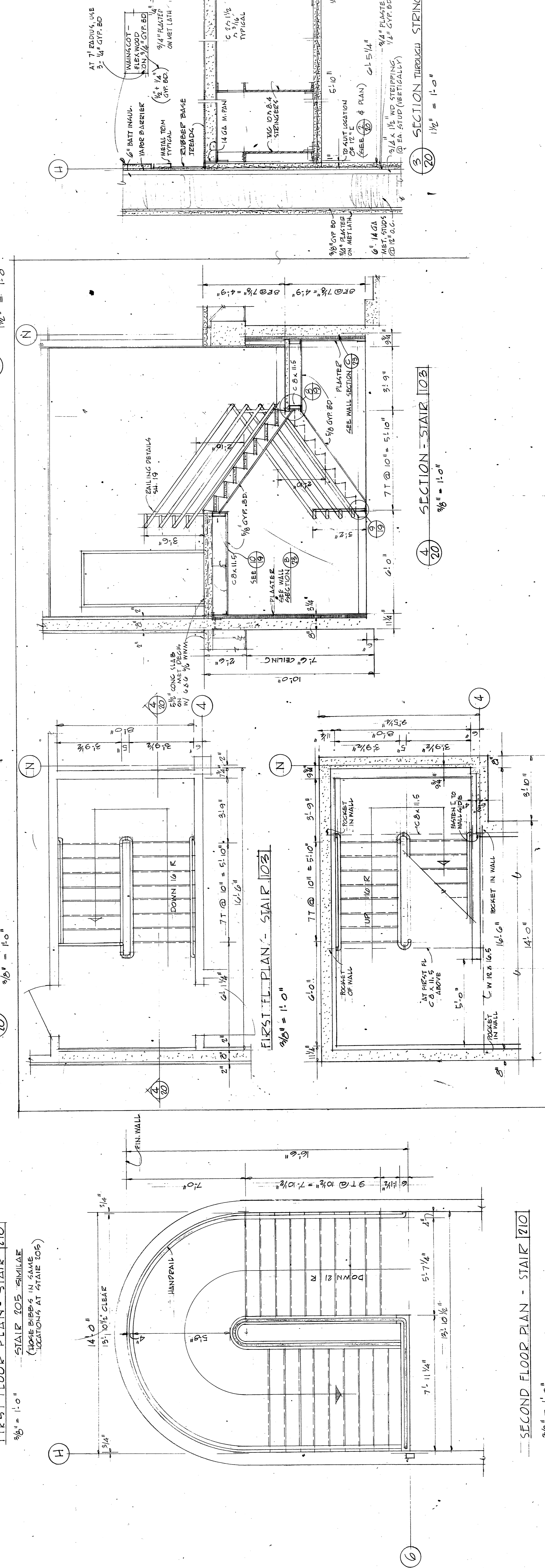
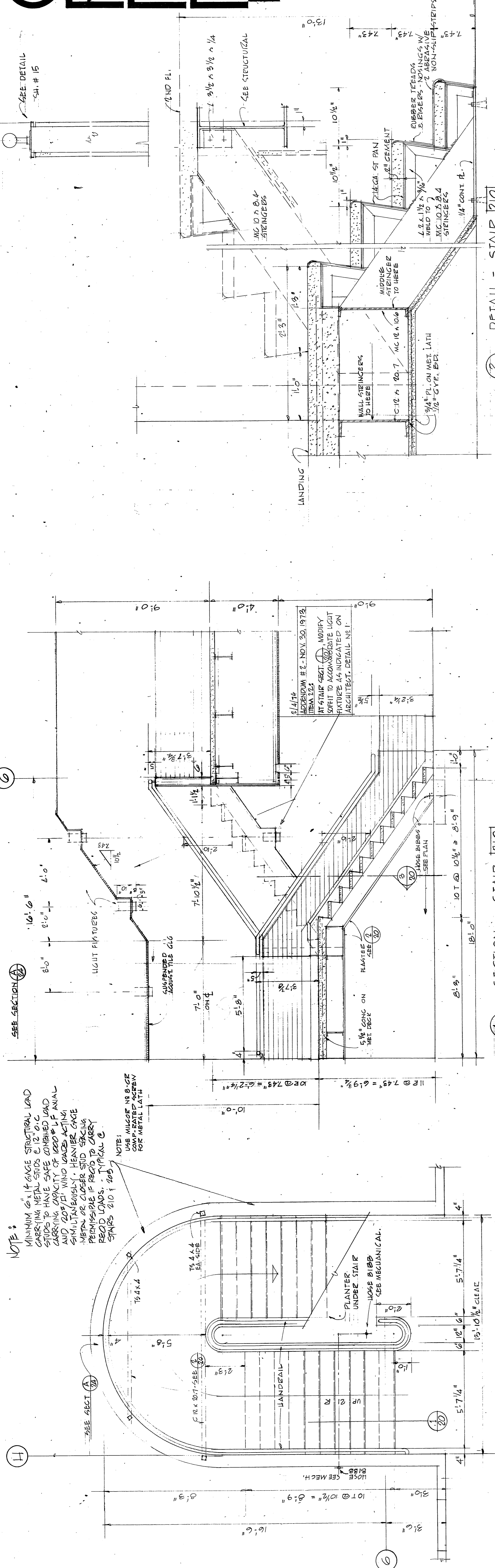


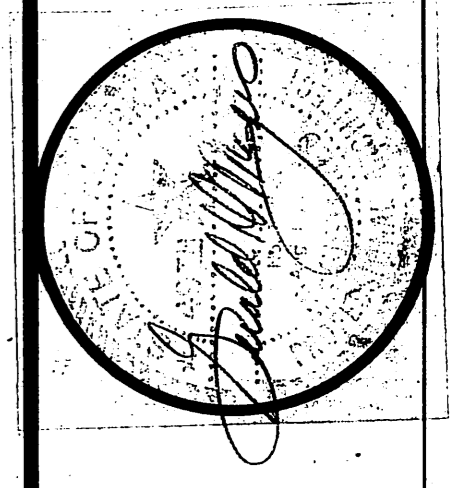
DOOR SCHEDULE

NUMBER	SIZE	TYPE	FRAME	WVR. SIZE	WVR. LABEL	FINISH	WVR. COLOR	HEAD	WVR. SILL	DETAILS	HARDWARE TYPE	GLASS REQ. NO.	REMARKS
02	3'-0" X 7'-0" X 1/2"	E	H.M.	1 HE.	PAINT	2/1B	2/1B	2/1B	2/1B	1	1		
03	3'-0" X 7'-0" X 1/2"			3 HE.		4/1B	4/1B	4/1B	4/1B	2	2		Thermal Insulating Core
04						13/1B	13/1B	13/1B	13/1B	3	3		
05						13/1B	13/1B	13/1B	13/1B	4	4		
06						13/1B	13/1B	13/1B	13/1B	5	5		
07						13/1B	13/1B	13/1B	13/1B	6	6		
08						13/1B	13/1B	13/1B	13/1B	7	7		
09						13/1B	13/1B	13/1B	13/1B	8	8		
10						13/1B	13/1B	13/1B	13/1B	9	9		
11						13/1B	13/1B	13/1B	13/1B	10	10		
12						13/1B	13/1B	13/1B	13/1B	11	11		
13						13/1B	13/1B	13/1B	13/1B	12	12		
14						13/1B	13/1B	13/1B	13/1B	13	13		
15						13/1B	13/1B	13/1B	13/1B	14	14		
16						13/1B	13/1B	13/1B	13/1B	15	15		
17						13/1B	13/1B	13/1B	13/1B	16	16		
18						13/1B	13/1B	13/1B	13/1B	17	17		
19						13/1B	13/1B	13/1B	13/1B	18	18		
20						13/1B	13/1B	13/1B	13/1B	19	19		
21						13/1B	13/1B	13/1B	13/1B	20	20		
22						13/1B	13/1B	13/1B	13/1B	21	21		
23						13/1B	13/1B	13/1B	13/1B	22	22		
24						13/1B	13/1B	13/1B	13/1B	23	23		
25						13/1B	13/1B	13/1B	13/1B	24	24		
26						13/1B	13/1B	13/1B	13/1B	25	25		
27						13/1B	13/1B	13/1B	13/1B	26	26		
28						13/1B	13/1B	13/1B	13/1B	27	27		
29						13/1B	13/1B	13/1B	13/1B	28	28		
30						13/1B	13/1B	13/1B	13/1B	29	29		
31						13/1B	13/1B	13/1B	13/1B	30	30		
32						13/1B	13/1B	13/1B	13/1B	31	31		
33						13/1B	13/1B	13/1B	13/1B	32	32		
34						13/1B	13/1B	13/1B	13/1B	33	33		
35						13/1B	13/1B	13/1B	13/1B	34	34		
36						13/1B	13/1B	13/1B	13/1B	35	35		
37						13/1B	13/1B	13/1B	13/1B	36	36		
38						13/1B	13/1B	13/1B	13/1B	37	37		
39						13/1B	13/1B	13/1B	13/1B	38	38		
40						13/1B	13/1B	13/1B	13/1B	39	39		
41						13/1B	13/1B	13/1B	13/1B	40	40		
42						13/1B	13/1B	13/1B	13/1B	41	41		
43						13/1B	13/1B	13/1B	13/1B	42	42		
44						13/1B	13/1B	13/1B	13/1B	43	43		
45						13/1B	13/1B	13/1B	13/1B	44	44		
46						13/1B	13/1B	13/1B	13/1B	45	45		
47						13/1B	13/1B	13/1B	13/1B	46	46		
48						13/1B	13/1B	13/1B	13/1B	47	47		
49						13/1B	13/1B	13/1B	13/1B	48	48		
50						13/1B	13/1B	13/1B	13/1B	49	49		
51						13/1B	13/1B	13/1B	13/1B	50	50		
52						13/1B	13/1B	13/1B	13/1B	51	51		
53						13/1B	13/1B	13/1B	13/1B	52	52		
54						13/1B	13/1B	13/1B	13/1B	53	53		
55						13/1B	13/1B	13/1B	13/1B	54	54		
56						13/1B	13/1B	13/1B	13/1B	55	55		
57						13/1B	13/1B	13/1B	13/1B	56	56		
58						13/1B	13/1B	13/1B	13/1B	57	57		
59						13/1B	13/1B	13/1B	13/1B	58	58		
60						13/1B	13/1B	13/1B	13/1B	59	59		
61						13/1B	13/1B	13/1B	13/1B	60	60		
62						13/1B	13/1B	13/1B	13/1B	61	61		
63						13/1B	13/1B	13/1B	13/1B	62	62		
64						13/1B	13/1B	13/1B	13/1B	63	63		
65						13/1B	13/1B	13/1B	13/1B	64	64		
66						13/1B	13/1B	13/1B	13/1B	65	65		
67						13/1B	13/1B	13/1B	13/1B	66	66		
68						13/1B	13/1B	13/1B	13/1B	67	67		
69						13/1B	13/1B	13/1B	13/1B	68	68		
70						13/1B	13/1B	13/1B	13/1B	69	69		
71						13/1B	13/1B	13/1B	13/1B	70	70		
72						13/1B	13/1B	13/1B	13/1B	71	71		
73						13/1B	13/1B	13/1B	13/1B	72	72		
74						13/1B	13/1B	13/1B	13/1B	73	73		
75						13/1B	13/1B	13/1B	13/1B	74	74		
76						13/1B	13/1B	13/1B	13/1B	75	75		
77						13/1B	13/1B	13/1B	13/1B	76	76		
78						13/1B	13/1B	13/1B	13/1B	77	77		
79						13/1B	13/1B	13/1B	13/1B	78	78		
80						13/1B	13/1B	13/1B	13/1B	79	79		
81						13/1B	13/1B	13/1B	13/1B	80	80		
82						13/1B	13/1B	13/1B	13/1B	81	81		
83						13/1B	13/1B	13/1B	13/1B	82	82		
84						13/1B	13/1B	13/1B	13/1B	83	83		
85						13/1B	13/1B	13/1B	13/1B	84	84		
86						13/1B	13/1B	13/1B	13/1B	85	85		
87						13/1B	13/1B	13/1B	13/1B	86	86		
88						13/1B	13/1B	13/1B	13/1B	87	87		
89						13/1B	13/1B	13/1B	13/1B	88	88		
90						13/1B	13/1B	13/1B	13/1B	89	89		
91						13/1B	13/1B	13/1B	13/1B	90	90		
92						13/1B	13/1B	13/1B	13/1B	91	91		
93						13/1B	13/1B	13/1B	13/1B	92	92		
94						13/1B	13/1B	13/1B	13/1B	93	93		
95						13/1B	13/1B	13/1B	13/1B	94	94		
96						13/1B	13/1B	13/1B	13/1B	95	95		
97						13/1B	13/1B	13/1B	13/1B	96	96		
98						13/1B	13/1B	13/1B	13/1B	97	97		
99						13/1B	13/1B	13/1B	13/1B	98	98		
100						13/1B	13/1B	13/1B	13/1B	99	99		
101						13/1B	13/1B	13/1B	13/1B	100	100		
102						13/1B	13/1B	13/1B	13/1B	101	101		
103						13/1B	13/1B	13/1B	13/1B	102	102		
104						13/1B	13/1B	13/1B	13/1B	103	103		
105						13/1B	13/1B	13/1B	13/1B	104	104		
106						13/1B	13/1B	13/1B	13/1B	105	105		
107						13/1B	13/1B	13/1B	13/1B	106	106		
108						13/1B	13/1B	13/1B	13/1B	107	107		
109						13/1B	13/1B	13/1B	13/1B	108	108		
110						13/1B	13/1B	13/1B	13/1B	109	109		
111						13/1B	13/1B	13/1B	13/1B	110	110		
112						13/1B	13/1B	13/1B	13/1B	111	111		
113						13/1B	13/1B	13/1B	13/1B	112	112		
114						13/1B	13/1B	13/1B	13/1B	113	113		
115						13/1B	13/1B	13/1B	13/1B	114	114		
116						13/1B	13/1B	13/1B	13/1B	115	115		
117						13/1B	13/1B	13/1B	13/1B	116	116		
118						13/1B	13/1B	13/1B	13/1B	117	117		
119						13/1B	13/1B	13/1B	13/1B	118	118		
120						13/1B	13/1B	13/1B	13/1B	119	119		
121						13/1B	13/1B	13/1B	13/1B	120	120		
122						13/1B	13/1B	13/1B	13/1B	121	121		
123						13/1B	13/1B	13/1B	13/1B	122	122		
124						13/1B	13/1B	13/1B	13/1B	123	123		
125						13/1B	13/1B	13/1B	13/1B	124	124		
126						13/1B	13/1B	13/1B	13/1B	125	125		
127						13/1B	13/1B	13/1B	13/1B	126	126		
128						13/1B	13/1B	13/1B	13/1B	127	127		
129						13/1B	13/1B	13/1B	13/1B	128	128		
130													



AS BUILTS
 PRODUCED IN ACCORDANCE WITH CONTRACTOR
 SUBMITTED AS BUILT RECORDS AS APPROVED
 BY THE STATE OF ALASKA.

STAIR 103, 203, 210 & DETAILS

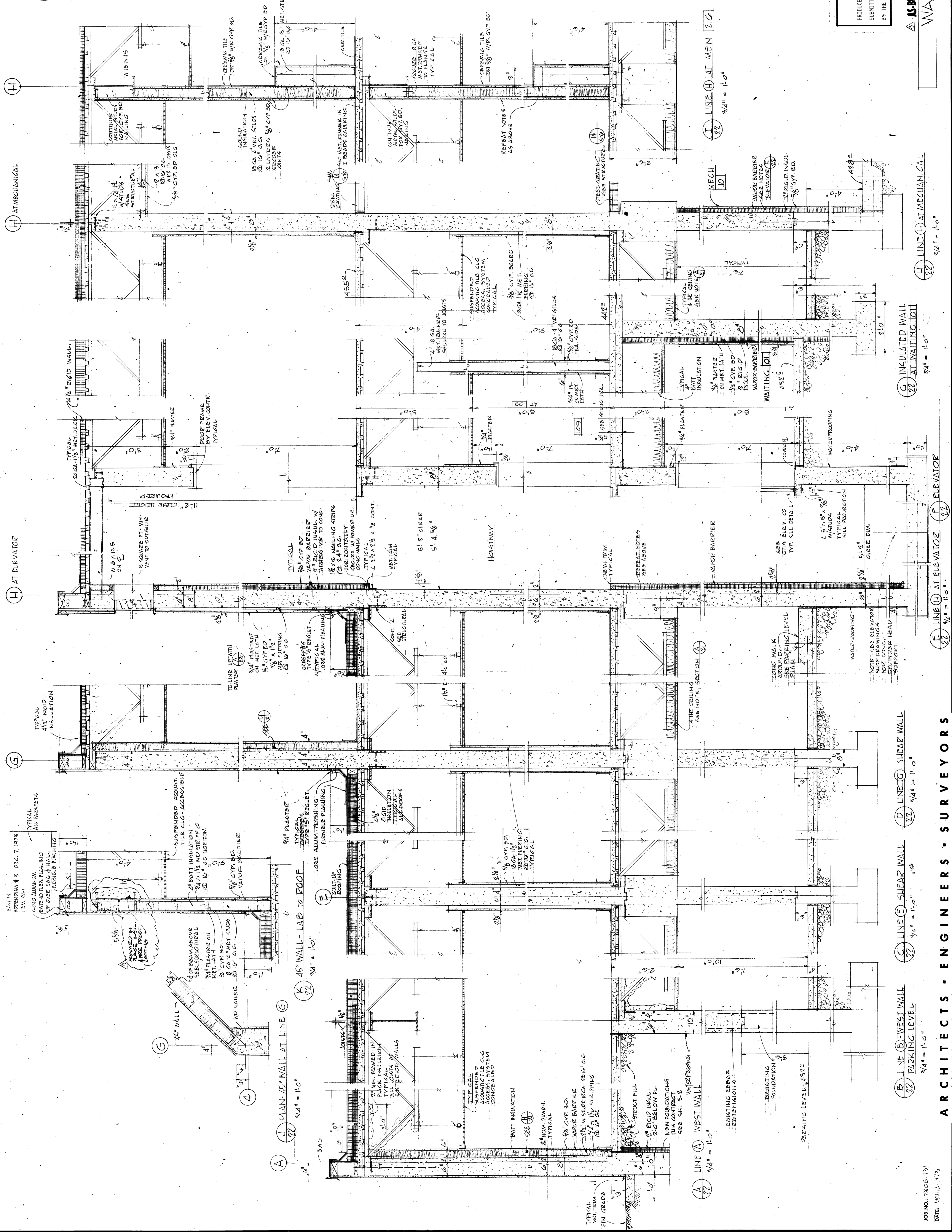


FAIRBANKS REGIONAL OFFICE BUILDING
 DSA 2-010-BLOCK CSA - FAIRBANKS, ALASKA

STATE OF ALASKA DEPARTMENT OF PUBLIC WORKS PHASE TWO DIVISION OF BUILDINGS

ARCHITECTS - ENGINEERS - SURVEYORS
 601 COLLEGE ROAD, FAIRBANKS, ALASKA 99701, PHONE: 452-1241

JOB NO: 7857-701
 DATE: 09.12.1973



AS BUILTS
 PRODUCED IN ACCORDANCE WITH CONTRACTOR
 SUBMITTED AS BUILT RECORDS AS APPROVED
 BY THE STATE OF ALASKA.

AS-BUILT DRAWING 7/8/75
 WALL SECTIONS

ARCHITECTS - ENGINEERS - SURVEYORS
 601 COLLEGE ROAD, FAIRBANKS, ALASKA 99701, PHONE: 452-1241

STATE OF ALASKA
 DEPARTMENT OF PUBLIC WORKS
 DIVISION OF BUILDINGS

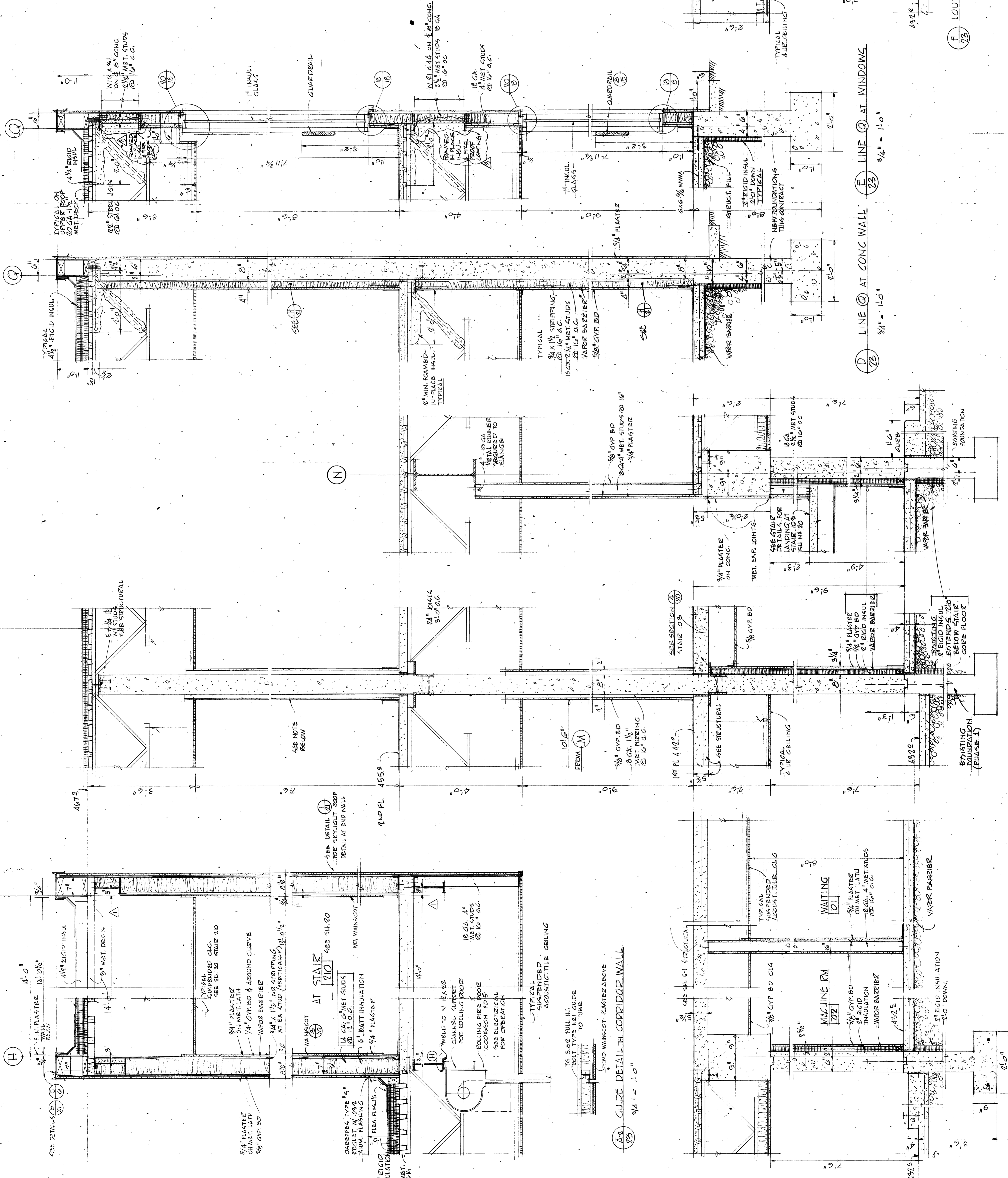
FAIRBANKS REGIONAL
 OFFICE BUILDING
 AREA 2 - CIVIL BLOCK 222A - FAIRBANKS, ALASKA



222
 SHEET NO. OF 61

JOB NO: 7805-791
 DATE: 10/12/73

69



A LINE @ MACHINE RM & STAIR 210
 3/4" = 1'-0"

B SHEAR WALL AT STAIR 103
 3/4" = 1'-0"

C LINE @ STAIR 103
 3/4" = 1'-0"

D LINE @ CONC WALL
 3/4" = 1'-0"

E LINE @ AT WINDOWS
 3/4" = 1'-0"

F LOUVERES ON EXTERIOR WALL
 LOUVER ENCLOSED MECHANICAL 112
 3/4" = 1'-0"

PREVISION 8/1/74
 DIMENSION CHANGES 14'S TO F BEAMS
 FROM COLUMN 4
 AS BUILT DRAWING - 8/18/75

WALL SECTIONS

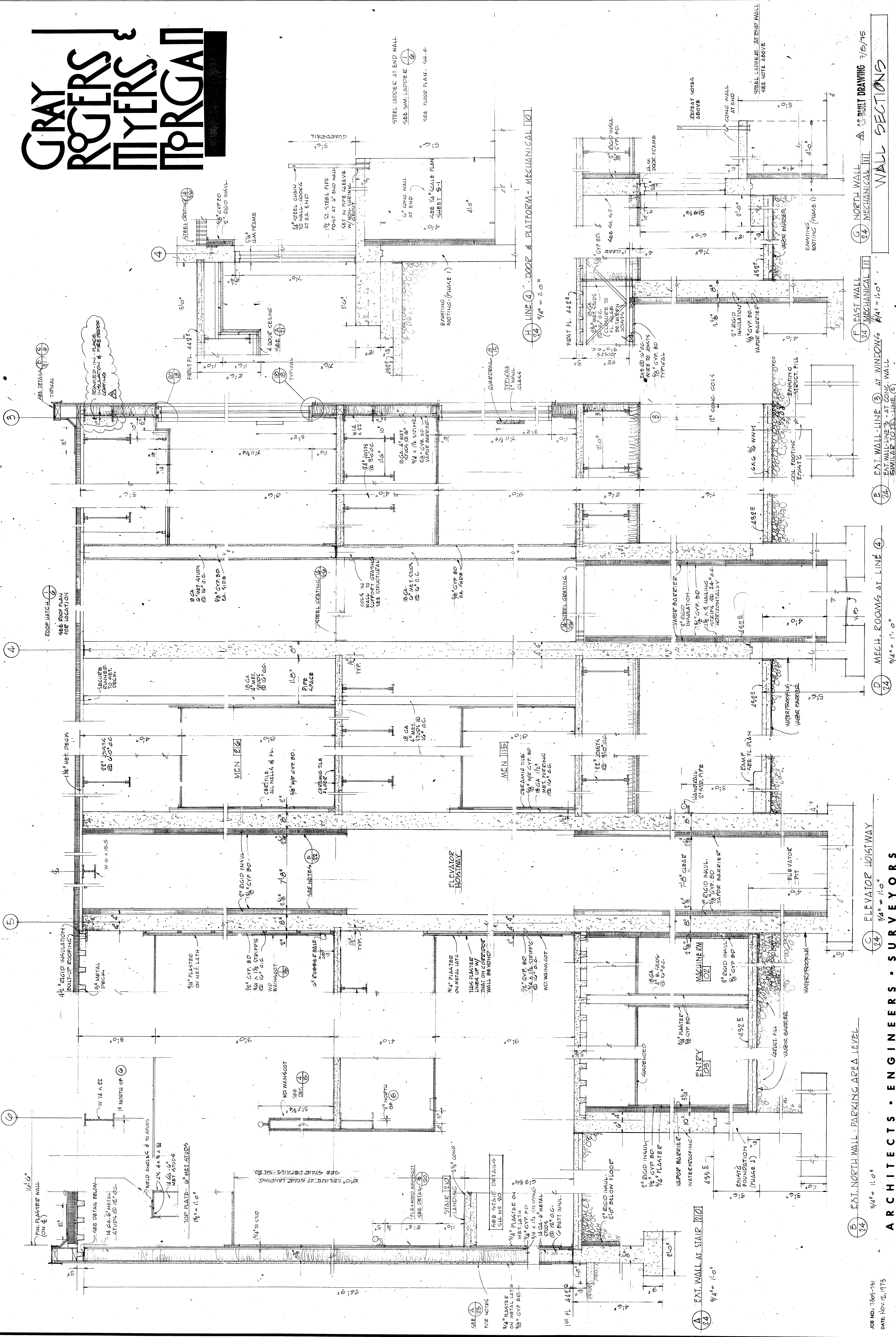
ARCHITECTS - ENGINEERS - SURVEYORS
 601 COLLEGE ROAD, FAIRBANKS, ALASKA 99701, PHONE: 452-1241

AS BUILTS
 PRODUCED IN ACCORDANCE WITH CONTRACTOR
 SUBMITTED AS BUILT RECORDS AS APPROVED
 BY THE STATE OF ALASKA

STATE OF ALASKA
 DEPARTMENT OF PUBLIC WORKS
 DIVISION OF BUILDINGS

FAIRBANKS REGIONAL
 OFFICE BUILDING
 DEA 8-0110 - BLOCK 22A - FAIRBANKS, ALASKA





SECTION A EXT. WALL AT STAIR 10'0" 9/4" = 1/4" = 11.0"
SECTION B EXT. NORTH WALL - PARKING AREA LEVEL 10'0" 9/4" = 1/4" = 11.0"
SECTION C ELEVATOR HOISTWAY 10'0" 9/4" = 1/4" = 11.0"
SECTION D MECH. ROOMS AT LINE 10'0" 9/4" = 1/4" = 11.0"
SECTION E EXT. WALL-LINE 3 AT WINDOWS 10'0" 9/4" = 1/4" = 11.0"
SECTION F EAST WALL 10'0" 9/4" = 1/4" = 11.0"
SECTION G NORTH WALL 10'0" 9/4" = 1/4" = 11.0"
SECTION H LINE 4 - DOOR & PLATFORM - MECHANICAL 10'0" 9/4" = 1/4" = 11.0"

ARCHITECTS - ENGINEERS - SURVEYORS
 601 COLLEGE ROAD, FAIRBANKS, ALASKA 99701, PHONE: 452-1241

ASBUILTS
 PRODUCED IN ACCORDANCE WITH THE ACTOR
 SUBMITTED AS BUILT RECORDS AS APPROVED
 BY THE STATE OF ALASKA

STATE OF ALASKA
DEPARTMENT OF PUBLIC WORKS
DIVISION OF BUILDINGS

FAIRBANKS REGIONAL OFFICE BUILDING
 601 COLLEGE ROAD, FAIRBANKS, ALASKA



JOB NO. 7265-131
 DATE: NOV. 12, 1975

100

SIGNAGE SCHEDULE

IMPORTANT NOTES:

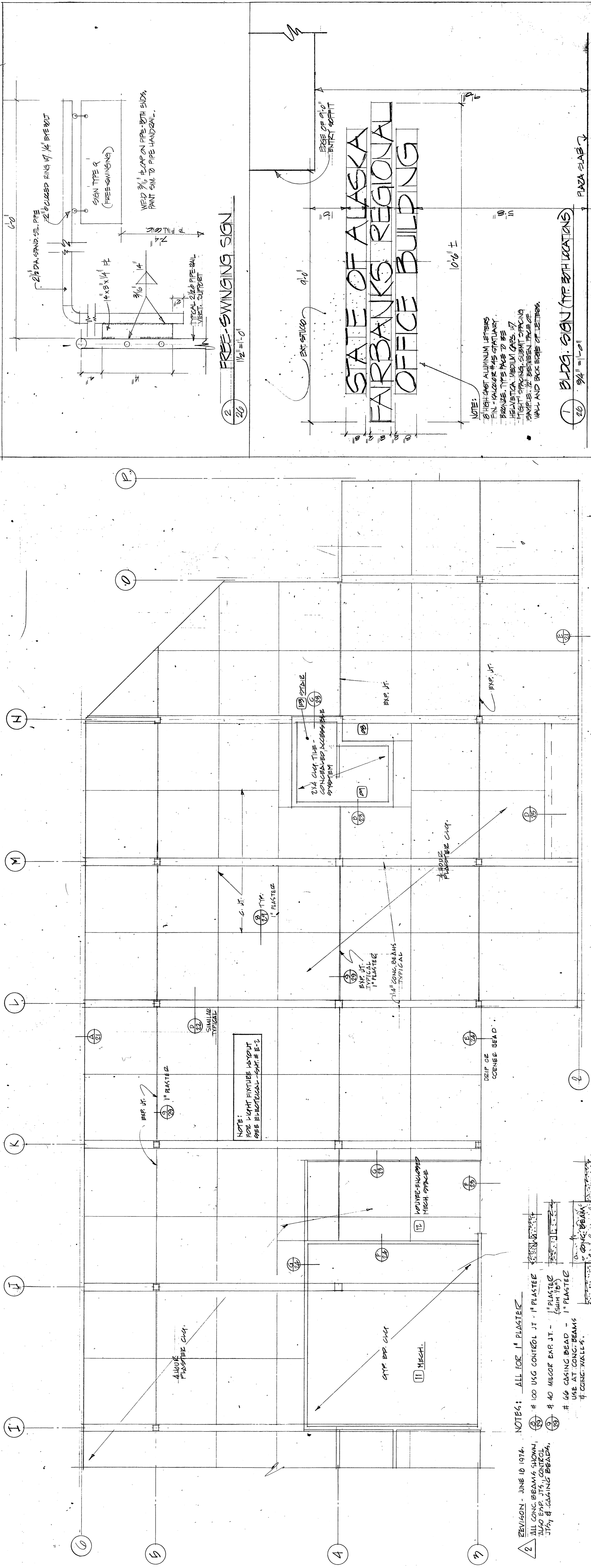
1. ALL ORDER NOS. BY VENDOR INDUSTRIES.
2. ALL TYPE STYLE TO BE HELMETICA HD. BY TIGHT SPACING. SUBMIT SAMPLES.
3. CARDS & UNDER CASES AS INDICATED ON SCHEDULE.
4. ALL ORDER PLACES TO HAVE SQUARE CORNERS.
5. SUBMIT SCALE DRAWINGS OF ALL SIGNS TO ARCHITECT FOR REVIEW.

SIGN MARK	QTY	DESCRIPTION	MOUNTING	REMARKS
A.	2	Men Women	LIQUID ADHESIVE ON ONE SIDE INTERIOR	
B.	2	Mail Vending Telephone	PAINT TYPE ON WORD SIDE INTERIOR	
C.	2	Parking Level	SEE MOUNT. DET.	
D.	11	A	SEE MOUNT. DET.	
E.	2	Conference	LIQUID ADHESIVE ON ONE SIDE INTERIOR	

SIGN MARK	QTY	DESCRIPTION	MOUNTING	REMARKS
F.	2	PUBLIC NOTICES	LIQUID ADHESIVE ON ONE SIDE INTERIOR	
G.	4	MEN WOMEN	PAINT TYPE ON WORD SIDE INTERIOR	
H.	1	RECEIVING MAINTENANCE	SEE MOUNT. DET.	
I.	1	RECEIVING MAINTENANCE	SEE MOUNT. DET.	
J.	3	ONE WAY	LIQUID ADHESIVE ON ONE SIDE INTERIOR	

SIGN MARK	QTY	DESCRIPTION	MOUNTING	REMARKS
K.	1	Garage Entry	LIQUID ADHESIVE ON ONE SIDE INTERIOR	
L.	1	Garage Exit	SAME AS ABOVE	
M.	1	CAUTION PROTECTIANS	LIQUID ADHESIVE ON ONE SIDE INTERIOR	
N.	1	EXIT	LIQUID ADHESIVE ON ONE SIDE INTERIOR	
O.	3	ONE WAY	LIQUID ADHESIVE ON ONE SIDE INTERIOR	

SIGN MARK	QTY	DESCRIPTION	MOUNTING	REMARKS
P.	1	EXIT	LIQUID ADHESIVE ON ONE SIDE INTERIOR	
Q.	1	CLEARANCE	SEE MOUNT. DET.	
R.	1	EXIT	LIQUID ADHESIVE ON ONE SIDE INTERIOR	
S.	1	STANDARD ALUM. SIGN	LIQUID ADHESIVE ON ONE SIDE INTERIOR	



AS BUILTS
 PRODUCED IN ACCORDANCE WITH CONTRACTOR SUBMITTED AS BUILT RECORDS AS APPROVED BY THE STATE OF ALASKA

REVISIONS - JUNE 10 1974.
 1. ALL CONC. BEAMS & SLOANS, ALSO EXP. JTS, CONTROL JTS, & CASING BEADS, USE AT CONC. BEAMS & CONC. WALLS.
 2. # 40 CONC. BEAM CONTROL JT. - 1" PLASTIC (SUM 100)
 3. # 40 CONC. BEAM CONTROL JT. - 1" PLASTIC (SUM 100)
 4. # 40 CONC. BEAM CONTROL JT. - 1" PLASTIC (SUM 100)
 5. # 40 CONC. BEAM CONTROL JT. - 1" PLASTIC (SUM 100)
 6. # 40 CONC. BEAM CONTROL JT. - 1" PLASTIC (SUM 100)
 7. # 40 CONC. BEAM CONTROL JT. - 1" PLASTIC (SUM 100)
 8. # 40 CONC. BEAM CONTROL JT. - 1" PLASTIC (SUM 100)
 9. # 40 CONC. BEAM CONTROL JT. - 1" PLASTIC (SUM 100)
 10. # 40 CONC. BEAM CONTROL JT. - 1" PLASTIC (SUM 100)
 11. # 40 CONC. BEAM CONTROL JT. - 1" PLASTIC (SUM 100)
 12. # 40 CONC. BEAM CONTROL JT. - 1" PLASTIC (SUM 100)
 13. # 40 CONC. BEAM CONTROL JT. - 1" PLASTIC (SUM 100)
 14. # 40 CONC. BEAM CONTROL JT. - 1" PLASTIC (SUM 100)
 15. # 40 CONC. BEAM CONTROL JT. - 1" PLASTIC (SUM 100)
 16. # 40 CONC. BEAM CONTROL JT. - 1" PLASTIC (SUM 100)
 17. # 40 CONC. BEAM CONTROL JT. - 1" PLASTIC (SUM 100)
 18. # 40 CONC. BEAM CONTROL JT. - 1" PLASTIC (SUM 100)
 19. # 40 CONC. BEAM CONTROL JT. - 1" PLASTIC (SUM 100)
 20. # 40 CONC. BEAM CONTROL JT. - 1" PLASTIC (SUM 100)
 21. # 40 CONC. BEAM CONTROL JT. - 1" PLASTIC (SUM 100)
 22. # 40 CONC. BEAM CONTROL JT. - 1" PLASTIC (SUM 100)
 23. # 40 CONC. BEAM CONTROL JT. - 1" PLASTIC (SUM 100)
 24. # 40 CONC. BEAM CONTROL JT. - 1" PLASTIC (SUM 100)
 25. # 40 CONC. BEAM CONTROL JT. - 1" PLASTIC (SUM 100)
 26. # 40 CONC. BEAM CONTROL JT. - 1" PLASTIC (SUM 100)
 27. # 40 CONC. BEAM CONTROL JT. - 1" PLASTIC (SUM 100)
 28. # 40 CONC. BEAM CONTROL JT. - 1" PLASTIC (SUM 100)
 29. # 40 CONC. BEAM CONTROL JT. - 1" PLASTIC (SUM 100)
 30. # 40 CONC. BEAM CONTROL JT. - 1" PLASTIC (SUM 100)
 31. # 40 CONC. BEAM CONTROL JT. - 1" PLASTIC (SUM 100)
 32. # 40 CONC. BEAM CONTROL JT. - 1" PLASTIC (SUM 100)
 33. # 40 CONC. BEAM CONTROL JT. - 1" PLASTIC (SUM 100)
 34. # 40 CONC. BEAM CONTROL JT. - 1" PLASTIC (SUM 100)
 35. # 40 CONC. BEAM CONTROL JT. - 1" PLASTIC (SUM 100)
 36. # 40 CONC. BEAM CONTROL JT. - 1" PLASTIC (SUM 100)
 37. # 40 CONC. BEAM CONTROL JT. - 1" PLASTIC (SUM 100)
 38. # 40 CONC. BEAM CONTROL JT. - 1" PLASTIC (SUM 100)
 39. # 40 CONC. BEAM CONTROL JT. - 1" PLASTIC (SUM 100)
 40. # 40 CONC. BEAM CONTROL JT. - 1" PLASTIC (SUM 100)
 41. # 40 CONC. BEAM CONTROL JT. - 1" PLASTIC (SUM 100)
 42. # 40 CONC. BEAM CONTROL JT. - 1" PLASTIC (SUM 100)
 43. # 40 CONC. BEAM CONTROL JT. - 1" PLASTIC (SUM 100)
 44. # 40 CONC. BEAM CONTROL JT. - 1" PLASTIC (SUM 100)
 45. # 40 CONC. BEAM CONTROL JT. - 1" PLASTIC (SUM 100)
 46. # 40 CONC. BEAM CONTROL JT. - 1" PLASTIC (SUM 100)
 47. # 40 CONC. BEAM CONTROL JT. - 1" PLASTIC (SUM 100)
 48. # 40 CONC. BEAM CONTROL JT. - 1" PLASTIC (SUM 100)
 49. # 40 CONC. BEAM CONTROL JT. - 1" PLASTIC (SUM 100)
 50. # 40 CONC. BEAM CONTROL JT. - 1" PLASTIC (SUM 100)

JOB NO: 7805-751
 DATE: NOV. 12, 1973

ARCHITECTS - ENGINEERS - SURVEYORS
 601 COLLEGE ROAD, FAIRBANKS, ALASKA 99701, PHONE: 452-1124

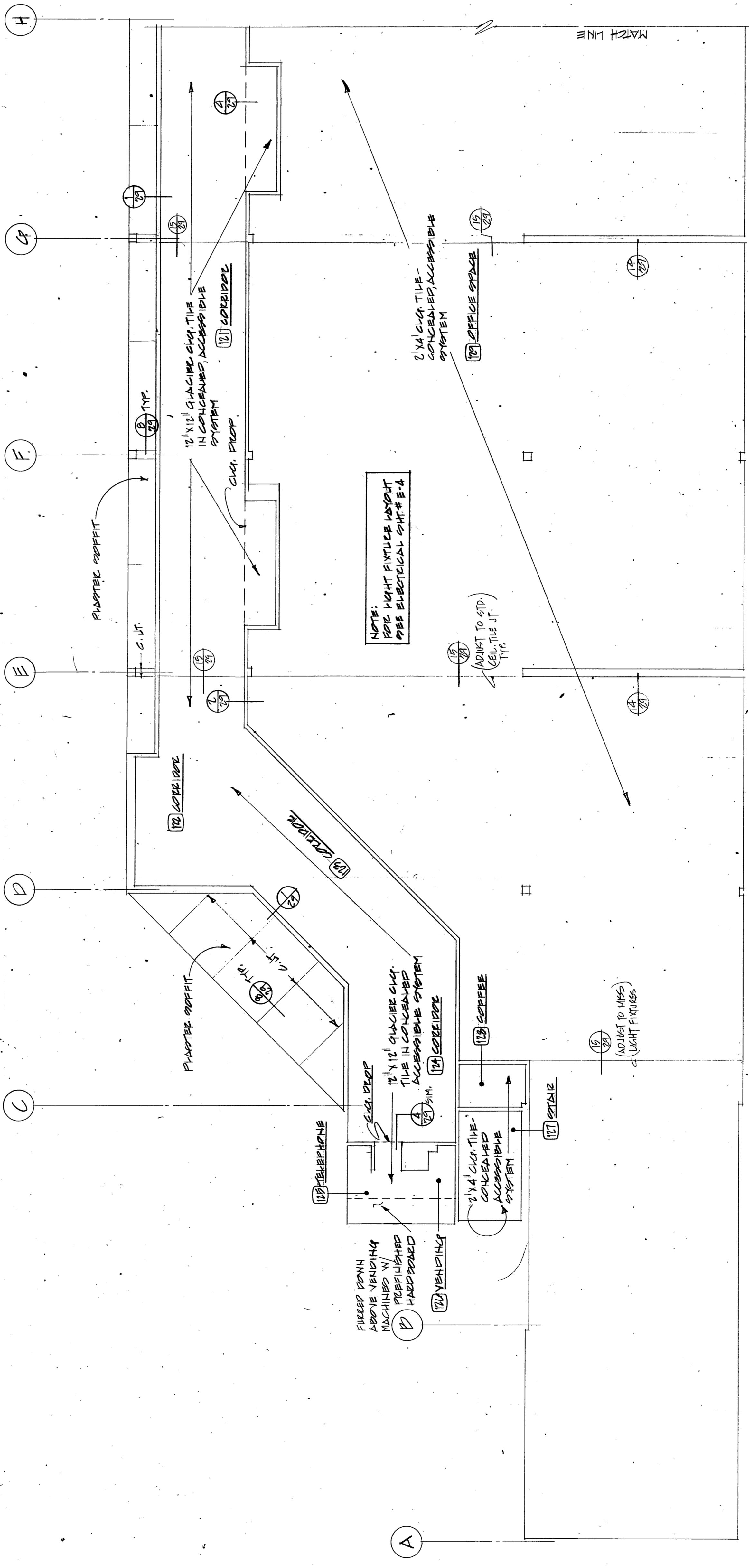
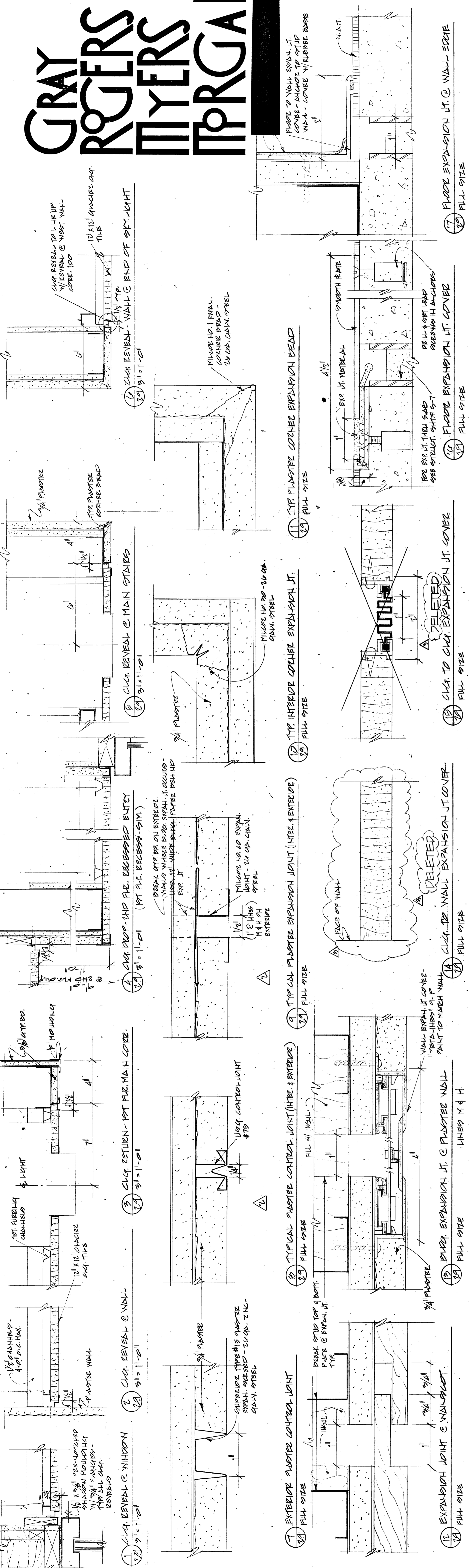
STATE OF ALASKA
 DEPARTMENT OF PUBLIC WORKS
 DIVISION OF BUILDINGS

FAIRBANKS REGIONAL OFFICE BUILDING
 DATA - 8-1018 - BLOCK 88A - FAIRBANKS, ALASKA

PHASE TWO

26
 SHEET NO. OF 41

PARKING LEVEL DEFLECTED CLR PLAN - EAST HALF

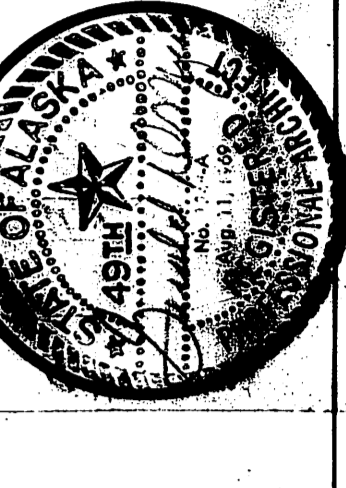


JOB NO. 736-791
DATE: 100-10-1973

ARCHITECTS - ENGINEERS - SURVEYORS
801 COLLEGE ROAD, FAIRBANKS, ALASKA 99701, PHONE: 452-1241

STATE OF ALASKA
DEPARTMENT OF PUBLIC WORKS
DIVISION OF BUILDINGS

FAIRBANKS REGIONAL
OFFICE BUILDING



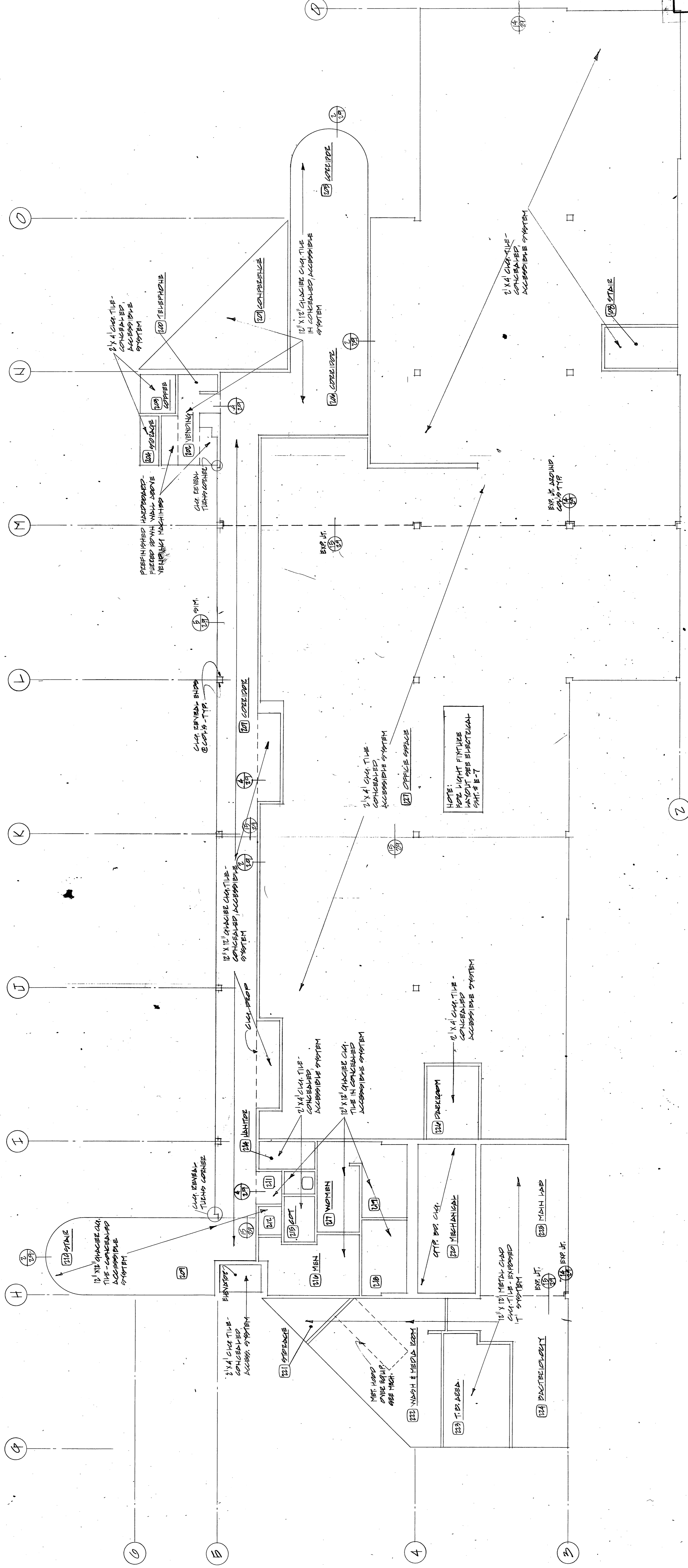
29
SHEET NO. OF 61

AS BUILTS
PRODUCED IN ACCORDANCE WITH CONTRACTOR
SUBMITTED AS BUILT RECORDS AS APPROVED
BY THE STATE OF ALASKA.

REVISIONS
JUNE 18, 1974
REVISED PER CONTROL
BY CONVEY 053
AS BUILT DRAWING 7/18/74

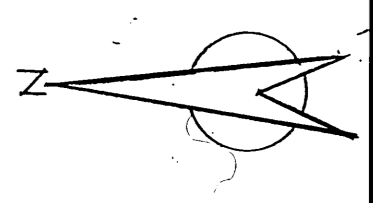
ADDITIONAL E.T. - NOV. 20, 1973
WHERE ANY DISCREPANCIES BETWEEN THE REFLECTED
CEILING PLANS & THE STAIR SECTIONS & DETAILS
OCCUR PERTAINING TO CEILING MATERIALS AT
STAIRWELLS, THE STAIR SECTIONS & DETAILS
SHALL TAKE PRECEDENCE.

FIRST FLOOR REFLECTED CLG. PLAN - WEST HALF



1/15/74
 ALASKA REG. NO. 1073
 PRODUCED IN ACCORDANCE WITH CONTRACTOR
 SUBMITTED AS BUILT RECORDS AS APPROVED
 BY THE STATE OF ALASKA.

SECOND FLOOR REFLECTED CEILING PLAN

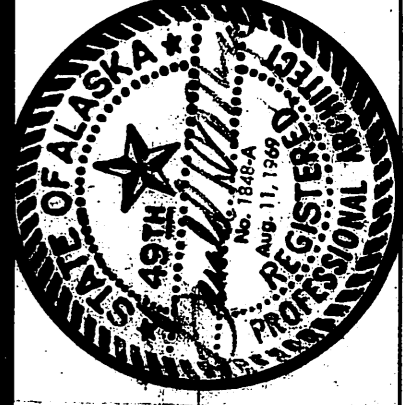


JOB NO. 7265, 734
 DATE NOV 10, 1973

ARCHITECTS - ENGINEERS - SURVEYORS
 601 COLLEGE ROAD, FAIRBANKS, ALASKA 99701, PHONE: 452-1241

STATE OF ALASKA
 DEPARTMENT OF PUBLIC WORKS - TWO
 DIVISION OF BUILDINGS

FAIRBANKS REGIONAL
 OFFICE BUILDING
 SQA 8-018 - BLOCK 53A - FAIRBANKS, ALASKA



30
 SHEET NO. OF 61

