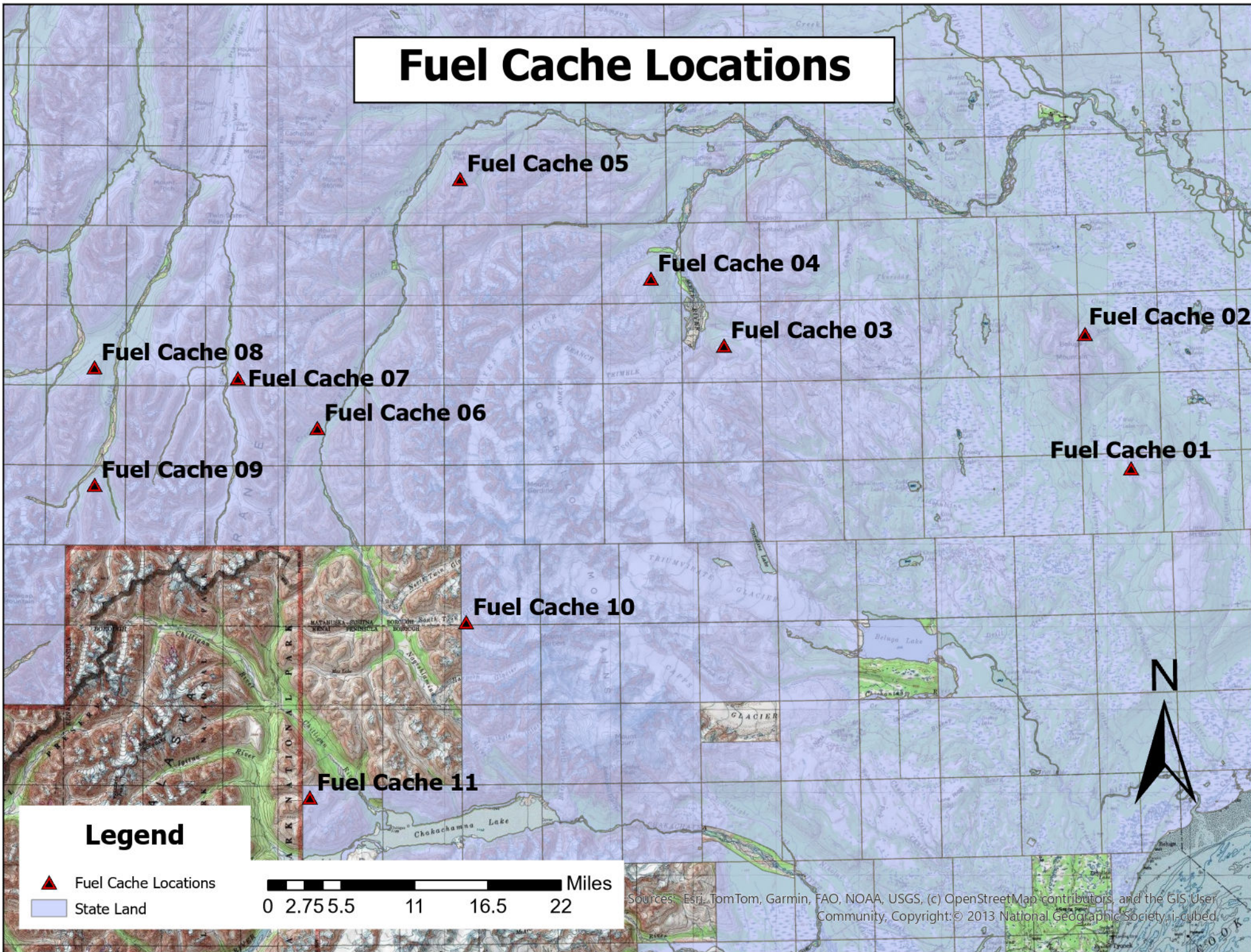
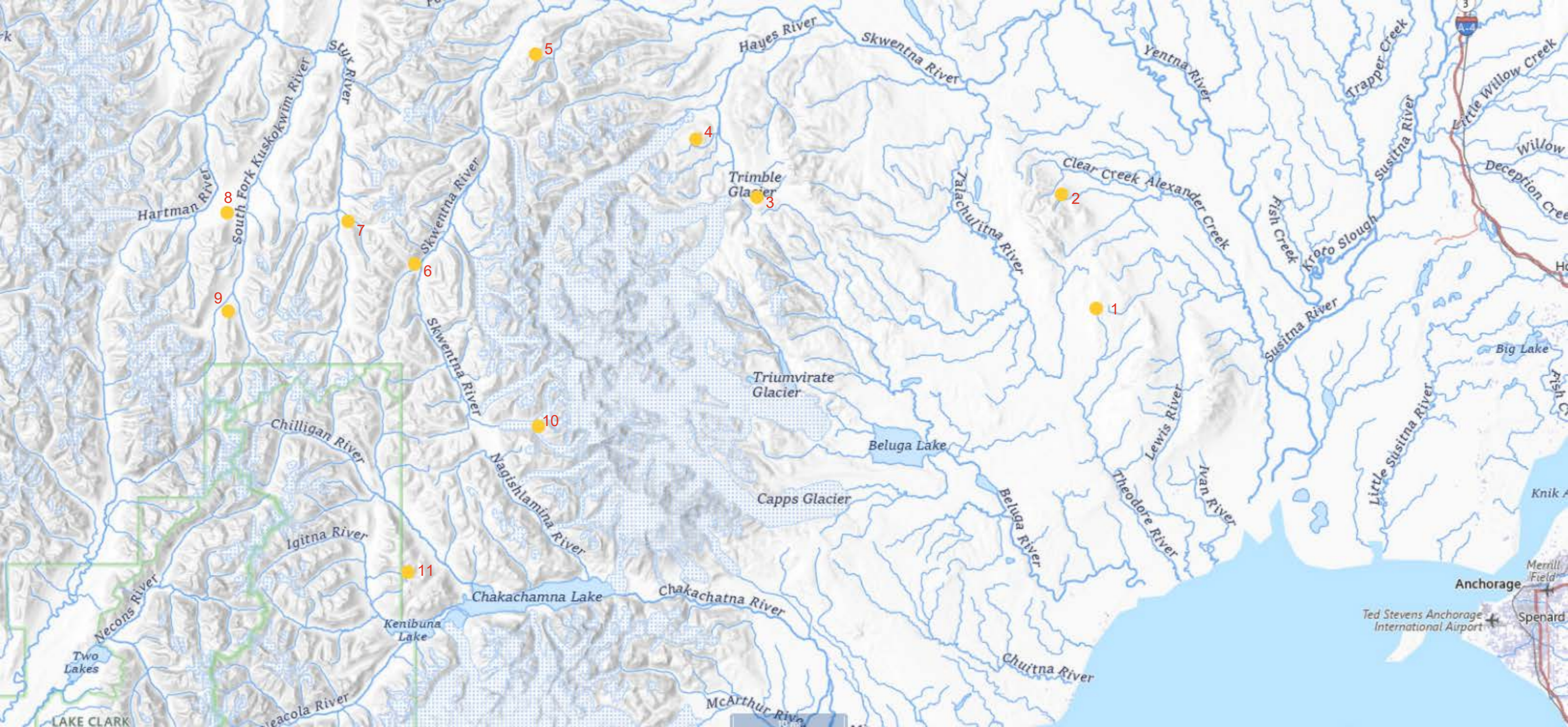


| SiteID | Long. | Lat. |
|---------------|--------------|-------------|
| Fuel Cache 01 | -151.062640 | 61.584293 |
| Fuel Cache 02 | -151.158729 | 61.731201 |
| Fuel Cache 03 | -151.984050 | 61.727280 |
| Fuel Cache 04 | -152.148965 | 61.800924 |
| Fuel Cache 05 | -152.584794 | 61.911100 |
| Fuel Cache 06 | -152.913438 | 61.641662 |
| Fuel Cache 07 | -153.094531 | 61.695707 |
| Fuel Cache 08 | -153.422046 | 61.706843 |
| Fuel Cache 09 | -153.420084 | 61.579414 |
| Fuel Cache 10 | -152.577249 | 61.430465 |
| Fuel Cache 11 | -152.931312 | 61.241061 |

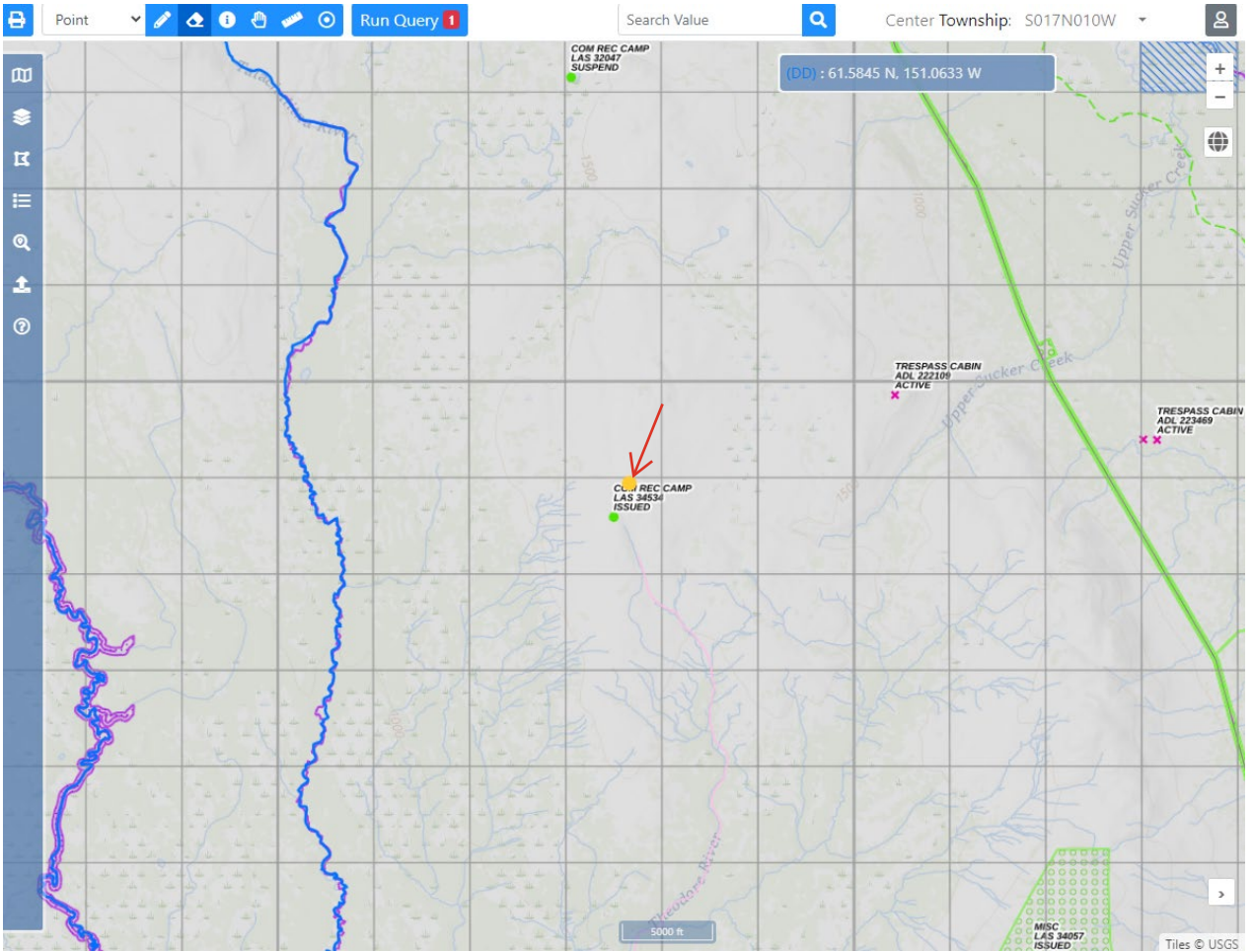
Fuel Cache Locations



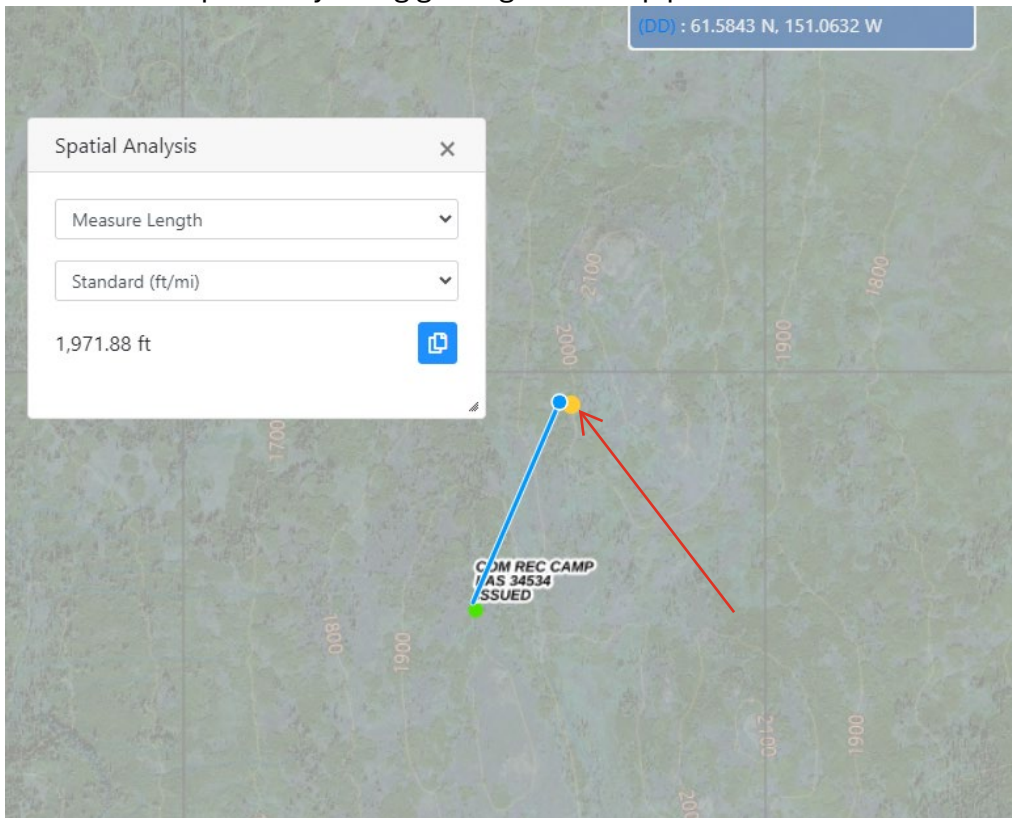
Sources: Esri, TomTom, Garmin, FAO, NOAA, USGS, (c) OpenStreetMap contributors, and the GIS User Community, Copyright: © 2013 National Geographic Society, i-cubed.



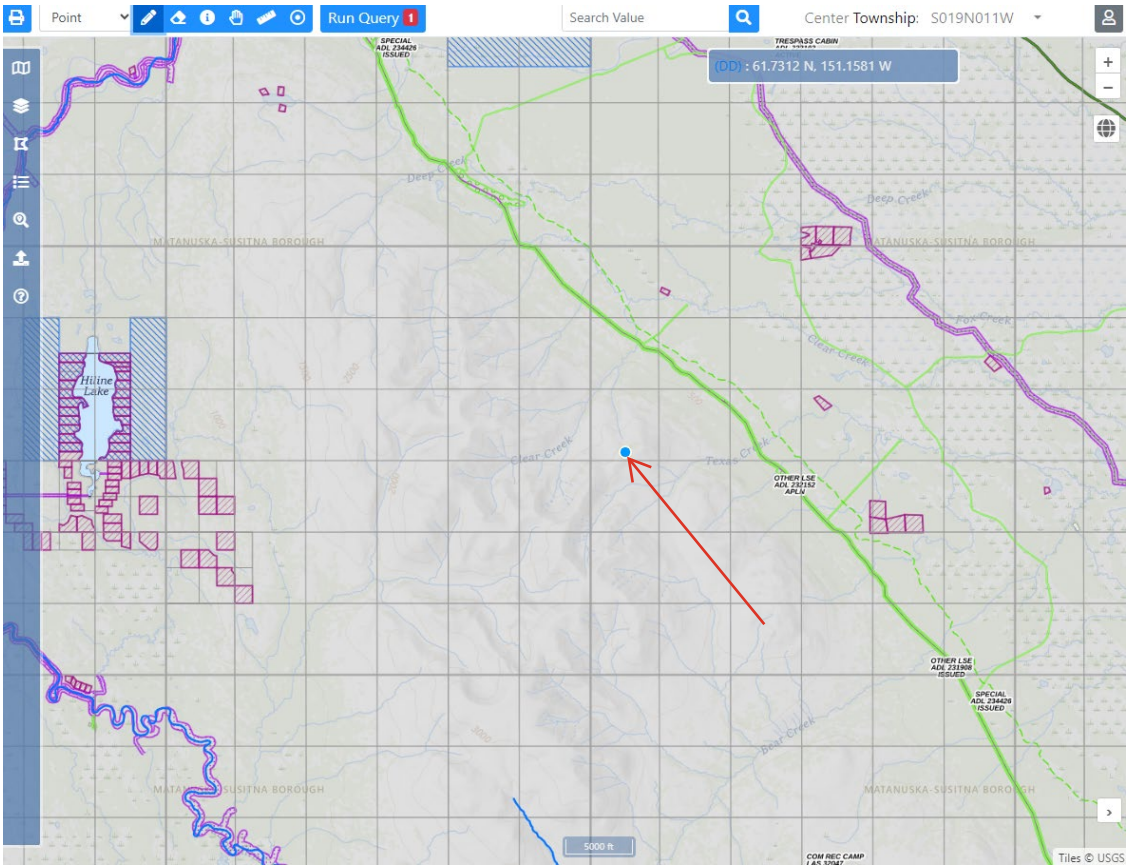
Site 1



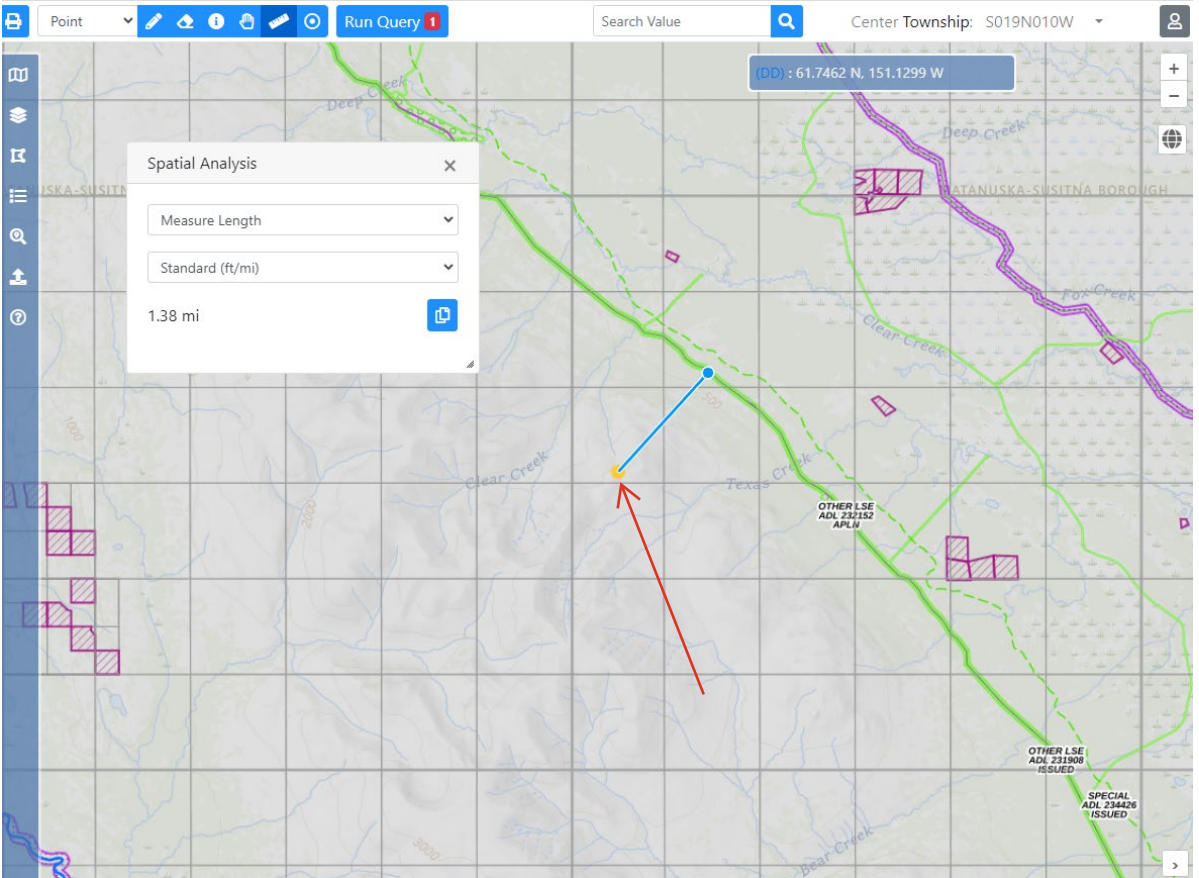
Site 1 proximity to big game guide camp permit LAS 35434



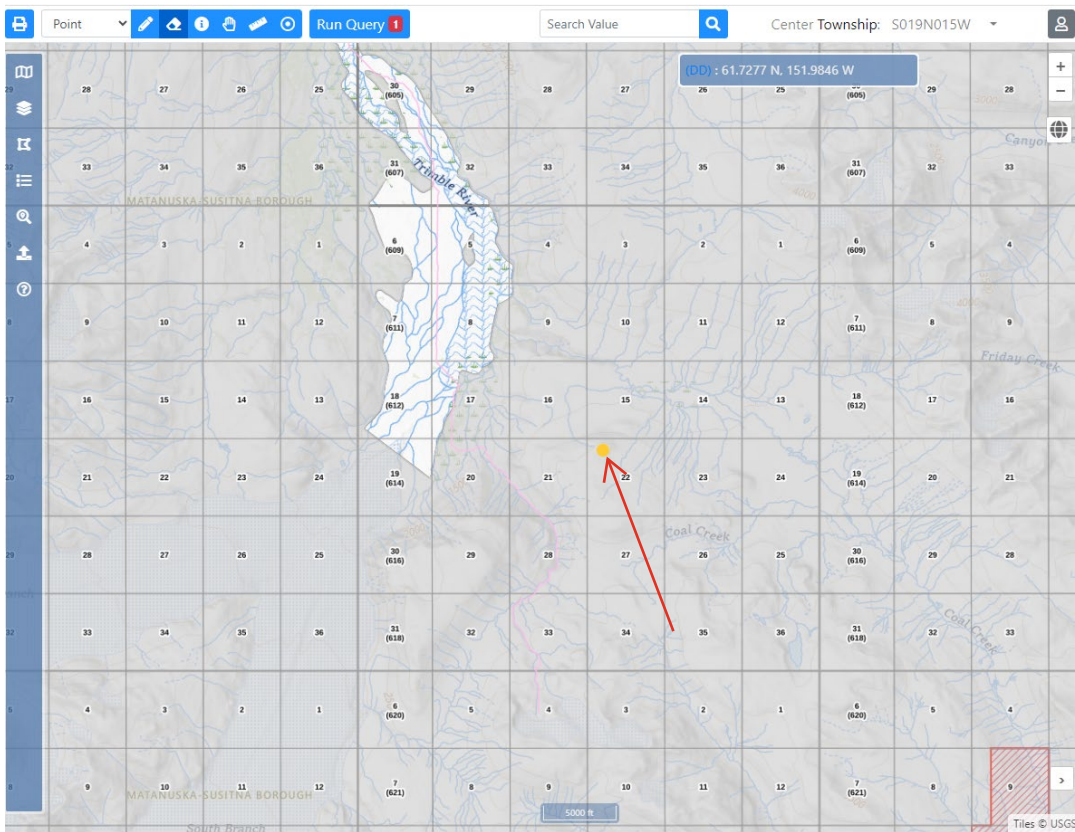
Site 2



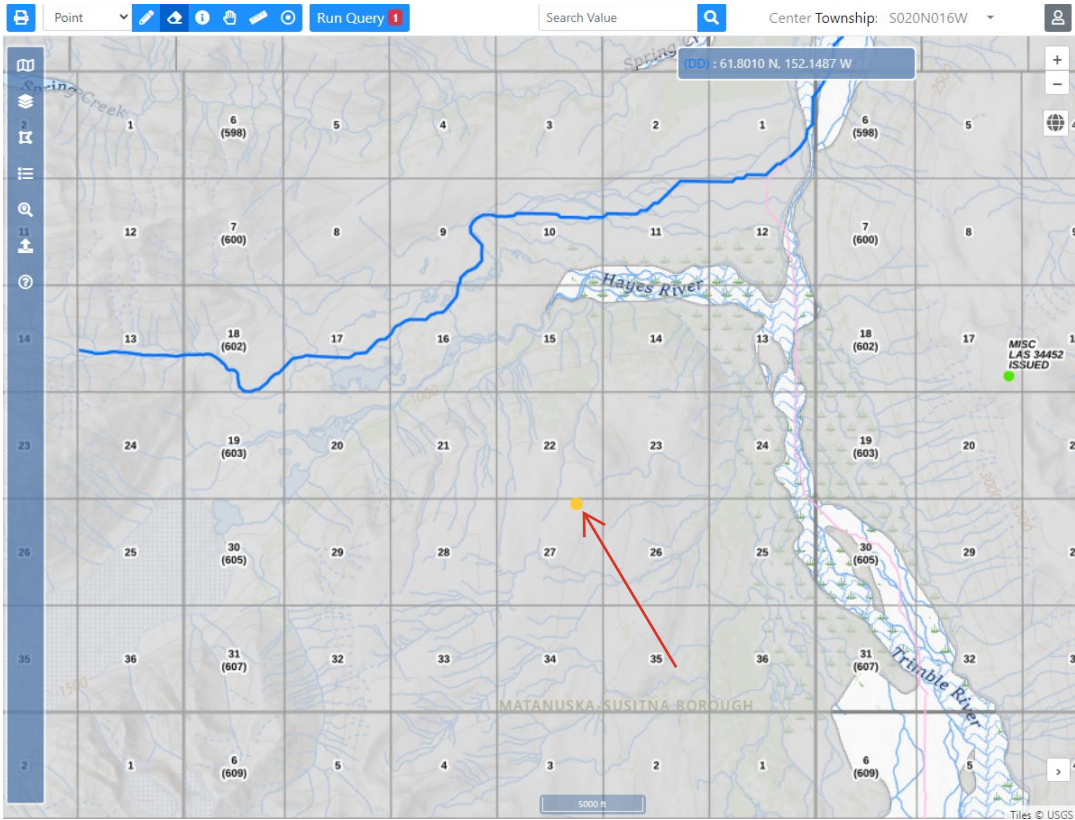
Site 2 proximity to ADL 223152 (Donlin Gold proposed LNG Pipeline)



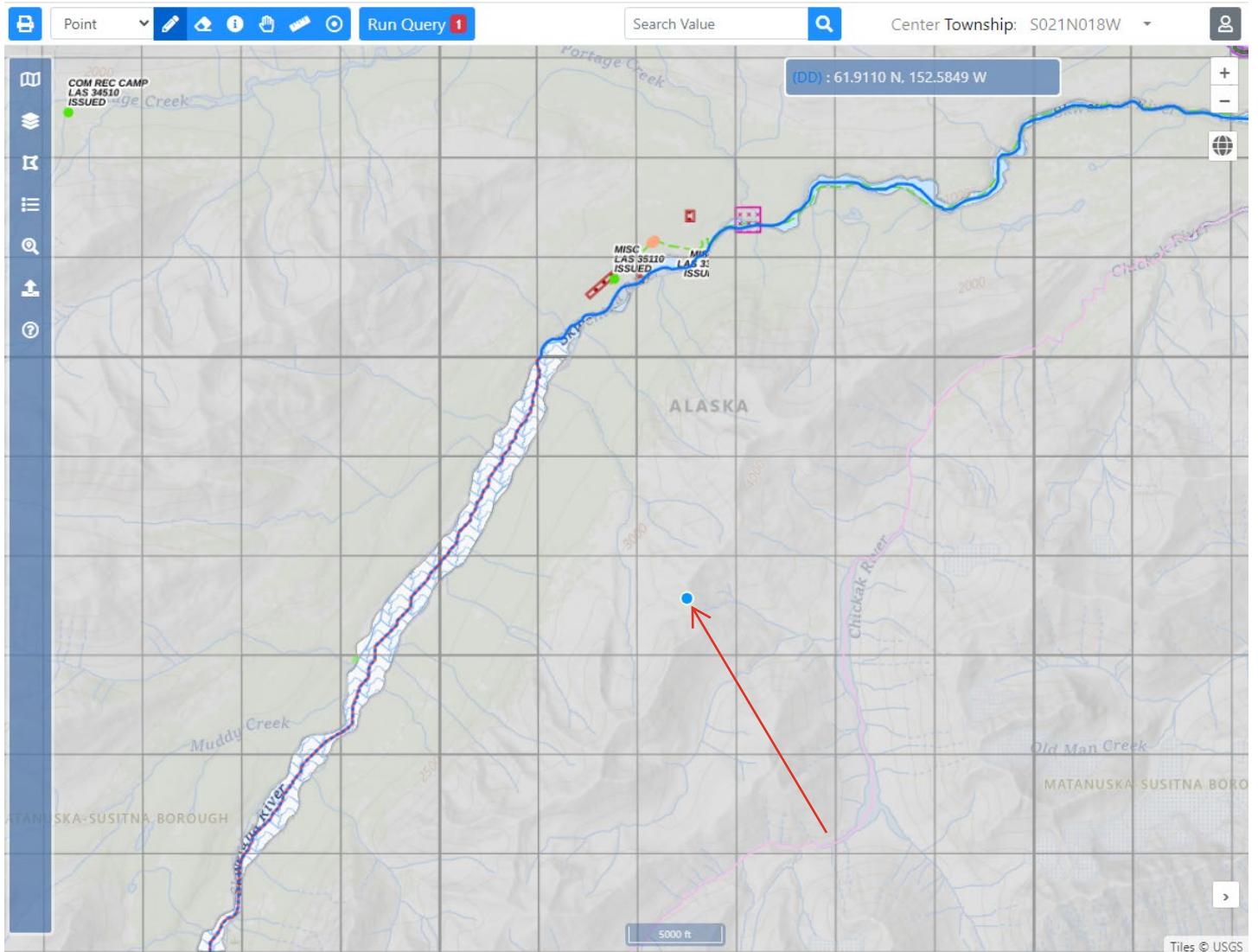
Site 3



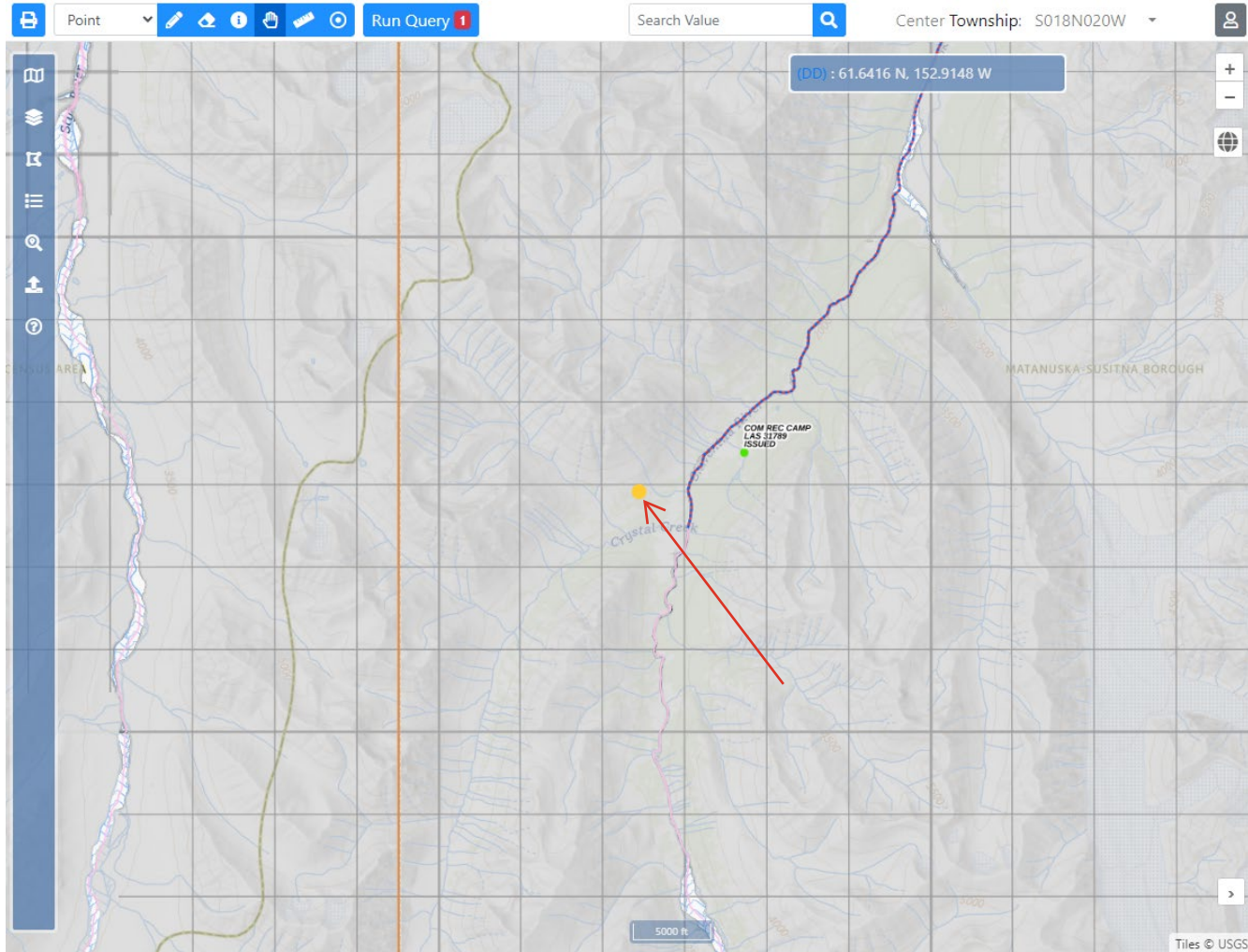
Site 4



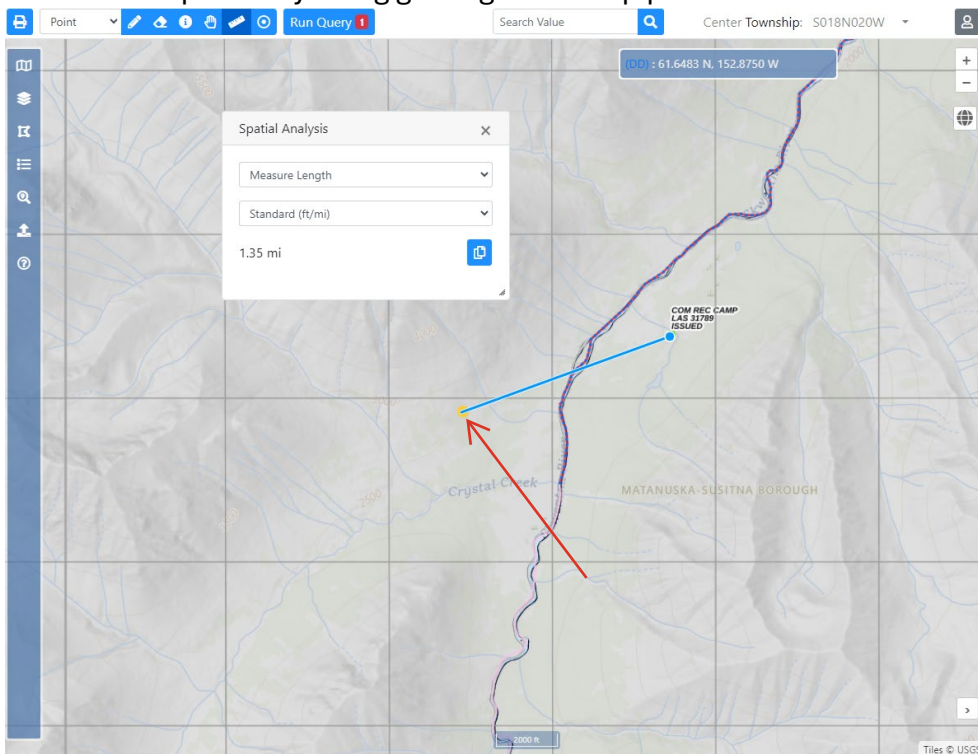
Site 5



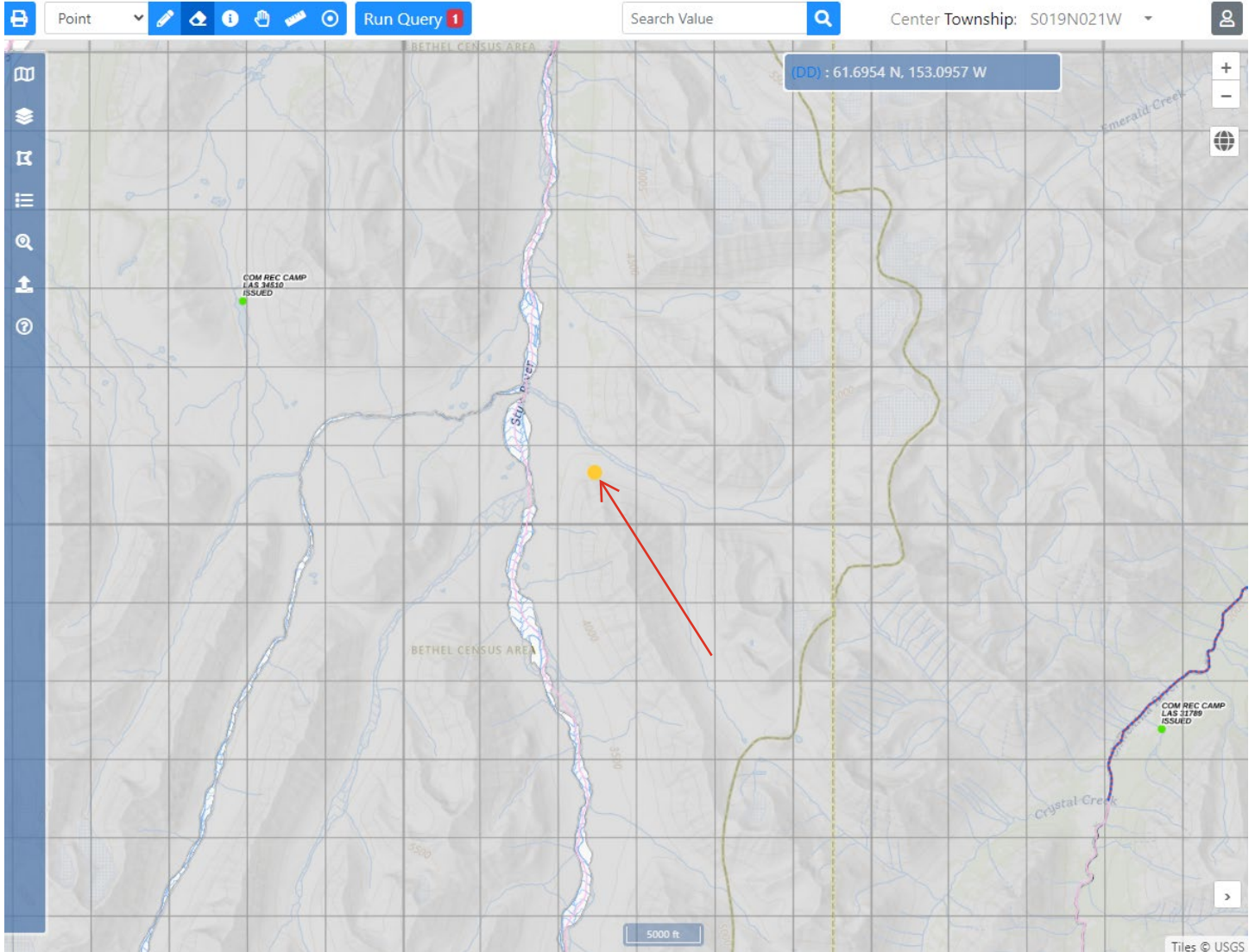
Site 6



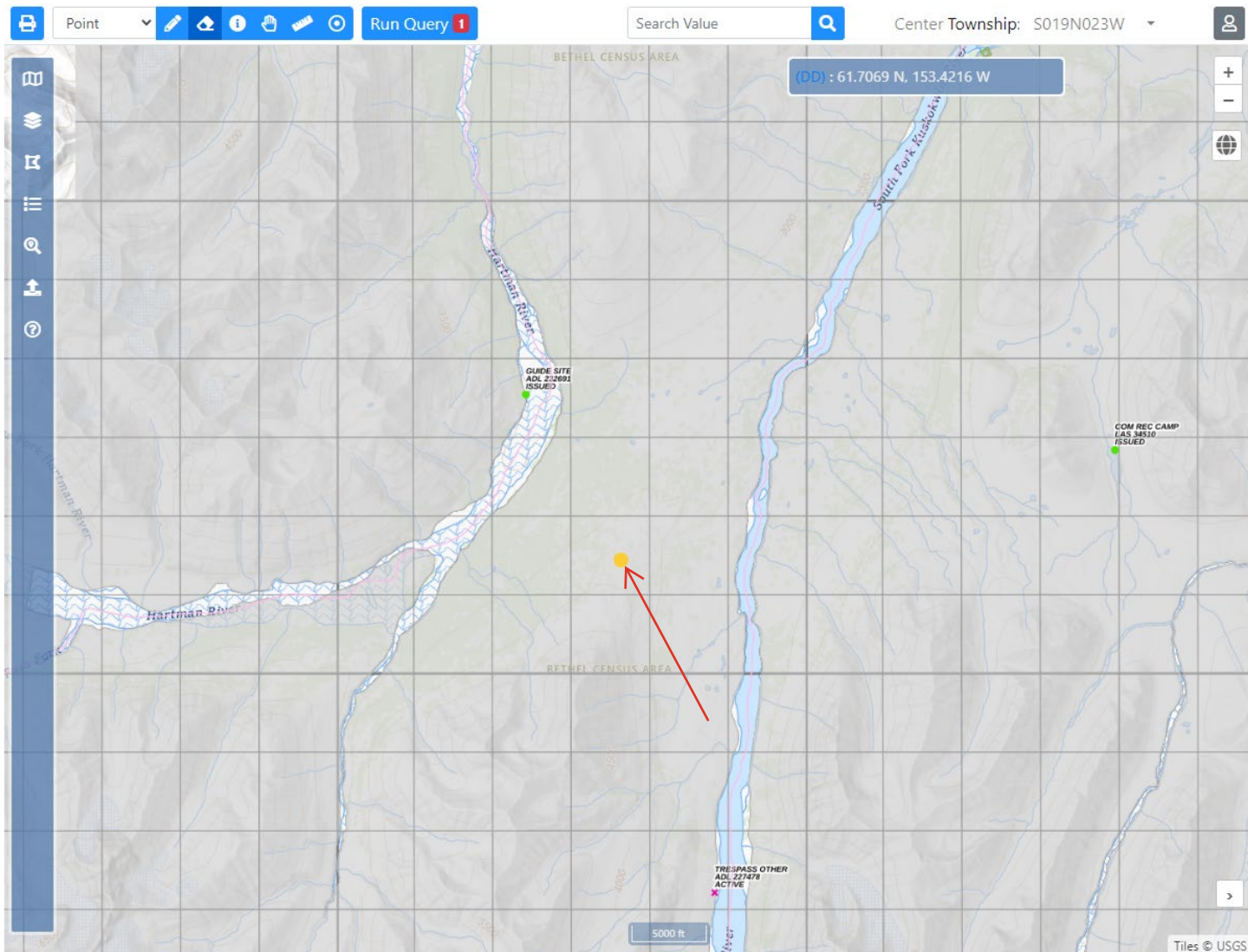
Site 6 proximity to big game guide camp permit LAS 31789



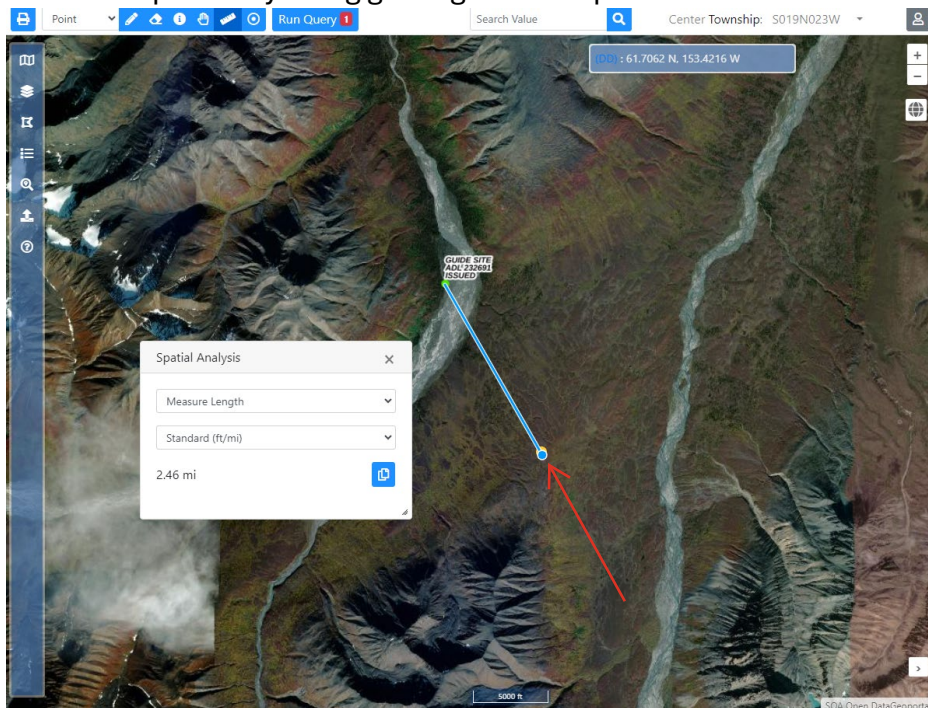
Site 7



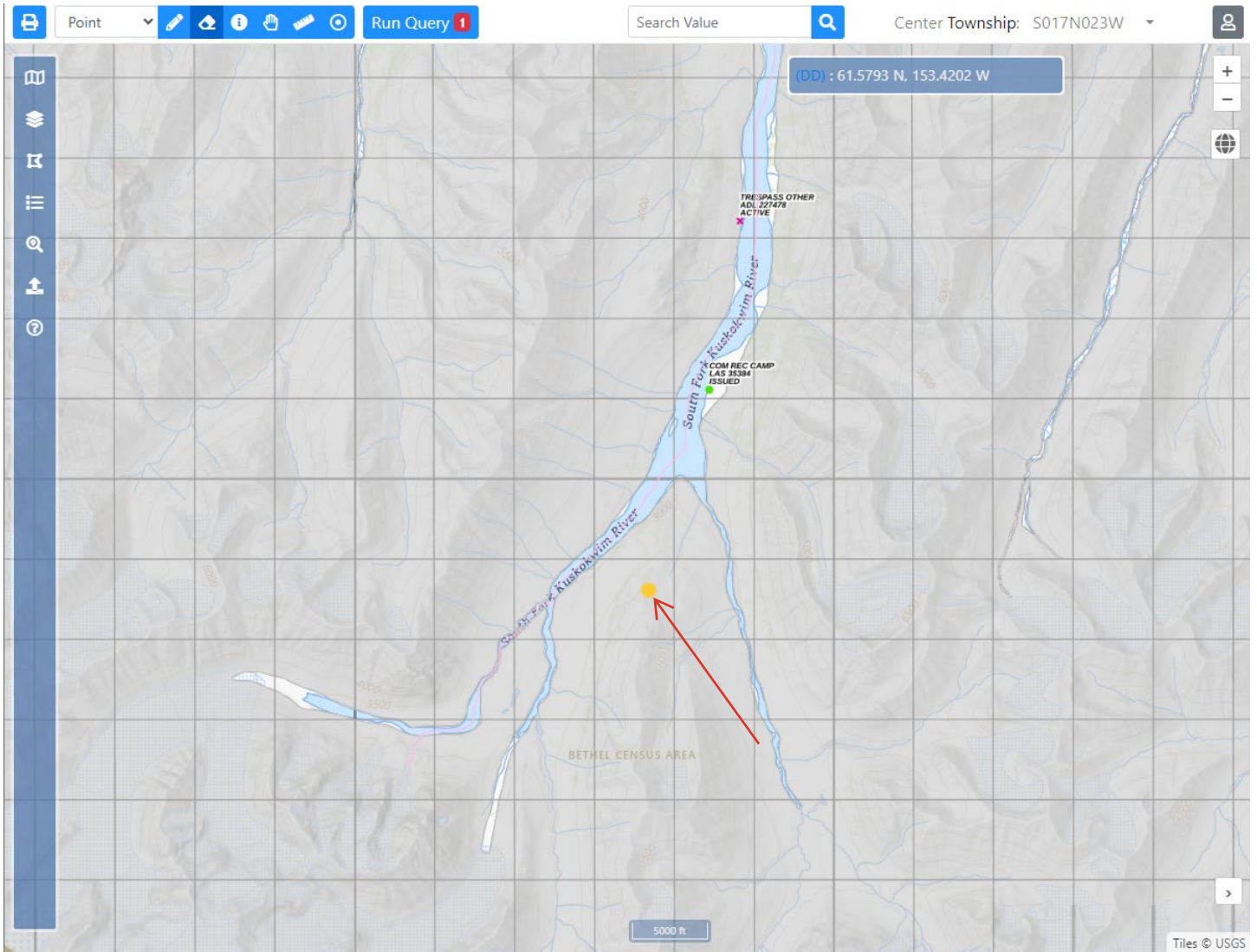
Site 8



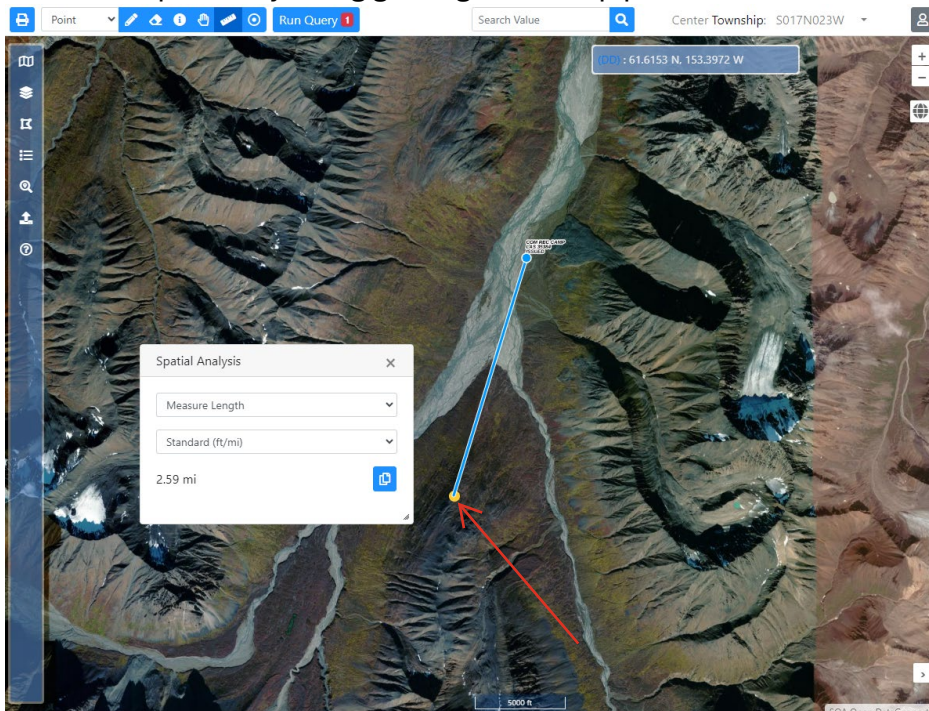
Site 8 proximity to big game guide camp Lease ADL 232691



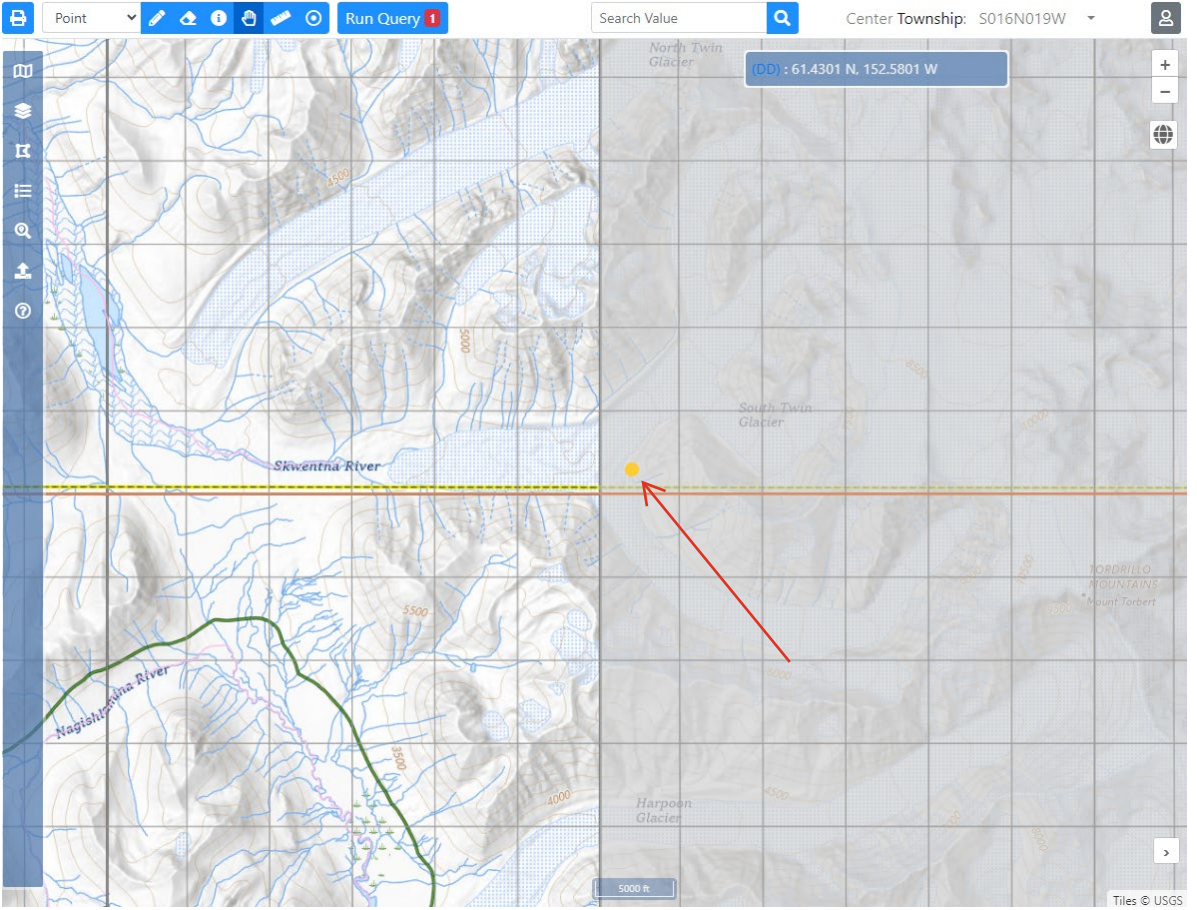
Site 9



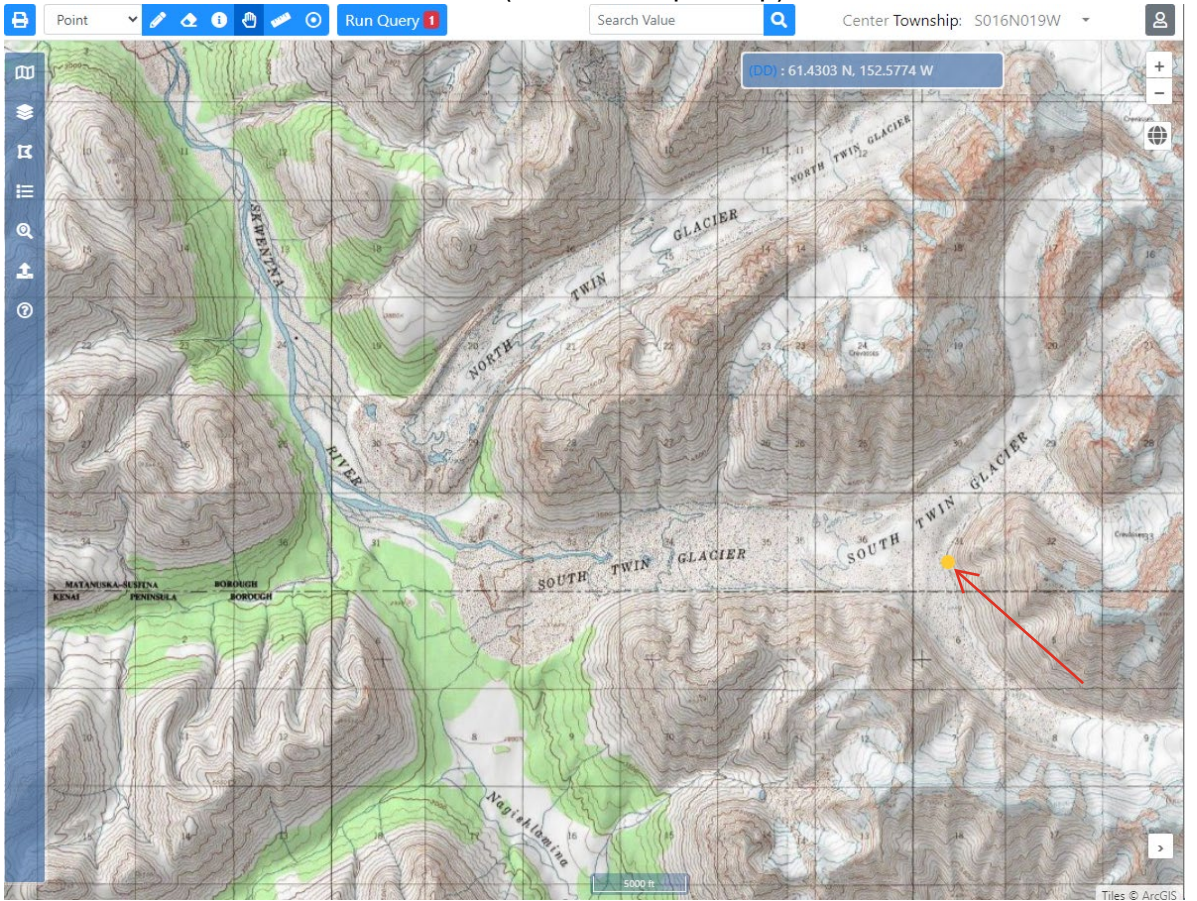
Site 9 proximity to big game guide camp permit LAS 35384



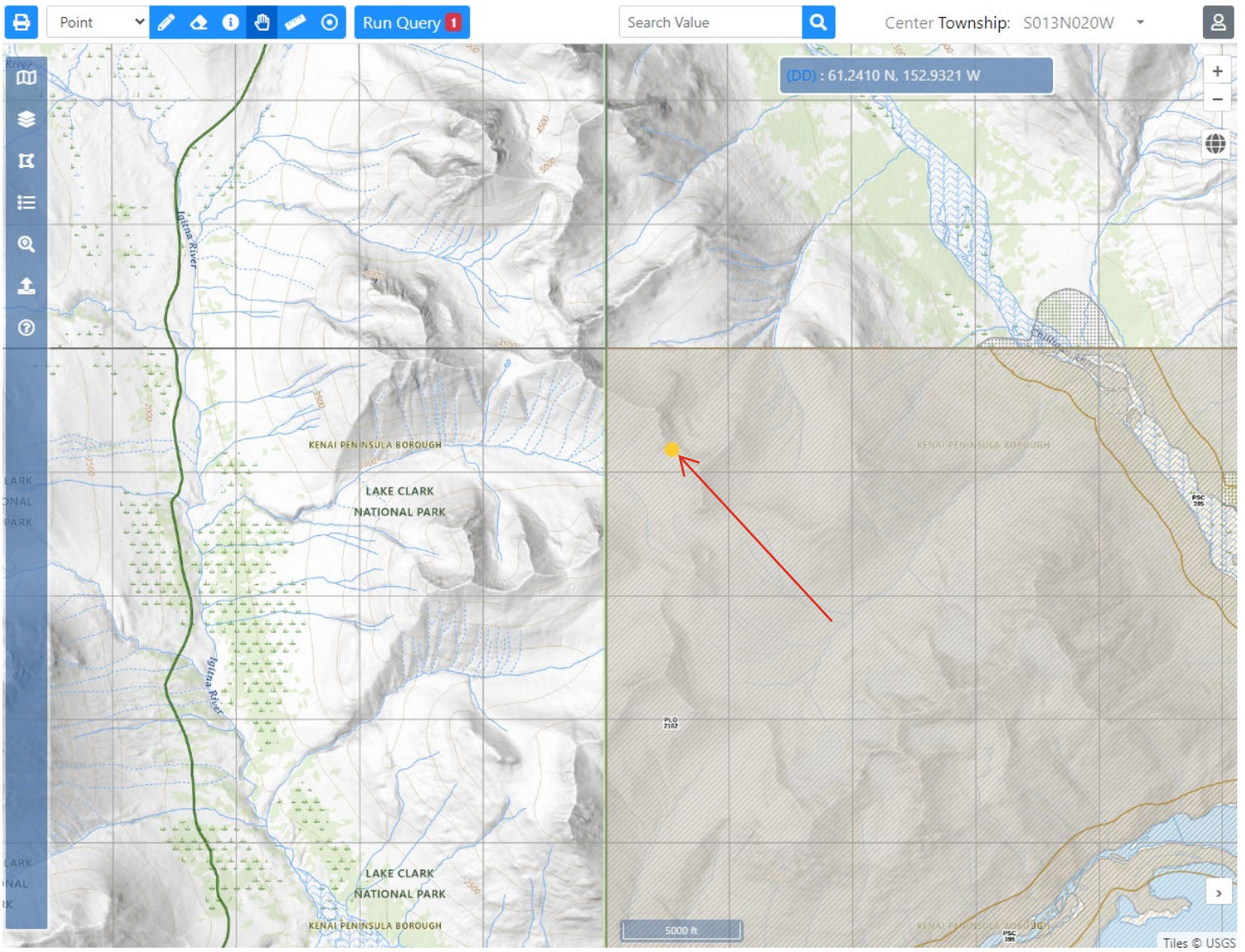
Site 10



Site 10 (Alternate topo map)



Site 11



Site 11 proximity to National Park Boundary

