





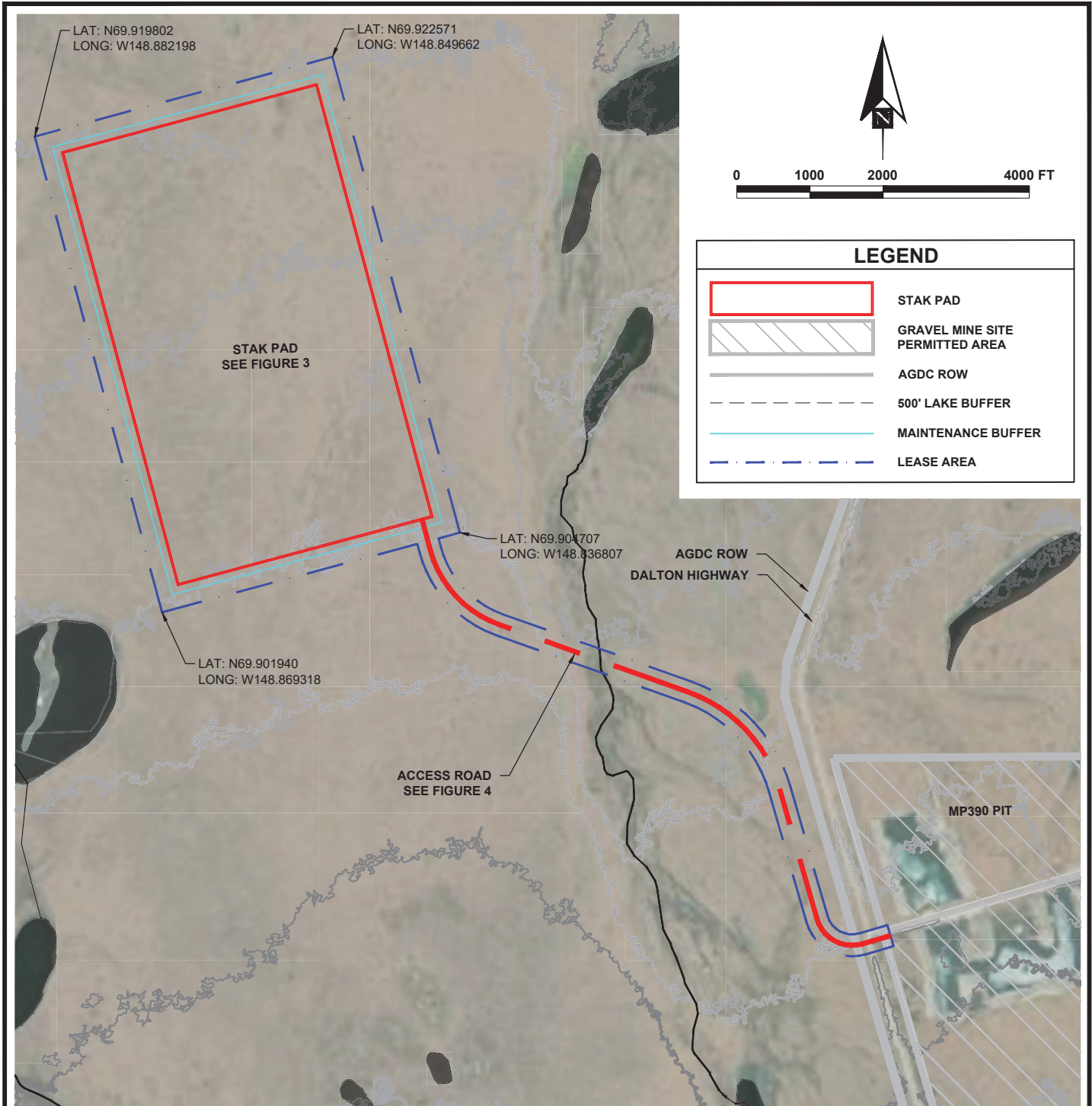








LEGEND	
	STAK PAD LOCATION
	GRAVEL MINE SITE PERMITTED AREA
	AGDC ROW
	TAPS (ABOVE GROUND)
	TAPS (BELOW GROUND)
	DALTON HIGHWAY

STAK ENERGY
 DATA CENTER PAD FACILITY
 DALTON HIGHWAY - MP390

STAK PAD SITE OVERVIEW FIGURE 1 11/17/2025



LEGEND

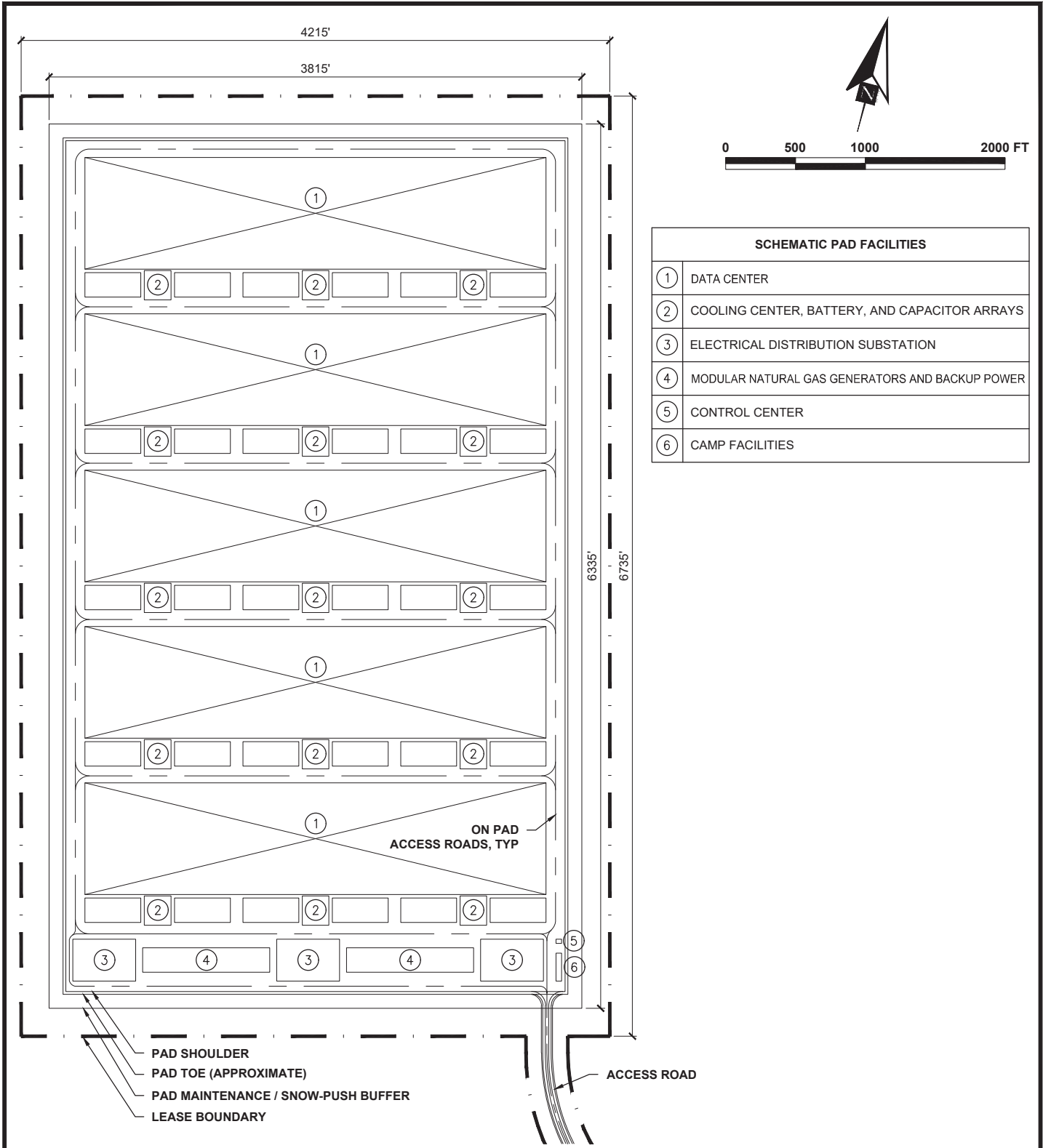
	STAK PAD
	GRAVEL MINE SITE PERMITTED AREA
	AGDC ROW
	500' LAKE BUFFER
	MAINTENANCE BUFFER
	LEASE AREA

STAK PAD SITE PLAN

ESTIMATED PROJECT FOOTPRINT		
PROJECT COMPONENT	LEASE AREA (ACRES)	APPROX. PROJECT FOOTPRINT (ACRES)
STAK PAD	651.7	554.8
ACCESS ROAD	63.7	17.3
TOTAL	715.4	572.1

NOTE: APPROX. PROJECT FOOTPRINT INCLUDES MAINTENANCE/SNOW-PUSH AREAS BEYOND THE TOE OF SLOPE.

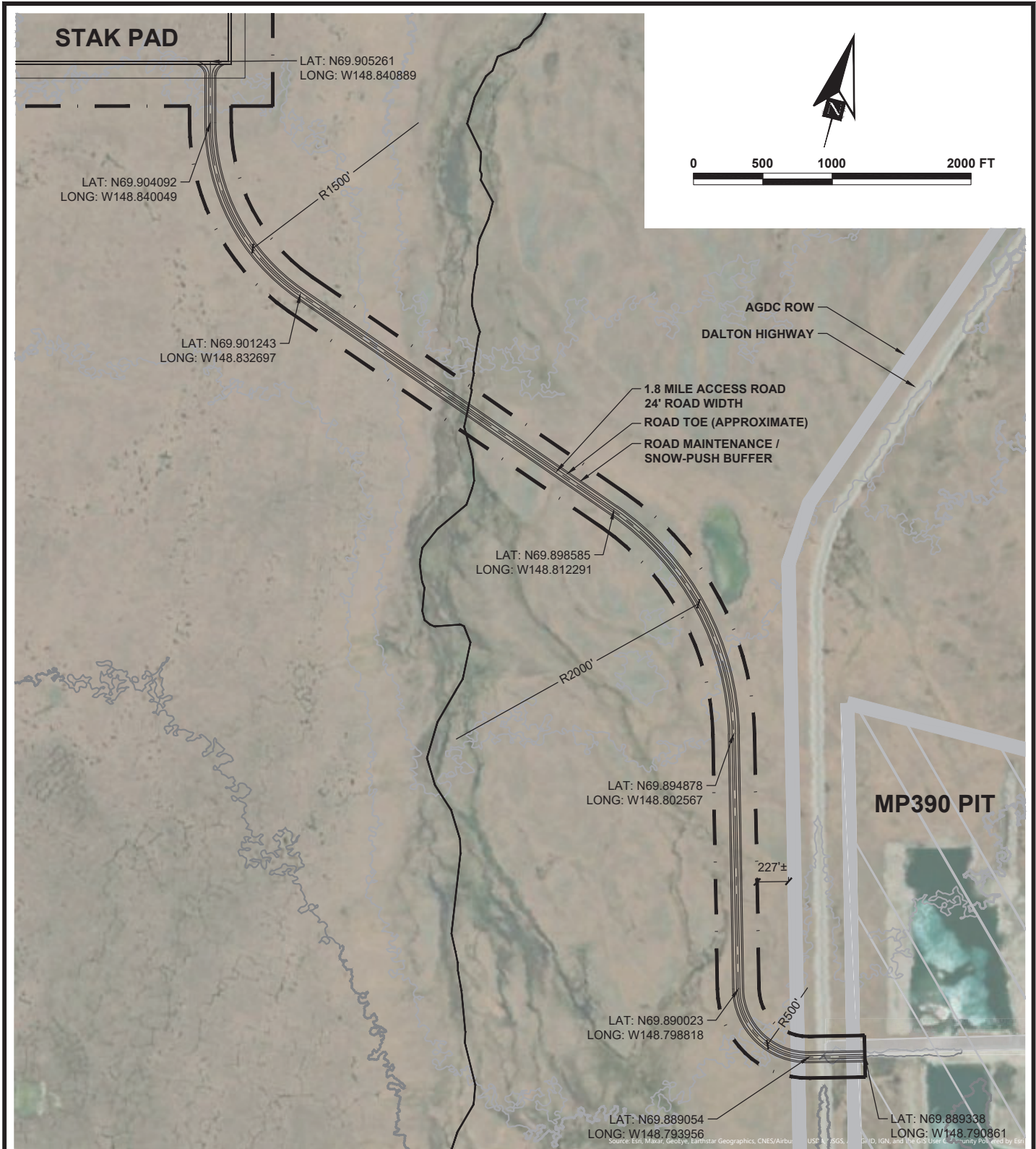
STAK ENERGY
 DATA CENTER PAD FACILITY
 DALTON HIGHWAY - MP390
FIGURE 2 11/17/2025



SCHEMATIC PAD FACILITIES	
①	DATA CENTER
②	COOLING CENTER, BATTERY, AND CAPACITOR ARRAYS
③	ELECTRICAL DISTRIBUTION SUBSTATION
④	MODULAR NATURAL GAS GENERATORS AND BACKUP POWER
⑤	CONTROL CENTER
⑥	CAMP FACILITIES

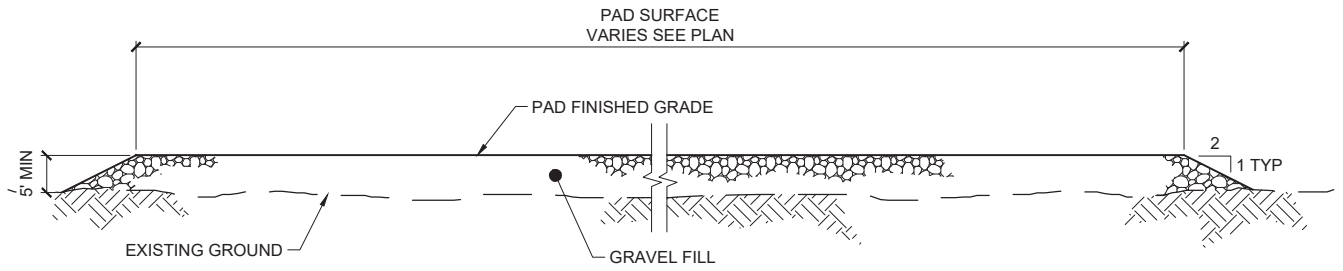
**STAK PAD
SCHEMATIC FACILITY LAYOUT PLAN**

STAK ENERGY
 DATA CENTER PAD FACILITY
 DALTON HIGHWAY - MP390
FIGURE 3 11/17/2025

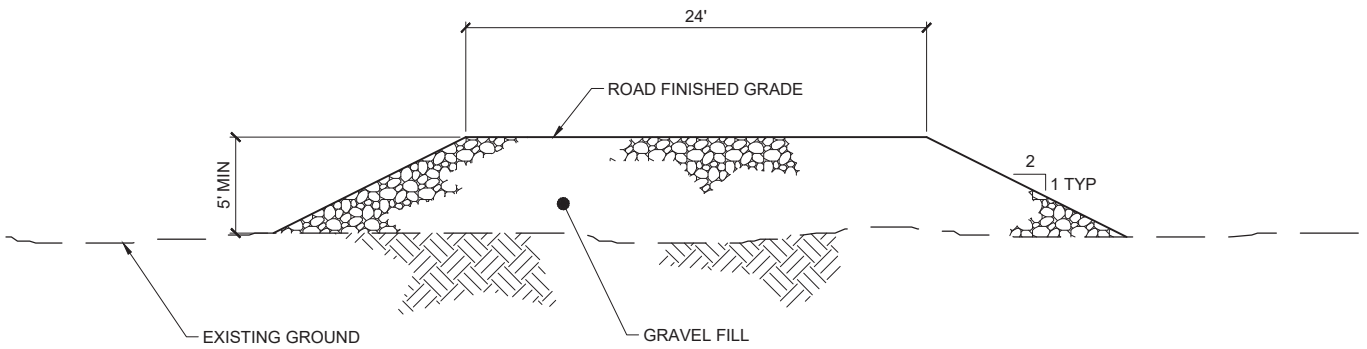


STAK ACCESS ROAD

STAK ENERGY
 DATA CENTER PAD FACILITY
 DALTON HIGHWAY - MP390
FIGURE 4 11/17/2025



TYPICAL PAD SECTION
NTS



TYPICAL ACCESS ROAD SECTION
NTS

TYPICAL EMBANKMENT SECTIONS

STAK ENERGY
 DATA CENTER PAD FACILITY
 DALTON HIGHWAY - MP390
FIGURE 5 11/17/2025