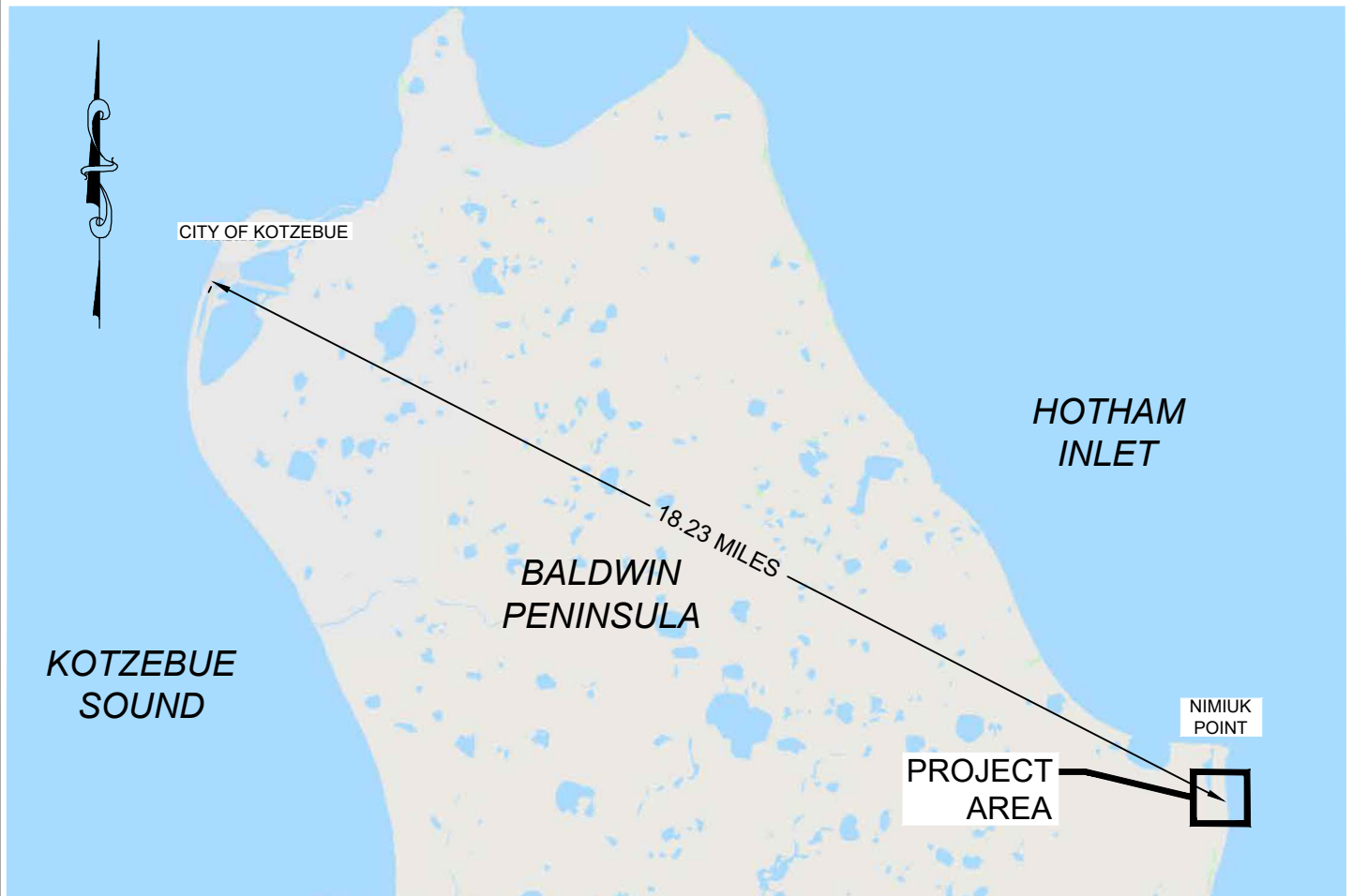


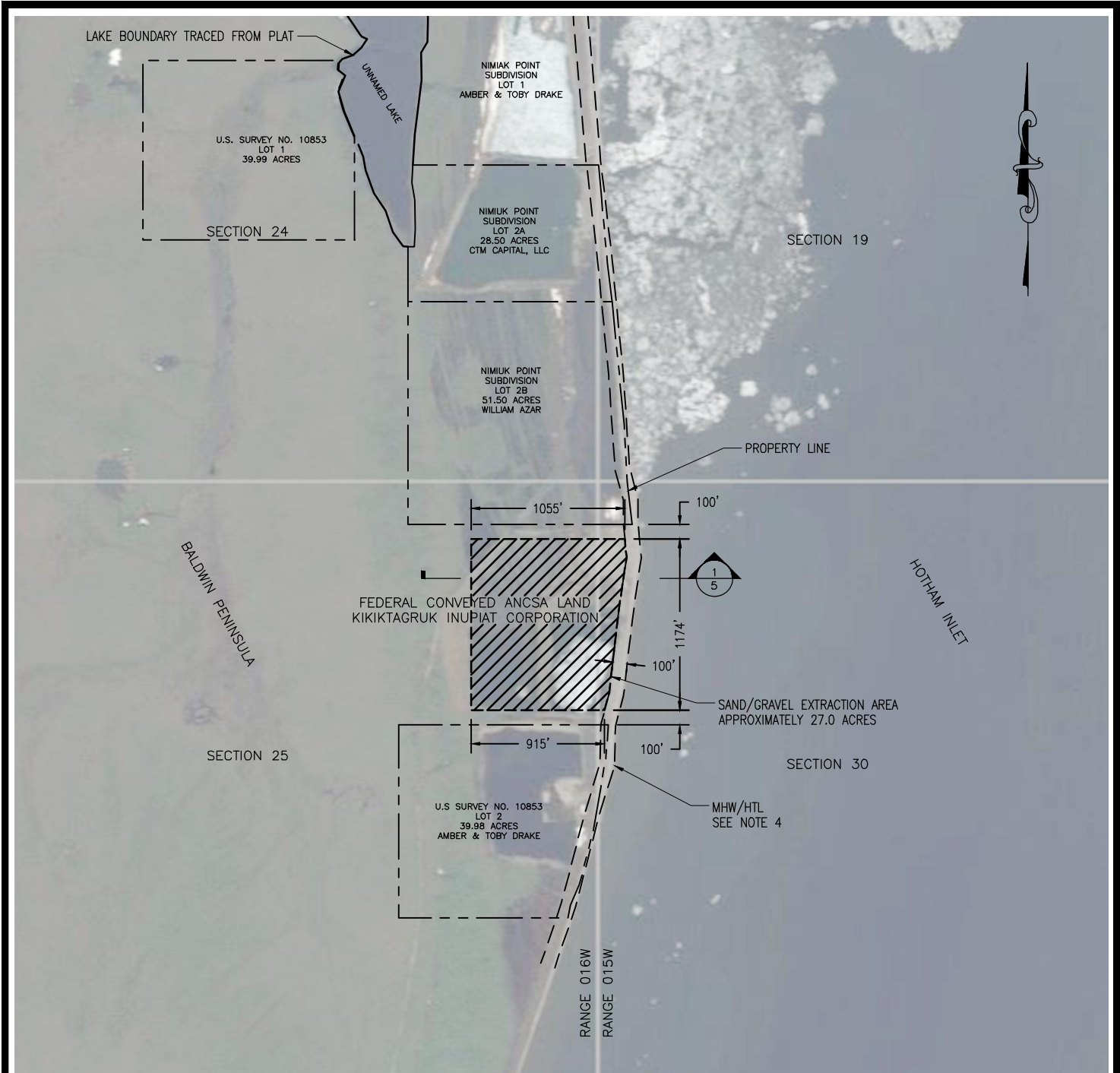
LOCATION



VICINITY MAP



NIMIUK POINT SAND & GRAVEL
GRAVEL EXTRACTION KOTZEBUE, ALASKA
WATERBODY: HOTHAM INLET
SECS. 25&30; T016N; RS. 015&016W MERIDIAN: KATEEL RIVER USGS QUADRANGLE KOTZEBUE D-1 SE LAT: 66.76226° LONG: -162.01474°
LOCATION AND VICINITY MAP
10/7/2024 SHEET 1 OF 6



PROJECT SITE

NOTES:

1. IMAGE SOURCE: WEBSITE dnr.alaska.gov/mapper/ OBTAINED ON 7 SEPTEMBER 2020. IMAGE IS NOT GEO-REFERENCED.
2. PROPERTY BOUNDARY INFORMATION FROM PLAT No. 98-8 DATED 23 JUNE 1998 AND U.S. SURVEY 10853 DATED 14 DECEMBER 1994.
3. TIDAL INFORMATION FROM NOAA STATION 9491094, RED DOG DOCK, ALASKA (NAVD88).
 - 3.1. HTL (HIGH TIDE LINE) = 1.1'
 - 3.2. MHW (MEAN HIGH WATER) = 0.8'
 - 3.3. MLLW (MEAN LOWER-LOW WATER) = 0.0'
4. TOPOGRAPHIC SURVEY HAS NOT BEEN PERFORMED FOR PROJECT AREA THEREFORE HTL AND MHW LINE ARE APPROXIMATED BASED ON WATERS EDGE FROM IMAGE. A SURVEY WILL BE PERFORMED PRIOR TO START OF EXTRACTION TO DETERMINE MHW, HTL, AND PROPERTY LINE LOCATIONS.
5. EXTRACTED MATERIALS WILL BE STOCKPILED IN UPLANDS.
6. CONTRACTOR STAGING OF EQUIPMENT AND MATERIALS IN UPLANDS.



SCALE IN FEET

NIMIUK POINT SAND & GRAVEL

GRAVEL EXTRACTION
KOTZEBUE, ALASKA

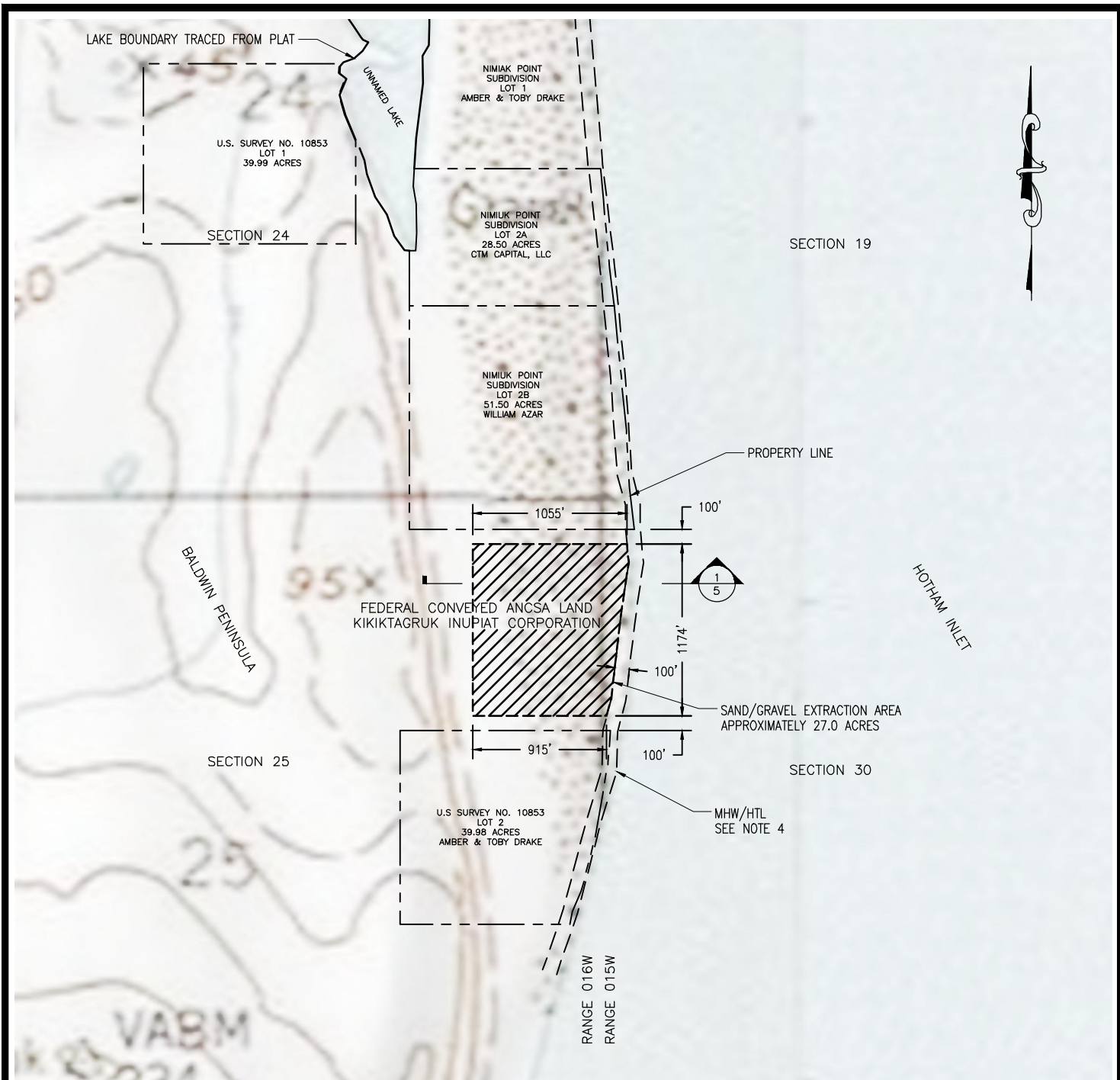
WATERBODY: HOTHAM INLET

SECS. 25&30; T016N; RS. 015&016W
MERIDIAN: KATEEL RIVER
USGS QUADRANGLE KOTZEBUE D-1 SE
LAT: 66.76226° LONG: -162.01474°

PROJECT SITE

10/7/2024

SHEET 2 OF 6



PROJECT SITE TOPOGRAPHIC

NOTES:

1. IMAGE SOURCE: WEBSITE dnr.alaska.gov/mapper/ OBTAINED ON 23 SEPTEMBER 2020. IMAGE IS NOT GEO-REFERENCED.
2. PROPERTY BOUNDARY INFORMATION FROM PLAT No. 98-8 DATED 23 JUNE 1998 AND U.S. SURVEY 10853 DATED 14 DECEMBER 1994.
3. TIDAL INFORMATION FROM NOAA STATION 9491094, RED DOG DOCK, ALASKA (NAVD88).
 - 3.1. HTL (HIGH TIDE LINE) = 1.1'
 - 3.2. MHW (MEAN HIGH WATER) = 0.8'
 - 3.3. MLLW (MEAN LOWER-LOW WATER) = 0.0'
4. TOPOGRAPHIC SURVEY HAS NOT BEEN PERFORMED FOR PROJECT AREA THEREFORE HTL AND MHW LINE ARE APPROXIMATED BASED ON WATERS EDGE FROM IMAGE ON SHEET 2. A SURVEY WILL BE PERFORMED PRIOR TO START OF EXTRACTION TO DETERMINE MHW, HTL, AND PROPERTY LINE LOCATIONS.
5. EXTRACTED MATERIALS WILL BE STOCKPILED IN UPLANDS.
6. CONTRACTOR STAGING OF EQUIPMENT AND MATERIALS IN UPLANDS.



SCALE IN FEET

NIMIUK POINT SAND & GRAVEL

GRAVEL EXTRACTION
KOTZEBUE, ALASKA

WATERBODY: HOTHAM INLET

SECS. 25&30; T016N; RS. 015&016W
MERIDIAN: KATEEL RIVER
USGS QUADRANGLE KOTZEBUE D-1 SE
LAT: 66.76226' LONG: -162.01474'

PROJECT SITE TOPO

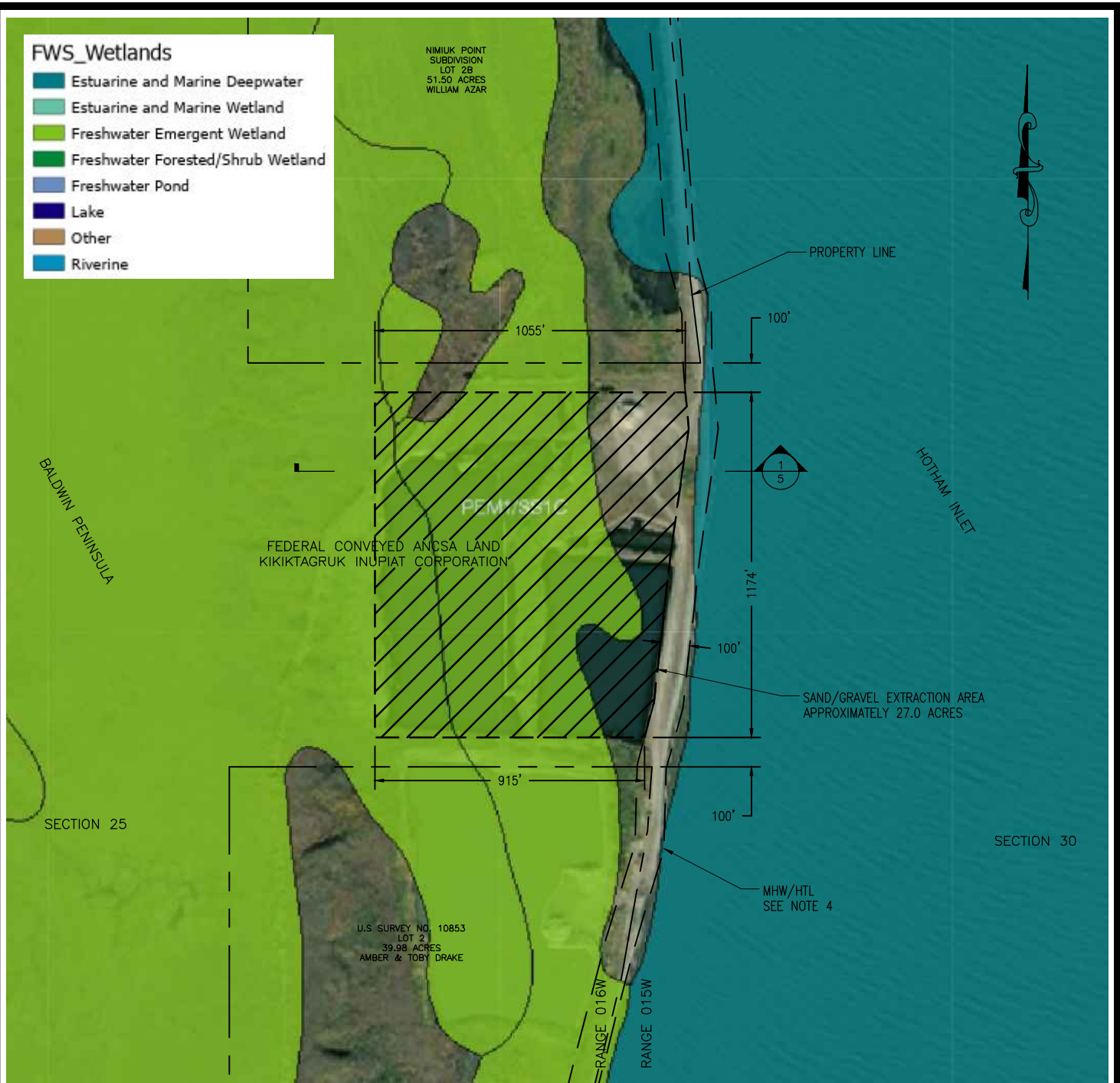
10/7/2024

SHEET 3 OF 6

FWS_Wetlands

- Estuarine and Marine Deepwater
- Estuarine and Marine Wetland
- Freshwater Emergent Wetland
- Freshwater Forested/Shrub Wetland
- Freshwater Pond
- Lake
- Other
- Riverine

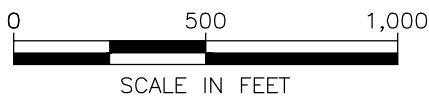
NIMIUK POINT
SUBDIVISION
LOT 2B
51.50 ACRES
WILLIAM AZAR



WETLANDS National Wetlands Inventory

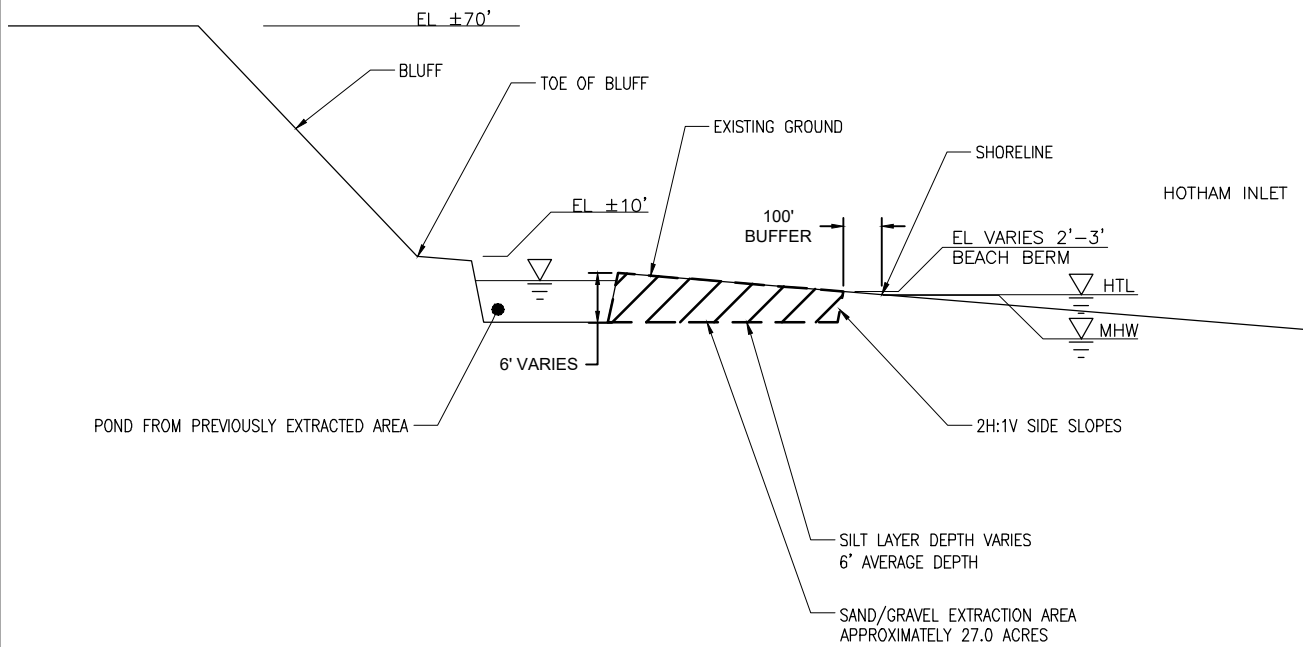
NOTES:

1. IMAGE SOURCE: WEBSITE
<https://www.fws.gov/program/national-wetlands-inventory/wetlands-mapper> OBTAINED ON 7 OCTOBER 2024. IMAGE IS NOT GEO-REFERENCED.
2. PROPERTY BOUNDARY INFORMATION FROM PLAT No. 98-8 DATED 23 JUNE 1998 AND U.S. SURVEY 10853 DATED 14 DECEMBER 1994.
3. TIDAL INFORMATION FROM NOAA STATION 9491094, RED DOG DOCK, ALASKA (NAVD88).
 - 3.1. HTL (HIGH TIDE LINE) = 1.1'
 - 3.2. MHW (MEAN HIGH WATER) = 0.8'
 - 3.3. MLLW (MEAN LOWER-LOW WATER) = 0.0'
4. TOPOGRAPHIC SURVEY HAS NOT BEEN PERFORMED FOR PROJECT AREA THEREFORE HTL AND MHW LINE ARE APPROXIMATED BASED ON WATERS EDGE FROM IMAGE. A SURVEY WILL BE PERFORMED PRIOR TO START OF EXTRACTION TO DETERMINE MHW, HTL, AND PROPERTY LINE LOCATIONS.
5. EXTRACTED MATERIALS WILL BE STOCKPILED IN UPLANDS.
6. CONTRACTOR STAGING OF EQUIPMENT AND MATERIALS IN UPLANDS.



NIMIUK POINT SAND & GRAVEL
GRAVEL EXTRACTION KOTZEBUE, ALASKA
WATERBODY: HOTHAM INLET
SECS. 25&30; T016N; RS. 015&016W MERIDIAN: KATEEL RIVER USGS QUADRANGLE KOTZEBUE D-1 SE LAT: 66.76226° LONG: -162.01474°
WETLANDS
10/7/2024 SHEET 4 OF 6

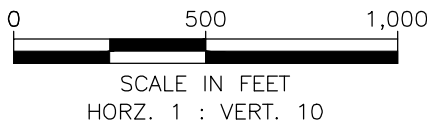
C:\Users\slw\OneDrive\Project Files\2023\KIC Material Source Permitting\Nimuk Point\02_CADD\KIC - USACE Permit 5.dwg
 Plotted 10/7/2024 9:39 PM by Steven Lewis



1 SITE SECTION

NOTES:

1. TIDAL INFORMATION FROM NOAA STATION 9491094, RED DOG DOCK, ALASKA (NAVD88).
 - 1.1. HTL (HIGH TIDE LINE) = 1.1'
 - 1.2. MHW (MEAN HIGH WATER) = 0.8'
 - 1.3. MLLW (MEAN LOWER-LOW WATER) = 0.0'
2. TOPOGRAPHIC SURVEY HAS NOT BEEN PERFORMED FOR PROJECT AREA. HTL AND MHW LINES ARE APPROXIMATE.



NIMIUK POINT SAND & GRAVEL
GRAVEL EXTRACTION KOTZEBUE, ALASKA
WATERBODY: HOTHAM INLET
SECS. 25&30; T016N; RS. 015&016W MERIDIAN: KATEEL RIVER USGS QUADRANGLE KOTZEBUE D-1 SE LAT: 66.76226° LONG: -162.01474°
SITE SECTION
10/7/2024 SHEET 5 OF 6

SECTION 24

SECTION 19

NIMIUK POINT
SUBDIVISION
LOT 2B
51.50 ACRES
WILLIAM AZAR

BALDWIN PENINSULA

FEDERAL CONVEYED ANCSA LAND
KIKIKTAGRUK INUPIAT CORPORATION

EXTRACTION CELL 2
APPROX. 7.35 ACRES

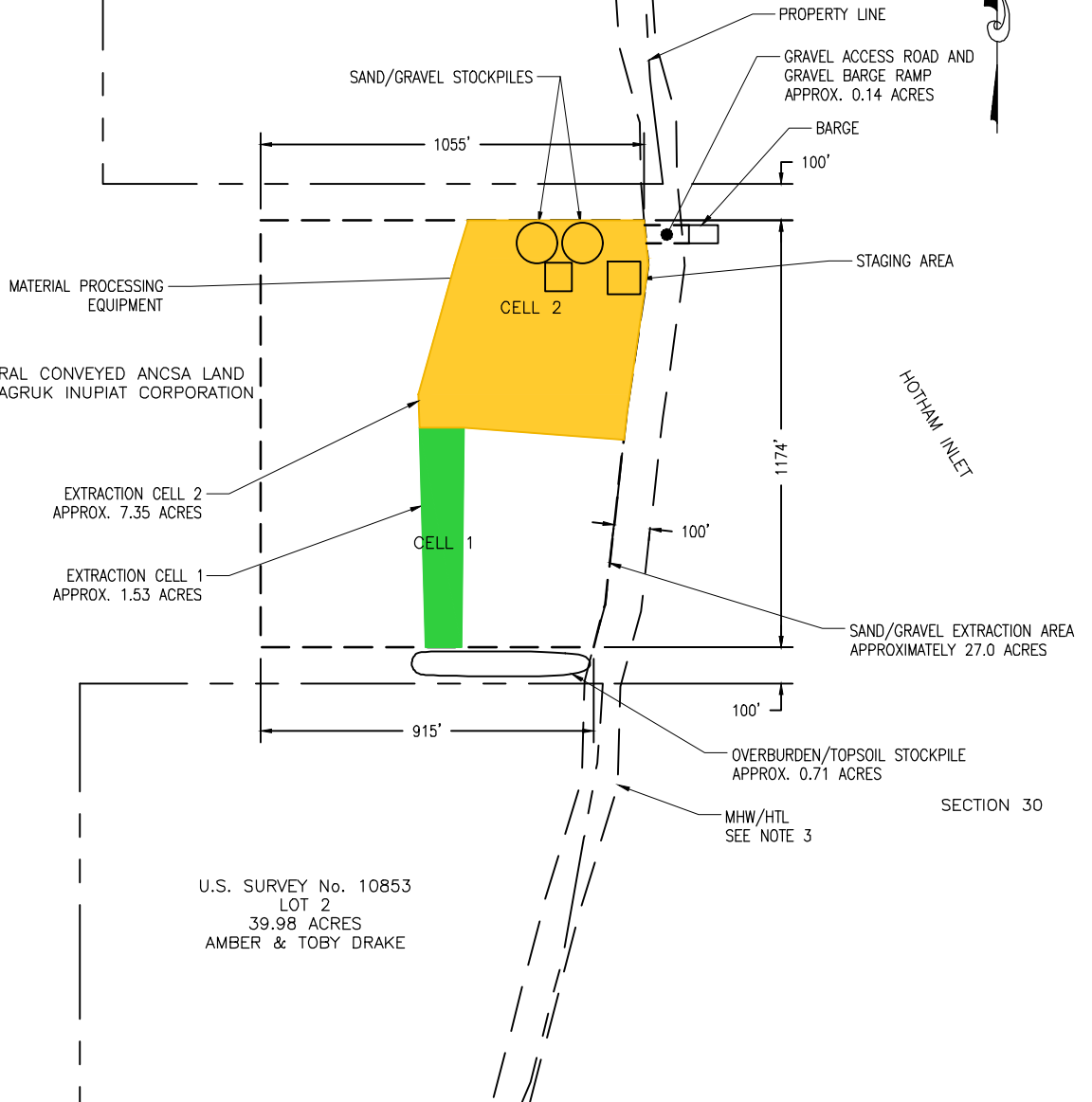
EXTRACTION CELL 1
APPROX. 1.53 ACRES

SECTION 25

U.S. SURVEY No. 10853
LOT 2
39.98 ACRES
AMBER & TOBY DRAKE

HOTHAM INLET

SECTION 30



DEVELOPMENT SITE

NOTES:

1. PROPERTY BOUNDARY INFORMATION FROM PLAT No. 98-8 DATED 23 JUNE 1998 AND U.S. SURVEY 10853 DATED 14 DECEMBER 1994.
2. TIDAL INFORMATION FROM NOAA STATION 9491094, RED DOG DOCK, ALASKA (NAVD88).
 - 2.1. HTL (HIGH TIDE LINE) = 1.1'
 - 2.2. MHW (MEAN HIGH WATER) = 0.8'
 - 2.3. MLLW (MEAN LOWER-LOW WATER) = 0.0'
3. TOPOGRAPHIC SURVEY HAS NOT BEEN PERFORMED FOR PROJECT AREA THEREFORE HTL AND MHW LINE ARE APPROXIMATED BASED ON WATERS EDGE FROM IMAGE. A SURVEY WILL BE PERFORMED PRIOR TO START OF EXTRACTION TO DETERMINE MHW, HTL, AND PROPERTY LINE LOCATIONS.



NIMIUK POINT SAND & GRAVEL	
GRAVEL EXTRACTION KOTZEBUE, ALASKA	
WATERBODY: HOTHAM INLET	
SECS. 25&30; T016N; RS. 015&016W MERIDIAN: KATEEL RIVER USGS QUADRANGLE KOTZEBUE D-1 SE LAT: 66.76226° LONG: -162.01474°	
DEVELOPMENT PLAN	
10/7/2024	SHEET 6 OF 6