

For Office Use Only	ADNR File No: <u>ADL 234665</u>	DATE STAMP: Rcvd: 4/30/25
	ADF&G No: _____	11/05/2025 12/5/2025



## Alaska Aquatic Farm Program Joint Agency Application – Part II

You are encouraged to submit a completed application as early in the filing period as possible. The current application form must be used and properly completed before state agencies can process your project. **An incomplete application will not be processed.** A checklist is included to assist you in meeting this requirement. The best way to facilitate the review of your application is to schedule a pre-application meeting with ADNR and ADF&G to discuss your project. The original application including attachments and all required fees must be delivered and present in the Alaska Department of Natural Resources office no later than April 30<sup>th</sup>.

The project location is in:     Southeast Alaska                       Southcentral Alaska

Kodiak     Alaska Peninsula                       Other

This project is:                       First Time Application     Renewal Application

### A. APPLICANT INFORMATION

City Of Ouzinkie/Spruce Island Farms  
Name \_\_\_\_\_

Business Name (If Applicable)  
Box 109  
Mailing Address (PO Box or Street Address)  
Ouzinkie    AK                      99615  
City    State                      Zip  
mayor.jackson@ouzinkie.city  
Email Address  
\_\_\_\_\_  
Home/Office Phone                      Cell Phone

Elijah Jackson - Mayor  
Contact Name  
\_\_\_\_\_  
Contact Phone Number  
Vickie Novak, city council member  
Business Partner Name (If applicable)  
\_\_\_\_\_  
Business Partner Email Address (If applicable)  
\_\_\_\_\_  
Business Partner Phone (If applicable)

### B. PROJECT DESCRIPTION

**In the space provided below**, please provide a general description of your proposed aquatic farm site and operations. This should be a narrative of your proposal that includes where your project will be located, overall size including any hardening area, all species you intend to culture, type of farm gear, equipment, support facilities, and associated housing to be used including size, number, and construction materials. Your narrative should match the rest of the application information you provide. If additional space is necessary, **please attach a separate document labeled "PROJECT DESCRIPTION"**. **Example information for project narrative can be found in Attachment I.**

PROJECT DESCRIPTION

DATE SUBMITTED: \_\_\_\_\_

**Company Name**

City of Ouzinkie/Spruce Island Farm

**Site Location** *[Include water body, distance from nearest community, any landmarks, general region of Alaska, and whether on state tidal and/or submerged lands or private. Provide enough information to understand where it is located.]*

The proposed oyster farm lease is 10.5 nautical miles from the city of Ouzinkie on the north side of Spruce Island. The farm is located in a lagoon called Big Lagoon adjacent to Knee Bay. Ouzinkie is located on the north end of Kodiak Island in central Alaska. The lands surrounding Big Lagoon are entirely owned by the Quzinkie Native Corporation.

**Site Dimensions, Acres for Each Parcel**

The proposed lease is 100 ft wide and 430 ft long for a total of 1 acre.

**Total Acres of All Parcels**

1 acre

**Species You Intend to Farm** *[Include scientific and common species name]*

Pacific Oysters, *Crassostrea gigas*

**Culture Method** *[Describe operation activities to be done onsite such as outplanting of seedstock, husbandry techniques to be used (culling, sorting, washing, etc.), maintenance and monitoring activities, management of fouling organisms and incidental species, predator control measures, and schedule of activities such as timing of outplanting seeded lines or adding seedstock into trays, etc. Describe what methods you plan to use based on the definition in [5 AAC 41.400\(6\)](#). "Culture" means to use or the use of methods to manipulate the biology and the physical habitat of a desired species to optimize survival, density, growth rates, uniformity of size, and use of the available habitat, and to efficiently produce a product suitable for a commercial market.]*

After approval of the lease we will start a yearly rotation of sourcing oyster seed in the early spring then outplanting. A 28 ft x 10 ft work boat will be used to maintain the farm. The work boat will be moored on the east side of the lease when not in use April-October and will be stored in the Ouzinkie harbor November-March. The work boat does not have sleeping areas, bathroom, galley, plumbing/water, or housing for crew. The work boat has at most 20 gallons of gasoline onboard at any time in the fuel tank. All harvesting, sorting, tumbling and cleaning will be done on site from the work boat. During peak season from May till September oysters will be sorted once a month, tumbled bi-weekly and cleaned every week. During the off season October through April bi-monthly visits will be conducted to maintain the farm. Cleaning of the trays involves lifting the stacks out of the water and using a pressure washer to wash away any fouling. The baskets will then be lowered back into the water and the process repeated. Sorting will be done with a commercial tumbler and similar sized oysters will be grown together.

**Culture Gear and Equipment (Type, Size, Number, Configuration, Material, and Anchoring System)** *[If more than one parcel, indicate what parcel specific gear will be located on. If more than one species, indicate gear to be used for each. Gear includes any structure that holds or protects the organism like trays, tiers of lantern nets, Vexar bags, OysterGro system, grow-out submerged longlines, predator netting, longlines, buoys, depth control systems, etc. Include approximate installation schedule, or if and what gear will remain installed year-round etc.]*

We will grow the oysters using a suspended longline method using high density stackable plastic trays. The trays have either 10mm holes or 5mm holes depending on the size of the oyster being grown. A single line made of 1 inch poly will form a backbone line 270 ft long that stacks of up to ten trays will suspend from three feet below the surface every five feet for a total of 54 stacks per line, 540 trays per line. and 2,700 ft of cultivation longline A2 polyform buoys will be used as flotation for each of the stacks for a farm total of 540. 80 ft of anchor line to a 300 lbs danforth anchor will secure each end of the longlines for a total of 20 anchors and 1,600 ft of anchor line. A4 buoys will mark the end of each longline for a total of 20. The gear will be installed in early spring as the farm is gradually expanded to full capacity and stay in place year round. The workboat will be moored from the center longline on the east side of the farm.

**Seed Acquisition Plan (Commercially produced and/or wildstock)** [*Commercially produced juveniles or seed stock must be obtained from an approved seed source. Do you intend to collect wildstock juveniles or natural set organisms for direct culture on your proposed site? Yes/No. If yes, describe collection methods (applicable for indigenous species: i.e. mussels, scallops, abalone, natural set aquatic plants, etc. This does not refer to broodstock collection on behalf of hatcheries for propagation. If increasing number of acquisitions per year, indicate projected amounts per year. Aquatic plant species can be combined into total feet of line per year.)*]

12mm oyster seed will be sourced from an approved source.

**Harvest Equipment and Method** [*Describe harvest equipment and methods to be used, activities to be done onsite, and schedule of harvest of aquatic farm product. If more than one species, include harvest information for each species or group of species like macroalgae if the harvest information is the same.*]

A 28 ft x 10 ft work boat with gantry and electric winch will be used to lift the stacked trays out of the water. A commercial tumbler will be used to sort the oysters and market ready oysters will be shipped to an approved packing facility in the City of Ouzinkie. The timing for harvest will vary depending on growth rates and demand. The natural protection of the lagoon means oysters could be harvested year round with little concern for weather.

**Support Facilities (Type, Size, Number, Configuration, Material, and Anchoring)** [*Support facilities include caretaker facility, storage rafts, work rafts, processing rafts, etc.*]

A 28 ft x 10 ft workboat will be used to provide all support facilities. The work boat will be moored on the east side of the lease when not in use April–October and will be stored in the Ouzinkie harbor November–March. The work boat does not have sleeping areas, bathroom, galley, plumbing/water, or housing for crew. The work boat has at most 20 gallons of gasoline onboard at any time in the fuel tank. All harvesting, sorting, tumbling and cleaning will be done on site from the work boat. Market ready oysters will be taken to a approved packaging facility.

## Project Description

The proposed 1 acre Spruce Island farm site is located 10.5 nautical miles from the Ouzinkie harbor on the north side of Spruce Island in Big Lagoon. The lagoon is accessible from the ocean through a small inlet during all tide cycles. [REDACTED]

[REDACTED] Attachments 1-3)

The proposed aquatic farm site will encompass a growing area of 100 ft x 430 ft (1 acre) for suspended culture of Pacific oysters using a hanging tray system. The farm site will consist of 10 longlines 430 ft long made of 1in. Poly line, 80 ft of anchor line on each end and 270 ft in the center for suspended culture. The longlines will be spaced 10 ft apart with 300 lbs danforth anchors used on the ends to secure each longline. A total of 20 danforth anchors will be used. Polyform A4 (20 total) buoys will mark the end of each of the longlines. Hanging tray systems stacked 10 tall will be suspended 3 ft below the surface with a A2 polyform buoy (540 total) on top spaced every 5 ft for a total of 54 hanging trays along each longline. The hanging trays are made of hard UV resistant plastic with holes either 10mm or 5mm depending on the size of the oyster. 150 adult oysters can be grown in each tray. A total of 540 trays can be suspended along each longline (5,400 total on the farm) for a total production of 81,000 oysters per longline and a total farm production of 810,000 oysters. All gear will remain in the water year round.

A 28 ft x 10 ft work boat will be used to maintain the farm. All harvesting, sorting, tumbling and cleaning will be done on site from the work boat. During peak season from May till September oysters will be sorted once a month, tumbled bi-weekly and cleaned every week. During the off season October through April bi-monthly visits will be conducted to maintain the farm. The workboat will be moored to the east side for farm along the middle growline. The natural geography of the lagoon provides the perfect moorage from any kind of weather event. The farm site will be accessed from the ocean via a small boat or from the near shore by inflatable craft.

Seed will be sourced from a ADF&G approved source.

**Access to and from Site** [Include nearest community, transportation type used and how many times traversing back and forth]

The farm can be accessed from two locations. The first is by small boat through an inlet from Knee Bay. There is a deep enough channel that allows small boat access at any tide level. The majority of the access will be from the beach near the farm site via a small inflatable raft [REDACTED]

[REDACTED] During peak times May through October the farm will be visited several times a week. During the off season the farm will be visited at latest bi-monthly to make sure the gear is safe.

**Storage Location of Equipment and Gear When Not in Use** [Include whether on private lands and nearest community]

The gear and equipment when not in use will be stored on Quzinkie Native Corporation land in the City of Quzinkie.

---

**C. PROJECT OPERATION PLAN**

**1. How will support facilities, culture gear and anchoring systems be maintained?**

- a. How often, in days per month, do you intend to monitor your site for things such as adequate anchoring, disease, exotic species settlement, fouling, gear drift, snow load, wind damage, vandalism, etc.?

Growing season <sup>5</sup> \_\_\_\_\_ (days/month) Off months <sup>7</sup> \_\_\_\_\_ (days/month)

- b. How will you keep the gear and shellfish free of fouling organisms (hot-dip, air dry, pressure washing, etc.)? The gear will be lifted out of the water and sprayed with a pressure washer atleast twice a month.

- c. How will you manage reduction of competing species over the course of operations (relocate sea stars, grow-out cages, or other possible protection from competing species)?

The oysters will be grown off the bottom. Any competing species found in the cages will be removed and returned to the water.

- d. If you intend to use predator netting, how long will you keep netting over your product?

<sup>0</sup> \_\_\_\_\_ (months)

- e. If using predator netting, how will you minimize impacts on non-target species, including seabirds, seals, sealions, walrus and whales?

NA

---

**2. Projected Harvest Rotation Consistent with Life History**

- a. How often do you intend to harvest your product by species?

Harvest will depend on the growth rates of the oysters but could be harvested year around.

- b. Do you plan on utilizing density manipulation by culling or redistribution?

Oysters will be sorted twice a season with simular sized oysters placed together.

- c. What techniques will be used to optimize growth or condition of product?  
Regular cleaning of the cages and sorting of oysters will help optimize growth.

**3. Acquisition of hatchery or wild seed**

- a. Will you use a certified or approved shellfish seed source(s)? Yes  No
- b. Will you use an Alaska kelp hatchery? Yes  No
- c. How do you intend to collect wild seed? (Applicable for indigenous species: i.e. clams, natural set kelp, invertebrates, etc.)  
NA

- 4. Describe how operation of the aquatic farm will improve the productivity of species intended for culture not covered by the previous questions (examples: predator exclusion, reduction of competing species, density manipulation by culling/redistribution, importing natural or hatchery seed, program harvest to optimize growth/condition and habitat improvement)?** \_\_\_\_\_  
\_\_\_\_\_. Regular cleaning of the oyster cages and sorting of the oysters by size cohort will optimize growth, as mentioned in the previous questions.

**D. PROJECT LOCATION**

**1. Coordinates**

Please provide latitude and longitude coordinates for each corner of each parcel at the proposed farm site. Identify each parcel to be used. For example, Parcel 1 - growing area, Parcel 2 - hardening area, etc. Latitude and longitude coordinates must be in **NAD83 datum using degrees and decimal minutes format to the nearest .001 minute (Example: Longitude -133° 17.345)**, obtained using a Global Positioning System (GPS). If you are applying for more than three parcels or your proposed parcels have other than four corners, please provide those coordinates in your project description or on a separate sheet.

<b>Parcel 1:</b> 1 acre (e.g. Grow-out Area)	NE Corner No. 1: Latitude	57° 56.211	Longitude	152° 25.600
	SE Corner No. 2: Latitude	57° 56.196	Longitude	152° 25.601
	SW Corner No. 3: Latitude	57° 56.195	Longitude	152° 25.734
	NW Corner No. 4: Latitude	57° 56.212	Longitude	152° 25.734
<b>Parcel 2:</b>  (e.g. Hardening Area)	NE Corner No. 1: Latitude	_____	Longitude	_____
	SE Corner No. 2: Latitude	_____	Longitude	_____
	SW Corner No. 3: Latitude	_____	Longitude	_____
	NW Corner No. 4: Latitude	_____	Longitude	_____
<b>Parcel 3:</b>  (e.g. Support Facility Area)	NE Corner No. 1: Latitude	_____	Longitude	_____
	SE Corner No. 2: Latitude	_____	Longitude	_____
	SW Corner No. 3: Latitude	_____	Longitude	_____
	NW Corner No. 4: Latitude	_____	Longitude	_____

## 2. Site Size

Please use the following formula to compute area. For more complex parcel shapes, you may wish to use the Measure Area tool in Alaska Mapper found at <https://mapper.dnr.alaska.gov/>. If you are applying for more than three parcels or your parcels are not rectangular, you may provide this information in the project description or on a separate sheet.

1. To compute the total area (sq. ft), multiply the width (ft) by the length (ft) of Parcel 1. The outside length and width of the Parcel **must include your anchors and anchoring system plus any scope.**
2. Divide the area (sq. ft) of Parcel 1 by 43,560, to convert the area from sq. ft to acres.
3. Repeat for each separate Parcel of your proposed farm site.
4. Add the acreage of each Parcel to get the total tideland acreage for your proposed farm site.
5. Write the Total Acreage on the line where indicated.
6. Note that the number of acres must correspond to your farm site maps and drawings.

Parcel 1:  $\frac{100 \text{ feet (Width of Parcel 1)} \times 430 \text{ feet (Length of Parcel 1)}}{43,560} = \frac{43,000 \text{ square feet (Area)}}{43,560} = 1 \text{ (Acres)}$

Parcel 2: \_\_\_\_\_ feet (Width of Parcel 2) (x) \_\_\_\_\_ feet (Length of Parcel 2) = \_\_\_\_\_ square feet (Area)  $\div$  43,560 = \_\_\_\_\_ (Acres)

Parcel 3: \_\_\_\_\_ feet (Width of Parcel 3) (x) \_\_\_\_\_ feet (Length of Parcel 3) = \_\_\_\_\_ square feet (Area)  $\div$  43,560 = \_\_\_\_\_ (Acres)

How many total acres of state-owned tidelands are you applying for (add all parcel acres): \_\_\_\_\_  
(Total Acreage)

If you are also applying for state owned uplands for support facilities, how many total upland acres? \_\_\_\_\_  
(Total Upland Acreage)

## 3. Maps and Diagrams

Provide copies of maps and diagrams including general and detailed location maps, site plan map (an overview), cross-sectional diagram and detailed drawings. If the project has multiple parcels, you must provide maps of each parcel. Copies of the maps and drawings should be no larger than 8½" x 11" (standard letter size). Examples are provided at the end of the application.

A list of mapping resources is provided below:

[Alaska Mapper](https://mapper.dnr.alaska.gov/)

<https://mapper.dnr.alaska.gov/>

[Alaska Ocean Observing System Mariculture Map](https://mariculture.portal.aos.org/)

<https://mariculture.portal.aos.org/>

[NOAA Nautical Charts](http://www.charts.noaa.gov)

[www.charts.noaa.gov](http://www.charts.noaa.gov)

[ShoreZone Mapping System](https://www.fisheries.noaa.gov/alaska/habitat-conservation/alaska-shorezone)

<https://www.fisheries.noaa.gov/alaska/habitat-conservation/alaska-shorezone>

[Catalog of Anadromous Streams](https://www.adfg.alaska.gov/sf/sarr/awc/)

<https://www.adfg.alaska.gov/sf/sarr/awc/>

**\*Be sure to include a legend box on all maps and diagrams you provide with your application with the following information:**

### FORMATTING

Figure No. and Title
Applicant Name (Business Name)
Waterbody
Area/Region
Today's Date

### LEGEND BOX EXAMPLE

Figure 1 Detailed Location Map
Alaska's Best Oysters
Jerryton Bay
East of Prince of Wales Island, Southeast AK
March 30, 2012

- a. **General Location Map** - This map is a larger scaled map showing larger surrounding area with less detail (See Attachment 2, Figure 1). Use a USGS Topographic quadrangle map (scale: 1" = one mile (1:63,360)) and label it "Figure 1" and show the following information:
- USGS Map Name (e.g. Craig B-4) \_\_\_\_\_
  - General location of the farm site
  - Distance (in nautical miles), and direction (arrow) of the site from the nearest community
  - A directional arrow identifying North
  - Scale
  - Legend box (example on previous page)
- b. **Detailed Location Map** - This map is a smaller scaled map showing more detail (See Attachment 2, Figure 2). Use a National Oceanic and Atmospheric Administration (NOAA) navigational chart and label it "Figure 2" and show the following information:
- NOAA Chart No. \_\_\_\_\_
  - Boundaries of each farm area parcel and clearly label all corners (NE, SE, SW, and NW)
  - Directional arrow identifying North
  - Scale on map
  - Legend box (example on previous page)
  - If uplands area is proposed:
    - Location and type of use (e.g. housing, storage shed, etc.)
- c. **Site Plan Map** - Draw an overhead view of the farm area parcel(s) and surrounding area (See Attachment 2, Figures 3 and 4). Label it "Figure 3" and show the following information:
- All in-water structures and anchoring systems (All anchoring systems and anchor scope have to be inside the farm parcel boundary)
  - All equipment and support facilities with dimensions (in feet)
  - Areas of eelgrass beds (intertidal zone)
  - Areas of kelp beds (subtidal zone)
  - Fuel and chemical storage
  - Nearby anadromous streams (fish)
  - Distance between all facilities, gear or equipment on the proposed farm site
  - Legend box (example on previous page)
- d. **Cross-Sectional Diagram(s)** - Provide Cross-Sectional Diagram(s) of all support facilities, equipment, and gear showing their placement and anchoring systems (See Attachment 2, Figure 5). Note that more than one diagram may be required. Label it "Figure 5" (and so on) and show the following information:
- Distance from bottom of gear to ocean bottom at mean lower low tide
  - If suspended or on-bottom culture:
    - water depth at low tide
    - major on-bottom physical features (sand, mud, silt, clay, bedrock, cobble, shells, rockweed, algae/seaweed) and contours
  - Dimensions of the anchoring configuration and poundage
  - Scale
  - Legend box (example on previous page)
- e. **Detailed Drawing(s)** - Provide Detailed Drawing(s) of all support facilities, equipment, and gear (See Attachment 2, Figure 5). Note that more than one diagram may be required. Label and show the following information:
- Draw and label the dimensions (length/width/height) of all proposed gear and equipment
  - Legend box (example on previous page)

**E. SITE SUITABILITY – PHYSICAL AND BIOLOGICAL CHARACTERISTICS**

1. Is the proposed location protected from severe storms, strong currents, winter ice, etc. and if not, is the farm designed for extremes?  
Yes  No  Additional Information \_\_\_\_\_
  2. Does your site have suitable water exchange for species of culture? Yes  No
  3. Are water temperatures suitable for proposed species of culture? Yes  No   
(Note: temperatures > 60° and < 31° F may pose problems such as Vibrio bacteria contamination or icing.)
  4. Is there any significant freshwater influence near the farm? Yes  No   
(Note: freshwater may impact shellfish growth and/or survival or carry fecal coliform or other pollutants)
  5. Is the salinity concentration at your proposed farm site appropriate for species of culture? Yes  No
  6. Have you monitored the phytoplankton (microalgae) abundance and types during the main grow-out season?  
Yes  No  If yes, findings: \_\_\_\_\_  
(Note: shellfish depend on phytoplankton for food, but harmful phytoplankton can prevent harvest/sales.)
  7. Have you monitored suspended sediments or turbidity (e.g. water clarity/transparency using a secchi disc) at your proposed farm site? Yes  No  If yes, findings: \_\_\_\_\_  
(Note: This is used as rough check for microalgae densities, run-off, and glacial silt (milky- grey color).)
  8. For on-bottom culture, are the bottom characteristics suitable for the proposed species? Yes  No   
Substrate and vegetation? NA
  9. For on-bottom culture, how will bottom characteristics be made suitable if not already?  
NA

---

  10. For suspended culture, is the water depth sufficient to prevent gear from grounding and impacting the benthos under floating structures? Depth of Gear (in ft): 3ft subsurface-8.8ft bottom of stack Water depth at low tide (in ft): 30
  11. Is your proposed site more than 300 ft from an anadromous fish stream? Yes  No
  12. Are you aware of any eelgrass or kelp beds on or near your proposed farm site? Yes  No  If yes, describe:  
There is eelgrass reported in the lagoon on the AOOS Mariculture Mapper. It is listed as "patchy" and we have noted any within 200 yards of the proposed farm location during site visits. The eelgrass elsewhere in the lagoon is in the intertidal shorezone area and not in any locations that would be impacted by this project. The farm structures will be located >40-150 ft from the intertidal zone.
  13. For farming using on-bottom culture methods, is there insignificant wild stock of the species to be cultured on the proposed farm site? (Reference 5 AAC 41.235) Yes  No  Additional information  
NA
  14. Are there existing uses near your proposed farm site such as boat traffic, existing fisheries or a sensitive area as listed in section C of Part 1, etc. that may be impacted by the farm operation? Yes  No  If yes, describe how your farm can be sited to mitigate conflicting uses?
-

**F. KNOWN EXISTING USES**

Please check the boxes below, to indicate existing human and/or wildlife uses observed or known to exist at or within one mile of the proposed farm site. Indicate the locations of these existing uses on the Site Plan Map if specific locations are known (refer to page 8, Section 3c).

- |  |  |
|--|--|
| <input type="checkbox"/> mining                                  | <input type="checkbox"/> other aquatic farm projects                           |
| <input type="checkbox"/> timber harvest or transfer              | <input type="checkbox"/> commercial fishing                                    |
| <input type="checkbox"/> residential use                         | <input type="checkbox"/> sport fishing   |
| <input type="checkbox"/> harbor development                      | <input type="checkbox"/> salmon hatcheries                                     |
| <input type="checkbox"/> sheltered boat anchorage                | <input type="checkbox"/> hunting   |
| <input type="checkbox"/> seaplane landing                        | <input type="checkbox"/> seafood processing plant                              |
| <input type="checkbox"/> commercial lodges                       | <input type="checkbox"/> upland access route(s) areas, bear trails, etc.       |
| <input type="checkbox"/> sightseeing                             | <input type="checkbox"/> wildlife use, (e.g. shorebirds, sea mammal haul-outs) |
| <input checked="" type="checkbox"/> recreation                   | <input type="checkbox"/> subsistence; list species and frequency               |
| <input type="checkbox"/> tourism                                 |  |
| <input type="checkbox"/> historical/cultural/archaeological site |  |
- navigational channels: \_\_\_\_\_
- other; list \_\_\_\_\_

**G. SUPPORT FACILITIES**

- 1. Personnel/Caretaker Housing (additional annual fees apply)**  
Are you proposing any personnel/caretaker housing? Yes  No

If yes, the proposed size will be: \_\_\_\_\_ (Width) \_\_\_\_\_ (Length) \_\_\_\_\_ (Height)  
Please attach diagrams/drawings with labels clearly showing the Personnel/Caretaker housing.

Note: you may stay a maximum of 14 consecutive days at your site on state-owned uplands or tidelands without applying for personnel/caretaker housing.
- 2. Enclosed Processing Facility**  
Are you proposing any enclosed processing facility? Yes  No

If yes, the proposed size will be: \_\_\_\_\_ (Width) \_\_\_\_\_ (Length) \_\_\_\_\_ (Height)  
Please be sure the processing facilities are included in the maps and diagrams described in the Maps and Diagrams section above.
- 3. Upland Property**  
Do you currently own or lease upland property adjacent to, or near, the proposed farm site that you plan to use in conjunction with your proposal? Yes  No  If yes, attach a copy of ownership deed or lease.

If you are the adjacent upland owner, are you applying for a preference right under 11 AAC 63.040(f)?  
Yes  No

**H. CITY AND BOROUGH CONTACTS**

1. City/Borough Authorization

If you are applying within a city or borough, please contact the appropriate authority as additional authorizations may be required from them. Please provide the name, address, and telephone number of the person(s) you contacted and list any required authorizations.

CITY/BOROUGH	PHONE	CONTACTED?
<input type="checkbox"/> City of Cordova .....	907-424-6220	Yes <input type="checkbox"/> No <input type="checkbox"/>
<input type="checkbox"/> City of Klawock .....	907-755-2261	Yes <input type="checkbox"/> No <input type="checkbox"/>
<input type="checkbox"/> City and Borough of Wrangel .....	907-874-2381	Yes <input type="checkbox"/> No <input type="checkbox"/>
<input type="checkbox"/> City of Craig – Planning & Zoning .....	907-826-3275	Yes <input type="checkbox"/> No <input type="checkbox"/>
<input type="checkbox"/> City and Borough of Juneau – Permit Center .....	907-586-5252	Yes <input type="checkbox"/> No <input type="checkbox"/>
<input type="checkbox"/> City and Borough of Sitka – Planning & Community Development .....	907-747-1814	Yes <input type="checkbox"/> No <input type="checkbox"/>
<input type="checkbox"/> City of Thorne Bay .....	907-828-3380	Yes <input type="checkbox"/> No <input type="checkbox"/>
<input type="checkbox"/> City and Borough of Yakutat – Planning & Zoning Commission .....	907-784-3323	Yes <input type="checkbox"/> No <input type="checkbox"/>
<input type="checkbox"/> Kenai Peninsula Borough – Land Management Division .....	907-714-2205	Yes <input type="checkbox"/> No <input type="checkbox"/>
<input checked="" type="checkbox"/> Kodiak Island Borough – Community Development .....	907-486-9363	Yes <input type="checkbox"/> No <input checked="" type="checkbox"/>
<input type="checkbox"/> Lake and Peninsula Borough – Community Development .....	907-246-3421	Yes <input type="checkbox"/> No <input type="checkbox"/>
<input type="checkbox"/> Aleutians East Borough – Permitting .....	907-383-2699	Yes <input type="checkbox"/> No <input type="checkbox"/>
<input type="checkbox"/> Ketchikan Gateway Borough – Planning & Community Development .....	907-228-6610	Yes <input type="checkbox"/> No <input type="checkbox"/>
<input type="checkbox"/> Haines Borough .....	907-766-6401	Yes <input type="checkbox"/> No <input type="checkbox"/>

Type of Authorization required by City or Borough: \_\_\_\_\_

**I. WATER QUALITY INFORMATION – Department of Environmental Conservation**

1. Do you plan to use a boat on your farm site? Yes  No  If yes, indicate the type of marine sanitation device. Open skiff does not have marine sanitation.

2. If you plan to have personnel housing or caretaker facilities:  
 Will wastewater be discharged from these facilities? Yes  No  If yes, what are the daily maximum and average discharge volumes? Maximum \_\_\_\_\_ Average \_\_\_\_\_

3. Were there any sources of past pollution at the site, such as a shore-based seafood processor, log transfer facility, industrial facility, oil spill contamination, or town or village? Yes  No  Unknown

If yes, identify:

a. The type of previous use (e.g. mine, village, seafood processor, oil spill).

b. The last known date of use. \_\_\_\_\_

c. The distance from site previously used to your proposed site.

4. Are you aware of any current potential sources of human or industrial pollution in the area? (e.g. sewage outfalls, oil contamination, industrial transfer facilities upland operations, boar harbors, etc.)

Yes  No  If yes, describe:

- a. The type of discharge(s).
  
  
  
  
  
  
  
  
  
  
- b. The location and distance from your site.
  
  
  
  
  
  
  
  
  
  
- c. The name of the discharger(s), if known.

5. Are you aware of any other planned development in the general area of your proposed site?

Yes  No  If yes, describe the planned development.

6. ADEC may request that you provide a map for certain projects to show the following information:

- a. areas of wastewater disposal systems, including both sewage and grey water discharge points (grey water means domestic wastewater from laundry, kitchen, etc., which does not contain human waste)
  - b. location of drinking water, including drinking water wells or other drinking water system sources (fresh water and salt water), within 200 feet of any proposed or existing wastewater disposal systems
  - c. location of solid waste storage and disposal sites (Note: you are encouraged to use existing permitted sites for the disposal of solid wastes. If there are not any existing permitted disposal sites in the area and they are necessary in your operation, you must contact the ADEC for authorization)
  - d. areas used for fuel and chemical storage
-

**J. APPLICATION SIGNATURE BLOCK**

**AQUATIC FARM APPLICATION SIGNATURE AND  
PROGRAM CERTIFICATION STATEMENT**

The information contained in this aquatic farm application is true and complete to the best of my knowledge and I certify that the proposed activity complies with and will be conducted in a manner consistent with all State and Federal Agency policies and regulations. I understand that modifications to the proposed activity may require additional review and that I may need to apply for additional authorizations.

This certification statement does not provide authorization necessary to sell my product. I understand I must separately apply for and hold a Growing Area Certification and a Shellfish Harvester or Shellfish Dealer Permit from the Department of Environmental Conservation.

Printed Name Elijah Jackson

Signature of Applicant [Signature] Date 4/30/25

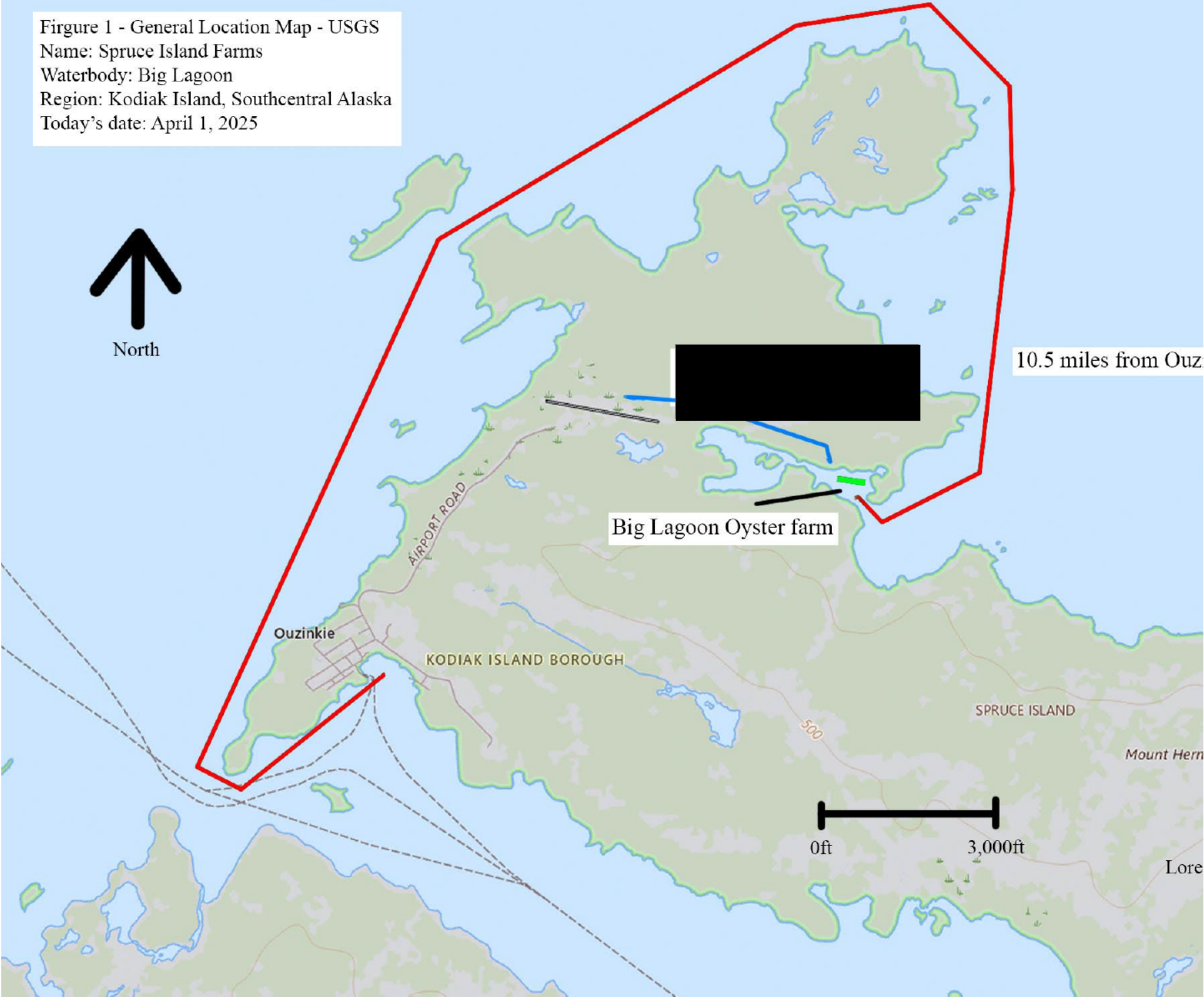
Printed Name Vickie Natak

Signature of Applicant [Signature] Date 4/30/2025

I have enclosed the application fee required under 11 AAC 05.230(d)(3)(A)

In submitting this form, the applicant certifies that he or she has not changed the original text of the form or any attached documents provided by the Division. This information is made a part of the state public land records and becomes public information under AS 40.25.110 and 40.25.120 (unless the information qualifies for confidentiality under AS 38.05.035(a)(8) and confidentiality is requested, AS 43.05.230, or AS 45.48). Public information is open to inspection by you or any member of the public. A person who is the subject of the information may challenge its accuracy or completeness under AS 44.99.310, by giving a written description of the challenged information, the changes needed to correct it, and a name and address where the person can be reached. False statements made in an application for a benefit are punishable under AS 11.56.210. In submitting this form, the applicant agrees with the Department to use "electronic" means to conduct "transactions" (as those terms are used in the Uniform Electronic Transactions Act, AS 09.80.010 - AS 09.80.195) that relate to this form and that the Department need not retain the original paper form of this record: the department may retain this record as an electronic record and destroy the original.

Figure 1 - General Location Map - USGS  
Name: Spruce Island Farms  
Waterbody: Big Lagoon  
Region: Kodiak Island, Southcentral Alaska  
Today's date: April 1, 2025

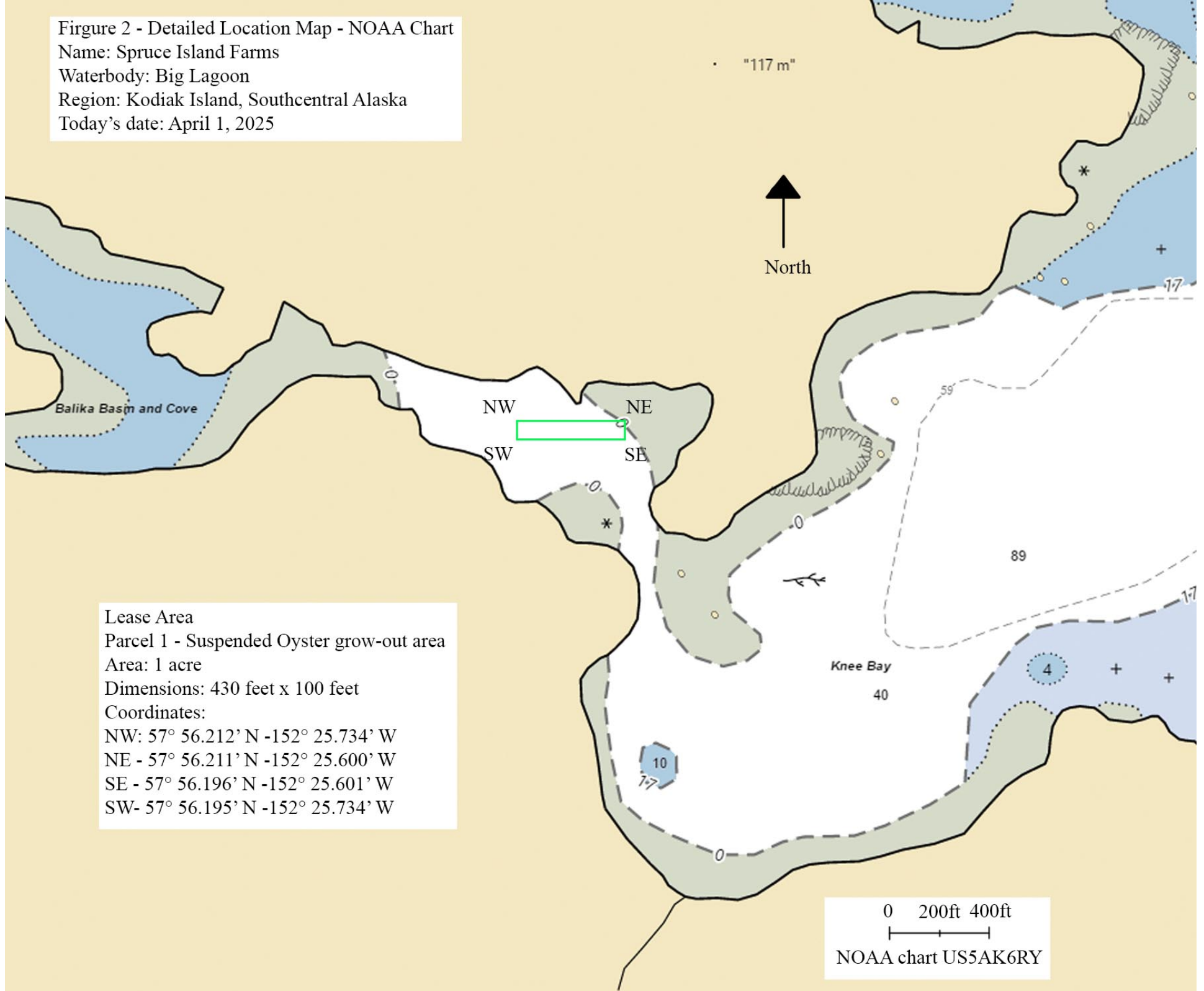


10.5 miles from Ouz

Big Lagoon Oyster farm

0ft 3,000ft

Figure 2 - Detailed Location Map - NOAA Chart  
Name: Spruce Island Farms  
Waterbody: Big Lagoon  
Region: Kodiak Island, Southcentral Alaska  
Today's date: April 1, 2025



Lease Area  
Parcel 1 - Suspended Oyster grow-out area  
Area: 1 acre  
Dimensions: 430 feet x 100 feet  
Coordinates:  
NW: 57° 56.212' N -152° 25.734' W  
NE - 57° 56.211' N -152° 25.600' W  
SE - 57° 56.196' N -152° 25.601' W  
SW- 57° 56.195' N -152° 25.734' W

0 200ft 400ft  
NOAA chart US5AK6RY

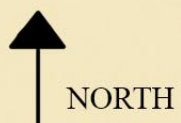
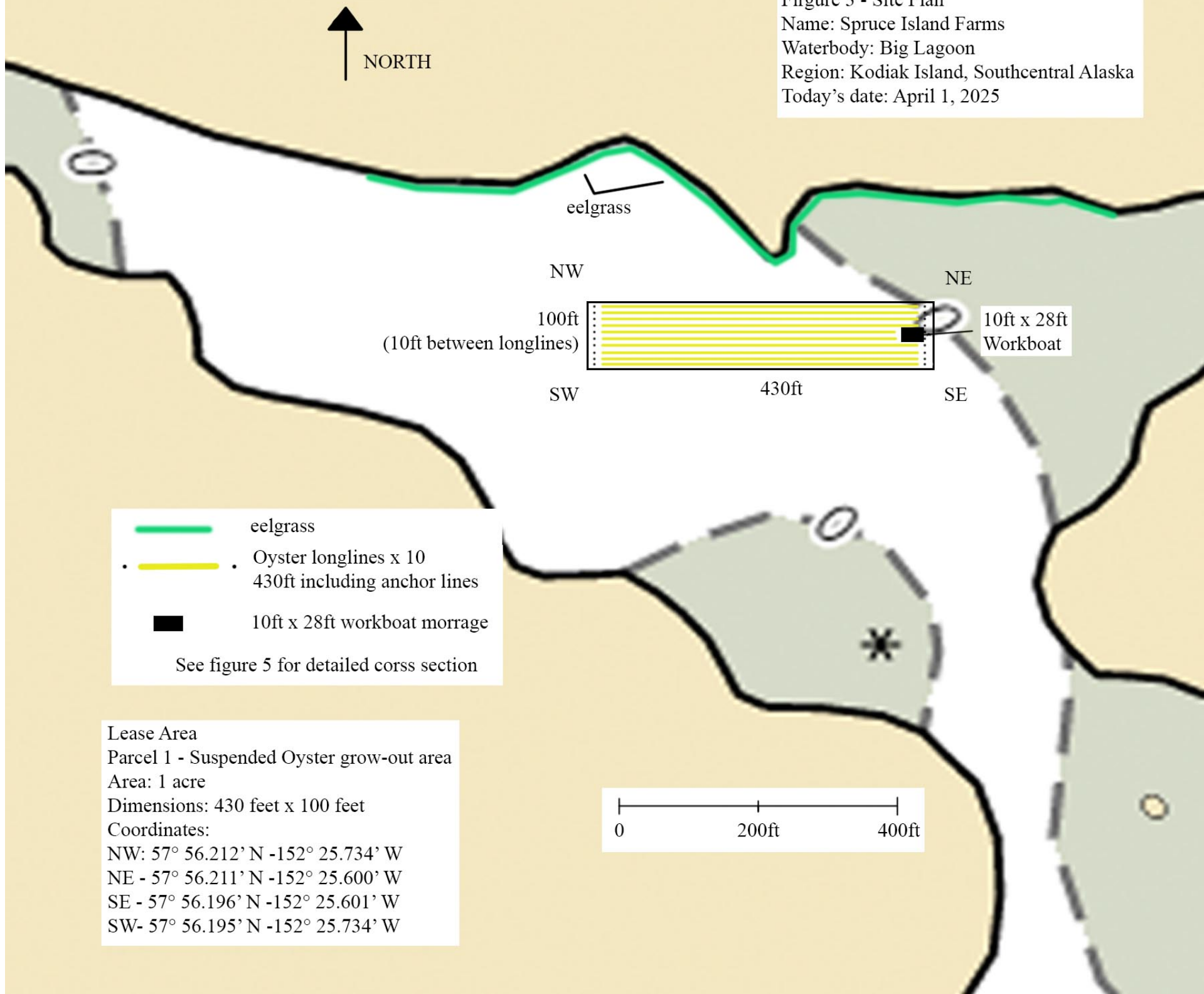
Figure 3 - Site Plan

Name: Spruce Island Farms

Waterbody: Big Lagoon

Region: Kodiak Island, Southcentral Alaska

Today's date: April 1, 2025



eelgrass

NW

NE




100ft  
(10ft between longlines)

10ft x 28ft  
Workboat

SW

430ft

SE

-  eelgrass
  -  Oyster longlines x 10  
430ft including anchor lines
  -  10ft x 28ft workboat moorage
- See figure 5 for detailed cross section

Lease Area  
Parcel 1 - Suspended Oyster grow-out area  
Area: 1 acre  
Dimensions: 430 feet x 100 feet  
Coordinates:  
NW: 57° 56.212' N -152° 25.734' W  
NE - 57° 56.211' N -152° 25.600' W  
SE - 57° 56.196' N -152° 25.601' W  
SW- 57° 56.195' N -152° 25.734' W

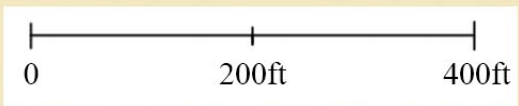
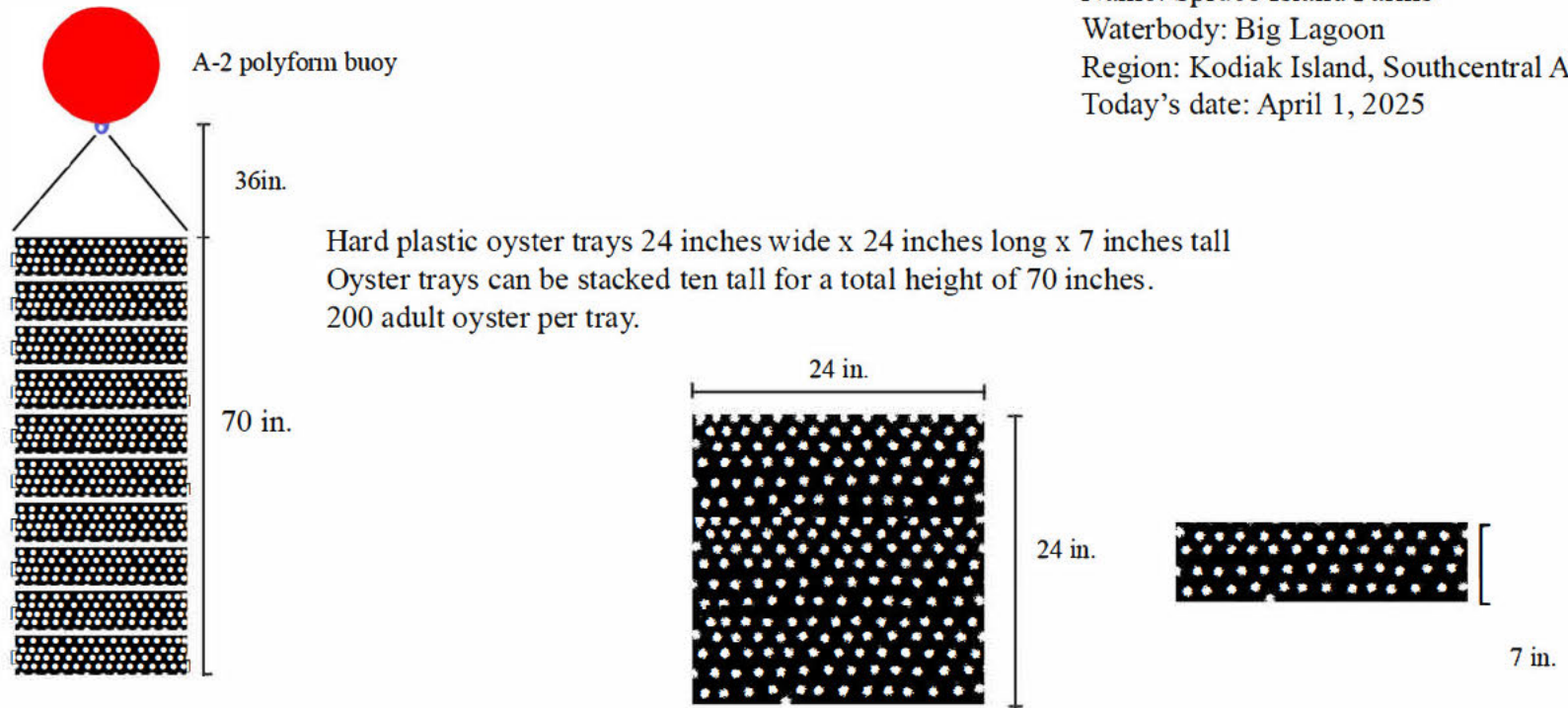


Figure 4 - Detailed Cross-sectional Diagrams  
 Name: Spruce Island Farms  
 Waterbody: Big Lagoon  
 Region: Kodiak Island, Southcentral Alaska  
 Today's date: April 1, 2025



Cross-section view of of longline for suspended trays.

