



## Colville Solid Waste, LLC Development Plan Colville Solid Waste Transfer Pad

### **Project description**

The Colville Solid Waste Transfer Pad will support current operations on the North Slope, as well as the Willow Project. Colville Inc. currently uses the Spine Road on which the lease is being requested, and as a result, no increase in traffic will occur. The construction of the Colville Solid Waste Transfer Pad will minimize impact by reducing the number of trips required to transport dumpsters. Covered steel dumpsters received from Alpine production facilities by truck will be stored temporarily on the Colville Solid Waste Transfer Pad until they are retrieved by another fleet of drivers and transferred to the Service Area 10 Landfill. Coordination will occur with the oil and gas operator in the area.

### **Legal description**

The proposed location for the Solid Waste Transfer Pad is along the Spine Road within the Resource Development District of the North Slope Borough, in Section 13 of Township 10N, Range 7E, Umiat Meridian. The coordinates of the proposed pad are 70°12'58.73"N, 150°14'56.49"W (please see Figure 1). The location was chosen for: 1) its proximity to the Alpine ice road takeoff; 2) its elevation relative to adjacent tundra and location on the inside corner of the road to minimize snow clearing activities near Spine Road, and 3) for its separation from pipelines, easements and other developments in the area.

The proposed pad would be 540' in length on the sides parallel to the Spine Road, and 400' wide on the sides perpendicular to the road, resulting in an approximately 5-acre lease area (please see Figure 2). Construction of the 4 ft to 5ft-high pad would result in gravel fill being laid down on the tundra to match the grade of the Spine Road. Gravel would be spread on woven geotextile placed directly on the existing tundra. A 24-inch diameter culvert would be installed at under each driveway onto the gravel pad. This culvert would be placed on 6" rigid insulation sandwiched between woven geotextile fabric on top of undisturbed tundra (please see Figure 4). Construction of the pad would begin in June of 2026 and conclude by August of 2026.

### **Terrain/ground cover**

The location for the proposed pad was chosen primarily for its height relative to the surrounding tundra, minimizing the impact of filling waterbodies such as lagoons or creeks. The area is characterized by high-center polygons, which are typically an indicator of well-drained tundra. Current ground cover at the site includes lichens, sedges, grasses, forbs, and dwarf willow.

### **Access**

The site will be accessed from the Spine Road. Two driveways will be built from the Spine Road to the pad. No off-road travel or river crossings will be required to construct or access the site.

### **Buildings and other structures**

All structures established on the pad will be temporary and mobile (please see Figure 3).

Structures will include:

- A 16'x40' camp module which will include an office and living quarters for Colville personnel, typically consisting of the facilities watchman when the site is in operation.
- A 30'x50' tent for storage of a loader used for snow removal, pad maintenance, and transfer of dumpsters between tow vehicles.
- Approximately 20 dumpsters (20' in length) will be on the pad at any given time, which will be moved between customers' locations, the Solid Waste Transfer Pad, and the Service Area 10 Landfill. Dumpsters will have lids that are secured at the customer's pickup point and remain closed until contents are placed in the SA-10 landfill.

### **Power source**

The only utilities on the gravel pad will be power distribution from generator to the camp module and tent, and a welded steel fuel line from the above-ground tank to the generator, camp, and tent. Utilities will be installed above grade in the protected area between structures. The generator will be running when the camp module is occupied.

### **Waste types, sources, and disposal methods**

Waste generated onsite at the camp module will be disposed of safely in bear-proof containers and ultimately routed to the Service Area 10 Landfill. A wastewater holding tank will also be onsite, which will be serviced by Colville or another provider in the area. No hazardous material will be generated onsite.

Contents of the dumpsters staged on the pad will be limited to everyday camp waste such as food scraps and paper waste. No hazardous materials are disposed of in the dumpsters, as all

hazardous materials generated and disposed of in the service area must be routed to facilities for testing, characterization, and appropriate disposal.

#### **Hazardous substances**

Ultra-low sulfur diesel fuel will be stored onsite, to be used for furnaces inside the camp module and tent. Fuel will be stored in a double-walled tank with a capacity of no more than 10,000 gallons. The tank will be located within secondary containment with all Code-required appurtenances including fill limiting valve, high level alarm, fill containment basin, and leak detection system for the double wall tank annular space. The secondary containment dike will be monitored for fuel daily by the facility operator, and by the driver upon fuel delivery. Accumulated precipitation will be removed when more than 6-inches of liquid accumulates in the dike or it impacts containing the tank volume. Best practices will be used for fuel storage and fuel handling activities, including use of duck ponds under idling vehicles and during refueling, and drip pans under heating appliance oil burners. Additionally, less than two drums or 110 gallons of oils and lubricants will be stored inside the tent on containment pallets.

#### **Water supply**

There will be a small potable water tank and wastewater holding tank on site to support the camp module. Tanks will either be serviced by Colville, or by one of the several other providers of these services in the area such as Worley, AFC, or Cruz.

#### **Parking areas and storage areas**

Passenger vehicles will be parked in front of the camp (please see Figure 3). The flatbed tow vehicles hauling the dumpsters will only be on the pad briefly to exchange dumpsters and will not require parking. The pad will include space for temporarily storing up to 20 conex-sized (20 ft ISO Container) enclosed dumpsters, a camp module, and a tent for storing a loader.

#### **Number of people using the site**

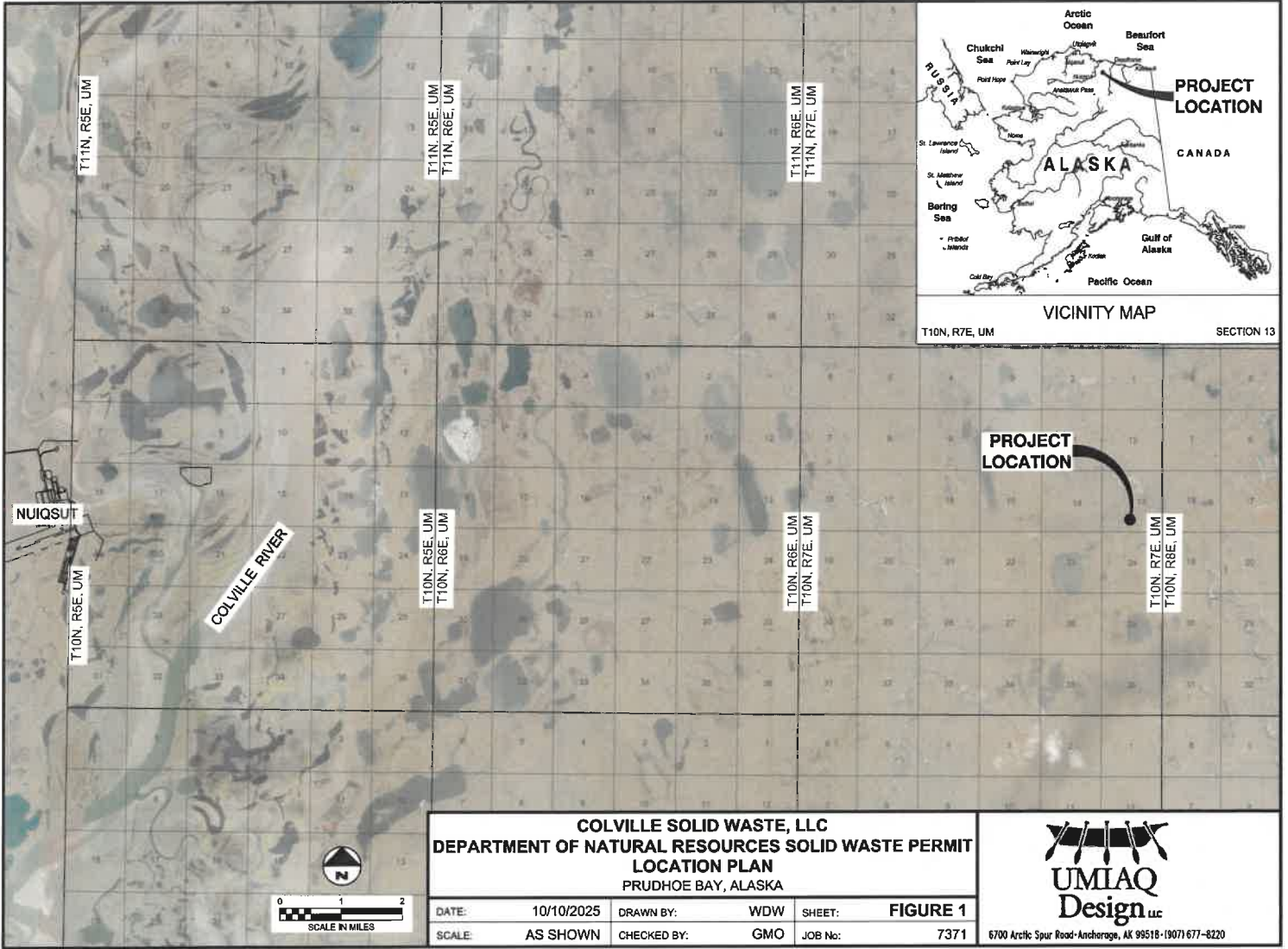
Up to two to four personnel will be onsite at any given time. The temporary camp module will provide overnight lodging for Colville personnel to stay at from approximately November through May while the ice road is open. The supervisor to staff ratio onsite will be no less than 1:4.

#### **Maintenance and operations**

As all structures on the pad are temporary and mobile, no long-term maintenance will be required. Daily operations will involve the transportation of dumpsters to and from the pad, as well as activity associated with maintaining the camp module, such as snow removal, wastewater removal, and generator tank refueling.

**Closure/reclamation plan**

Upon termination of the lease, Colville will coordinate with the United States Army Corps of Engineers (USACE) to develop a reclamation plan to return the lease area to its natural state.

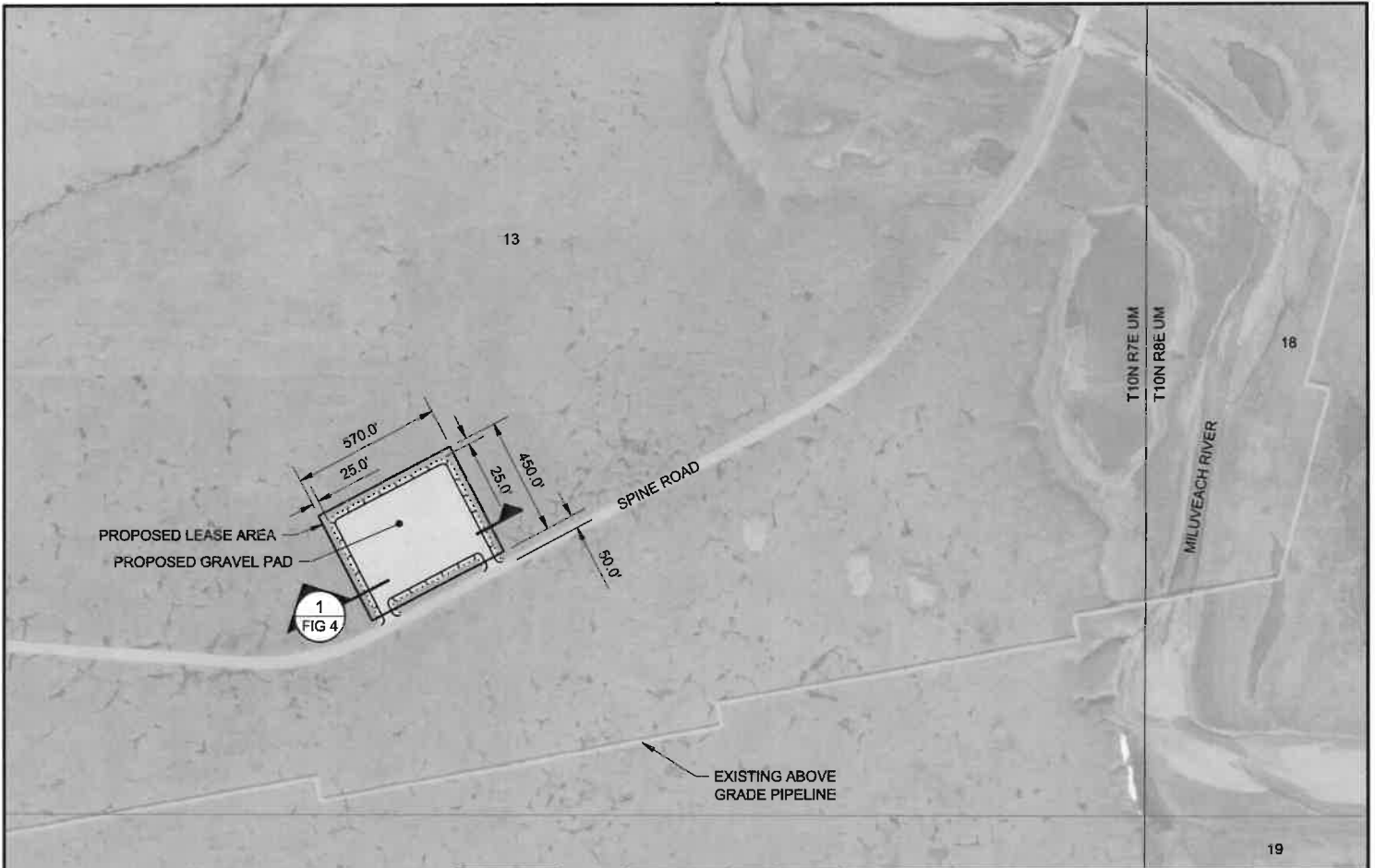


**COLVILLE SOLID WASTE, LLC  
DEPARTMENT OF NATURAL RESOURCES SOLID WASTE PERMIT  
LOCATION PLAN  
PRUDHOE BAY, ALASKA**

DATE:	10/10/2025	DRAWN BY:	WDW	SHEET:	<b>FIGURE 1</b>
SCALE:	AS SHOWN	CHECKED BY:	GMO	JOB No.:	7371



6700 Arctic Spur Road-Anchorage, AK 99518-19071 677-8220



1  
FIG 4

PROPOSED LEASE AREA  
PROPOSED GRAVEL PAD

SPINE ROAD

EXISTING ABOVE  
GRADE PIPELINE

T10N R7E UM  
T10N R8E UM

MILVEACH RIVER

24

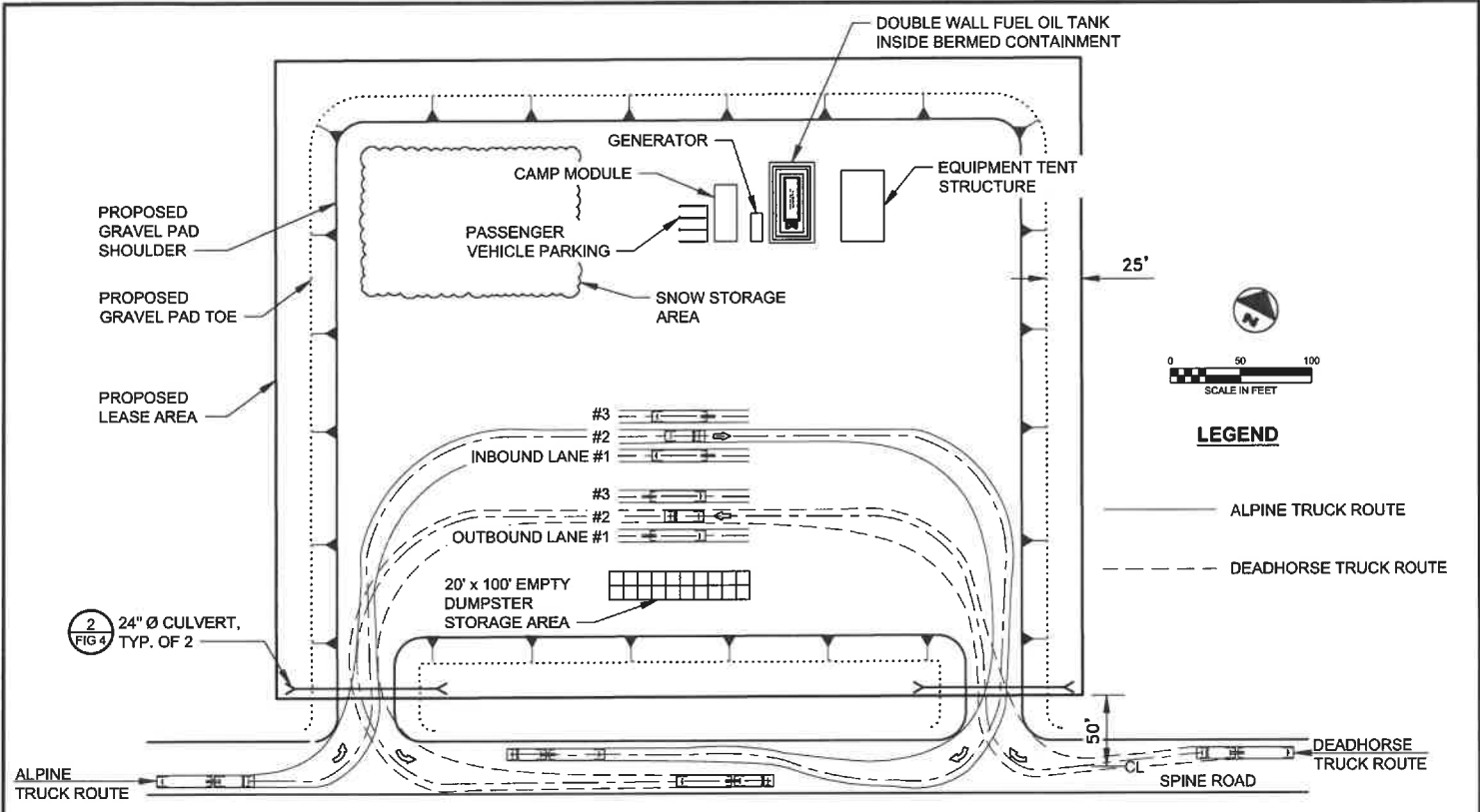


**COLVILLE SOLID WASTE, LLC**  
**DEPARTMENT OF NATURAL RESOURCES SOLID WASTE PERMIT**  
**SITE PLAN**  
 PRUDHOE BAY, ALASKA

DATE:	10/10/2025	DRAWN BY:	WDW	SHEET:	<b>FIGURE 2</b>
SCALE:	AS SHOWN	CHECKED BY:	GMO	JOB No:	7371



6700 Arctic Spur Road - Anchorage, AK 99518 - (907) 677-8220



2  
FIG 4  
24" Ø CULVERT,  
TYP. OF 2

1  
FIG 3  
**PROJECT LAYOUT PLAN**  
SCALE: 1" = 100'

<b>COLVILLE SOLID WASTE, LLC</b> <b>DEPARTMENT OF NATURAL RESOURCES SOLID WASTE PERMIT</b> <b>PROJECT LAYOUT PLAN</b> PRUDHOE BAY, ALASKA			
DATE:	10/10/2025	DRAWN BY:	TBS
SCALE:	AS SHOWN	CHECKED BY:	GMO
SHEET:	<b>FIGURE 3</b>		
JOB No.:	7371		



6700 Arctic Spur Road-Anchorage, AK 99518-(907) 677-8220

