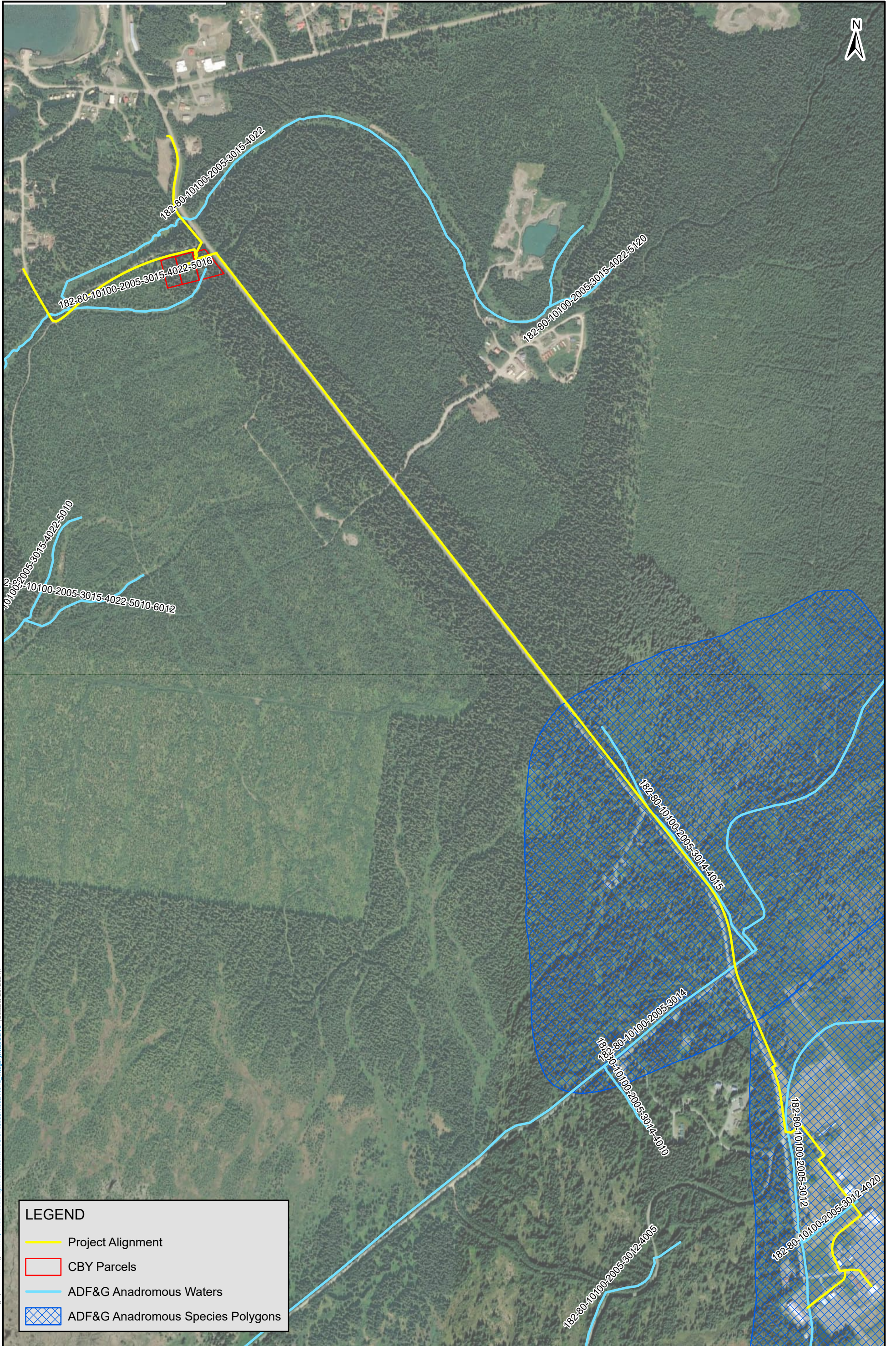
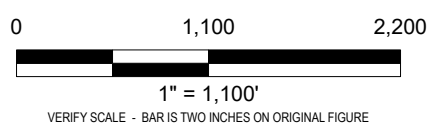


112494



LEGEND

- Project Alignment
- CBY Parcels
- ADF&G Anadromous Waters
- ADF&G Anadromous Species Polygons



NOTES:

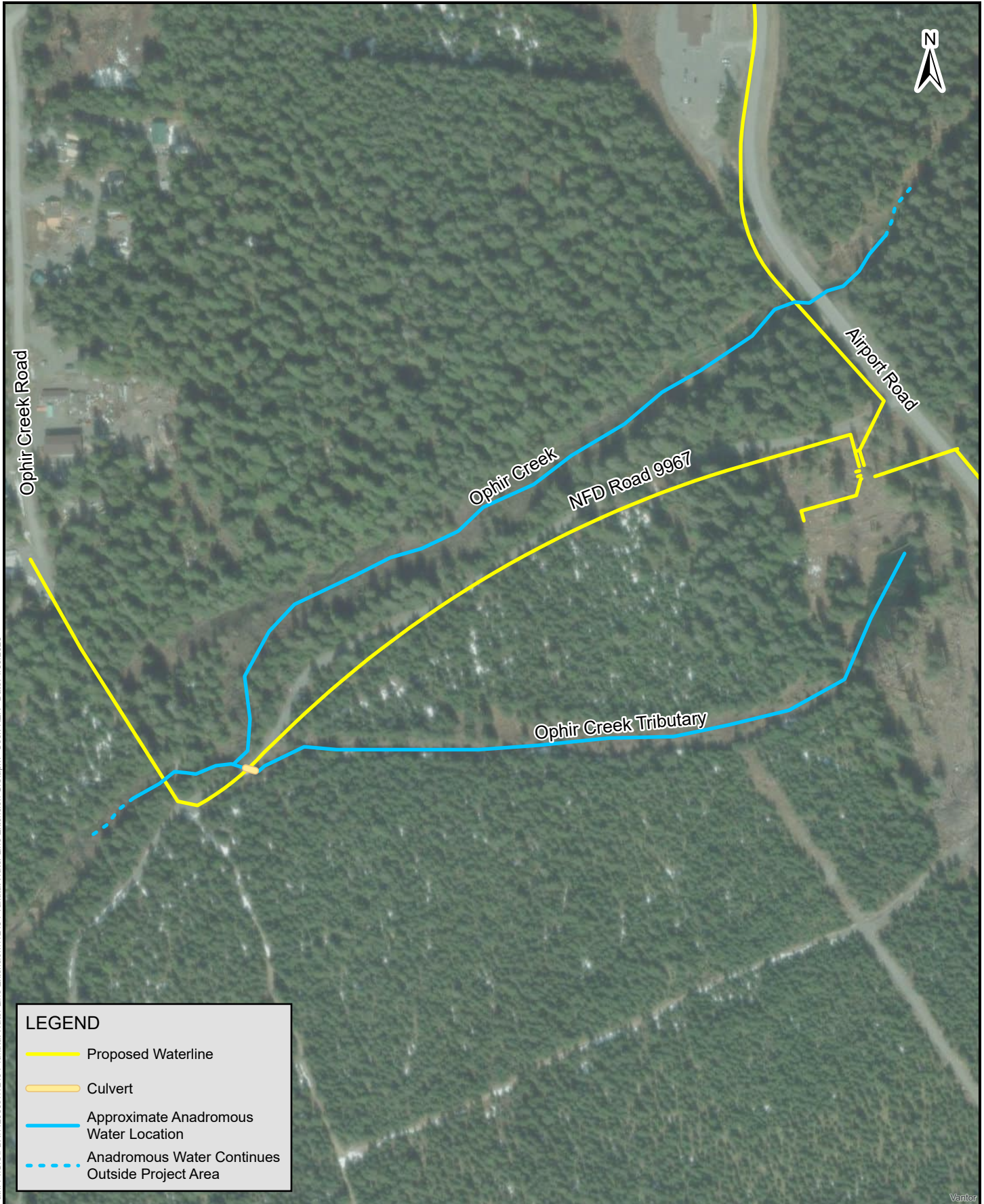
1. CBY = City and Borough of Yakutat; ADF&G = Alaska Department of Fish and Game

ADF&G ANADROMOUS WATERS

January 2026

Figure 1

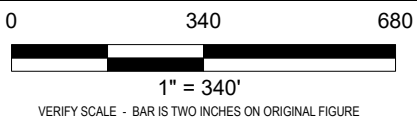
Esri, "World Imagery", Scale not given, https://services.arcgis.com/ArcGISRest/services/World_Imagery/MapServer (October 25, 2024)



Spatial Reference: NAD 1983 2011 StatePlaneAlaska 1 FIPS 5001 Feet WKID: 102445
Path: P:\GIS\EFBX\112000s\112494_Yakutat Water Line Extension\GIS.aprx User: KZR Date: 1/30/2026

LEGEND

- Proposed Waterline
- Culvert
- Approximate Anadromous Water Location
- Anadromous Water Continues Outside Project Area



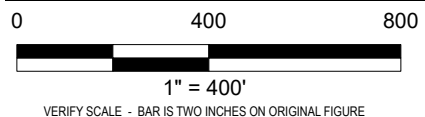
APPROXIMATE ANADROMOUS WATERS - OPHIR CREEK
January 2026
FIGURE 2



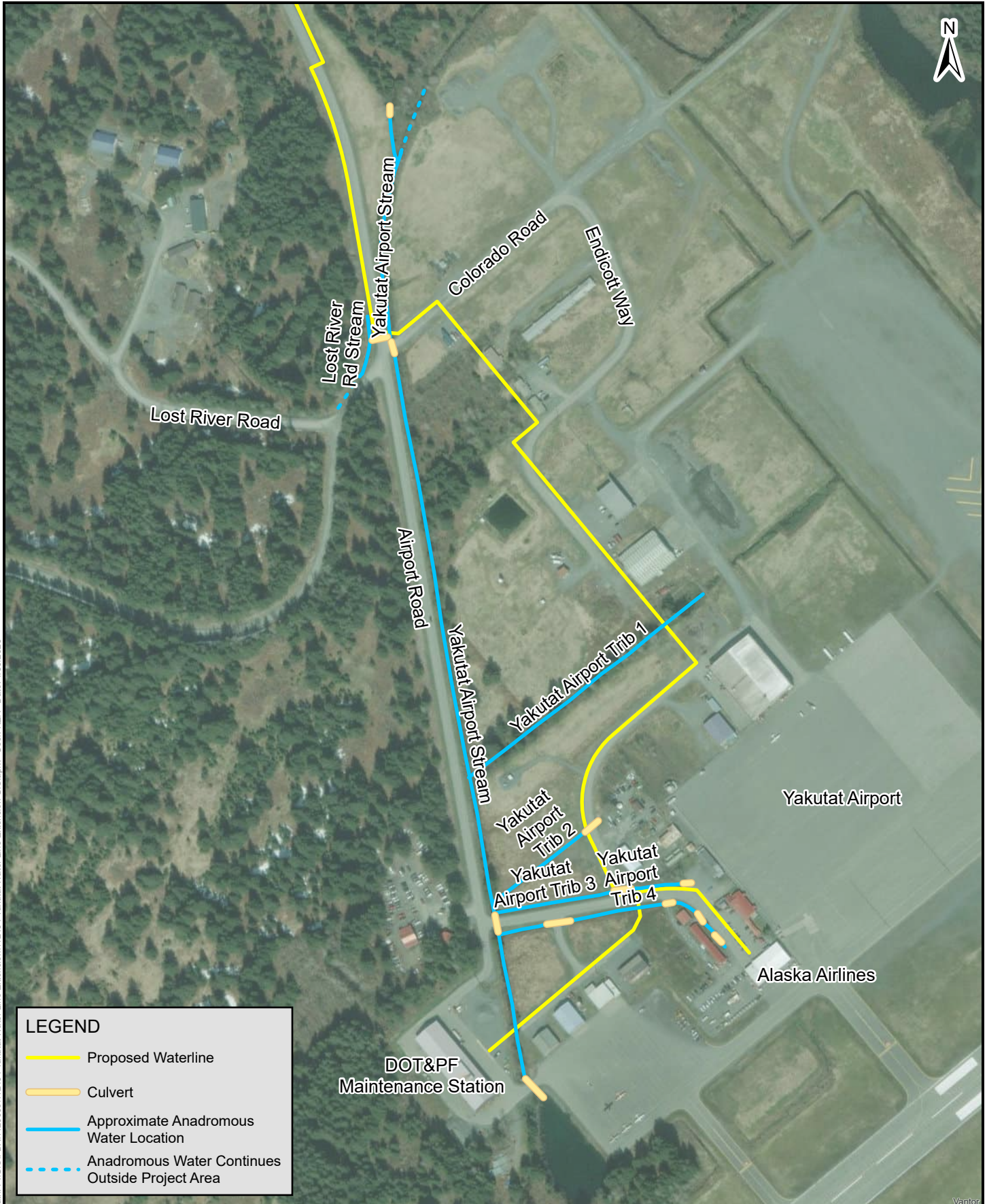
Spatial Reference: NAD 1983 2011 StatePlaneAlaska 1 FIPS 5001 Feet WKID: 102445
Path: P:\GIS\FEBX\112000s\112494_Yakutat Water Line Extension\GIS.aprx User: KZR Date: 1/30/2026

LEGEND

- Proposed Waterline
- Culvert
- Approximate Anadromous Water Location
- Anadromous Water Continues Outside Project Area



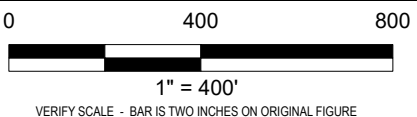
APPROXIMATE ANADROMOUS WATERS - AIRPORT ROAD
January 2026
FIGURE 3



Spatial Reference: NAD 1983 2011 StatePlane Alaska 1 FIPS 5001 Feet WKID: 102445
 Path: P:\GIS\EFBX\112000s\112494_Yakutat Water Line Extension\GIS.aprx User: KZR Date: 1/30/2026

LEGEND

- Proposed Waterline
- Culvert
- Approximate Anadromous Water Location
- Anadromous Water Continues Outside Project Area



APPROXIMATE ANADROMOUS WATERS -YAKUTAT AIRPORT
 January 2026
FIGURE 4