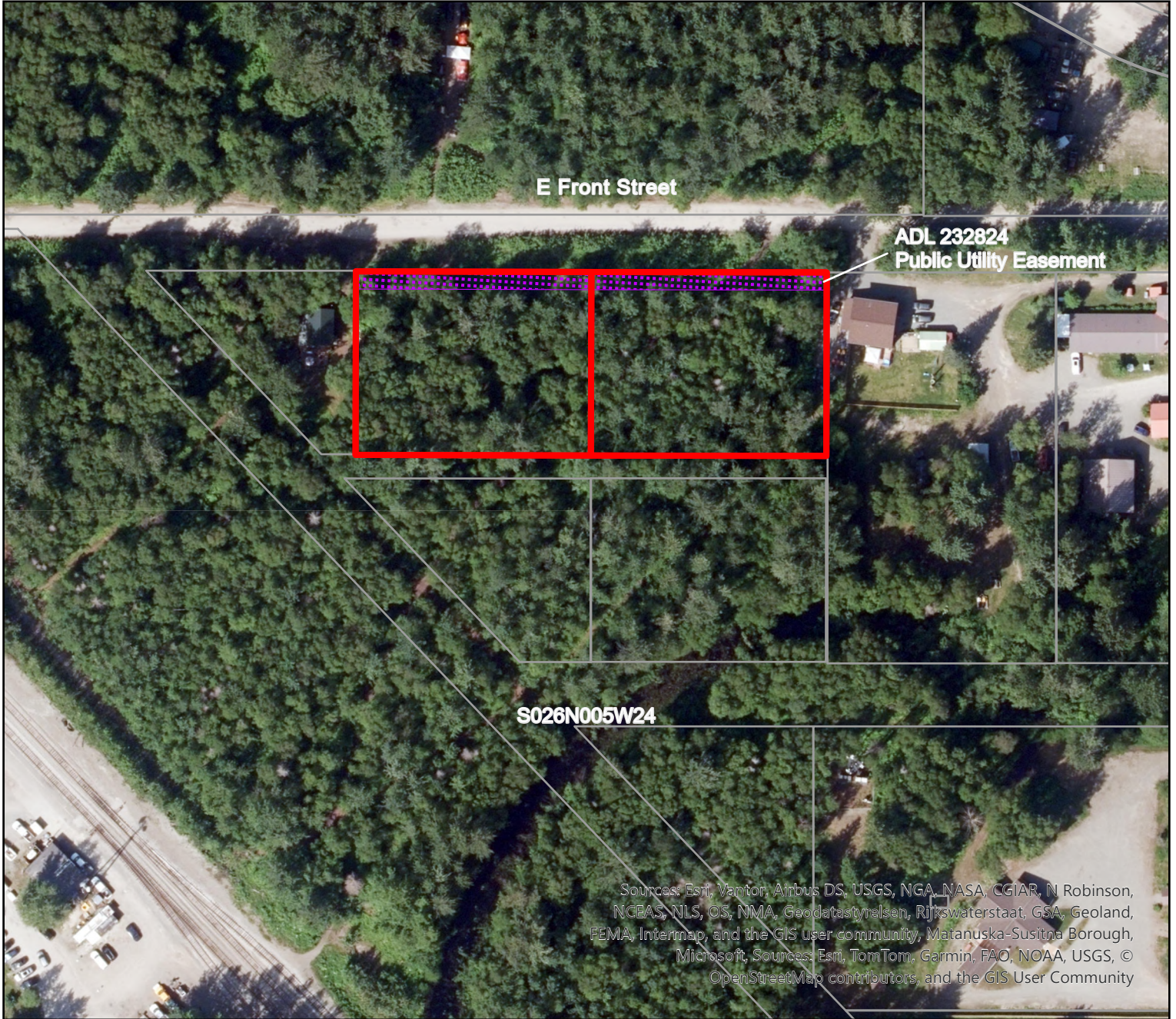




This depiction is for illustrative purposes only. It is intended to be used as a conceptual guide and many not show the exact locations of existing surveyed parcels or show all easements and reservations. Source documents remain the official record.

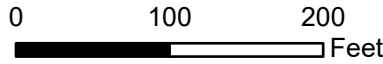
Attachment A: Vicinity Map Proposed Noncompetitive Sale ADL 234738



Sources: Esri, Vantor, Airbus DS, USGS, NGA, NASA, CGIAR, N Robinson, NCEAS, NLS, OS, NMA, Geodatastyrelsen, Rijkswaterstaat, GSA, Geoland, FEMA, Intermap, and the GIS user community, Matanuska-Susitna Borough, Microsoft, Sources: Esri, TomTom, Garmin, FAO, NOAA, USGS, © OpenStreetMap contributors, and the GIS User Community

Legend

- Subject Parcel
- Underground Electric Line Easement
- Lot Lines



JDK 4/21/26

Section 24, Township 26 N, Range 5 W, Seward Meridian

USGS QUAD 1:63,360
Talkeetna B-1
For more information contact:
John King
Department of Natural Resources
Division of Mining, Land & Water
Phone: 907-465-3513
Fax: 907-269-8916
Email: john.king@alaska.gov

