

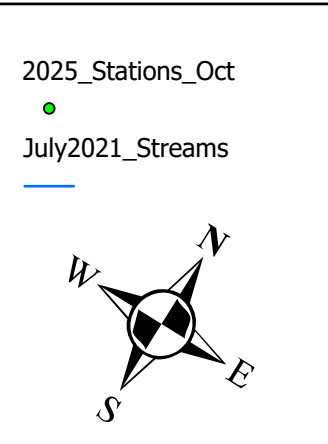
**SHEPARD POINT OIL SPILL  
RESPONSE FACILITY PROJECT**  
 APPLICANT: NATIVE VILLAGE OF EYAK  
 FILE NO.: POA-1994-1014, ORCA INLET  
 PROPOSED ACTIVITY:  
**LINEAR TRANSPORTATION PROJECT**  
**ORCA INLET**  
**PRINCE WILLIAM SOUND**  
 NAD 1983 StatePlane Alaska FIPS 5003 US Feet



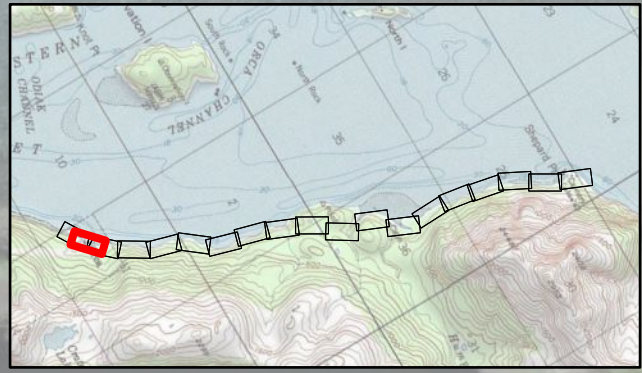
LAT., LONG. OF SHEP. PT.:  
**60 37' 51.45" N**  
**145 40' 18.82" W**  
**Sheet 1 of 19**  
**November 2025**

90 45 0 90  
Feet

- Legend**
- 2025\_Fill\_Oct1
  - 2025\_Cut\_Oct1
  - 2025 Feb25 Cut Limits
  - 2025 Feb25 Fill Limits
  - Contour 5M
  - MHW, 11.7 ft
  - HTL\_15.7
  - LINES\_MLLW\_0FT



- FEB 2025 Alignment Impacts**
- 02142025\_Stream\_Impacts
  - 2025\_Subtidal\_Impacts
  - 2025\_Intertidal\_Impacts
  - 2024\_Eelgrass\_ALL
  - Wetlands
- 9/17/2025 Alignment Impacts**
- 09172025\_Stream\_Impacts
  - 09172025\_Intertidal\_Impacts
  - 09172025-Subtidal\_Impacts



**SHEPARD POINT OIL SPILL  
RESPONSE FACILITY PROJECT**  
 APPLICANT: NATIVE VILLAGE OF EYAK  
 FILE NO.: POA-1994-1014, ORCA INLET  
 PROPOSED ACTIVITY:  
**LINEAR TRANSPORTATION PROJECT**  
**ORCA INLET**  
**PRINCE WILLIAM SOUND**  
 NAD 1983 StatePlane Alaska FIPS 5003 US Feet

**Bristol**  
 ENGINEERING SERVICES COMPANY, LLC

Native Village of Eyak

**MSE** Midnight Sun ENVIRONMENTAL, LLC

LAT., LONG. OF SHEP. PT.:  
 60 37' 51.45" N  
 145 40' 18.82" W  
**Sheet 2 of 19**  
 November 2025

90 45 0 90  
 Feet

**Legend**

- 2025\_Fill\_Oct1
- 2025\_Cut\_Oct1
- 2025 Feb25 Cut Limits
- 2025 Feb25 Fill Limits
- Contour 5M
- MHW, 11.7 ft
- HTL\_15.7
- LINES\_MLLW\_0FT
- 2025\_Stations\_Oct
- July2021\_Streams

**FEB 2025 Alignment Impacts**

- 02142025\_Stream\_Impacts
- 2025\_Subtidal\_Impacts
- 2025\_Intertidal\_Impacts
- 2024\_Eelgrass\_ALL
- Wetlands

**9/17/2025 Alignment Impacts**

- 09172025\_Stream\_Impacts
- 09172025\_Intertidal\_Impacts
- 09172025-Subtidal\_Impacts



**SHEPARD POINT OIL SPILL  
RESPONSE FACILITY PROJECT**  
 APPLICANT: NATIVE VILLAGE OF EYAK  
 FILE NO.: POA-1994-1014, ORCA INLET  
 PROPOSED ACTIVITY:  
**LINEAR TRANSPORTATION PROJECT**  
**ORCA INLET**  
**PRINCE WILLIAM SOUND**  
 NAD 1983 StatePlane Alaska FIPS 5003 US Feet

**Bristol**  
 ENGINEERING SERVICES COMPANY, LLC

Native Village of Eyak

**MSE** Midnight Sun ENVIRONMENTAL, LLC

LAT., LONG. OF SHEP. PT.:  
 60 37' 51.45" N  
 145 40' 18.82" W  
**Sheet 3 of 19**  
 November 2025

90 45 0 90  
 Feet

**Legend**

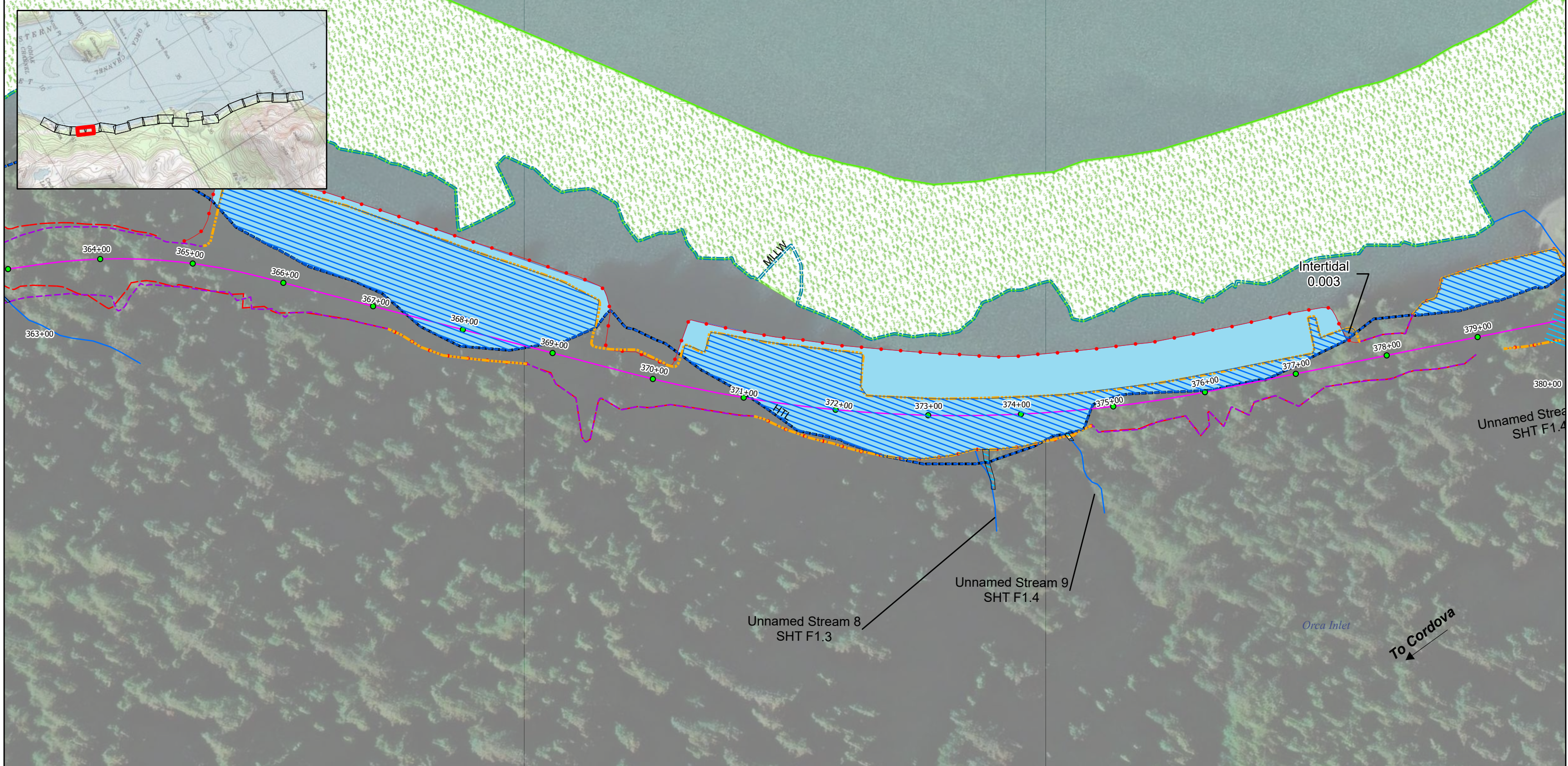
- 2025\_Fill\_Oct1
- 2025\_Cut\_Oct1
- 2025 Feb25 Cut Limits
- 2025 Feb25 Fill Limits
- Contour 5M
- MHW, 11.7 ft
- HTL\_15.7
- LINES\_MLLW\_0FT
- 2025\_Stations\_Oct
- July2021\_Streams

**FEB 2025 Alignment Impacts**

- 02142025\_Stream\_Impacts
- 2025\_Subtidal\_Impacts
- 2025\_Intertidal\_Impacts
- 2024\_Eelgrass\_ALL
- Wetlands

**9/17/2025 Alignment Impacts**

- 09172025\_Stream\_Impacts
- 09172025\_Intertidal\_Impacts
- 09172025-Subtidal\_Impacts



**SHEPARD POINT OIL SPILL  
RESPONSE FACILITY PROJECT**  
 APPLICANT: NATIVE VILLAGE OF EYAK  
 FILE NO.: POA-1994-1014, ORCA INLET  
 PROPOSED ACTIVITY:  
**LINEAR TRANSPORTATION PROJECT**  
**ORCA INLET**  
**PRINCE WILLIAM SOUND**  
 NAD 1983 StatePlane Alaska FIPS 5003 US Feet

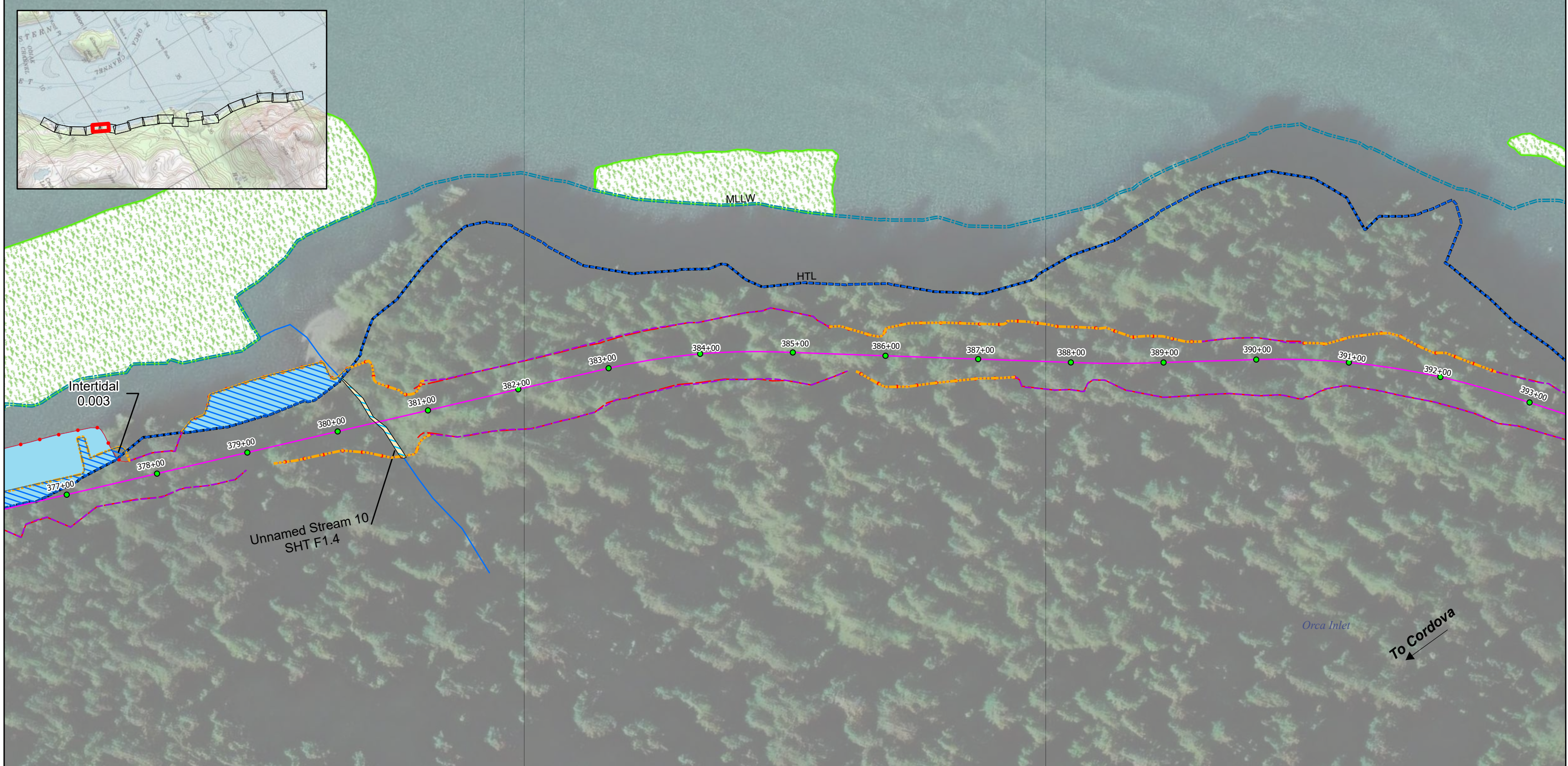


LAT., LONG. OF SHEP. PT.:  
**60 37' 51.45" N**  
**145 40' 18.82" W**  
**Sheet 4 of 19**  
**November 2025**

- Legend**
- 2025\_Fill\_Oct1
  - 2025\_Cut\_Oct1
  - 2025 Feb25 Cut Limits
  - 2025 Feb25 Fill Limits
  - Contour 5M
  - MHW, 11.7 ft
  - HTL\_15.7
  - LINES\_MLLW\_0FT



- FEB 2025 Alignment Impacts**
- 02142025\_Stream\_Impacts
  - 2025\_Subtidal\_Impacts
  - 2025\_Intertidal\_Impacts
  - 2024\_Eelgrass\_ALL
  - Wetlands
- 9/17/2025 Alignment Impacts**
- 09172025\_Stream\_Impacts
  - 09172025\_Intertidal\_Impacts
  - 09172025-Subtidal\_Impacts



**SHEPARD POINT OIL SPILL  
RESPONSE FACILITY PROJECT**  
 APPLICANT: NATIVE VILLAGE OF EYAK  
 FILE NO.: POA-1994-1014, ORCA INLET  
 PROPOSED ACTIVITY:  
**LINEAR TRANSPORTATION PROJECT**  
**ORCA INLET**  
**PRINCE WILLIAM SOUND**  
 NAD 1983 StatePlane Alaska FIPS 5003 US Feet



LAT., LONG. OF SHEP. PT.:  
**60 37' 51.45" N**  
**145 40' 18.82" W**  
**Sheet 5 of 19**  
**November 2025**

90 45 0 90  
 Feet

- Legend**
- 2025\_Fill\_Oct1
  - 2025\_Cut\_Oct1
  - 2025 Feb25 Cut Limits
  - 2025 Feb25 Fill Limits
  - Contour 5M
  - MHW, 11.7 ft
  - HTL\_15.7
  - LINES\_MLLW\_0FT



- FEB 2025 Alignment Impacts**
- 02142025\_Stream\_Impacts
  - 2025\_Subtidal\_Impacts
  - 2025\_Intertidal\_Impacts
  - 2024\_Eelgrass\_ALL
  - Wetlands
- 9/17/2025 Alignment Impacts**
- 09172025\_Stream\_Impacts
  - 09172025\_Intertidal\_Impacts
  - 09172025-Subtidal\_Impacts



**SHEPARD POINT OIL SPILL  
RESPONSE FACILITY PROJECT**  
 APPLICANT: NATIVE VILLAGE OF EYAK  
 FILE NO.: POA-1994-1014, ORCA INLET  
 PROPOSED ACTIVITY:  
**LINEAR TRANSPORTATION PROJECT**  
**ORCA INLET**  
**PRINCE WILLIAM SOUND**  
 NAD 1983 StatePlane Alaska FIPS 5003 US Feet

**Bristol**  
 ENGINEERING SERVICES COMPANY, LLC

Native Village of Eyak

**MSE** Midnight Sun ENVIRONMENTAL, LLC

LAT., LONG. OF SHEP. PT.:  
 60 37' 51.45" N  
 145 40' 18.82" W  
**Sheet 6 of 19**  
 November 2025

90 45 0 90  
 Feet

**Legend**

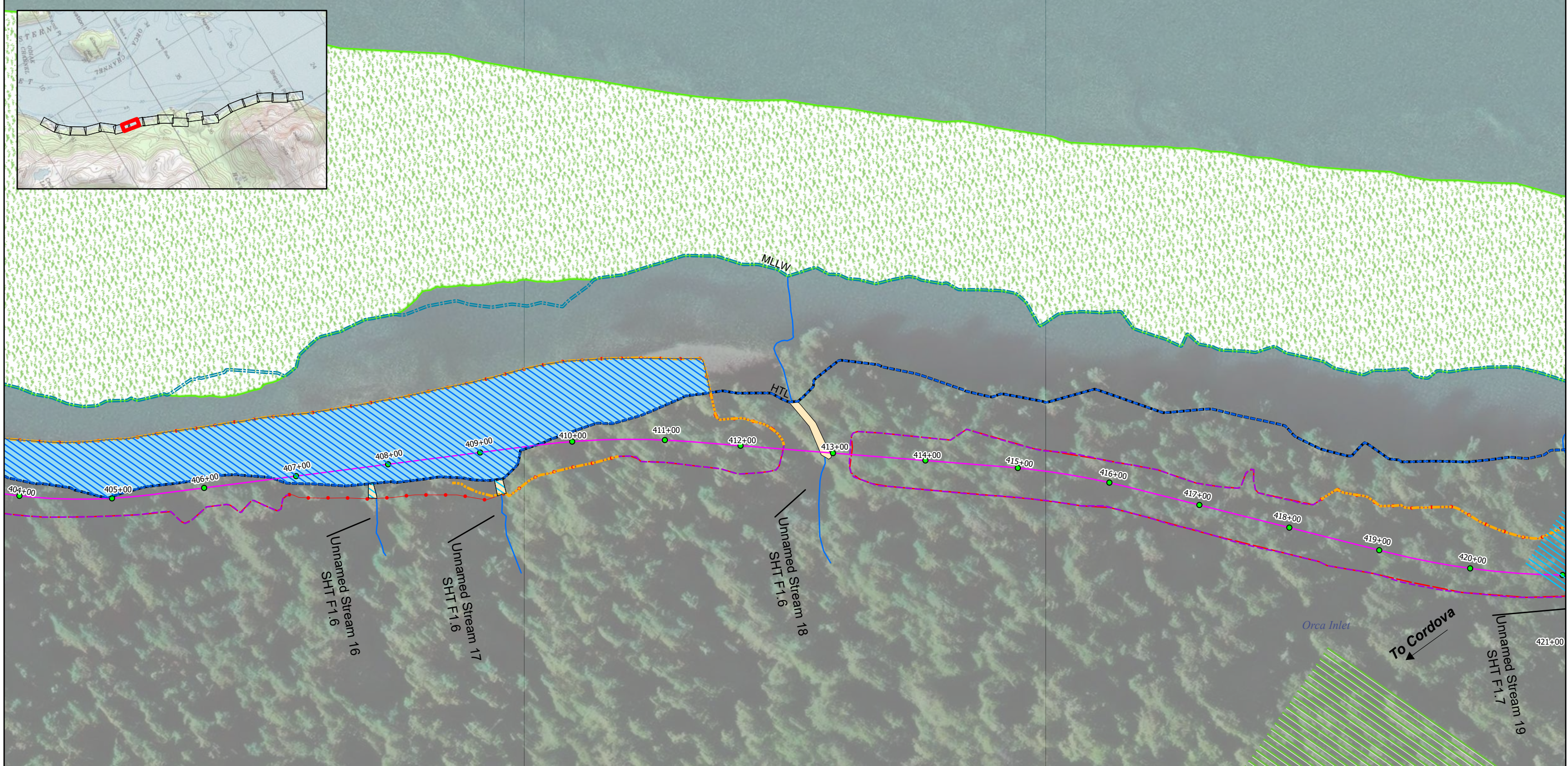
- 2025\_Fill\_Oct1
- 2025\_Cut\_Oct1
- 2025 Feb25 Cut Limits
- 2025 Feb25 Fill Limits
- Contour 5M
- MHW, 11.7 ft
- HTL\_15.7
- LINES\_MLLW\_0FT
- 2025\_Stations\_Oct
- July2021\_Streams

**FEB 2025 Alignment Impacts**

- 02142025\_Stream\_Impacts
- 2025\_Subtidal\_Impacts
- 2025\_Intertidal\_Impacts
- 2024\_Eelgrass\_ALL
- Wetlands

**9/17/2025 Alignment Impacts**

- 09172025\_Stream\_Impacts
- 09172025\_Intertidal\_Impacts
- 09172025-Subtidal\_Impacts



**SHEPARD POINT OIL SPILL  
RESPONSE FACILITY PROJECT**  
 APPLICANT: NATIVE VILLAGE OF EYAK  
 FILE NO.: POA-1994-1014, ORCA INLET  
 PROPOSED ACTIVITY:  
**LINEAR TRANSPORTATION PROJECT**  
**ORCA INLET**  
**PRINCE WILLIAM SOUND**  
 NAD 1983 StatePlane Alaska FIPS 5003 US Feet



LAT., LONG. OF SHEP. PT.:  
**60 37' 51.45" N**  
**145 40' 18.82" W**  
**Sheet 7 of 19**  
**November 2025**

90 45 0 90  
 Feet

- Legend**
- 2025\_Fill\_Oct1
  - 2025\_Cut\_Oct1
  - 2025 Feb25 Cut Limits
  - 2025 Feb25 Fill Limits
  - Contour 5M
  - MHW, 11.7 ft
  - HTL\_15.7
  - LINES\_MLLW\_0FT



- FEB 2025 Alignment Impacts**
- 02142025\_Stream\_Impacts
  - 2025\_Subtidal\_Impacts
  - 2025\_Intertidal\_Impacts
  - 2024\_Eelgrass\_ALL
  - Wetlands
- 9/17/2025 Alignment Impacts**
- 09172025\_Stream\_Impacts
  - 09172025\_Intertidal\_Impacts
  - 09172025-Subtidal\_Impacts



**SHEPARD POINT OIL SPILL  
RESPONSE FACILITY PROJECT**  
 APPLICANT: NATIVE VILLAGE OF EYAK  
 FILE NO.: POA-1994-1014, ORCA INLET  
 PROPOSED ACTIVITY:  
**LINEAR TRANSPORTATION PROJECT**  
**ORCA INLET**  
**PRINCE WILLIAM SOUND**  
 NAD 1983 StatePlane Alaska FIPS 5003 US Feet

**Bristol**  
 ENGINEERING SERVICES COMPANY, LLC

Native Village of Eyak

**MSE** Midnight Sun ENVIRONMENTAL, LLC

LAT., LONG. OF SHEP. PT.:  
**60 37' 51.45" N**  
**145 40' 18.82" W**  
**Sheet 8 of 19**  
**November 2025**

90 45 0 90  
 Feet

**Legend**

- 2025\_Fill\_Oct1
- 2025\_Cut\_Oct1
- 2025 Feb25 Cut Limits
- 2025 Feb25 Fill Limits
- Contour 5M
- MHW, 11.7 ft
- HTL\_15.7
- LINES\_MLLW\_0FT
- 2025\_Stations\_Oct
- July2021\_Streams

**FEB 2025 Alignment Impacts**

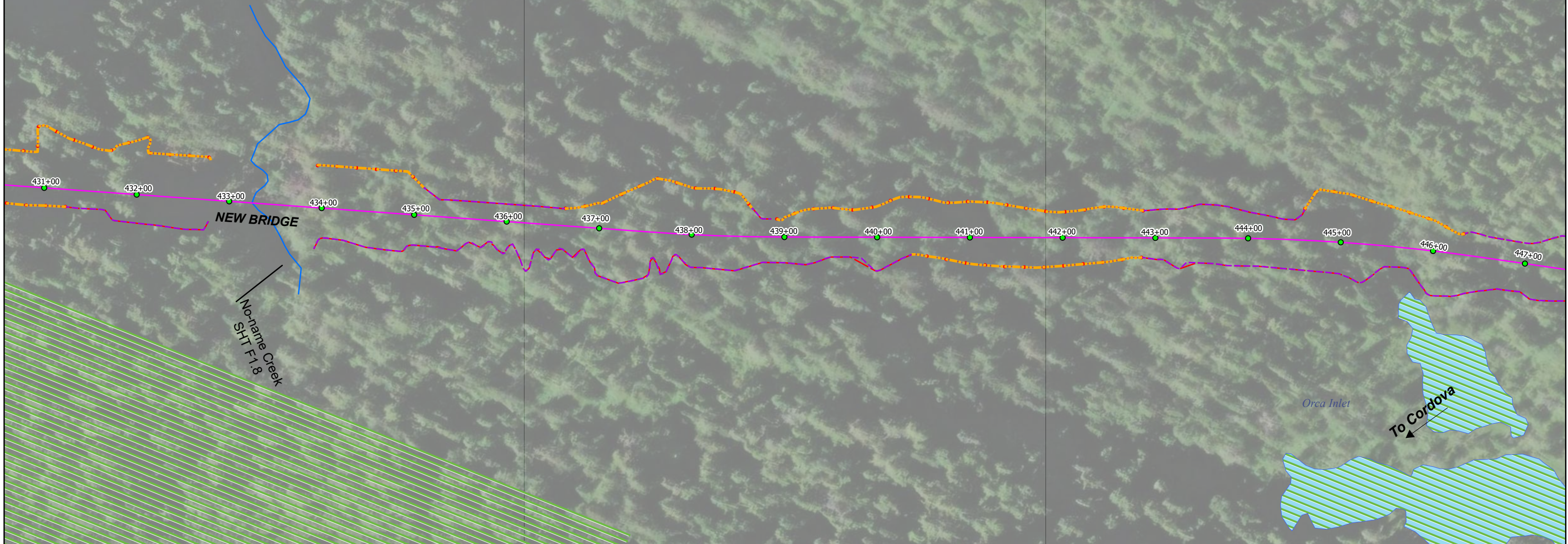
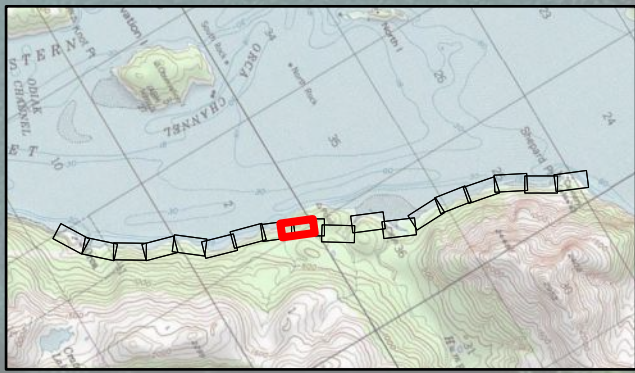
- 02142025\_Stream\_Impacts
- 2025\_Subtidal\_Impacts
- 2025\_Intertidal\_Impacts
- 2024\_Eelgrass\_ALL
- Wetlands

**9/17/2025 Alignment Impacts**

- 09172025\_Stream\_Impacts
- 09172025\_Intertidal\_Impacts
- 09172025-Subtidal\_Impacts

Scale: 1" = 300 Feet

Compass Rose



**SHEPARD POINT OIL SPILL  
RESPONSE FACILITY PROJECT**  
 APPLICANT: NATIVE VILLAGE OF EYAK  
 FILE NO.: POA-1994-1014, ORCA INLET  
 PROPOSED ACTIVITY:  
**LINEAR TRANSPORTATION PROJECT**  
**ORCA INLET**  
**PRINCE WILLIAM SOUND**  
 NAD 1983 StatePlane Alaska FIPS 5003 US Feet

**Bristol**  
 ENGINEERING SERVICES COMPANY, LLC

Native Village of Eyak

**MSE** Midnight Sun ENVIRONMENTAL, LLC

LAT., LONG. OF SHEP. PT.:  
**60 37' 51.45" N**  
**145 40' 18.82" W**  
**Sheet 9 of 19**  
**November 2025**

90 45 0 90  
 Feet

**Legend**

- 2025\_Fill\_Oct1
- 2025\_Cut\_Oct1
- 2025 Feb25 Cut Limits
- 2025 Feb25 Fill Limits
- Contour 5M
- MHW, 11.7 ft
- HTL\_15.7
- LINES\_MLLW\_0FT
- 2025\_Stations\_Oct
- July2021\_Streams

**FEB 2025 Alignment Impacts**

- 02142025\_Stream\_Impacts
- 2025\_Subtidal\_Impacts
- 2025\_Intertidal\_Impacts
- 2024\_Eelgrass\_ALL
- Wetlands

**9/17/2025 Alignment Impacts**

- 09172025\_Stream\_Impacts
- 09172025\_Intertidal\_Impacts
- 09172025-Subtidal\_Impacts



**SHEPARD POINT OIL SPILL  
RESPONSE FACILITY PROJECT**  
 APPLICANT: NATIVE VILLAGE OF EYAK  
 FILE NO.: POA-1994-1014, ORCA INLET  
 PROPOSED ACTIVITY:  
**LINEAR TRANSPORTATION PROJECT**  
**ORCA INLET**  
**PRINCE WILLIAM SOUND**  
 NAD 1983 StatePlane Alaska FIPS 5003 US Feet

**Bristol**  
 ENGINEERING SERVICES COMPANY, LLC

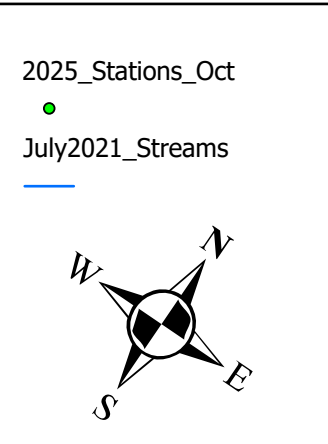
Native Village of Eyak

**MSE** Midnight Sun ENVIRONMENTAL, LLC

LAT., LONG. OF SHEP. PT.:  
**60 37' 51.45" N**  
**145 40' 18.82" W**  
**Sheet 10 of 19**  
**November 2025**

90 45 0 90  
 Feet

- Legend**
- 2025\_Fill\_Oct1
  - 2025\_Cut\_Oct1
  - 2025 Feb25 Cut Limits
  - 2025 Feb25 Fill Limits
  - Contour 5M
  - MHW, 11.7 ft
  - HTL\_15.7
  - LINES\_MLLW\_0FT



- FEB 2025 Alignment Impacts**
- 02142025\_Stream\_Impacts
  - 2025\_Subtidal\_Impacts
  - 2025\_Intertidal\_Impacts
  - 2024\_Eelgrass\_ALL
  - Wetlands
- 9/17/2025 Alignment Impacts**
- 09172025\_Stream\_Impacts
  - 09172025\_Intertidal\_Impacts
  - 09172025-Subtidal\_Impacts



**SHEPARD POINT OIL SPILL  
RESPONSE FACILITY PROJECT**  
 APPLICANT: NATIVE VILLAGE OF EYAK  
 FILE NO.: POA-1994-1014, ORCA INLET  
 PROPOSED ACTIVITY:  
**LINEAR TRANSPORTATION PROJECT**  
**ORCA INLET**  
**PRINCE WILLIAM SOUND**  
 NAD 1983 StatePlane Alaska FIPS 5003 US Feet

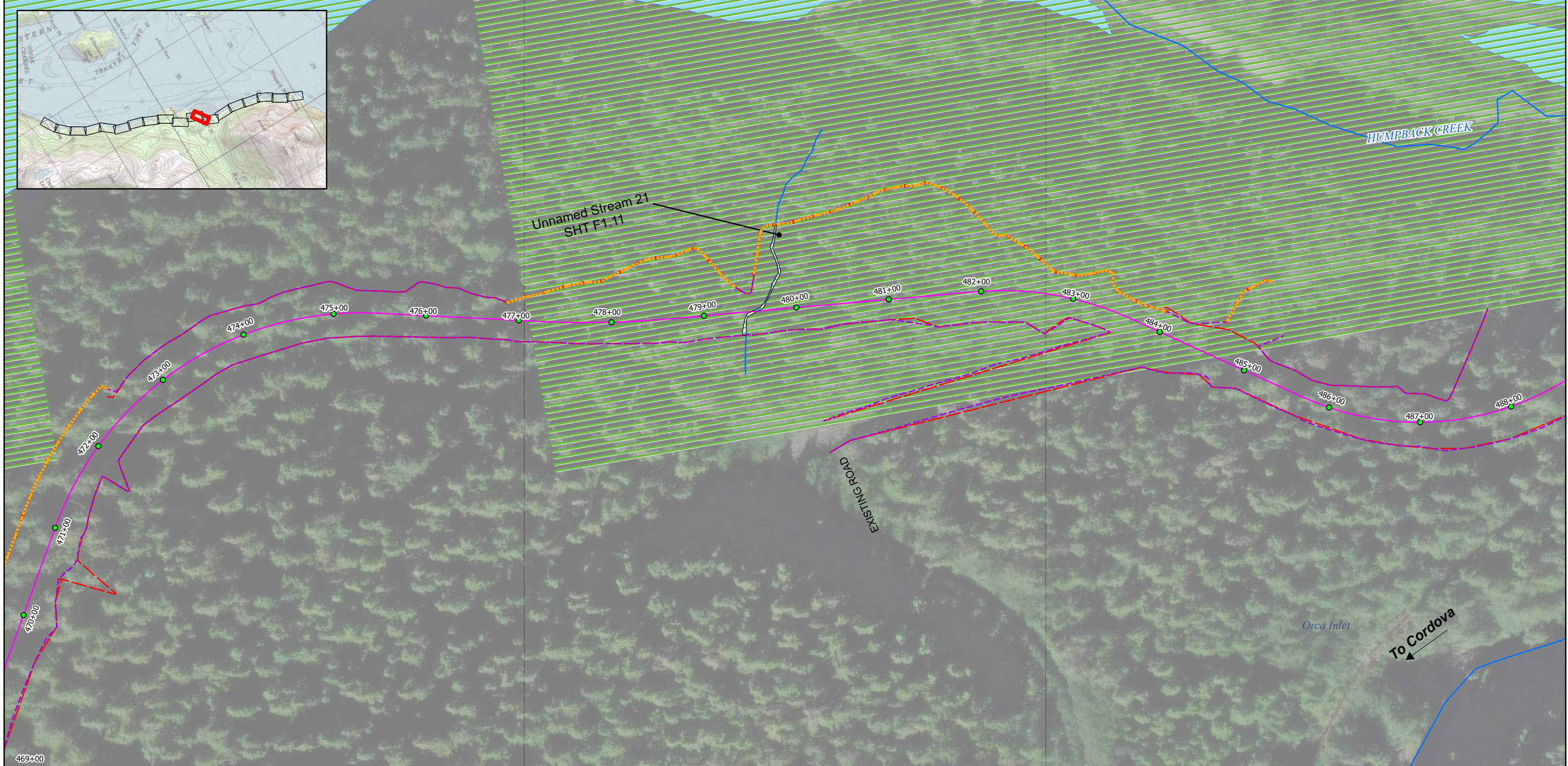


LAT., LONG. OF SHEP. PT.:  
**60 37' 51.45" N**  
**145 40' 18.82" W**  
**Sheet 11 of 19**  
**November 2025**

- Legend**
- 2025\_Fill\_Oct1
  - 2025\_Cut\_Oct1
  - 2025 Feb25 Cut Limits
  - 2025 Feb25 Fill Limits
  - Contour 5M
  - MHW, 11.7 ft
  - HTL\_15.7
  - LINES\_MLLW\_0FT



- FEB 2025 Alignment Impacts**
- 02142025\_Stream\_Impacts
  - 2025\_Subtidal\_Impacts
  - 2025\_Intertidal\_Impacts
  - 2024\_Eelgrass\_ALL
  - Wetlands
- 9/17/2025 Alignment Impacts**
- 09172025\_Stream\_Impacts
  - 09172025\_Intertidal\_Impacts
  - 09172025-Subtidal\_Impacts



**SHEPARD POINT OIL SPILL  
RESPONSE FACILITY PROJECT**  
 APPLICANT: NATIVE VILLAGE OF EYAK  
 FILE NO.: POA-1994-1014, ORCA INLET  
 PROPOSED ACTIVITY:  
**LINEAR TRANSPORTATION PROJECT**  
**ORCA INLET**  
**PRINCE WILLIAM SOUND**  
 NAD 1983 StatePlane Alaska FIPS 5003 US Feet



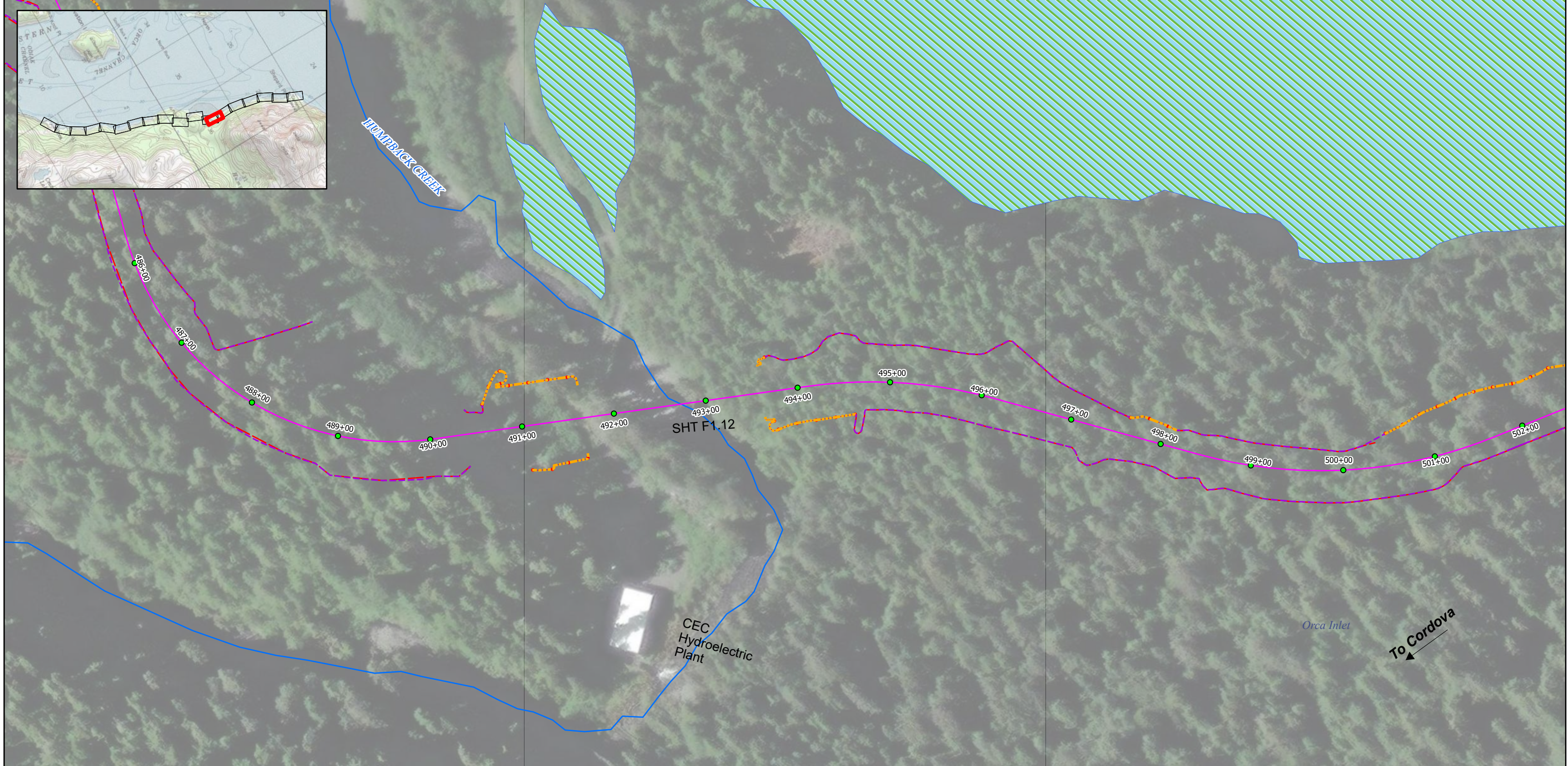
LAT., LONG. OF SHEP. PT.:  
**60 37' 51.45" N**  
**145 40' 18.82" W**  
**Sheet 12 of 19**  
**November 2025**



- Legend**
- 2025\_Fill\_Oct1
  - 2025\_Cut\_Oct1
  - 2025 Feb25 Cut Limits
  - 2025 Feb25 Fill Limits
  - Contour 5M
  - MHW, 11.7 ft
  - HTL\_15.7
  - LINES\_MLLW\_0FT

2025\_Stations\_Oct  
 ●  
 July2021\_Streams  
 —

- FEB 2025 Alignment Impacts**
- 02142025\_Stream\_Impacts
  - 2025\_Subtidal\_Impacts
  - 2025\_Intertidal\_Impacts
  - 2024\_Eelgrass\_ALL
  - Wetlands
- 9/17/2025 Alignment Impacts**
- 09172025\_Stream\_Impacts
  - 09172025\_Intertidal\_Impacts
  - 09172025-Subtidal\_Impacts



**SHEPARD POINT OIL SPILL  
RESPONSE FACILITY PROJECT**  
 APPLICANT: NATIVE VILLAGE OF EYAK  
 FILE NO.: POA-1994-1014, ORCA INLET  
 PROPOSED ACTIVITY:  
**LINEAR TRANSPORTATION PROJECT**  
**ORCA INLET**  
**PRINCE WILLIAM SOUND**  
 NAD 1983 StatePlane Alaska FIPS 5003 US Feet

**Bristol**  
 ENGINEERING SERVICES COMPANY, LLC

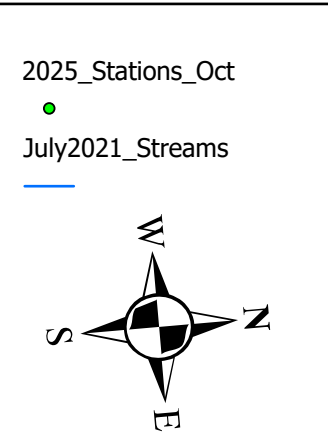
Native Village of Eyak

**MSE** Midnight Sun ENVIRONMENTAL, LLC

LAT., LONG. OF SHEP. PT.:  
**60 37' 51.45" N**  
**145 40' 18.82" W**  
**Sheet 13 of 19**  
**November 2025**

90 45 0 90  
 Feet

- Legend**
- 2025\_Fill\_Oct1
  - 2025\_Cut\_Oct1
  - 2025 Feb25 Cut Limits
  - 2025 Feb25 Fill Limits
  - Contour 5M
  - MHW, 11.7 ft
  - HTL\_15.7
  - LINES\_MLLW\_0FT



- FEB 2025 Alignment Impacts**
- 02142025\_Stream\_Impacts
  - 2025\_Subtidal\_Impacts
  - 2025\_Intertidal\_Impacts
  - 2024\_Eelgrass\_ALL
  - Wetlands
- 9/17/2025 Alignment Impacts**
- 09172025\_Stream\_Impacts
  - 09172025\_Intertidal\_Impacts
  - 09172025-Subtidal\_Impacts



**SHEPARD POINT OIL SPILL  
RESPONSE FACILITY PROJECT**  
 APPLICANT: NATIVE VILLAGE OF EYAK  
 FILE NO.: POA-1994-1014, ORCA INLET  
 PROPOSED ACTIVITY:  
**LINEAR TRANSPORTATION PROJECT**  
**ORCA INLET**  
**PRINCE WILLIAM SOUND**  
 NAD 1983 StatePlane Alaska FIPS 5003 US Feet



LAT., LONG. OF SHEP. PT.:  
**60 37' 51.45" N**  
**145 40' 18.82" W**  
**Sheet 14 of 19**  
**November 2025**

- Legend**
- 2025\_Fill\_Oct1
  - 2025\_Cut\_Oct1
  - 2025 Feb25 Cut Limits
  - 2025 Feb25 Fill Limits
  - Contour 5M
  - MHW, 11.7 ft
  - HTL\_15.7
  - LINES\_MLLW\_0FT



- FEB 2025 Alignment Impacts**
- 02142025\_Stream\_Impacts
  - 2025\_Subtidal\_Impacts
  - 2025\_Intertidal\_Impacts
  - 2024\_Eelgrass\_ALL
  - Wetlands
- 9/17/2025 Alignment Impacts**
- 09172025\_Stream\_Impacts
  - 09172025\_Intertidal\_Impacts
  - 09172025-Subtidal\_Impacts



**SHEPARD POINT OIL SPILL  
RESPONSE FACILITY PROJECT**  
 APPLICANT: NATIVE VILLAGE OF EYAK  
 FILE NO.: POA-1994-1014, ORCA INLET  
 PROPOSED ACTIVITY:  
**LINEAR TRANSPORTATION PROJECT**  
**ORCA INLET**  
**PRINCE WILLIAM SOUND**  
 NAD 1983 StatePlane Alaska FIPS 5003 US Feet

**Bristol**  
 ENGINEERING SERVICES COMPANY, LLC

Native Village of Eyak

**MSE** Midnight Sun ENVIRONMENTAL, LLC

LAT., LONG. OF SHEP. PT.:  
 60 37' 51.45" N  
 145 40' 18.82" W  
**Sheet 15 of 19**  
 November 2025

90 45 0 90  
 Feet

**Legend**

- 2025\_Fill\_Oct1
- 2025\_Cut\_Oct1
- 2025 Feb25 Cut Limits
- 2025 Feb25 Fill Limits
- Contour 5M
- MHW, 11.7 ft
- HTL\_15.7
- LINES\_MLLW\_0FT

2025\_Stations\_Oct

July2021\_Streams

**FEB 2025 Alignment Impacts**

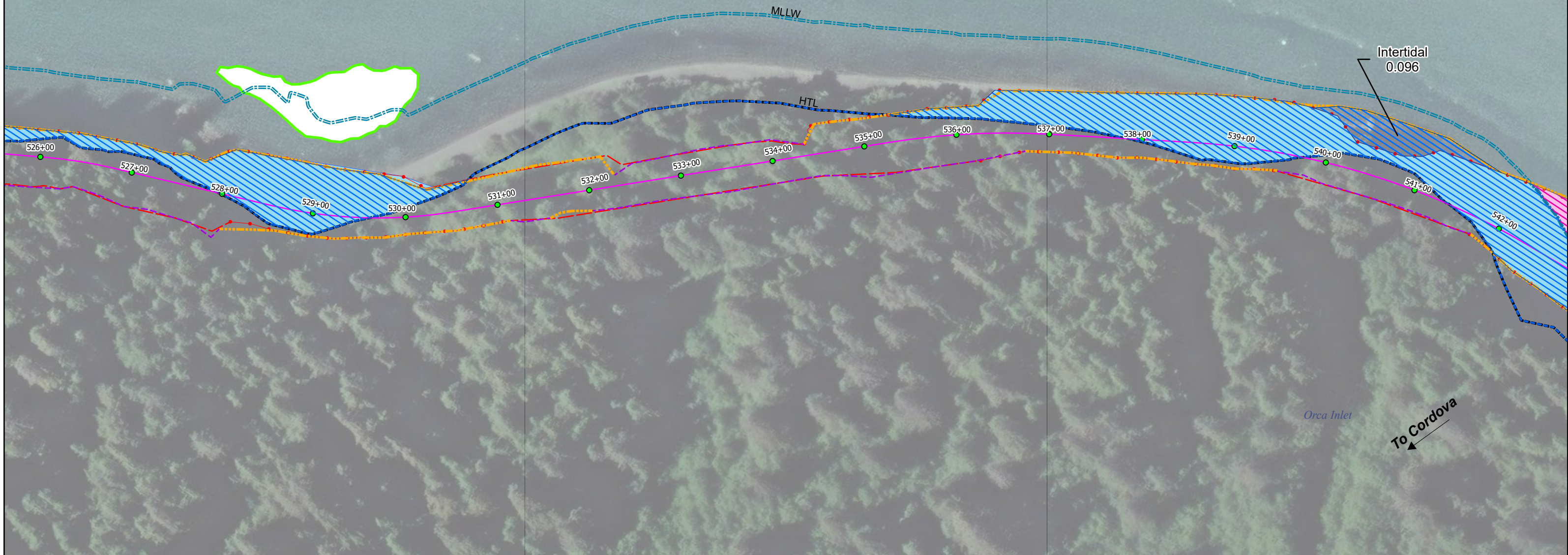
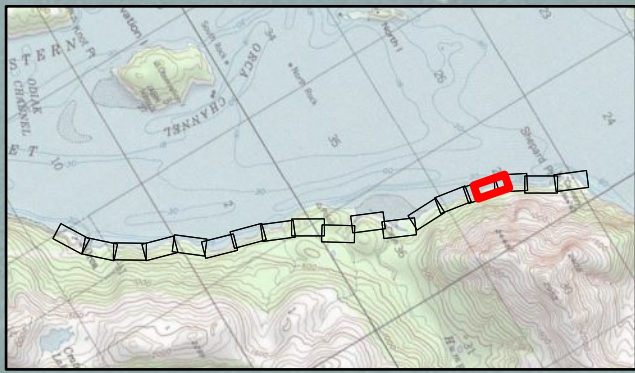
- 02142025\_Stream\_Impacts
- 2025\_Subtidal\_Impacts
- 2025\_Intertidal\_Impacts
- 2024\_Eelgrass\_ALL
- Wetlands

**9/17/2025 Alignment Impacts**

- 09172025\_Stream\_Impacts
- 09172025\_Intertidal\_Impacts
- 09172025-Subtidal\_Impacts

Orca Inlet

To Cordova



**SHEPARD POINT OIL SPILL  
RESPONSE FACILITY PROJECT**  
 APPLICANT: NATIVE VILLAGE OF EYAK  
 FILE NO.: POA-1994-1014, ORCA INLET  
 PROPOSED ACTIVITY:  
**LINEAR TRANSPORTATION PROJECT**  
**ORCA INLET**  
**PRINCE WILLIAM SOUND**  
 NAD 1983 StatePlane Alaska FIPS 5003 US Feet



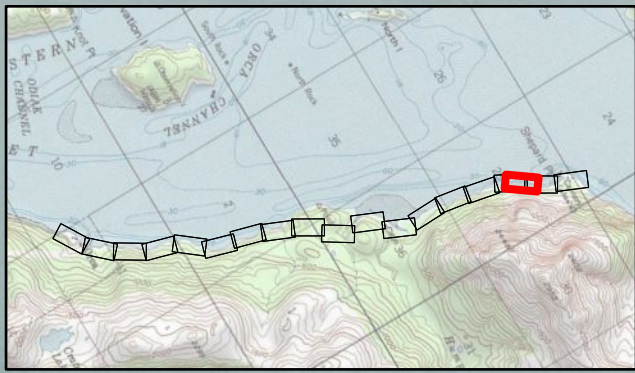
LAT., LONG. OF SHEP. PT.:  
**60 37' 51.45" N**  
**145 40' 18.82" W**  
**Sheet 16 of 19**  
**November 2025**



- Legend**
- 2025\_Fill\_Oct1
  - 2025\_Cut\_Oct1
  - 2025 Feb25 Cut Limits
  - 2025 Feb25 Fill Limits
  - Contour 5M
  - MHW, 11.7 ft
  - HTL\_15.7
  - LINES\_MLLW\_0FT



- FEB 2025 Alignment Impacts**
- 02142025\_Stream\_Impacts
  - 2025\_Subtidal\_Impacts
  - 2025\_Intertidal\_Impacts
  - 2024\_Eelgrass\_ALL
  - Wetlands
- 9/17/2025 Alignment Impacts**
- 09172025\_Stream\_Impacts
  - 09172025\_Intertidal\_Impacts
  - 09172025-Subtidal\_Impacts



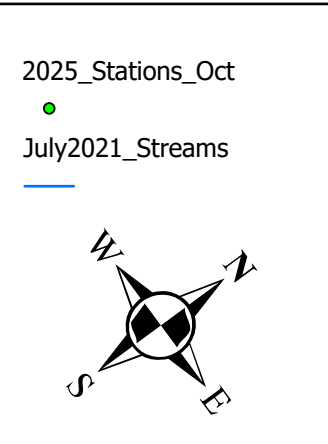
**SHEPARD POINT OIL SPILL  
RESPONSE FACILITY PROJECT**  
 APPLICANT: NATIVE VILLAGE OF EYAK  
 FILE NO.: POA-1994-1014, ORCA INLET  
 PROPOSED ACTIVITY:  
**LINEAR TRANSPORTATION PROJECT**  
**ORCA INLET**  
**PRINCE WILLIAM SOUND**  
 NAD 1983 StatePlane Alaska FIPS 5003 US Feet



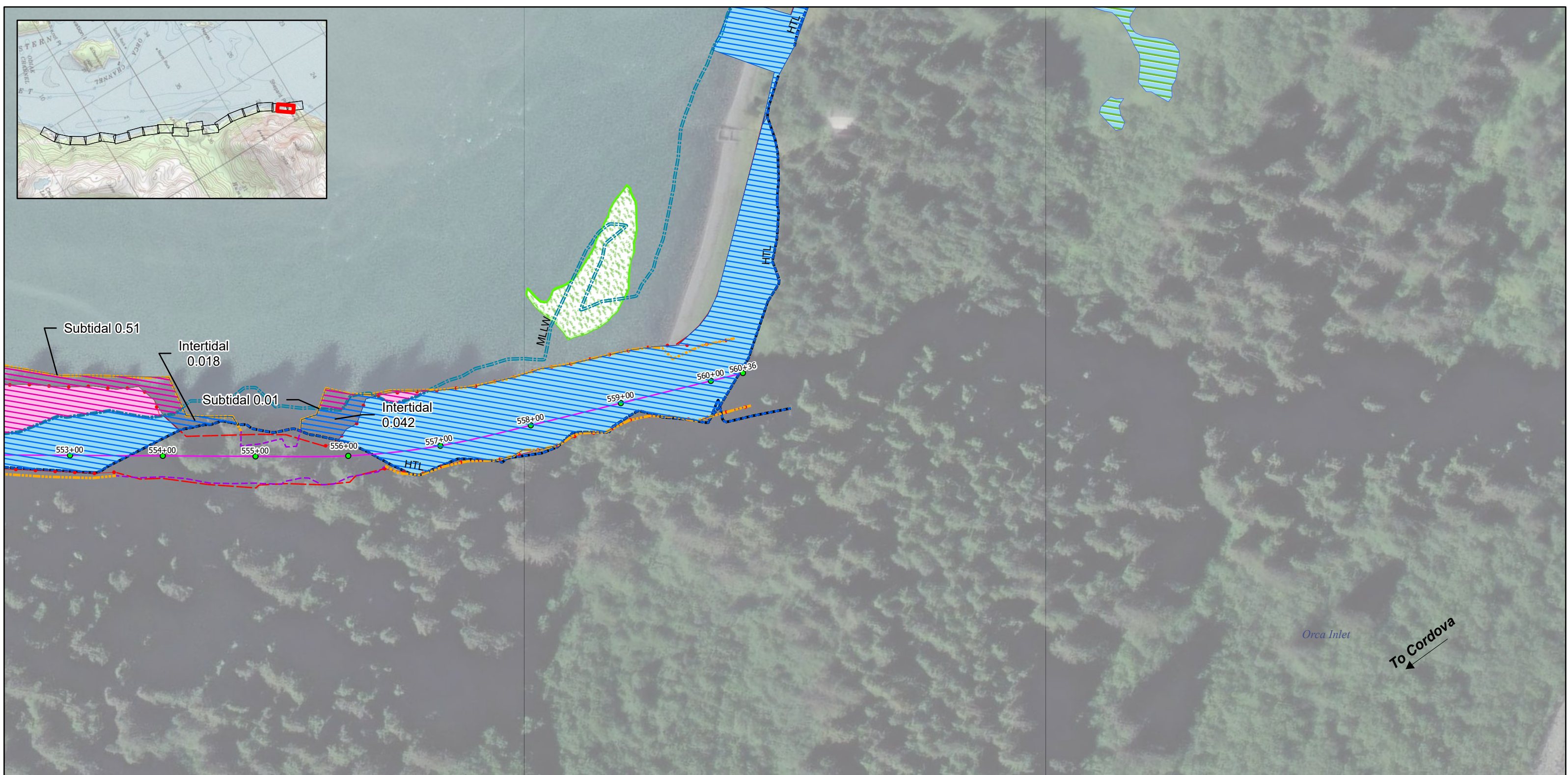
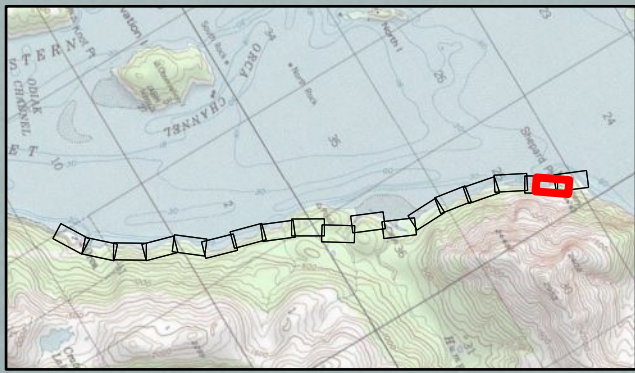
LAT., LONG. OF SHEP. PT.:  
**60 37' 51.45" N**  
**145 40' 18.82" W**  
**Sheet 17 of 19**  
**November 2025**

90 45 0 90  
 Feet

- Legend**
- 2025\_Fill\_Oct1
  - 2025\_Cut\_Oct1
  - 2025 Feb25 Cut Limits
  - 2025 Feb25 Fill Limits
  - Contour 5M
  - MHW, 11.7 ft
  - HTL\_15.7
  - LINES\_MLLW\_0FT



- FEB 2025 Alignment Impacts**
- 02142025\_Stream\_Impacts
  - 2025\_Subtidal\_Impacts
  - 2025\_Intertidal\_Impacts
  - 2024\_Eelgrass\_ALL
  - Wetlands
- 9/17/2025 Alignment Impacts**
- 09172025\_Stream\_Impacts
  - 09172025\_Intertidal\_Impacts
  - 09172025-Subtidal\_Impacts



**SHEPARD POINT OIL SPILL  
RESPONSE FACILITY PROJECT**  
 APPLICANT: NATIVE VILLAGE OF EYAK  
 FILE NO.: POA-1994-1014, ORCA INLET  
 PROPOSED ACTIVITY:  
**LINEAR TRANSPORTATION PROJECT**  
**ORCA INLET**  
**PRINCE WILLIAM SOUND**  
 NAD 1983 StatePlane Alaska FIPS 5003 US Feet

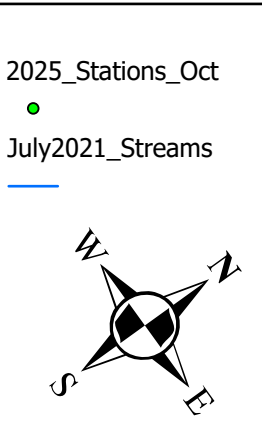


LAT., LONG. OF SHEP. PT.:  
**60 37' 51.45" N**  
**145 40' 18.82" W**  
**Sheet 18 of 19**  
**November 2025**

90 45 0 90  
 Feet



- Legend**
- 2025\_Fill\_Oct1
  - 2025\_Cut\_Oct1
  - 2025 Feb25 Cut Limits
  - 2025 Feb25 Fill Limits
  - Contour 5M
  - MHW, 11.7 ft
  - HTL\_15.7
  - LINES\_MLLW\_0FT



- FEB 2025 Alignment Impacts**
- 02142025\_Stream\_Impacts
  - 2025\_Subtidal\_Impacts
  - 2025\_Intertidal\_Impacts
  - 2024\_Eelgrass\_ALL
  - Wetlands
- 9/17/2025 Alignment Impacts**
- 09172025\_Stream\_Impacts
  - 09172025\_Intertidal\_Impacts
  - 09172025-Subtidal\_Impacts



**SHEPARD POINT OIL SPILL  
RESPONSE FACILITY PROJECT**  
 APPLICANT: NATIVE VILLAGE OF EYAK  
 FILE NO.: POA-1994-1014, ORCA INLET  
 PROPOSED ACTIVITY:  
**LINEAR TRANSPORTATION PROJECT**  
**ORCA INLET**  
**PRINCE WILLIAM SOUND**  
 NAD 1983 StatePlane Alaska FIPS 5003 US Feet

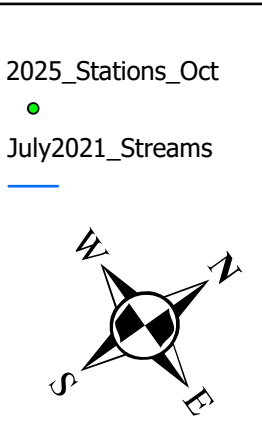


LAT., LONG. OF SHEP. PT.:  
**60 37' 51.45" N**  
**145 40' 18.82" W**  
**Sheet 19 of 19**  
**November 2025**

90 45 0 90  
 Feet



- Legend**
- 2025\_Fill\_Oct1
  - 2025\_Cut\_Oct1
  - 2025 Feb25 Cut Limits
  - 2025 Feb25 Fill Limits
  - Contour 5M
  - MHW, 11.7 ft
  - HTL\_15.7
  - LINES\_MLLW\_0FT



- FEB 2025 Alignment Impacts**
- 02142025\_Stream\_Impacts
  - 2025\_Subtidal\_Impacts
  - 2025\_Intertidal\_Impacts
  - 2024\_Eelgrass\_ALL
  - Wetlands
- 9/17/2025 Alignment Impacts**
- 09172025\_Stream\_Impacts
  - 09172025\_Intertidal\_Impacts
  - 09172025-Subtidal\_Impacts