



Reclamation Plan Amendment #1

For No. A20243253RPA



**J T Mining Inc. – Johnson Tract Critical Metals Project
Portal Reclamation, Dewatering Pipeline, and Rapid Infiltration Basin (RIB)**

Date: March 18, 2026

Table of Contents

Acronym List.....	iv
1 Introduction.....	1
1.1 Project Background.....	1
1.2 Purpose.....	1
1.2 Operator and Owner Information.....	2
1.2.1 Operator Corporate Information.....	2
1.2.2 Operator Corporate Officer.....	2
1.2.3 Operator Contact Person.....	2
1.2.4 Operator Alaska Registered Agent.....	2
1.2.5 Owner Corporate Information.....	2
2 Reclamation Methods.....	3
2.1 Portal Reclamation.....	3
2.1.1 Structural Plug.....	3
2.1.2 Geochemical Considerations.....	5
2.1.3 Development Rock Volume and Handling (11 AAC 97.310(b)(5)).....	7
2.2 Dewatering Pipeline.....	7
2.3 Rapid Infiltration Basin (RIB).....	9
2.4 Disturbance Acreages.....	10
3 Post-Reclamation Requirements.....	10
4 Reclamation Schedule, Cost Estimate, and Financial Assurance.....	11
4.1 Reclamation Schedule.....	11
4.2 Financial Assurance.....	11
References.....	I
Appendix A Basis of Estimate Report for the Reclamation and Post-Reclamation Costs.....	II
Introduction.....	III
Reclamation Cost Summary Tab.....	IV
Cost Overview Tab.....	IV
RSMMeans Data Tab.....	V
Quantities Tab.....	V
Appendix B Geochemical Reports.....	VI

Table 1 Disturbance Accounting for Additional Facilities (11 AAC 97.310(b)(4)) 10
Table 2 Reclamation Cost Estimate 12

Figure 1 Portal Plug Location4
Figure 2 Portal Plug Design5
Figure 3 Approximate Dewatering Pipeline and RIB.....8
Figure 4 Rapid Infiltration Basin Design.....9

Acronym List

Acronym	Definition	Used In
AAC	Alaska Administrative Code	Reclamation Plan
ADNR	Alaska Department of Natural Resources	Reclamation Plan
AK	Alaska (state abbreviation)	Reclamation Plan
ANC	Anchorage	Cost Workbook
ANCSA	Alaska Native Claims Settlement Act	Reclamation Plan
ARD	Acid Rock Drainage	Reclamation Plan
AS	Alaska Statutes	Reclamation Plan
ASTM	ASTM International (standards organization)	Cost Workbook
BCY	Bank cubic yard (in-place cubic yard)	Cost Workbook
CAT	Caterpillar	Cost Workbook
CEO	Chief Executive Officer	Reclamation Plan
CF	Cubic feet	Cost Workbook
CIRI	Cook Inlet Region, Inc.	Reclamation Plan; Cost Workbook
CY	Cubic yards	Cost Workbook
FOS	Factor of Safety	Reclamation Plan
ft	foot	Cost Workbook
HDPE	High-density polyethylene	Reclamation Plan; Cost Workbook
JT	Johnson Tract (project/deposit shorthand; no space)	Reclamation Plan; Cost Workbook
J T	J T Mining Inc. (legal company name style with space)	Reclamation Plan
lb	pound	Cost Workbook
LCNPP	Lake Clark National Park and Preserve	Reclamation Plan
LF	Linear feet	Cost Workbook
ML	Metal leaching	Reclamation Plan
ML/ARD	Metal leaching / acid rock drainage	Reclamation Plan
non-PAG	Non-potentially acid generating (rock classification)	Reclamation Plan
OPN	Open Shop (RSM means labor designation)	Cost Workbook
PAG	Potentially acid generating (rock classification)	Reclamation Plan
QFP	Quartz-feldspar porphyry (geologic unit)	Reclamation Plan
RIB	Rapid Infiltration Basin	Reclamation Plan; Cost Workbook
RPA	Reclamation Plan Approval (approval number suffix)	Cost Workbook
SF	Square feet	Cost Workbook
SRCE	Standardized Reclamation Cost Estimator (Nevada SRCE)	Cost Workbook
SY	Square yards	Cost Workbook
USA	United States of America	Reclamation Plan
USD	United States dollar(s)	Reclamation Plan
VP	Vice President	Reclamation Plan

1 Introduction

1.1 Project Background

The Johnson Tract Critical Metals Project (the Project) is a polymetallic epithermal breccia (gold-zinc-copper-silver-lead) advance exploration project located in southcentral Alaska, USA. Contango Ore, Inc. (Contango Ore) is currently conducting advanced exploration activities at the project to evaluate the potential for a high-grade underground mine through its subsidiary J T Mining, Inc. (J T Mining). J T Mining was formerly owned by High Gold Mining Inc, and both companies were acquired by Contango Ore Inc. on July 2, 2024.

The Project lies near tidewater, approximately 9 miles west of Tuxedni Channel on the west side of Cook Inlet. The nearest community is Ninilchik, located about 37 miles east across Cook Inlet; Anchorage is 124 miles to the northeast.

The Project area encompasses 20,942 acres of land owned by Cook Inlet Region, Inc. (CIRI), a private inholding within Lake Clark National Park and Preserve (LCNPP). J T Mining holds a Lease Agreement with CIRI, one of the 12 Alaska Native Regional Corporations established under the Alaska Native Claims Settlement Act (ANCSA). CIRI selected the Johnson Tract lands under ANCSA and holds both mineral and surface rights, along with port and transportation easements across adjacent LCNPP lands to support mineral development.

The Project area consists of two land blocks. On the South Tract, CIRI owns both the surface and subsurface estates. On the North Tract, CIRI owns the subsurface mineral estate with guaranteed access, while the National Park Service retains surface ownership. The Project is situated within the Chigmit Mountains along the southern margin of the Alaska Range, with elevations ranging from 197 to 3,937 feet. The Johnson Tract Deposit (JT Deposit) is located at an elevation of 1,755 feet. The center of the South Tract, near the Project camp, is approximately located at 60.097844° N, 152.943951° W (NAD83).

An underground exploration tunnel and portal are proposed on the South Tract. Subsurface access is required because the geometry of the JT Deposit cannot be fully evaluated from surface drilling alone. The tunnel will provide direct access to the mineralized zone and support year-round exploration activities. Groundwater and pore water encountered during tunnel excavation will be managed, controlled, and discharged through a Rapid Infiltration Basin (RIB).

1.2 Purpose

J T Mining is using a two-stage approach to the permitting and developing of the Project, with Stage I being the development of the surface access (airstrip and road to a future exploration portal site), and Stage II being future development of limited underground access to provide a platform for definition drilling of the JT Deposit. For Stage I, CIRI elected to leave the road, portal pad, laydowns, and airstrip in-place for the long-term, so the reclamation and associated costs for these facilities are not part of the overall reclamation plan.

The existing Reclamation Plan Approval (A20243253RPA, issued April 26, 2024) is limited to Stage I, and this Amendment provides an update for Stage II of the Project; incorporating reclamation activities for the portal closure, the dewatering pipeline from the portal to the rapid infiltration basin (RIB), and the RIB itself. The Amendment is structured to be appended to the existing plan and follows the regulatory requirements of 11 AAC 97 (Alaska Department of Natural Resources Reclamation Standards).

1.2 Operator and Owner Information

1.2.1 Operator Corporate Information

Business Name: J T Mining Inc. (a wholly owned subsidiary of Contango Ore Inc.)

Address: 516 2nd Avenue, Suite 401 Fairbanks, Alaska 99701

Phone: 907-388-7770

President: Rick Van Nieuwenhuyse

1.2.2 Operator Corporate Officer

Name: Rick Van Nieuwenhuyse

Title: President, CEO, Director

Telephone: 1.907.388.7770

Email: rickvann@contangoore.com

1.2.3 Operator Contact Person

Name: David Larimer

Title: VP Exploration

Telephone: 1.907.388.7770

Email: dave.larimer@contangoore.com

1.2.4 Operator Alaska Registered Agent

Name: Corporation Service Company

Address: 8585 Old Dairy Road, Suite 208, Juneau, AK 99801

Phone: 1-800-927-9800

1.2.5 Owner Corporate Information

Name: Cook Inlet Region Inc.

Address: 725 E. Fireweed Lane #800, Anchorage, AK 99503

Phone: 907-274-8638

Contact: Chait Borade, Director, Land & resources

2 Reclamation Methods

2.1 Portal Reclamation

2.1.1 Structural Plug

Reclamation of the portal consists of constructing a reinforced concrete/shotcrete plug consistent with the design drawings and installation instructions provided.

The portal plug is designed to fully prevent seepage from the underground exploration tunnel. No seepage is permitted. Hydrogeological investigations indicate that the tunnel is expected to remain dry to approximately 300 feet from the portal entrance (Piteau, 2025). Based on these findings, the portal plug is positioned 164 feet from the portal entrance to ensure it intercepts and retains any groundwater that may enter the tunnel. The plug design has a Factor of Safety (FOS) of 3.9 showing the design is very stable and there will be no seepage over time (Figure 1). Key elements include installation of #6 Dywidag rock anchors, #6 rebar reinforcement, burlap shotcrete backing, and a 3000-psi concrete plug approximately 30 ft in length.

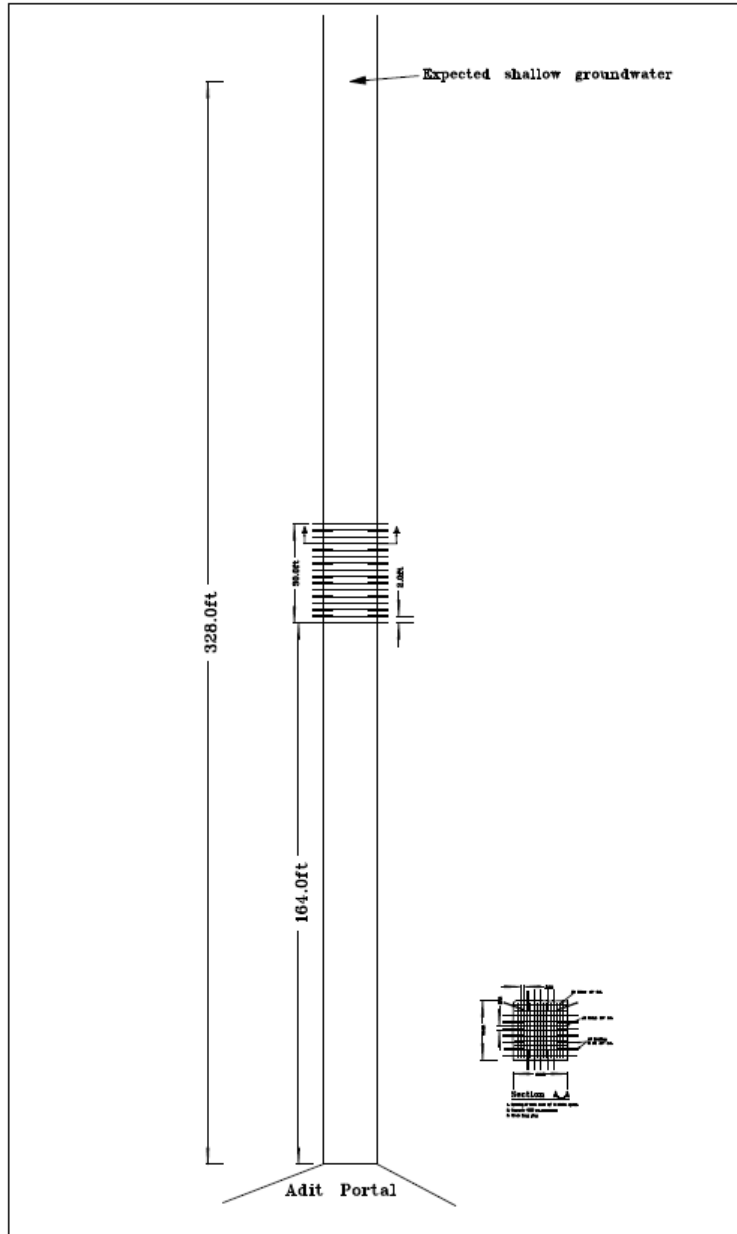


Figure 1 Portal Plug Location

Construction Summary (Figure 2):

1. Install Dywidag anchors on 2-ft centers around perimeter; embed ~3 ft into competent rock.
2. Install vertical and horizontal #6 rebar per detail drawings.
3. Attach burlap backing to rebar to enhance shotcrete adhesion.
4. Apply shotcrete, maintaining 6–8 inches clearance for next ring installation.
5. Repeat installation of rebar/anchors/shotcrete for approximately 16 rings to achieve 30-ft plug.
6. Complete final shotcrete layer, cure, and document final installation.

7. Install welded gate at entrance to the portal. The gate will allow access for annual inspections but prevent access to the general public.

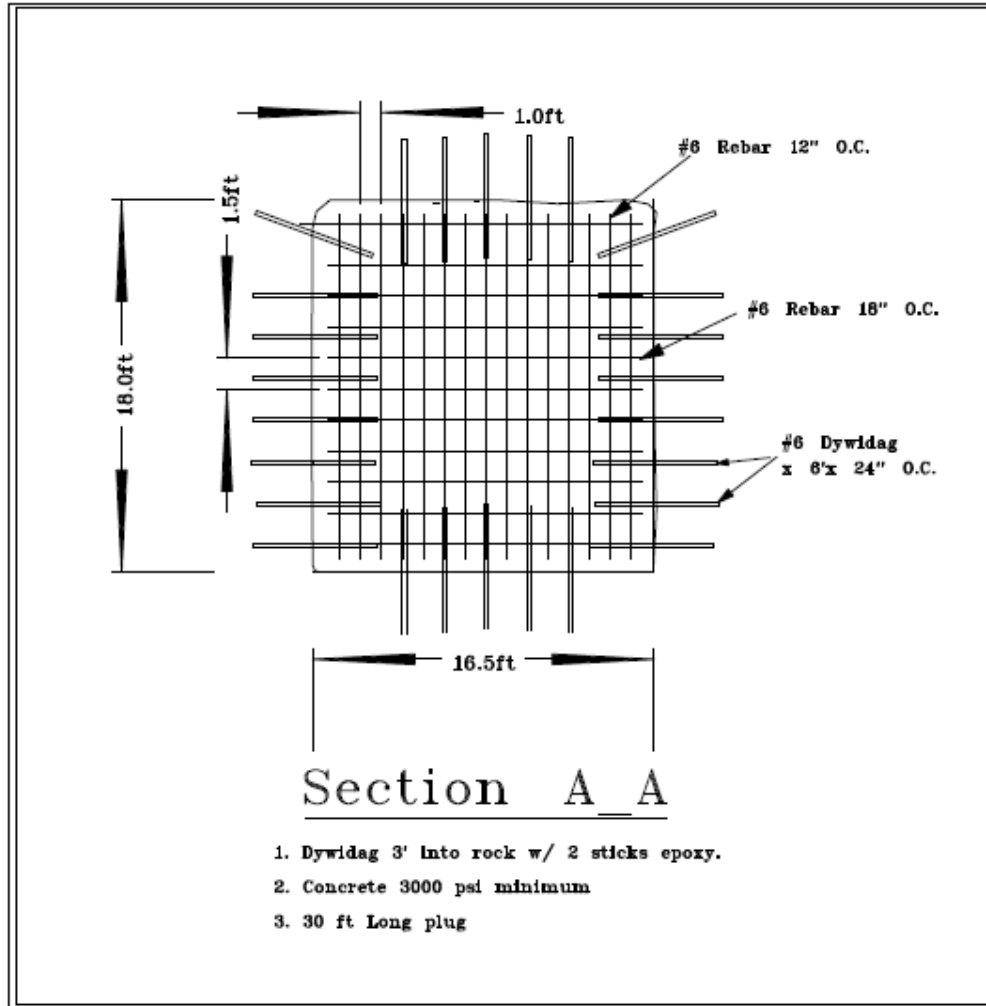


Figure 2 Portal Plug Design

2.1.2 Geochemical Considerations

Although the portal plug is engineered to fully isolate groundwater from the receiving environment during closure, information on the Project’s acid rock drainage and metal leaching potential is provided below for completeness and transparency.

Based on current design and geochemical characterization, no water quality impacts are anticipated from the underground exploration tunnel during operations or following final reclamation and closure.

Project Geology and Hydrogeology

The JT Deposit is a Jurassic-age polymetallic epithermal breccia (gold-zinc-copper-silver-lead) deposit hosted within volcanoclastic rocks. Mineralization occurs in southeast-dipping

tuffs and sediments of the lower Jurassic Talkeetna Formation. A dacite quartz-feldspar porphyry (QFP) unit forms the southeastern boundary of the mineralized zone. These two geologic domains are separated by the Dacite Fault, which limits or precludes groundwater flow between the formations (Piteau, 2025).

Measured groundwater elevations within the dacite QFP are approximately 165 feet (50 meters) higher than those in the JT Deposit and respond rapidly to precipitation events. In contrast, groundwater levels within the mineralized zone show no response to precipitation, indicating little to no hydraulic communication across the Dacite Fault (Piteau 2025). Hydrogeological information is presented in Appendix B .

Given the demonstrated hydraulic separation across the Dacite Fault, groundwater from the mineralized zone is not expected to migrate into the dacite QFP groundwater domain. While localized recharge within the dacite QFP may flow toward the fault, the available data indicate that groundwater in the mineralized zone will not enter the development area.

The proposed underground exploration tunnel would be developed entirely within the dacite QFP unit of the Talkeetna Formation. Accordingly, interaction that would result in mineralized groundwater entering the development area is not expected.

Development Rock (Dacite QFP)

The dacite QFP unit is characterized as non-potentially acid generating (non-PAG) based on geochemical testing, and the underground exploration tunnel will be entirely developed within this non-PAG lithology. As a result, acid generation within the underground workings or from associated development rock is not expected.

Static and kinetic metal leaching and acid rock drainage (ML/ARD) testing has been completed for the dacite QFP unit. A summary of the results is provided below, with supporting technical reports included in Appendix B .

1. **Static Testing** (pHase, 2024): A static test program on 29 samples representative of potential development rock from the proposed exploration drift was conducted by JT Mining in 2022/2023 and reported by pHase in 2024. Static geochemical characterization results of the dacite QFP rock from the proposed development drift indicated low sulphur (<0.1%) with low to moderate carbonate neutralization potential (average 13 kgCaCO₃/t) and no potential for acid generation. Similarly, metal leaching potential from this unit is expected to be negligible.
2. **Kinetic testing** (pHase, 2025a): The static test results were used to design the humidity cell test program including determining the number of humidity cell tests and guiding humidity cell sample selection. Three dacite QFP samples representative of potential development rock from the proposed exploration drift were selected for humidity cell testing. Humidity cell testing on the three samples was initiated in May 2024 and terminated after 40 weeks of testing at

the end of February 2025. Overall, the results indicated circum-neutral to alkaline pH leachate with low to negligible concentrations of all parameters. No humidity cell tests were projected to become acidic, confirming the non-PAG classification of the potential development rock samples. Humidity cell test leachates indicated that the potential for metal leaching from the drift development rock is likely to be low.

Effluent Water Quality

To ensure there were no effects of the dacite QFP on groundwater quality emerging from the underground tunnel, a source terms model was developed (pHase 2025b). Groundwater quality modeling was conducted to estimate the chemistry of groundwater effluent potentially discharging from the developed underground exploration tunnel. The modeling incorporated results from static geochemical testing (pHase, 2024), kinetic testing (pHase, 2025a), groundwater flow modeling (Piteau, 2023), and available groundwater quality data. Modeling results indicate that ambient groundwater quality is the dominant control on predicted effluent chemistry. For the source-term geochemical modeling, inflowing water was represented using the ambient groundwater composition.

2.1.3 Development Rock Volume and Handling (11 AAC 97.310(b)(5))

Underground development for the exploration drift is estimated to generate ~101,000 cubic yards (CY) of development rock including 35% swell, equivalent to ~75,000 CY in-situ. Based on the geologic setting and testing summarized in Appendix B, the development rock will consist of dacite quartz-feldspar porphyry (QFP) characterized as non-PAG, with low to negligible metal leaching potential. During exploration, the bulk of the development rock will be used to construct the portal pad and laydown pad within a defined footprint, graded to stable slopes, contained within erosion-control limits, and kept out of wetlands and surface waters. Development rock may also be used for road construction or maintenance, where appropriate. At closure, any remaining stockpiled rock will be regraded within the portal pad and laydown footprint to stable contours and left in place, consistent with the landowner's election to retain the road and pads for the long term as described in the original reclamation plan; disturbed margins will be stabilized and seeded consistent with Section 2.3.

Estimated tonnage (for 11 AAC 97.310(b)(5)): Using an assumed in-situ density representative of dacite (specific gravity $\approx 2.7 \text{ t/m}^3$), ~75,000 CY equates to $\approx 155,000$ metric tons ($\approx 171,000$ short tons) of development rock.

2.2 Dewatering Pipeline

The dewatering pipeline conveys water from the portal to the Rapid Infiltration Basin (RIB). Installation includes alignment staking, trenching, pipe bedding and backfill, erosion controls, valves, appurtenances, and commissioning testing.

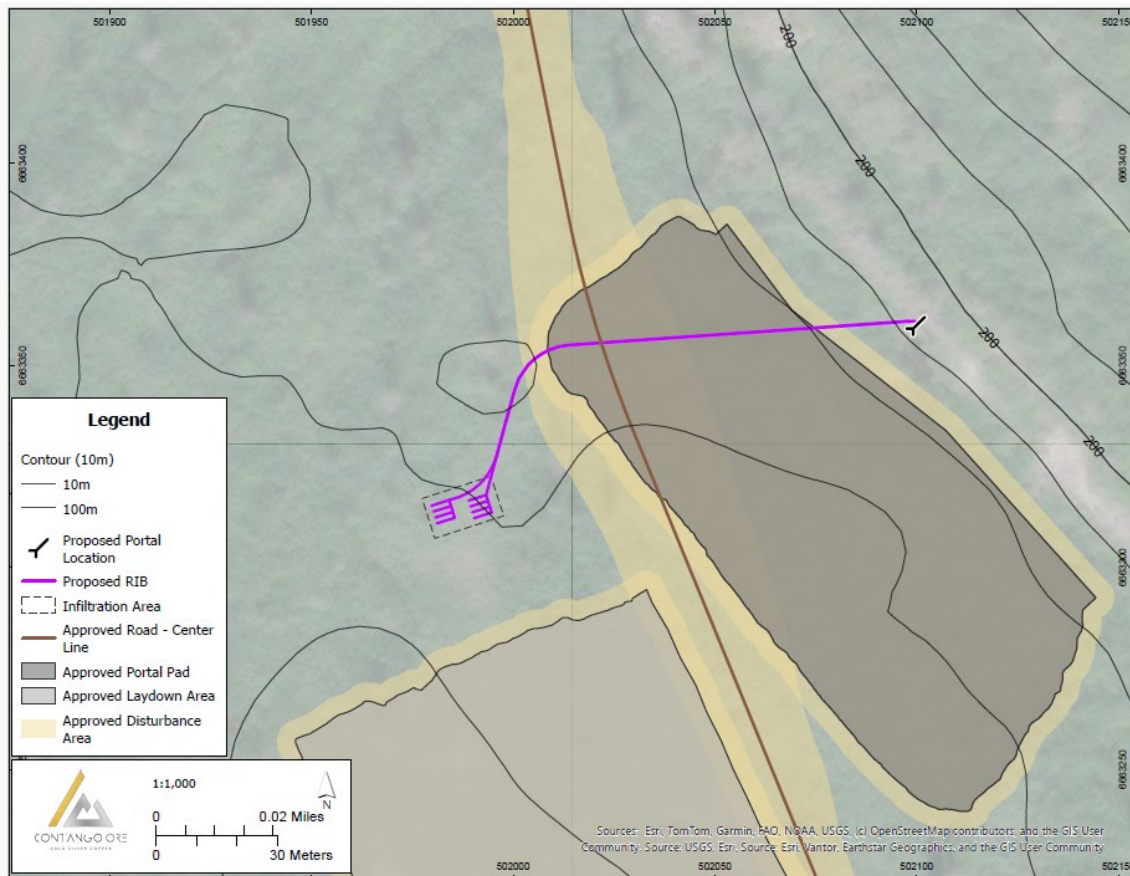


Figure 3 Approximate Dewatering Pipeline and RIB

The dewatering pipeline will be fully removed as part of reclamation. Removal activities include:

- Isolate and drain remaining water from the pipeline at the portal and RIB ends.
- Excavating the pipeline trench to expose the pipe along its alignment.
- Cutting and removing pipe sections; transporting removed pipe to an approved disposal or recycling facility.
- Removing associated appurtenances including valves, cleanouts, anchors, and any energy dissipation structures.
- Backfilling the trench with native materials, compacting in lifts, and grading to match surrounding contours.
- Applying erosion control and surface stabilization using a commercial seed mix approved by the Alaska Plant Materials Center.

2.3 Rapid Infiltration Basin (RIB)

The RIB consists of a header pipe distributing flow into multiple perforated infiltration trenches. Construction includes excavation, pipe placement, drain rock, geotextile, and final grading.

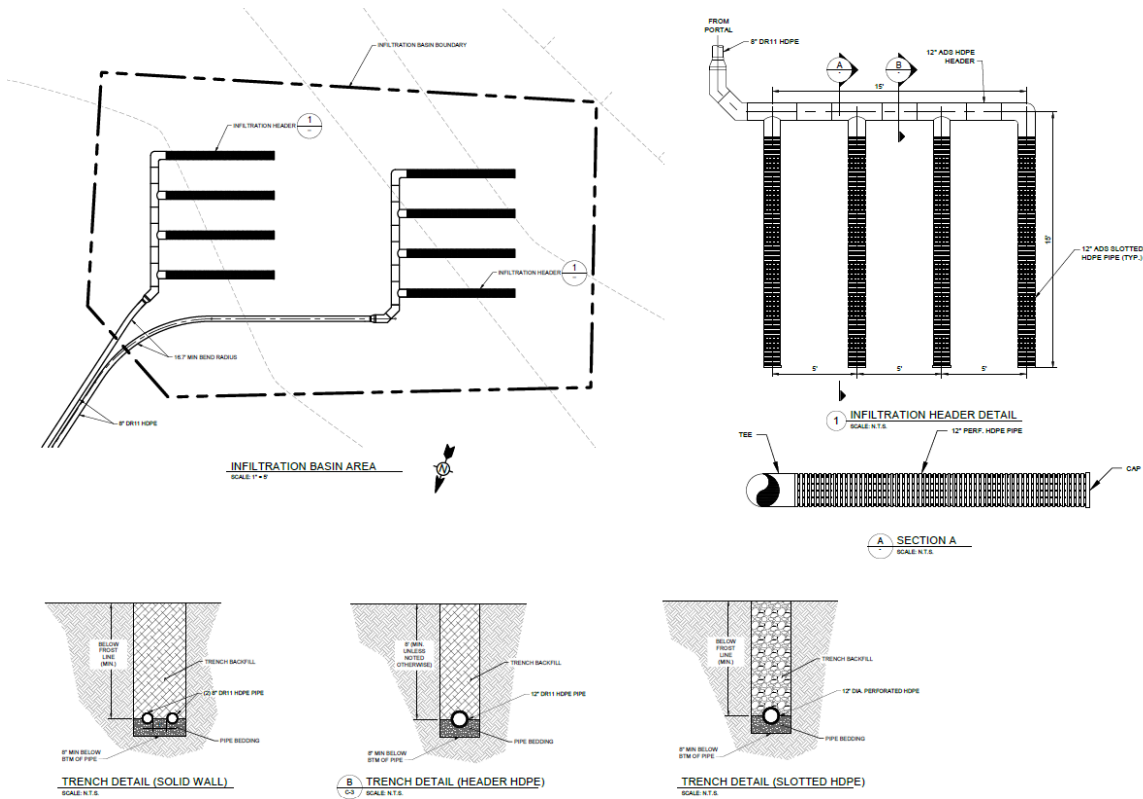


Figure 4 Rapid Infiltration Basin Design

Reclamation of the RIB will consist of fully decommissioning the infiltration system and restoring the area to a stable, naturally revegetating condition. Removal activities include:

- Isolate and drain remaining water from the header and lateral trenches.
- Excavating and exposing the infiltration laterals, including perforated/slotted pipe sections.
- Removing perforated pipes, geotextile fabrics, and drain rock to the extent practical.
- Removing header pipe, valves, cleanouts, and distribution structures.
- Backfilling lateral trenches and header trench with native material and compacting in lifts.
- Regrading the entire RIB footprint to match surrounding contours and eliminate low spots.
- Applying erosion control and stabilizing soils using the original seed mix approved by the Alaska Plant Materials Center.

2.4 Disturbance Acreages

Table 1 Disturbance Accounting for Additional Facilities (11 AAC 97.310(b)(4))

Facility	Basis / Assumption	Gross Disturbance	Reclaimed or Remaining at Closure
Portal Pad	Final pad flat area	1.97 ac	Remaining (CIRI-elected long-term facility)
Laydown Pad	Final pad flat area	4.4 ac	Remaining (CIRI-elected long-term facility)
Dewatering Pipeline Corridor	Pipeline centerline + 25-ft offset corridor	0.263 ac	Reclaimed
Rapid Infiltration Basin (RIB)	RIB linework + 25-ft offset	0.222 ac	Reclaimed

Notes:

1. The portal pad, laydown pad, and access road are retained facilities per landowner election and existing Plan and thus are not reclaimed under this Amendment;
2. The portal pad serves as the placement area for development rock and the platform for the portal plug.
3. The laydown pad is comprised of remaining development rock and material from the material sites discussed in the original reclamation plan.

3 Post-Reclamation Requirements

Post-reclamation requirements apply to all reclaimed components, including the portal plug, dewatering pipeline corridor, and RIB. The purpose of these requirements is to ensure that disturbed areas remain stable, revegetate naturally, and do not pose long-term risks to water quality, wildlife, or public safety, consistent with 11 AAC 97 performance standards.

Post-reclamation monitoring will include annual inspection of the portal plug to ensure the plug remains stable and there is no discharge of mine water from the portal. A review of formally disturbed areas of the dewatering pipeline and RIB system to ensure that vegetation is properly established and no erosion is occurring.

4 Reclamation Schedule, Cost Estimate, and Financial Assurance

4.1 Reclamation Schedule

Reclamation activities for the portal, dewatering pipeline, and RIB will be completed after all production operations are complete and the portal is no longer required for site activities. Work will occur during the frost-free season, when ground conditions allow excavation, grading, and revegetation.

Reclamation is expected to be completed within a single field season, with an anticipated total duration of approximately 30 days, assuming mobilization of a small reclamation crew and equipment to the Johnson Tract Project site. This schedule accounts for:

- Construction and installation of the portal structural plug early in the program, once underground access is no longer required.
- Removal of the dewatering pipeline, including drainage, excavation, pipe removal, backfilling, and surface stabilization.
- Decommissioning of the RIB, including removal of infiltration laterals, drain rock, geotextile, header piping, and full regrading of the basin footprint.

Work will be sequenced to maintain safe site access and avoid disturbance to previously reclaimed areas. Once earthwork and removals are complete, all disturbed surfaces will be stabilized and revegetated using the same seed mix specified in the original reclamation plan, approved by the Alaska Plant Materials Center.

If weather or access constraints require deferral of any activities, remaining reclamation will resume during the next available frost-free period. Following completion of physical reclamation, all reclaimed areas will be left in a condition that meets the stable-condition performance standards of 11 AAC 97.200(a)(1). Specifically, reclaimed surfaces will be returned to a condition where waterborne soil erosion is expected to return to pre-mining levels within one year after reclamation is completed, and natural revegetation is reasonably expected to be feasible within five years. These criteria ensure that the site can support natural processes without the need for ongoing monitoring requirements beyond those already included in the approved reclamation plan.

4.2 Financial Assurance

J T Mining Inc. will provide financial assurance consistent with 11 AAC 97 and the statutory requirements of AS 27.19. Under AS 27.19.040, the Alaska Department of Natural Resources (ADNR) requires individual financial assurance in an amount that reflects the reasonable and probable third-party cost to complete all approved reclamation activities in this Amendment (portal plug installation, dewatering pipeline removal and backfilling, RIB decommissioning and regrading, final stabilization/revegetation, and associated close-out tasks).

The financial assurance amount will be based on the total estimated third party cost of completing reclamation of the facilities included in the Amendment, specifically:

- Installation of the portal structural plug;
- Full removal and backfilling of the dewatering pipeline corridor;
- Decommissioning and regrading of the RIB;
- Final stabilization and revegetation using the approved seed mix; and
- Post-reclamation monitoring for a period of five years.

The Reclamation Cost Summary Tab (Table 2) identifies the major cost categories comprising the direct and indirect reclamation costs associated with these activities. The cost estimate reflects reasonable and probable third-party contractor rates and includes Indirect Costs consistent with ADNR guidance and required financial assurance methodology.

Note that costs included in this Cost Estimate are in addition to those in the approved Reclamation Plan (A20243253RPA) and are therefore added to the original approved estimate of \$726 000 USD. However, costs already included in the approved Reclamation Plan, specifically those for camp operations, personnel flights, and annual inspection flights, are not repeated in this Amendment.

2026 Reclamation Estimate - Johnson Tract Project - CIRI Land			
Direct Costs			
Portal Plug			\$ 470,725
Infiltration Basin			\$ 10,375
Reseeding			\$ 43,548
Personnel Mobilization			\$ 12,228
Equipment/Material Mob/Demobilization			\$ 1,501,200
Camp Rental and Support			\$ 14,123
Miscellaneous Labor Costs			\$ 72,080
Miscellaneous Equipment Rental & Fuel			\$ 73,457
Post Reclamation Monitoring			\$ 11,004
SUBTOTAL DIRECT RECLAMATION COSTS			\$ 2,208,741
Indirect Costs			
Engineering Redesign	3% of Direct Costs		\$ 66,262
Liability Insurance ¹	1.5% of Labor Cost		\$ 1,081
Performance and Payment Bonds	2.5% of Direct Costs		\$ 55,219
Contractor Profit ²	6% of Direct Costs		\$ 101,046
Contractor Overhead ²	4% of Direct Cost		\$ 67,364
Contract Admin.	5% of Direct Costs		\$ 110,437
Scope and Bid Contingency	6% of Direct Costs		\$ 132,524
SUBTOTAL INDIRECT COSTS			\$ 533,933
TOTAL ESTIMATED RECLAMATION COSTS			\$ 2,742,673
1. Liability insurance included in labor of Portal Plug, Infiltration Basin, Reseeding Direct Cost			
2. Profit and Overhead included in Portal Plug, Infiltration Basin, Reseeding Direct Cost			

Table 2 Reclamation Cost Estimate

Given the limited scope and straightforward nature of the reclamation activities described in this Amendment, the estimate applies to the lowest allowable percentage for each

Indirect Cost category as provided under ADNR financial assurance guidelines. These indirect costs account for administrative overhead, contractor profit, insurance, contingencies, equipment standby, and other ADNR-required factors necessary to ensure a defensible bond calculation.

All supporting details for the cost estimate - including assumptions, unit rates, equipment needs, labor requirements, camp logistics, reseeding costs, monitoring requirements, and application of ADNR indirect cost categories - is provided in the accompanying Reclamation Cost Estimate Workbook (Excel). Additional narrative explanation is included in Appendix A - Basis of Estimate.

References

Piteau Associates. 2023. Johnson Tract Project, Hydrogeologic Characterization and Adit Inflow Assessment. Prepared for HighGold Mining Inc.

Piteau Associates. 2025. Johnson Tract Project, 2024 Hydrogeologic Characterization. Prepared for Contango Ore Inc.

pHase Geochemistry. 2024. Static Test Results in Support of a Proposed Exploration Drift, Johnson Tract Project - FINAL. Prepared for HighGold Mining Inc.

pHase Geochemistry. 2025a. Humidity Cell Results in Support of a Proposed Exploration Drift, Johnson Tract Project - FINAL. Prepared for HighGold Mining Inc.

pHase Geochemistry. 2025b. Geochemical Source Term Predictions for the Johnson Tract Development Drift. Prepared for J T Mining Inc.

Appendix A Basis of Estimate Report for the Reclamation and Post-Reclamation Costs

Introduction

This Basis of Estimate document describes the assumptions and methodology used to develop the reclamation cost estimate for the J T Mining Inc. – Johnson Tract Project as presented in the Reclamation Plan Amendment. The Amendment covers reclamation requirements associated with the portal closure, removal of the dewatering pipeline, and decommissioning of the Rapid Infiltration Basin (RIB). The estimate is consistent with applicable requirements under 11 AAC 97 (Alaska Department of Natural Resources Reclamation Standards) and is structured to provide supporting detail for each cost category represented in the Reclamation Cost Estimate Workbook (Excel).

The Amendment is limited to those facilities that will be fully reclaimed at project closure that are not included in the approved Reclamation Plan (No. A20243253RPA, March 2024)

- The reinforced concrete/shotcrete portal plug, including installation labor and materials;
- The dewatering pipeline, including isolation, drainage, excavation, removal, backfilling, and surface stabilization; and
- The RIB includes removal of the header pipe, perforated/slotted laterals, geotextile, drain rock, backfill, and regrading.

The reclamation cost estimate incorporates the following key assumptions:

- No camp, equipment, or fuel will be available on-site at the time of reclamation. The costs associated with the camp are included in the previously approved reclamation plan and so are not duplicated here.
- All heavy equipment, operators, support personnel, and fuel must be mobilized to the Johnson Tract site specifically for the reclamation effort. Costs for personnel already included in the approved reclamation plan are not duplicated including camp manager and camp cook.
- No salvage value is assigned to removed materials, including pipeline segments or RIB components.
- All costs reflect third-party contractor rates, as required by ADNR financial assurance policies, and assume no contribution from project-owned equipment or personnel.

The fundamental assumption for the cost estimate is that a small fleet - typically a backhoe/excavator and small support equipment will be mobilized to the site via Hercules aircraft, similar to the approach used in the original reclamation plan. The equipment will be stationed on-site for approximately 30 days, during which the following will be completed:

- Installation of the portal plug
- Full removal and backfilling of the dewatering pipeline corridor
- Full decommissioning and regrading of the RIB

- Site-wide erosion control and revegetation, including application of the original seed mix approved by the Alaska Plant Materials Center

This Basis of Estimate provides the details and assumptions that support each line item in the Excel workbook and ensures the Amendment can be properly evaluated for financial assurance purposes.

Reclamation Cost Summary Tab

The Cost Summary Tab provides the top-level total reclamation cost for the Amendment. It presents:

- Direct Costs for each major reclamation component (portal plug, RIB decommissioning, reseeding, personnel mobilization, equipment/material mobilization, labor, and equipment fuel/rentals).
- Indirect Costs calculated according to ADNR financial assurance guidance, including engineering redesign, liability insurance, bonds, contractor profit, overhead, contract administration, and contingency.
- A final Total Estimated Reclamation Cost used to determine the required financial assurance.

Cost Overview Tab

The Cost Overview Tab provides detailed, itemized calculations for each reclamation component included in the Amendment:

Portal Plug Construction

- Uses RSMeans 2025 Q4 pricing for rock bolts, drillholes, rebar, epoxy, shotcrete, and equipment fuel.
- Calculates labor, material, and equipment costs for plug installation.

RIB Decommissioning

- Includes trench excavation, rough grading, seeding, and pipe removal using RSMeans line items.

Personnel Mobilization

- Costs for operator flights and mechanic flights.

Reseeding

- Includes Alaska Plant Materials Center seed mix costs and labor for application.

Miscellaneous Labor & Camp Support

- Labor costs for mechanics and operators.

- Camp costs for groceries (other camp costs are included in approved reclamation plan).

Mobilization/Demobilization of Equipment & Materials

- Includes weights, number of Hercules flights, and aviation transport costs for all major items (shotcrete, rebar, bolts, backhoe, skid steer, etc.)

This tab converts all quantities and RSMeans lookups into actual dollar totals.

RSMeans Data Tab

This tab contains:

- Base RSMeans cost data used for all labor, equipment, and materials.
- Cost modifiers and outputs include Anchorage cost index adjustments, overhead, profit, and O&P totals.
- Detailed line-item breakdown for rock bolts, rebar installation, shotcrete application, trench excavation, grading, seeding, and utility removal.

It provides the source data from which the Cost Overview tab draws its calculations.

Quantities Tab

The Quantities Tab provides all physical quantities needed to estimate costs for the Amendment:

Pipeline Removal

- Trench lengths, trench widths, trench depths
- Calculated trench volumes in cubic yards
- Pipe dimensions, pipe weights, and total pipe weight
- Quantities of HDPE pipe (solid and slotted) used in RIB laterals and headers

RIB Removal

- Volumes and areas for lateral trenches and header trenches
- Calculations for drain rock, geotextile, and excavation quantities

Portal Plug

- Total cubic feet of shotcrete required
- Number of 50-lb bags, total weight, and number of Hercules payload trips

Equipment Fuel

- Daily fuel consumption for skid steer, backhoe, and quad
- Fuel landed cost \$10 USD/gallon

Appendix B Geochemical Reports

Piteau Associates. 2025. Johnson Tract Project, 2024 Hydrogeologic Characterization. Prepared for Contango Ore Inc.

pHase Geochemistry. 2024. Static Test Results in Support of a Proposed Exploration Drift, Johnson Tract Project - FINAL. Prepared for HighGold Mining Inc.

pHase Geochemistry. 2025a. Humidity Cell Results in Support of a Proposed Exploration Drift, Johnson Tract Project - FINAL. Prepared for HighGold Mining Inc.

pHase Geochemistry. 2025b. Geochemical Source Term Predictions for the Johnson Tract Development Drift. Prepared for J T Mining Inc.