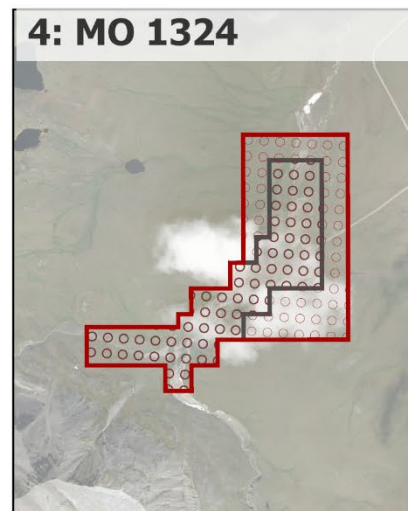
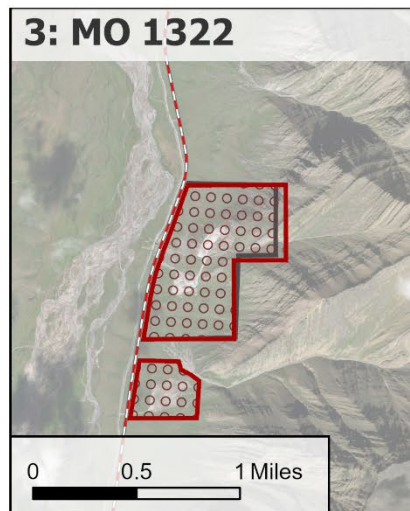
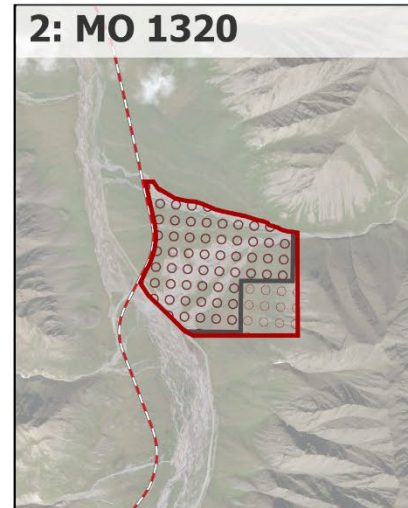
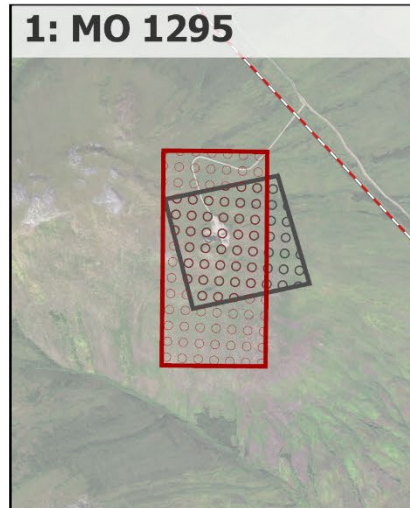
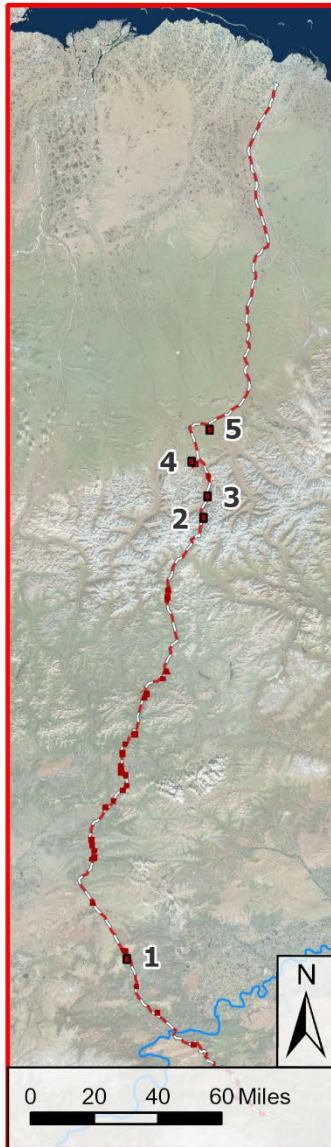
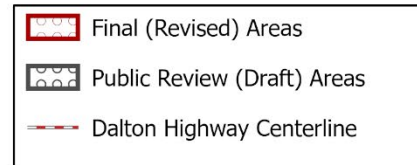


ISSUE RESPONSE SUMMARY
Mineral Orders 1292-1327

Subject	Issue Summary	Response	Recommended Revision	Comment #
Site boundaries	Site geometry in public review draft did not align with legal limits established in previous documentation.	We have modified or redrawn the boundaries of the requested material sites to align with the legal descriptions cited and to cover current and expected operational areas. See attached map for changes.	Revised the geometry of the site boundaries to match the current descriptions for Mineral Orders 1295, 1320, 1322, 1324,1326.	1-6

Mineral Orders 1295, 1320, 1322, 1324 & 1326: Public Review (Draft) and Final (Revised) Boundaries



Sources: Esri, Maxar, Earthstar Geographics, CNES/Airbus DS, and the GIS User Community
Spatial Reference: North American 1983 datum; Albers projection. Created Jan. 2026 by GL, RADS, DMLW, DNR, State of Alaska