

**STATE OF ALASKA
DEPARTMENT OF NATURAL RESOURCES
DIVISION OF MINING, LAND & WATER**

**COMMISSIONER'S ADMINISTRATIVE FINDING
MINERAL ORDER 1328
Closing Lands to Mineral Entry
AS 38.05.185(a)**

**JAMES DALTON HIGHWAY AND ASSOCIATED
MAINTENANCE AND TRANSPORTATION FACILITIES.**

The Commissioner of the Alaska Department of Natural Resources proposes to close state lands to mineral entry in a 300-ft wide corridor (150 ft on either side of center line) along the James Dalton Highway from the E. L. Patton Bridge to the Deadhorse Airport; the Coldfoot Maintenance Station and Airport; as well as other associated, nearby maintenance and transportation infrastructure facilities. The total amount of land affected by this order will be approximately 14,862 acres. See attached maps.

On December 30, 1971, a utility corridor was established by Public Land Order (PLO) 5150 to protect the route of the Trans-Alaska Pipeline. PLO 5150 withdrew lands to the federal government and caused them to be unavailable for conveyance to the state including much of the James Dalton Highway and associated transportation and maintenance facilities. Pursuant to President Trump's Executive Order 14153 "Unleashing Alaska's Extraordinary Resource Potential", the Bureau of Land Management (BLM) is expected to revoke PLO 5150 making lands available for state acquisition. Management of these lands is expected to be transferred to the state in January of 2026. In anticipation of the eventual conveyance of these lands to the state, this mineral order closes the James Dalton Highway and Coldfoot Maintenance Station and Airport to mineral entry and mining and will also be applied to associated transportation and maintenance facilities as they are conveyed to the state. These areas include the Chandalar Shelf Airport, Storage, and Maintenance Station; Galbraith Lake Airport; Prospect Creek Airport and Maintenance Station; and Seven Mile Maintenance Station.

The James Dalton Highway is the only major public road connecting the North Slope to Alaska's main road system. The primary purpose of the James Dalton Highway is to support oil and gas industry activities and functions as an important transportation link for residents of local communities. Access to lands along much of the highway is restricted by Title 19 of Alaska Statute (AS 19.40), whereby the James Dalton Highway Corridor was legislatively designated to encourage settlement and resource use, management, and development; provide year-round overland access to the north coast; and support national defense priorities. For these reasons, I find mining activity would be incompatible with the current and proposed land estate uses as a highway for industrial and commercial traffic and transportation, and as the primary connection between the North Slope and main road system of the state.

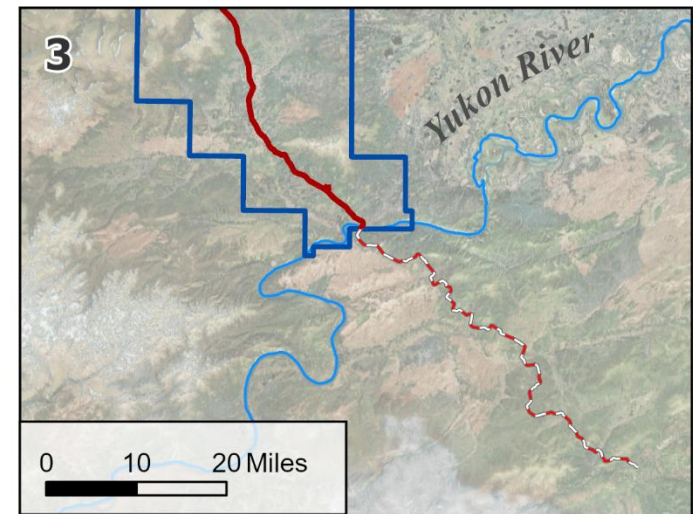
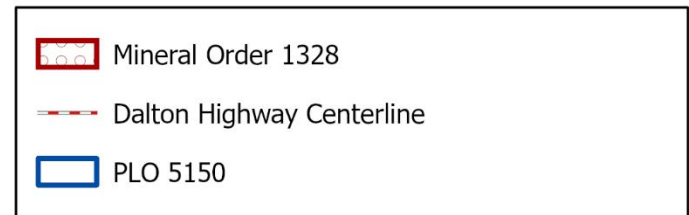
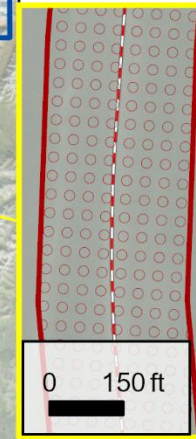
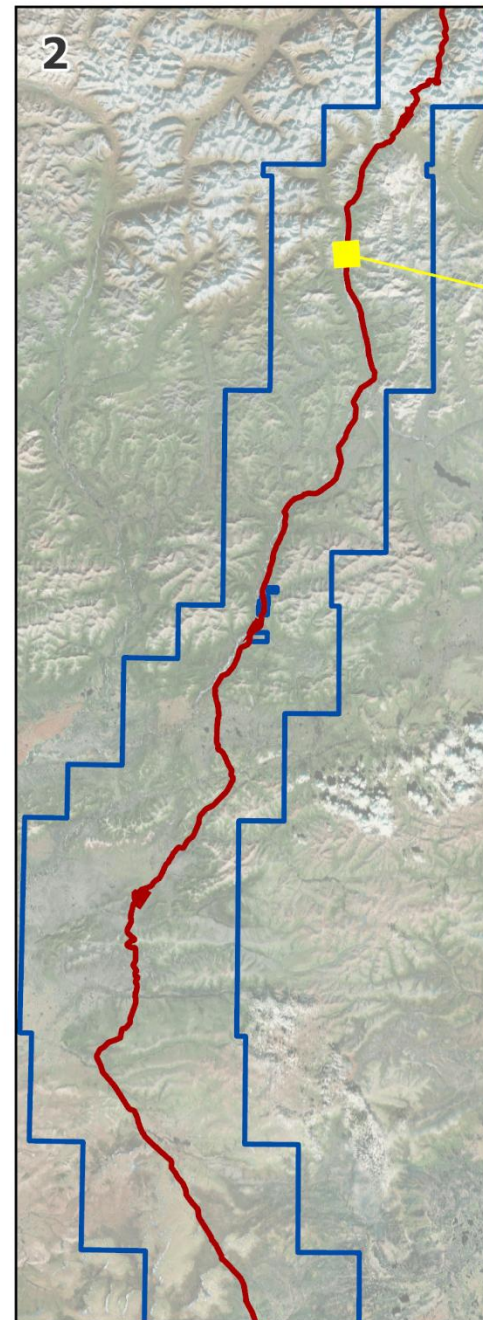
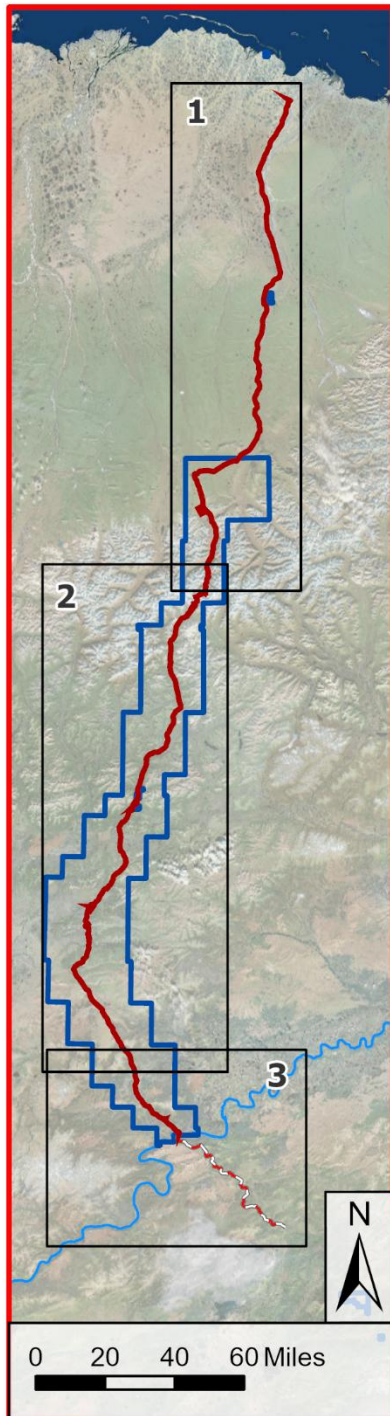
This action also authorizes changes to MO 1328 to accommodate future facilities added to the James Dalton Highway as well as closure of state-selected lands when they are conveyed to the state without a formal amendment to this order.

In accordance with AS 38.05.185(a) and AS 38.05.300, I find that the best interests of the State of Alaska and its residents are served by closure of the land to entry under the mineral location and mining laws of the State of Alaska as described by Mineral Order 1328. This order is subject to valid existing rights.

John Crowther, Commissioner Designee
Department of Natural Resources

Date

Mineral Order 1328 Closing, Map 1: James Dalton Highway



Sources: Esri, Maxar, Earthstar Geographics, CNES/Airbus DS, and the GIS User Community
Spatial Reference: North American 1983 datum; Albers projection. Created Nov. 2025 by GL, RADS, DMLW, DNR, State of Alaska

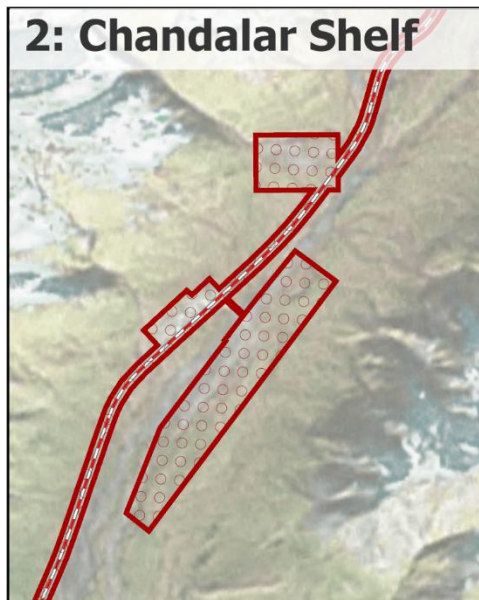
Mineral Order 1328 Closing, Map 2: Transportation facilities associated with the James Dalton Highway



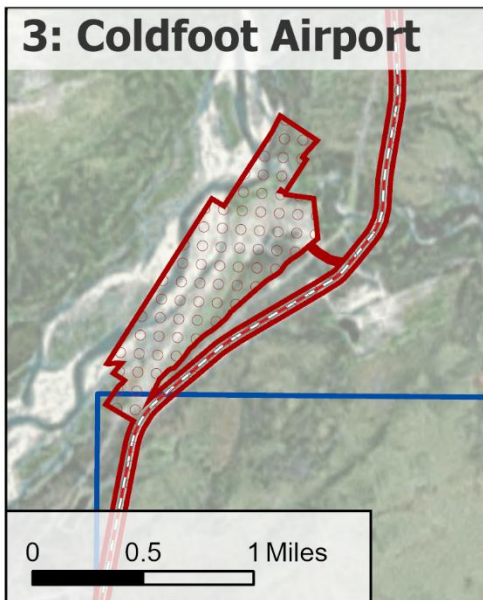
1: Galbraith Lake



2: Chandalar Shelf



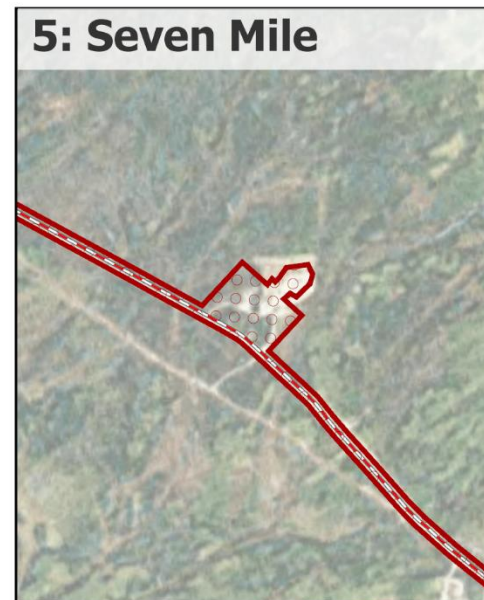
3: Coldfoot Airport






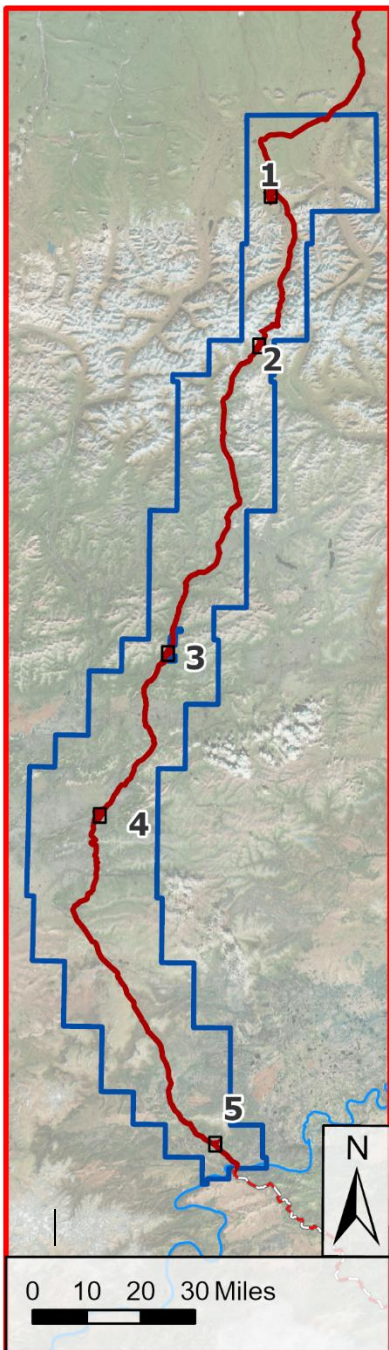
4: Prospect Creek



5: Seven Mile



-  Mineral Order 1328
-  Dalton Highway Centerline
-  PLO 5150



Sources: Esri, Maxar, Earthstar Geographics, CNES/Airbus DS, and the GIS User Community
 Spatial Reference: North American 1983 datum; Albers projection. Created Nov. 2025 by GL, RADS, DMLW, DNR, State of Alaska

Associated Dalton Highway Transportation and Maintenance Sites						
Name	Map 2 Inset	Meridian	Township	Range	Section	Acres
Galbraith Lake Airport	1	U	011S	011E	26, 14, 15, 23, 13, 22	655
Chandalar Shelf Airport	2	U	016S	011E	03, 10, 16, 09	202
Chandalar Shelf Maintenance Station	2	U	016S	011E	03, 04, 10, 09	26
Chandalar Shelf Storage	2	U	016S	011E	03	59
Coldfoot Airport	3	F	028N	012W	09, 21, 16, 15	299
Prospect Creek Airport	4	F	023N	014W	19, 20, 17	434
Prospect Creek Maintenance Station	4	F	023N	014W	18	50
Seven Mile Maintenance Station	5	F	013N	011W	21, 22	67