

Plan of Development

Quintillion Global

Overland Fiber – Utqiagvik to Santos NOP

November 24, 2025

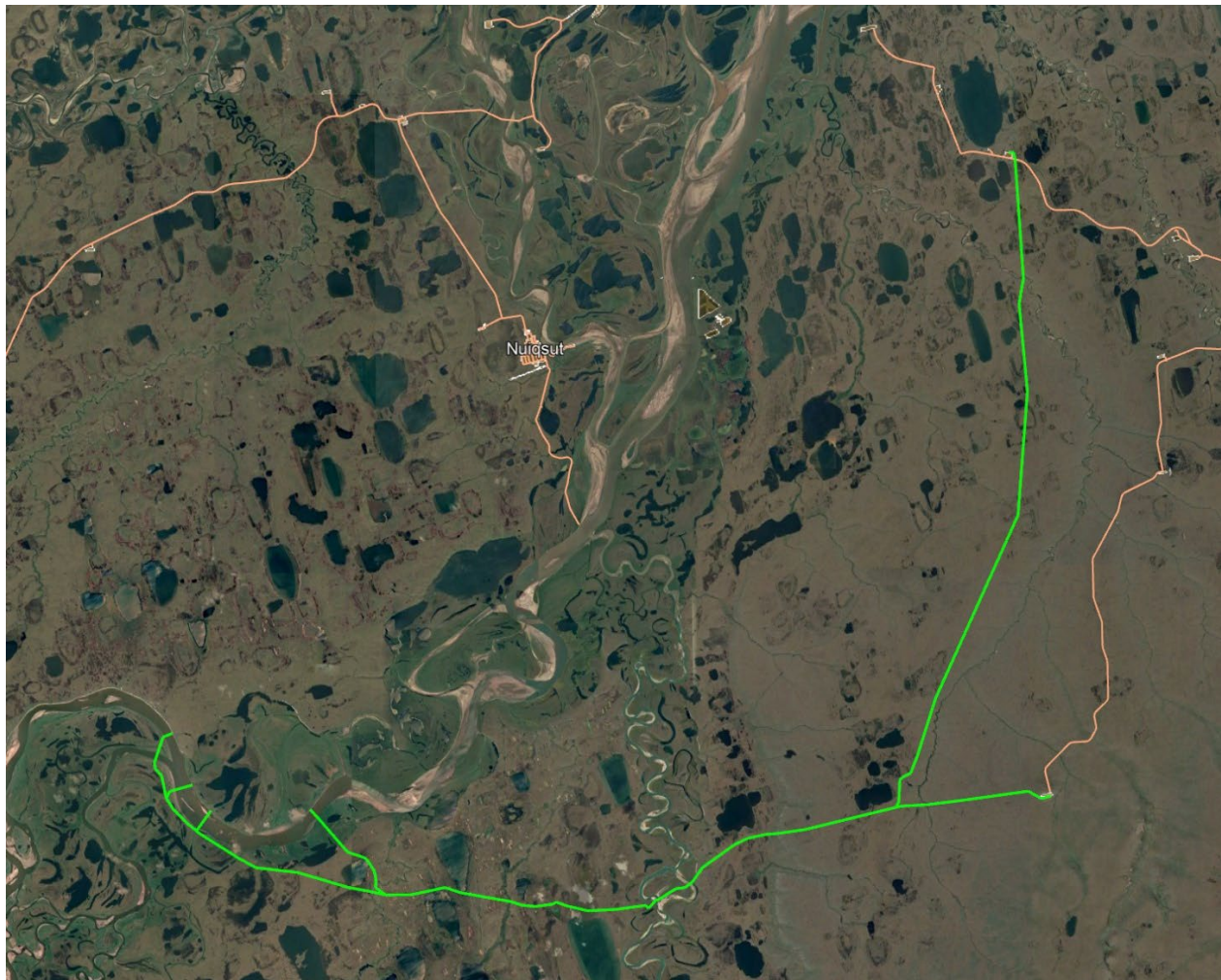
GENERAL DESCRIPTION

Quintillion proposes to construct a ground-laid fiber optic cable (FOC) project over approximately 241.5 miles of arctic tundra, from Utqiagvik to the Santos NOP pad, in North Slope, Alaska. The FOC will be installed primarily as a ground-laid cable in BLM lands (NPRA), the east approximately 40 miles are state lands. Portions will be aerial and/or hdd at major water crossings. Once the FOC is fully constructed, the FOC will be tested by Quintillion contractors and operated by Quintillion as a North Slope public utility. Quintillion is requesting from the Alaska Department of Natural Resources (ANDR) Division of Mining, Land, and Water (DMLW) a public utility easement (30-foot-wide operational right-of-way) of approximately 40-miles through state lands to operate the public utility.

FIGURE 1. The Proposed Complete Project from Utqiagvik to NOP – Orange Route



FIGURE 2. The Proposed Route Through State Lands from Colville River to NOP – Green Route



CONSTRUCTION

Construction of the ground laid FOC will occur in winter using the yearly CWAT ice road for equipment transport and project access where feasible. The project primarily lies within 0.5 miles of the CWAT. Additional stub ice roads may be necessary to access the project alignment and/or water crossings where poles and/or hdd are required. Initial access will be from either end at Utqiagvik & Santos NOP/Conoco 2P pad.

Winter construction will occur during the open North Slope winter travel window for state lands, as specified by the Alaska Department of Natural Resources (ADNR) Division of Mining, Land, and Water (DMLW) – Northern Region. Vehicles will meet specifications of ADNR and the North Slope Borough (NSB) for winter travel.

Construction of the FOC will require a minimum of 2 winter seasons. That portion which is on state lands will occur in a single winter season, with pre-construction staging of materials and equipment occurring at the end of the route near NOP.

Work crews installing the FOC will stay in established camps at nearby facilities and will follow all Unit regulations and Santos/Conoco policies pertaining to safety. Personnel will receive all required trainings for working on the North Slope. Crews will use all required safety gear for working at height and for working in North Slope winter conditions.

OPERATION

The Project will be operated year-round. Winter access to the FOC during operation will occur via approved winter travel vehicle during the open winter travel window that is determined each year by the ADNDR.

When summer access to the FOC is required to maintain the FOC during operation, foot traffic or ground vehicles with low-pressure smooth rubber tires may be used within the ROW to minimize impacts to tundra.

LAND USE

The FOC will be operated primarily on BLM land, however the last approximately 40-miles are State of Alaska land. Therefore, Quintillion has requested a 30-foot-wide public utility easement from the Alaska Department of Natural Resources for a period of 30 years to operate and maintain the approximately 40-mile long FOC. Quintillion will secure Letters of Non-Objection (LNOs) to construct, operate, and maintain the FOC within a ROW that will cross CPAI and Alpine oil and gas leases and overlap easements and Sales Oil Line ROW authorizations from ADNDR :

- ConocoPhillips Alaska, Inc.: ADL 422134 Pipeline ROW
- Conocophillips Company - Alpine Diesel And Oil Pipelines: ADL 415932/415701 Pipeline ROW

Quintillion may need access within and across these easements/ROWs to reach its public utility easement, or to stage vehicles / equipment in these areas when preparing to maintain or maintaining the FOC. Quintillion's impact to the land from constructing and operating the FOC utilizing Alpine and CPAI ROW will be negligible. Contractors constructing the lineal infrastructure will follow best practices and meet regulatory requirements to minimize impacts to wetlands, streams, cultural resources, and wildlife.

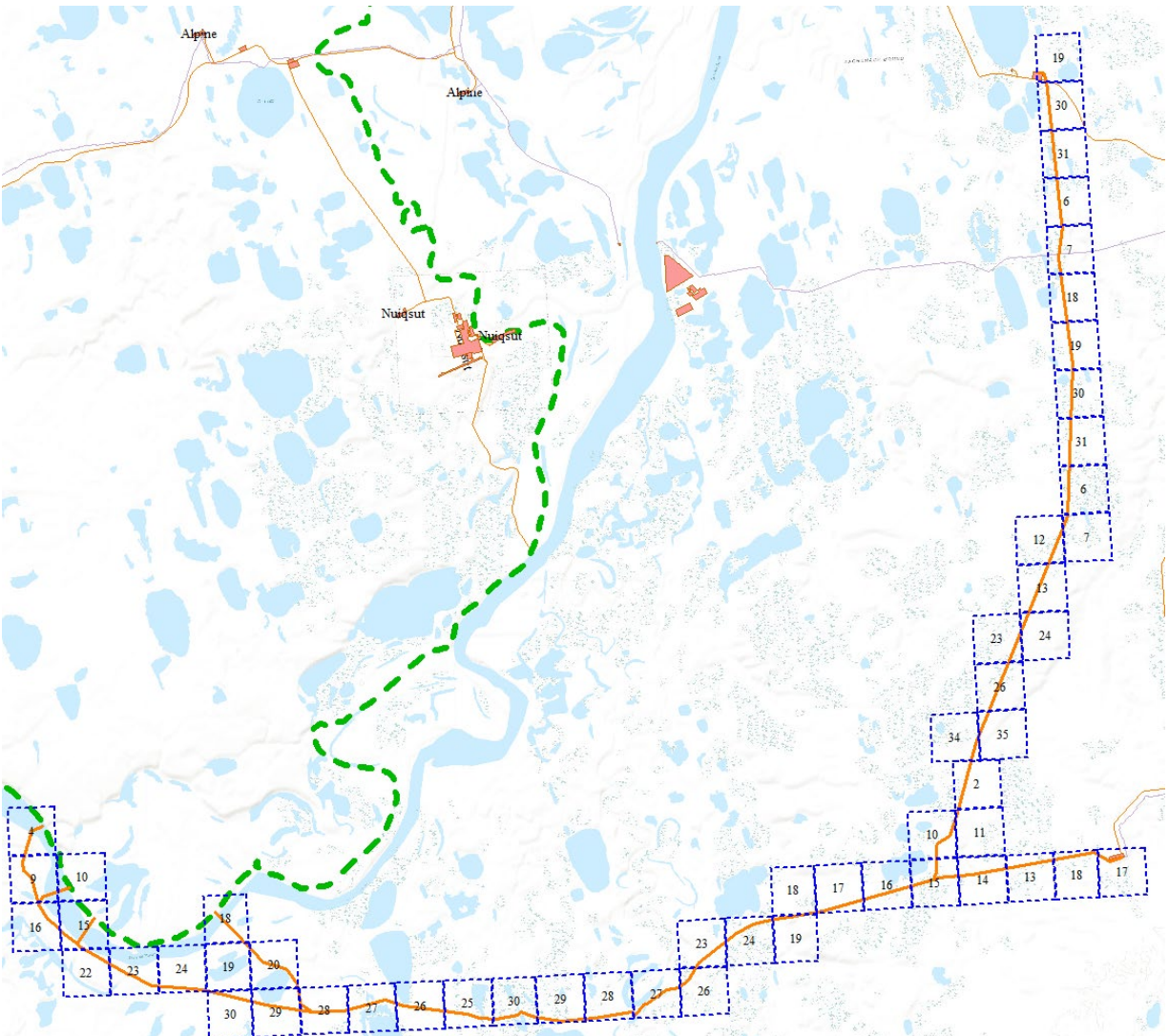
MTRS

The Meridian, Township, Range and Section (MTRS) for the project centerline is provided in Table 1.

TABLE 1. MTRS for the Proposed FOC Route from Santos STP to Quintillion CLS

Meridian, Township, Range & Section (MTRS)				
U010N006E25	U008N006E14	U008N005E26	U009N006E11	U008N003E09
U009N006E34	U008N006E16	U009N006E27	U008N003E23	U008N004E18
U010N006E12	U008N006E17	U008N004E25	U008N006E13	U008N004E19
U008N005E27	U008N006E10	U008N004E27	U008N004E20	U011N007E30
U008N003E25	U008N006E02	U008N004E28	U010N006E13	U011N007E19
U008N003E16	U009N006E14	U008N004E29	U008N007E17	U008N007E18
U008N004E26	U008N003E04	U009N006E01	U008N005E24	U008N006E18
U008N006E11	U011N006E36	U009N006E23	U008N005E28	U008N006E19
U008N006E15	U010N006E36	U011N006E25	U008N005E29	U008N004E30
U009N006E02	U008N003E26	U010N006E24	U009N006E22	U008N005E30
U008N003E22	U008N005E23	U010N006E01	U008N003E21	

FIGURE 3. Diagram of Township and Section for state lands from Colville River to Santos NOP



PERMITS OR AUTHORIZATIONS REQUIRED

Table 2 provides the known required permits and authorizations for the project. FOC construction and installation, including construction of ice roads/pad to provide access to project alignment, may be permitted and completed separately by a third party. Quintillion will obtain the public utility easement and NSB permit for FOC construction and operation/maintenance.

TABLE 2. LIST OF REQUIRED STATE AND FEDERAL AUTHORIZATIONS

Authorizing Party	Authorization
Santos/CPAI/Alpine	LNO to use ROWs to access and operate the FOC
NSB Planning Department	LMR, TLUI
ADNR DMLW	Public Utility Easement, TWUA
Alaska Bureau of Land Management	Public Utility Easement, Construction Permit
US Army Corps of Engineers	Wetland construction permit

ADNR = Alaska Department of Natural Resources; DMLW = Department of Mining, Land & Water; FOC = fiber Optic cable; NSB = North Slope Borough; LOA = Letter of Authorization; LNO = Letter of non-objection; ROW = Right-of-Way; TLUI = Traditional Land Use Inventory; TWUA = Temporary Water Use Authorization

INSTALLATION

The FOC spools will be mounted on approved winter offroad construction equipment to pay out the fiber onto the ground surface along the project alignment where appropriate. Temporary ice pads may be necessary to install wooden poles with anchors, and/or HDD installations at major water bodies. Wastewater and/or soil will be disposed of by contractor according to state and federal regulation.

EQUIPMENT AND STAFFING

Staffing and Equipment needs for the proposed project are shown below in Table 3.

TABLE 3. STAFFING FOR TYPICAL INSTALLATION

Role	Estimated # Staff	Materials & Equipment
Manager/Logistics Coordinator	1	N/A
Base Support – materials & equipment loaders, inventory support staff	1	Forklifts, loaders, other heavy equipment, inventory lists;
Field Crew to install FOC	3	Safety hardware for open trench. Safety harnesses and gear for working at height.
Vehicle drivers	3	FOC & Conduit spools, excavator, compactor, powered winches or unspooling apparatus, lifts / booms.
Total personnel required	8	
** More personnel and equipment may be used to meet schedule, for safety, or to address unforeseen challenges.		

ENVIRONMENTAL IMPACTS AND MITIGATION MEASURES

Quintillion will implement Standard Operating Procedures (SOP) for Construction and Operational phases of the Project. Impacts of the Project are expected to be short-term and will occur during the construction period due to ground transportation and field work. Project design and implementation of site-specific mitigation measures will minimize the effects of the Project. The FOC will have negligible long-term impacts on air quality, water quality, or noise levels. Negligible wetland or stream impacts are expected from this project. Visual impacts will be minimal. There are no population-level effects to biological resources expected for this project. There will be no noticeable impact on the rural lifestyles of the local social or economic fabric.

Contractors who are familiar with North Slope oilfields will be employed, providing personnel who are familiar with industry requirements regarding environmental and regulatory compliance standards. Personnel will be trained on operational plans, including waste management, snow removal, spill prevention, cultural awareness, and wildlife interaction, which will minimize the potential for impacts during daily operations.

DECONSTRUCTION AND DEMOBILIZATION

The project is proposed under a 30-year lease, which may be extended at that time. Ground laid fiber optic cable, wood poles and junction / splice boxes will be removed by Quintillion in coordination with abandonment.