



Start of Trail: Section 18, Township 017N, Range 007W, Seward Meridian;
End of Trail: Section 29, Township 021N, Range 011W, Seward Meridian.

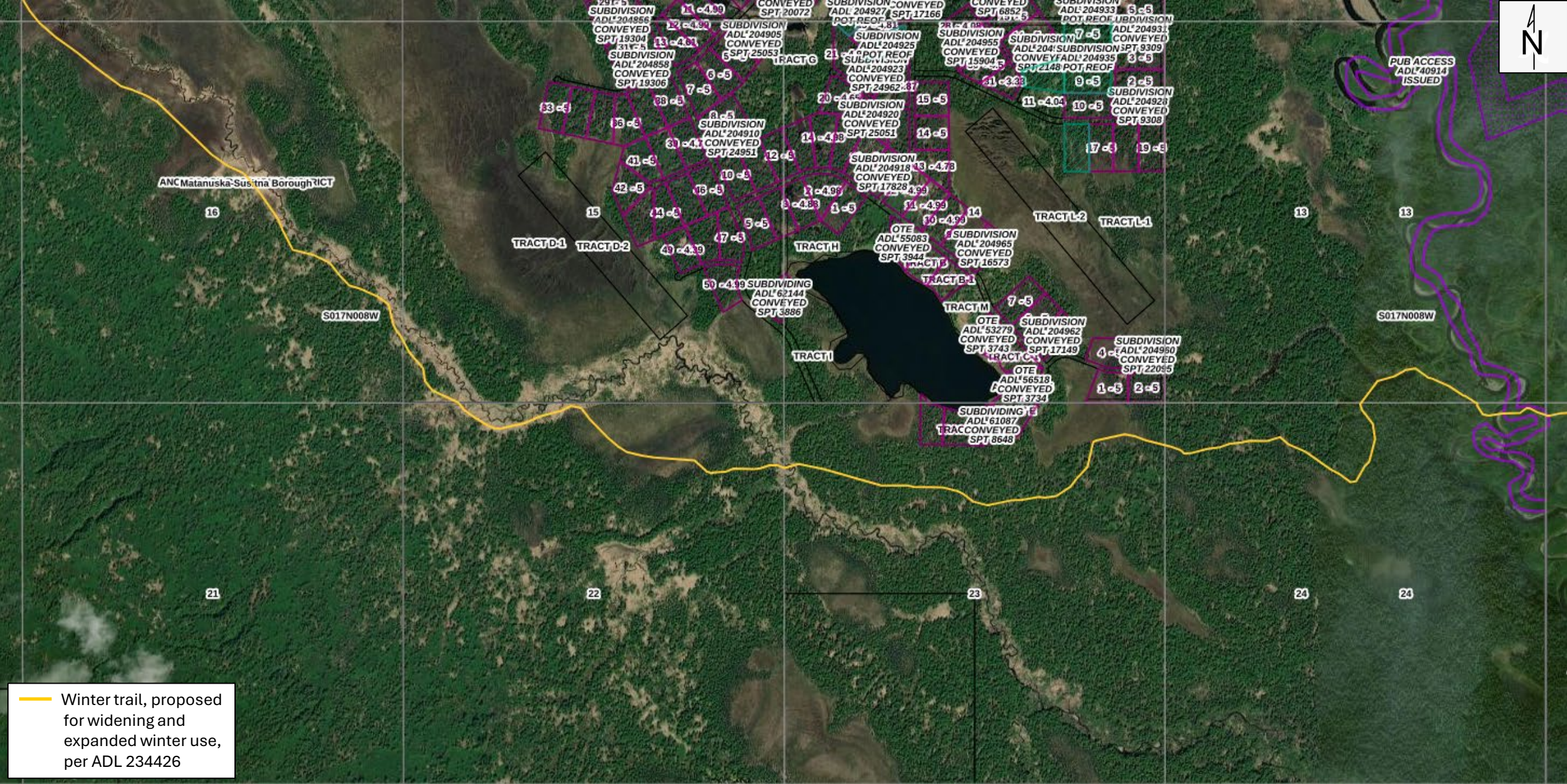
Winter Trail Improvement Project



— Winter trail, proposed for widening and expanded winter use, per ADL 234426

Affected Sections:
Section 18, Township 017N, Range 007W, Seward Meridian; Section 19, Township 017N, Range 007W, Seward Meridian.

Winter Trail Improvement Project



— Winter trail, proposed for widening and expanded winter use, per ADL 234426

Affected Sections:
 Section 24, Township 017N, Range 008W, Seward Meridian; Section 13, Township 017N, Range 008W, Seward Meridian;
 Section 23, Township 017N, Range 008W, Seward Meridian; Section 22, Township 017N, Range 008W, Seward Meridian;
 Section 15, Township 017N, Range 008W, Seward Meridian; Section 16, Township 017N, Range 008W, Seward Meridian.

Winter Trail Improvement Project



Affected Sections:

Section 09, Township 017N, Range 008W, Seward Meridian; Section 08, Township 017N, Range 008W, Seward Meridian;
Section 07, Township 017N, Range 008W, Seward Meridian; Section 06, Township 017N, Range 008W, Seward Meridian;
Section 01, Township 017N, Range 009W, Seward Meridian.

Winter Trail Improvement Project



Date:
06-04-25



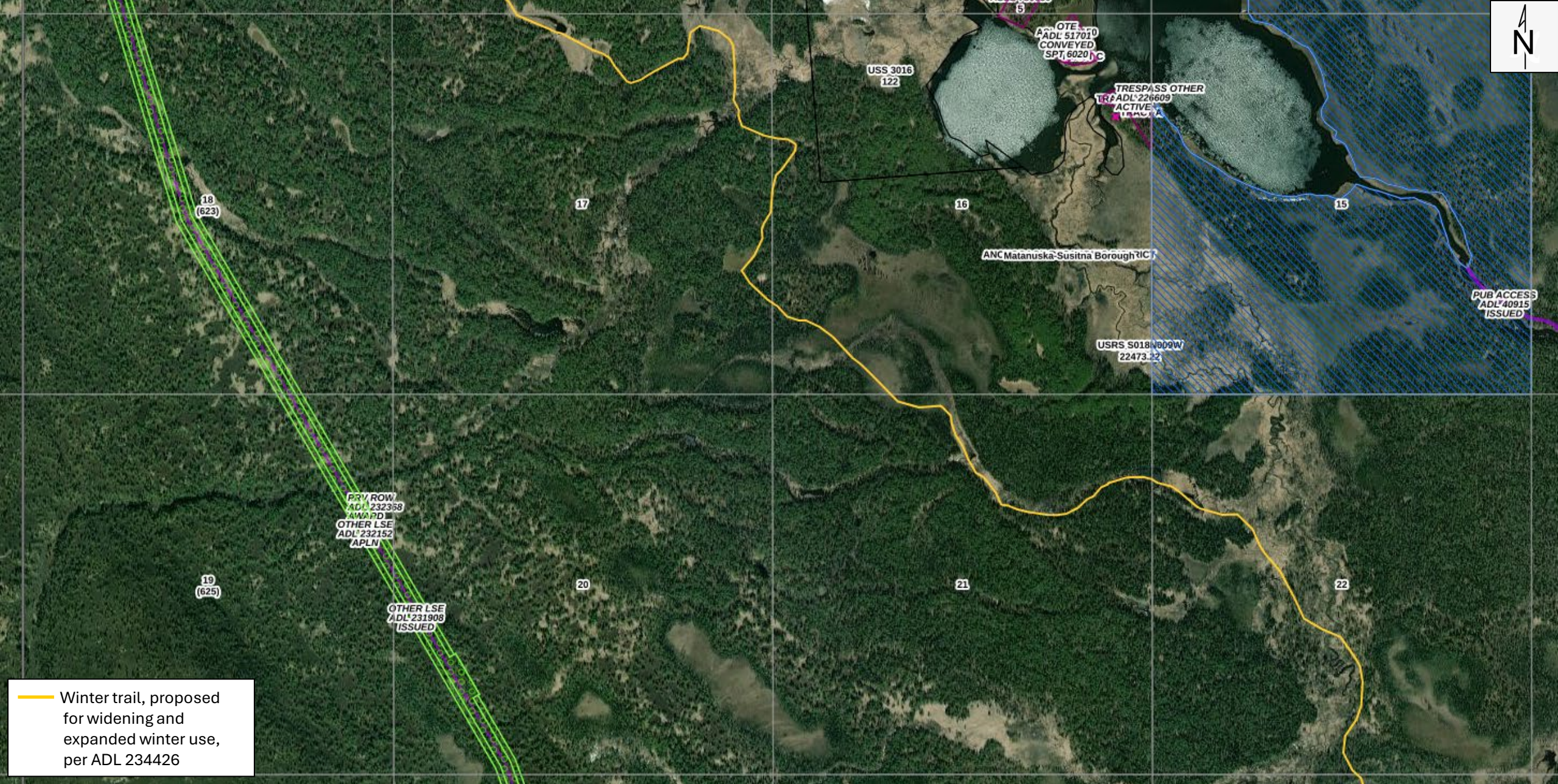
— Winter trail, proposed for widening and expanded winter use, per ADL 234426

Affected Sections:
Section 36, Township 018N, Range 009W, Seward Meridian; Section 35, Township 018N, Range 009W, Seward Meridian;
Section 26, Township 018N, Range 009W, Seward Meridian; Section 27, Township 018N, Range 009W, Seward Meridian.

Winter Trail Improvement Project



Date: 06-04-25



Affected Sections:
 Section 22, Township 018N, Range 009W, Seward Meridian; Section 21, Township 018N, Range 009W, Seward Meridian;
 Section 16, Township 018N, Range 009W, Seward Meridian; Section 17, Township 018N, Range 009W, Seward Meridian.

Winter Trail Improvement Project



— Winter trail, proposed for widening and expanded winter use, per ADL 234426

Affected Sections:
Section 08, Township 018N, Range 009W, Seward Meridian; Section 07, Township 018N, Range 009W, Seward Meridian;
Section 06, Township 018N, Range 009W, Seward Meridian; Section 01, Township 018N, Range 010W, Seward Meridian.

Winter Trail Improvement Project



Affected Sections:
Section 36, Township 019N, Range 010W, Seward Meridian; Section 35, Township 019N, Range 010W, Seward Meridian;
Section 26, Township 019N, Range 010W, Seward Meridian; Section 27, Township 019N, Range 010W, Seward Meridian.

Winter Trail Improvement Project



Affected Sections:
 Section 22, Township 019N, Range 010W, Seward Meridian; Section 15, Township 019N, Range 010W, Seward Meridian;
 Section 16, Township 019N, Range 010W, Seward Meridian.

Winter Trail Improvement Project

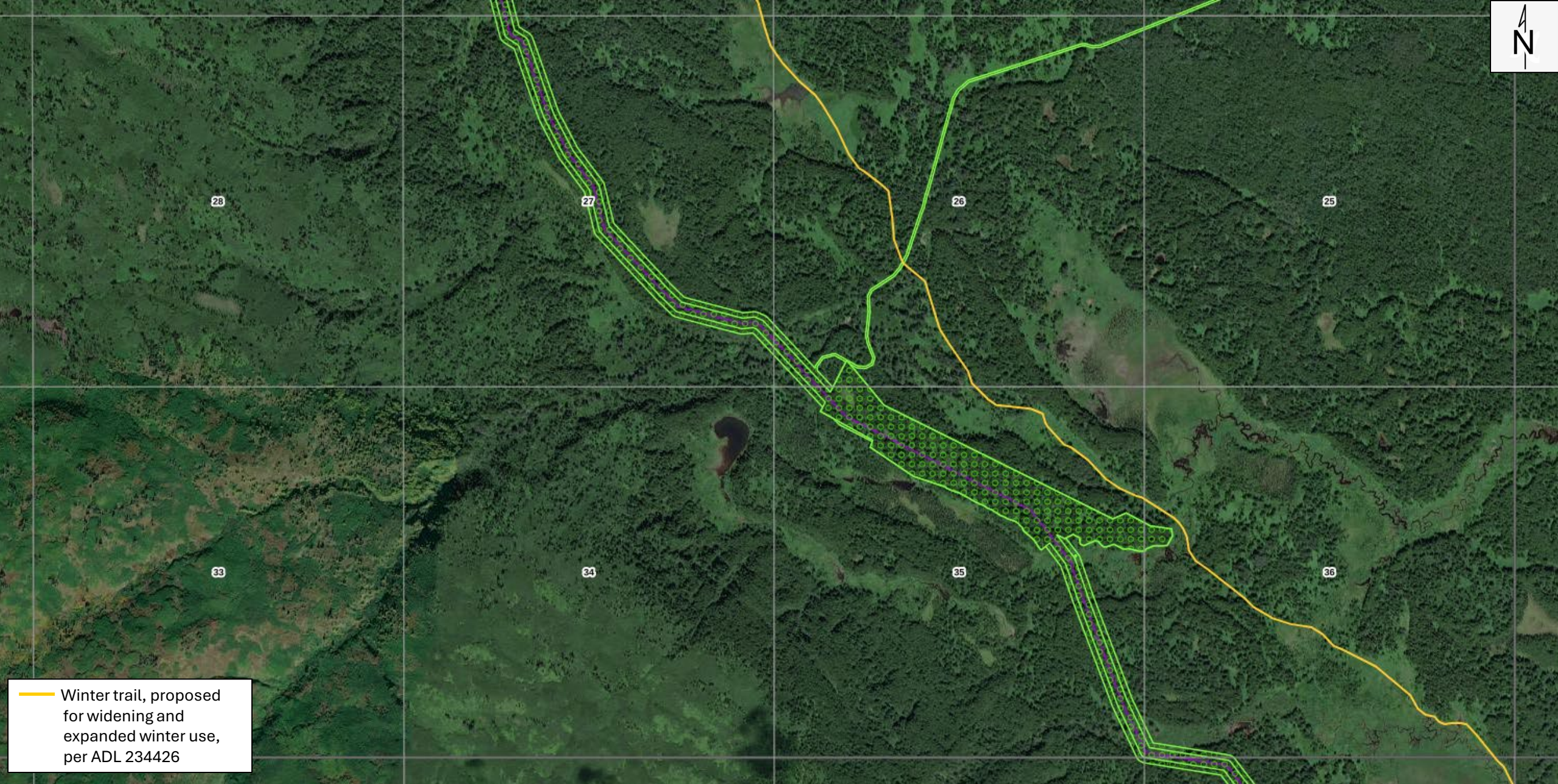


OTHER LSE
ADL 231908
ISSUED ROW
1/1/2013 ADL 232368
AWARD

Winter trail, proposed
for widening and
expanded winter use,
per ADL 234426

Affected Sections:
Section 09, Township 019N, Range 010W, Seward Meridian; Section 08, Township 019N, Range 010W, Seward Meridian;
Section 07, Township 019N, Range 010W, Seward Meridian; Section 06, Township 019N, Range 010W, Seward Meridian;
Section 01, Township 019N, Range 011W, Seward Meridian.

Winter Trail Improvement Project



— Winter trail, proposed for widening and expanded winter use, per ADL 234426

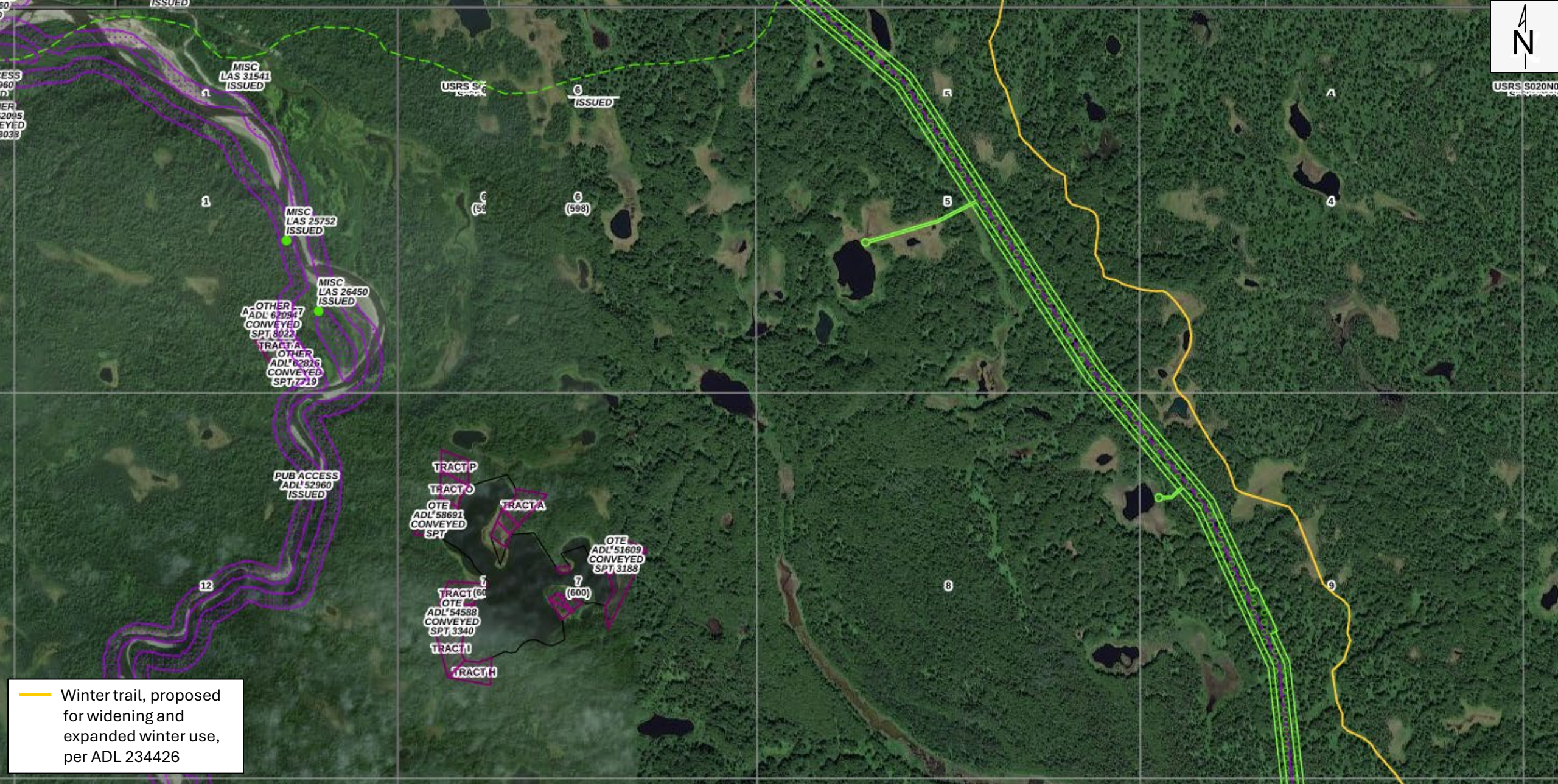
Affected Sections:
Section 36, Township 020N, Range 011W, Seward Meridian; Section 35, Township 020N, Range 011W, Seward Meridian; Section 26, Township 020N, Range 011W, Seward Meridian; Section 27, Township 020N, Range 011W, Seward Meridian.

Winter Trail Improvement Project



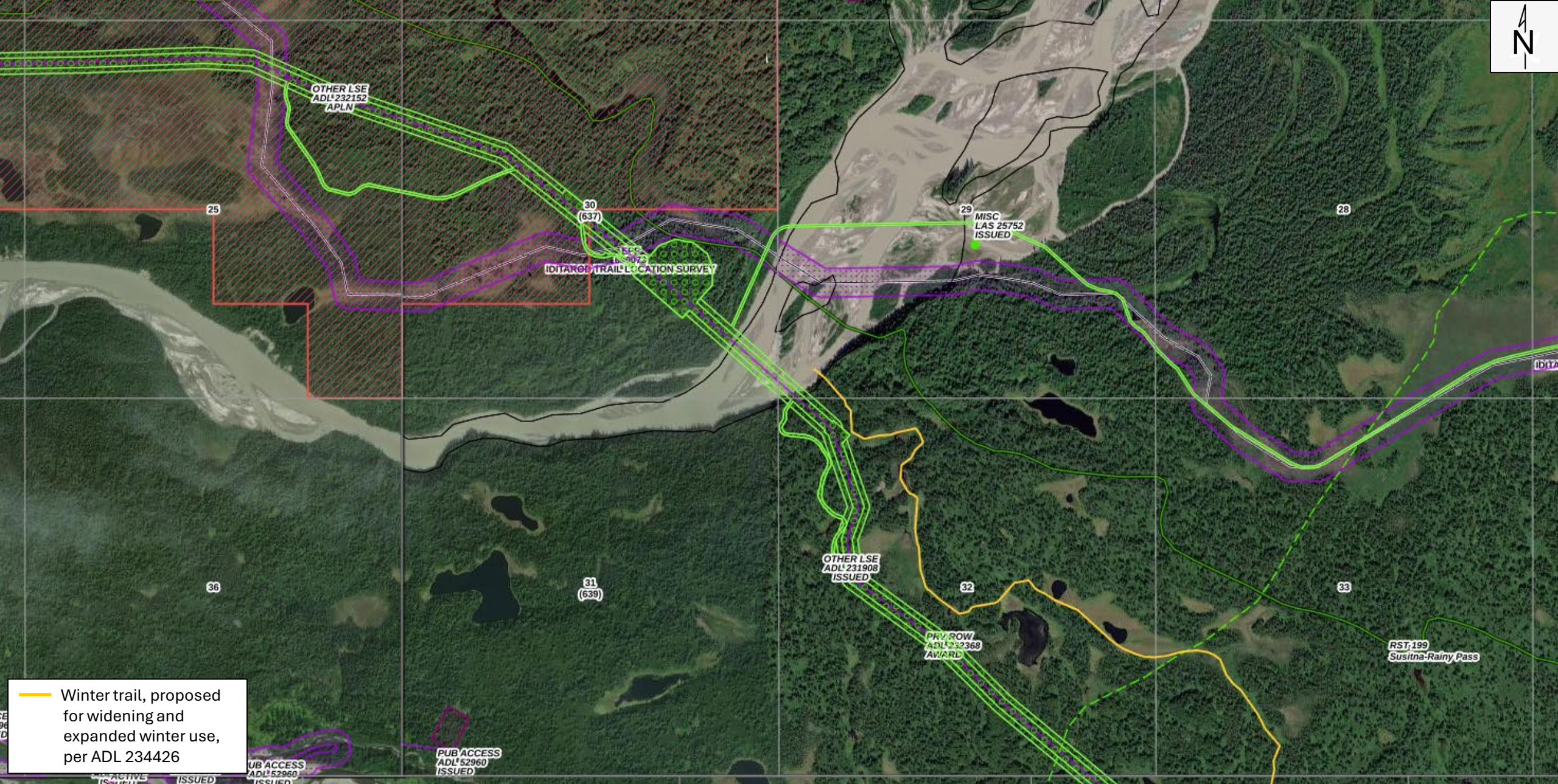
Affected Sections:
Section 22, Township 020N, Range 011W, Seward Meridian; Section 15, Township 020N, Range 011W, Seward Meridian;
Section 16, Township 020N, Range 011.

Winter Trail Improvement Project



Affected Sections:
 Section 09, Township 020N, Range 011W, Seward Meridian; Section 04, Township 020N, Range 011W, Seward Meridian;
 Section 05, Township 020N, Range 011W, Seward Meridian.

Winter Trail Improvement Project



— Winter trail, proposed for widening and expanded winter use, per ADL 234426

Affected Sections:
Section 33, Township 021N, Range 011W, Seward Meridian;
Section 32, Township 021N, Range 011W, Seward Meridian;
Section 29, Township 021N, Range 011W, Seward Meridian.

Winter Trail Improvement Project