

**OWNERSHIP LEGEND**

PROPOSED BURIED FIBER OPTIC CABLE:

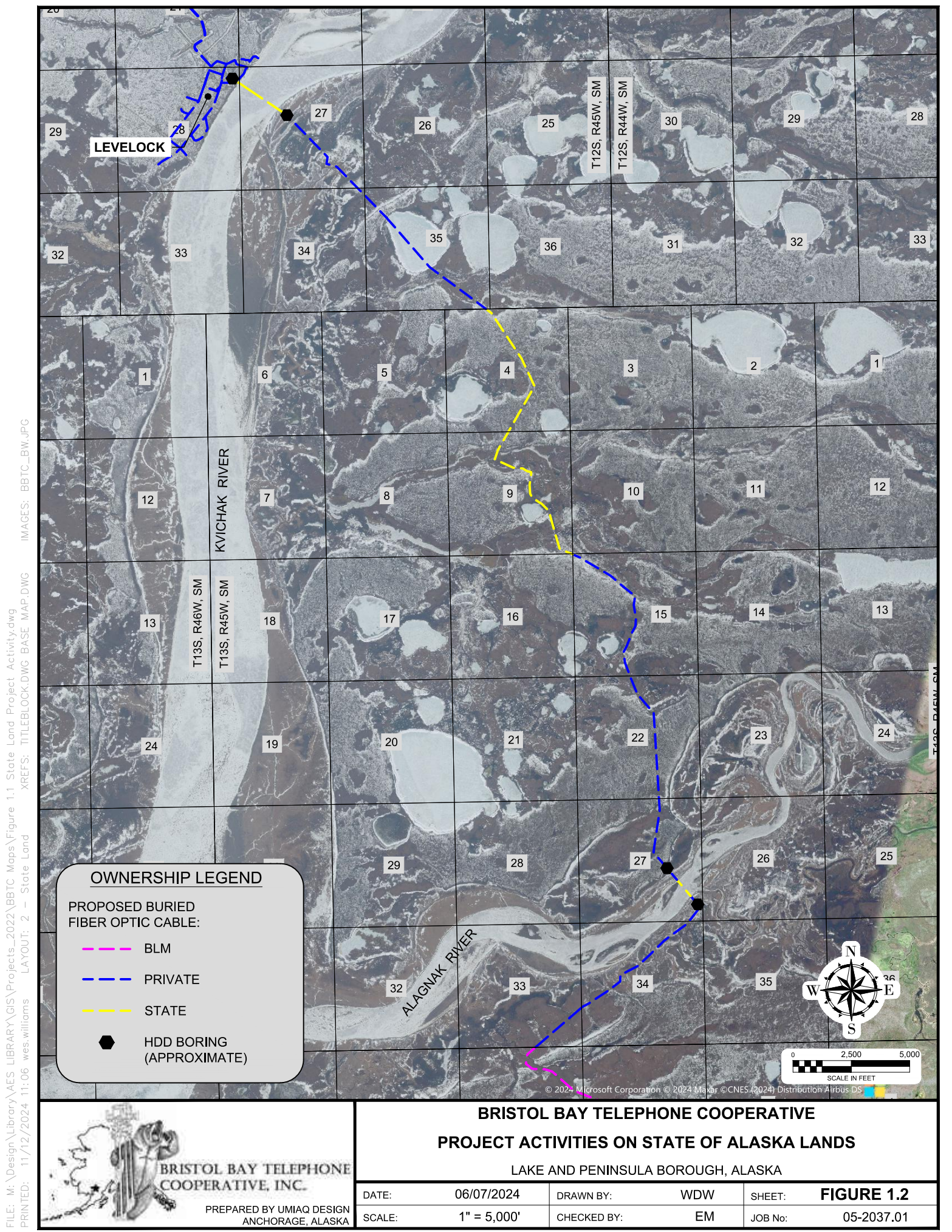
- BLM
- PRIVATE
- STATE



**BRISTOL BAY TELEPHONE COOPERATIVE, INC.**

PREPARED BY UMIQA DESIGN  
ANCHORAGE, ALASKA

BRISTOL BAY TELEPHONE COOPERATIVE			
PROJECT ACTIVITIES ON STATE OF ALASKA LANDS			
LAKE AND PENINSULA BOROUGH, ALASKA			
DATE:	06/07/2024	DRAWN BY:	WDW
SCALE:	1" = 2,500'	CHECKED BY:	EM
SHEET:	FIGURE 1.1		
JOB No:	05-2037.01		



FILE: M:\Design\Library\AES LIBRARY\GIS\Projects\_2022\BBTC Maps\Figure 1.1 State Land Project Activity.dwg  
PRINTED: 11/12/2024 11:06 wes.williams LAYOUT: 2 - State Land XREFS: TITLEBLOCK.DWG BASE MAP.DWG IMAGES: BBTC\_BW.JPG

**OWNERSHIP LEGEND**

PROPOSED BURIED  
FIBER OPTIC CABLE:

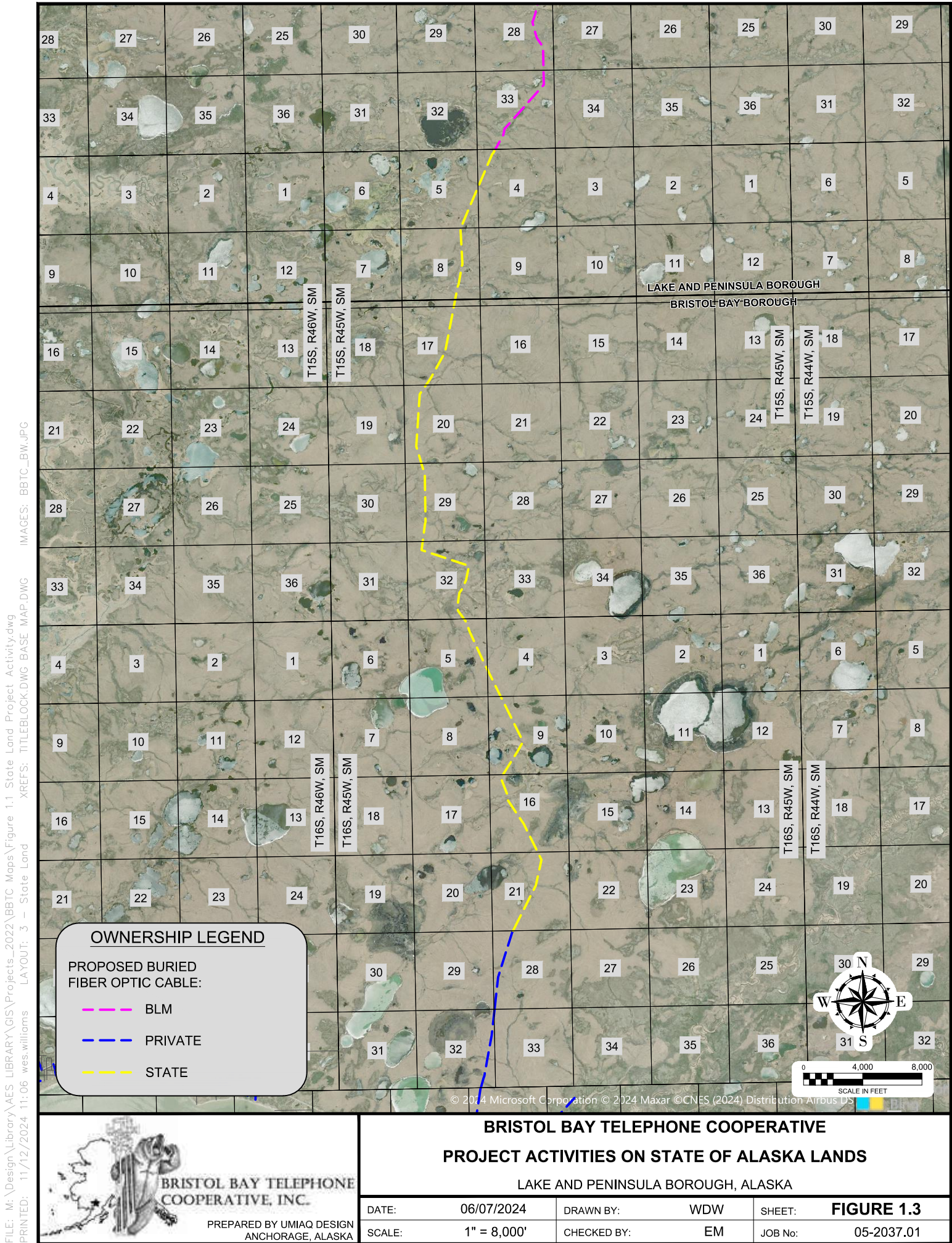
- BLM
- PRIVATE
- STATE
- HDD BORING  
(APPROXIMATE)

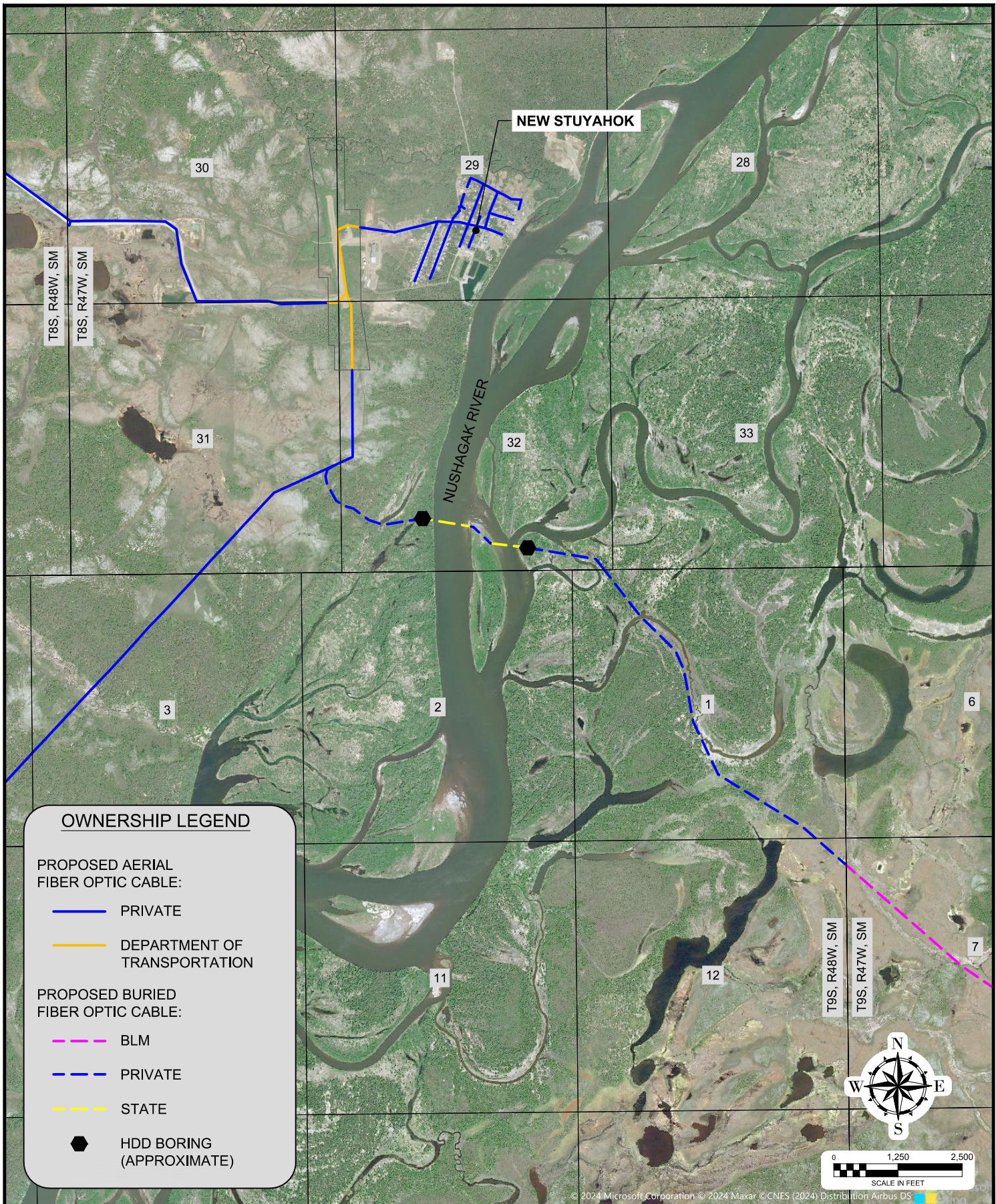


**BRISTOL BAY TELEPHONE  
COOPERATIVE, INC.**

PREPARED BY UMAIQ DESIGN  
ANCHORAGE, ALASKA

BRISTOL BAY TELEPHONE COOPERATIVE			
PROJECT ACTIVITIES ON STATE OF ALASKA LANDS			
LAKE AND PENINSULA BOROUGH, ALASKA			
DATE:	06/07/2024	DRAWN BY:	WDW
SCALE:	1" = 5,000'	CHECKED BY:	EM
SHEET:	FIGURE 1.2		
JOB No:	05-2037.01		






**OWNERSHIP LEGEND**

**PROPOSED AERIAL  
FIBER OPTIC CABLE:**

- PRIVATE
- DEPARTMENT OF  
TRANSPORTATION

**PROPOSED BURIED  
FIBER OPTIC CABLE:**

- BLM
- PRIVATE
- STATE

 HDD BORING  
(APPROXIMATE)



**BRISTOL BAY TELEPHONE  
COOPERATIVE, INC.**

PREPARED BY UMIQA DESIGN  
ANCHORAGE, ALASKA

**BRISTOL BAY TELEPHONE COOPERATIVE  
PROJECT ACTIVITIES ON STATE OF ALASKA LANDS**

DILLINGHAM CENSUS AREA, ALASKA

DATE:	06/07/2024	DRAWN BY:	WDW	SHEET:	<b>FIGURE 1.4</b>
SCALE:	1" = 2,500'	CHECKED BY:	EM	JOB No:	05-2037.01