

# STATE OF ALASKA

Department of Natural Resources  
Support Services Division



## REQUEST FOR INFORMATION (RFI)

### CARBON OFFSET PROJECT SERVICES: REFORESTATION, BIOCHAR, AND BIOMASS BURIAL

Issued September 16, 2025

#### INTRODUCTION

The Alaska Department of Natural Resources (DNR), Office of Project Management & Permitting, invites expressions of interest from qualified parties to explore and advance carbon offset projects on state forestlands, including:

- Reforestation and afforestation initiatives,
- Biochar production for long-term carbon storage,
- Terrestrial sequestration through woody biomass burial, or
- Other innovative, forest-based carbon removal approaches.

We welcome proposals, concepts, and recommendations from vendors interested in collaborating with DNR to evaluate feasibility and implement projects that deliver measurable climate benefits while supporting sustainable forest management on Alaska's state lands.

#### BACKGROUND

Widespread spruce beetle outbreaks and large wildfires have resulted in extensive areas of standing dead and downed timber in forests managed by the State of Alaska (see Map A on page 6).

Since 2016, spruce beetle outbreaks have affected more than two million acres of forests across Southcentral Alaska, including the Kenai Peninsula, Matanuska-Susitna Valley, and the Denali and Copper River areas. During the same period, wildfires in Interior and Southcentral Alaska have burned over 3.5 million acres of state land (see Alaska Wildland Fire History at <https://arcg.is/0K19m40>).

Together, these disturbances have impacted forest health, increased wildfire risk, reduced the availability of merchantable timber, and diminished the visual quality and ecological integrity of affected landscapes.

However, these degraded forestlands also present an opportunity. Recently passed state legislation opens over 100 million acres of state-owned land, including more than 50 million acres of forestland, to the development of carbon management projects through two innovative programs:

1. The **Carbon Offset Program** ([www.dnr.alaska.gov/carbon](http://www.dnr.alaska.gov/carbon)) allows DNR to contract with carbon project developers to develop projects on state land on a fee-for-service or commission-fee basis.
2. The **Carbon Management Leasing Program** allows interested parties to lease state land to independently develop carbon projects (excluding Improved Forest Management projects) while compensating the state for the use of the land. Email [nro.lands@alaska.gov](mailto:nro.lands@alaska.gov) for information about the Carbon Management Leasing Program.

Through these two programs, damaged forestlands can support carbon-reducing projects that deliver climate benefits while generating revenue and creating jobs.

### SCOPE OF INTEREST

DNR seeks responses from vendors qualified to provide services, including, but not limited to:

- Evaluating the technical and economic feasibility of carbon offset projects using afforestation/reforestation, biochar, or woody biomass.
- Identifying suitable project sites on beetle-killed, fire-damaged, and other degraded forestlands.
- Recommending best practices for afforestation/reforestation, biochar production, and/or biomass utilization/storage carbon offset projects.
- Determining project eligibility under established carbon offset standards and protocols (e.g., Verra, ACR, Climate Action Reserve, Gold Standard, Isometric, Puro.earth).
- Estimating potential carbon offset yields and highlighting potential co-benefits to communities and the State.
- Supporting all phases of project development, including feasibility, stakeholder engagement, registration, financing strategies, and credit marketing and sales.

### VENDOR QUALIFICATIONS

Vendors should demonstrate:

- Proven experience in afforestation/reforestation, biochar systems, and/or forest biomass storage (i.e. terrestrial storage of biomass) or utilization.
- Familiarity with carbon offset markets and third-party certification standards and methodologies.
- Knowledge of Alaska’s environmental conditions and resource management opportunities and challenges, or experience in comparable regions.
- Relevant multidisciplinary expertise in forestry, environmental engineering, ecological restoration, carbon accounting, and/or project finance.

## RESPONSE CRITERIA

Qualified vendors should submit a written expression of interest that includes:

1. A brief letter outlining relevant experience and capabilities;
2. Examples of similar successfully completed projects, preferably in a forested landscape;
3. Qualifications of the proposed project team; and
4. Preliminary ideas for carbon offset project concepts related to afforestation/reforestation, biochar, or forest biomass storage tailored to Alaska.

## NOTES ON AVAILABILITY OF AREAS/FEEDSTOCK

A few notes on the availability, quality, and accessibility of degraded areas:

- Preliminary estimates indicate that approximately 2.6 million dry tons of accessible standing dead woody biomass are located within ¼ mile of the road system, and about 6.3 million dry tons within 1 mile, across the Matanuska-Susitna Valley, Kenai Peninsula, and Anchorage areas. (Note: These figures encompass all types of land ownership; although other non-state landowners may offer biomass for project feedstock, DNR can only authorize the use of biomass located on state-owned lands or the leasing of state-owned lands for a carbon project.)
- Slash and woody debris from planned hazardous fuel mitigation projects could be an additional source of biochar feedstock or woody biomass. Additional information on these projects can be found at [forestry.alaska.gov/fire/fuelmitigation](https://forestry.alaska.gov/fire/fuelmitigation).
- Most burned areas consist of low-productivity black spruce stands characterized by poor soils and underlying permafrost—conditions generally unsuitable for replanting. However, a small number of burned sites are known to support more favorable growing conditions and have the potential to produce merchantable timber.
- Nearly 86,000 acres of recent beetle-kill stands in well-drained, road-accessible areas have been identified in Southcentral (see Map B on page 7).
- Spruce-beetle-caused tree mortality is significant but patchy and generally non-contiguous across state-owned lands. The interspersed spruce mortality with other unharmed tree species could complicate site preparation (i.e. scarification) for replanting projects. While areas of beetle-kill may be of sufficient volume for a biochar or biomass burial project, access to and contiguity of those stands may be unsuitable.

## GIS DATA AND OTHER RESOURCES

The Alaska Division of Forestry & Fire Protection (DOF) provides publicly available GIS data to help interested parties evaluate state lands for potential carbon offset projects. Resources and datasets include:

- Alaska Statewide Forest Inventory: <https://arcg.is/CL0Li>
- Regional Forest Inventory Datasets: [forestrymaps-soa-dnr.hub.arcgis.com/search?q=Inventory](https://forestrymaps-soa-dnr.hub.arcgis.com/search?q=Inventory)

STATE OF ALASKA – REQUEST FOR INFORMATION (RFI):

CARBON OFFSET PROJECT SERVICES: REFORESTATION, BIOCHAR, AND BIOMASS BURIAL

---

- Alaska Department of Natural Resources' Forestry Resources Viewer: <https://arcg.is/1quCe51>
- Alaska Forest Health Aerial Survey: <https://data-soa-dnr.opendata.arcgis.com/maps/9bd0adfecdd346f29260eaca00be3e71/about> (2025 survey data available spring 2026)
- Alaska Wildland Fire History: <https://arcg.is/1iSHzu1>
- Alaska Public Fuel Treatments: <https://forestrymaps-soa-dnr.hub.arcgis.com/apps/SOA-DNR::soa-public-fuel-treatment-app/about?path=>

Other helpful resources relating to carbon offset projects, reforestation, biochar feedstock, and biomass burial include:

- Alaska Department of Natural Resources' Carbon Offset Program: [www.dnr.alaska.gov/carbon](http://www.dnr.alaska.gov/carbon)
- Alaska Division of Forestry & Fire Protection's Forest Health Program: [www.forestry.alaska.gov/insects](http://www.forestry.alaska.gov/insects)
- Natural Resources Conservation Service's Web Soil Survey: <https://websoilsurvey.sc.egov.usda.gov/app>

DNR appreciates your interest in partnering to explore innovative carbon offset strategies that generate revenue while enhancing forest resilience and health.

### IMPORTANT NOTICE

This Request for Information does not constitute nor guarantee that the State will proceed with issuing a solicitation for the requested services. The State is not responsible for any costs associated with the preparation of any response to this request. However, if this request draws sufficient interest from vendors capable of providing the requested services, a solicitation may be issued.

**All response will be confidential.**

### RESPONSE DEADLINE

Response must be received by no later than **2:00 PM** Alaska Time on **October 16, 2025**.

### RETURN INSTRUCTIONS

If submitting a response via email, the response may be emailed to [shawn.olsen@alaska.gov](mailto:shawn.olsen@alaska.gov) and must contain the RFI title in the subject line of the email. The **maximum** size of a single email (including all text and attachments) that can be received by the State is **20 Megabytes (MB)**. If the email containing the response exceeds this size, the response must be sent in multiple emails that are each less than 20 MB, and each email must comply with the requirements described above.

Please note that email transmission is not instantaneous. Like sending a hard copy response, if you are emailing your response, the State recommends sending it ahead of time to ensure the email is delivered by the deadline for receipt of response.

If submitting a response using U.S. mail or delivery service, vendors must submit one hard copy of their response, in writing, to the procurement officer in a sealed package. The sealed response package must be addressed as follows:

STATE OF ALASKA – REQUEST FOR INFORMATION (RFI):

CARBON OFFSET PROJECT SERVICES: REFORESTATION, BIOCHAR, AND BIOMASS BURIAL

---

Department of Natural Resources

Division of Support Services

Attention: Shawn M. Olsen

Request for Information (RFI): Carbon Offset Services: Reforestation, Biochar, and Biomass Burial

550 West 7<sup>th</sup> Avenue, Suite 1330

Anchorage, Alaska 99501

It is the vendor's responsibility to contact the issuing agency via email at [shawn.olsen@alaska.gov](mailto:shawn.olsen@alaska.gov) to confirm that the RFI response has been received. The State is not responsible for unreadable, corrupt, or missing attachments.

**POINT OF CONTACT**

Questions concerning this request must be directed to Shawn M. Olsen, Procurement Specialist 4, via email at [shawn.olsen@alaska.gov](mailto:shawn.olsen@alaska.gov).

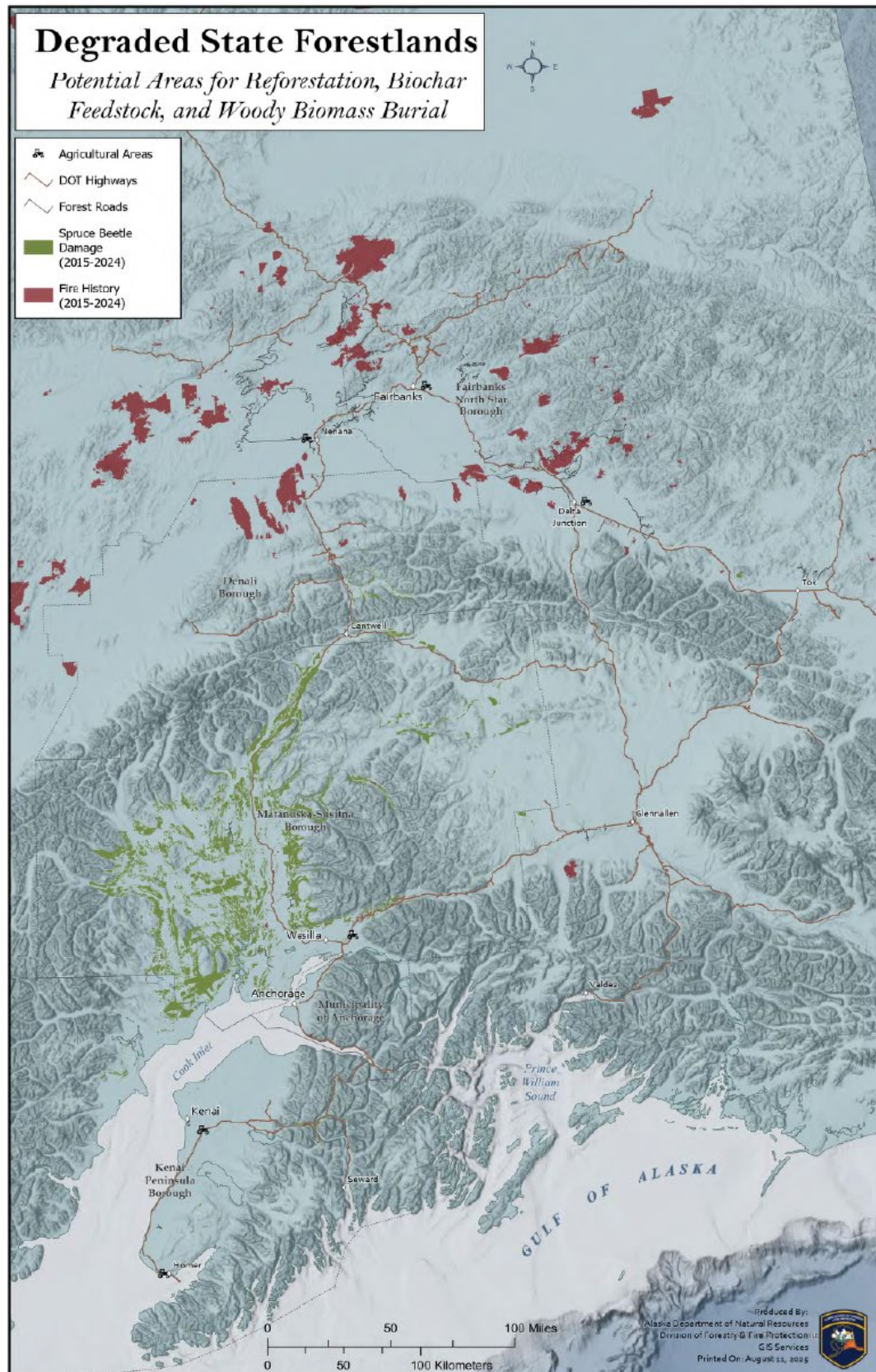
**NOTICE TO VENDORS**

Pursuant to [Administrative Order 352](#), (a) any person or business determined to support or participate in a boycott of the State of Israel will be disqualified from any procurement related to this Request for Information; and (b) the support of or participation in a boycott of the State of Israel by a person or business contracting with the State of Alaska under AS 36.30 constitutes grounds for termination of the contract.

[Administrative Order 352](#) does not apply to a contract if the vendor has fewer than 10 employees; or the amount to be paid under the contract, excluding renewals and options available under the contract, is less than \$100,000.00.



**Map A: Wildfire and Spruce Beetle Impacted State Forestlands**



**Map B: Spruce Beetle-Impacted State Forestlands**

