

STATE OF ALASKA

Department of Natural Resources
Support Services Division



ITB 10-001-26 PLANT MATERIALS CENTER – SEED HOUSE ADDITION

ADDENDUM 2

ISSUED JULY 28, 2025

This addendum serves to answer questions received from vendors and extend the deadline for submission of bids.

Important Note to Offerors: You are not required to sign and return this page of the addendum document with your bid. This Addendum is hereby made part of the ITB and is a total of five pages.

CHRIS Brooks

Procurement Specialist 5

Email: christopher.brooks@alaska.gov

Question 1: How old is the existing structure? If they need an exact color match, we may need to do a custom coil. This would potentially add an additional 6-8 weeks to the production lead time. If an existing standard color is acceptable, this would not be an issue.

Answer: An existing standard color would be fine. We would like a medium gray color for the metal siding. We have two buildings on the farm that are both medium gray with red trim. The medium gray metal siding on our other building (shop and cold storage barn) is from magic metals. The existing structure will be repainted in the future to match the medium gray color of the new addition. The existing structure was built in 1978. If a color sample is needed I can get photos.

Question 2: I am not seeing a spec for the type of venting required for the soffit. A true perforated requirement would have a spec of NFA % and hole pattern versus a standard lanced style soffit would be more straightforward.

Answer: See Specification 07 41 13 Section 2.1.C and Addendum 2 supporting documents. Metal Soffit Panels: Net Free Area: 25% minimum.

Question 3: The ITB does not specify a warranty period for the completed work. Is it correct to assume a standard one (1) year warranty applies?

Answer: Yes, a 1-year warranty will be required.

Question 4: The ITB states that the contractor must adhere to indemnification and insurance requirements throughout the contract's duration. However, the specific insurance requirements are not listed in the document. Could you please provide the required insurance coverage and limits?

Answer: See the attached Appendix B1 which outlines the State of Alaska insurance requirements for this project.

Question 5: Will builder's risk insurance be required for this project? If so, should the policy include coverage for flood and earthquake damage?

Answer: See the attached Appendix B1 which outlines the State of Alaska insurance requirements for this project.

Question 6: The SOW indicates that a list of subcontractors must be submitted with the bid. However, the list of required documents implies that the subcontractor list is only required after the notice of apparent low bidder. Please clarify when the subcontractor list should be submitted.

Answer: The subcontractor list is required five working days after the apparent low bidder has been identified.

Question 7: Is the Engineers Estimate for the entire build covering Structural, Architectural, Civil, Mechanical and Electrical base bid portions? It does not seem to align with the 10 page redacted engineers estimate that we have received.

Answer: The budget for this solicitation is \$200,000.00 and includes all work identified under the Scope of Work section. The quantities were provided for reference only and the contractor is required to verify all quantities per provided plans and specifications.

Question 8: What are the facility's work hours? Will the contractor be allowed to work additional hours or weekends if needed?

Answer: The facility work hours are 7:00a.m – 5:00p.m. However, the contractor will be allowed to work additional hours if coordinated with the facility manager.

Question 9: What is the anticipated NTP date?

Answer: The estimated Notice to Proceed date is the week of August 11, 2025.

Question 10: Are there any owner-provided materials and FFEs? If so, are any cut sheets available, and will the contractor be required to install them?

Answer: Air compressor See M210.

Question 11: Can the due date be extended to an additional week?

Answer: The deadline for submission of bids has been extended to August 7, 2025 at 2:00 PM AK Time.

Question 12: Are utilities included, or do they need to be monitored/provided?

Answer: Utilities are not included. Power will not be supplied to the building due to major utility upgrades. Water can be supplied if needed.

Question 13: Is the contractor responsible for hiring the special inspector, or is one contracted by the owner?

Answer: Contractor to provide Special inspector(s).

Question 14: Sheet 2/C700 shows a doweled expansion joint, but nowhere on the drawings can we find where it applies. Please clarify why it's included in the drawings.

Answer: Detail should have been removed from plans. Not applicable to final design.

Question 15: Will the contractor be given an area for onsite storage?

Answer: Yes, onsite storage can be accommodated for supplies and equipment. Location and time frame of storage needs to be coordinated with the facility manager.

Question 16: Will the contractor be given a space for a field office?

Answer: No space will be available for a field office.

Question 17: The specifications and drawings differ regarding pipe insulation. The drawings show a 3" urethane pipe wrap on 1/C701, while spec sections 33 11 00 and 33 31 00 indicate spray foam insulation. Is the 3" pipe wrap shown on the drawings the intended material?

Answer: Pipe insulation shall meet specifications.

Question 18: A spec section for seeding is included, but nowhere on the drawings does it indicate where reseeding is being done. Please clarify.

Answer: Reseeding is only associated with restoration of maintained lawn area after disruption by site work activities.

Question 19: Sheet A121 shows a mechanical room demolition being done by others. Sheet M100 shows the mechanical room demolition performed by the contractor. No electrical demo is shown of this mechanical room. Please clarify the extent of demolition being performed by the contractor, if any.

Answer: There is no demolition required.

Question 20: We attempted to schedule a site visit with the person listed in the ITB several times, but heard no response. We want to visit the site prior to the bid date. Please provide an alternate contact.

Answer: Contact the facility manager at 907-745-4469 or 907-982-7959 to schedule a site visit.

Question 21: Who is responsible for obtaining and paying for permitting?

Answer: Owner will obtain permit.

Question 22: Will a SWPPP be required?

Answer: No, a SWPPP will not be required for this project.

END OF ADDENDUM 2

APPENDIX B¹

INDEMNITY AND INSURANCE

Article 1. Indemnification

The Contractor shall indemnify, hold harmless, and defend the contracting agency from and against any claim of, or liability for error, omission or negligent act of the Contractor under this agreement. The Contractor shall not be required to indemnify the contracting agency for a claim of, or liability for, the independent negligence of the contracting agency. If there is a claim of, or liability for, the joint negligent error or omission of the Contractor and the independent negligence of the Contracting agency, the indemnification and hold harmless obligation shall be apportioned on a comparative fault basis. "Contractor" and "Contracting agency", as used within this and the following article, include the employees, agents and other contractors who are directly responsible, respectively, to each. The term "independent negligence" is negligence other than in the Contracting agency's selection, administration, monitoring, or controlling of the Contractor and in approving or accepting the Contractor's work.

Article 2. Insurance

Without limiting contractor's indemnification, it is agreed that contractor shall purchase at its own expense and maintain in force at all times during the performance of services under this agreement the following policies of insurance. Where specific limits are shown, it is understood that they shall be the minimum acceptable limits. If the contractor's policy contains higher limits, the state shall be entitled to coverage to the extent of such higher limits. Certificates of Insurance must be furnished to the contracting officer prior to beginning work and must provide for a notice of cancellation, non-renewal, or material change of conditions in accordance with policy provisions. Failure to furnish satisfactory evidence of insurance or lapse of the policy is a material breach of this contract and shall be grounds for termination of the contractor's services. All insurance policies shall comply with and be issued by insurers licensed to transact the business of insurance under AS 21.

2.1 Workers' Compensation Insurance: The Contractor shall provide and maintain, for all employees engaged in work under this contract, coverage as required by AS 23.30.045, and; where applicable, any other statutory obligations including but not limited to Federal U.S.L. & H. and Jones Act requirements. The policy must waive subrogation against the State.

2.2 Commercial General Liability Insurance: covering all business premises and operations used by the Contractor in the performance of services under this agreement with minimum coverage limits of \$300,000 combined single limit per claim.

2.3 Commercial Automobile Liability Insurance: covering all vehicles used by the Contractor in the performance of services under this agreement with minimum coverage limits of \$300,000 combined single limit per claim.

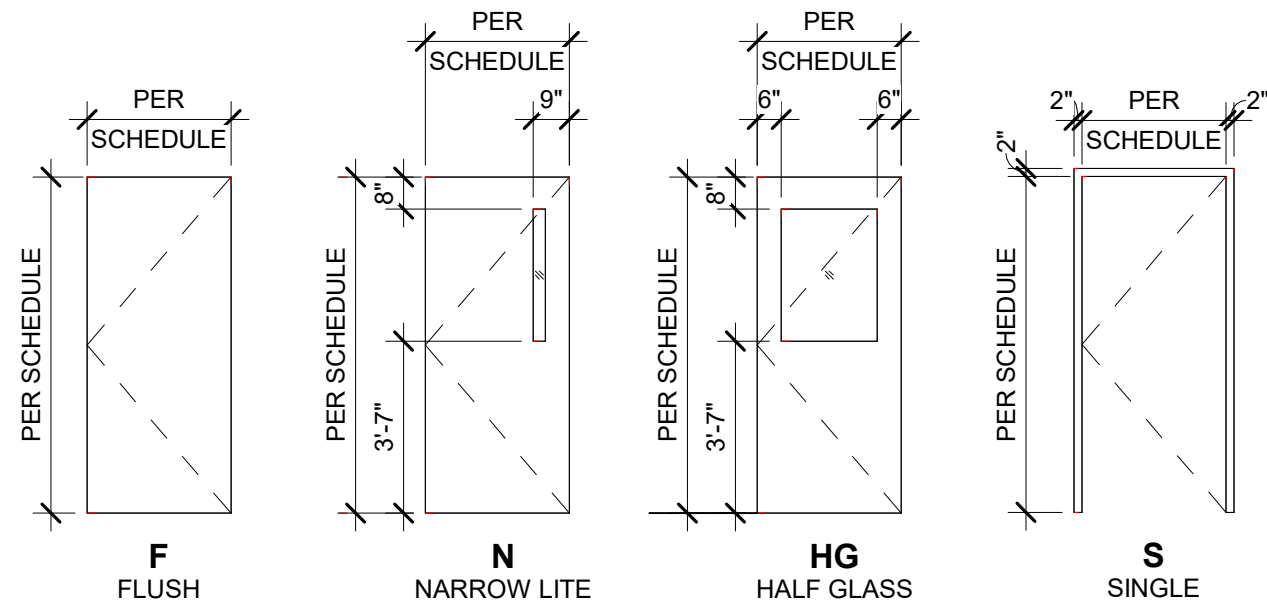
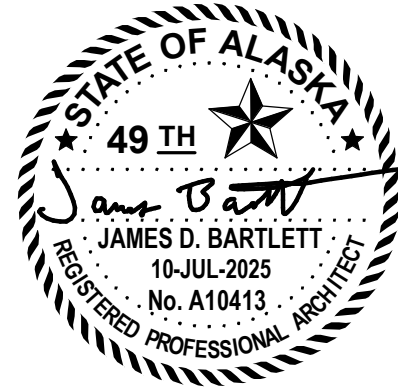
ROOM SCHEDULE										
ROOM		FLOOR		WALL	WAINSCOT		CEILING		ROOM	
NUMBER	NAME	FINISH	BASE	FINISH	FINISH	HEIGHT	FINISH	HEIGHT	REMARKS	NUMBER
156	MECHANICAL ROOM	SEAL-1	RB-1	PNT-50	--	--	PNT-80	VARIES		156
157	OFFICE	SEAL-1	RB-1	PNT-50	--	--	PNT-80	VARIES		157
158	TOOL ROOM	SEAL-1	RB-1	PNT-50	--	--	PNT-80	VARIES		158
159	RESTROOM	SEAL-1	RB-1	PNT-50	FRP-1	4'-4"	PNT-80	8'-0"		159

ROOM SCHEDULE REMARKS

1. NOT USED

ROOM SCHEDULE NOTES

- A. SEE MATERIAL SCHEDULE FOR FINISH INFORMATION.
- B. SEE ASSEMBLY TYPES FOR FINISH SUBSTRATES.
- C. SEE INTERIOR ELEVATIONS WHERE FLOOR BASE VARIES.
- D. SEE INTERIOR ELEVATIONS FOR LOCATION AND EXTENT OF WAINSCOT.
- E. SEE DOOR SCHEDULE FOR DOOR FINISHES.
- F. PROVIDE FINISHES TO FULL HEIGHT OF WALL UNLESS NOTED OTHERWISE.
- G. PATCH AND REPAIR EXISTING SURFACES DAMAGED BY WORK. MATCH ADJACENT FINISHES. PAINT BEYOND DAMAGED AREA EXTENDING FROM CORNER TO CORNER OF AFFECTED SURFACES.



DOOR TYPES

FRAME TYPES

DOOR SCHEDULE											
DOOR NUMBER	DIMENSIONS		CONSTRUCTION	DOOR		CONSTRUCTION	FRAME		HARDWARE GROUP	REMARKS	DOOR NUMBER
	WIDTH	HEIGHT		TYPE	FINISH		TYPE	FINISH			
156A	3'-6"	7'-0"	INHM	F	PNT-20	TBHM	S	PNT-30	2	1.	156A
157A	3'-0"	7'-0"	INHM	HG	PNT-20	TBHM	S	PNT-30	2	1.	157A
157B	3'-0"	7'-0"	WD	N	WD-1	HM	S	PNT-70	2	1.	157B
158A	3'-0"	7'-0"	INHM	N	PNT-20	TBHM	S	PNT-30	2	1.	158A
159A	3'-0"	7'-0"	WD	F	WD-1	HM	S	PNT-70	1	1.	159A

HARDWARE GROUPS

HDW-1
3 HINGES
1 LEVER / PRIVACY LOCKSET
1 CLOSER
1 KICK PLATE
1 OVERHEAD STOP OR WALL STOP
1 PERIMETER GASKETING

HDW-2
3 HINGES
1 LOCKSET (OFFICE/STORAGE)
1 THRESHOLD (EXTERIOR ONLY)
1 CLOSER
1 PERIMETER GASKETING
1 KICK PLATE

DOOR SCHEDULE AND TYPE NOTES

- A. SEE EXTERIOR ASSEMBLIES AND DETAILS.
- B. SEE INTERIOR ASSEMBLIES AND DETAILS.
- C. COORDINATE ROUGH OPENING AND SHIM SPACE WITH MANUFACTURER.
- D. PROVIDE SHIM SPACE ALL SIDES OF EXTERIOR DOORS TO MAINTAIN ADEQUATE SPACE FOR FULL DEPTH SPRA FOAM INSULATION. CONTRACTOR IS RESPONSIBLE FOR COORDINATION AND ACCURACY OF SHOP DRAWINGS.
- E. DOOR AND FRAME TYPES REPRESENTED AS VIEWED FROM EXTERIOR SIDE UNLESS NOTED OTHERWISE.
- F. FOR DOORS AND FRAMES INSTALLED WITH INTERIOR ON BOTH SIDES, SEE PLANS AND ELEVATIONS FOR ORIENTATION.

DOOR SCHEDULE REMARKS

1. MATCH EXISTING KEYING SYSTEM

DOOR SCHEDULE ABBREVIATIONS

SEE A001 FOR STANDARD ARCHITECTURAL ABBREVIATIONS
SEE MATERIAL SCHEDULE FOR MATERIAL TYPES

HM	HOLLOW METAL
INHM	INSULATED HOLLOW METAL
TBHM	THERMALLY BROKEN HOLLOW METAL
WD	WOOD

MATERIAL SCHEDULE								
SPEC	TYPE	DESCRIPTION	LOCATION	BASIS OF DESIGN			REMARKS	
				MANUFACTURER	MODEL	COLOR	LOW EMITTING	MISCELLANEOUS
03 30 00 - CONCRETE - CAST-IN-PLACE CONCRETE								
03 30 00	SEAL-1	CONCRETE SEALER	PER ROOM SCHEDULE	DAYTON SUPERIOR	PENTRA-HARD	CLEAR	LE-B	SEAL-1
07 00 00 - THERMAL AND MOISTURE PROTECTION								
07 00 00	SNO-1	SNOW GUARD	PER ROOF PLAN	S-5I	COLORGARD 2.0	MFSD		SNO-1
07 25 00 - THERMAL AND MOISTURE PROTECTION - WEATHER BARRIERS								
07 25 00	BE-4	SHEETING - AIR / VAPOR BARRIER (AVB)	PER ASSEMBLY TYPES	HUSKY	POLYETHYLENE FILM (MIL PER SPEC)	NOT APPLICABLE		BE-4
07 25 00	BE-5	WALL - AIR / WATER BARRIER (AWB)	PER ASSEMBLY TYPES	VAPRO SHIELD	WRAP SHIELD SA	NOT APPLICABLE		BE-5
07 25 00	BE-C1	SEISMIC JOINT AIR BARRIER	PER ASSEMBLY TYPES / DETAILS	VAPROSHIELD	VAPROSILICONE	NOT APPLICABLE		BE-C1
07 30 00 - THERMAL AND MOISTURE PROTECTION - STEEP SLOPED ROOFING								
07 30 05	BE-7	ROOF UNDERLAY - VAPOR PERMEABLE AIR / WATER BARRIER (AWB)	PER ASSEMBLY TYPES	VAPRO SHIELD	SLOPE SHIELD PLUS SA	NOT APPLICABLE		BE-7
07 40 00 - THERMAL AND MOISTURE PROTECTION - ROOFING AND SIDING PANELS								
07 40 00	MTF-1	METAL FLASHING AT ROOFING	PER EXTERIOR ELEVATIONS	METAL SALES	ACCESSORIES AND TRIM	MATCH MTR-1		MTF-1
07 41 13	MTR-1	METAL ROOF PANELS	PER EXTERIOR ELEVATIONS	METAL SALES	PBU-PANEL	MATCH EXISTING GREEN		MTR-1
07 42 13	MTS-1	METAL SOFFIT - VENTED	PER CEILING PLAN	METAL SALES	SOFFIT PANEL FLAT - PERFORATED	MATCH MTW-1		MTS-1
07 42 13	MTW-1	METAL WALL PANELS - EXPOSED FASTENERS	PER EXTERIOR ELEVATIONS	METAL SALES	BI-RIB	MATCH EXISTING GRAY		MTW-1
08 10 00 - OPENINGS - DOORS AND FRAMES								
08 14 16	WD-1	FLUSH WOOD DOOR	PER DOOR SCHEDULE	VT INDUSTRIES	HERITAGE - FLUSH WOOD VENEER	WHITE OAK - CLEAR CL18		WD-1
09 60 00 - FINISHES - FLOORING								
09 65 00	RB-1	RUBBER BASE	PER ROOM SCHEDULE	ROPPE	700 SERIES	DARK GRAY 150	LE-D	RB-1
09 70 00 - FINISHES - WALL FINISHES								
09 77 33	FRP-1	FIBER REINFORCED PLASTIC	PER ROOM SCHEDULE	CRANE COMPOSITES	CLASSICS	BRUSHED METAL	LE-C	FRP-1
09 90 00 - FINISHES - PAINTING AND COATING								
09 91 13	PNT-20	EXTERIOR PAINT - DOOR	PER DOOR SCHEDULE	SHERWIN WILLIAMS	EXTERIOR ACRYLIC LATEX	MATCH EXISTING		PNT-20
09 91 13	PNT-30	EXTERIOR PAINT - DOOR FRAME	PER DOOR SCHEDULE	SHERWIN WILLIAMS	EXTERIOR ACRYLIC LATEX	MATCH EXISTING		PNT-30
09 91 23	PNT-50	INTERIOR PAINT - WALL	PER ROOM SCHEDULE	SHERWIN WILLIAMS	PROMAR 200 INTERIOR LATEX - EGGSHELL FINISH	SW7005 PURE WHITE	LE-F	PNT-50
09 91 23	PNT-70	INTERIOR PAINT - DOOR FRAME	PER DOOR SCHEDULE	SHERWIN WILLIAMS	PROMAR 200 INTERIOR LATEX	MATCH RB-1	LE-F	PNT-70
09 91 23	PNT-80	INTERIOR PAINT - CEILING	PER ROOM SCHEDULE	SHERWIN WILLIAMS	PROMAR 200 INTERIOR LATEX - MATTE FINISH	SW7005 PURE WHITE	LE-F	PNT-80
10 20 00 - SPECIALTIES - INTERIOR SPECIALTIES								
10 26 01	CG-48	CORNER GUARD	PER FLOOR PLAN	PAWLING CORPORATION	CG-10 - 48"	STAINLESS STEEL		CG-48
10 28 00	MIRR-1830	MIRROR - 18 x 30	PER INTERIOR ELEVATIONS	BOBRICK	B-293 1830	STAINLESS STEEL		MIRR-1830
10 28 00	NPKN-R1	SANITARY NAPKIN DISPOSAL (RECEPTACLE)	PER INTERIOR ELEVATIONS	BOBRICK	B-254	STAINLESS STEEL		NPKN-R1
10 28 00	TOWL-1	PAPER TOWEL DISPENSER	PER INTERIOR ELEVATIONS	BOBRICK	B-262	STAINLESS STEEL		TOWL-1
10 28 00	TP-1	TOILET TISSUE PAPER - VERTICAL	PER INTERIOR ELEVATIONS	BOBRICK	B-2892	STAINLESS STEEL		TP-1
10 40 00 - SPECIALTIES - SAFETY SPECIALTIES								
10 44 00	FE-1	FIRE EXTINGUISHER	PER CODE PLAN	PER SPECS	PER SPECS	MFSD		FE-1

MATERIAL SCHEDULE NOTES

- A. SEE EXTERIOR ELEVATIONS, CEILING PLANS, INTERIOR ELEVATIONS, AND ROOM SCHEDULE FOR LOCATION OF FINISHES.
- B. THE MATERIAL SCHEDULE PROVIDES A BASIS OF DESIGN SEE SPECIFICATIONS FOR PRODUCT INFORMATION, PERFORMANCE CRITERIA, AND ACCEPTABLE ALTERNATIVE MANUFACTURERS.
- C. THE MATERIAL SCHEDULE IS ORGANIZED BY SPEC NUMBER. MATERIALS WITH SPEC NUMBERS INCLUDING 'NA' PROVIDE A BASIS OF DESIGN WITH NO CORRELATING SPEC SECTION.

MATERIAL SCHEDULE REMARKS

MISCELLANEOUS

1. NOT USED

LOW EMITTING

LE-C ADHESIVES, SEALANTS, AND SEALANT PRIMERS APPLIED TO INTERIOR ELEMENTS MUST COMPLY WITH SCAQMD RULE 1168 AS OF 01 JULY 2005. AEROSOL ADHESIVES APPLIED TO INTERIOR ELEMENTS MUST COMPLY WITH GREEN SEAL GS-36 AS OF 19 OCTOBER 2000.

LE-D HARD SURFACE FLOORING AND WALL BASE MUST BE FLOORSORE CERTIFIED.

LE-F ARCHITECTURAL PAINTS AND COATINGS APPLIED TO INTERIOR ELEMENTS MUST NOT EXCEED THE VOC CONTENT LIMITS ESTABLISHED IN GREEN SEAL STANDARD GS-11 AS OF 20 MAY 1993.

MATERIAL SCHEDULE ABBREVIATIONS

SEE A001 FOR STANDARD ARCHITECTURAL ABBREVIATIONS
MATERIAL TYPES DEFINED IN MATERIAL SCHEDULE

MFSD MANUFACTURER'S STANDARD

1 ADDENDUM 1 25 JUL 2025

PMC SEED HOUSE ADDITION

ISSUE DATE 10 JUL 2025

COMM. NUMBER 86250

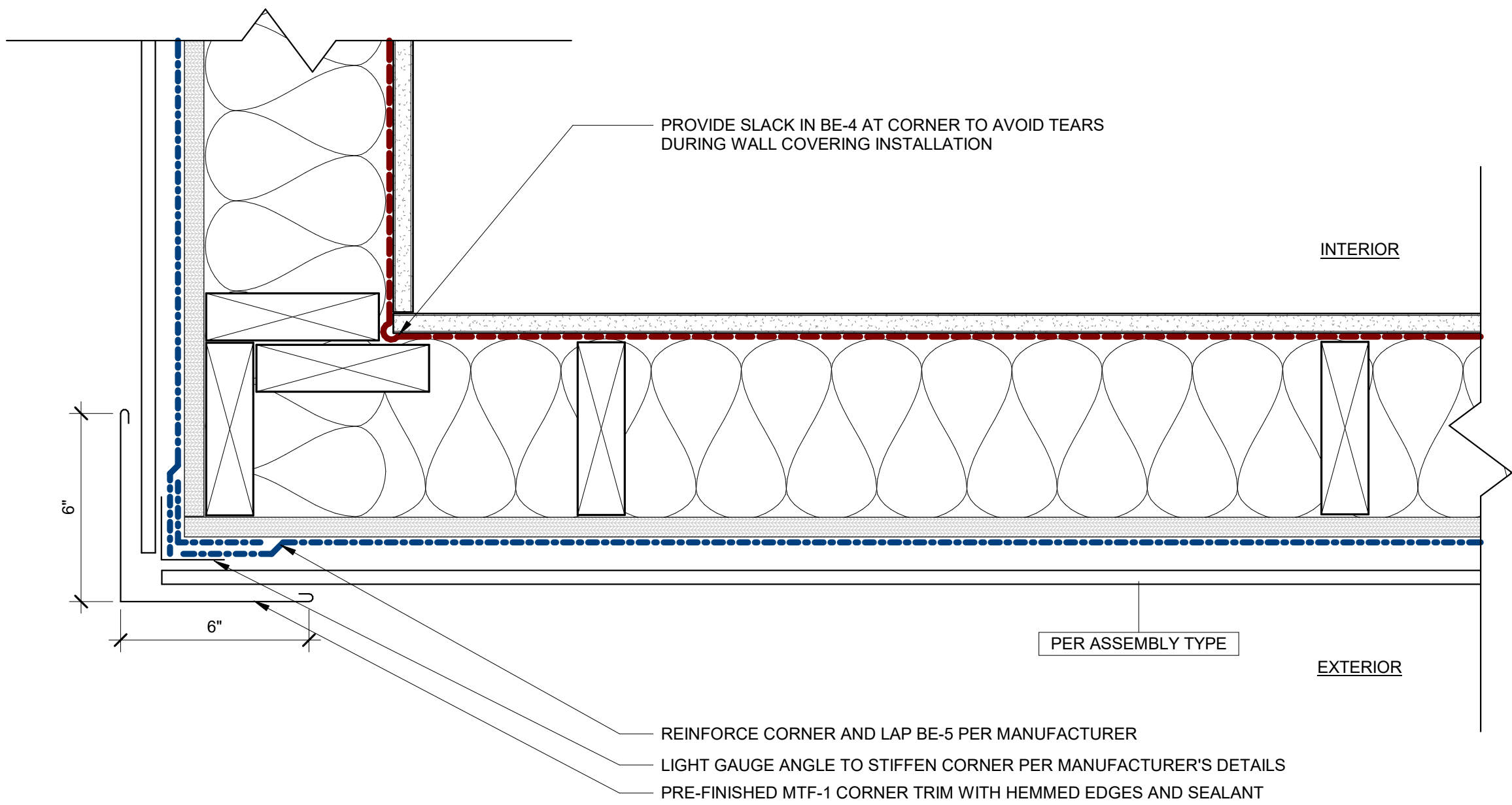
DESIGNED BY JE

DRAWN BY AA

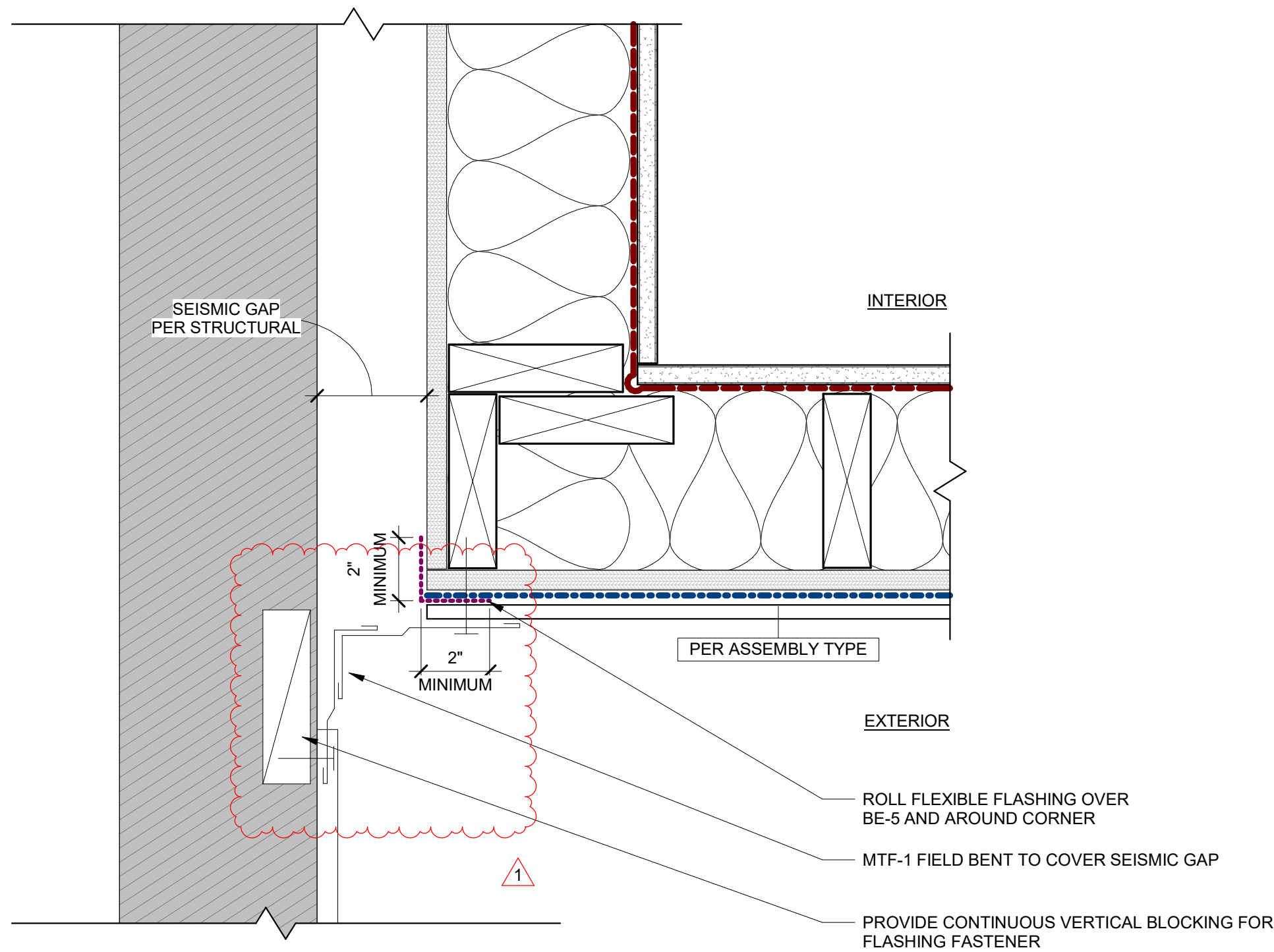
SCALE 0"

ARCHITECTURAL SCHEDULES AND TYPES

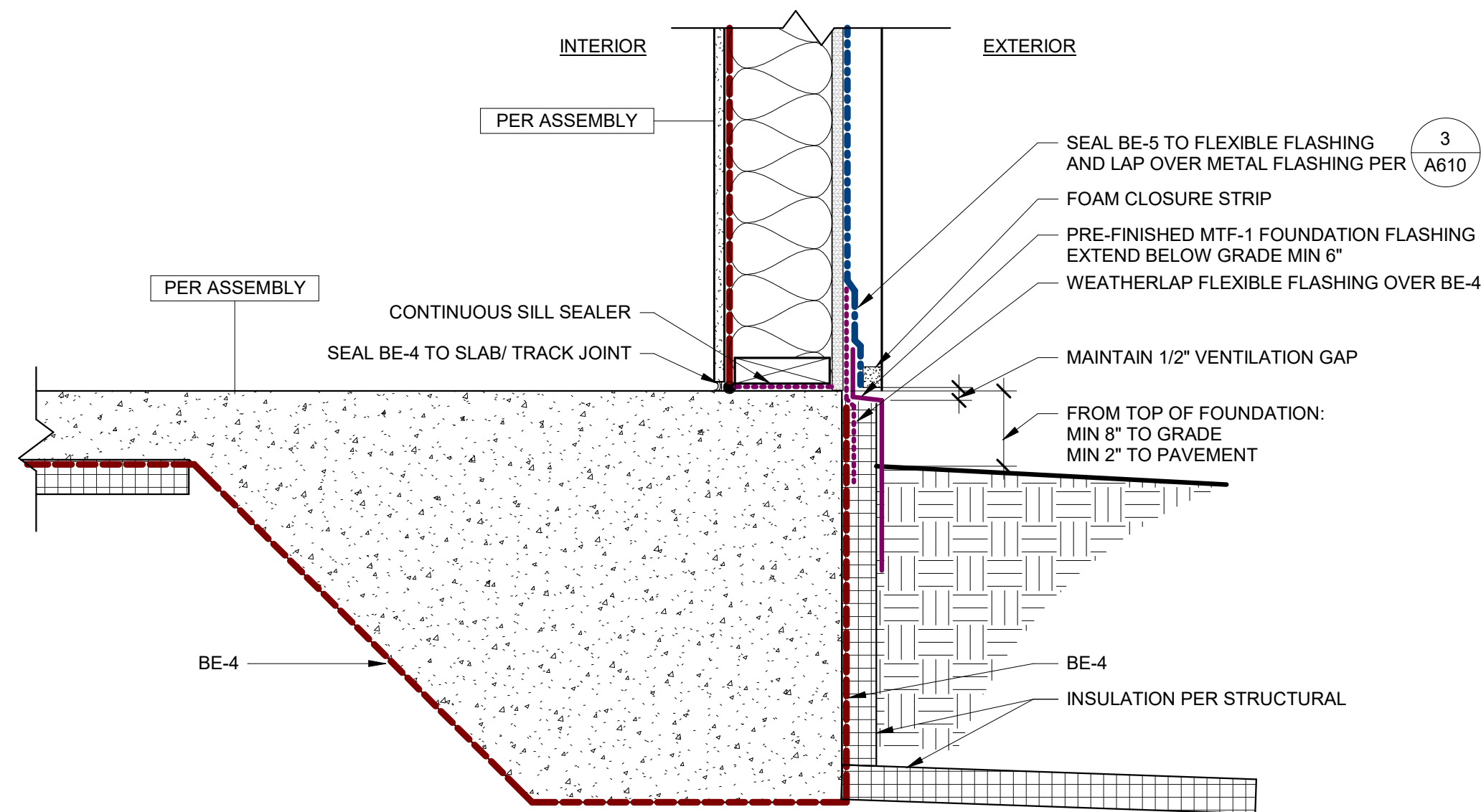
A030



1 EXTERIOR DETAIL - WALL - OUTSIDE BUILDING CORNER
3" = 1'-0"



2 EXTERIOR DETAIL - SEISMIC GAP FLASHING
3" = 1'-0"



3 EXTERIOR DETAIL - FOUNDATION - BASE OF WALL
1 1/2" = 1'-0"

EXTERIOR DETAIL NOTES

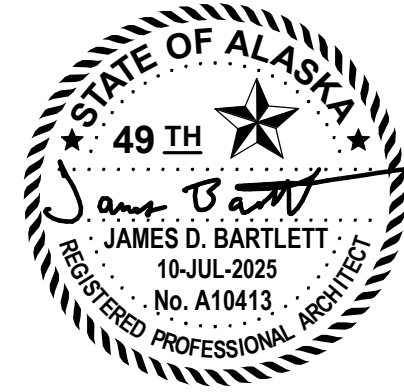
A. SEE FIRST SHEET IN SERIES FOR EXTERIOR DETAIL NOTES.

EXTERIOR DETAIL LEGEND



BUILDING ENVELOPE INDEX

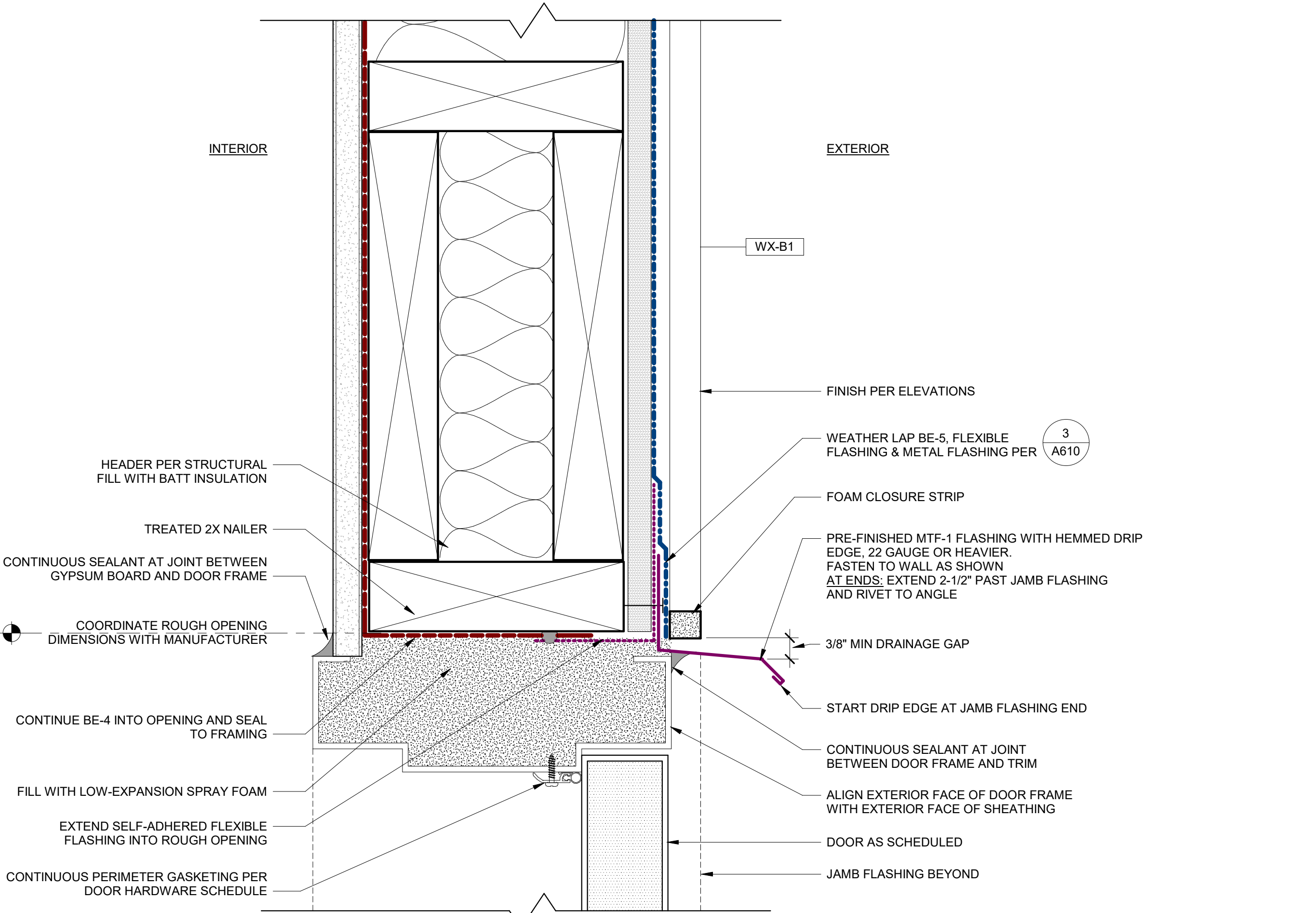
TYPE	BASIS OF DESIGN - PER MATERIAL SCHEDULE
BE-4	POLYETHYLENE FILM (MIL PER SPEC)
BE-5	WRAP SHIELD SA
BE-7	SLOPE SHIELD PLUS SA
BE-C1	VAPROSILICONE



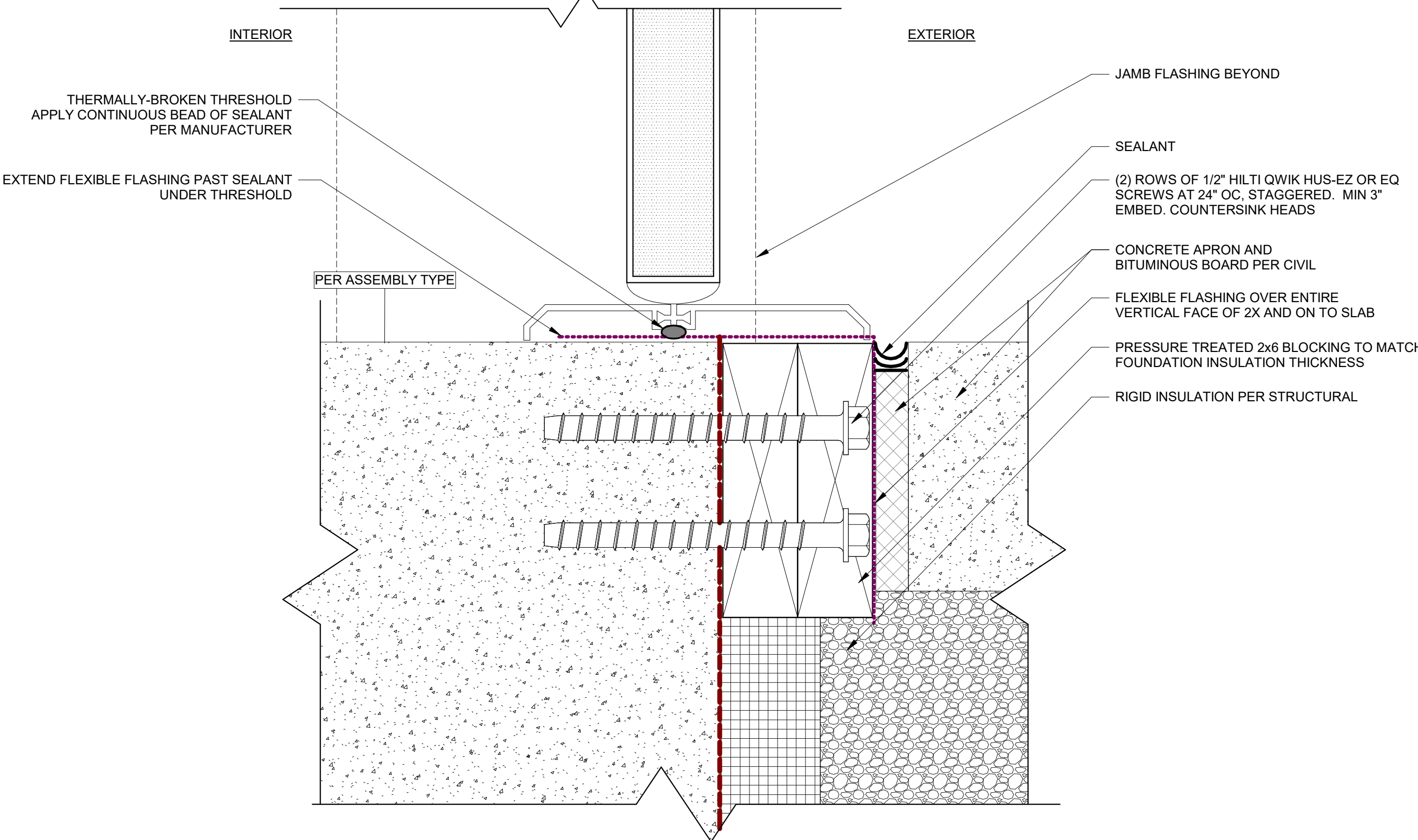
PMC SEED HOUSE
ADDITION

ISSUE DATE 10 JUL 2025
COMM. NUMBER 862501
DESIGNED BY JB
DRAWN BY AAT
SCALE 0" = 1"

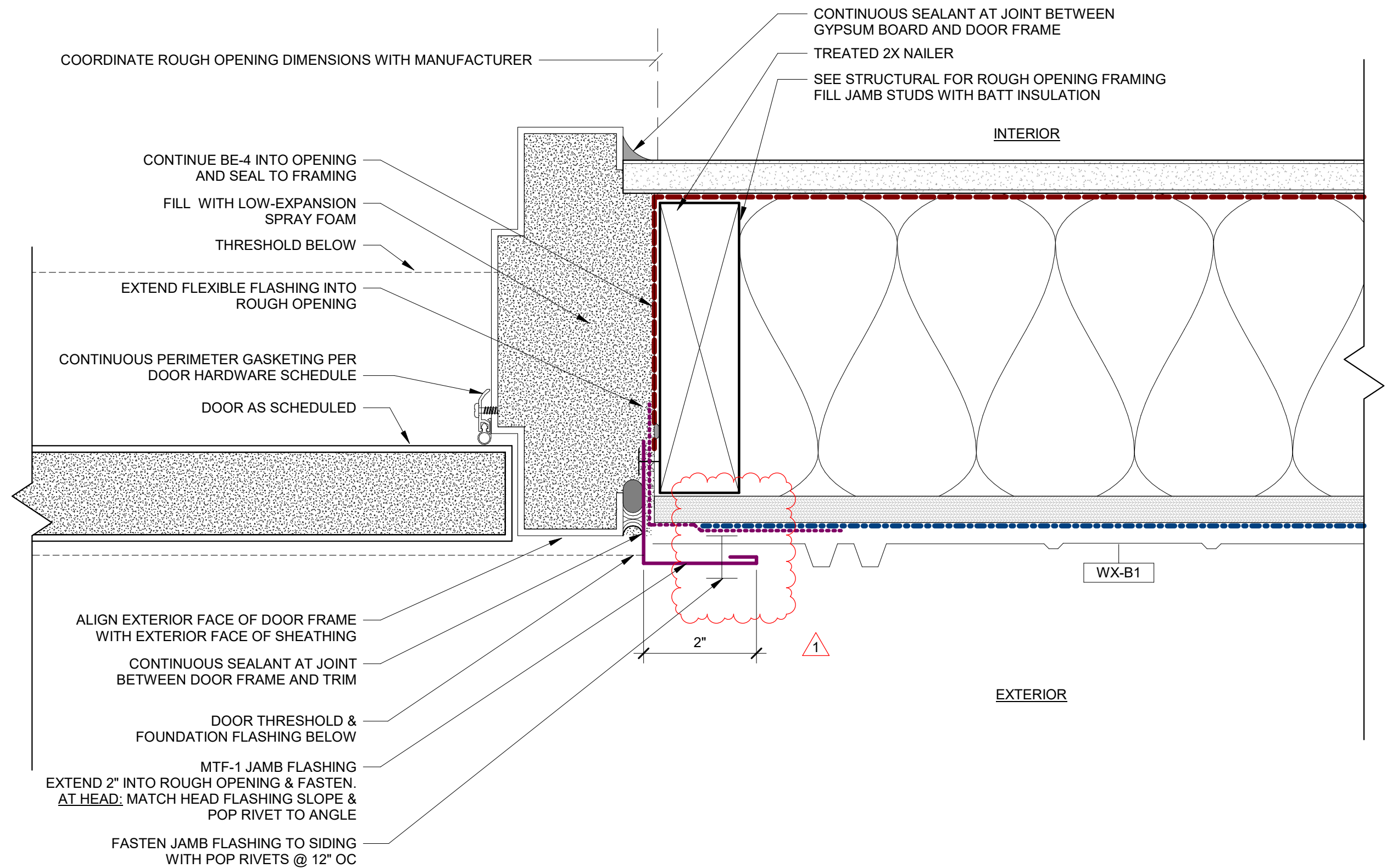
ARCHITECTURAL
DETAILS -
EXTERIOR WALL



1 EXTERIOR DETAIL - WALL OPENING - DOOR HEAD - METAL TRIM
6" = 1'-0"



2 EXTERIOR DETAIL - WALL OPENING - DOOR SILL - CONCEALED GAP
6" = 1'-0"



3 EXTERIOR DETAIL - WALL OPENING - DOOR JAMB - METAL TRIM
6" = 1'-0"

EXTERIOR DETAIL NOTES

A. SEE FIRST SHEET IN SERIES FOR EXTERIOR DETAIL NOTES.

BUILDING ENVELOPE INDEX

TYPE	BASIS OF DESIGN - PER MATERIAL SCHEDULE
BE-4	POLYETHYLENE FILM (MIL PER SPEC)
BE-5	WRAP SHIELD SA
BE-7	SLOPE SHIELD PLUS SA
BE-C1	VAPROSILICONE

Design
Alaska

Architects · Engineers · Surveyors
601 College Road, Fairbanks, AK 99701
907.452.1241 AECC511 designalaska.com



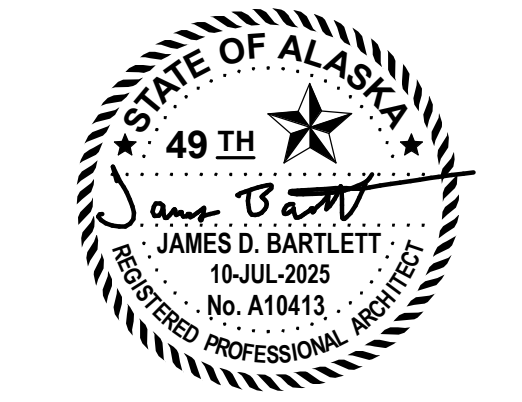
1 ADDENDUM 1 25 JUL 2025

PMC SEED HOUSE
ADDITION

ISSUE DATE 10 JUL 2025
COMM. NUMBER 862501
DESIGNED BY JB
DRAWN BY AAT
SCALE 0" = 1"

ARCHITECTURAL
DETAILS -
EXTERIOR WALL
OPENING - DOORS

A640



EXTERIOR DETAIL NOTES

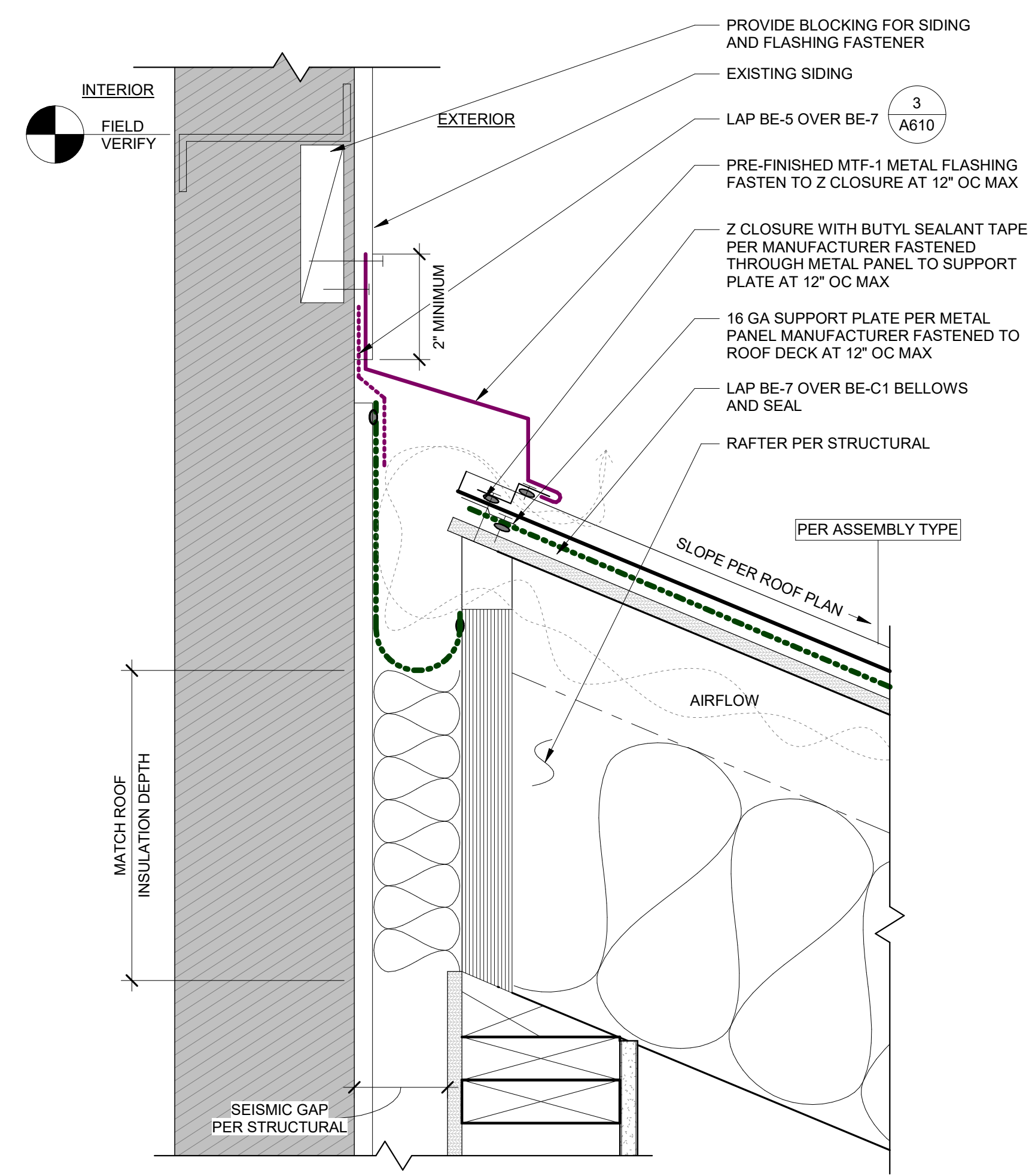
A. SEE FIRST SHEET IN SERIES FOR EXTERIOR DETAIL NOTES.

EXTERIOR DETAIL LEGEND

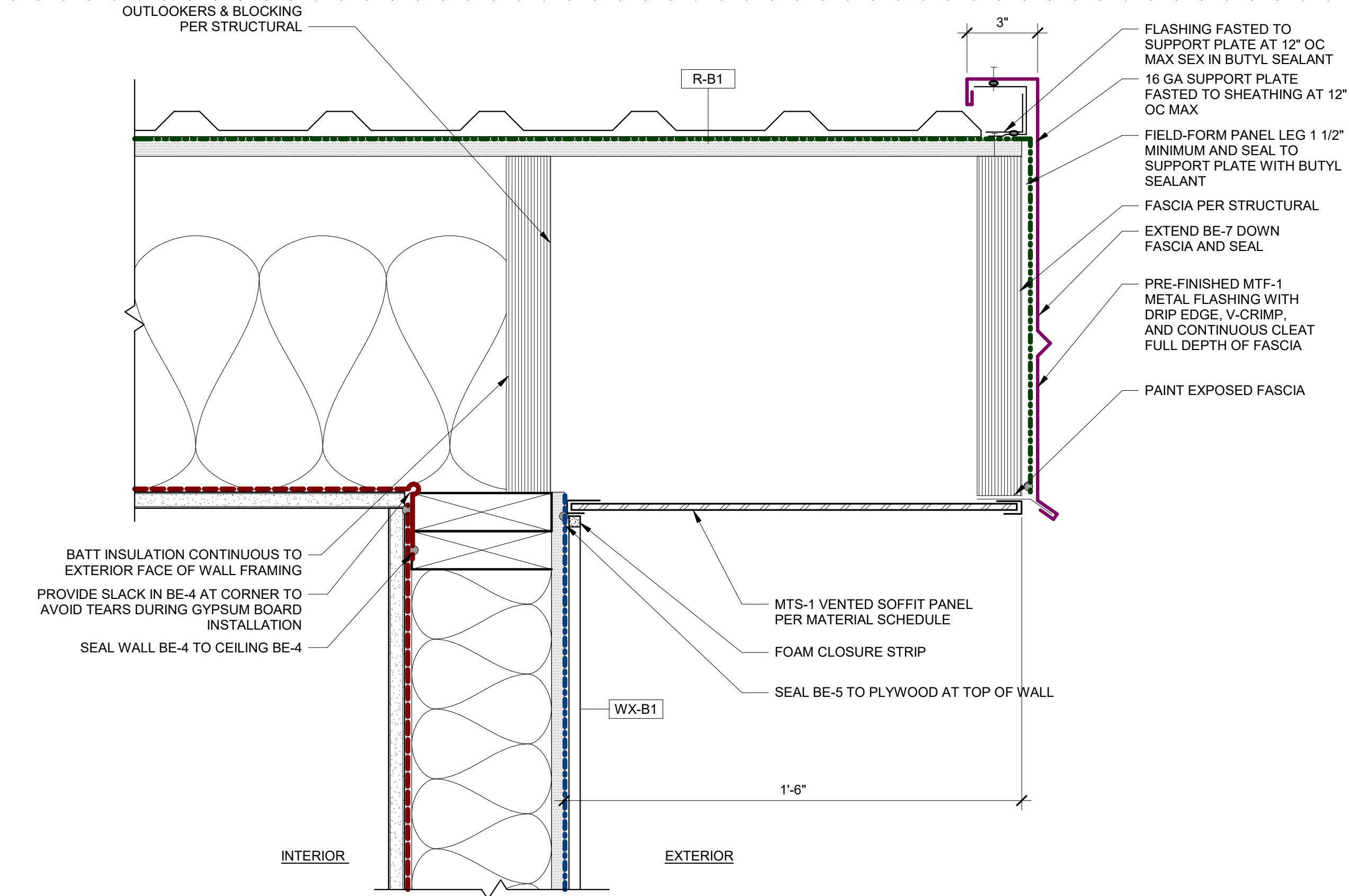


BUILDING ENVELOPE INDEX

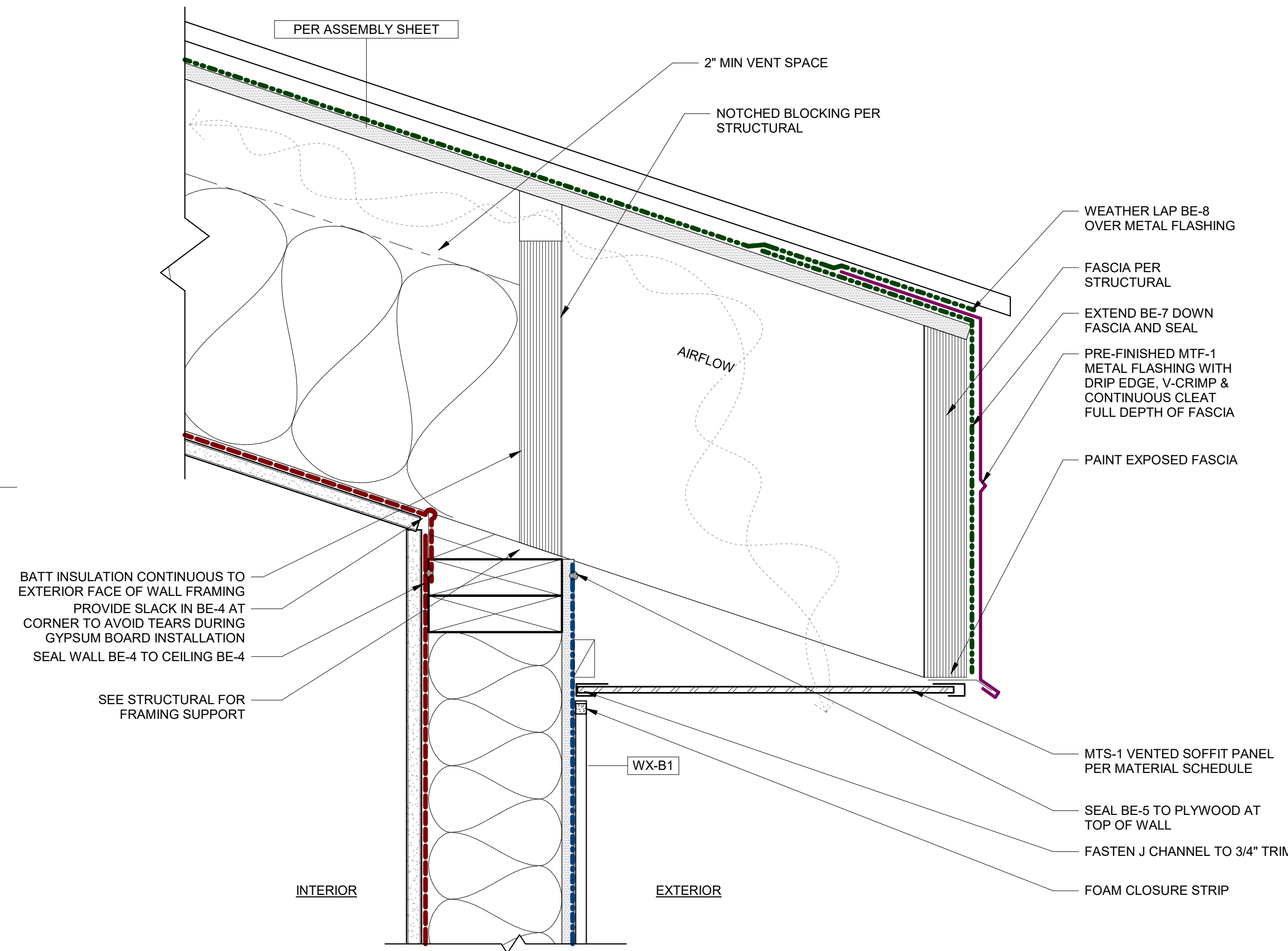
TYPE	BASIS OF DESIGN - PER MATERIAL SCHEDULE
BE-4	POLYETHYLENE FILM (MIL PER SPEC)
BE-5	WRAP SHIELD SA
BE-7	SLOPE SHIELD PLUS SA
BE-C1	VAPROSILICONE



1 EXTERIOR DETAIL - WALL ROOF TRANSITION - ENDWALL
3" = 1'-0"



2 EXTERIOR DETAIL - WALL ROOF TRANSITION - RAKE
3" = 1'-0"



3 EXTERIOR DETAIL - WALL ROOF TRANSITION - EAVE
3" = 1'-0"

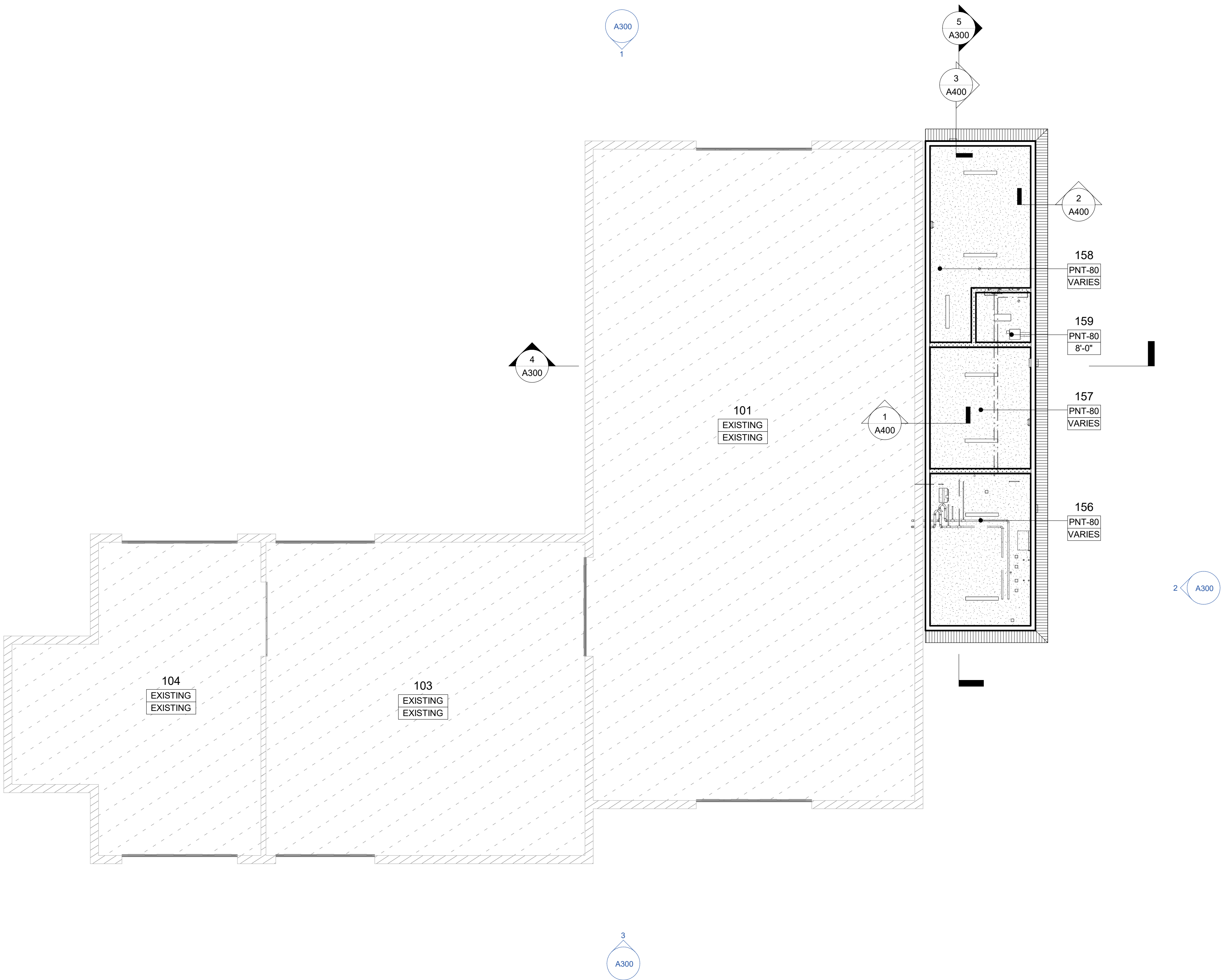
1 ADDENDUM 1 25 JUL 2025

PMC SEED HOUSE
ADDITION

ISSUE DATE 10 JUL 2025
COMM. NUMBER 862501
DESIGNED BY JB
DRAWN BY AAT
SCALE 0" = 1"

ARCHITECTURAL
DETAILS -
EXTERIOR ROOF
AND CANOPY

A670



INTERIOR DETAIL NOTES - CEILING

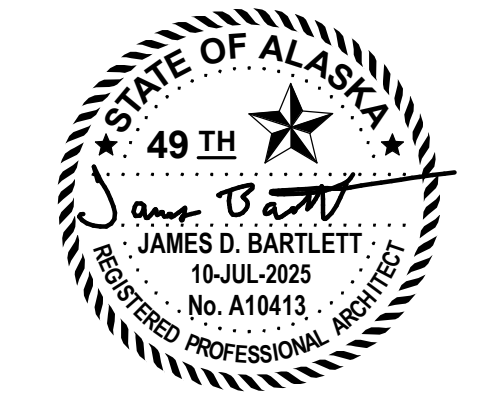
- A. SEE ASSEMBLY TYPES FOR ADDITIONAL INFORMATION.
B. SEE ROOM SCHEDULES FOR CEILING FINISHES, ASSEMBLY TYPES, AND HEIGHTS.

INTERIOR DETAIL LEGEND

- NO ARCHITECTURAL WORK THIS AREA
- EXISTING
- PNT-80, AS SCHEDULED
- MTS-1

**Design
Alaska**

Architects · Engineers · Surveyors
601 College Road Fairbanks AK 99701
907.452.1241 AECC511 designalaska.com



1 ADDENDUM 1 25 JUL 2025

**PMC SEED HOUSE
ADDITION**

ISSUE DATE 10 JUL 2025
COMM. NUMBER 862501
DESIGNED BY JB
DRAWN BY AAT
SCALE 0" 1"

**INTERIOR DESIGN
PLAN - CEILING**

A701

1 INTERIOR DESIGN PLAN - CEILING
A701 1/8" = 1'-0"