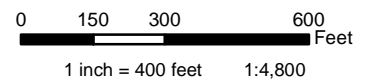


- Public Land Survey Section
- Constructed Pad (5.63 Acres in Wetlands)
- Proposed Pad (16.24 Acres in Wetlands)



Applicant: Afognak Leasing, LLC

File No.: POA-2018-00302

Waterway: Miluveach River

Proposed Activity: Cama'i Gravel Pad,
Previously Authorized by POA-2018-00302

Umiat Meridian, T10N, R8E, Sections 4, 5, 33

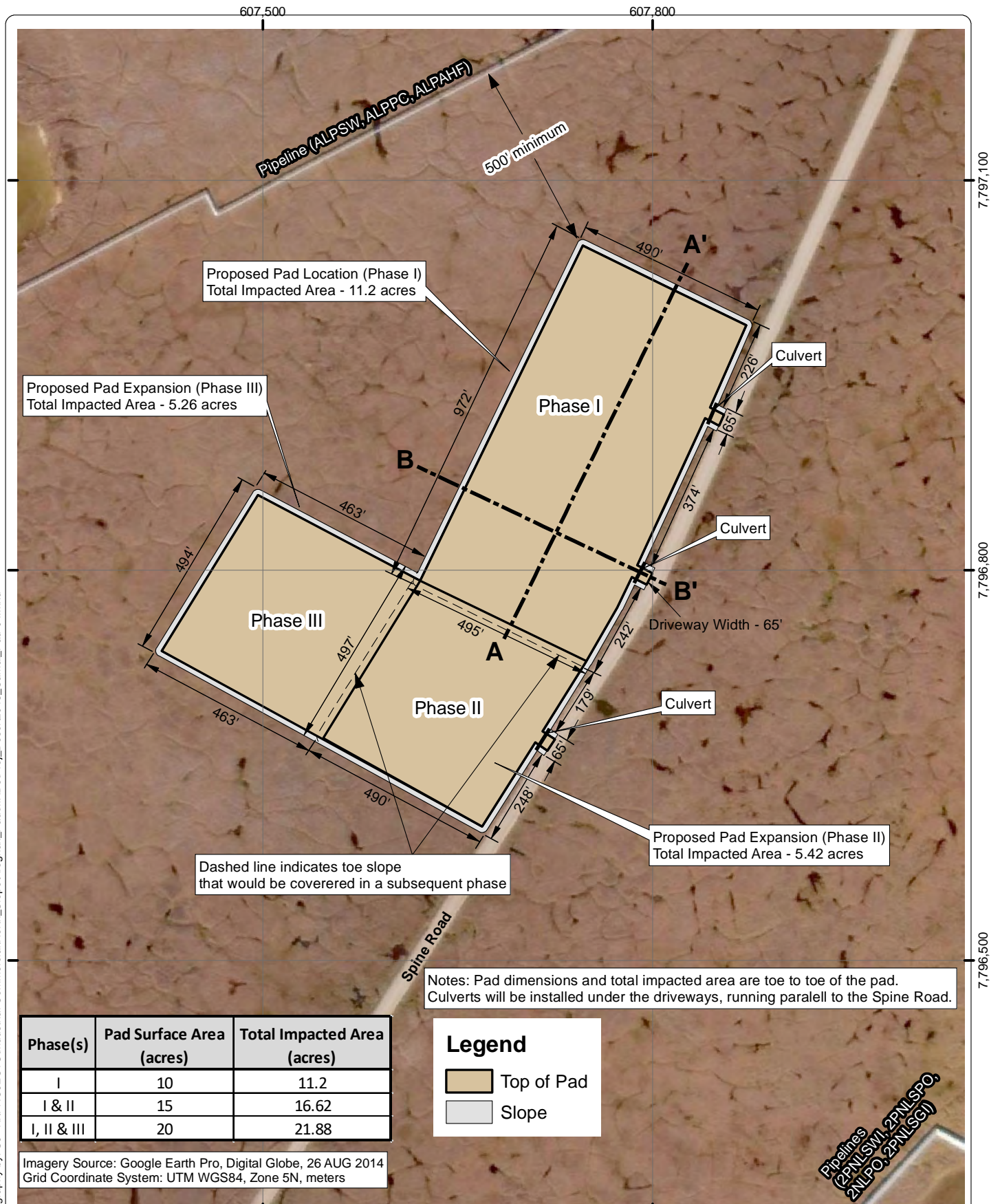
Lat.: 70.2557

Long.: -150.1408

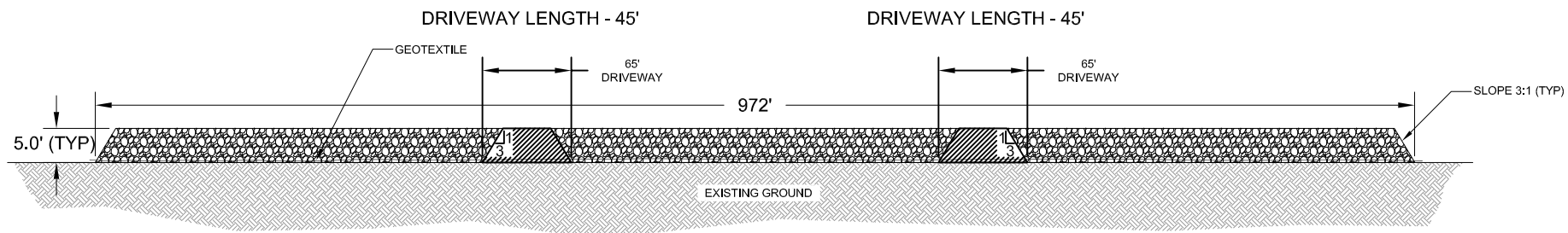
Sheet: 2 of 4

April 2025

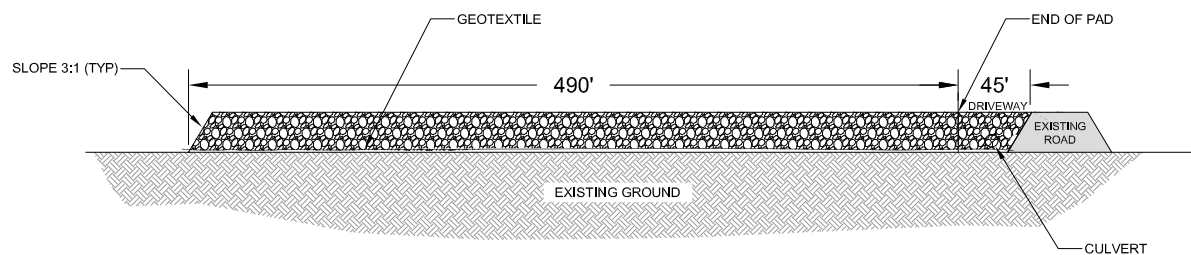
Date: 26 Dec 2018 Cartography by: SJ K:\PROJECTS\Industrial\Commercial\North_Slope\Afofnak_Pad\MXDs\Proj_Desc\2018_Camal_Pad-04.mxd



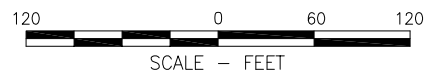
POA-2018-00302, Miluveach River
Afofnak Leasing, LLC.
Drawings dated December 27, 2018
Sheet 3 of 4



A - A'



B - B'



VERTICAL EXAGGERATION - 5x

DATE: 16 JUL 2018

PREPARED BY: S. Johnson

REVIEWED BY: M. Larson

PROJECT No:



AFOGNAK PAD CROSS-SECTIONS

POA-2018-00302, Miluveach River
Afognak Leasing, LLC.
Drawings dated December 27, 2018
Sheet 4 of 4