

ALASKA COURT SYSTEM (ACS)

SPECIFICATIONS AND INFORMAL QUOTATION

Procurement per ACS Procurement Guidelines 2-206

Property/Facility: 123 4th Street, Juneau, AK

Date of Solicitation: June 2, 2025

Date & Time Response Due: June 20, 2025 @ 12:00 PM

Type of Work: Construction

Location(s): Juneau, AK

Project #: JUN-C-25-0014

Contracting Agency: Alaska Court System
Facilities Department
820 W. 4th Avenue
Anchorage, AK 99501

ATTN: Anna Harrison, Director of Facilities

Phone: 907-264-8297

Fax: N/A

E-Mail Address: aharrison@akcourts.gov

The Alaska Court System is seeking quotes to procure and install security glazing at the Dimond Courthouse located at 123 4th Street, Juneau, AK 99801. The Alaska Court System is seeking to install security glazing on the basement level, first and 2nd floor windows.

A site visit may be scheduled at the discretion of the Project Manager, further details will be posted to Online Public Notices prior to the site visit date.

If Contractors are unable to attend the non-mandatory site visit, they may view the exterior of the facility at any time, but will not be granted interior access unless in attendance for the scheduled site visit.

An Alaska Business License and Certificate of Insurance will be required of the awarded contractor.

For all employees of the contractor working on site, a DPS Criminal History Report will be required prior to starting work.

RFQ response may be submitted via email or dropped off at the Snowden Administrative Building located at 820 W. 4th Ave., Anchorage, AK 99501

PART 1 – GENERAL

A. Submittals:

1. Itemized quote that clearly breaks down materials, labor, and any additional costs.

B. Delivery Information:

1. Lead time for materials and installation
2. Draft schedule to complete project which should include lead times, installation times, and any other relevant information related to schedule.

PART 2 – PRODUCTS

1. Procure and install security glazing as selected by ACS per the attached memo.

PART 3 – EXECUTION

- A. Vendor Installed per the attached memo.

ALASKA COURT SYSTEM (ACS)

SPECIFICATIONS AND INFORMAL QUOTATION

Procurement per ACS Procurement Guidelines 2-206

BID FORM

The following must be completed for quote to be responsive:

If this Quote is awarded, Contractor shall furnish all equipment, materials supplies and labor, in accordance with the above specifications, in a workmanlike manner, for the individual sums of:

BASE BID:

Furnish to project site directory and stock materials shown and specified:

Base Bid \$ _____
(figures)

_____ Dollars
(words)

The undersigned has read the foregoing Bid Schedule and hereby agrees to the conditions stated therein by affixing his signature below:

Contractor Name: _____ Contact Name: _____

Mailing Address: _____

Business License #: _____ EIN or SSN: _____

Phone: _____ Fax: _____ E-Mail: _____

Check one of the following to indicate type of business entity for your company:

Sole Proprietor: _____ Partnership: _____ Corporation: _____ Other (Specify): _____

SIGN HERE:

Contractors Authorized Signature

Title

Date

END OF SECTION

June 2, 2025



Stantec Architecture Inc.
3900 C Street, Suite 902
Anchorage AK 99503-5938

Anna Harrison, Director of Facilities
Alaska Court System
825 W4th Ave
Anchorage, AK 99501

Reference: Dimond Courthouse, Juneau: Window Film Installation

Scope of work includes installing Sun Control/Safety and Security Window Film at selected locations basement, first, and second floor windows at Dimond Courthouse, located at 123 4th Street, Juneau AK 99801.

Floors three, four and five are not included in the scope of work.

Refer to red-line on Figure 1, 2, and 3 for approximate extent of scope. Supplier/Installer shall verify all dimensions.

The film shall be installed for the full extension of glazing per Manufacturer's installation requirements.

Basis of design 3M Scotchshield Safety & Security Window Film 25. Warranty shall include Glass Thermal Shock Failure (Breakage) within 60 months of film installation date.

Window Film Specifications attached.

Regards,

Stantec Architecture Inc.

A handwritten signature in blue ink, appearing to read "Giovanna Gambardella", written over a thin red horizontal line.

Giovanna Gambardella
Architectural Leader
Phone: (907) 343-5282
giovanna.gambardella@stantec.com

Attachment:

Figure1, 2, 3; Reference Photos; Window Film Specifications; Basis of Design Sample Warranty

Reference: Dimond Courthouse, Juneau: Window Film Procurement

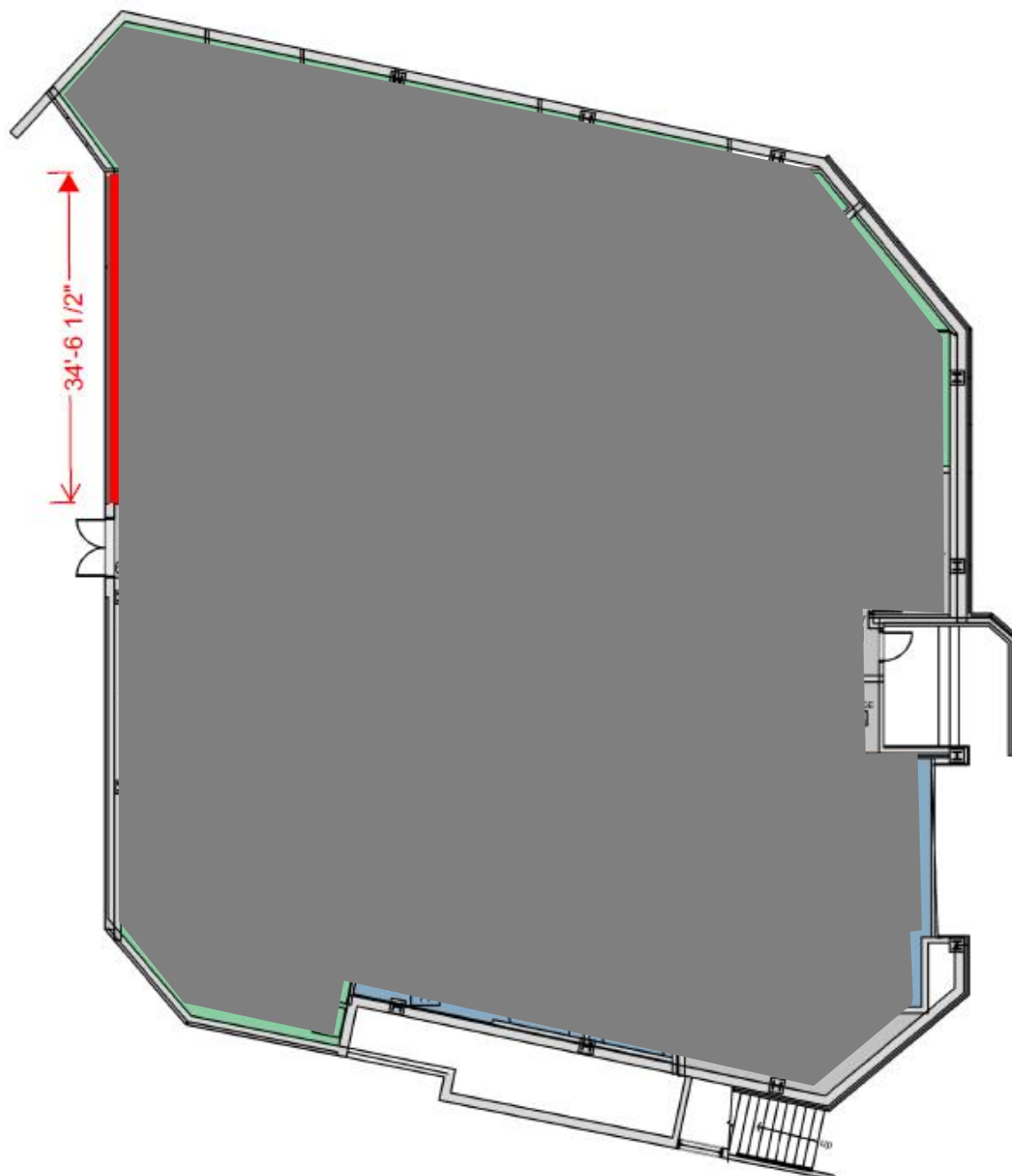


Figure 1- Basement - Red line indicates approximate extent of window film scope. Supplier/Installer to verify all dimensions.

Reference: Dimond Courthouse, Juneau: Window Film Procurement

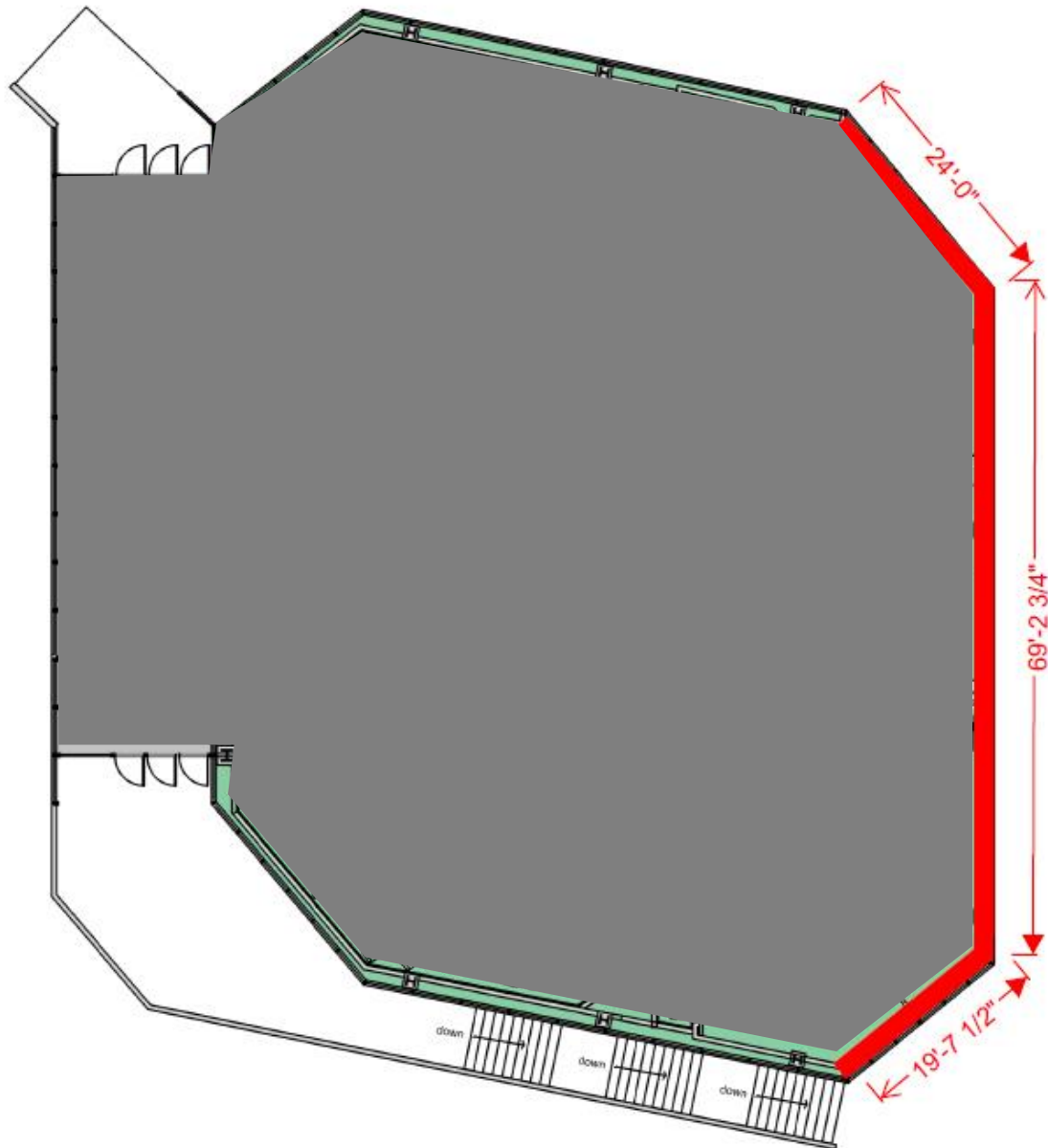


Figure 2- 1st Floor - Red line indicates approximate extent of window film scope. Supplier/Installer to verify all dimensions.

Reference: Dimond Courthouse, Juneau: Window Film Procurement

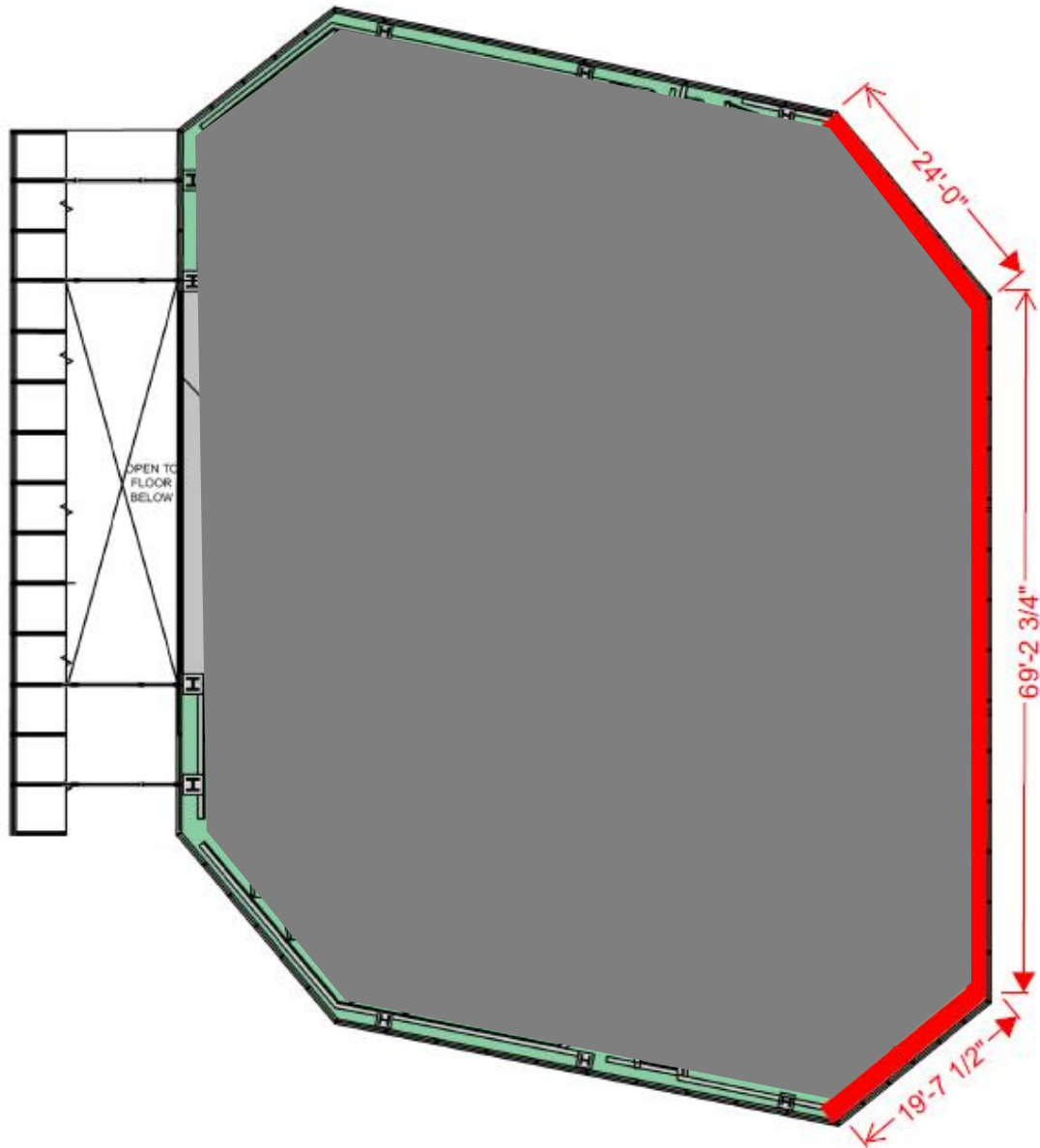


Figure 3- 2nd Floor - Red line indicates approximate extent of window film scope. Supplier/Installer to verify all dimensions.

Reference: Dimond Courthouse, Juneau: Window Film Procurement

Reference Photos



Reference: Dimond Courthouse, Juneau: Window Film Procurement



SECTION 08 87 00

WINDOW FILM

PART 1 GENERAL

1.1 SECTION INCLUDES

- A. Sun Control/Safety and Security Window Film:
 - 1. Ultra Night vision metallized film.

1.2 REFERENCES

- A. ANSI Z97.1 - American National Standard for Safety Glazing Materials Used in Buildings - Safety Performance Specifications and Methods of Test.
- B. ASHRAE - American Society for Heating, Refrigeration, and Air Conditioning Engineers; Handbook of Fundamentals.
- C. ASTM International (ASTM):
 - 1. ASTM D 882 - Standard Test Method for Tensile Properties of Thin Plastic Sheeting.
 - 2. ASTM D 1004 - Standard Test Method for Tear Resistance (Graves Tear) of Plastic Film and Sheeting.
 - 3. ASTM D 1044 - Standard Method of Test for Resistance of Transparent Plastics to Surface Abrasion (Taber Abrader Test).
 - 4. ASTM D 2582 - Standard Test Method for Puncture-Propagation Tear Resistance of Plastic Film and Thin Sheeting.
 - 5. ASTM D 4830 - Standard Test Methods for Characterizing Thermoplastic Fabrics Used in Roofing and Waterproofing.
 - 6. ASTM E 84 - Standard Method of Test for Surface Burning Characteristics of Building Materials.
 - 7. ASTM E 308 - Standard Recommended Practice for Spectrophotometry and Description of Color in CIE 1931 System.
 - 8. ASTM E 903 - Standard Methods of Test for Solar Absorbance, Reflectance and Transmittance of Materials Using Integrating Spheres.
 - 9. ASTM E 1886 - Standard Test Method for Performance of Exterior Windows, Curtain Walls, Doors, and Impact Protective Systems Impacted by Missile(s) and Exposed to Cyclic Pressure Differentials.
 - 10. ASTM E 1996 - Standard Specification for Performance of Exterior Windows, Curtain Walls, Doors and Impact Protective Systems Impacted by Windborne Debris in Hurricanes.
 - 11. ASTM F1642 - Standard Method of Test for Glazing and Glazing Systems Subject to Airblast Loadings
 - 12. ASTM F2912 - Standard Specification for Glazing and Glazing Systems Subject to Airblast Loadings.
- D. Consumer Products Safety Commission 16 CFR, Part 1201 - Safety Standard for Architectural Glazing Materials.
- E. GSA-TS01 - Standard Test for Glazing and Glazing Systems Subject to Airblast Loadings.

- F. Window 6.3 - A Computer Tool for Analyzing Window Thermal Performance; Lawrence Berkeley Laboratory.

1.3 PERFORMANCE REQUIREMENTS

- A. Safety Glazing Impact Performance:
 - 1. 400 ft-lbs impact resistance, meeting ANSI Z97.1 (Class A, Unlimited) and 16 CFR 1201 (Category 2) impact requirements with film applied on 1/4 inch annealed glass.
- B. Blast Hazard Mitigation Performance:
 - 1. GSA Rating of "2" / ASTM F1642 "No Hazard" with target blast pressure of 6 psi and 42 psi*msec blast impulse, on 1/4 inch annealed single pane glass and 3M Impact Protection Attachment Sealant.
 - 2. GSA Rating of "2" / ASTM F1642 "No Hazard" with target blast pressure of 6 psi and 42 psi*msec blast impulse, on 1/4 inch tempered single pane glass with 3M Impact Protection Attachment Sealant.
 - 3. GSA Rating of "2" / ASTM F1642 "No Hazard" with target blast pressure of 6 psi and 42 psi*msec blast impulse, on 1 inch annealed double pane glass with 3M Impact Protection Attachment Sealant.
- C. Impact Resistance and Pressure Cycling:
 - 1. ASTM E1996 / E1886: Small Missile "A", plus or minus 60 psf Design Pressure.
- D. Tear Resistance:
 - 1. Minimum Graves Area Tear Strength of 1,050 lbs percent as measured on coated film product, without liner, per ASTM D1004.
- E. Adhesion to Glass:
 - 1. Minimum 4 lbs/in peel strength per ASTM D3330 (Method A).
- F. Flammability: Surface burning characteristics when tested in accordance ASTM E 84, demonstrating film applied to glass rated Class A for Interior Use:
 - 1. Flame Spread Index: no greater than 25.
 - 2. Smoke Developed Index: no greater than 55.
- G. Abrasion Resistance:
 - 1. Film shall have a surface coating that is resistant to abrasion such that a nominal 3 percent increase of transmitted light haze will result when tested in accordance to ASTM D 1044 using 100 cycles, 500 grams weight, and the CS10F Calibrase Wheel.
- H. UV Light Rejection:
 - 1. Minimum of 99 percent UV light rejection (300 - 380 nm), per ASTM E903, as determined with film applied on 1/4 inch clear glass.

1.4 SUBMITTALS

- A. Product Data: Manufacturer's current technical literature on each product to be used, including:
 - 1. Manufacturer's Data Sheets.
 - 2. Preparation instructions and recommendations.
 - 3. Storage and handling requirements and recommendations.
 - 4. Installation methods.
- B. Verification Samples: For each film specified, two samples representing actual film color and pattern.
- C. Performance Submittals: Provide laboratory data of emissivity and calculated window

U-Factors for various outdoor temperatures based upon established calculation procedure defined by the ASHRAE Handbook of Fundamentals, Chapter 29, or Lawrence Berkeley Laboratory Window 5.2 Computer Program.

1.5 DELIVERY, STORAGE, AND HANDLING

- A. Follow Manufacturer's instructions for storage and handling.
- B. Store products in manufacturer's unopened packaging until ready for installation.
- C. Store and dispose of hazardous materials, and materials contaminated by hazardous materials, in accordance with requirements of local authorities having jurisdiction.

1.6 PROJECT CONDITIONS

- A. Maintain environmental conditions (temperature, humidity, and ventilation) within limits recommended by manufacturer for optimum results. Do not install products under environmental conditions outside manufacturer's recommended limits.

1.7 WARRANTY

- A. At project closeout, provide to Owner or Owners Representative an executed current copy of the manufacturer's standard limited warranty against manufacturing defect, outlining its terms, conditions, and exclusions from coverage.
- B. In order to validate warranty, installation must be performed by an Authorized 3M dealer and according to Manufacturer's installation instructions. Verification of Authorized 3M dealer can be confirmed by submission of active 3M dealer code number.

PART 2 PRODUCTS

2.1 MANUFACTURERS

- A. Basis of Design Manufacturer: 3M Commercial Solutions, Ultra Night Vision 25
- B. Substitutions: Approved Equal.

2.2 3M ULTRA NIGHT VISION SUN CONTROL FILM

- A. Product: 3M Scotchshield Safety and Security Window Film Ultra Series.
 - 1. Performance:
 - a. Breaking and Entering Testing: EN 356.
 - b. Safety Glazing Testing: ANSI Z97.1, EN 12600, and 16 CFR CPSC 1201.
 - c. Bomb Blast and Explosion Protection Testing: ASTM F1642, GSA TS01-2003.
 - 2. Physical Properties:
 - a. Film Type: Ultra Night Vision 25.
 - b. Film Thickness: 8 mil (0.22 mm)
 - c. Construction: Micro-layered
 - d. Tear Resistance: 1,100 lbs
 - e. Tensile Strength: 27,000 psi (186 mPa)
 - f. Break Strength: 215 lbs/in (956 N/25 mm)
 - g. Elongation at Break: 95 percent.
 - h. Peel Strength: Greater than 4 lbs/inch (18 N/25 mm)
 - i. Abrasion Resistance: 3 percent.

PART 3 EXECUTION

3.1 EXAMINATION

A. Film Examination:

1. If preparation of glass surfaces is the responsibility of another installer, notify Architect in writing of deviations from manufacturer's recommended installation tolerances and conditions.
 - a. Glass surfaces receiving new film should first be examined to verify that they are free from defects and imperfections, which will affect the final appearance.
2. Do not proceed with installation until glass surfaces have been properly prepared and deviations from manufacturer's recommended tolerances are corrected. Prepare surfaces using the methods recommended by the manufacturer for achieving the best result under the project conditions.
3. Commencement of installation constitutes acceptance of conditions.

B. Impact Protection Attachment Sealant Examination:

1. If application of window film is/was the responsibility of another installer, notification in writing shall be made of deviations from manufacturer's recommended installation tolerances and conditions.
2. Filmed glass surfaces receiving new attachment should first be examined to verify that they are free from defects and imperfections, and that the film edges extend sufficiently to the frame edges.
3. Do not proceed with installation until film and frame surfaces have been properly prepared and deviations from manufacturer's recommended tolerances are corrected. Prepare surfaces using the methods recommended by the manufacturer for achieving the best result under the project conditions.
4. Upon the customer's request, an adhesion test to the frame surface may be conducted by applying a 4 - 6 inch long bead, approximately 0.5 - 1 inch in width, masking one side of the frame surface underneath the strip with tape. Allow the Impact Protection Adhesive to cure for 7 days and test adhesion by pulling up on the masked end and a 90 degree angle. If cohesive failure is observed (adhesive residue left behind on the frame surface), adhesion is acceptable; if adhesive failure is observed (clean peel from the frame), adhesion is unacceptable and product is not recommended.

3.2 PREPARATION

- A. Clean surfaces thoroughly prior to installation.
- B. Prepare surfaces using the methods recommended by the manufacturer for achieving the best result for the substrate under the project conditions.
- C. Refer to Manufacturer's installation instructions for methods of preparation for Impact Protection Adhesive or Impact Protection Profile film attachment systems.

3.3 INSTALLATION

A. Film Installation, General:

1. Install in accordance with manufacturer's instructions.
2. Cut film edges neatly and square at a uniform distance of 1/8 inch (3 mm) to 1/16 inch (1.5 mm) of window sealant. Use new blade tips after 3 to 4 cuts.
3. Spray the slip solution, composed of one capful of baby shampoo or dishwashing liquid to 1 gallon of water, on window glass and adhesive to facilitate proper positioning of film.
4. Apply film to glass and lightly spray film with slip solution.
5. Squeegee from top to bottom of window. Spray slip solution to film and squeegee a second time.
6. Bump film edge with lint-free towel wrapped around edge of a 5-way tool.

7. Upon completion of film application, allow 30 days for moisture from film installation to dry thoroughly, and to allow film to dry flat with no moisture dimples when viewed under normal viewing conditions.
8. If completing an exterior application, check with the manufacturer as to whether edge sealing is required.

B. Impact Protection Attachment Sealant Installation:

1. The film attachment system shall be applied according to the specifications of the Manufacturer by an Authorized Dealer/Applicator. Refer to 3M publication, 70-0709-0322-7, 3M Impact Protection Adhesive Attachment System Installation Instructions.
 - a. For blast mitigation: minimum 1/2 inch bead overlap on both frame and film (excluding glazing stops or compression gaskets).
 - b. For windborne debris protection: minimum 3/8 inch bead overlap on both frame and film (excluding glazing stops or compression gaskets).
2. To ensure a straight and consistent bead width is achieved, masking tape may be applied to film and frame surfaces prior to application.
3. With prior approval of the building owner or property manager, existing compression gaskets may be partially removed or trimmed to allow for a thinner bead and stronger anchorage. If removing the gaskets, sections shall be trimmed approximately 3 inches in length and inserted with appropriate spacing along all sides of the window to help secure the glazing during application and curing of the Impact Protection Adhesive.
4. The Impact Protection Adhesive shall be dispensed with a caulk gun with nozzle opening diameter sized to match the approximate size of the desired bead width.
5. A plastic putty knife or other tool with a clean straight edge shall be used to trowel and smooth out the adhesive. The completed adhesive bead shall be relatively triangular in shape.
6. Any masking tape used shall be carefully removed within 10 minutes after applying the wet glaze.

3.4 CLEANING AND PROTECTION

- A. Remove left over material and debris from Work area. Use necessary means to protect film before, during, and after installation.
- B. Touch-up, repair or replace damaged products before Substantial Completion.
- C. After application of film, wash film using common window cleaning solutions, including ammonia solutions, 30 days after application. Do not use abrasive type cleaning agents and bristle brushes to avoid scratching film. Use synthetic sponges or soft cloths.

END OF SECTION

Warranty Overview

The following warranties are offered by 3M and its 3M Authorized Window Film Dealer (“**Seller**”) to a Purchaser that buys the following 3M window film products from that 3M Authorized Window Film Dealers for flat glass applications (collectively “**3M Window Films**”), and 3M™ Impact Protection Attachment (IPA) Sealant (“**3M IPA**”), subject to the terms and conditions set forth in this Warranty Bulletin. The highlights include:

- **3M™ Basic Product Warranty.** Subject to the terms and conditions set forth in this Warranty Bulletin, 3M warrants that the 3M Window Films and 3M IPA conform to the applicable 3M Specifications as of the date of manufacture.
- **Glass Thermal Shock Failure (Breakage) Warranty – Sun Control Films Only.** Subject to the terms and conditions set forth in this Warranty Bulletin, Seller warrants that 3M Window Films with sun control Specifications will not exhibit thermal shock failure for sixty (60) months from the date of installation.
- **3M™ Performance Warranty Coverage.** Subject to the terms and conditions set forth in this Warranty Bulletin, for installed 3M Window Film applications (and 3M IPA, if applied) (“**Installed Window Film Application(s)**”), Seller warrants that the Installed Window Film Application will maintain the adhesion and optical performance properties for the warranty periods and applications listed below.

WARRANTY MATRIX	Potential Applications ²	IPA 4 Sides ³	Basic Warranty	Glass Breakage Warranty	Residential		Commercial	
					Performance Warranty Period/Remedy from Installation Date		Performance Warranty Period/Remedy from Installation Date	
					Replace Product	Labor Costs	Replace Product	Labor Costs
3M™Scotchshield™ Safety & Security Window Films¹								
Ultra S800	<ul style="list-style-type: none"> •Spontaneous Glass Breakage •Break and Entry •Seismic Events •Explosions •Windstorm •Safety Glazing •UV Fading 	Yes	✓	Yes	Lifetime	Lifetime	12 Years	12 Years
Ultra Prestige S70		Yes	✓	Yes	Lifetime	Lifetime	15 Years	15 Years
Ultra Prestige S50		Yes	✓	Yes	Lifetime	Lifetime	15 Years	15 Years
Ultra Night Vision S25		Yes	✓	Yes	Lifetime	Lifetime	12 Years	12 Years
3M™Scotchshield™ Security Window Films¹								
S2400	Same applications listed above, except windstorm limited to impact protection from debris	Yes	✓	Yes	Lifetime	Lifetime	10 years	10 years
3M™ Safety & Security Window Films								
Safety S40	<ul style="list-style-type: none"> •Spontaneous Glass Breakage •Break and Entry •Seismic Events •Safety Glazing •UV Fading 	Yes	✓	Yes	Lifetime	Lifetime	10 years	10 Years
Safety S70		Yes	✓	Yes	Lifetime	Lifetime	10 Years	10 Years
Safety S80		Yes	✓	Yes	Lifetime	Lifetime	10 Years	10 Years
Safety S140		Yes	✓	Yes	Lifetime	Lifetime	10 Years	10 Years
Safety S40 Exterior (S40X)	<ul style="list-style-type: none"> •Spontaneous Glass Breakage •Seismic Events •Safety Glazing •UV Fading 	No	✓	N/A	7 Years (5 sloped)	1 Year	7 Years (5 sloped)	1 Year
Safety S70 Exterior (S70X)		No	✓	N/A	7 Years (5 sloped)	1 Year	7 Years (5 sloped)	1 Year
3M™ Anti-Graffiti Films								
Anti-Graffiti 4 (AG-4)	Glass Protection	No	✓	N/A	1 Year	1 Year	1 Year	1 Year
Anti-Graffiti 6 (AG-6)		No	✓	N/A	1 Year	1 Year	1 Year	1 Year
Attachment Sealant			✓					
3M™Impact Protection Attachment (IPA) Sealant	Window Film Installation	N/A	✓	N/A	Lifetime	Lifetime	= film warranty	= film warranty

¹ For warranty coverage, 3M™Scotchshield™ Safety & Security Window Films and 3M™ Scotchshield™ Security Window Film S2400 must be installed with the 3M IPA for the following applications: all windstorm, break & entry, and explosion mitigation applications and for all spontaneous glass breakage applications on single pane tempered glass. The sealant is recommended for certain other spontaneous glass breakage, safety glazing, and seismic applications. Always consult with your 3M Authorized Window Film Dealer for appropriate sealant guidance.

² Always refer to the 3M Technical Data Sheet and 3M Specifications for complete details on the scope of use for these listed applications. Users are responsible for determining if the film is suitable for the intended application.

³ For warranty coverage, 3M IPA is required on all four (4) sides of a glass window or door.

⁴ “Lifetime” is the time that the original Purchaser owns and occupies a residence. Warranty does not transfer to new owners or cover rental properties.

IMPORTANT: This Warranty Matrix and Overview is provided as a customer courtesy and must be read in conjunction with all applicable 3M terms and conditions, including as set forth in this bulletin. Please refer to the remainder of this Warranty Bulletin for detailed information on warranty coverage. Capitalized terms are defined in the Definitions section of this bulletin.

3M™ Basic Product Warranty - Film and 3M IPA Attachment

Subject to the terms and conditions set forth in this Warranty Bulletin, 3M warrants that 3M Window Films and 3M IPA conform to the applicable 3M manufacturing specifications ("**3M Specifications**") on the date of manufacture ("**Basic Product Warranty**").

Glass Thermal Shock Failure (Breakage) Warranty – Sun Control Films Only

Subject to the terms and conditions set forth in this Warranty Bulletin, for 3M Window Films identified as sun control films, Seller warrants against thermal shock failure (breakage) on glass windows and glass doors to which such sun control films have been appropriately applied (maximum value of \$500 per window) provided such glass failure is caused only as a direct result of the application of such sun control film, such films are applied only to recommended types of glass, and the glass failure is reported to the Seller within sixty (60) months from the Installation Date. Warranty coverage is valid only for 3M Window Films identified as "solar control films" and for 3M Safety & Security Window Films. Any glass failure covered by this warranty must be reviewed by Seller prior to repair, and only covers film and glass replacement. Refer to the Warranty Matrix for details on warranty coverage, applicable Warranty Periods, and requirements for warranty coverage based on the use of 3M IPA and the application of 3M IPA to 2 or 4 sides of a glass frame.

3M™ Performance Warranty

Subject to the terms and conditions set forth in this Warranty Bulletin, Seller warrants that 3M Window Films and 3M IPA (if applicable), when installed by a 3M Authorized Window Film Dealer, will meet the 3M Basic Product Warranty and, during the Performance Warranty Period, the Installed Window Film Application will meet the following adhesion and optical performance properties: 1) The 3M Window Film will adhere to the glass surface without blistering, cracking, peeling, bubbling, lifting, curling, or delaminating from the glass surface; 2) The 3M Window Film will maintain its optical clarity and color without discoloration, excessive fading, or loss of reflectivity (if applicable) that make the Installed Window Film Application visually unsuitable for its intended purpose when viewed from the inside with a viewing angle of up to 45 degrees from perpendicular to the vertical glass surface and from a distance of 10 feet from the surface, taking into account normal wear and tear; and 3) the 3M IPA, if applied, will maintain its adhesive properties without cracking, peeling, or delaminating from the glass. Refer to the Warranty Matrix for details on warranty coverage, applicable Warranty Periods, and requirements for warranty coverage based on the use of 3M IPA and the application of 3M IPA to 2 or 4 sides of a glass frame.

Window Film/3M IPA Removal and Residue Warranty

Subject to the terms and conditions set forth in this Warranty Bulletin, Seller warrants that the 3M Window Films are removable provided, however, Purchaser is advised that adhesive residue is expected after film removal. 3M does not warrant against adhesive residue. 3M does not warrant that 3M IPA is easily removable and grinding methods may be required to remove the 3M IPA. Removal of either 3M Window Films and/or 3M IPA by a 3M Authorized Window Film Dealer is recommended to achieve the best results. This warranty does not cover ease or speed of removal.

Warranty Exclusions and Limitations

The warranties described above have those warranty exclusions, limitations, and other terms and conditions set forth in this Warranty Bulletin.

Remedies for Non-Conforming 3M Products

If the 3M Window Films and/or 3M IPA do not conform to the applicable warranties, then the sole and exclusive remedy is, at Seller's option, for the Seller to (i) refund the Purchaser in an amount equivalent to the purchase price paid by the Purchaser for the Installed Window Film Application and/or (ii) replace the quantity of any non-conforming 3M Window Films and/or 3M IPA used in the Installed Window Film Application, with labor costs to replace the non-conforming product subject to the exclusions specified immediately below. 3M may require that samples of the non-conforming products be submitted to 3M to validate your warranty claim.

Exclusions

- The labor portion of this warranty only covers labor costs incurred by a 3M Authorized Window Film Dealer selected by 3M, at its sole discretion. Work performed by any other party is not eligible for warranty coverage.
- Certain costs that may be directly or indirectly associated with repair or replacement warranty work by a 3M Authorized Window Film Dealer are excluded from these remedies. Purchaser is solely responsible for all direct and indirect costs incurred by the Purchaser to enable the 3M Authorized Window Film Dealer to perform warranty work including, but not limited to, costs associated with the removal, reattachment, restoration (e.g., painting), moving, or replacement of personal or real property. Examples of such costs include but are not limited to the following: painting in the affected area; the removal, restoration, movement, or replacement of window treatments, window and door mullions, and trim work; and the removal, restoration, movement, or replacement of lighting fixtures, furniture, or other personal or real property.

General Warranty Terms and Conditions

The following terms and conditions apply to the purchase and installation of all 3M Window Films and 3M IPA and the warranties set forth in this Warranty Bulletin. In the event of a conflict between these terms and conditions and any 3M Window Film and/or 3M IPA bulletins, technical data sheets, instruction bulletins, or other 3M published documents (collectively referred to as "3M Product and

Instruction Bulletins"), the following terms and conditions shall govern.

A. Scope of Warranty

- This Warranty Bulletin supersedes and replaces all prior Warranty Bulletins or 3M Product and Instruction Bulletins with respect to the warranties set forth in this Warranty Bulletin.
- This Warranty Bulletin applies to 3M Window Films and 3M IPA sold globally unless different terms and conditions are published in writing by a local 3M entity outside the United States.
- The warranties and remedies described in this Warranty Bulletin are made only to Purchaser and do not obligate 3M to any other person or entity. These warranties do not transfer to subsequent owners or tenants of buildings to which the 3M Window Film and/or 3M IPA was applied.

B. Warranty Exclusions and Limitations

The following exclusions and limitations are in addition to those specific warranty exclusions referenced in this Warranty Bulletin or any individual 3M Window Film and/or 3M IPA Product or Instruction Bulletin.

- **Misuse.** 3M has no warranty obligations with respect to any 3M Window Film or 3M IPA that has been modified, damaged, or otherwise affected by misuse, abuse, accident, neglect, acts of God, vandalism, or mishandling by anyone other than 3M or the 3M Authorized Window Film Dealer.
- **Failure to Follow Product Care and Maintenance Guidelines.** All warranty coverage is contingent upon the installed 3M Window Film and/or 3M IPA being maintained in accordance with all Seller guidelines and instructions for care and maintenance including, but not limited to, the "Guidelines for 3M™ Window Film Inspections, Cleaning and Maintenance" found at the end of this Warranty Bulletin. Failure to follow such guidelines and instructions will void all 3M Window Film and 3M IPA warranties, if applicable. **DO NOT WASH newly installed windows for thirty (30) days to allow adhesion to build.**
- **Required 3M IPA Combinations.** For warranty coverage, 3M™Scotchshield Safety & Security Window Films and 3M™ Scotchshield™ Security Window Film S2400 must be installed with the 3M™ Impact Protection Attachment (IPA) Sealant for the following applications: all windstorm, break & entry, and blast mitigation applications and for all spontaneous glass breakage applications on single pane tempered glass. The sealant is recommended for certain other spontaneous glass breakage, safety glazing, and seismic applications. Always consult with your 3M Authorized Window Film Dealer for appropriate sealant guidance.
- **Applications to Non-Flat Glass Surfaces.** 3M Window Films are only designed for application to flat glass. Applications to other surfaces such as three-dimensional or curved glass surfaces voids warranty coverage. The use of sloped, flat glass shortens the warranty period. Please refer to the Warranty Matrix.
- **Spliced Film.** Purchasers may have certain flat glass applications in which the framing structure of the window or door may require the 3M Authorized Window Film Dealer to splice the 3M Window Film prior to application. Spliced 3M Window Film may not meet 3M Specifications and 3M does not warrant the performance of any 3M Window Films on flat glass applications with splices.
- **Use of Non-3M Products.** The substitution of non-3M products by Purchaser (film or attachment sealant) invalidates warranty coverage.
- **Abrasion Damage.** 3M does not warrant against damage to the surface of the installed 3M Window Film and/or 3M IPA caused by natural, manual, or mechanical forces including, but not limited to, pressure washing, the use of brushes, brushing from tree branches, and sandstorms.
- **Acid Rain/Acid Dew Related Failures.** 3M does not warrant against defects, failures, or losses caused by, arising from, or related to acid rain or acid dew on Installed 3M Film and 3M IPA.
- **Pre-Installation Inspections.** In certain instances, certain pre-installation inspections may be conducted by 3M and/or the 3M Authorized Window Film Dealer to document glazing conditions and other installation parameters. Completion of pre-installation inspection records, however, do not constitute a warranty or guarantee warranty coverage.
- **Performance Failures Due to Certain Acts of God.** Warranty coverage will be voided if the 3M Window Film is exposed to certain Acts of God including, but not limited to, movement of the building structure that impacts glazing, floods or exposure to high moisture environments not typical for a building structure, fire, windstorms that impact glazing, or similar occurrences which alter the physical properties of the 3M Window Film.
- **Removal of 3M Window Film and/or 3M IPA.** The warranties set forth in this Warranty Bulletin are voided upon removal of the 3M Window Film and/or 3M IPA for any reason other than replacement of product by a 3M Authorized Window Film Dealer for any product found not to conform to the warranties in this Warranty Bulletin.

C. Inspection, Cleaning and Maintenance

3M recommends that Purchaser inspect the Installed Window Film Application after installation and promptly notify the 3M Authorized Window Film Dealer if any installation concerns are observed. **IMPORTANT:** Installed Window Film Applications typically take thirty (30) days or longer to fully cure, i.e., for the liquid solution used in applying the 3M Window Film to fully evaporate. 3M recommends that Purchaser wait a minimum of ninety (90) days prior to reporting any adhesion or optical appearance issues to allow for a full cure. Curing periods vary depending on environmental conditions such as temperature, humidity, and sunlight exposure.

Refer to the Guidelines for Inspection, Cleaning, and Maintenance at the end of this Warranty Bulletin for important details.

D. Important Notices

IMPORTANT PRODUCT AND APPLICATION LIMITATIONS: Many factors can contribute to potential hazards and damages arising from wind, impact, seismic, explosion, or break and entry incidents, including the window film selected, type and thickness of glass, building construction, exterior pressure, proximity of impact occurrence, quality of window or door frames, intruder size and strength, and type of tools used to gain entry. Certain 3M™ Window Films require the use of 3M™ Impact Protection Attachment (IPA) Sealant on glass window and door frames for windstorm, break & entry, and explosion mitigation applications and for spontaneous glass breakage applications on single pane tempered glass. The sealant may also be recommended for certain other spontaneous glass breakage, safety glazing, and seismic applications. Always refer to the 3M Technical Data Sheets and 3M Technical Specifications to determine whether these combinations are required. **CAUTION: While 3M™ Window Films, when applied in accordance with 3M instructions, may help reduce the impact of flying glass shards under certain conditions and potentially delay intruders, these films do not prevent property damage, personal injury, or death. CAUTION: Window films are not bulletproof and not designed to stop intruders.** Always consult with security professionals and a 3M Authorized Window Film Dealer prior to selecting any window films to determine suitability for the intended application.

IMPORTANT STATE OF FLORIDA NOTICE: 3M Window Films are not approved in the State of Florida for use as hurricane, windstorm, or impact protection from wind-borne debris from a hurricane or windstorm. In compliance with Florida Statute 553.842, 3M Window Films may not be advertised, sold, offered, provided, distributed, or marketed in the State of Florida as hurricane, windstorm, or impact protection from wind-borne debris from a hurricane or windstorm.

E. Warranty Disclaimer

EXCEPT TO THE EXTENT PROHIBITED BY LAW, EACH WARRANTY IS MADE IN LIEU OF ALL OTHER WARRANTIES, RIGHTS, AND CONDITIONS, EXPRESS OR IMPLIED, INCLUDING, BUT NOT LIMITED TO, (A) ANY WARRANTY OR CONDITION OF MERCHANTABILITY, (B) ANY WARRANTY OR CONDITION OF FITNESS FOR A PARTICULAR PURPOSE, AND (C) ANY WARRANTY OR CONDITION ARISING OUT OF A COURSE OF DEALING, CUSTOM, OR USAGE OF TRADE. PURCHASER IS RESPONSIBLE FOR DETERMINING IF A PRODUCT FITS PURCHASER'S PARTICULAR PURPOSE AND IS SUITABLE FOR PURCHASER'S INTENDED APPLICATION. PURCHASER ACKNOWLEDGES THAT IT HAS NOT RELIED UPON ANY REPRESENTATION, CONDITION, OR WARRANTY MADE BY 3M, OR ANY OTHER PERSON ON 3M'S BEHALF, EXCEPT AS SPECIFICALLY PROVIDED HEREIN.

F. Limitation of Liability

Except for the limited remedy stated above, and except to the extent prohibited by law, 3M is NOT liable for any loss or damage arising from or related to the 3M product, whether direct, indirect, special, incidental, or consequential (including, but not limited to, lost profits or business opportunity), regardless of the legal or equitable theory asserted, including, but not limited to, warranty, contract, negligence, or strict liability.

G. 3M Product Related Information

All verbal and written statements, engineering/technical information, and other information or recommendations related to the 3M Window Film and 3M IPA or their use in connection with certain applications ("**Product Related Information**") provided by 3M to Purchaser are for Purchaser's convenience only and the accuracy or completeness thereof is NOT warranted. Such Product Related Information should be considered representative or typical only, should NOT be used by Purchaser for specification purposes, and is NOT part of the 3M Specifications. Purchaser must evaluate the 3M Window Films and/or 3M IPA to determine if it is suitable for Purchaser's intended application.

H. Authority

No 3M employee or any employee of a 3M Authorized Window Film Dealer is authorized to make any representation, warranty, or condition that differs from or is in addition to the representations, warranties, or conditions set forth in this Warranty Bulletin.

I. No Extension of Warranty

In the case of an approved warranty claim, the replacement 3M Film(s) and/or 3M IPA carries only the remaining term of the original 3M Film and 3M IPA Warranty Period.

J. Customer Courtesies

3M may elect to reimburse Purchaser for additional costs or offer remedies outside the scope of the warranty coverage described in this Warranty Bulletin, pursuant to 3M customer accommodations, but 3M is NOT legally obligated to offer such additional reimbursement or remedies. Such additional reimbursement and remedies are at the sole discretion of 3M and any such additional reimbursement and remedies shall in no manner waive or modify the warranty limitations as described in this Warranty Bulletin.

Definitions

- **"3M IPA"** is sold under the trademark "3M™ Impact Protection Attachment (IPA) Sealant" and is an attachment sealant used to help hold the film and glass within the frame system. 3M™ Safety & Security Window Films and 3M™ Scotchshield™ Security Window Film S2400 must be installed with the 3M™ Impact Protection Attachment (IPA) Sealant for all windstorm, break & entry, and explosion mitigation applications and for all spontaneous glass breakage applications on single pane tempered glass.
- **"3M Window Film(s)"** are defined as the portfolio of window films sold by the 3M Commercial Branding and Transportation Division under the "3M" trademark for use in flat glass applications including, but not limited to, 3M Safety & Security Window Films. 3M reserves the right to add or delete products from this portfolio of 3M Window Films at its sole discretion. If 3M discontinues any 3M Window Film, the remedy available to Purchaser for a non-conforming 3M Window Film will be limited to refund of the purchase price for the Installed Window Film Application.
- **"3M Specifications"** is an explicit set of written, 3M quality and manufacturing requirements and standards used in the production of 3M Window Films to document that the 3M Window Films and 3M IPA has been manufactured in accordance with these requirements and standards.
- **"Installed Window Film Application"** is defined as the installation of 3M Window Film and 3M IPA (if applicable) to glass windows and glass doors by a 3M Authorized Window Film Dealer.
- **"Purchaser"** refers to the customer purchasing 3M Window Films and 3M IPA (if applicable) from a 3M Authorized Window Film Dealer.
- **"Warranty Matrix"** refers to the warranty table on the first page of this Bulletin, which provides details regarding coverage availability, applicable Warranty Periods, and requirements for warranty coverage based on the use of 3M IPA and the application of 3M IPA to 2 or 4 sides of a glass frame.
- **"Warranty Period"** is defined as the period of time during which 3M offers warranty coverage under the Performance Warranty. Refer to the Performance Warranty Periods described in the Warranty Matrix for individual 3M Window Films.

Warranty Claims Procedure

How to file a claim: Contact your 3M Authorized Window Film Dealer, who is authorized to submit warranty claims to 3M on your behalf. The dealer will discuss with you next steps including the warranty review and approval process, applicable warranty coverage and expected timing.

Samples. Note that for a warranty claim to be processed, images and samples of the 3M Window Film and/or 3M IPA may be requested to be sent directly to 3M for analysis. 3M and/or the 3M Authorized Window Film Dealer may request access to your property for purposes of collecting such samples. 3M and the 3M Authorized Window Film Dealer reserve the right to request additional samples and detailed information including, but not limited to, invoices related to the purchase and maintenance details. Failure to submit requested information may invalidate the warranty claim.

Additional Resources

For additional questions, visit 3M.com/windowfilm or contact your local 3M Authorized Window Film Dealer.

Attachment(s)

Guidelines for 3M™ Window Film Inspections, Cleaning and Maintenance

Commercial Branding and Transportation

3M Center, Building 223-3N-30 St. Paul, MN 55144
3M.com/windowfilm

© 3M 2024. All rights reserved.

3M and Scotchshield are trademarks of 3M. Used under license in Canada.
All other trademarks are the property of their respective owners.



Guidelines for 3M™ Window Film Inspections, Cleaning, and Maintenance

DO NOT WASH newly installed windows for 30 days after installation to allow adhesion to build.

The use of the following decal is recommended in conspicuous locations to serve as a reminder to not wash windows for the specified period. Consult your 3M Authorized Window Film Dealer for the recommended date to insert on this decal, which will vary based on several factors including, but not limited to, film type, interior or exterior application, and environmental conditions. Do not adhere decal to filmed glass.



Visual Inspection Guidelines for 3M Window Films

Flat glass with applied 3M Window Film is not expected to have the same visual quality as glass alone. Below are criteria for evaluating the applied window film.

When to View

3M recommends that Purchaser inspect the Installed Window Film Application after installation and promptly notify the 3M Authorized Window Film Dealer if any installation concerns are observed.

IMPORTANT: Since 3M Window Films are applied with a detergent and water solution, the Purchaser should allow enough time for the solution to dry out. While an initial indication of quality can be assessed a day after installation, there will still be water present under the film that can cause visual distortion. Installed Window Film Applications typically take thirty (30) days or longer to fully cure, i.e., for the liquid solution used in applying the 3M Window Film to fully evaporate. 3M recommends that Purchaser wait a minimum of ninety (90) days prior to reporting any adhesion or optical appearance issues to allow for a full cure. Curing periods vary depending on environmental conditions such as temperature, humidity, and sunlight exposure. Thicker films and films with a metallic layer can require substantially longer to completely dry. In addition, water bubbles can take more than thirty (30) days.

How to View

The glass and film should be viewed from a distance of 10 feet, at angles up to 45 degrees from either side of the glass. Natural daylight is best for viewing instead of bright, direct sunlight. Be sure that the inside and outside of the window surfaces are clean.

Visual Clarity

Note that visual clarity may vary depending on several factors. 3M Window Film installation should be performed only after all other construction trades have completed work. You should provide a clean and dust-free work area when the films are installed, paying attention to ventilation systems which may deposit contamination from other work areas. Good installation will minimize contamination so that it is not obtrusive to the viewer.

Examples (and sources) of visible defects are:

- Dirt, debris, hair, and fiber particles (contamination)
- Adhesive gels, film color variation (product)
- Fingerprints, air bubbles, scratches, tears, large gaps, and creases (application)

Some level of contamination near the edges of the film is difficult to avoid and can be expected. Some particles are acceptable where poor frame condition makes contamination unpreventable. Similarly, applications of exterior window films have numerous sources of uncontrolled debris and may require acceptance of lessened optical clarity.

Visible gaps between the film and the frame in applications in which 3M IPA has not been applied should be expected and are typically 1/32 to 1/16 inch (1-2mm). For thicker safety films, gaps may be as wide as 1/8 inch (3mm).

Splices

Customers may find film splices objectionable, but they are required when both dimensions of the glass are larger than the largest width available for the 3M Window Film. A butt splice is recommended for 3M Window Film instead of an overlap splice.

If splices are necessary for the application of non-3M Safety & Security Window Film, the splice may be located in a less visible area of the glass. If splices are necessary for the application of 3M™ Safety & Security Window Film, the splice should be in a location where impact is less likely (for example, up high for break & entry applications). Customers may find this strip objectionable and will need to determine the risk/benefit of not applying the strip.

3M IPA Applications. For installations in which 3M IPA is applied, customer should expect a large triangular bead between the edges of the glass and the glass frame. The 3M IPA sealant is hand-applied, similar to a caulk, and will have a non-uniform appearance.

General Cleaning and Maintenance Instructions

Failure to comply with the following cleaning and maintenance instructions could damage the 3M Window Film and/or reduce its performance properties. Damage caused to the 3M Window Film by you after installation is not covered under warranty.

Instructions

- To help prevent scratching of the 3M Window Film, do not use knives, scrapers, brushes, or any abrasive cleaners or cleaning materials on the window.
- Do not rub vigorously or apply heavy pressure to the filmed window.
- Do not affix tapes, suction cups, stickers, or other materials or objects to the film surface.
- Removal and replacement of window grids could cause damage and/or reduce the performance properties of the film.
- Use a different cleaning material for cleaning the frame/sills.
- Be sure to use separate cleaning materials and buckets for outside and inside windows.
- Caution is recommended around splice areas. Wipe along the splice, not across.
- Do not leave the film wet, but wipe it dry after cleaning.

Recommended Commercially Available Glass Cleaners

- Windex® Original Glass Cleaner or similar glass cleaner
- 3M™ Glass Cleaner Concentrate #1
- Iso-Propyl Alcohol diluted with water, 2:1 or Rubbing Alcohol
- Water with a few drops of dish soap

Recommended Cleaning Materials

- Non-abrasive, good quality, clean paper toweling. Low quality brown paper towels and newspaper are not recommended.
- Clean, soft cloth or microfiber cloth
- Clean, synthetic sponge or rubber cleaning squeegee

Commercial Branding and Transportation

3M Center, Building 223-3N-30 St. Paul, MN 55144
3M.com/windowfilm

© 3M 2024. All rights reserved.

3M and Scotchshield are trademarks of 3M. Used under license in Canada.
All other trademarks are the property of their respective owners.

