

ADDENDUM #7

Nesbett Courthouse Clerks Office Remodel Project No. ANC-C-25-0009

Date: April 18, 2025

To All Plan Holders:

The following changes, additions, clarifications, and/or deletions are hereby made a part of the Contract Documents for the above noted project, fully and completely as if the same were fully contained therein. All other terms, conditions, and specifications of the original Invitation to Bid remain unchanged.

This amendment must be acknowledged in the space provided on the Bid Schedule.

The Submittal Date and Time is UNCHANGED. It remains: April 25, 2025 at 12:00 PM

The modifications directed by this Addendum #7 are described on this page.

CHANGES TO ADDENDA

1. None.

Updated Sheets: None

Submitted Questions and Answers:

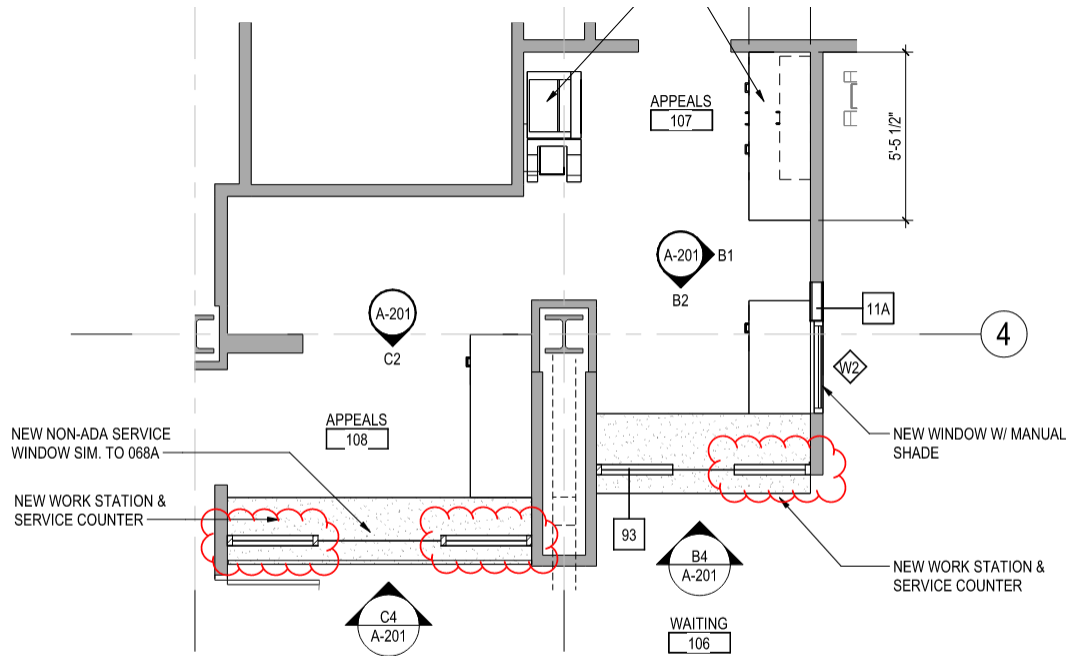
4/11/25 Questions from Isaac Taylor, Roger Hickel Construction

A-101 Keynotes – Demolition NO. 19 *“REMOVE, PROTECT, AND REINSTALL EXISTING FURNITURE & EQUIPMENT; COORD. WITH OWNER’S REP FOR STORAGE & REINSTALL INSTRUCTIONS”* Please clarify what specific furniture and equipment will be salvaged for reinstallation.

Response: Any existing furniture in areas noted. To be collected and stored in ACS warehouse on the Anchorage campus.

4/17/25 Questions from Isaac Taylor, Roger Hickel Construction

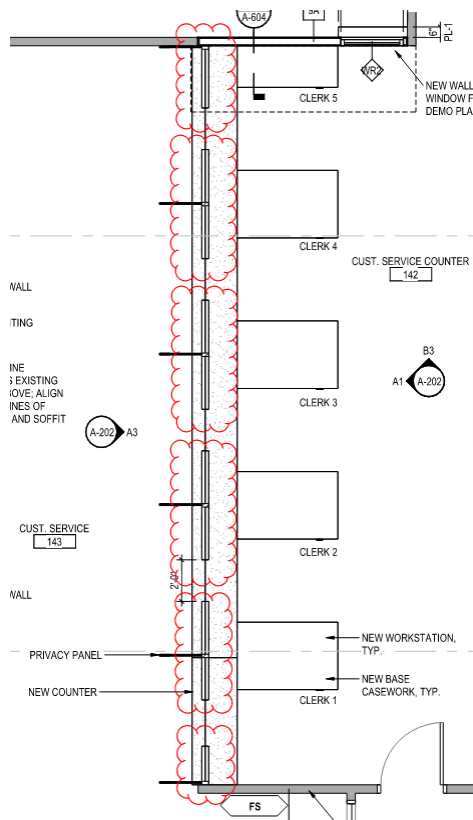
1. Drawing No. A-201, C1 Enlarged Plan – Appeals 107 & 108: For the new workstation and service counter, interior partition type 93 is called out once for the Appeals 107 service counter. Should contractors assume that partition type 93 also applies to the Appeals 108 service counter? See outline below:



C1 **ENLARGED PLAN - APPEALS 107 & 108**
 1/4" = 1'-0"

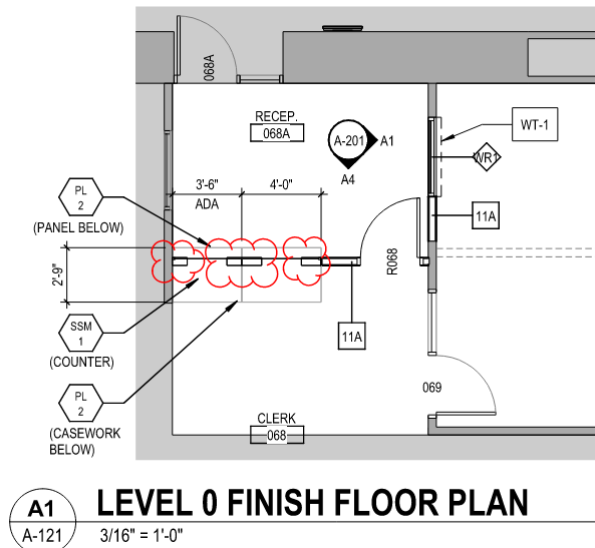
a.

2. Drawing No. A-202, B1 Enlarged Plan – Clerk Service Counter 142: No interior partition type is called out for the new counter. Should contractors assume that partition type 93 also applies to the Clerk service counter? See outline below:



a.

3. Drawing No. A-121, A1 Level 0 Finish Floor Plan – Reception 068A Counter: No interior partition type is called out for the new counter. Should contractors assume that partition type 93 also applies here? See outline below:



a.

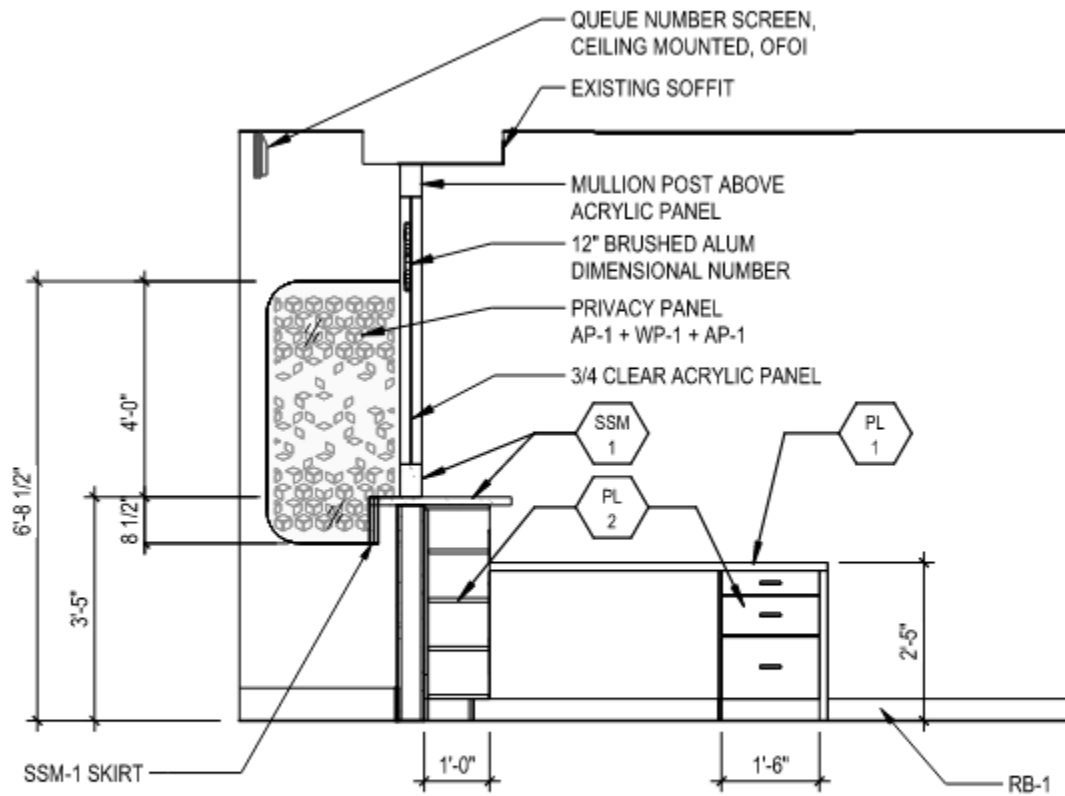
4. It would also be helpful to clarify the wall assembly requirements **above** the counters, not just below.
5. In other words, please provide a clear definition of the required wall assemblies for **all** new wall construction—from the finished floor elevation up to the ceiling. For example, some wall type callouts appear only at partial-height walls, such as at clerk or service counters, but the wall assembly above the counter or window areas is not clearly defined.

Response:

Above the clerk counters there is not partition, only a gypsum ceiling soffit. The partition below counter stops at the underside of the counter and is type 93. Above the counter are vertical support mullions between each station and a sill. The acrylic panel is supported by the mullions and the sill. Above the acrylic and below the gypsum ceiling soffit is open for air flow.

B3/A202 show the section view at the counter.

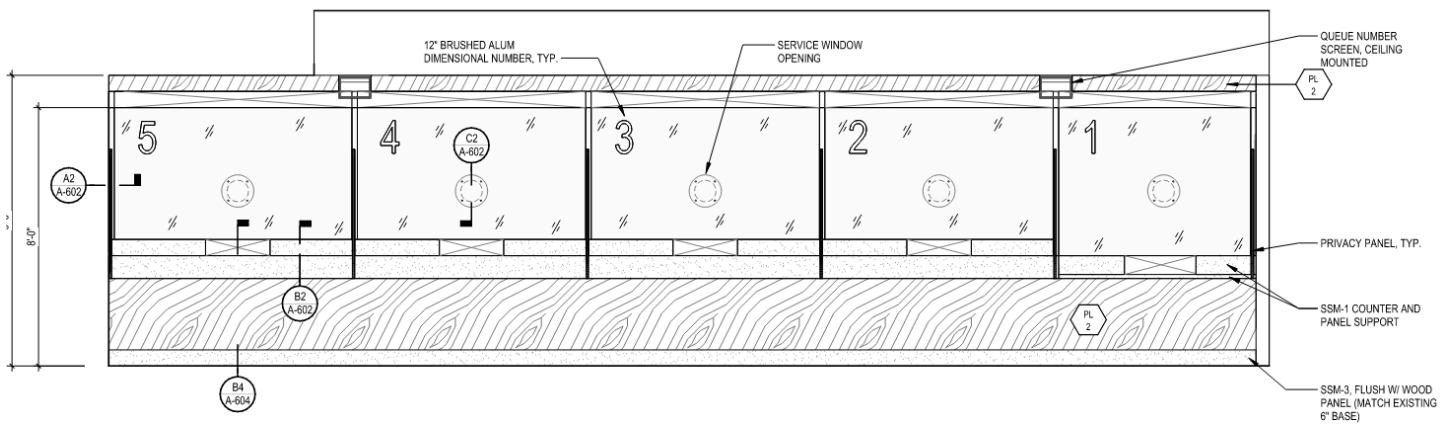
A2/A202 shows the elevation view of the counter from customer side.



B3
A-202

CUST. SERVICE COUNTER 142 NORTH

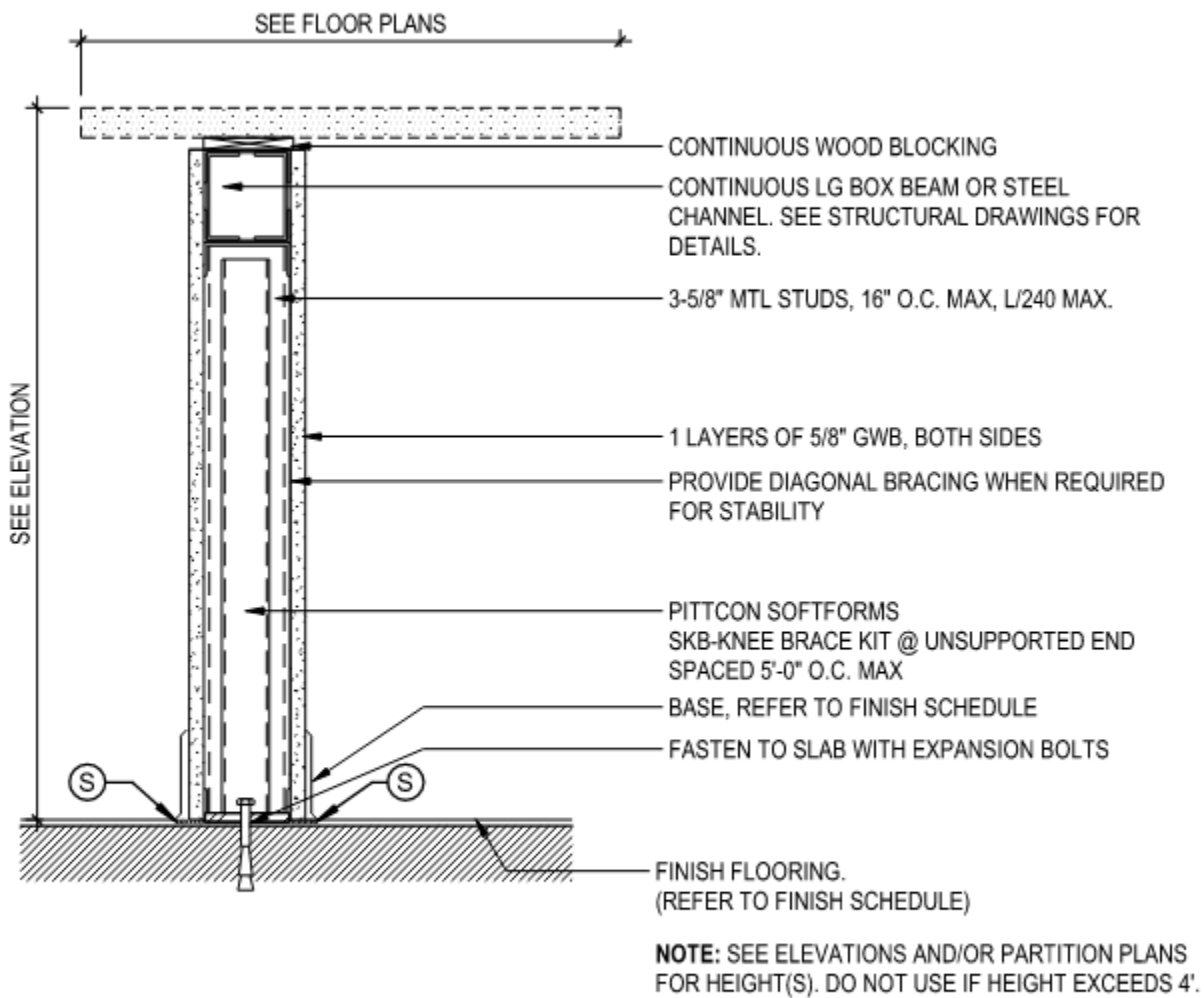
3/8" = 1'-0"



A3
A-202

INT ELEV - CUST. SERVICE PUBLIC 143 EAST

3/8" = 1'-0"



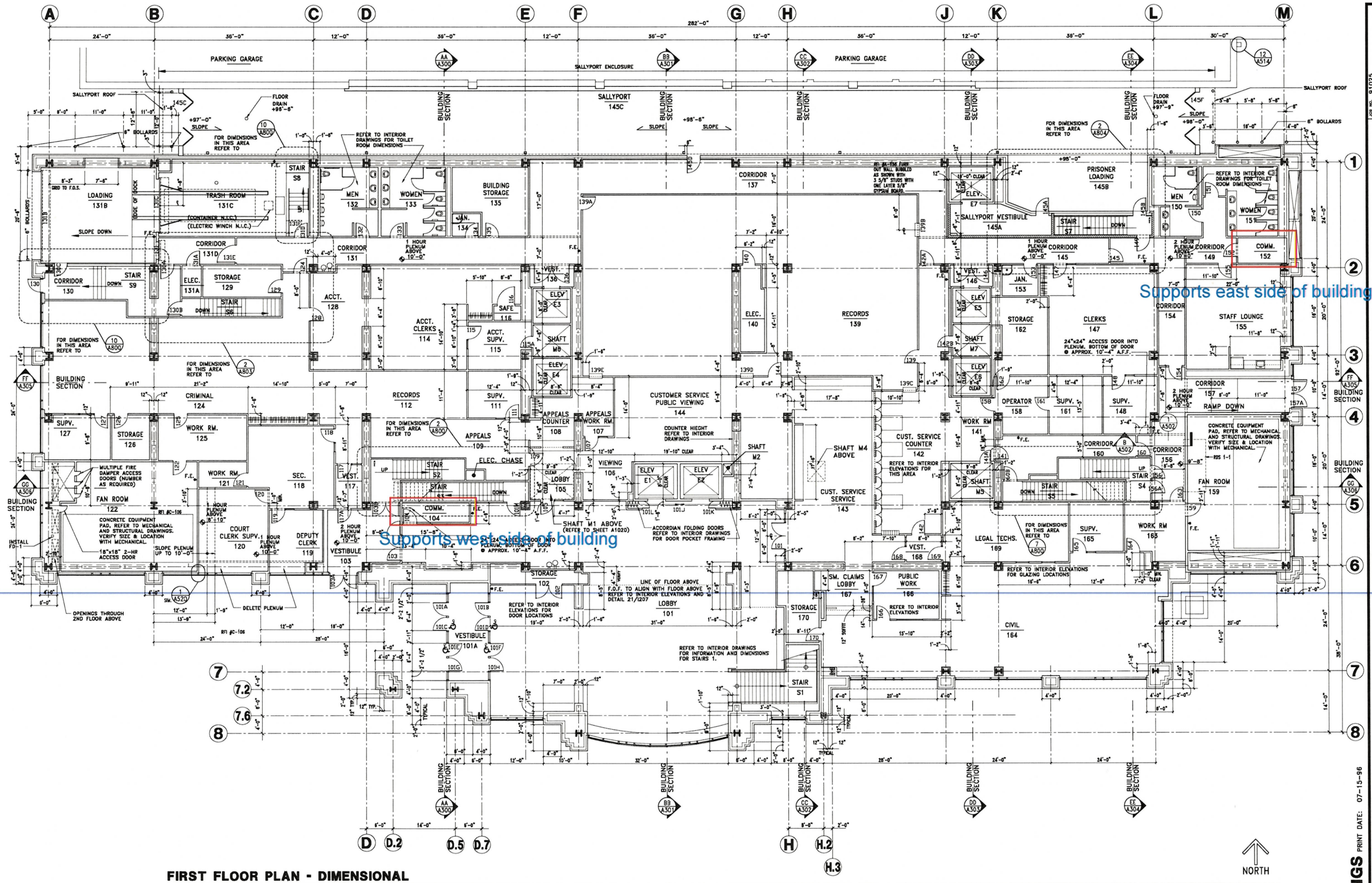
93	PARTIAL HEIGHT PARTITION W/ CAP	

4/18/25 - Question from Cayla Keene, Criterion General

Where are the Comm Closets

Response: See attached Nesbett As-Built – Sheet A101D

END OF ADDENDUM #7



FIRST FLOOR PLAN - DIMENSIONAL

LEGEND / NOTES

WALL LEGEND

- INDICATES CONCRETE STRUCTURE EXISTING BY PREVIOUS CONTRACT
- INDICATES 6" C.M.U.
- INDICATES 8" C.M.U. (LOW WALL)
- METAL STUD AND GWB ASSEMBLY. REFERENCE WALL TYPES

- 2-HOUR - STEEL DECK & CONCRETE HOLDING CELL LID REFERENCE HORIZONTAL ASSEMBLY "O" - SHEET A098
- INDICATES WALL TYPES, REFER TO SHEET A098
- F.E. FIRE EXTINGUISHER

PLENUM LEGEND

- GWB WITH PLENUM LINER CONSTRUCTION ABOVE CEILING REFERENCE HORIZONTAL ASSEMBLY "H" - SHEET A098
- 1 HR. SHAFTWALL CONSTRUCTION ABOVE CEILING REFERENCE HORIZONTAL ASSEMBLY "K" - SHEET A098
- 2 HOUR SHAFTWALL CONSTRUCTION ABOVE CEILING REFERENCE HORIZONTAL ASSEMBLY "L" - SHEET A098
- 10'-0" INDICATES ELEVATION AT BOTTOM SIDE OF PLENUM ABOVE FLOOR

NOTE:

- FOR ADDITIONAL INFORMATION REFER TO THE INTERIOR DRAWINGS (7"1" SHEETS). INCLUDES ENLARGED FLOOR PLANS, REFLECTED CEILING PLANS, INTERIOR ELEVATIONS, DETAILS AND FLOOR RECESSES.
- REFER TO INTERIOR DRAWINGS FOR ADDITIONAL DIMENSIONAL INFORMATION REGARDING TOILET ROOMS AND COURTROOMS.
- DIMENSIONS ARE TO FACE OF STUD, FURRING OR CMU, UNLESS OTHERWISE NOTED.

RECORD DRAWINGS

ANCHORAGE COURTHOUSE
4TH AVE. & I STREET, ANCHORAGE, AK
ALASKA COURT SYSTEM
FIRST FLOOR PLAN
DIMENSIONAL

A101D

PRINT DATE: 07-15-96

07-15-96

91025

CHECK: JEM

DATE: 01-03-94

EXTENSION: #1 01-28-94
#2 02-08-94

McCOOL CARLSON GREEN

ARCHITECTURE INTERIOR DESIGN SPACE PLANNING

901 W. 29TH AVENUE, ANCHORAGE, AK (907) 563-6474