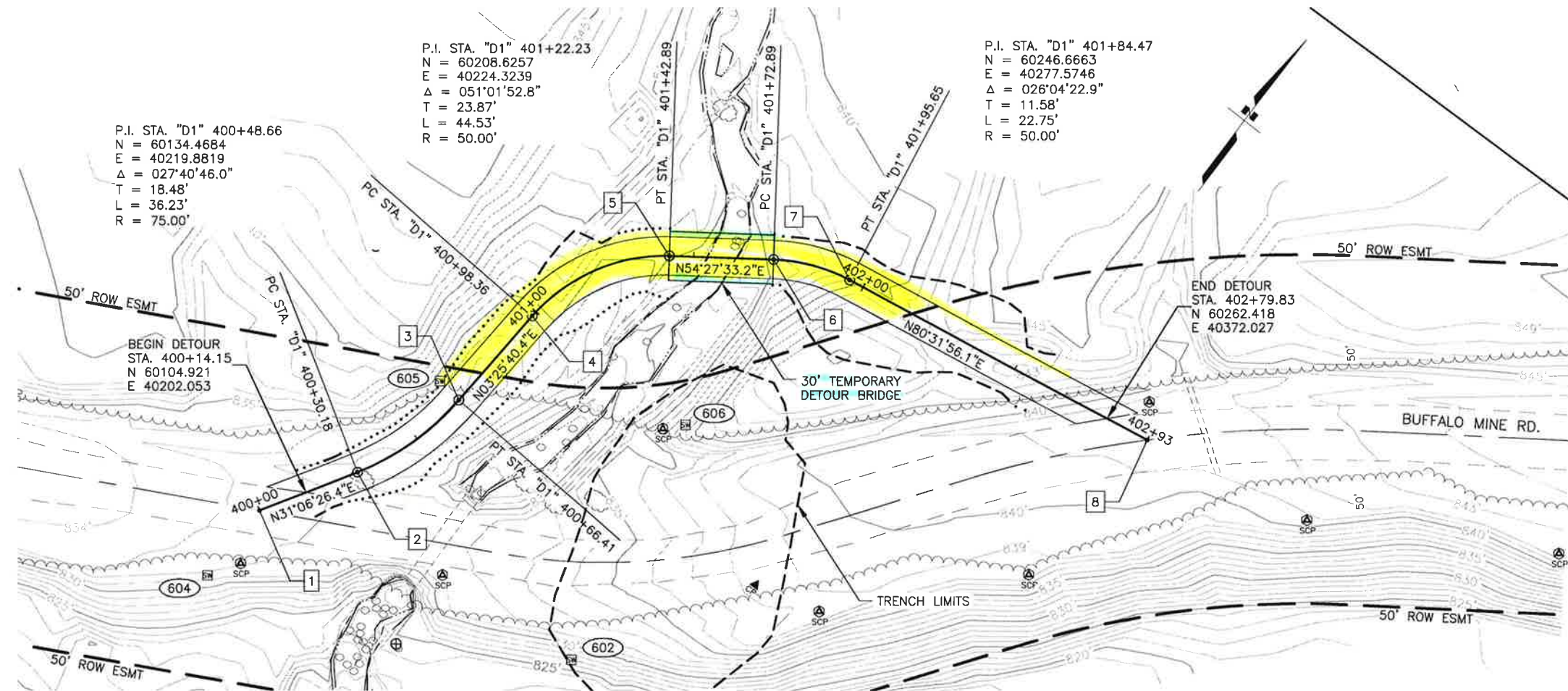


Map 1. Culvert site at Premier Creek on Buffalo Mine Road, Sutton, Alaska, (N 61.7053, W -149.0902) marked with red circle. Approximate areas of land use designated in blue boxes.

DRAWING LOCATION: H:\JOBS\24-009 PREMIER CREEK FISH PASSAGE (CYC)\CAD\DRAWINGS\24009_03_J01-DETOUR.DWG BY RYARMAX
 DATE: 11/27/2024 8:19 AM
 TIME: 8:19 AM
 SCALE: NTS
 DESIGNED BY: KMA
 CHECKED BY: RCV
 DRAFTED BY: RCV

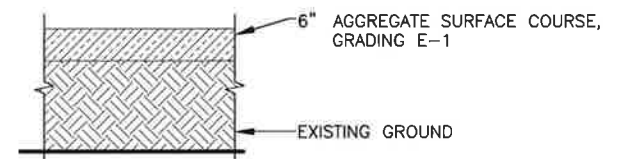
NO.	DATE	REVISION	STATE	PROJECT DESIGNATION	YEAR	SHEET NO.	TOTAL SHEETS
			ALASKA		2025	J1	J1



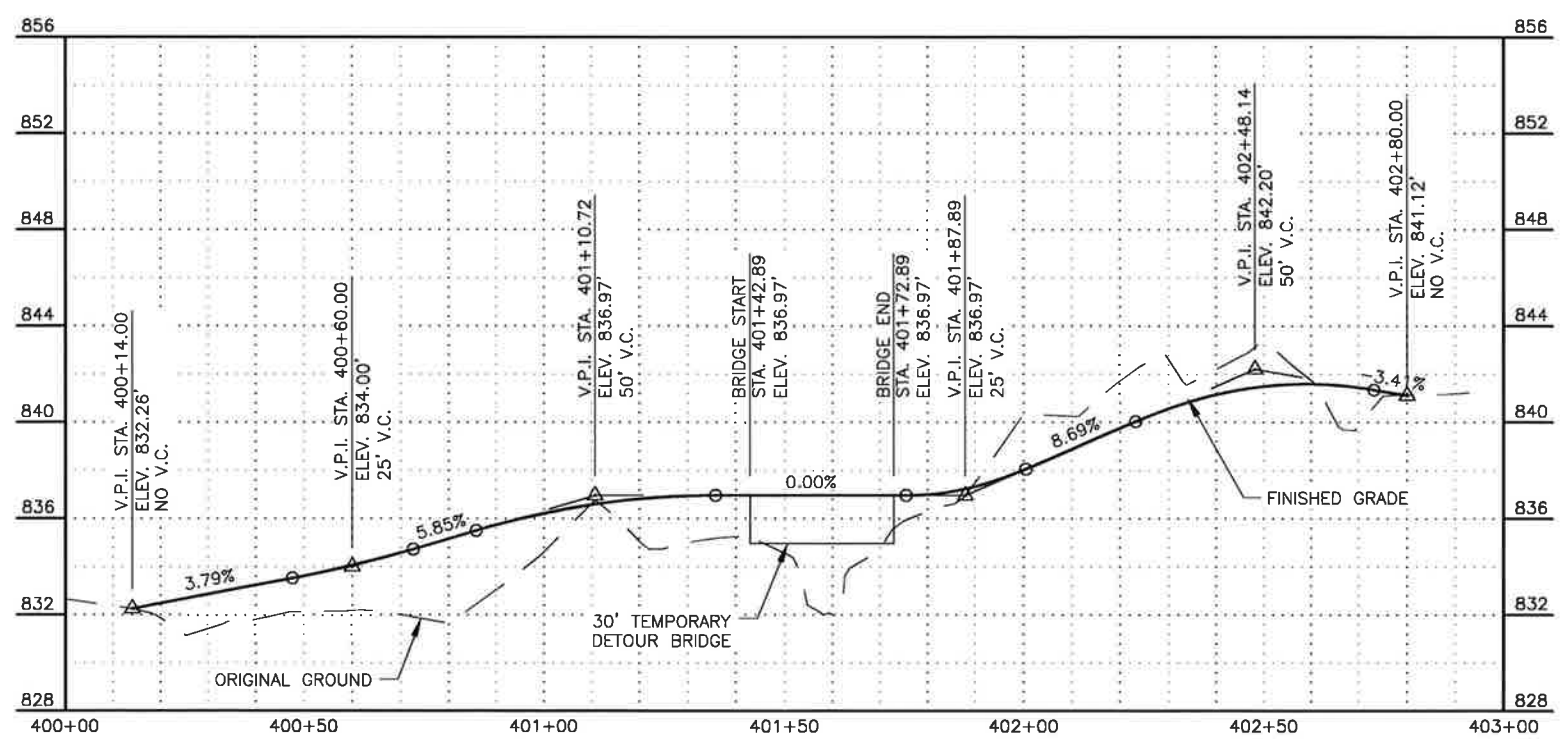
PLAN - DETOUR

POINT NO.	STATION	605	606	REMARKS
1	200+00.0	64.0'	125.2'	BEGIN "D1"
2	200+13.4	35.7'	95.8'	PC, R=75'
3	200+24.5	8.4'	66.0'	PT
4	200+34.5	32.3'	54.4'	PC, R=50'
5	200+45.5	75.0'	48.9'	BEGIN BRIDGE, PT
6	200+58.0	101.9'	53.8'	END BRIDGE, PC, R=50'
7	200+58.0	121.2'	62.7'	PT
8	200+58.0	204.1'	132.9'	END "D1"

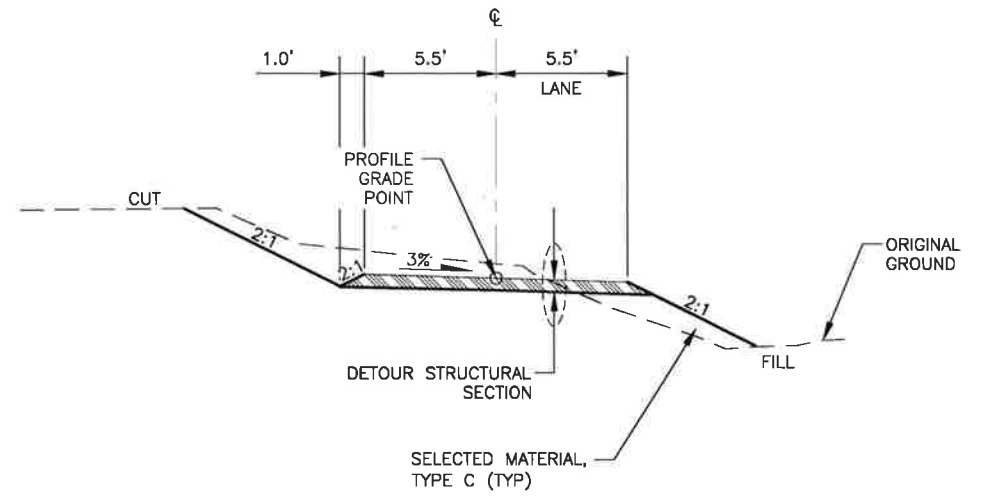
*DISTANCES MEASURED FROM BENCHMARK ELEV. TO EXISTING GROUND



DETOUR STRUCTURAL SECTION



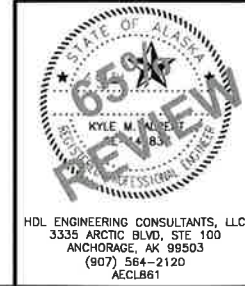
PROFILE - DETOUR



TYPICAL SECTION - DETOUR

NOTES

- CONTRACTOR IS RESPONSIBLE FOR COMPLETING AN INDEPENDENT DESIGN CHECK OF TEMPORARY BRIDGE BY A LICENSED PROFESSIONAL ENGINEER IN ACCORDANCE WITH SECTION 520 OF THE SPECIFICATIONS.
- VERIFY ADEQUATE SIGHT DISTANCE BEFORE DIVERTING TRAFFIC THROUGH TEMPORARY DETOUR ROAD.



CHICKALOON VILLAGE
 TRADITIONAL COUNCIL
 CHICKALOON, AK
**PREMIER CREEK
 FISH PASSAGE IMPROVEMENTS**
 DETOUR 1
 PLAN & PROFILE

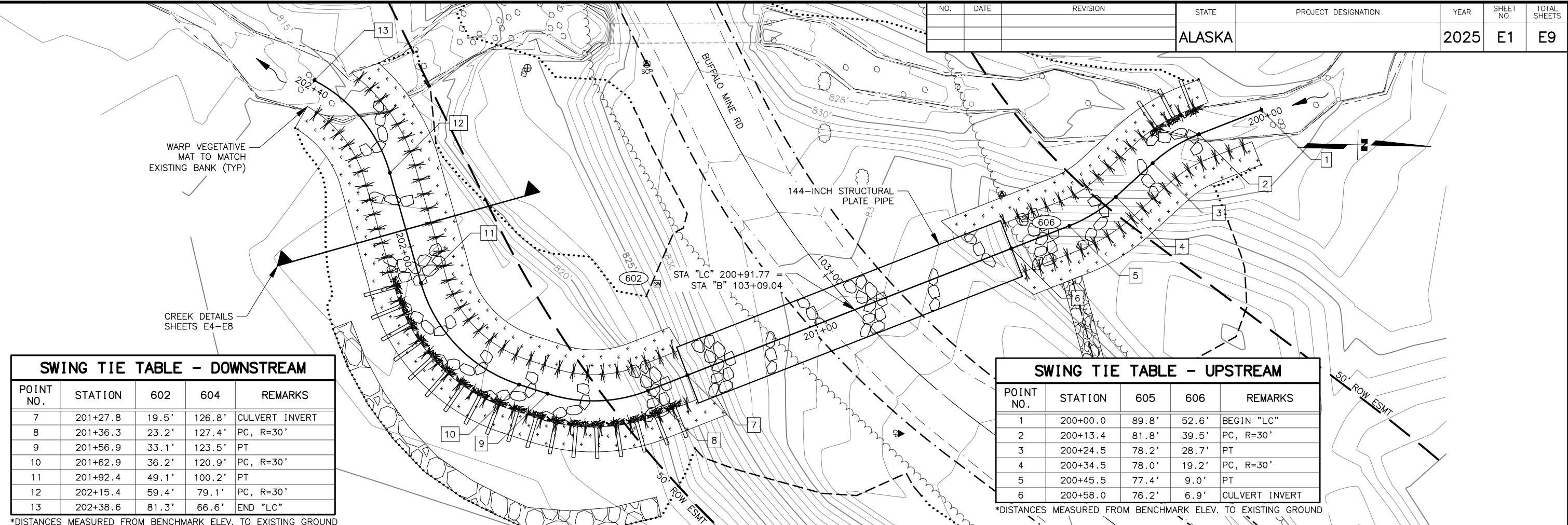
HDL ENGINEERING CONSULTANTS, LLC
 3335 ARCTIC BLVD, STE 100
 ANCHORAGE, AK 99503
 (907) 564-2120
 AECL861

DESIGNED BY: NMO
 CHECKED BY: NMO
 DRAFTED BY: RCV

SCALE: N/A
 TIME: 8:19 AM
 DATE: 11/27/2024

DRAWING LOCATION: H:\JOBS\24-009 PREMIER CREEK FISH PASSAGE (CVTC)\CAD\DRAWINGS\24009_03_E01-E09-DETAILS.DWG BY: RYARMAK

NO.	DATE	REVISION	STATE	PROJECT DESIGNATION	YEAR	SHEET NO.	TOTAL SHEETS
			ALASKA		2025	E1	E9



SWING TIE TABLE - DOWNSTREAM

POINT NO.	STATION	602	604	REMARKS
7	201+27.8	19.5'	126.8'	CULVERT INVERT
8	201+36.3	23.2'	127.4'	PC, R=30'
9	201+56.9	33.1'	123.5'	PT
10	201+62.9	36.2'	120.9'	PC, R=30'
11	201+92.4	49.1'	100.2'	PT
12	202+15.4	59.4'	79.1'	PC, R=30'
13	202+38.6	81.3'	66.6'	END "LC"

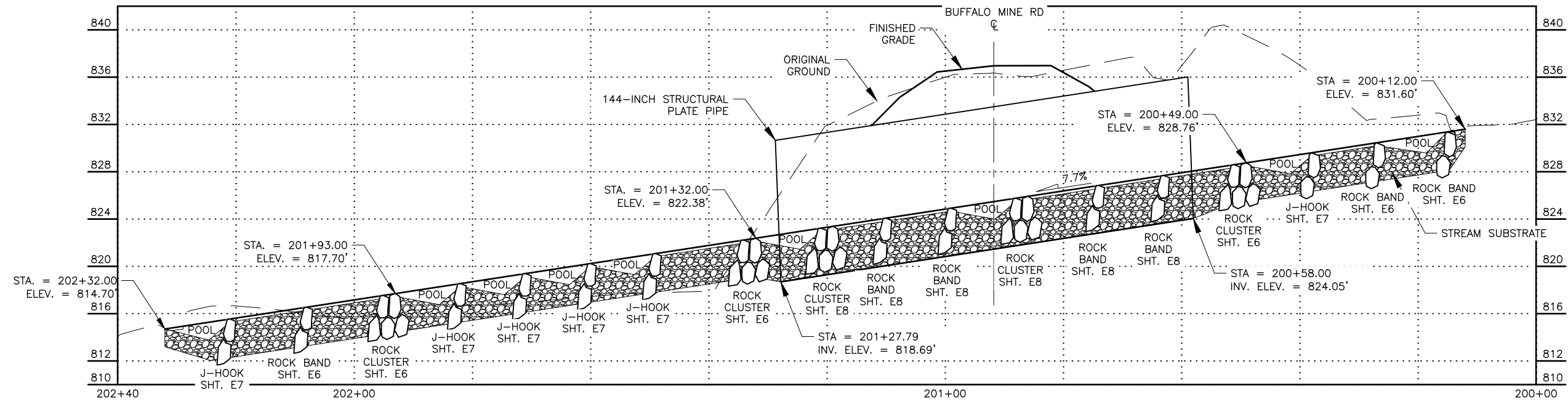
*DISTANCES MEASURED FROM BENCHMARK ELEV. TO EXISTING GROUND

SWING TIE TABLE - UPSTREAM

POINT NO.	STATION	605	606	REMARKS
1	200+00.0	89.8'	52.6'	BEGIN "LC"
2	200+13.4	81.8'	39.5'	PC, R=30'
3	200+24.5	78.2'	28.7'	PT
4	200+34.5	78.0'	19.2'	PC, R=30'
5	200+45.5	77.4'	9.0'	PT
6	200+58.0	76.2'	6.9'	CULVERT INVERT

*DISTANCES MEASURED FROM BENCHMARK ELEV. TO EXISTING GROUND

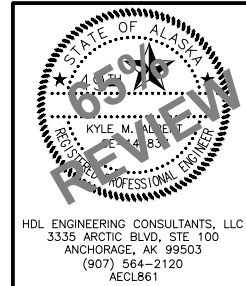
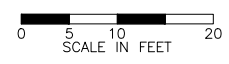
PLAN VIEW



PROFILE VIEW

HYDRAULIC AND HYDROLOGIC SUMMARY

DRAINAGE AREA	2.6 SQUARE MILES	
EXCEEDANCE PROBABILITY	1% (DESIGN)	50% (BANKFULL)
RETURN PERIOD	100 YEAR (Q ₁₀₀)	2 YEAR (Q ₂)
DESIGN DISCHARGE	312 CFS	45 CFS
DESIGN HIGH WATER ELEVATION	833.1 FEET	829.1 FEET
ANTICIPATED ADDITIONAL BACKWATER AT Q ₁₀₀ = 0.0 FEET		



CHICKALOON VILLAGE
 TRADITIONAL COUNCIL
 CHICKALOON, AK

**PREMIER CREEK
 FISH PASSAGE IMPROVEMENTS**

**LOWER CULVERT PLAN AND
 PROFILE**

HDL ENGINEERING CONSULTANTS, LLC
 5335 ARCTIC BLVD., STE 100
 ANCHORAGE, AK 99503
 (907) 564-2120
 AECL861