

Q:\Rw\LANDPROJECTS\R2\STATEWIDE\SE_HARBORS\ENTRANCE_ISLAND\dwg\ENTRANCE_ISLAND.dwg

FLOAT POSITION		
N 57°24'45.3"	W 133°26'26.6"	W. END
N 57°24'45.0"	W 133°26'25.0"	E. END



Entrance Island

U.S. Forest Service

Hobart Bay

BARGE
(ROTTEN)

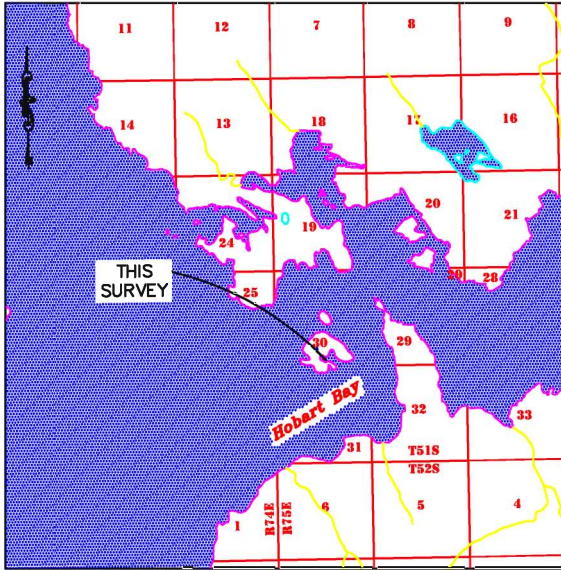
AKSPC Z1 N: 2037682.2175
AKSPC Z1 E: 2730079.9443
LATITUDE: 57°24'46.0928"
LONGITUDE: -133°26'34.0319"

WOOD FLOAT
METAL PILINGS
WOOD PILINGS

MEANDER LINE

BUILDING

AKSPC Z1 N: 2037477.1054
AKSPC Z1 E: 2730494.6680
LATITUDE: 57°24'44.0582"
LONGITUDE: -133°26'26.4716"



VICINITY MAP

1" = 1 MILE

LEGEND

GPS CONTROL POINT
MONUMENT SET THIS
SURVEY (#5 REBAR WITH
PLASTIC CAP)

GENERAL NOTES

1. No Alaska Tidelands Survey or ADL identification number on record for this facility.
2. *** GPS positions for this location are degraded due to poor satellite visibility and short occupation times. Use coordinates with caution.
3. *** Due to the lack of recovered monumentation, the refuge float and other structures are shown in relation to the meander line of the shore.

Fieldwork conducted June 11, 2008 by DOT/PF Survey Crew Johnson, Cottrell.

Entrance Island Float

Juneau Recording District

SURVEYOR: State of Alaska D.O.T./P.F. Southeast Region		
OWNERS: STATE OF ALASKA DEPT. OF NATURAL RESOURCES	SCALE: 1" = 50'	SHEET 1 OF 1
	DATE: 5/2009	