




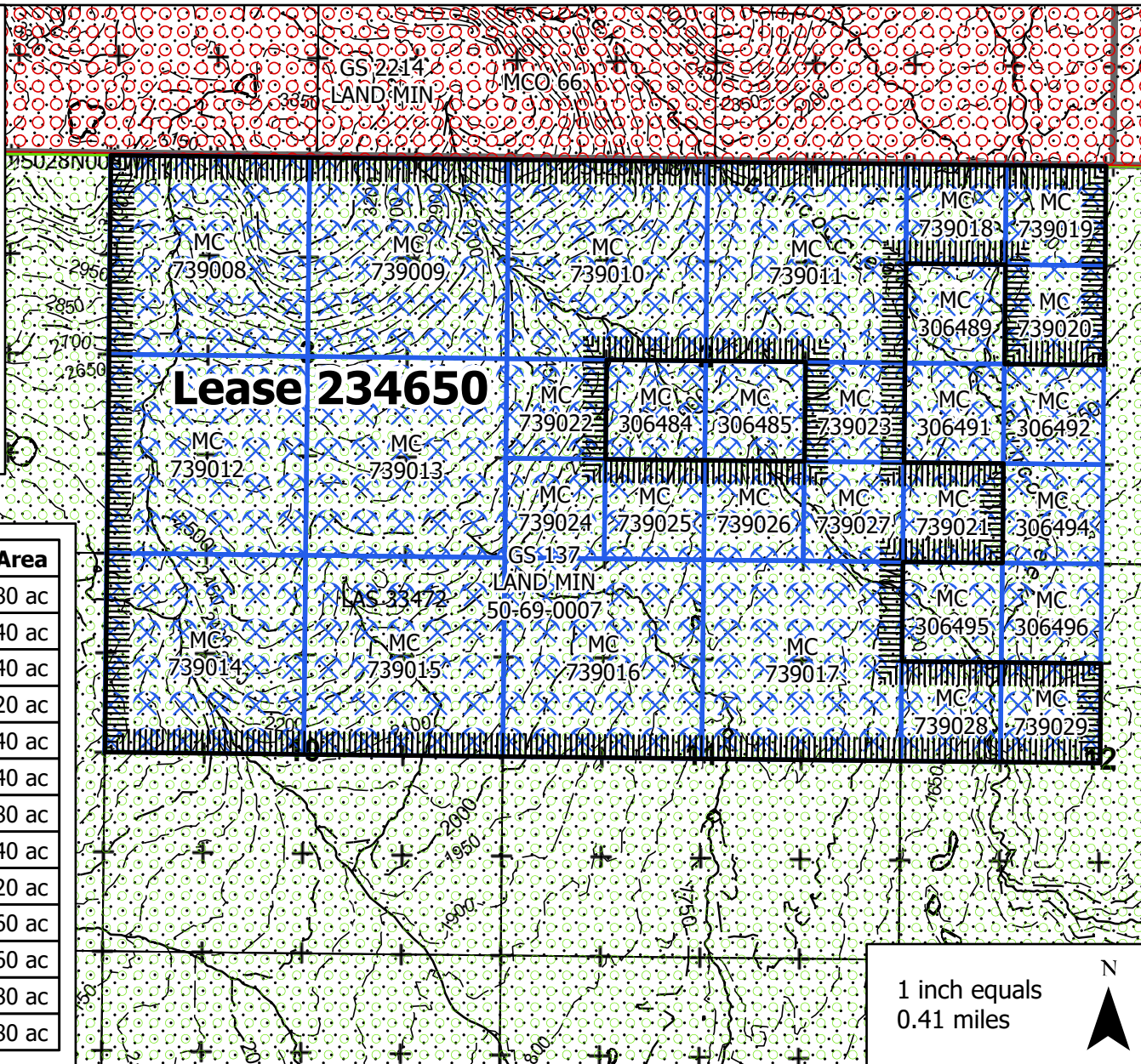
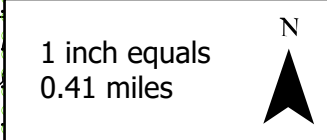


# Lease ADL 234650

-  Lease 234650
-  MC
-  Mineral Order
-  Land Permit or Lease
-  State TA Patented



MTRS	Area
S028N008W01 N/2 NW	80 ac
S028N008W01 SE NW	40 ac
S028N008W01 SW SW	40 ac
S028N008W02 N/2	320 ac
S028N008W02 NE SE	40 ac
S028N008W02 NW SW	40 ac
S028N008W02 S/2 S/2	80 ac
S028N008W03 ALL	640 ac
S028N008W10 N/2	320 ac
S028N008W11 NE	160 ac
S028N008W11 NW	160 ac
S028N008W12 S/2 NW	80 ac
<b>Total:</b>	<b>2,080 ac</b>



Alaska\_50Ft\_Contours by Alaska DGGS; PLSS\_plus\_AliquotQQ\_v5 by SOA DNR; World\_Basemap\_v2 by ESRI; World\_Contours\_v2 by ESRI; World\_Hillshade\_v2 by ESRI; State\_boundary by ESRI; Map data © OpenStreetMap contributors, Microsoft, Facebook, Google, Esri Community Maps contributors, Map layer by Esri