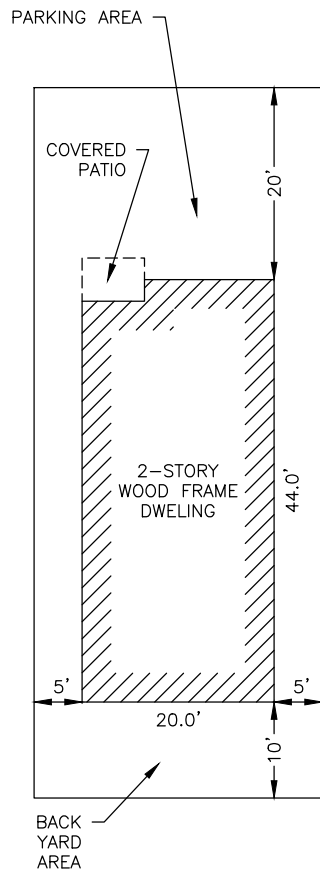


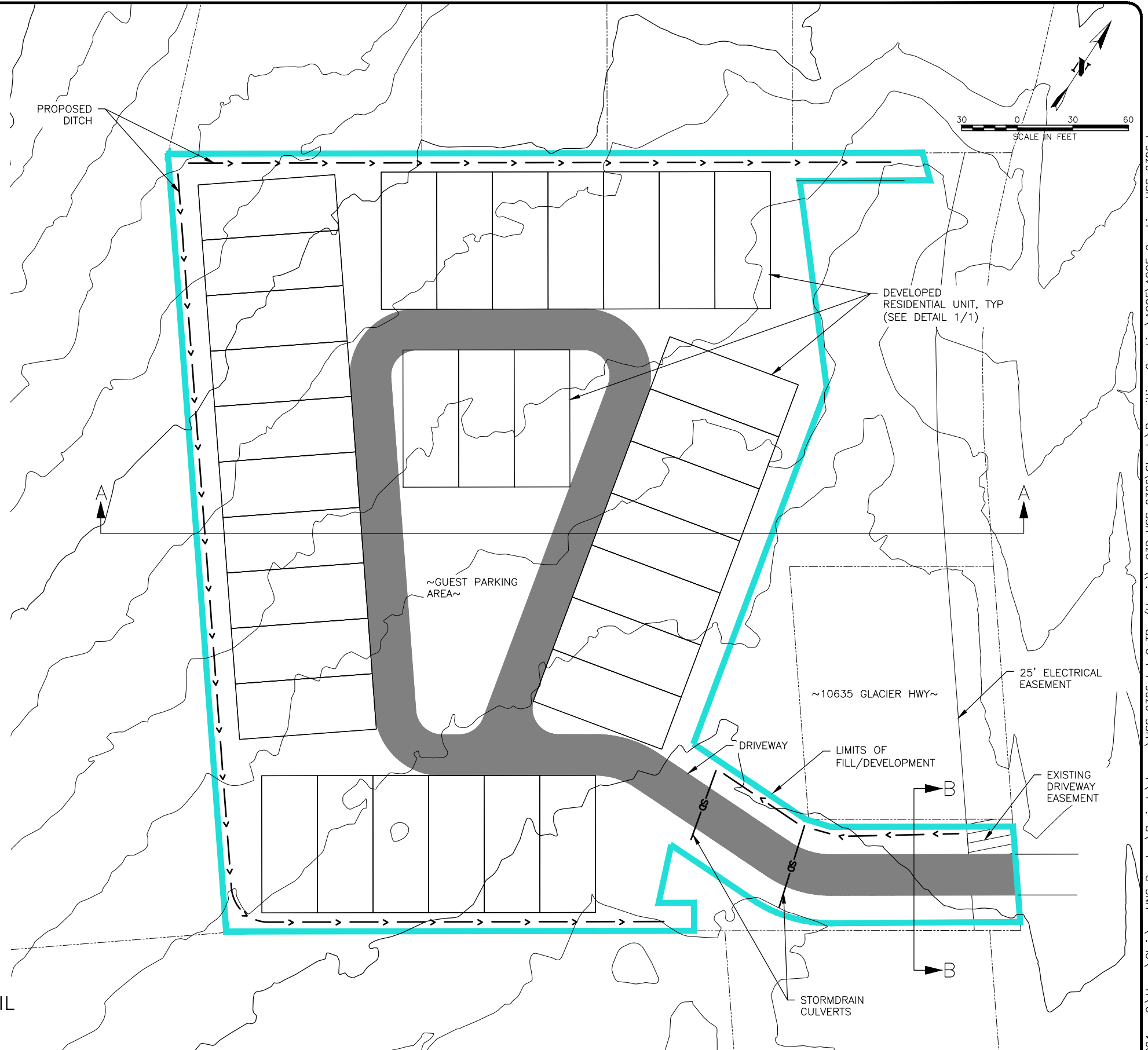
LEGEND

 LIMITS OF FILL/FILL/DEVELOPMENT

- NOTES:
1. THE CONCEPTUAL SITE LAYOUT SHOWN IN THESE PLANS IS APPROXIMATE AND MAY BE REVISED WITHIN THE PERMITTED WETLAND FILL AREA.
 2. SEE SHEETS 2-4 FOR STREAM AND WETLAND LOCATIONS.
 3. SEE SHEET 4 FOR SECTION VIEWS.
 4. SEE SHEET 5 FOR AN OVERLAY OF THE DEVELOPED AREA OVER THE WETLANDS.



1 RESIDENTIAL UNIT DETAIL
SCALE: NOT TO SCALE



RECORD OF REVISIONS			
No.	DATE	DESCRIPTION	BY



DRAWN BY: C. BYDLON
DESIGNED BY: C. BYDLON
CHECKED BY: L. CHAMBERS

USS 2386 DEVELOPMENT

RICHARD HARRIS

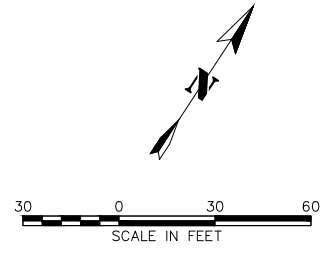
USS 2386 - CONCEPTUAL SITE LAYOUT

SHEET NUMBER	
1	OF
5	

LEGEND

- CLASSIFIED ONSITE UPLAND AREA
- UNCLASSIFIED ONSITE AREA
- CLASSIFIED ONSITE WETLAND AREA – TYPE PF01/4g
- LIMITS OF FILL/DEVELOPMENT

NOTES:
 1. THE CONCEPTUAL SITE LAYOUT SHOWN IN THESE PLANS IS APPROXIMATE AND MAY BE REVISED WITHIN THE PERMITTED WETLAND FILL AREA.
 2. ALL WETLAND BOUNDARIES WERE DELINEATED ON 8/13/2024.



~10635 GLACIER HWY~
 LIMITS OF FILL/DEVELOPMENT

RECORD OF REVISIONS			
No.	DATE	DESCRIPTION	BY



DRAWN BY: C. BYDLON
 DESIGNED BY: C. BYDLON
 CHECKED BY: L. CHAMBERS

2201 DUNN STREET, STE 2
 JUNEAU, AK 99801
 (907) 780-4004

solutions@proHNS.com
 www.proHNS.com




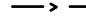
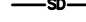
**USS 2386
 DEVELOPMENT**

RICHARD HARRIS

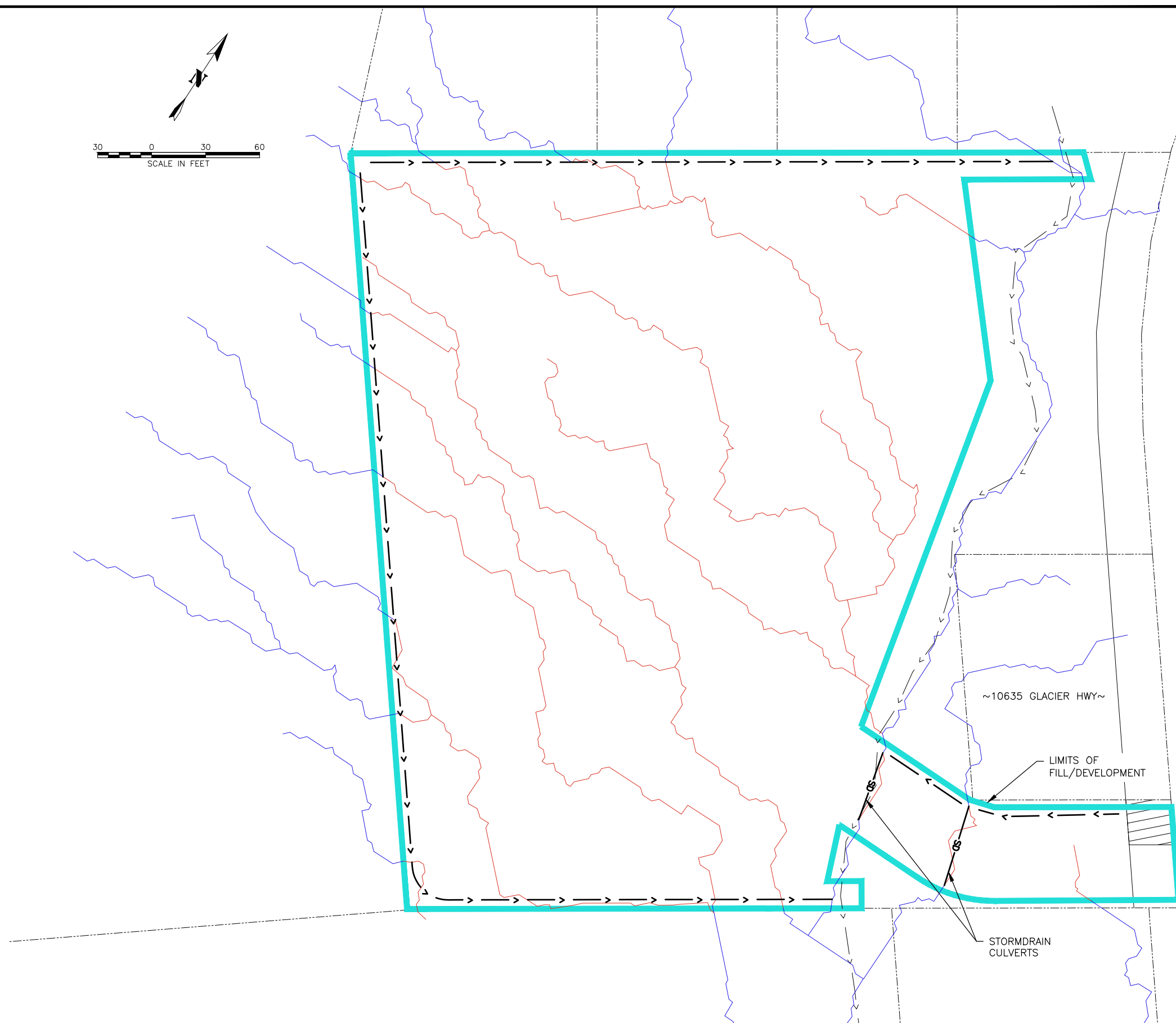
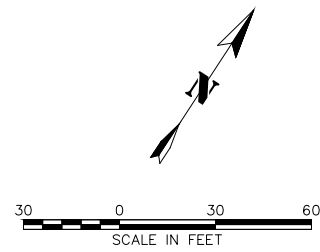
USS 2386 - WETLANDS

SHEET NUMBER
2
OF
5

LEGEND

-  LIMITS OF FILL/DEVELOPMENT
-  DIVERTED STREAM (ORIGINAL LOCATION)
-  EXISTING STREAM
-  PROPOSED DRAINAGE DITCH
-  PROPOSED CULVERT

- NOTES:
1. THE CONCEPTUAL SITE LAYOUT SHOWN IN THESE PLANS IS APPROXIMATE AND MAY BE REVISED WITHIN THE PERMITTED WETLAND FILL AREA.
 2. ALL STREAM LOCATIONS WERE DELINEATED ON 8/13/2024.



RECORD OF REVISIONS			
No.	DATE	DESCRIPTION	BY

proHNS LLC
 CERTIFICATE OF AUTHORIZATION
 #100662

DRAWN BY: C. BYDLON
 DESIGNED BY: C. BYDLON
 CHECKED BY: L. CHAMBERS

2201 DUNN STREET, STE 2
 JUNEAU, AK 99801
 (907) 780-4004

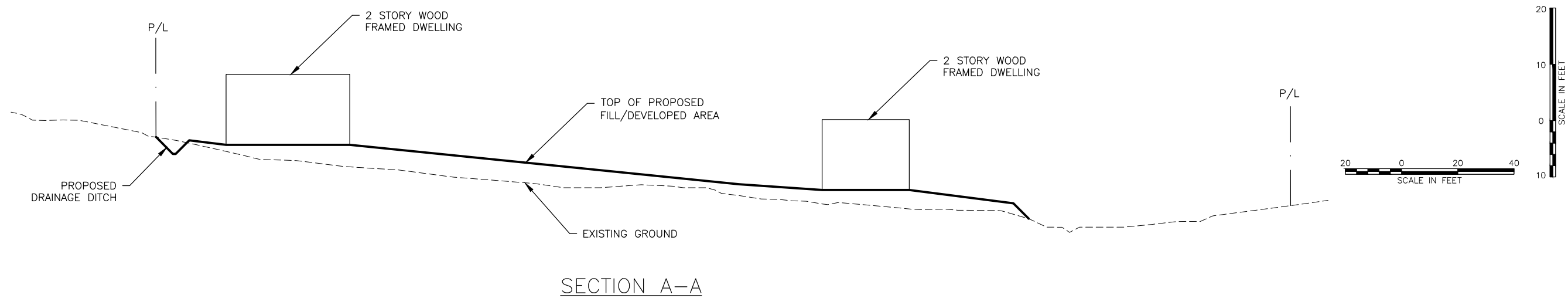
solutions@proHNS.com
 www.proHNS.com

**USS 2386
 DEVELOPMENT**

RICHARD HARRIS

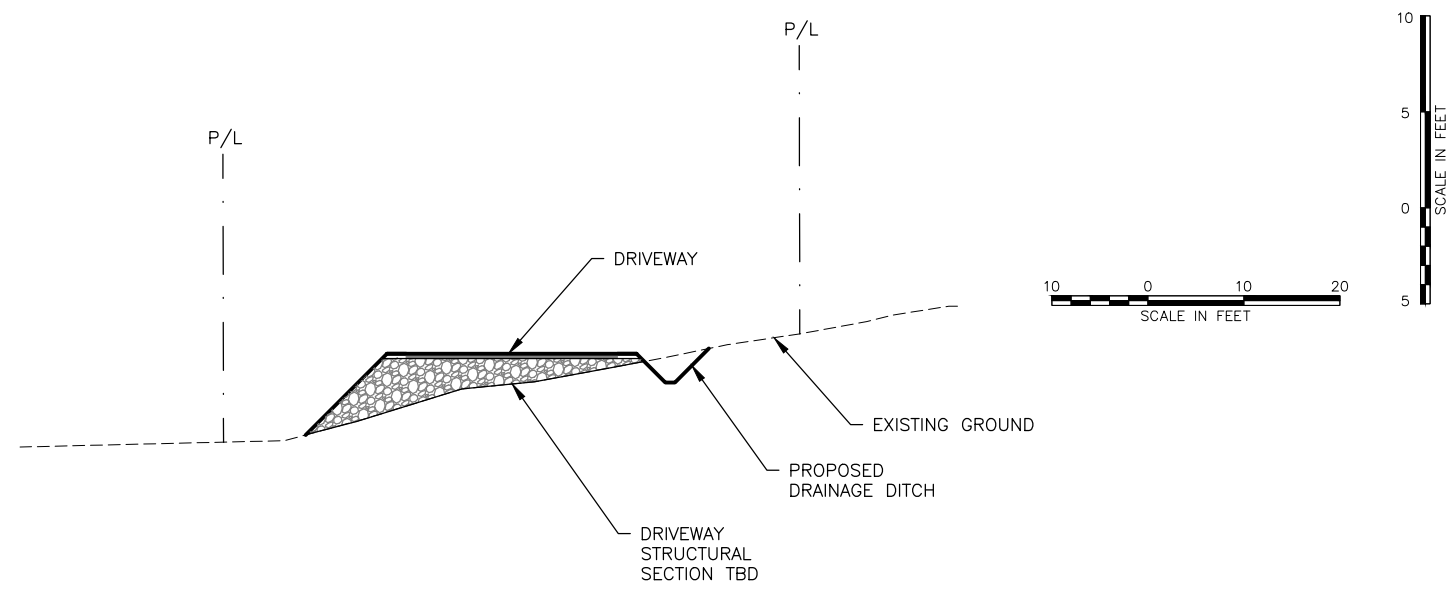
USS 2386 - STREAMS

SHEET NUMBER
3
OF
5




SECTION A-A

- NOTES:
1. THE CONCEPTUAL SITE LAYOUT SHOWN IN THESE PLANS IS APPROXIMATE AND MAY BE REVISED WITHIN THE PERMITTED WETLAND FILL AREA.
 2. THE CONCEPTUAL TYPICAL SECTIONS SHOWN IN THESE PLANS ARE APPROXIMATE AND MAY BE REVISED WITHIN THE PERMITTED WETLAND FILL AREA.



SECTION B-B

RECORD OF REVISIONS			
No.	DATE	DESCRIPTION	BY



2201 DUNN STREET, STE 2
JUNEAU, AK 99801
(907) 780-4004

CERTIFICATE OF AUTHORIZATION #100662

solutions@proHNS.com
www.proHNS.com

DRAWN BY:	C. BYDLON
DESIGNED BY:	C. BYDLON
CHECKED BY:	L. CHAMBERS

USS 2386
DEVELOPMENT

RICHARD HARRIS

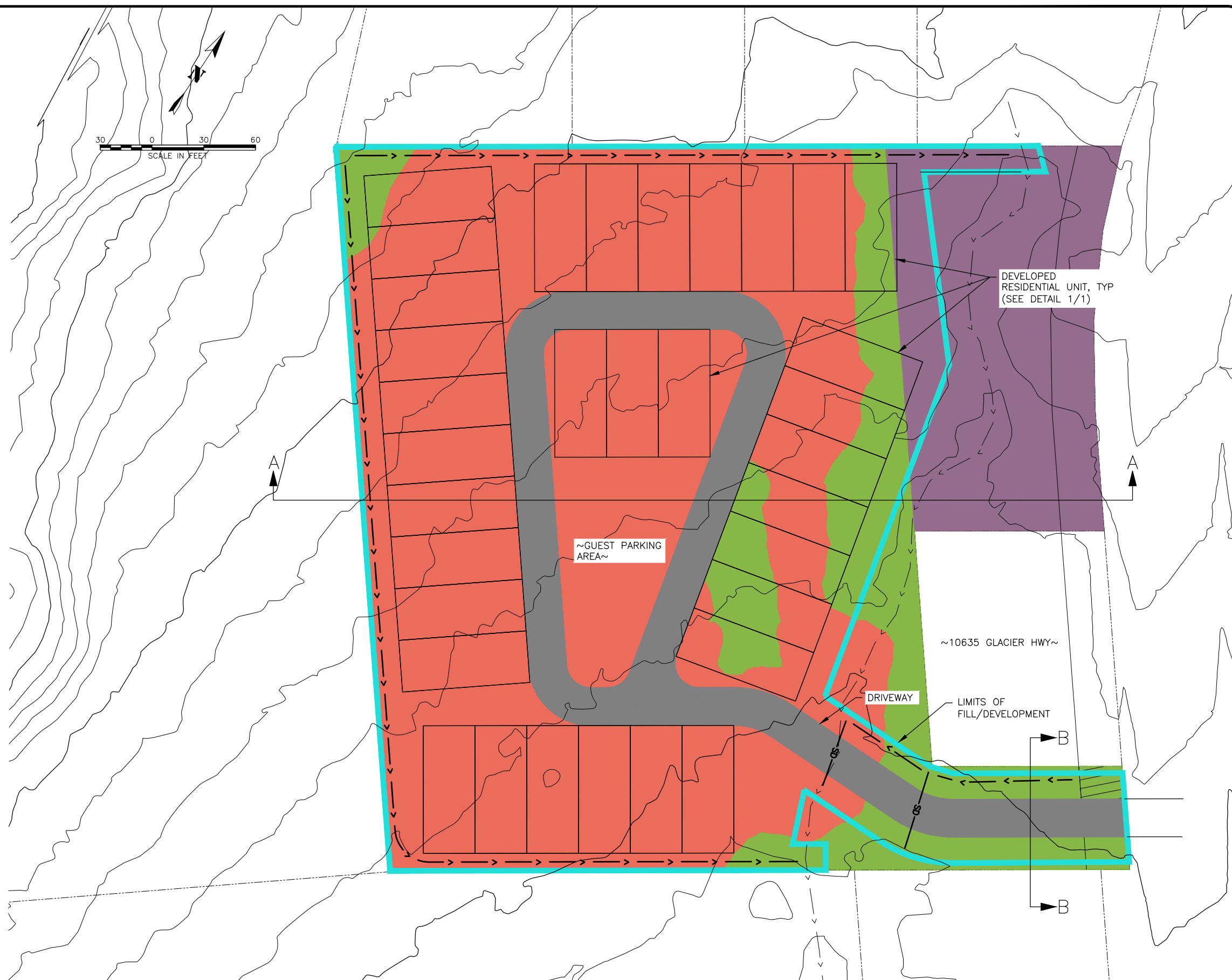
USS 2386 -
SECTION VIEWS

SHEET NUMBER
4
OF
5

LEGEND

- CLASSIFIED ONSITE UPLAND AREA
- UNCLASSIFIED ONSITE AREA
- CLASSIFIED ONSITE WETLAND AREA - TYPE PF01/4g
- LIMITS OF FILL/DEVELOPMENT

NOTES:
 1. THE CONCEPTUAL SITE LAYOUT SHOWN IN THESE PLANS IS APPROXIMATE AND MAY BE REVISED WITHIN THE PERMITTED WETLAND FILL AREA.
 2. ALL WETLAND BOUNDARIES WERE DELINEATED ON 8/13/2024.



RECORD OF REVISIONS			
No.	DATE	DESCRIPTION	BY



DRAWN BY: C. BYDLON
 DESIGNED BY: C. BYDLON
 CHECKED BY: L. CHAMBERS

2201 DUNN STREET, STE 2
 JUNEAU, AK 99801
 (907) 780-4004

solutions@proHNS.com
 www.proHNS.com

**USS 2386
 DEVELOPMENT**

RICHARD HARRIS

**USS 2386 -
 WETLAND IMPACT
 OVERLAY**

SHEET NUMBER
5
OF
5