

MAP FEATURES

Land status prior to mining disturbance:

-  Upland
-  Water
-  Wetland

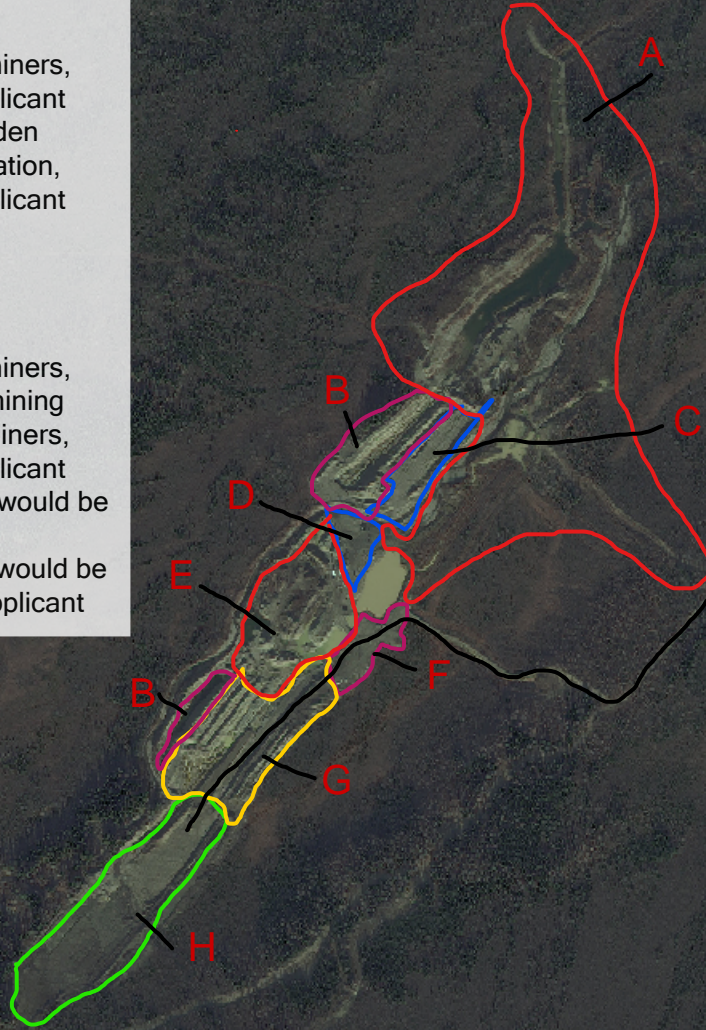


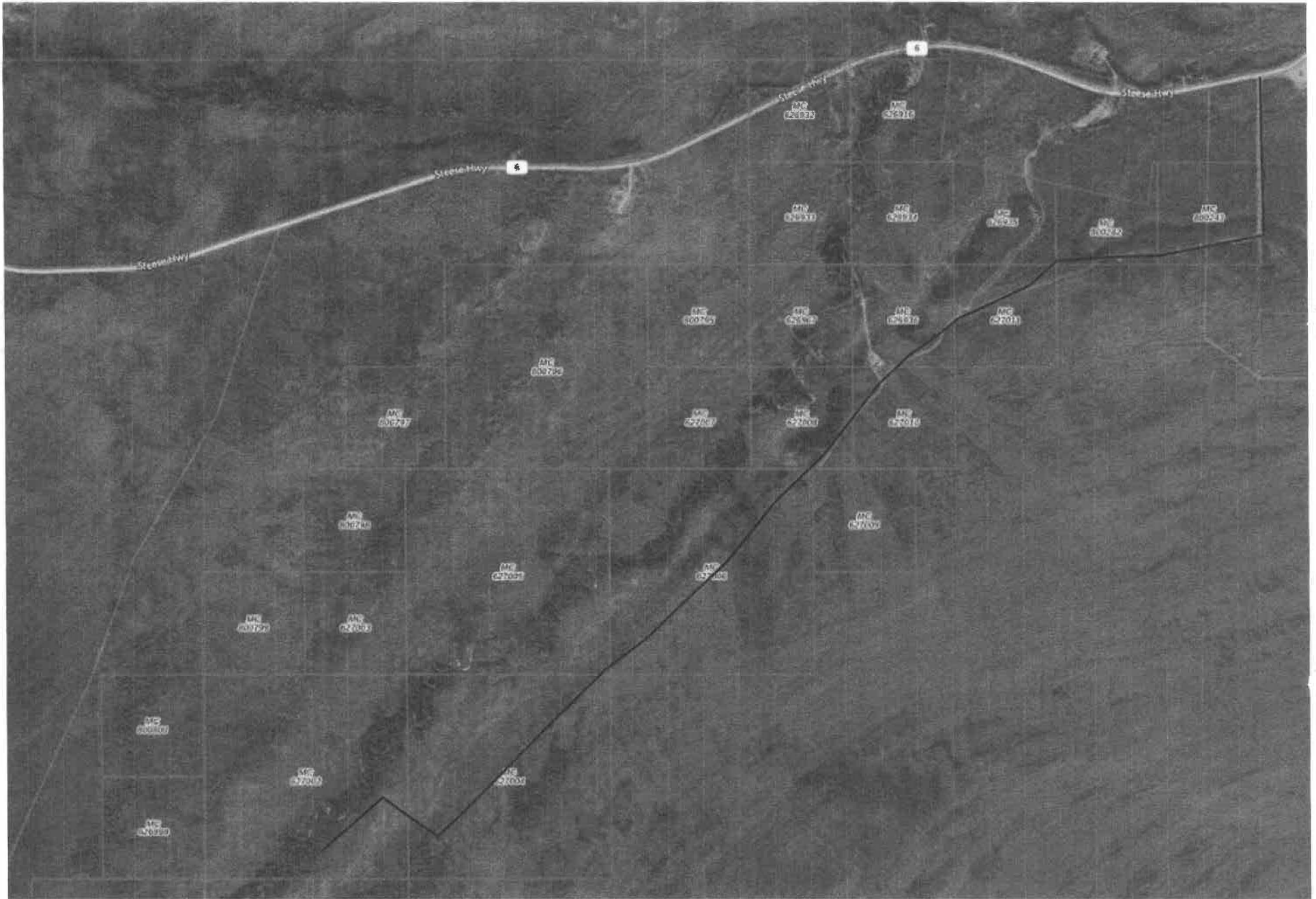
Lat: 65.5427
 Long: -144.9325
 Scale: 1:12,000



LEGEND

- A. Disturbed by previous miners, would be reclaimed by applicant
- B. Vegetation and overburden available for use in reclamation, would be reclaimed by applicant
- C. Previously reclaimed by applicant
- D. Previously reclaimed by applicant
- E. Disturbed by previous miners, applicant would continue mining
- F. Disturbed by previous miners, would be reclaimed by applicant
- G. Disturbed by applicant, would be reclaimed by applicant
- H. Disturbed by applicant, would be mined and reclaimed by applicant



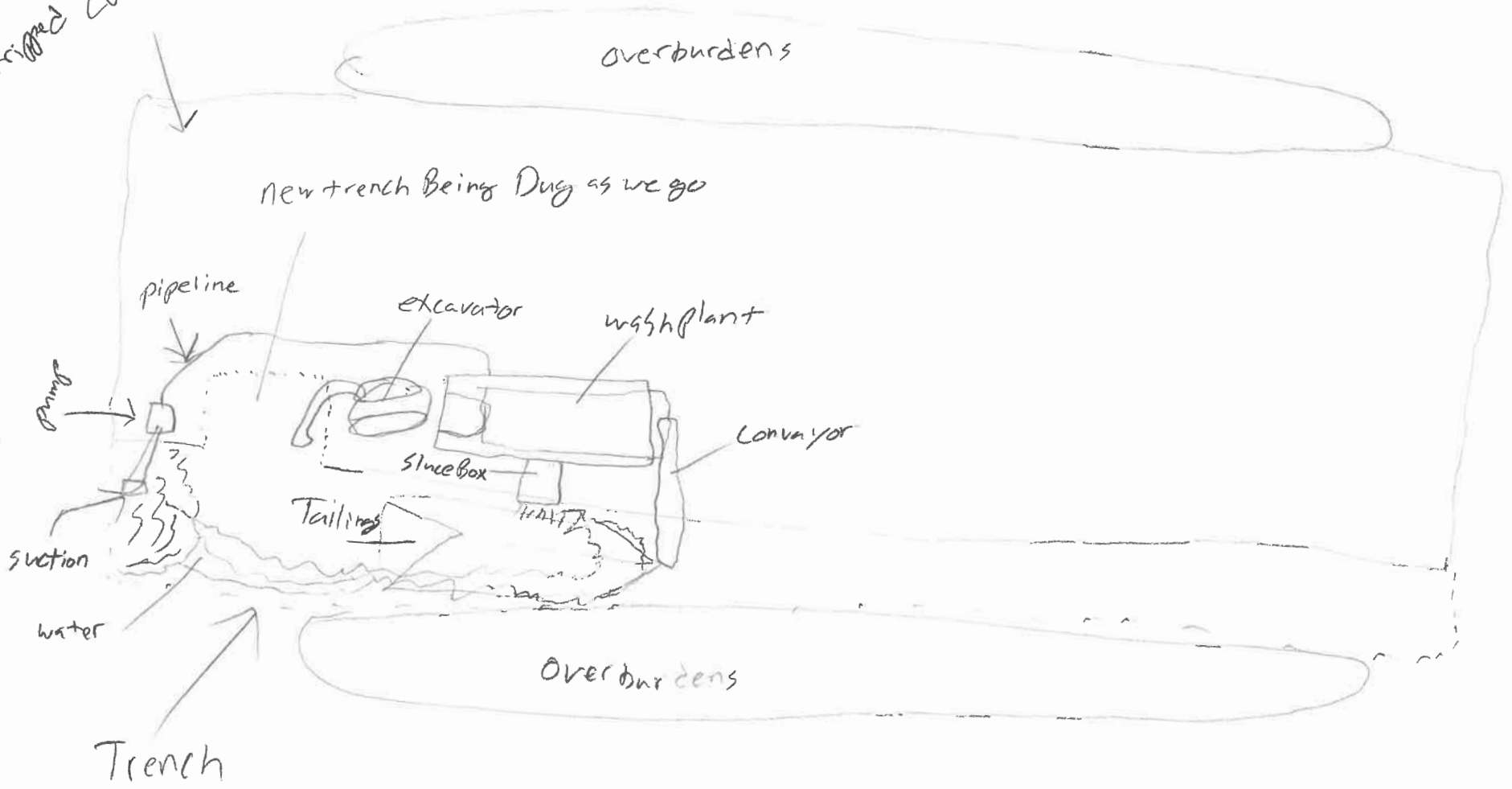


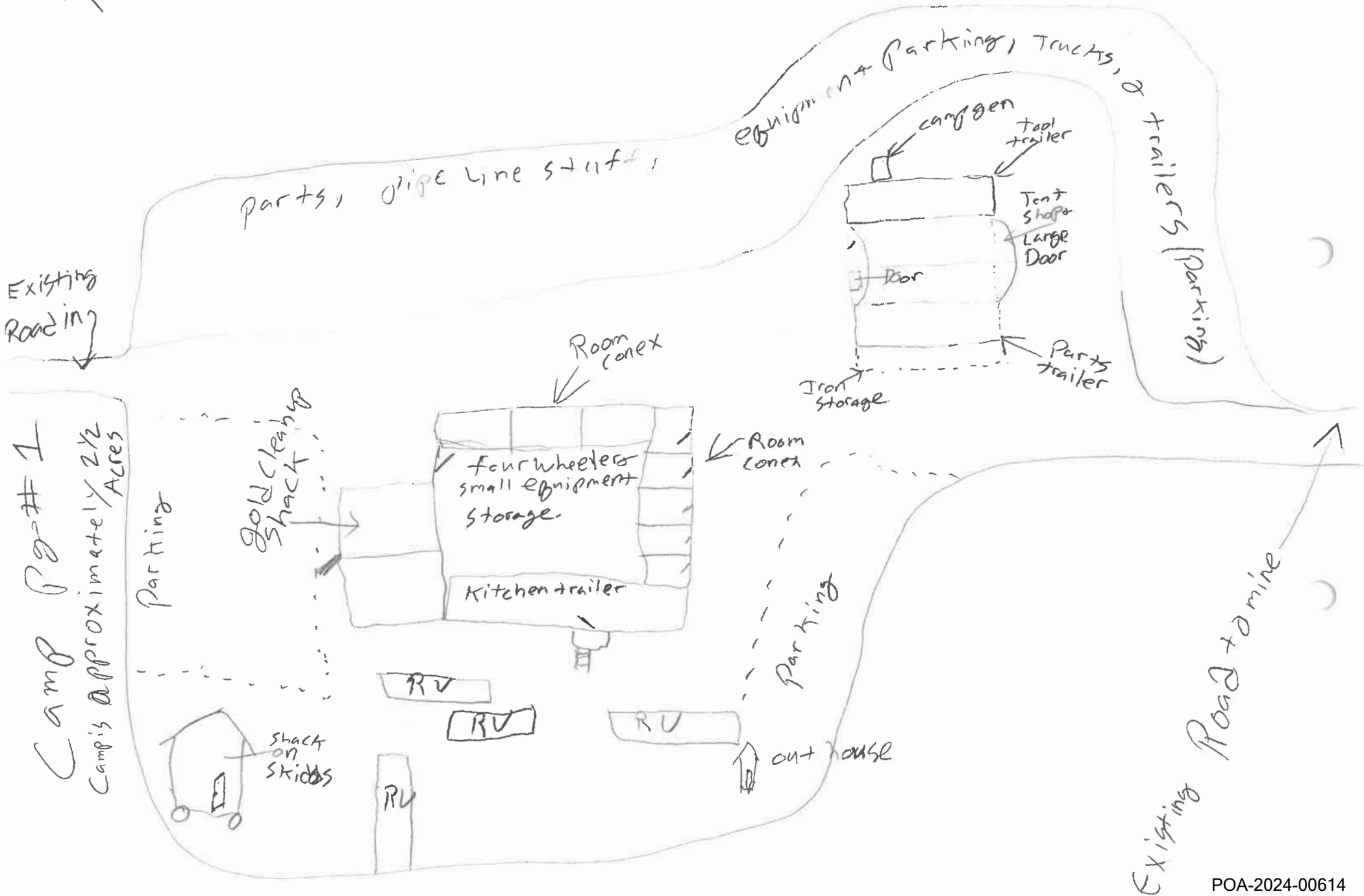
Mine access road from mile 126 Steese to mine.

Cut is approx. 8 to 10 Acres

stripped cut or pay

Mine Phase # 2





Camp #1
Camp is approximately 2 1/2 Acres

Road + mine existing

