

Legend

- ★ Whiskey Bravo Airstrip
- ▬ Estelle Project Area Claims

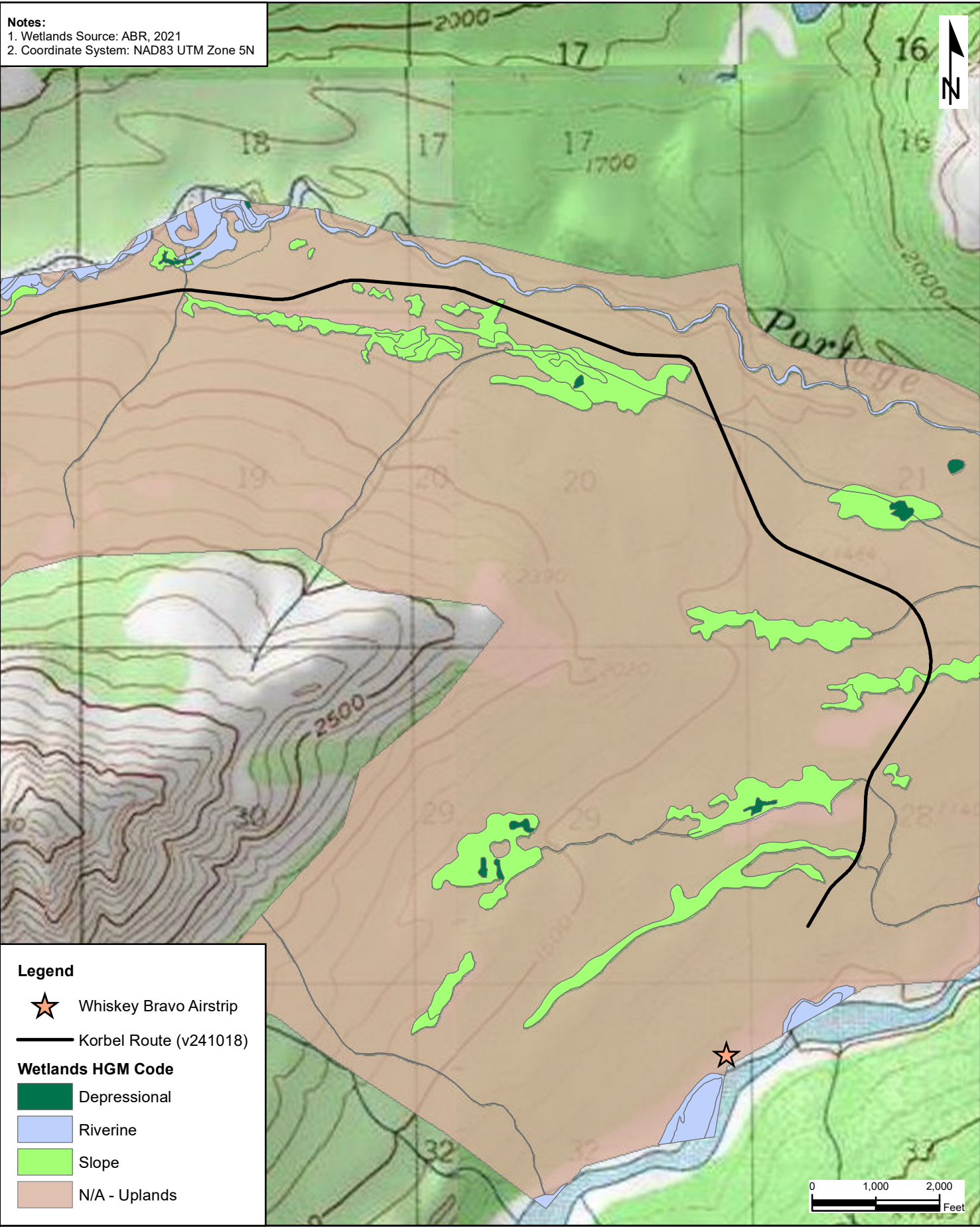
Notes:

1. Applicable MTRS and ADLs are detailed in the Plan of Operations, Attachment 1
2. Topo Imagery - ESRI basemaps
3. MXD Projection - NAD83 (2011) UTM Zone 5N (meters)

Estelle Project Area, Alaska

Applicant Name:
 Nova Minerals
 Date:
 2/1/2023
 APMA#:

Notes:
1. Wetlands Source: ABR, 2021
2. Coordinate System: NAD83 UTM Zone 5N



D:\RPM_Korbelt_Rte\GIS\Korbelt_WetlandsRteRvrsd_Mpbk.mxd

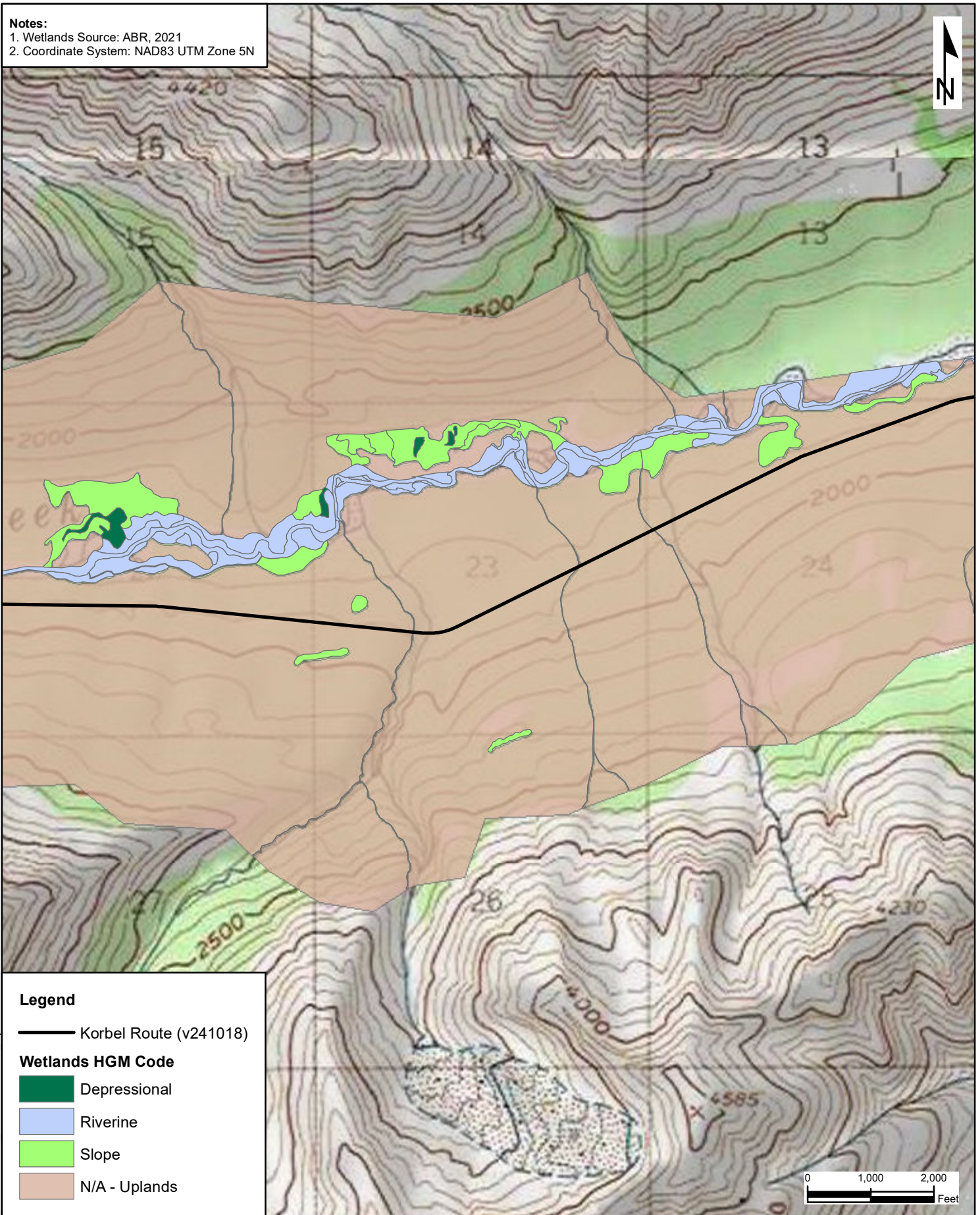
Legend

- ★ Whiskey Bravo Airstrip
- Korbelt Route (v241018)

Wetlands HGM Code

- Depressional
- Riverine
- Slope
- N/A - Uplands



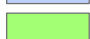
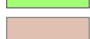
Notes:
1. Wetlands Source: ABR, 2021
2. Coordinate System: NAD83 UTM Zone 5N



Legend

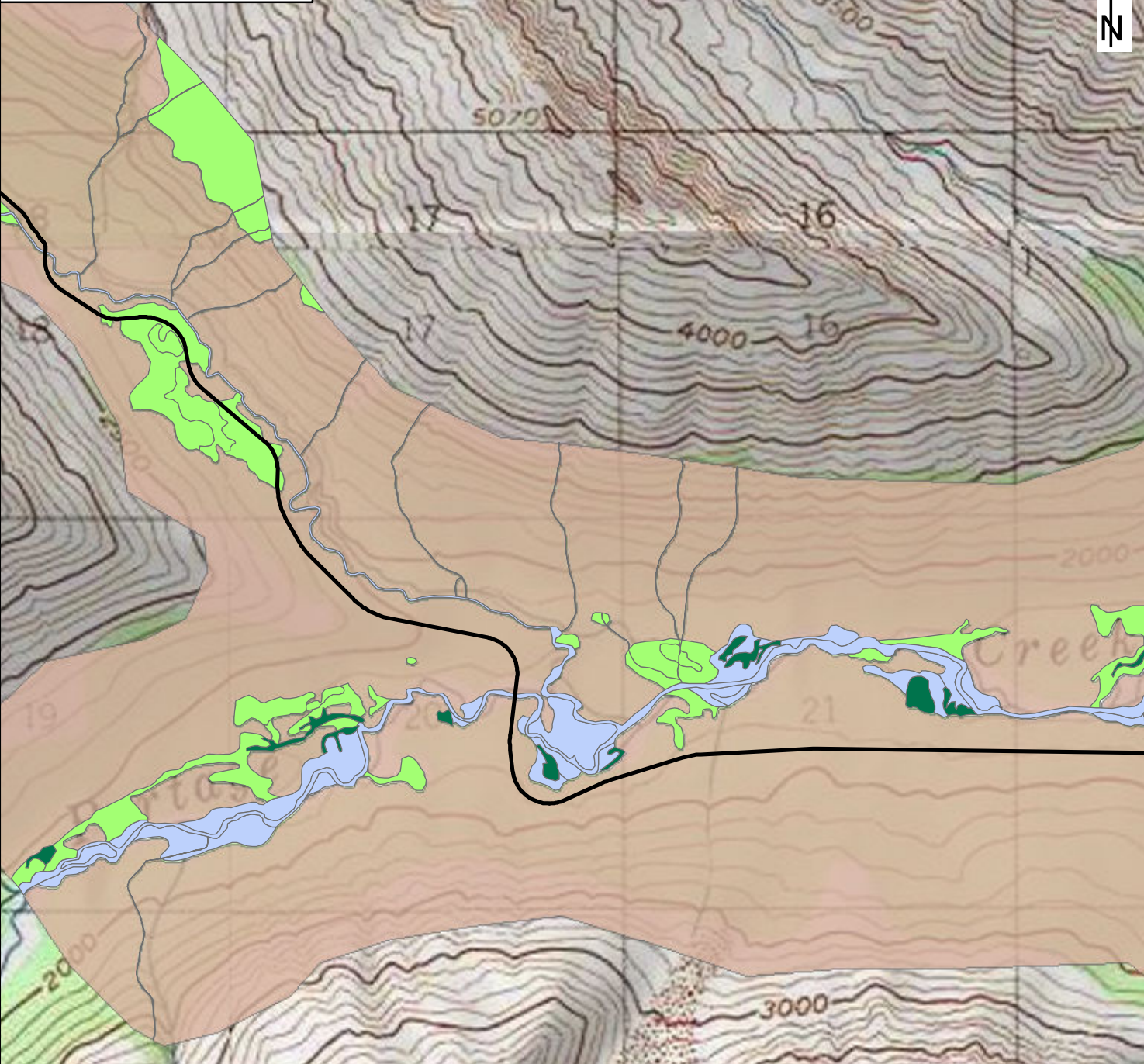
— Korbelt Route (v241018)

Wetlands HGM Code

-  Depressional
-  Riverine
-  Slope
-  N/A - Uplands

D:\RPM_Korbelt_Rte\GIS\Korbelt_WetlandsRteRvrsd_Mpbk.mxd

Notes:
1. Wetlands Source: ABR, 2021
2. Coordinate System: NAD83 UTM Zone 5N

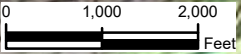


Legend

- Korbelt Route (v241018)

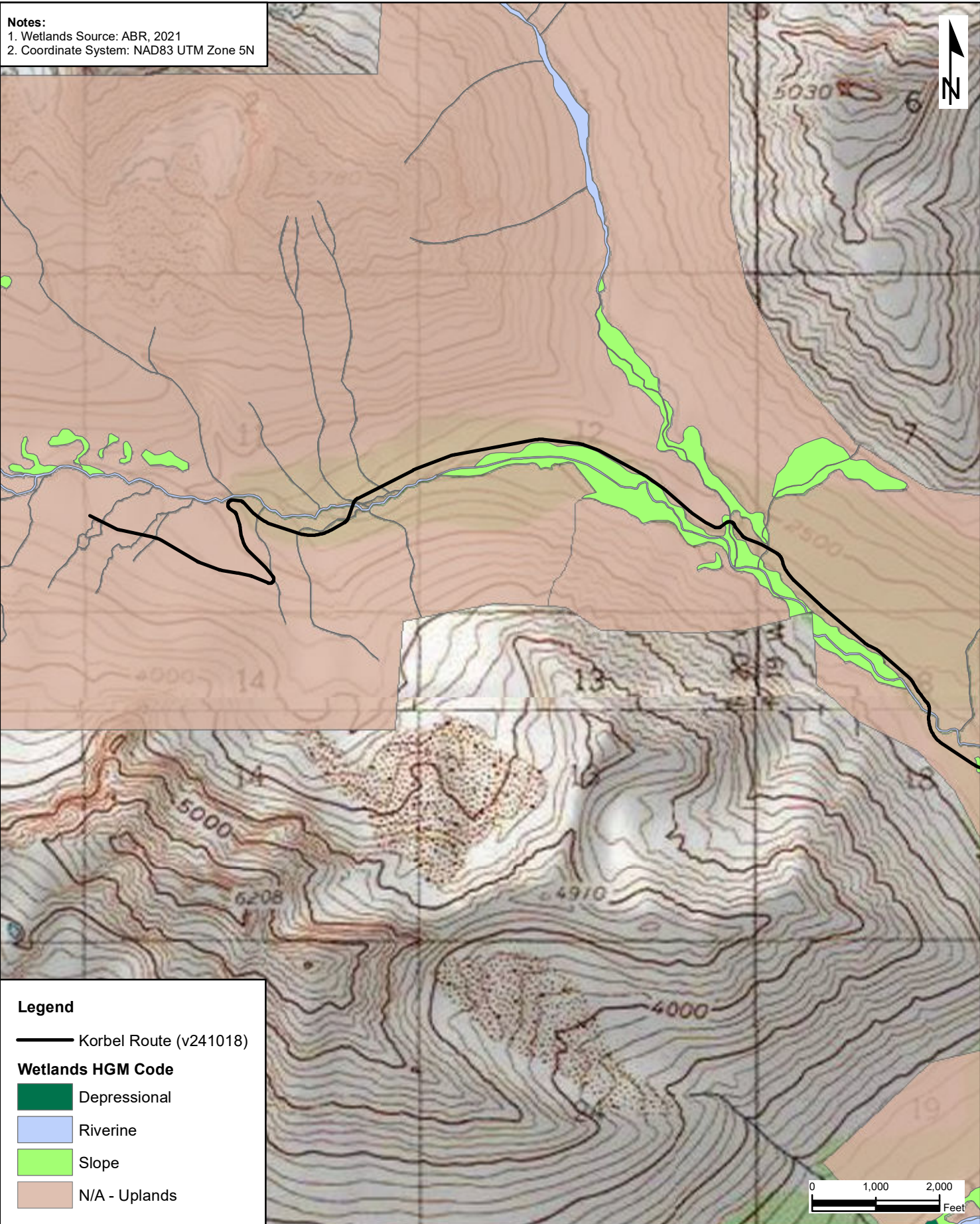
Wetlands HGM Code

- Depressional
- Riverine
- Slope
- N/A - Uplands



D:\RPM_Korbelt_Rte\GIS\Korbelt_WetlandsRteRvrsd_Mpbk.mxd

Notes:
1. Wetlands Source: ABR, 2021
2. Coordinate System: NAD83 UTM Zone 5N



Legend

- Korbelt Route (v241018)

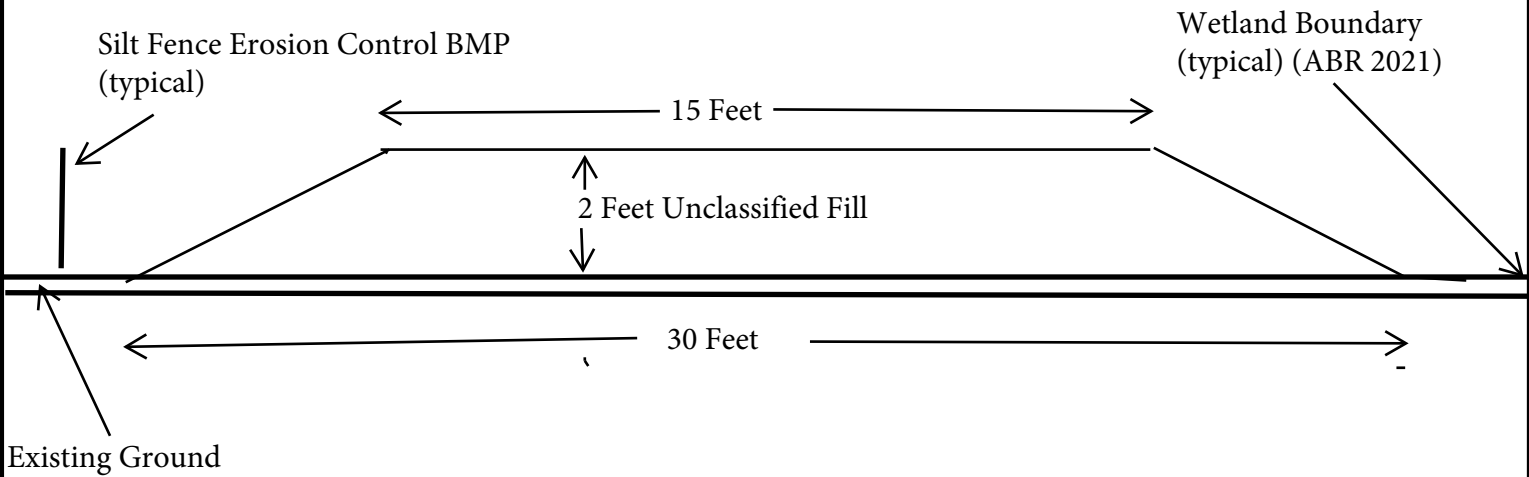
Wetlands HGM Code

- Depressional
- Riverine
- Slope
- N/A - Uplands

D:\RPM_Korbelt_Rte\GIS\Korbelt_WetlandsRte\Rvsd_Mpbk.mxd

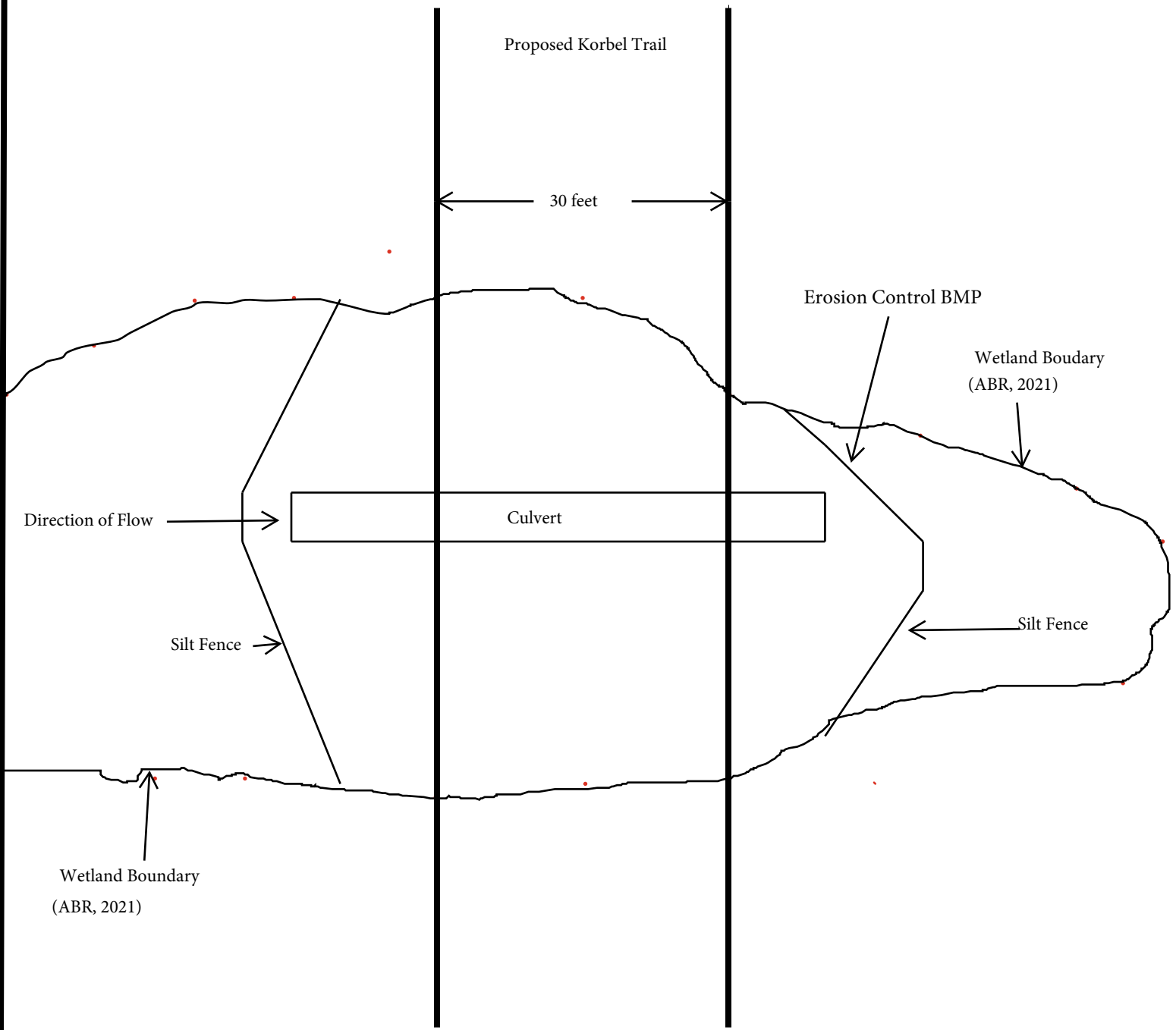
Proposed Korbel Trail Cross Section Schematic (typical)

Proposed Korbel Trail



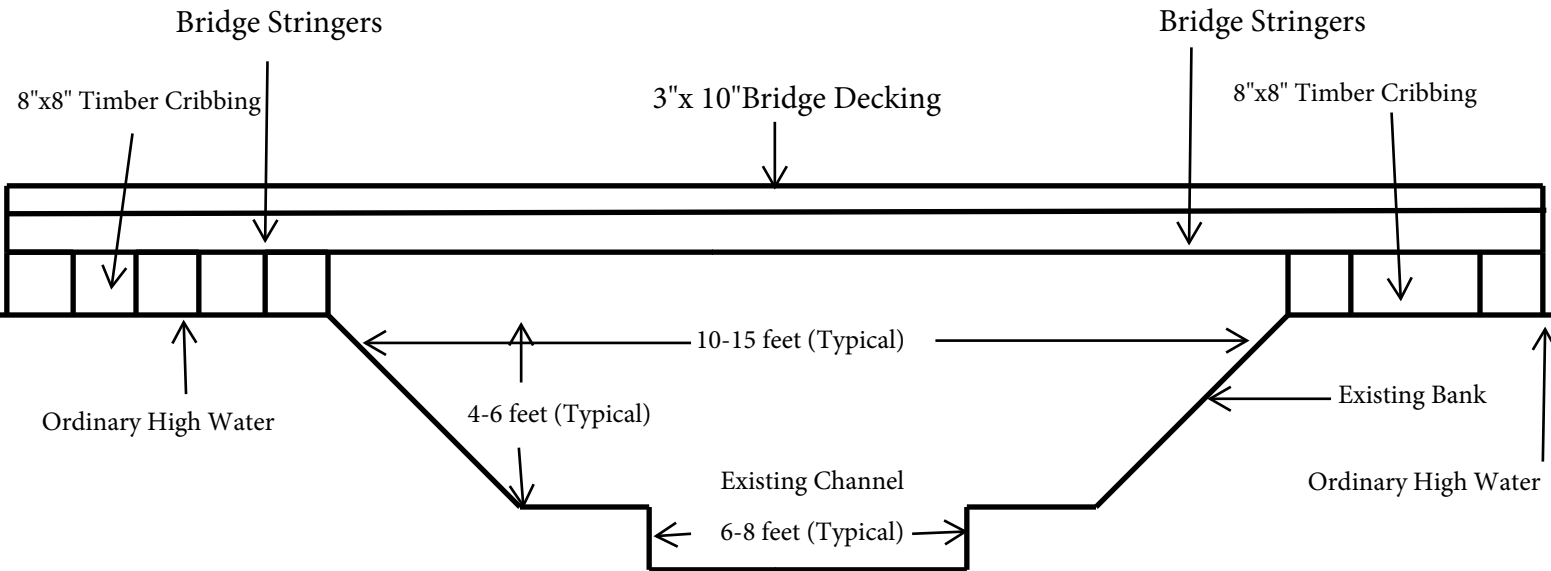
Applicant: Ak Custom Mining LLC
Waterway: Portage Creek Valley
Project: Korbel Trail
Latitude and Longitude: See Attachment A
Date: 12/12/24
Sheet X of X

Proposed Korbel Trail Plan View Schematic Wetland Crossing



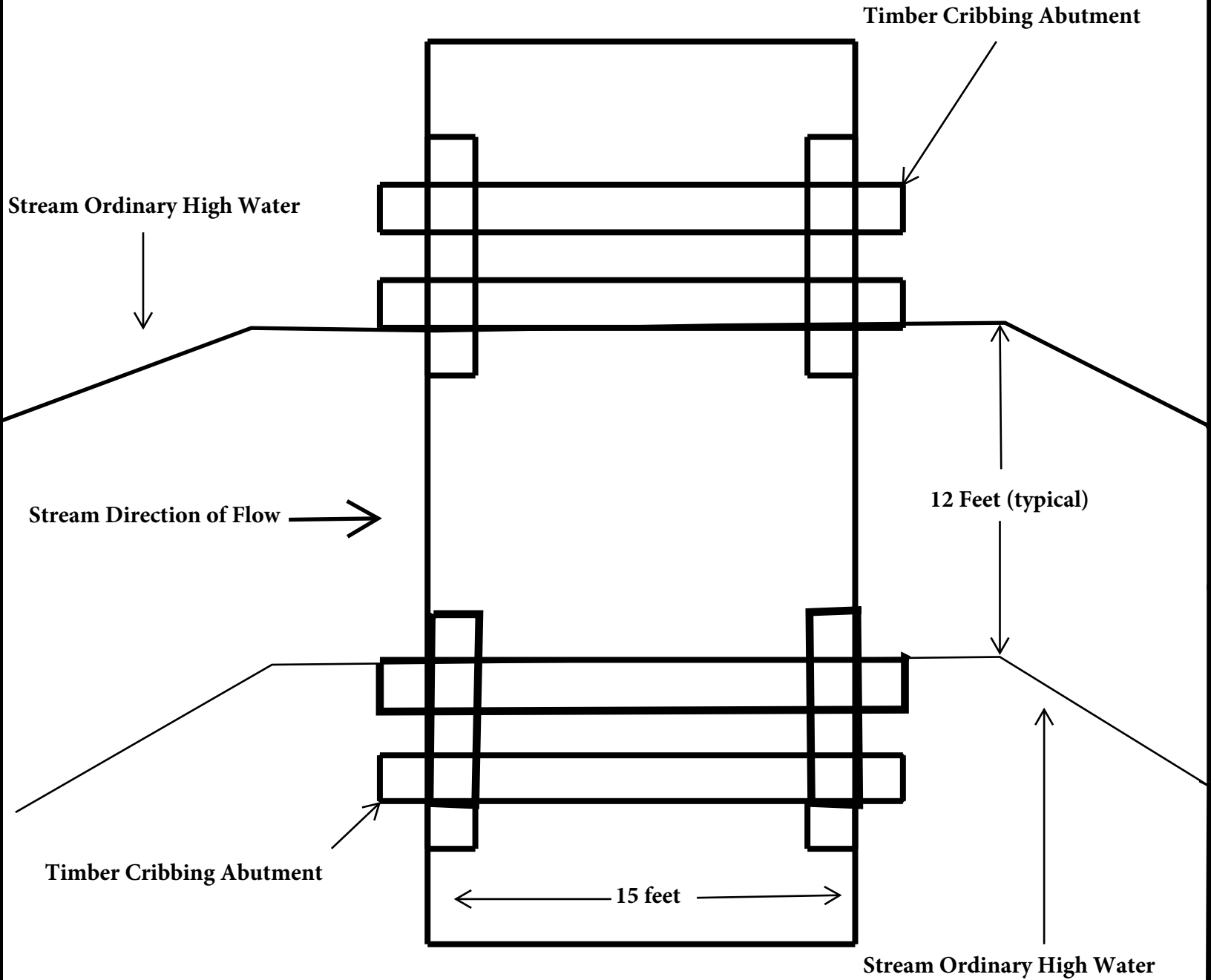
Applicant: AK Custom Mining
Waterway: Portage Creek Valley
Project: Korbel Trail
Latitude and Longitude: See Attachment A
Date: 12/12/24
Sheet 1 of X

Timber Cribbing Bridge Schematic Typical Cross Section



Applicant: Ak Custom Mining LLC
Waterway: Portage Creek Valley
Project: Korbel Trail
Latitude and Longitude: See Attachment A
Date: 12/12/24
Sheet 1 of X

Timber Cribbing Bridge Crossing Schematic Plan View



Applicant: AK Custom Mining LLC
Waterway: Portage Creek Valley
Project: Korbel Trail
Latitude and Longitude: See Attachment A
Date: 12/12/24
Sheet x of x