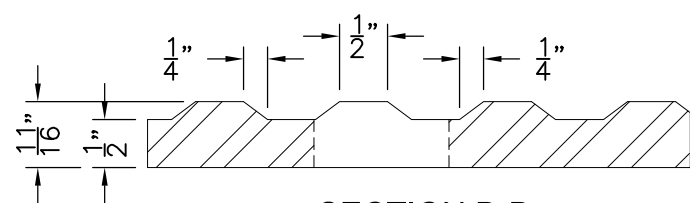
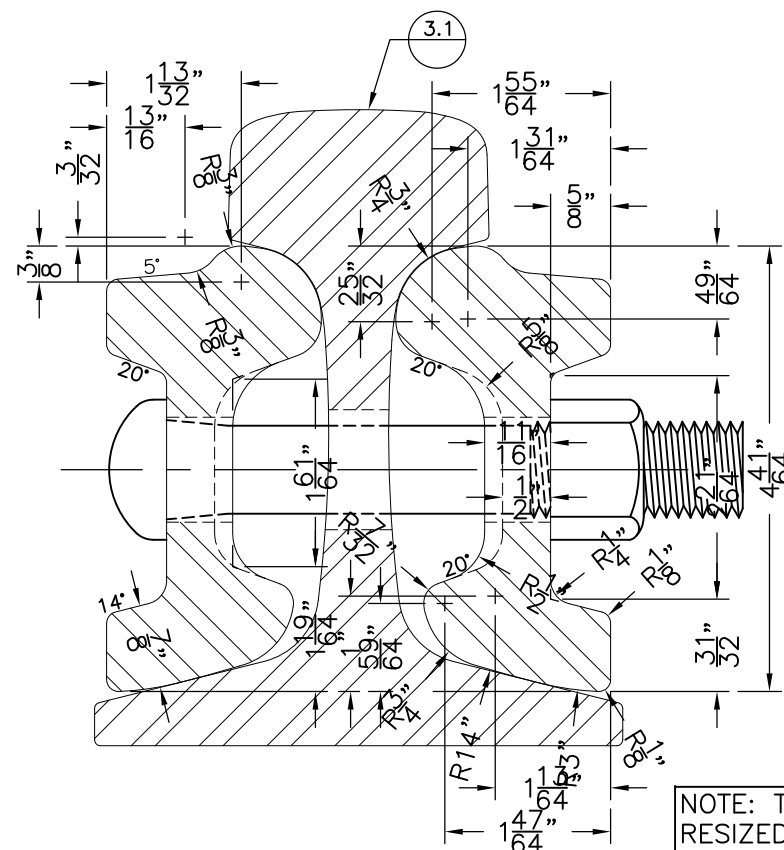


JOINT FASTENER ASSEMBLY - ELEVATION
HALF SCALE



SECTION B-B
HALF SCALE



SECTION A-A
HALF SCALE

NOTE: TEXT
RESIZED FOR
CLARITY

MATHEMATICAL PROPERTIES	
TWO BARS	
SECTION MODULUS	
ABOVE N.A.	= 10.5
SECTION MODULUS	
BELOW N.A.	= 9.6
MOMENT OF INERTIA	= 23.0
AREA (AVERAGE)	= 10.52 SQ.FT.
WEIGHT	= 70 LBS.

ALASKA RAILROAD CORPORATION OFFICE OF THE CHIEF ENGINEER P.O. BOX 107500, ANCHORAGE, ALASKA 99510-7500 (907) 265-2456		
STANDARD 24" JOINT FASTENERS FOR 115 LB. RE RAIL		
APPROVED:	DATE:	
DESIGNED BY:	SCALE: AS NOTED	FILE: s5-1.dwg
DRAWN BY: BBF	APPROVED BY: ENG DEPT	DATE: 6/02
		5.1