

**CERTIFICATE OF OWNERSHIP**

I (WE) HEREBY CERTIFY THAT I (WE) HOLD THE HEREIN SPECIFIED PROPERTY INTEREST IN THE PROPERTY SHOWN AND DESCRIBED HEREON. THERE SHALL BE RESERVED ADJACENT TO THE STREETS SHOWN HEREON A SLOPE RESERVATION EASEMENT SUFFICIENT TO CONTAIN CUT AND FILL SLOPES OF 1.5 FEET HORIZONTAL FOR EACH 1 FOOT VERTICAL (1.5 TO 1) OF CUT OR FILL FOR THE PURPOSE OF PROVIDING AND MAINTAINING THE LATERAL SUPPORT OF THE CONSTRUCTED STREETS. THERE IS RESERVED TO THE GRANTORS, THEIR HEIRS, SUCCESSORS AND ASSIGNS, THE RIGHT TO USE SUCH AREAS AT ANY TIME UPON PROVIDING AND MAINTAINING OTHER ADEQUATE LATERAL SUPPORT, AS APPROVED BY THE MUNICIPALITY.

I (WE) HEREBY AGREE TO THIS PLAT, AND TO ANY RESTRICTION OR COVENANT APPEARING HEREON AND ANY SUCH RESTRICTION OR COVENANT SHALL BE BINDING AND ENFORCEABLE AGAINST PRESENT AND SUCCESSIVE OWNERS OF THIS SUBDIVIDED PROPERTY.

**OWNER:**

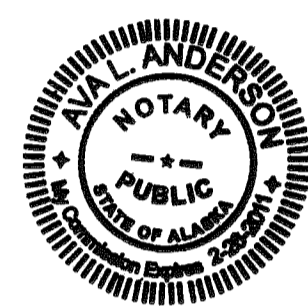
MARI E. MONTGOMERY, DIRECTOR  
UNIVERSITY OF ALASKA, LAND MANAGEMENT  
1815 BRAGAW STREET, SUITE 101  
ANCHORAGE, AK 99508

BY: *Mari E. Montgomery* Director  
SIGNATURE TITLE  
**Mari E. Montgomery**  
PRINTED NAME

**NOTARY ACKNOWLEDGMENT**

THIS IS TO CERTIFY THAT ON THIS 26 DAY OF August, 2010, BEFORE ME, THE UNDERSIGNED NOTARY PUBLIC, IN AND FOR THE STATE OF ALASKA, DULY COMMISSIONED AND SWORN AS SUCH, PERSONALLY APPEARED TO ME MARI E. MONTGOMERY, THE DIRECTOR OF THE LAND MANAGEMENT OFFICE, UNIVERSITY OF ALASKA, A CORPORATION CREATED UNDER THE CONSTITUTION AND LAWS OF THE STATE OF ALASKA, AND WHO ACKNOWLEDGED TO ME THAT SHE EXECUTED THE WITHIN AND FOREGOING DOCUMENT ON BEHALF OF SAID CORPORATION BY AUTHORITY OF ITS BOARD OF REGENTS, AS THE VOLUNTARY ACT AND DEED OF SAID CORPORATION, FOR THE USES AND PURPOSES STATED HEREIN.

*Mari E. Montgomery*  
PERSONALLY APPEARED  
*Anna L. Andrus*  
NOTARY PUBLIC  
2-26-2011  
MY COMMISSION EXPIRES



**APPROVALS**

*Thomas W. Kemp* 5-30-10  
PLATTING OFFICER DATE  
*Thomas W. Kemp* 8/27/10  
MUNICIPAL SURVEYOR DATE

**TAX CERTIFICATION**

ALL REAL PROPERTY TAXES LEVIED BY THE MUNICIPALITY OF ANCHORAGE ON THE AREA SHOWN ON THIS PLAT HAVE BEEN PAID IN FULL. IF APPROVAL IS SOUGHT BETWEEN JANUARY 1 AND THE TAX DUE DATE, THERE IS ON DEPOSIT WITH THE CHIEF FISCAL OFFICER, AMOUNTS SUFFICIENT TO PAY ESTIMATED REAL PROPERTY TAX FOR THE CURRENT YEAR.

9-2-10 *Janet Haynes*  
DATE AUTHORIZED OFFICIAL

**PLAT APPROVAL**

PLAT APPROVED BY THE MUNICIPAL PLATTING AUTHORITY THIS 27 DAY OF September, 2010.  
*Janet Haynes*  
AUTHORIZED OFFICIAL

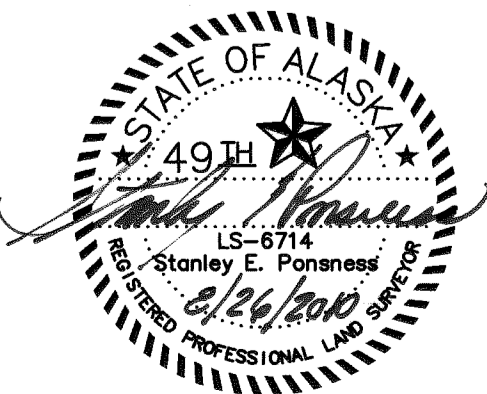
**ACCEPTANCE OF DEDICATION**

THE MUNICIPALITY OF ANCHORAGE HEREBY ACCEPTS FOR PUBLIC USES AND FOR PUBLIC PURPOSES THE REAL PROPERTY DEDICATED ON THIS PLAT, INCLUDING BUT NOT LIMITED TO THE EASEMENTS, RIGHTS OF WAY, ALLEYS, ROADWAYS, THROUGHFARES AND PARKS SHOWN HEREON.

DATED AT ANCHORAGE, ALASKA, THIS 27 DAY OF September, 2010.  
*Tom Kemp* *Janet Haynes*  
MUNICIPAL CLERK MAYOR OF ANCHORAGE

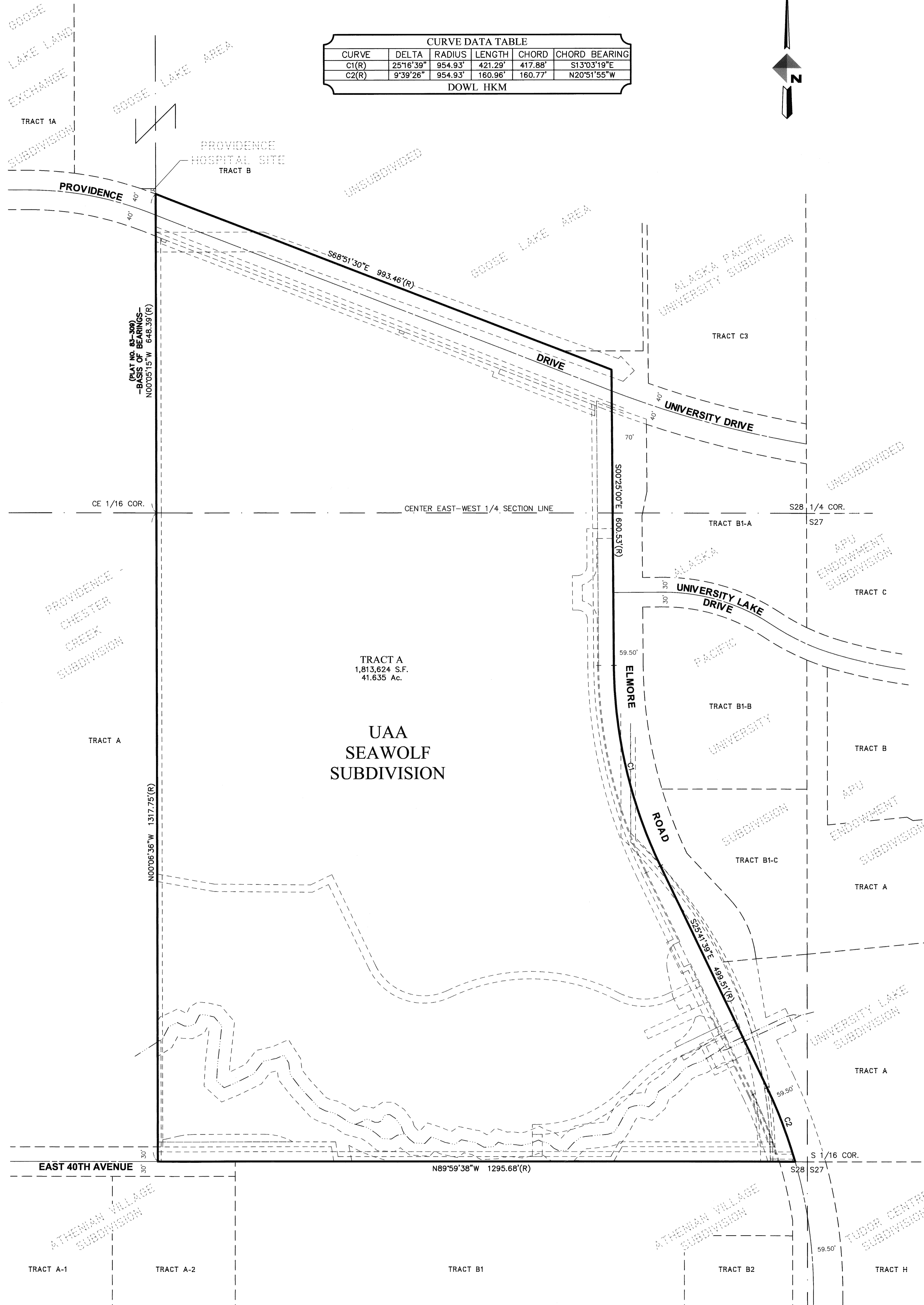
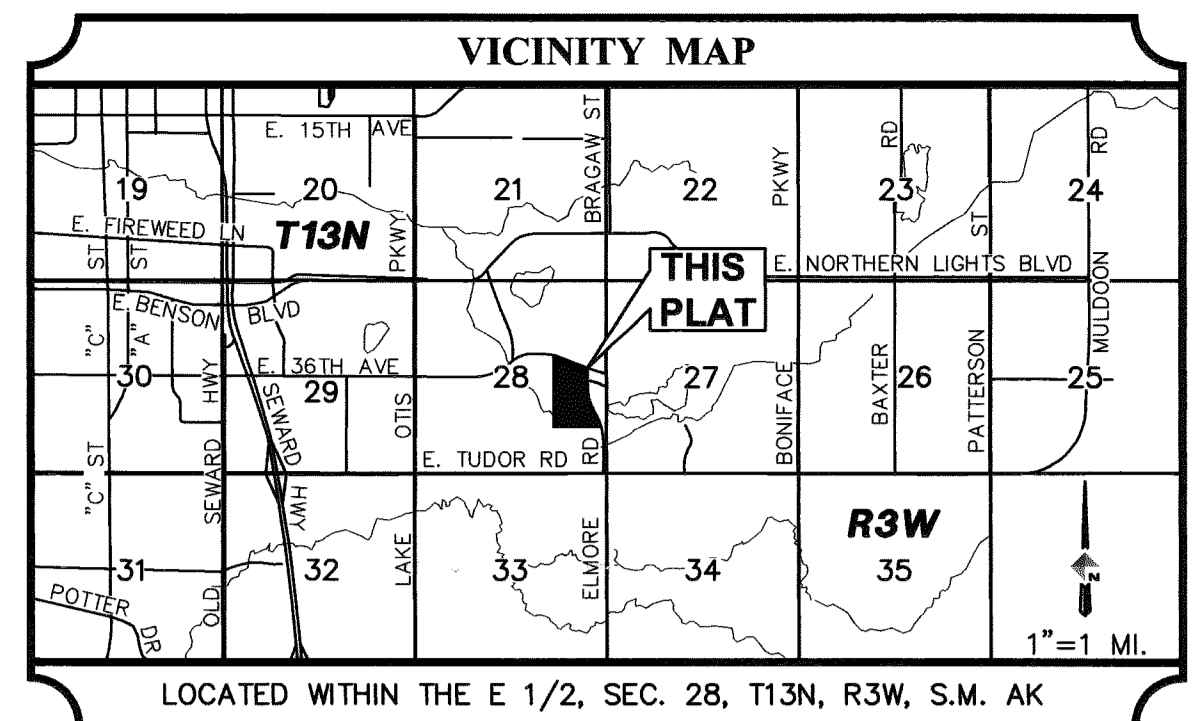
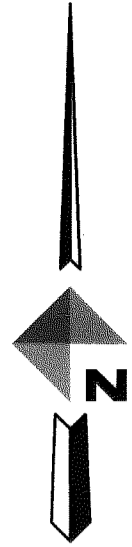
**SURVEYOR'S CERTIFICATE**

I, STANLEY E. PONSNESS, PROFESSIONAL LAND SURVEYOR, DO HEREBY CERTIFY THAT THIS IS A TRUE AND CORRECT REPRESENTATION OF LANDS ACCORDING TO THE RECORD PLAT, FILED AUGUST 19, 1983 UNDER RECORDER'S PLAT NUMBER 83-309. NO FIELD SURVEY WAS CONDUCTED FOR THIS PLAT.



CURVE DATA TABLE					
CURVE	DELTA	RADIUS	LENGTH	CHORD	CHORD BEARING
C1(R)	25°16'39"	954.93'	421.29'	417.88'	S13°03'19"E
C2(R)	9°39'26"	954.93'	160.96'	160.77'	N20°51'55"W

DOWL HKM



**NOTES**

- ALL FEDERAL AND STATE EASEMENTS/PERMITS/LICENSES REFERENCED BY CASE NUMBERS, AND ALL EASEMENTS REFERENCED BY BOOK AND PAGE NUMBERS OR SERIAL NUMBERS WERE CREATED BY DOCUMENTS, AND ARE NOT DEDICATED BY THIS PLAT. DIMENSIONS AND BOUNDARY TIES SHOWN ON THIS PLAT FOR NON-PLATTED EASEMENTS, PERMITS, AND LICENSES SHOULD ONLY BE USED FOR GENERAL INFORMATION. DOCUMENTS THAT CREATED THE EASEMENTS, PERMITS, AND LICENSES SHALL GOVERN THE LOCATION, CONTENT, AND INTENT.
- STREET RIGHT-OF-WAY WIDTHS SHOWN TO THE NEAREST FOOT REPRESENT ACTUAL DIMENSIONS TO THE NEAREST HUNDREDTH OF A FOOT (I.E. 30'=30.00').
- THE DEVELOPMENT OF THIS SUBDIVISION MAY REQUIRE THE COLLECTION AND TREATMENT OF SURFACE WATER RUNOFF. ANY SURFACE WATER RUNOFF COLLECTION AND TREATMENT SYSTEM WILL REQUIRE THE SUBMITTAL AND APPROVAL OF ENGINEERING PLANS TO THE DEPARTMENT OF ENVIRONMENTAL CONSERVATION OR ITS AUTHORIZED AGENCY.
- ALL WETLAND AREAS DEPICTED ON THIS PLAT ARE APPROXIMATE IN LOCATION (THE LOCATIONS DETERMINED FROM THE MOA WATERSHED MAPPING SERVICES (WMS) G.I.S. DATABASE).
- NO BOUNDARY SURVEY WAS CONDUCTED FOR THIS PLAT.
- PORTIONS OF THIS SUBDIVISION ARE SITUATED WITHIN THE FLOOD HAZARD DISTRICT AS IT EXISTS ON THE DATE HEREOF. THE BOUNDARIES OF THE FLOOD HAZARD DISTRICT MAY BE ALTERED FROM TIME TO TIME IN ACCORDANCE WITH THE PROVISIONS OF SECTION 21.60.020 (ANCHORAGE MUNICIPAL CODE). ALL CONSTRUCTION ACTIVITIES AND ANY LAND USE WITHIN THE FLOOD HAZARD DISTRICT SHALL CONFORM TO THE REQUIREMENTS OF CHAPTER 21.60 (ANCHORAGE MUNICIPAL CODE).
- EASEMENTS VACATED BY THIS PLAT:
  - A PORTION OF A TRAIL EASEMENT (VARIABLE IN WIDTH) DEDICATED BY PLAT NO. 83-309 LYING BETWEEN THE WESTERLY BOUNDARY OF TRACT A, THIS PLAT AND THE EXTENSION OF THE WESTERLY BOUNDARY OF TRAIL EASEMENT NO. 2 OF THE "RELOCATABLE EASEMENT, UAA SPUR TRAIL - SEGMENT 1 OF 5", FILED UNDER SERIAL NUMBER 2008-052832-0 IN THE ANCHORAGE RECORDING DISTRICT, THIRD JUDICIAL DISTRICT, STATE OF ALASKA. SEE DETAIL "I", SHEET 3.
  - A CURVED 10' IN WIDTH UNDERGROUND UTILITY EASEMENT DEDICATED BY PLAT NO. 83-309.
- THAT PORTION OF THE TRAIL EASEMENT DEDICATED BY PLAT NO. 83-309 THAT IS BEING RETAINED IS A 20-FOOT WIDE STRIP WITH THE CENTERLINE PARALLEL TO AND 40 FEET NORTH OF THE "STREAM THREAD MEANDER LINE" SHOWN ON PLAT NO. 83-309 AND THIS PLAT.
- ALL STREAMS AND CHANNELS DEPICTED ON THIS PLAT ARE APPROXIMATE IN LOCATION (THE LOCATIONS DETERMINED FROM THE MOA WATERSHED MAPPING SERVICES (WMS) G.I.S. DATABASE). A STREAM PROTECTION SETBACK SHALL BE A MINIMUM OF 25 FEET WIDE ON EITHER SIDE OF THE STREAM, MEASURED LANDWARD FROM THE EDGE OF THE BED OF THE STREAM, IDENTIFIED BY THE ORDINARY HIGH-WATER MARK, PROVIDED THAT ALL STREAM PROTECTION SETBACKS ALONG STREAMS LESS THAN FIVE FEET WIDE AT ORDINARY HIGH WATER SHALL BE 25 FEET WIDE, ON EITHER SIDE OF THE THREAD OF THE STREAM, AS DEFINED IN AMC 21.45.210. IT IS UNDERSTOOD THAT THE CHESTER CREEK MAY MOVE OVER TIME AND VARIES IN WIDTH BETWEEN FIVE AND TEN FEET. IT IS ALSO UNDERSTOOD THAT THE 25 FOOT STREAM PROTECTION SETBACK EASEMENT WILL ALSO VARY OVER TIME, FOLLOWING THE MOVEMENT OF THE CHESTER CREEK. ANY DEVELOPMENT ADJACENT TO THE SHOWN STREAMS/CHANNELS SHALL FIELD LOCATE THE CHESTER CREEK AND REFLECT THE CODE REQUIRED SETBACKS PRIOR TO ISSUANCE OF ANY DEVELOPMENT RELATED PERMITS.
- AUTHORIZATION FROM THE U.S. CORPS OF ENGINEERS, REGULATORY BRANCH IS REQUIRED PRIOR TO ANY ALTERATION OF OR WORK WITHIN STREAMS, PONDS OR WETLANDS. ACTIVITIES REQUIRING AUTHORIZATION INCLUDE, BUT ARE NOT LIMITED TO CLEARING, GRUBBING, EXCAVATION, GRADING OR PLACEMENT OF FILL.
- PORTIONS OF THIS SUBDIVISION ARE SITUATED WITHIN THE FLOOD HAZARD DISTRICT AS IT EXISTS ON THE DATE HEREOF. THE BOUNDARIES OF THE FLOOD HAZARD DISTRICT MAY BE ALTERED FROM TIME TO TIME IN ACCORDANCE WITH THE PROVISIONS OF SECTION 21.04.080.D.4 (ANCHORAGE MUNICIPAL CODE). ALL CONSTRUCTION ACTIVITIES AND ANY LAND USE WITHIN THE FLOOD HAZARD DISTRICT SHALL CONFORM TO THE REQUIREMENTS OF CHAPTER 21.04.080.D (ANCHORAGE MUNICIPAL CODE).

**LEGEND**

- (R) RECORD INFORMATION PER PLAT NO. 83-309.
- CL CENTERLINE
- (NR) NON-RADIAL
- T&E TELECOMMUNICATIONS AND ELECTRIC
- U/G UNDERGROUND

PLAT OF  
**UAA SEAWOLF SUBDIVISION**  
COMPRISING OF TRACT A  
(WITH EASEMENT VACATIONS)  
AND WITH VACATION RESOLUTION No. 2009-007  
A 41.635 ACRE RESUBDIVISION OF  
ALASKA PACIFIC UNIVERSITY SUBDIVISION, TRACT A  
PER PLAT NO. 83-309.

ANCHORAGE RECORDING DISTRICT,  
THIRD JUDICIAL DISTRICT, STATE OF ALASKA.

LOCATED WITHIN  
THE S1/2 OF THE NE1/4, & THE N1/2 OF THE SE1/4  
OF SECTION 28, T13N, R3W, S.M. AK

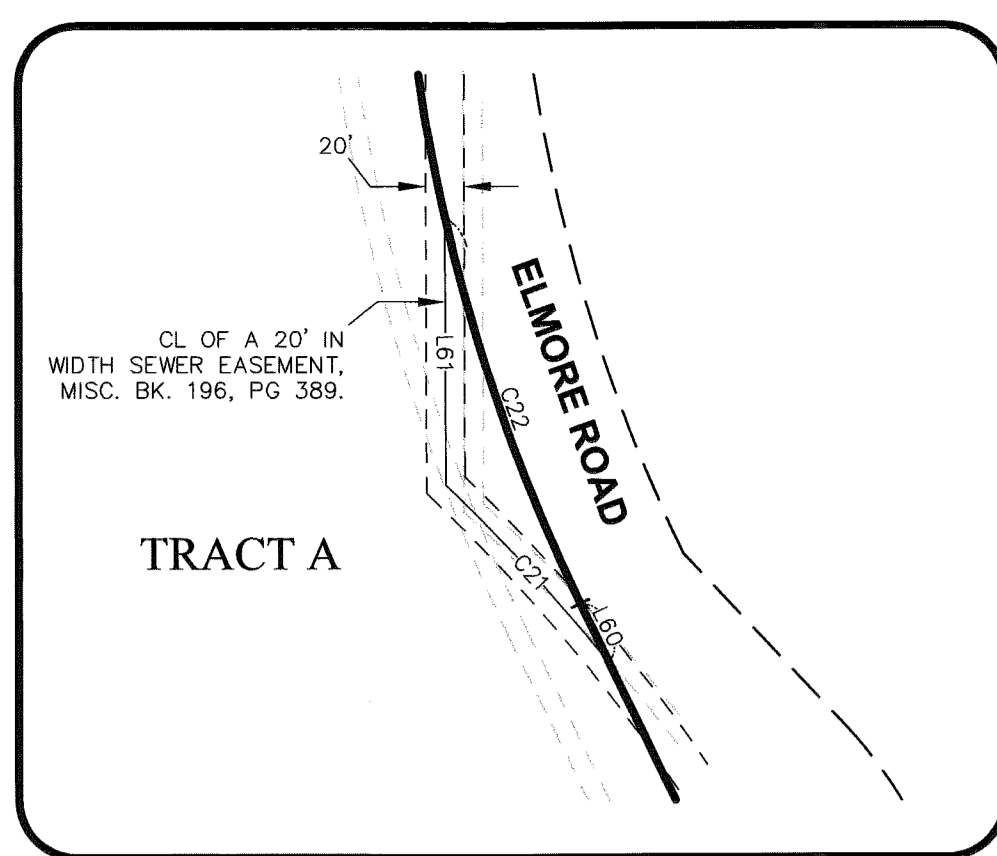


4041 B STREET, ANCHORAGE, ALASKA 99503 PH: (907) 562-2000 FAX (907) 563-3953

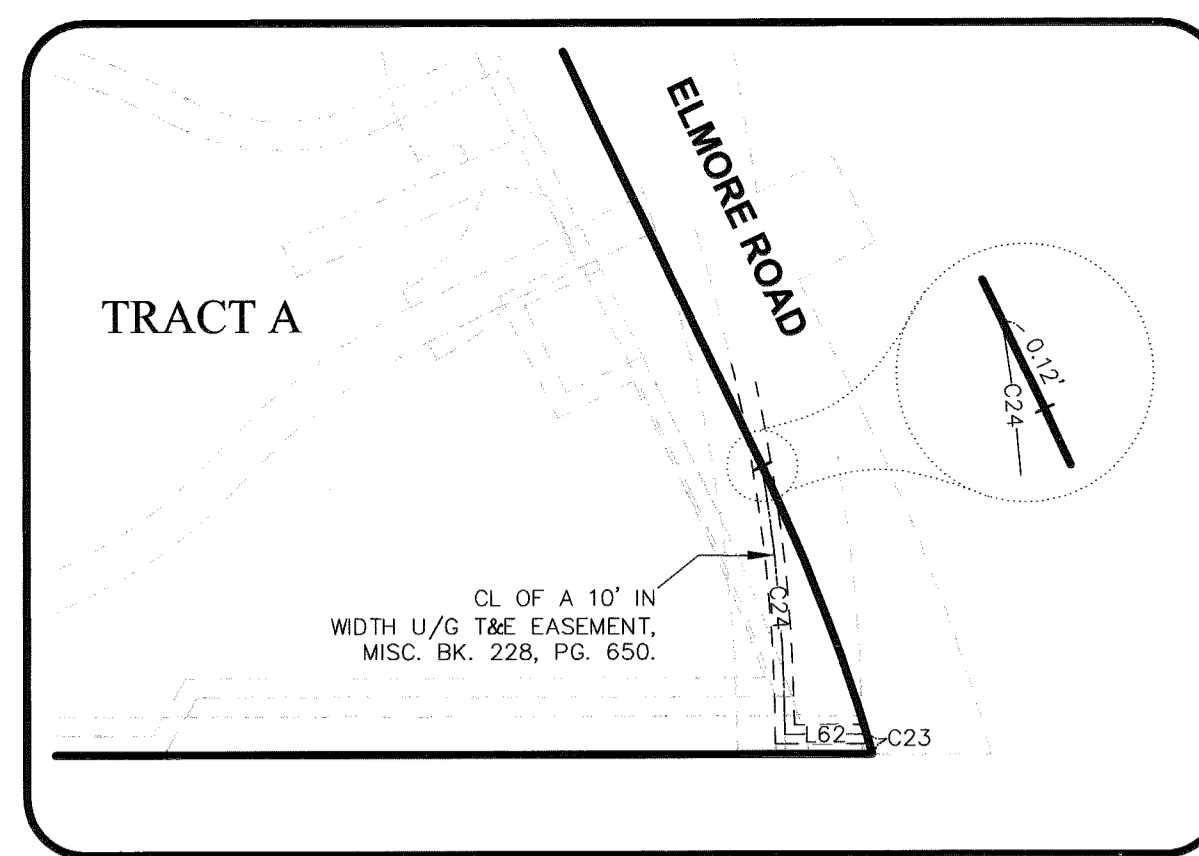
DRAWN BY: KET	DATE OF DRAWING: AUG-19-2010	CHECKED BY: KET
SCALE: 1"=100'	DATE OF SURVEY: N/A	FBK: N/A
W.O: 1132.60241	CERT/PLAT: PNT NO. 00089805	GRID: SW1635/SW1735
<b>DOWL HKM FILE No: 149-97</b>	M.O.A. CASE FILE NO: S-11747-1	<b>SHEET 1 OF 4</b>

CURVE DATA TABLE FOR DOCUMENT EASEMENTS					
CURVE	DELTA	RADIUS	LENGTH	CHORD	CHORD BEARING
TRAIL EASEMENT NO. 1					
C3	04°44'09"	75.00'	6.20'	6.20'	N79°15'35"E
C4	13°07'34"	115.00'	26.35'	26.29'	S83°27'18"W
C5	29°49'27"	115.00'	59.86'	59.19'	N75°04'11"W
TRAIL EASEMENT NO. 2					
C6	02°44'31"	270.00'	12.92'	12.92'	N88°38'07"E
TRAIL EASEMENT NO. 3					
C7	47°00'29"	63.67'	52.24'	50.78'	S13°59'06"W
TRAIL EASEMENT NO. 4					
C8	00°38'34"	350.00'	3.93'	3.93'	S63°59'04"W
C9	48°48'54"	80.00'	68.16'	66.12'	N39°09'13"E
TRAIL EASEMENT NO. 5					
C10	23°17'11"	120.00'	48.77'	48.44'	S51°53'40"W
C11	00°37'57"	330.00'	3.64'	3.64'	N63°59'22"E
PUBLIC HIGHWAY EASEMENT					
C12	09°06'14"	923.93'	146.81'	146.65'	N21°08'32"W
C13	25°16'39"	985.93'	434.97'	431.45'	S13°03'20"E
C14	00°25'20"	2030.00'	14.96'	14.96'	S69°04'10"E
PUBLIC TRANSIT, WALKWAYS, & TRAIL EASEMENT					
C15 (T/E)	01°57'06"	923.93'	31.47'	31.47'	N17°33'57"W
C16	07°09'09"	923.93'	115.34'	115.26'	N22°07'05"W
C17	06°59'04"	915.93'	111.65'	111.58'	S22°12'07"E
40' IN WIDTH GAS EASEMENT					
C18 (CL)	05°11'57"	950.00'	86.21'	86.18'	N02°35'37"W
C19 (T/E)	04°12'00"	954.93'	70.00'	69.99'	N23°35'39"W
20' IN WIDTH SEWER EASEMENT					
C20 (CL)	12°56'19"	915.00'	206.63'	206.19'	N06°27'47"W
C21 (CL)	07°54'14"	915.00'	126.22'	126.12'	N42°24'28"W
C22 (T/E)	12°46'56"	954.93'	213.04'	212.60'	N19°18'11"W
10' IN WIDTH U/G T&E EASEMENT					
C23 (T/E)	00°38'47"	954.93'	10.77'	10.77'	N16°21'35"W
C24 (CL)	09°13'31"	872.63'	140.50'	140.35'	N04°42'43"W
C25 (CL)	05°41'51"	866.92'	86.20'	86.17'	N44°51'37"W
C26 (T/E)	09°18'09"	954.93'	155.04'	154.87'	S21°02'35"E

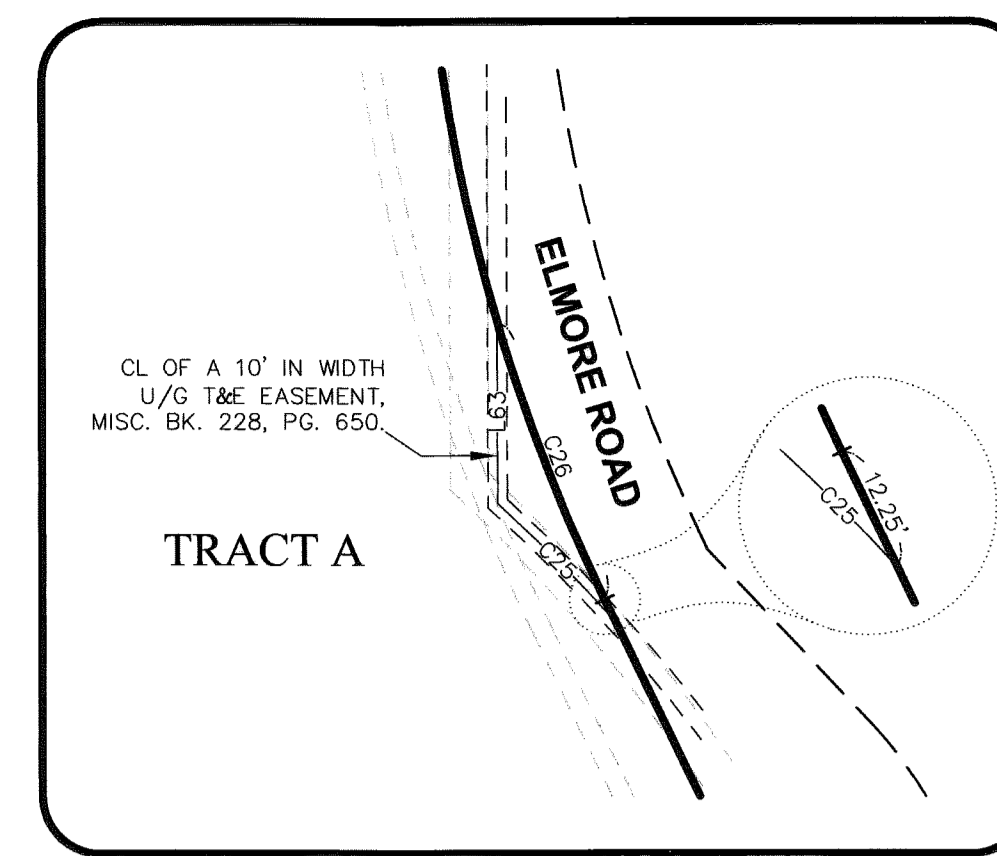
DOWL HKM



DETAIL 'D'  
SCALE: 1"=100'



DETAIL 'E'  
SCALE: 1"=100'

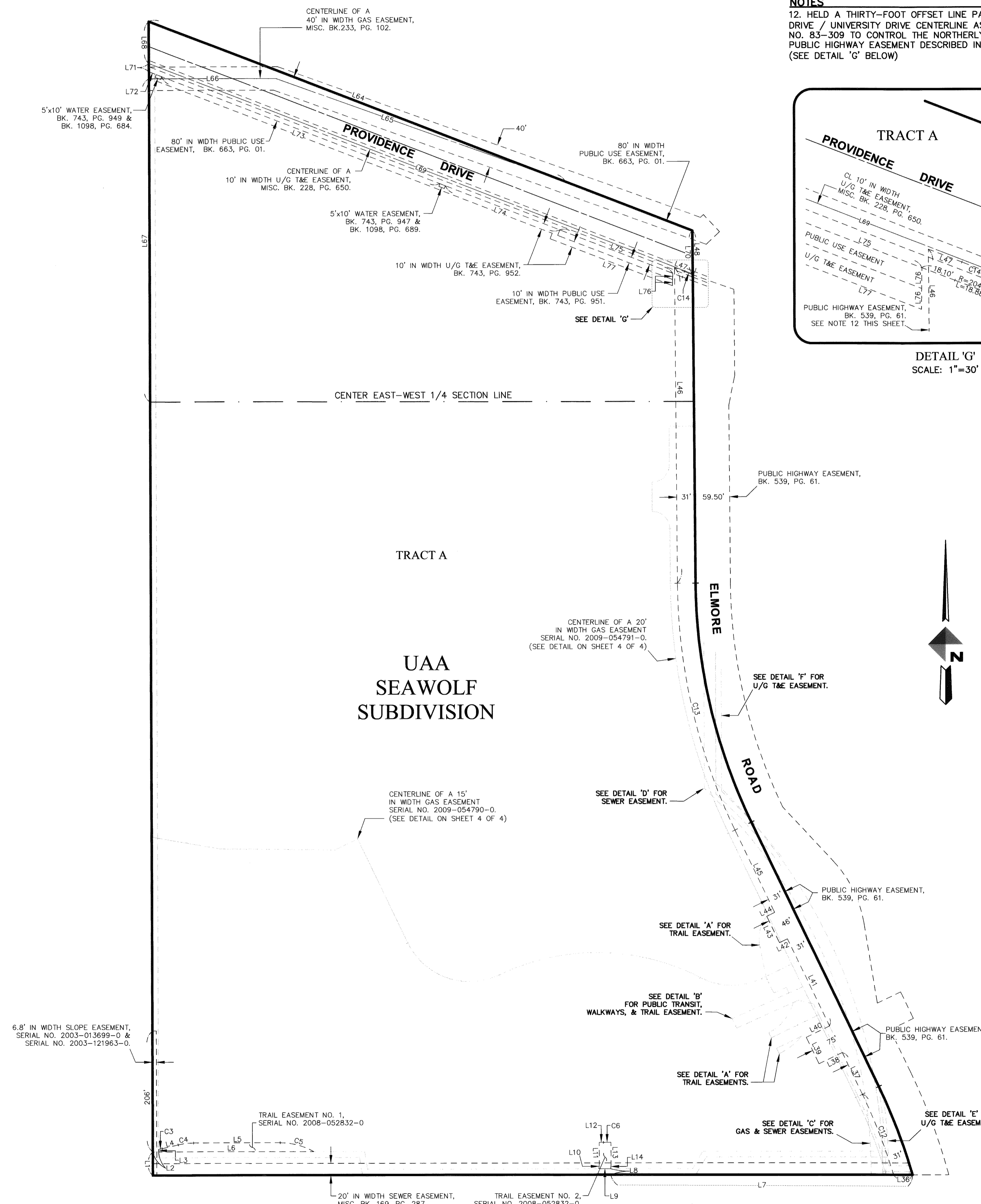


DETAIL 'F'  
SCALE: 1"=100'

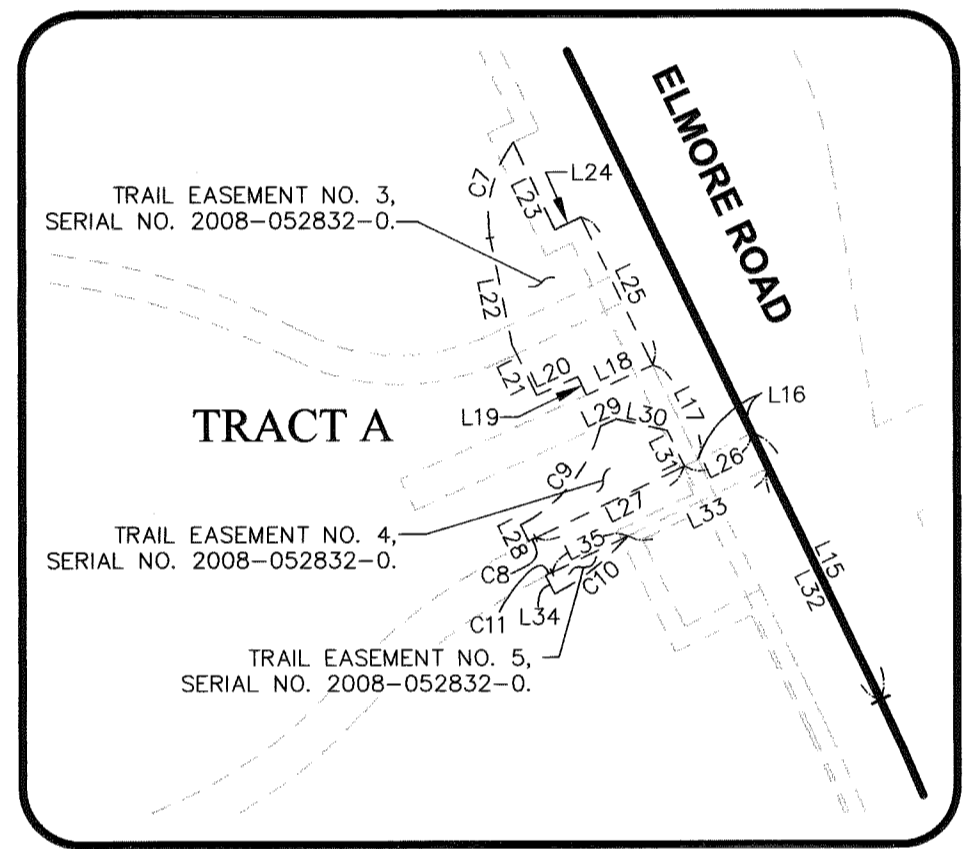
LINE DATA TABLE FOR DOCUMENT EASEMENTS		
LINE	BEARING	LENGTH
TRAIL EASEMENT NO. 1		
L1 (T/E)	N00°06'36"W	40.00'
L2 (T/E)	S89°59'38"E	10.00'
L3	N00°06'16"W	4.73'
L4	N76°53'31"E	28.17'
L5	S89°58'55"E	147.89'
L6	N89°59'38"W	264.71'
TRAIL EASEMENT NO. 2		
L7 (T/E)	N89°59'38"W	514.48'
L8 (T/E)	N00°00'00"E	10.00'
L9	N89°59'38"W	20.04'
L10	N03°51'12"E	8.51'
L11	N00°10'37"W	36.50'
L12	S89°59'38"E	7.08'
L13	N00°10'37"W	37.45'
L14	N03°51'12"E	7.87'
TRAIL EASEMENT NO. 3		
L15 (T/E)	S25°41'39"E	153.94'
L16 (T/E)	S64°18'21"W	31.00'
L17 (T/E)	N25°41'39"W	54.49'
L18	S65°44'31"W	37.84'
L19	N24°26'57"W	10.56'
L20	S65°33'03"W	23.51'
L21	N26°12'40"W	29.27'
L22	N11°30'27"W	56.87'
L23	S25°41'39"E	50.00'
L24	N64°18'21"E	15.00'
L25	S25°41'39"E	85.51'
TRAIL EASEMENT NO. 4		
L26 (T/E)	S64°18'21"W	39.00'
L27	S64°18'21"W	86.00'
L28	N26°27'45"W	9.61'
L29	N65°44'31"E	9.08'
L30	S77°13'18"E	26.99'
L31	S25°41'39"E	20.67'
TRAIL EASEMENT NO. 5		
L32 (T/E)	N25°41'39"W	133.94'
L33 (T/E)	S64°18'21"W	81.20'
L34	N26°27'45"W	10.39'
L35	N64°18'21"E	43.80'
PUBLIC HIGHWAY EASEMENT		
L36 (T/E)	N89°59'38"W	32.30'
L37	S25°41'39"E	78.94'
L38	N64°18'21"E	44.00'
L39	N25°41'39"W	50.00'
L40	N64°18'21"E	44.00'
L41	S25°41'39"E	165.00'
L42	N64°18'21"E	15.00'
L43	N25°41'39"W	50.00'
L44	N64°18'21"E	15.00'
L45	S25°41'39"E	155.57'
L46 (C)	S00°25'00"W	537.53'
L47	S68°51'30"E	18.35'
L48 (T/E)	N00°25'00"W	75.21'
PUBLIC TRANSIT, WALKWAYS, & TRAIL EASEMENT		
L49 (T/E)	N89°59'38"W	32.30'
L50	N25°41'39"W	208.43'
L51	S65°44'31"W	144.01'
L52	S25°41'39"E	17.76'
L53	N65°44'31"E	114.87'
L54	S77°13'18"E	26.99'
L55	S25°41'39"E	174.61'
L56	S89°59'38"E	8.44'
40' IN WIDTH GAS EASEMENT		
L57 (T/E)	N89°59'38"W	25.35'
20' IN WIDTH SEWER EASEMENT		
L58 (T/E)	N89°59'38"W	35.00'
L59 (T/E)	S25°41'39"E	60.65'
L60 (T/E)	S25°41'39"E	34.61'
L61 (CL)	N00°05'38"W	138.71'
10' IN WIDTH U/G T&E EASEMENT		
L62 (CL)	N89°58'52"W	42.70'
L63 (CL)	N00°05'00"W	94.50'
40' IN WIDTH GAS EASEMENT		
L64 (T/E)	S68°51'30"E	761.10'
L65 (CL)	N70°18'57"W	523.98'
L66 (CL)	N89°55'57"W	216.35'
L67 (T/E)	S00°05'15"E	550.63'
10' IN WIDTH U/G T&E EASEMENT		
L68 (T/E)	S00°05'15"E	71.80'
L69 (CL)	S68°45'00"E	994.66'
L70 (T/E)	N00°25'00"W	73.98'
5'x10' WATER EASEMENTS		
L71 (T/E)	S00°05'15"E	14.02'
L72 (T/E)	S68°51'30"E	13.35'
L73 (T/E)	S68°51'30"E	508.60'
10' IN WIDTH PUBLIC USE EASEMENT		
L74 (T/E)	S68°51'30"E	209.02'
L75	S68°51'30"E	206.00'
L76	S00°33'09"W	10.68'
10' IN WIDTH T&E EASEMENT		
L76	S00°33'09"W	10.68'
L77	N68°51'30"W	223.51'

DOWL HKM

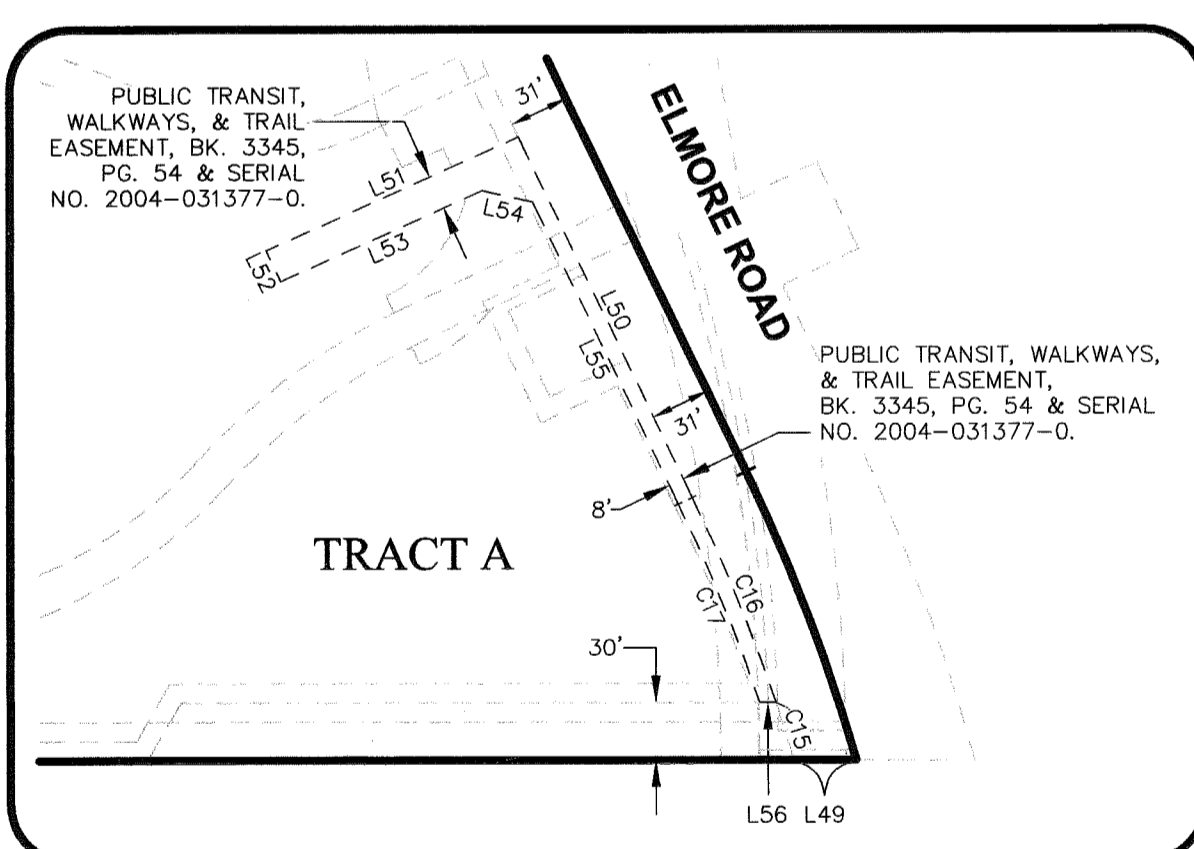
**NOTES**  
12. HOLD A THIRTY-FOOT OFFSET LINE PARALLEL WITH PROVIDENCE DRIVE / UNIVERSITY DRIVE CENTERLINE AS COMPUTED FROM PLAT NO. 83-309 TO CONTROL THE NORTHERLY BOUNDARY LINE OF THE PUBLIC HIGHWAY EASEMENT DESCRIBED IN BOOK 539, PAGE 61. (SEE DETAIL 'C' BELOW)



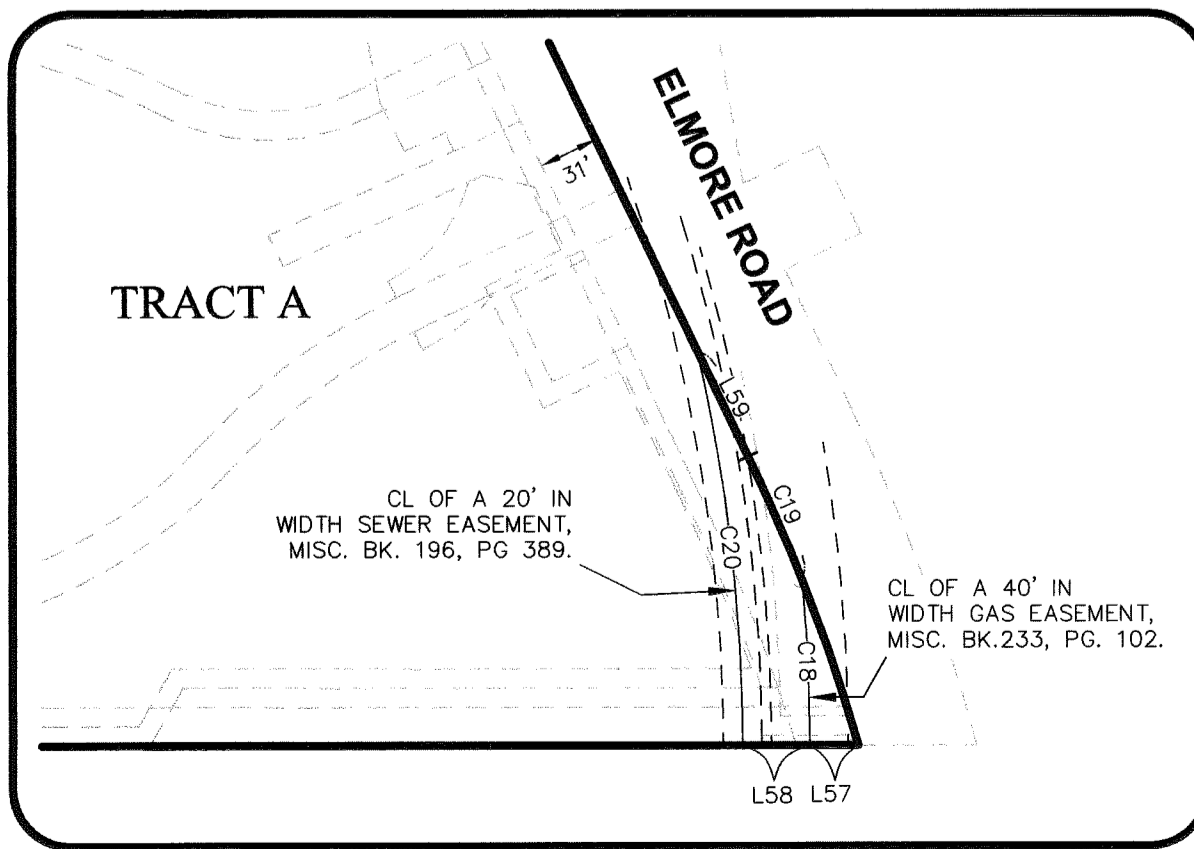
DOCUMENT EASEMENT DETAILS  
SCALE: 1"=100'



DETAIL 'A'  
SCALE: 1"=100'



DETAIL 'B'  
SCALE: 1"=100'

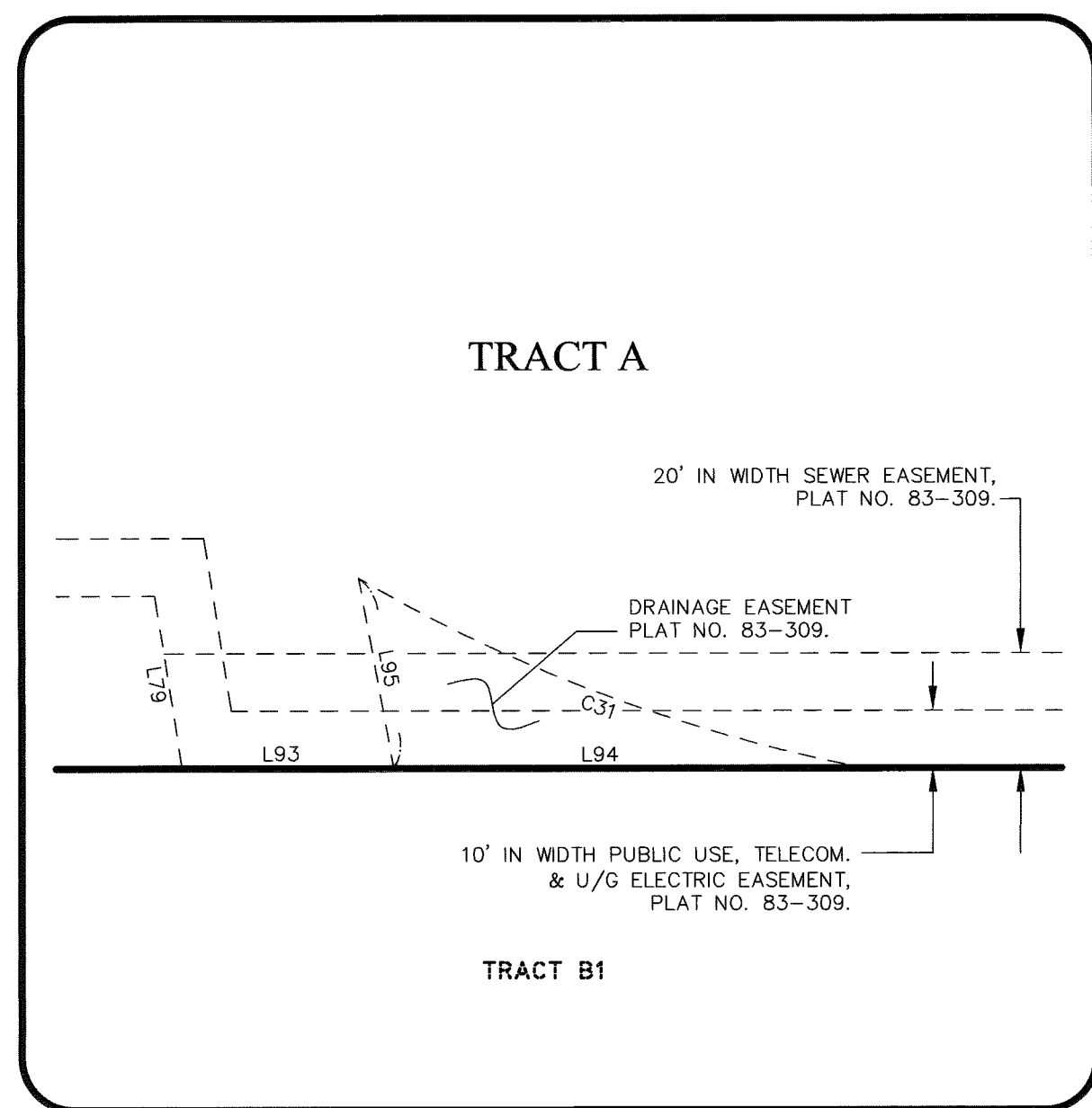


DETAIL 'C'  
SCALE: 1"=100'

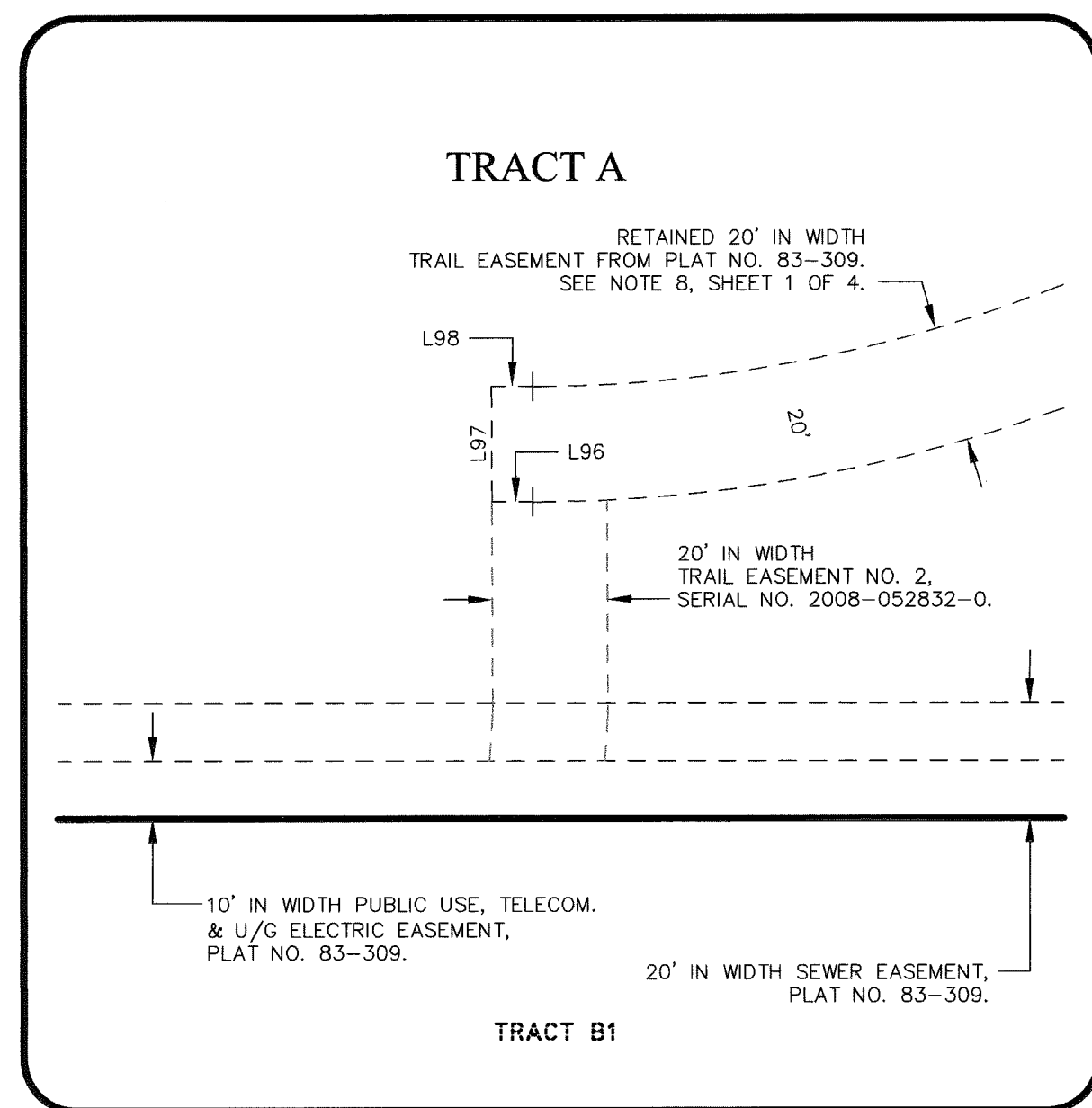
PLAT OF  
**UAA SEAWOLF SUBDIVISION**  
COMPRISING OF TRACT A  
(WITH EASEMENT VACATIONS)  
AND WITH A Vacation Reservation No. 2009-007  
A 41.635 ACRE RESUBDIVISION OF  
ALASKA PACIFIC UNIVERSITY SUBDIVISION, TRACT A  
PER PLAT NO. 83-309.  
ANCHORAGE RECORDING DISTRICT,  
THIRD JUDICIAL DISTRICT, STATE OF ALASKA.  
LOCATED WITHIN  
THE S1/2 OF THE NE1/4, & THE N1/2 OF THE SE1/4  
OF SECTION 28, T13N, R3W, S.M. AK

DOWL HKM		
4041 B STREET, ANCHORAGE, ALASKA 99503 PH: (907) 562-2000 FAX: (907) 563-3963		
DRAWN BY: KET	DATE OF DRAWING: AUG-19-2010	CHECKED BY: KET
SCALE: 1"=100'	DATE OF SURVEY: N/A	FBK: N/A
W.O: 1132.60241	CERT/PLAT: PNT NO. 00089805	GRID: SW1636/SW1735
DOWL HKM FILE	No: 149-97	SHEET 2 OF 4
M.O.A. CASE FILE NO: S-11747-1		

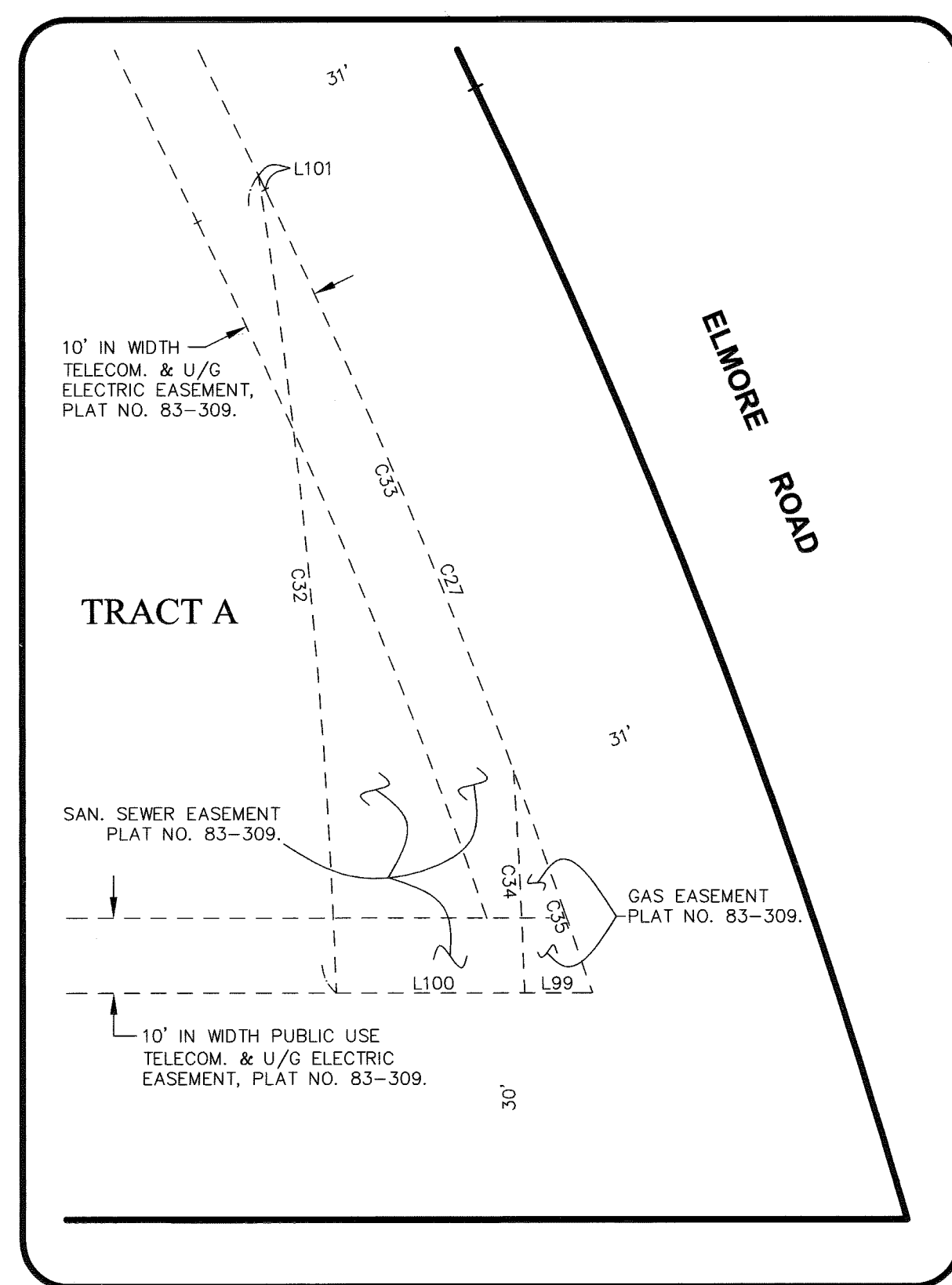
Anchorage Recording District PL 2010-58



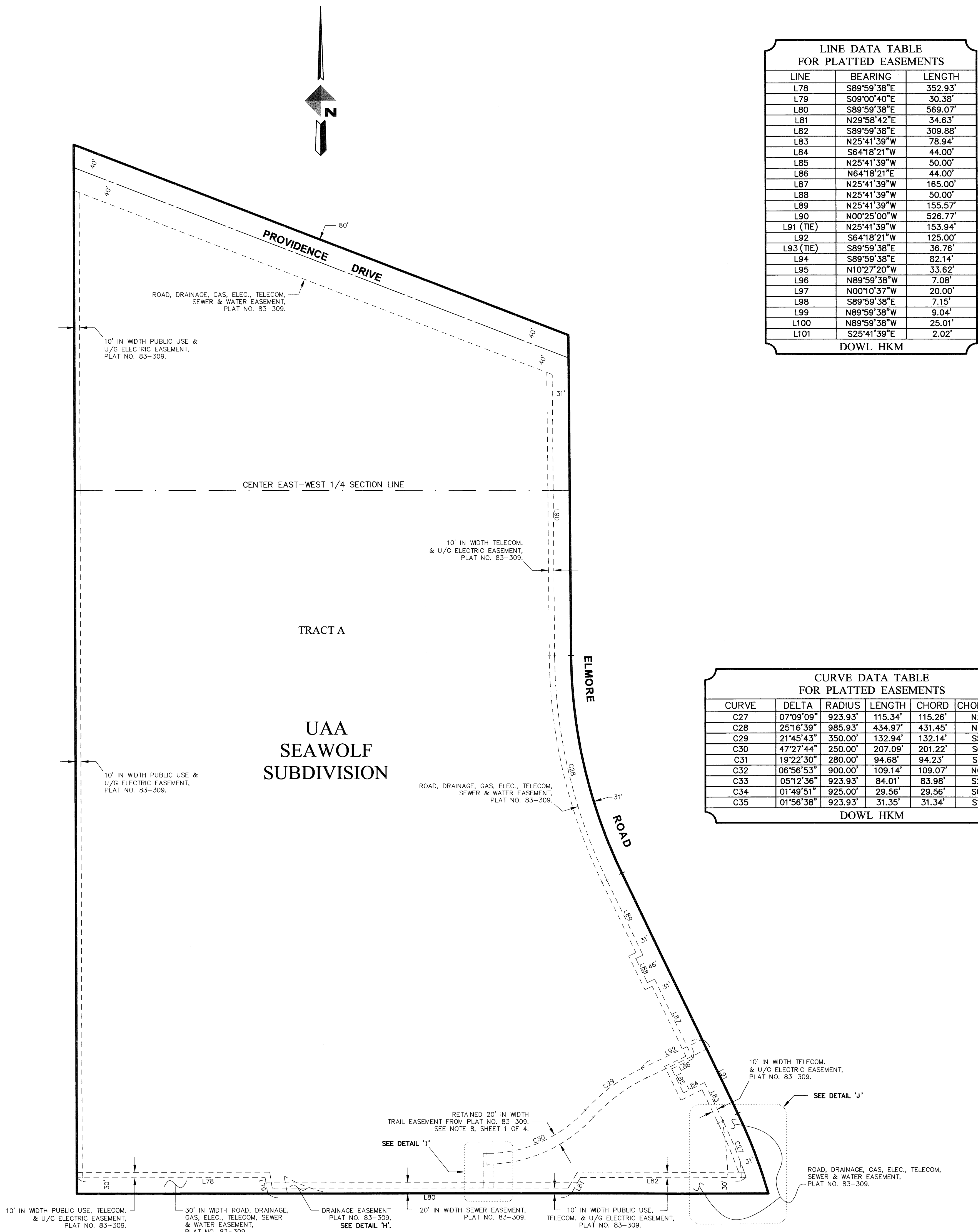
DETAIL 'H'  
SCALE: 1"=30'



DETAIL 'I'  
SCALE: 1"=30'



DETAIL 'J'  
SCALE: 1"=20'



LINE DATA TABLE  
FOR PLATTED EASEMENTS

LINE	BEARING	LENGTH
L78	S89°59'38"E	352.93'
L79	S09°00'40"E	30.38'
L80	S89°59'38"E	569.07'
L81	N29°58'42"E	34.63'
L82	S89°59'38"E	309.88'
L83	N25°41'39"W	78.94'
L84	S64°18'21"W	44.00'
L85	N25°41'39"W	50.00'
L86	N64°18'21"E	44.00'
L87	N25°41'39"W	165.00'
L88	N25°41'39"W	50.00'
L89	N25°41'39"W	155.57'
L90	N00°23'00"W	526.77'
L91 (TIE)	N25°41'39"W	153.94'
L92	S64°18'21"W	125.00'
L93 (TIE)	S89°59'38"E	36.76'
L94	S89°59'38"E	82.14'
L95	N10°27'20"W	33.62'
L96	N89°59'38"W	7.08'
L97	N00°10'37"W	20.00'
L98	S89°59'38"E	7.15'
L99	N89°59'38"W	9.04'
L100	N89°59'38"W	25.01'
L101	S25°41'39"E	2.02'

DOWL HKM

CURVE DATA TABLE  
FOR PLATTED EASEMENTS

CURVE	DELTA	RADIUS	LENGTH	CHORD	CHORD BEARING
C27	07°09'09"	923.93'	115.34'	115.26'	N22°07'05"W
C28	25°16'39"	985.93'	434.97'	431.45'	N13°03'20"W
C29	21°45'43"	350.00'	132.94'	132.14'	S53°25'30"W
C30	47°27'44"	250.00'	207.09'	201.22'	S66°16'30"W
C31	19°22'30"	280.00'	94.68'	94.23'	S69°27'18"E
C32	06°56'53"	900.00'	109.14'	109.07'	N05°22'41"W
C33	05°12'36"	923.93'	84.01'	83.98'	S23°05'21"E
C34	01°49'51"	925.00'	29.56'	29.56'	S02°46'04"E
C35	01°56'38"	923.93'	31.35'	31.34'	S19°30'49"E

DOWL HKM

PLATTED EASEMENT DETAILS  
SCALE: 1"=100'

PLAT OF  
**UAA SEAWOLF SUBDIVISION**  
COMPRISING OF TRACT A  
(WITH EASEMENT VACATIONS)  
AND WITH VACATION RESOLUTION No. 2009-007  
A 41.635 ACRE RESUBDIVISION OF  
ALASKA PACIFIC UNIVERSITY SUBDIVISION, TRACT A  
PER PLAT NO. 83-309.

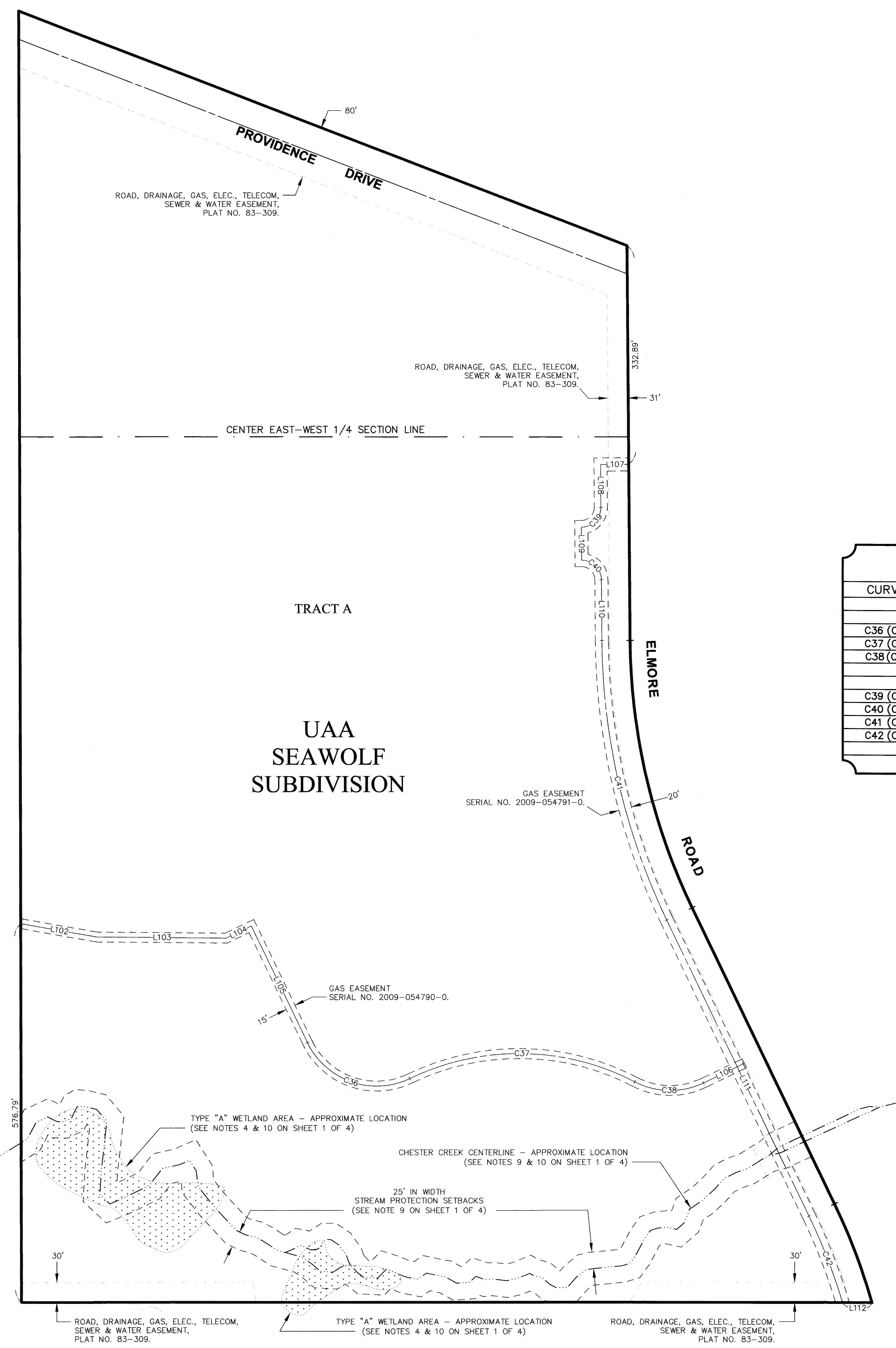
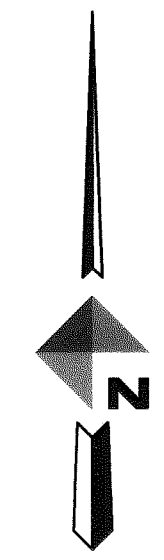
ANCHORAGE RECORDING DISTRICT,  
THIRD JUDICIAL DISTRICT, STATE OF ALASKA.

LOCATED WITHIN  
THE S1/2 OF THE NE1/4, & THE N1/2 OF THE SE1/4  
OF SECTION 28, T13N, R3W, S.M. AK

**DOWL HKM**  
4041 B STREET, ANCHORAGE, ALASKA 99503 PH: (907) 562-2000 FAX: (907) 563-3953

DRAWN BY: KET	DATE OF DRAWING: AUG-19-2010	CHECKED BY: KET
SCALE: 1"=100'	DATE OF SURVEY: N/A	FBK: N/A
W.O: 1132.60241	CERT/PLAT: PNT NO. 00089805	GRID: SW635/SW735
DOWL HKM FILE No: 149-97	M.O.A. CASE FILE NO: S-11747-1	SHEET 3 OF 4

P:\Projects\10362241\PLATTING\PLAT-UAA-83-309.dwg AUG 19 2010 08:34:53 (KET)



**LINE DATA TABLE  
FOR ADDITIONAL GAS EASEMENTS**

LINE	BEARING	LENGTH
15' IN WIDTH GAS EASEMENT		
L102 (CL)	S80°00'00"E	118.71'
L103 (CL)	S89°26'00"E	196.00'
L104 (CL)	N64°18'21"E	42.78'
L105 (CL)	S25°41'39"E	197.00'
L106 (CL)	N64°18'21"E	69.00'
20' IN WIDTH GAS EASEMENT		
L107 (CL)	S89°35'00"W	43.00'
L108 (CL)	S00°25'00"E	65.00'
L109 (CL)	S00°25'00"E	50.00'
L110 (CL)	S00°25'00"E	92.65'
L111 (CL)	S25°41'39"E	499.51'
L112 (TIE)	S89°59'38"E	44.83'

DOWL HKM

**CURVE DATA TABLE  
FOR ADDITIONAL GAS EASEMENTS**

CURVE	DELTA	RADIUS	LENGTH	CHORD	CHORD BEARING
15' IN WIDTH GAS EASEMENT					
C36 (CL)	90°00'00"	117.00'	183.78'	165.46'	S70°41'39"E
C37 (CL)	53°07'48"	383.00'	355.15'	342.57'	S89°07'45"E
C38 (CL)	53°07'48"	117.00'	108.49'	104.65'	S89°07'45"E
20' IN WIDTH GAS EASEMENT					
C39 (CL)	90°00'00"	30.00'	47.12'	42.43'	S44°35'00"W
C40 (CL)	90°00'00"	30.00'	47.12'	42.43'	S45°25'00"E
C41 (CL)	25°16'39"	997.93'	440.26'	436.70'	S13°03'19"E
C42 (CL)	8°52'45"	911.93'	141.32'	141.18'	S21°15'16"E

DOWL HKM

**DELINEATION OF  
CHESTER CREEK AND WETLAND BOUNDARIES;  
AND, ADDITIONAL GAS EASEMENT DETAILS.**  
SCALE: 1"=100'

PLAT OF  
**UAA SEAWOLF SUBDIVISION**  
COMPRISING OF TRACT A  
(WITH EASEMENT VACATIONS),  
*AND WITH VACATION RESOLUTION No. 2009-007*  
A 41.635 ACRE RESUBDIVISION OF  
ALASKA PACIFIC UNIVERSITY SUBDIVISION, TRACT A  
PER PLAT NO. 83-309.

ANCHORAGE RECORDING DISTRICT,  
THIRD JUDICIAL DISTRICT, STATE OF ALASKA.

LOCATED WITHIN  
THE S1/2 OF THE NE1/4, & THE N1/2 OF THE SE1/4  
OF SECTION 28, T13N, R3W, S.M. AK

**DOWL HKM**  
4041 B STREET, ANCHORAGE, ALASKA 99503 PH. (907) 562-2000 FAX (907) 563-3953

DRAWN BY: KET	DATE OF DRAWING: AUG-19-2010	CHECKED BY: KET
SCALE: 1"=100'	DATE OF SURVEY: N/A	FBK: N/A
W.O: 1132.60241	CERT/PLAT: PNT NO. 00089805	GRID: SW1635/SW1735
<b>DOWL HKM FILE</b>		<b>SHEET</b>
<b>No. 149-97</b>	M.O.A. CASE FILE NO: S-11747-1	<b>4 OF 4</b>

2010-58  
Anchorage  
DOW  
9-8-2010  
2:43 PM  
TIME