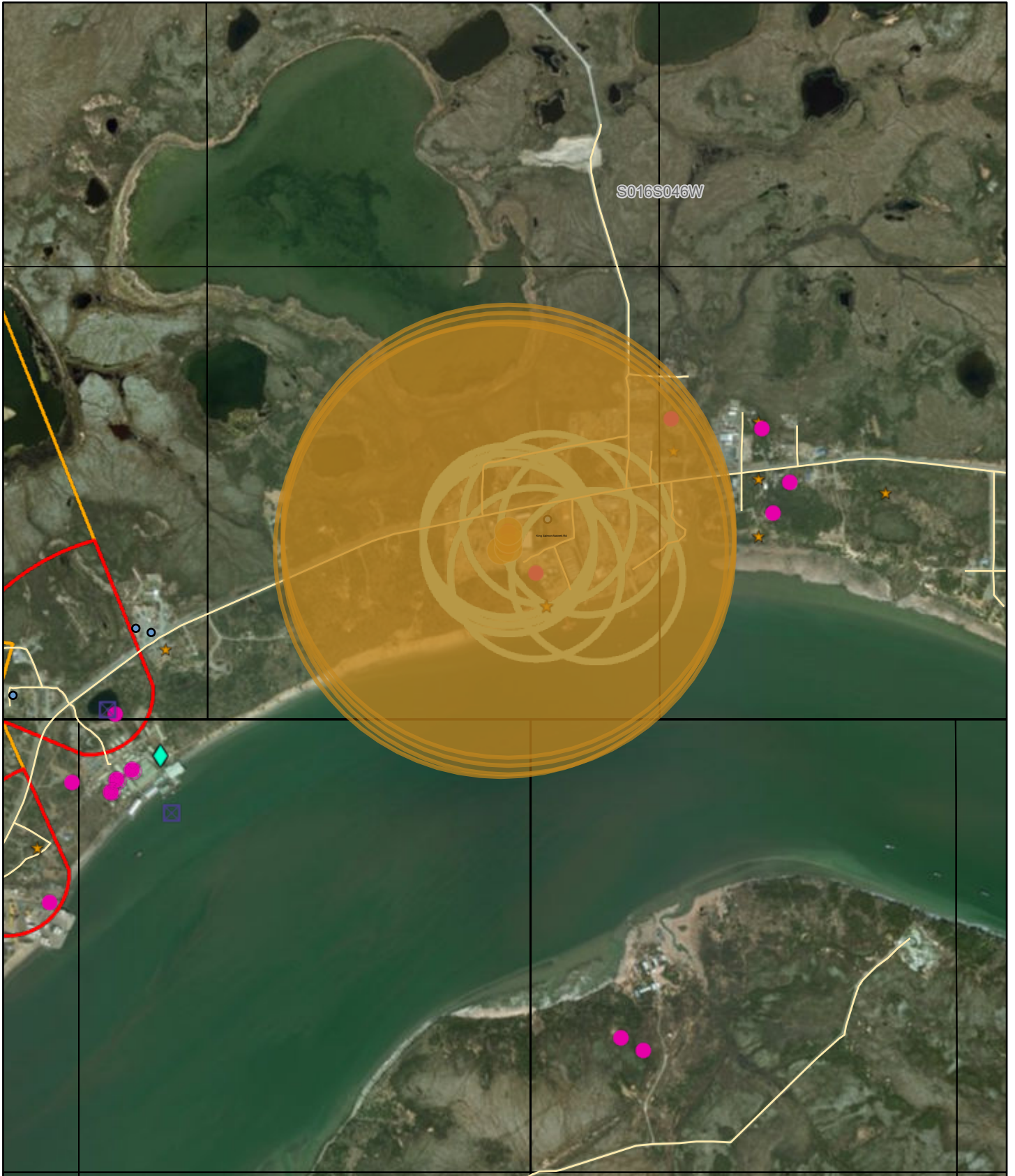
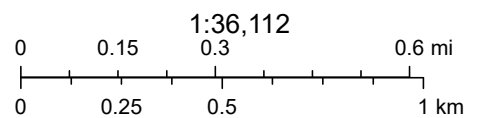


LAS 29442 1/2-Mile Proximity Map



12/18/2024, 10:49:17 AM



- | | |
|--------------------------------|--|
| Subsurface TWUA - Point | PLSS Section clip |
| Surface TWUA - Point | PLSS Township clip |
| Subsurface Water Right - Point | Active |
| DNR Well Log - WELTS | Provisional Protection Areas |
| Estimated Well Location | Zone B (GW-2 Yr Time of Travel or SW-1 mile buffer) |
| Estimated Well Location | Zone A (GW-Several Months Time of Travel or SW 1000 ft buffer) |
| Estimated Well Location | AWC Regions |
| Actual Well Location | Southwest |
| Actual Well Location | Species events |
| Actual Well Location | AWC_stream |
| Roads - ADOT | Anadromous points |
| | DEC Contaminated Sites |

State of Alaska Department of Environmental Conservation - Environmental Health - Drinking Water Program, Esri, NASA, NGA, USGS, FEMA, Bristol Bay Borough, State of Alaska, Esri, TomTom, Garmin, SafeGraph, METI/ NASA, USGS, EPA, NPS, US Census Bureau, USDA, USFWS, Source: Esri, Maxar, Earthstar Geographics, IGN, and the GIS User Community

DMLW Water Section
Alaska Department of Natural Resources