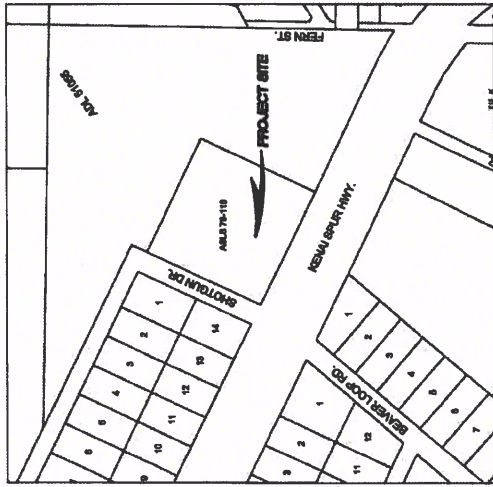


CITY OF KENAI

WELL 2D

WATER SYSTEM IMPROVEMENTS

PUMP, CONTROLS, SEASONAL WATERLINE



LOCATION MAP
SCALE: NOT TO SCALE

DRAWING INDEX

DRAWING TITLE SHEET	SHEET
LEGEND, ABBREVIATIONS, AND GENERAL NOTES	T1
SITE PLAN	C1
PIPING DETAILS	C2
	C3

CITY OF KENAI



CONSULTING ENGINEERS
STRUCTURAL/CIVIL
 155 BIDARWA ST.
 KENAI, AK 99551
 TEL: (907) 888-3888
 NELS@ENGINEERSALASKA.NET



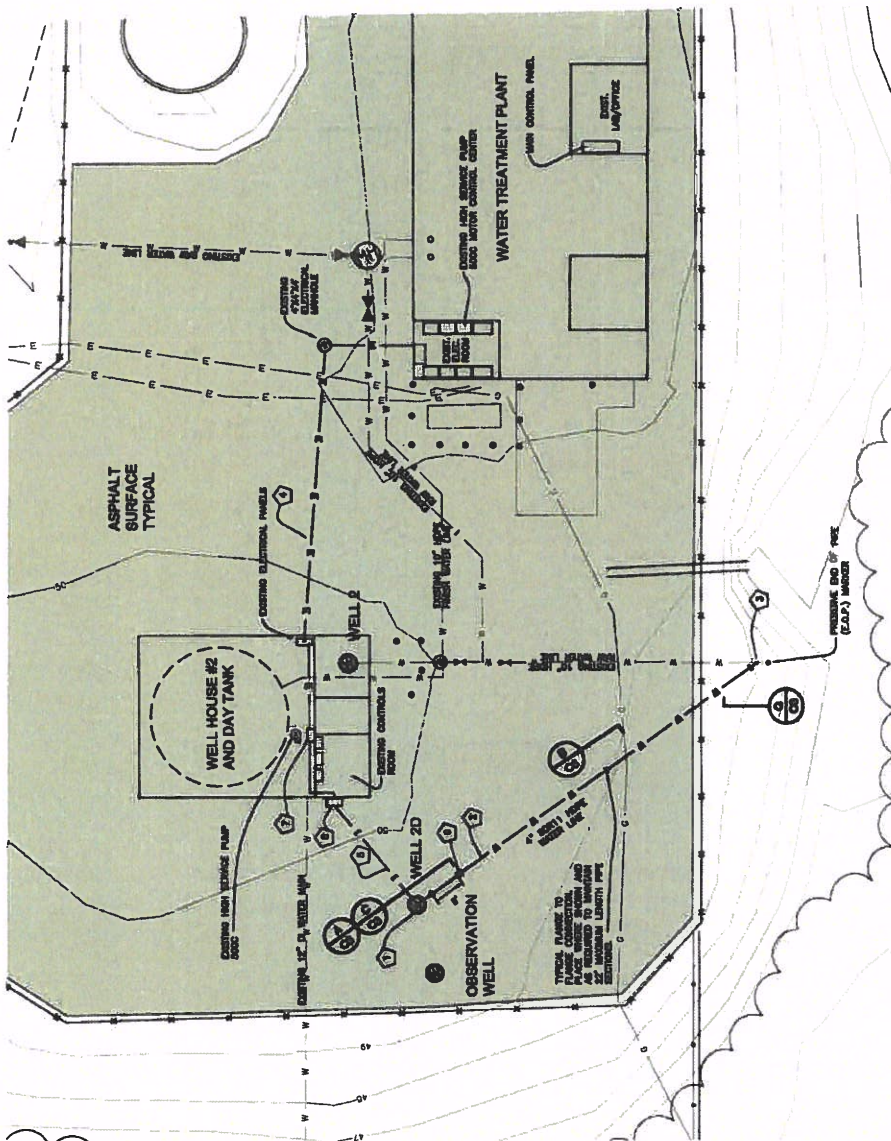
NO.	
REVISION	
DATE	

CONSULTING ENGINEERS
 STRUCTURAL/CIVIL
 155 BIRDAK ST
 KENAI, AK 99511
 TEL. (907) 983-3883
 MLENGENBINE@ALASKA.NET

BITE PLAN
 CITY OF KENAI
 KENAI, AK
WELL 2D WATER SYSTEM IMPROVEMENTS

PROJECT NO. 1408
 DRAWN BY: MAD
 CHECKED BY: MAN
 DATE: 3/24/2018
 SCALE: NOTED
 SHEET: C2
 3 OF 4

- NOTES:**
- 1) PROVIDE 6" DIA. 10' DEEP HIGH CAPACITY SUBMERSIBLE PUMP WITH 1/2" HOLES TO ALLOW FOR EASY MAINTENANCE AND REPAIR. PROVIDE 1/2" HOLES TO ALLOW FOR EASY MAINTENANCE AND REPAIR. PROVIDE 1/2" HOLES TO ALLOW FOR EASY MAINTENANCE AND REPAIR. PROVIDE 1/2" HOLES TO ALLOW FOR EASY MAINTENANCE AND REPAIR.
 - 2) PROVIDE 4" DIA. 10' DEEP HIGH CAPACITY SUBMERSIBLE PUMP WITH 1/2" HOLES TO ALLOW FOR EASY MAINTENANCE AND REPAIR. PROVIDE 1/2" HOLES TO ALLOW FOR EASY MAINTENANCE AND REPAIR. PROVIDE 1/2" HOLES TO ALLOW FOR EASY MAINTENANCE AND REPAIR.
 - 3) PROVIDE 4" DIA. 10' DEEP HIGH CAPACITY SUBMERSIBLE PUMP WITH 1/2" HOLES TO ALLOW FOR EASY MAINTENANCE AND REPAIR. PROVIDE 1/2" HOLES TO ALLOW FOR EASY MAINTENANCE AND REPAIR. PROVIDE 1/2" HOLES TO ALLOW FOR EASY MAINTENANCE AND REPAIR.
 - 4) PROVIDE 4" DIA. 10' DEEP HIGH CAPACITY SUBMERSIBLE PUMP WITH 1/2" HOLES TO ALLOW FOR EASY MAINTENANCE AND REPAIR. PROVIDE 1/2" HOLES TO ALLOW FOR EASY MAINTENANCE AND REPAIR. PROVIDE 1/2" HOLES TO ALLOW FOR EASY MAINTENANCE AND REPAIR.
 - 5) PROVIDE 4" DIA. 10' DEEP HIGH CAPACITY SUBMERSIBLE PUMP WITH 1/2" HOLES TO ALLOW FOR EASY MAINTENANCE AND REPAIR. PROVIDE 1/2" HOLES TO ALLOW FOR EASY MAINTENANCE AND REPAIR. PROVIDE 1/2" HOLES TO ALLOW FOR EASY MAINTENANCE AND REPAIR.
 - 6) PROVIDE 4" DIA. 10' DEEP HIGH CAPACITY SUBMERSIBLE PUMP WITH 1/2" HOLES TO ALLOW FOR EASY MAINTENANCE AND REPAIR. PROVIDE 1/2" HOLES TO ALLOW FOR EASY MAINTENANCE AND REPAIR. PROVIDE 1/2" HOLES TO ALLOW FOR EASY MAINTENANCE AND REPAIR.
 - 7) PROVIDE 4" DIA. 10' DEEP HIGH CAPACITY SUBMERSIBLE PUMP WITH 1/2" HOLES TO ALLOW FOR EASY MAINTENANCE AND REPAIR. PROVIDE 1/2" HOLES TO ALLOW FOR EASY MAINTENANCE AND REPAIR. PROVIDE 1/2" HOLES TO ALLOW FOR EASY MAINTENANCE AND REPAIR.
 - 8) PROVIDE 4" DIA. 10' DEEP HIGH CAPACITY SUBMERSIBLE PUMP WITH 1/2" HOLES TO ALLOW FOR EASY MAINTENANCE AND REPAIR. PROVIDE 1/2" HOLES TO ALLOW FOR EASY MAINTENANCE AND REPAIR. PROVIDE 1/2" HOLES TO ALLOW FOR EASY MAINTENANCE AND REPAIR.
 - 9) PROVIDE 4" DIA. 10' DEEP HIGH CAPACITY SUBMERSIBLE PUMP WITH 1/2" HOLES TO ALLOW FOR EASY MAINTENANCE AND REPAIR. PROVIDE 1/2" HOLES TO ALLOW FOR EASY MAINTENANCE AND REPAIR. PROVIDE 1/2" HOLES TO ALLOW FOR EASY MAINTENANCE AND REPAIR.
 - 10) PROVIDE 4" DIA. 10' DEEP HIGH CAPACITY SUBMERSIBLE PUMP WITH 1/2" HOLES TO ALLOW FOR EASY MAINTENANCE AND REPAIR. PROVIDE 1/2" HOLES TO ALLOW FOR EASY MAINTENANCE AND REPAIR. PROVIDE 1/2" HOLES TO ALLOW FOR EASY MAINTENANCE AND REPAIR.



Ⓐ SITE PLAN
 GRAPHIC SCALE: 1" = 10' (22234), 1" = 20' (11117)



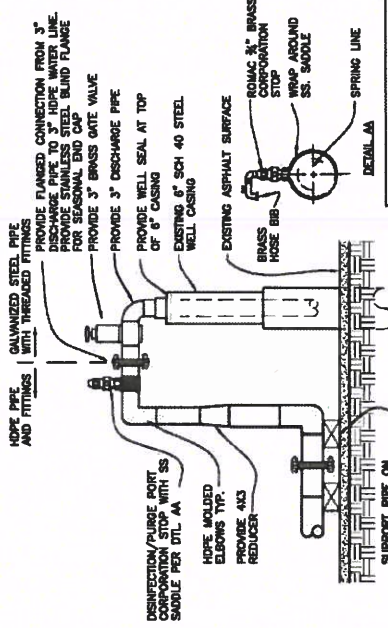


NO.	REVISION	DATE

CONSULTING ENGINEERS
 STRUTLAR/CIVIL
 103 BIDARKA ST
 KENAI, AK 99511
 TEL: (907) 583 - 3983
 MELBONENGINEER@ALASKA.NET

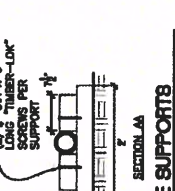
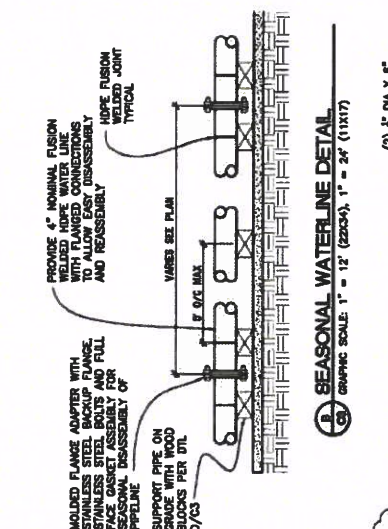
WELL 2D WATER SYSTEM IMPROVEMENTS
 CITY OF KENAI
 KENAI, AK
 DETAILS

PROJECT NO. 1408
 DRAWN BY: BMD
 CHECKED BY: BMD
 DATE: 3/24/2015
 SCALE: NOTED
 HORZ. NOTED
 VERT. NOTED
 SHEET: 8-CET
 4 OF 4



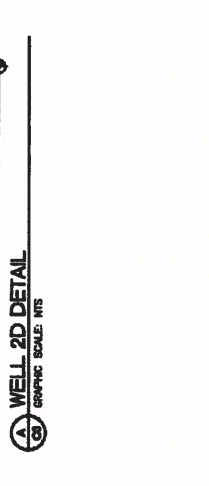
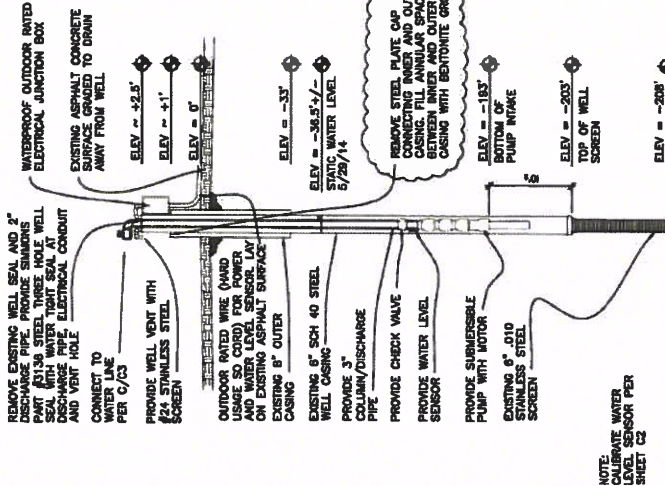
NOTE: RESTRAINTS ARE NOT INCLUDED. THEREFORE OPERATORS MUST UTILIZE EFFECTS OF WATER HAMMER. THE LINE FILING PROCEDURES SHALL INCLUDE A SLOW AND OPEN OPERATION OF THE WELL PUMP SHALL UTILIZE A RAMPED UP AND STOP WITH A DURATION OF AT LEAST 1 MINUTE.

A WELL 2D DETAIL
 GRAPHIC SCALE: 1" = 12' (2225A), 1" = 24' (11X17)



B SEASONAL WATERLINE DETAIL
 GRAPHIC SCALE: 1" = 12' (2225A), 1" = 24' (11X17)

C WELL 2D CONNECTION TO WATERLINE
 GRAPHIC SCALE: 1" = 12' (2225A), 1" = 24' (11X17)



D VERTICAL RISER PIPE INSTALLATION
 GRAPHIC SCALE: 1" = 12' (2225A), 1" = 24' (11X17)

E FLOW METER INSTALLATION
 GRAPHIC SCALE: 1" = 12' (2225A), 1" = 24' (11X17)

SEASONAL INSTALLATION PROCEDURES:
 1. REMOVE BLIND FLANGES AND INSTALL CHECK VALVE IN RISER PIPE CONNECTION AT WELLHEAD DISCONNECTED.
 2. FLUSH WATER FROM WELL DISCHARGE.
 3. DISCONNECT ABOVEGROUND AND RISER PIPE FROM WELL PUMP.
 4. PROPERLY STORE WATERLINE IN CLEAN COVERED LOCATION.
 5. REMOVE WATER FROM RISER PIPE AND 10" WATER MAIN BY SUCTION.
 6. REMOVE WATER FROM TOP 20' OF SEASONAL WATERLINE BY SUCTION.
 7. REPLACE BLIND FLANGES AT WELLHEAD AND RISER PIPE.
 8. VERIFY THE ABSENCE OF COULFORM VA TESTING.

SEASONAL DISCONNECT PROCEDURES:
 1. SHUT OFF WELL PUMP.
 2. DISCONNECT ABOVEGROUND WATER MAIN.
 3. DISCONNECT ABOVEGROUND AND RISER PIPE.
 4. PROPERLY STORE WATERLINE IN CLEAN COVERED LOCATION.
 5. REMOVE WATER FROM RISER PIPE AND 10" WATER MAIN BY SUCTION.
 6. REMOVE WATER FROM TOP 20' OF SEASONAL WATERLINE BY SUCTION.
 7. REPLACE BLIND FLANGES AT WELLHEAD AND RISER PIPE.
 8. VERIFY THE ABSENCE OF COULFORM VA TESTING.

REFER TO MASS SECTION 60.02 ARTICLE 2.4 FOR FLUSHING AND TESTING SPECIFICS

NOT USED

NOTE: CALIBRATE WATER LEVEL SENSOR PER SHEET C2