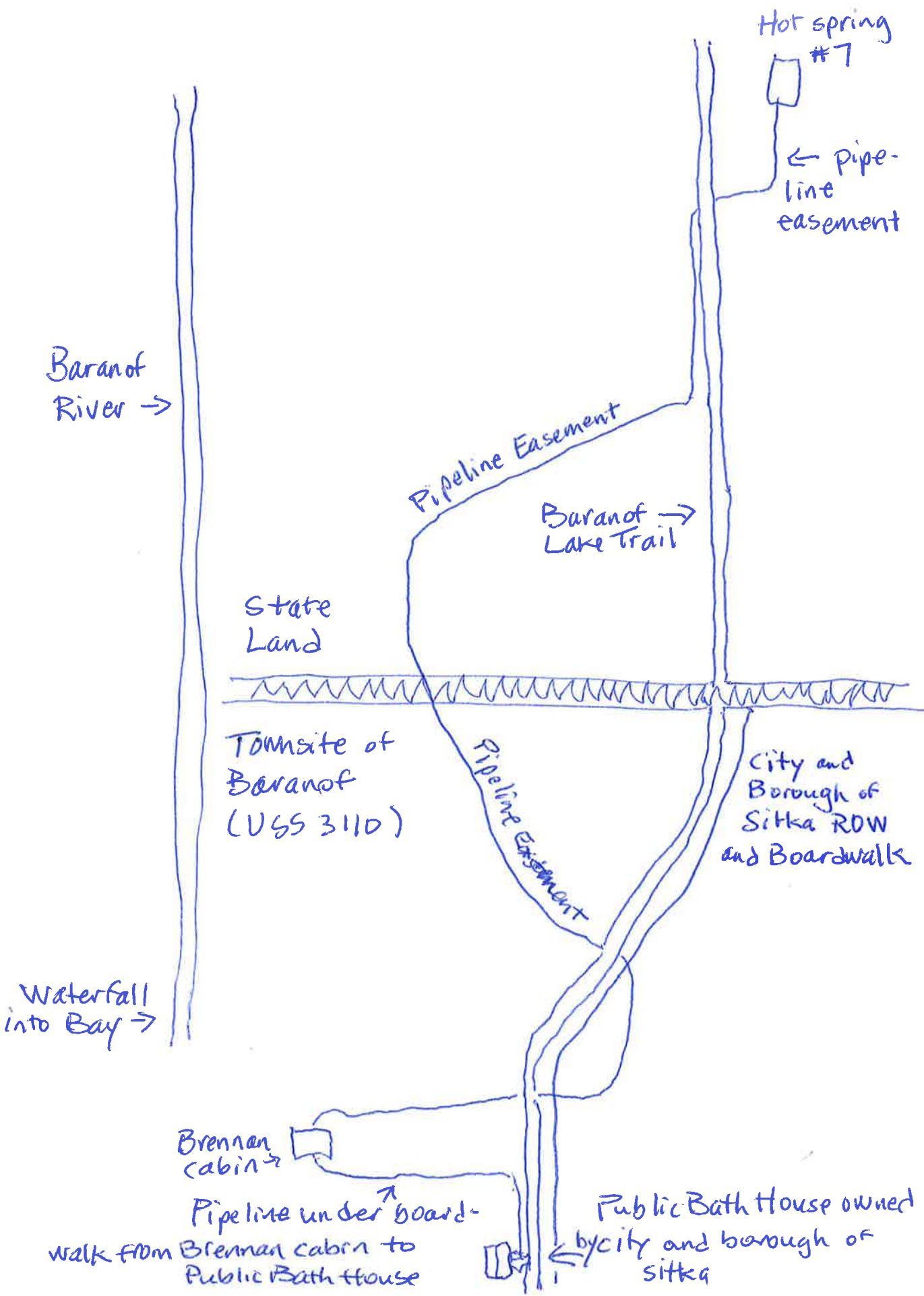


→ North



Hot spring #7

← Pipeline easement

Baranof River →

Pipeline Easement

Baranof Lake Trail →

State Land

Townsite of Baranof (USS 3110)

City and Borough of Sitka ROW and Boardwalk

Pipeline Easement

Waterfall into Bay →

Brennan cabin →

Pipeline under boardwalk from Brennan cabin to Public Bath House

Public Bath House owned by city and borough of Sitka

**DEPARTMENT OF THE INTERIOR**  
FRANKLIN K. LANE, Secretary

**UNITED STATES GEOLOGICAL SURVEY**  
GEORGE OTIS SMITH, Director

**Water-Supply Paper 418**

# MINERAL SPRINGS OF ALASKA

BY

GERALD A. WARING

WITH A CHAPTER ON THE

CHEMICAL CHARACTER OF SOME SURFACE WATERS OF ALASKA

BY

RICHARD B. DOLE AND ALFRED A. CHAMBERS



Water Resources Branch,  
Geological Survey,  
Box 3106, Capitol Station  
Oklahoma City, Okla.

WASHINGTON  
GOVERNMENT PRINTING OFFICE  
1917

24 hours (nearly 800 gallons a minute). A green algal growth that forms along the stream indicates by its abundance and color that the water probably has a temperature of about 120° to 150° F. The water is believed by Mr. Wright to issue near or along a fractured zone between the schistose country rock and an intruded granite mass.

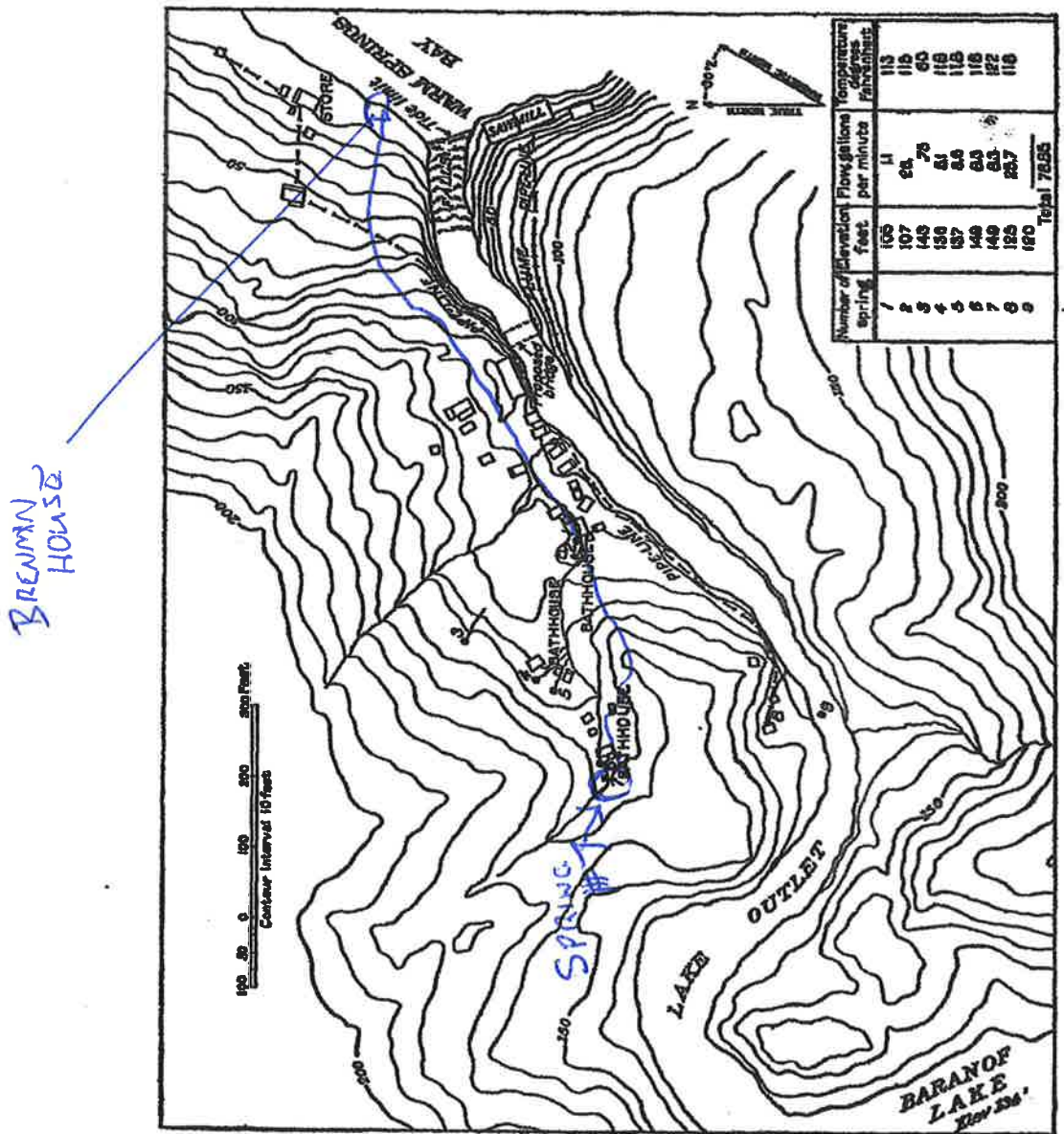


FIGURE 2.—Sketch map of Baranof Hot Springs and vicinity, Baranof Island, southeastern Alaska.

BARANOF HOT SPRINGS.

Baranof Hot Springs (91) issue on the slopes between Warm Springs Bay (a small bay on the eastern side of Baranof Island) and Lake Baranof, a small lake that lies near but more than 100 feet above the salt water. The sketch map (fig. 2), based on a sur-