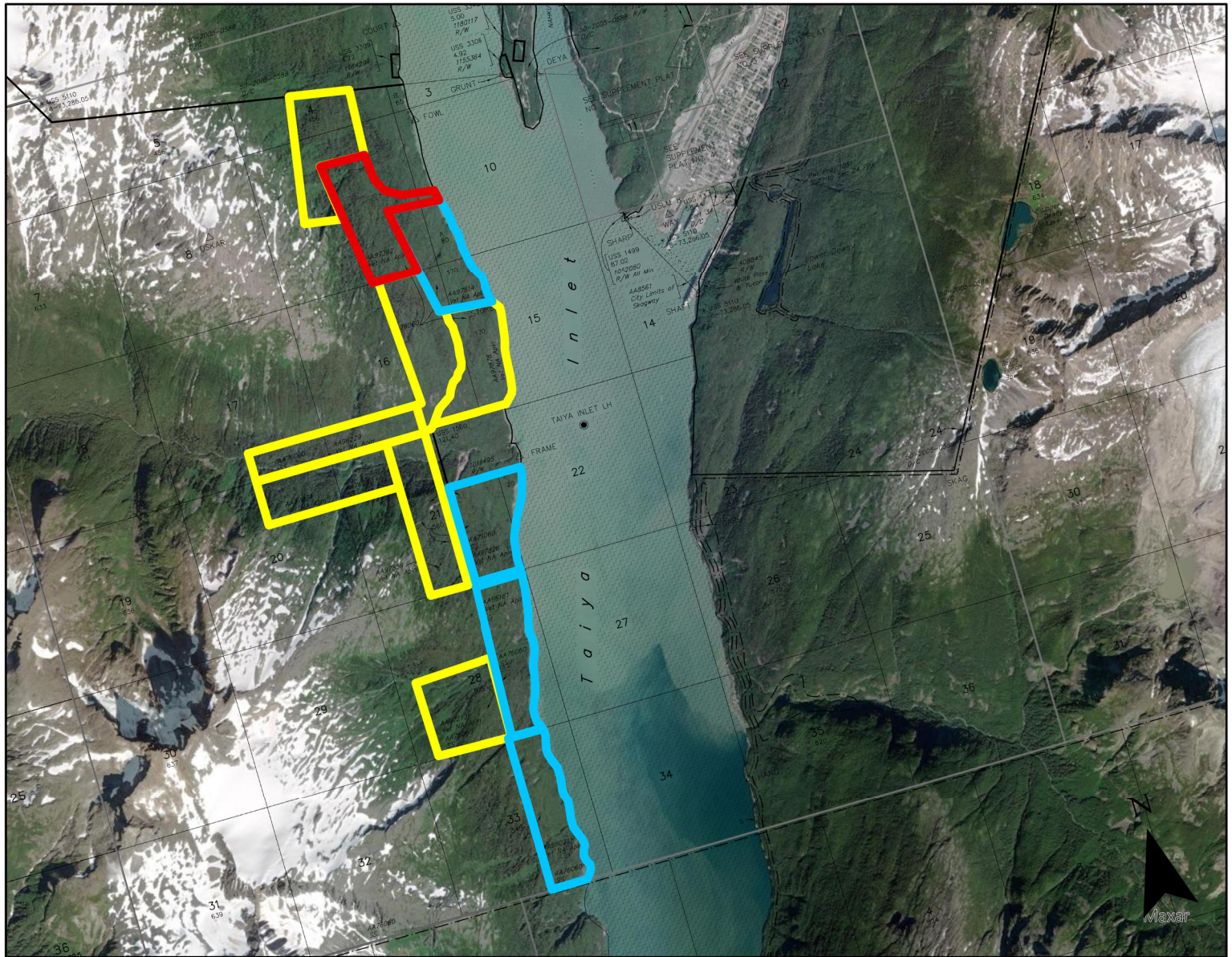



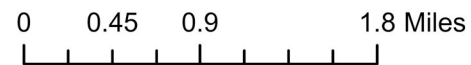


# Attachment B: Vicinity Map Alaska Native Veteran Land Allotment Program Application AA-97392

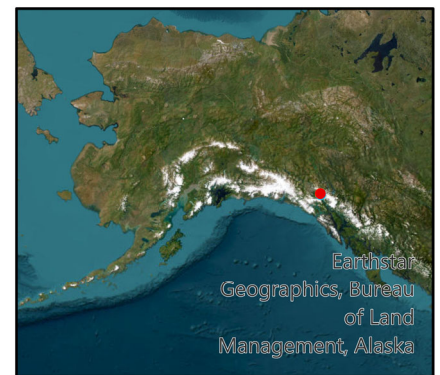
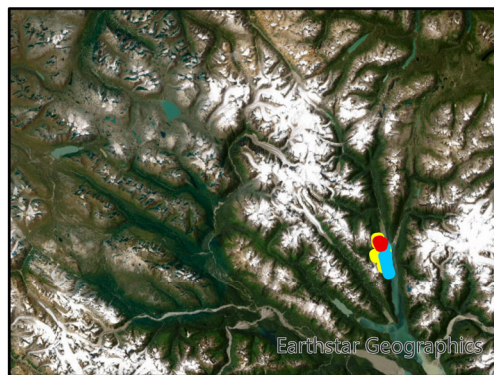


-  Project Location  
AA-97392
-  Previously Relinquished  
Allotment
-  Nearby Allotment  
Request

**Sections 9 and 10, Township 28 S,  
Range 59 E., Copper River Meridian**



USGS QUAD 1:25,000  
Skagway B-2 NE  
For more information contact:  
Walter "Z" Zimmerman  
Department of Natural Resources  
Division of Mining, Land, and Water  
Realty Services Section  
Phone: 907-334-2550  
Email: [walter.zimmerman@alaska.gov](mailto:walter.zimmerman@alaska.gov)



Earthstar  
Geographics, Bureau  
of Land  
Management, Alaska