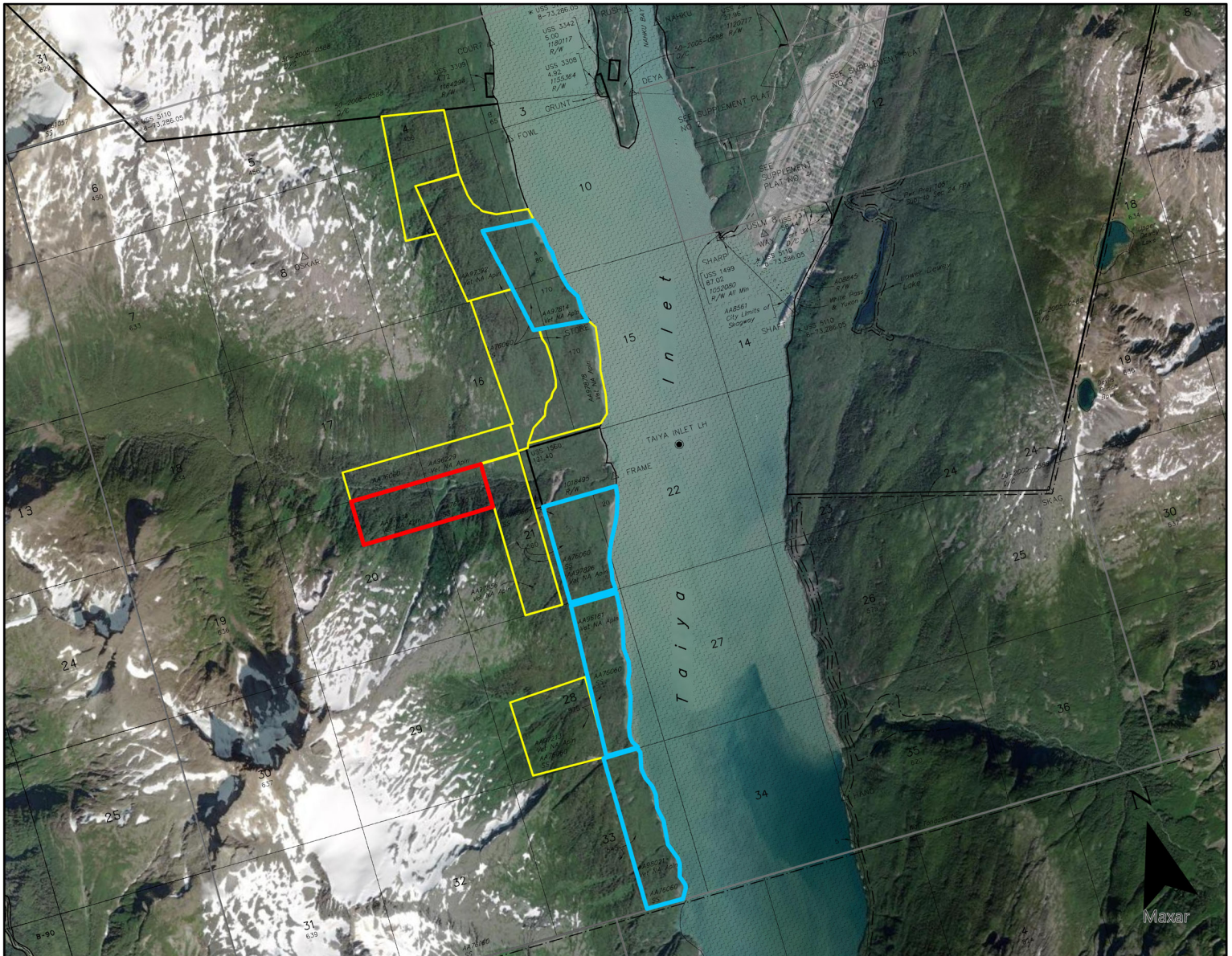
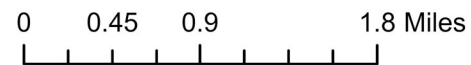


Attachment A: Vicinity Map Alaska Native Veteran Land Allotment Program Application AA-97234

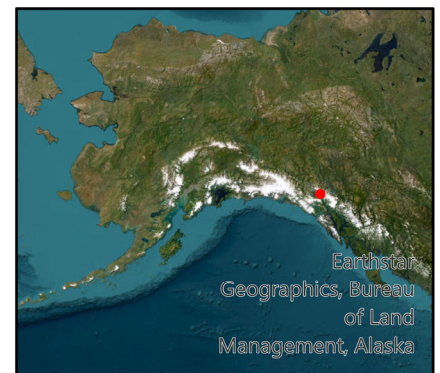
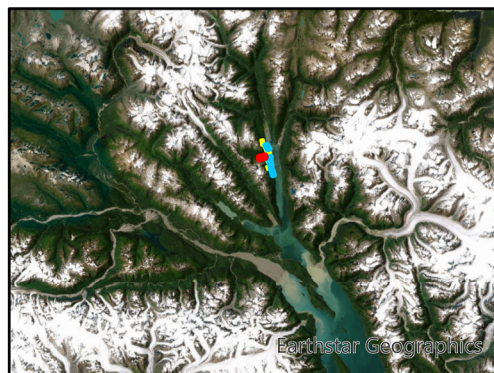


- ▭ Project Location AA-97234
- ▭ Previously Relinquished Allotment
- ▭ Nearby Dingell Application

**Sections 20 and 21, Township 28 S.,
Range 59 E., Copper River Meridian**



USGS QUAD 1:25,000
Skagway B-2 NE
For more information contact:
Walter "Z" Zimmerman
Department of Natural Resources
Division of Mining, Land, and Water
Realty Services Section
Phone: 907-334-2550
Email: walter.zimmerman@alaska.gov



Earthstar
Geographics, Bureau
of Land
Management, Alaska