



PROPOSED CONSTRUCTION PLANS

PROJECT NAME:
PORTAGE
FIBER BUILD

PROJECT LOCATION:
PORTAGE, AK
ANCHORAGE
BOROUGH

GENERAL NOTES:

1. All existing utility locations shown are approximate and may not be accurate. It is the contractor's responsibility to locate (horizontally and vertically) within the area of construction) and repair any utilities damaged during this construction described herein.
2. Call 811 locate service at least 10 days prior to construction.
3. Contractor is responsible for "potholing", locating and probing all utilities in the work area prior to construction to prevent damage.
4. All underground facility road crossings must be at least 60" minimum depth below grade.
5. All underground facility rail crossings must be at least 60" minimum depth below the rail.



WILLIAMS
COMMUNICATIONS INC.
SINCE 1978

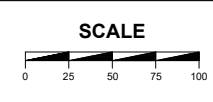
4701 BUSINESS PARK BLVD., J-12
ANCHORAGE, AK, 99503
(907) 868-8848
www.wilcomm.com

--	--	--
--	C4	C3
--	--	--

CALL BEFORE YOU DIG! 1-907-278-3121
ALL POLE ATTACHMENTS ARE TO EXISTING POLES
EXCEPT WHERE OTHERWISE INDICATED

- ⊗ POWER POLE
- ⊗ JOINT USE POLE
- TELCO POLE
- ⊞ NEW HANDHOLE
- ⊗ JOINT USE POLE (WITH TRANSFORMER)
- ➔ EXISTING ANCHOR
- PROPOSED ANCHOR

- PROPOSED FIBER OPTIC CABLE (AERIAL)
- - - PROPOSED FIBER OPTIC CABLE (UNDERGROUND)
- ⊞ FIBER OPTIC SPLICE CASE
- ∞ FIBER STORAGE/SLACK LOOP



DATE: 9/16/2024
SCALE: 1" = 100' (APPROX.)
CITY: PORTAGE, AK

DRAFTED BY: WILLIAMS
COUNTY/PARISH: MSB

PORTAGE
FIBER BUILD
SHEET C4 OF C12



**PROPOSED
CONSTRUCTION
PLANS**

PROJECT NAME:
PORTAGE
FIBER BUILD

PROJECT LOCATION:
PORTAGE, AK
ANCHORAGE
BOROUGH

GENERAL NOTES:

1. All existing utility locations shown are approximate and may not be accurate. It is the contractor's responsibility to locate (horizontally and vertically) within the area of construction) and repair any utilities damaged during this construction described herein.
2. Call 811 locate service at least 10 days prior to construction.
3. Contractor is responsible for "potholing", locating and probing all utilities in the work area prior to construction to prevent damage.
4. All underground facility road crossings must be at least 60" minimum depth below grade.
5. All underground facility rail crossings must be at least 60" minimum depth below the rail.



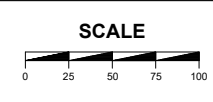
WILLIAMS
COMMUNICATIONS INC.
SINCE 1978
4701 BUSINESS PARK BLVD., J-12
ANCHORAGE, AK, 99503
(907) 868-8848
www.wilcomm.com

--	--	--
--	C4	C3
--	--	--

CALL BEFORE YOU DIG! 1-907-278-3121
ALL POLE ATTACHMENTS ARE TO EXISTING POLES
EXCEPT WHERE OTHERWISE INDICATED

- ⊗ POWER POLE
- ⊗ JOINT USE POLE
- ⊗ POWER POLE (WITH TRANSFORMER)
- ⊗ JOINT USE POLE (WITH TRANSFORMER)
- TELCO POLE
- ➔ EXISTING ANCHOR
- ⊞ NEW HANDHOLE
- ➔ PROPOSED ANCHOR

- PROPOSED FIBER OPTIC CABLE (AERIAL)
- - - PROPOSED FIBER OPTIC CABLE (UNDERGROUND)
- FIBER OPTIC SPLICE CASE
- ∞ FIBER STORAGE/SLACK LOOP



DATE: 9/16/2024
SCALE: 1" = 100' (APPROX.)
CITY: PORTAGE, AK

DRAFTED BY: WILLIAMS
COUNTY/PARISH: MSB

PORTAGE
FIBER BUILD
SHEETC130F C12



PROPOSED CONSTRUCTION PLANS

PROJECT NAME:
PORTAGE
FIBER BUILD

PROJECT LOCATION:
PORTAGE, AK
ANCHORAGE
BOROUGH

GENERAL NOTES:

1. All existing utility locations shown are approximate and may not be accurate. It is the contractor's responsibility to locate (horizontally and vertically) within the area of construction) and repair any utilities damaged during this construction described herein.
2. Call 811 locate service at least 10 days prior to construction.
3. Contractor is responsible for "potholing", locating and probing all utilities in the work area prior to construction to prevent damage.
4. All underground facility road crossings must be at least 60" minimum depth below grade.
5. All underground facility rail crossings must be at least 60" minimum depth below the rail.



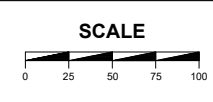
WILLIAMS
COMMUNICATIONS INC.
SINCE 1978
4701 BUSINESS PARK BLVD., J-12
ANCHORAGE, AK, 99503
(907) 868-8848
www.wilcomm.com

--	--	--
--	C4	C3
--	--	--

CALL BEFORE YOU DIG! 1-907-278-3121
ALL POLE ATTACHMENTS ARE TO EXISTING POLES
EXCEPT WHERE OTHERWISE INDICATED

- ⊗ POWER POLE
- ⊗ JOINT USE POLE
- ⊗ POWER POLE (WITH TRANSFORMER)
- ⊗ JOINT USE POLE (WITH TRANSFORMER)
- TELCO POLE
- ➔ EXISTING ANCHOR
- ⊞ NEW HANDHOLE
- ➔ PROPOSED ANCHOR

- PROPOSED FIBER OPTIC CABLE (AERIAL)
- - - PROPOSED FIBER OPTIC CABLE (UNDERGROUND)
- ⊞ FIBER OPTIC SPLICE CASE
- ∞ FIBER STORAGE/SLACK LOOP



DATE: 9/16/2024
SCALE: 1" = 100' (APPROX.)
CITY: PORTAGE, AK

DRAFTED BY: WILLIAMS
COUNTY/PARISH: MSB

PORTAGE
FIBER BUILD
SHEETC140F C12



PROPOSED CONSTRUCTION PLANS

PROJECT NAME:
PORTAGE
FIBER BUILD

PROJECT LOCATION:
PORTAGE, AK
ANCHORAGE
BOROUGH

GENERAL NOTES:

1. All existing utility locations shown are approximate and may not be accurate. It is the contractor's responsibility to locate (horizontally and vertically) within the area of construction) and repair any utilities damaged during this construction described herein.
2. Call 811 locate service at least 10 days prior to construction.
3. Contractor is responsible for "potholing", locating and probing all utilities in the work area prior to construction to prevent damage.
4. All underground facility road crossings must be at least 60" minimum depth below grade.
5. All underground facility rail crossings must be at least 60" minimum depth below the rail.



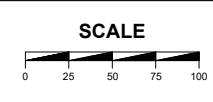
WILLIAMS
COMMUNICATIONS INC.
SINCE 1978
4701 BUSINESS PARK BLVD., J-12
ANCHORAGE, AK, 99503
(907) 868-8848
www.wilcomm.com

--	--	--
--	C4	C3
--	--	--

CALL BEFORE YOU DIG! 1-907-278-3121
ALL POLE ATTACHMENTS ARE TO EXISTING POLES
EXCEPT WHERE OTHERWISE INDICATED

- ⊗ POWER POLE (WITH TRANSFORMER)
- ⊗ JOINT USE POLE (WITH TRANSFORMER)
- TELCO POLE
- ⊞ NEW HANDHOLE
- ⊞ EXISTING ANCHOR
- ⊞ PROPOSED ANCHOR

- PROPOSED FIBER OPTIC CABLE (AERIAL)
- - - PROPOSED FIBER OPTIC CABLE (UNDERGROUND)
- ⊞ FIBER OPTIC SPLICE CASE
- ∞ FIBER STORAGE/SLACK LOOP



DATE: 9/16/2024
SCALE: 1" = 100' (APPROX.)
CITY: PORTAGE, AK

DRAFTED BY: WILLIAMS
COUNTY/PARISH: MSB

PORTAGE
FIBER BUILD
SHEETC150F C12



PROPOSED CONSTRUCTION PLANS

PROJECT NAME:
PORTAGE
FIBER BUILD

PROJECT LOCATION:
PORTAGE, AK
ANCHORAGE
BOROUGH

GENERAL NOTES:

1. All existing utility locations shown are approximate and may not be accurate. It is the contractor's responsibility to locate (horizontally and vertically) within the area of construction) and repair any utilities damaged during this construction described herein.
2. Call 811 locate service at least 10 days prior to construction.
3. Contractor is responsible for "potholing", locating and probing all utilities in the work area prior to construction to prevent damage.
4. All underground facility road crossings must be at least 60" minimum depth below grade.
5. All underground facility rail crossings must be at least 60" minimum depth below the rail.



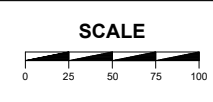
WILLIAMS
COMMUNICATIONS INC.
SINCE 1978
4701 BUSINESS PARK BLVD., J-12
ANCHORAGE, AK, 99503
(907) 868-8848
www.wilcomm.com

--	--	--
--	C4	C3
--	--	--

CALL BEFORE YOU DIG! 1-907-278-3121
ALL POLE ATTACHMENTS ARE TO EXISTING POLES
EXCEPT WHERE OTHERWISE INDICATED

- ⊗ POWER POLE
- ⊗ JOINT USE POLE
- TELCO POLE
- ⊞ NEW HANDHOLE
- ⊗ JOINT USE POLE (WITH TRANSFORMER)
- ➔ EXISTING ANCHOR
- PROPOSED ANCHOR

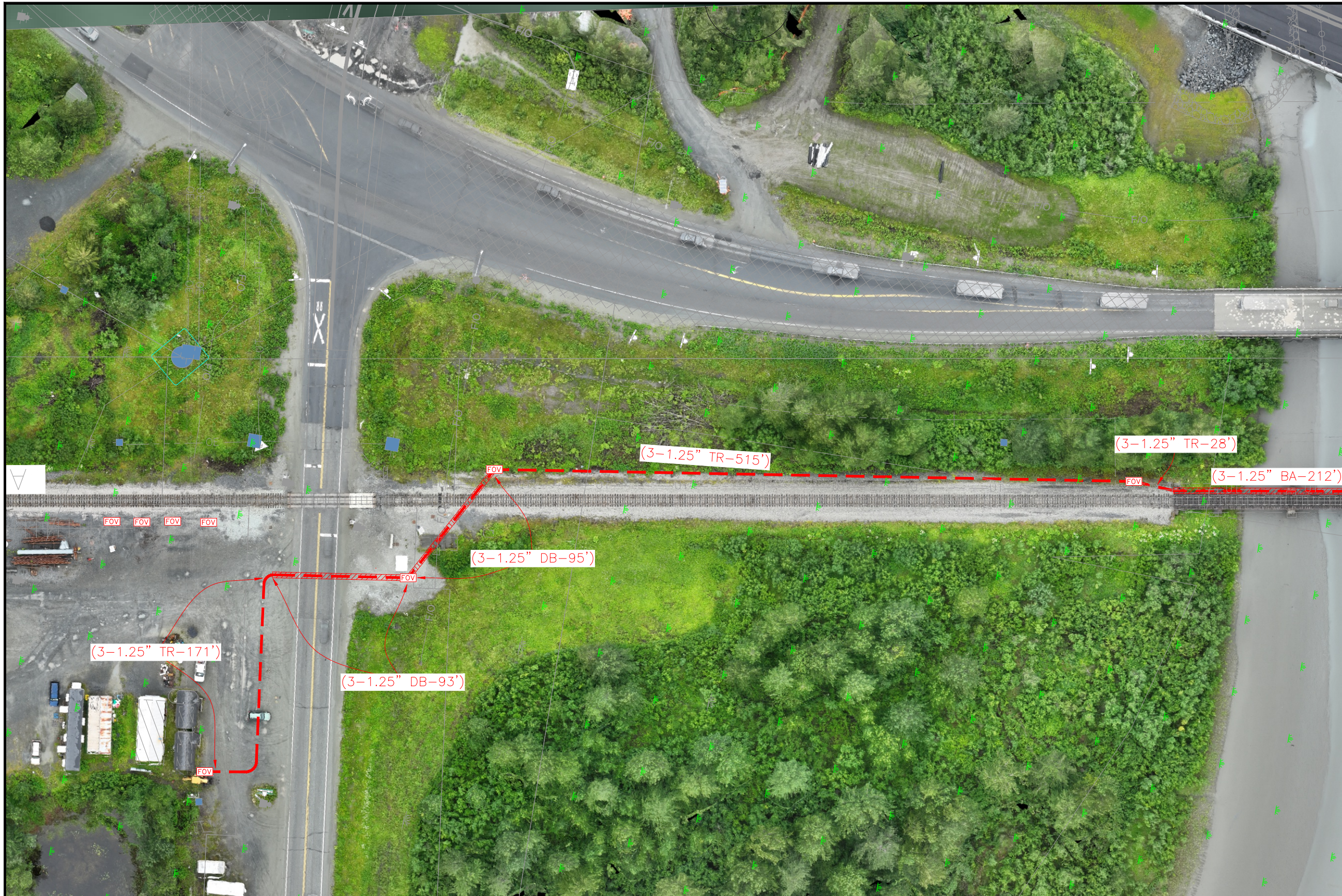
- PROPOSED FIBER OPTIC CABLE (AERIAL)
- - - PROPOSED FIBER OPTIC CABLE (UNDERGROUND)
- ⊞ FIBER OPTIC SPLICE CASE
- ∞ FIBER STORAGE/SLACK LOOP



DATE: 9/16/2024
SCALE: 1" = 100' (APPROX.)
CITY: PORTAGE, AK

DRAFTED BY: WILLIAMS
COUNTY/PARISH: MSB

PORTAGE
FIBER BUILD
SHEETC160F C12



PROPOSED CONSTRUCTION PLANS

PROJECT NAME:
PORTAGE
FIBER BUILD

PROJECT LOCATION:
PORTAGE, AK
ANCHORAGE
BOROUGH

GENERAL NOTES:

1. All existing utility locations shown are approximate and may not be accurate. It is the contractor's responsibility to locate (horizontally and vertically) within the area of construction) and repair any utilities damaged during this construction described herein.
2. Call 811 locate service at least 10 days prior to construction.
3. Contractor is responsible for "potholing", locating and probing all utilities in the work area prior to construction to prevent damage.
4. All underground facility road crossings must be at least 60" minimum depth below grade.
5. All underground facility rail crossings must be at least 60" minimum depth below the rail.



WILLIAMS
COMMUNICATIONS INC.
SINCE 1978

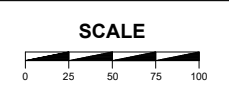
4701 BUSINESS PARK BLVD, J-12
ANCHORAGE, AK, 99503
(907) 868-8848
www.wilcomm.com

--	--	--
--	C4	C3
--	--	--

CALL BEFORE YOU DIG! 1-907-278-3121
ALL POLE ATTACHMENTS ARE TO EXISTING POLES
EXCEPT WHERE OTHERWISE INDICATED

- ⊗ POWER POLE
- ⊗ JOINT USE POLE
- ⊗ POWER POLE (WITH TRANSFORMER)
- ⊗ JOINT USE POLE (WITH TRANSFORMER)
- TELCO POLE
- ➔ EXISTING ANCHOR
- ⊞ NEW HANDHOLE
- ➔ PROPOSED ANCHOR

- PROPOSED FIBER OPTIC CABLE (AERIAL)
- - - PROPOSED FIBER OPTIC CABLE (UNDERGROUND)
- ⊞ FIBER OPTIC SPLICE CASE
- ∞ FIBER STORAGE/SLACK LOOP



DATE: 9/16/2024
SCALE: 1" = 100' (APPROX.)
CITY: PORTAGE, AK

DRAFTED BY: WILLIAMS
COUNTY/PARISH: MSB

PORTAGE
FIBER BUILD
SHEETC17OF C12