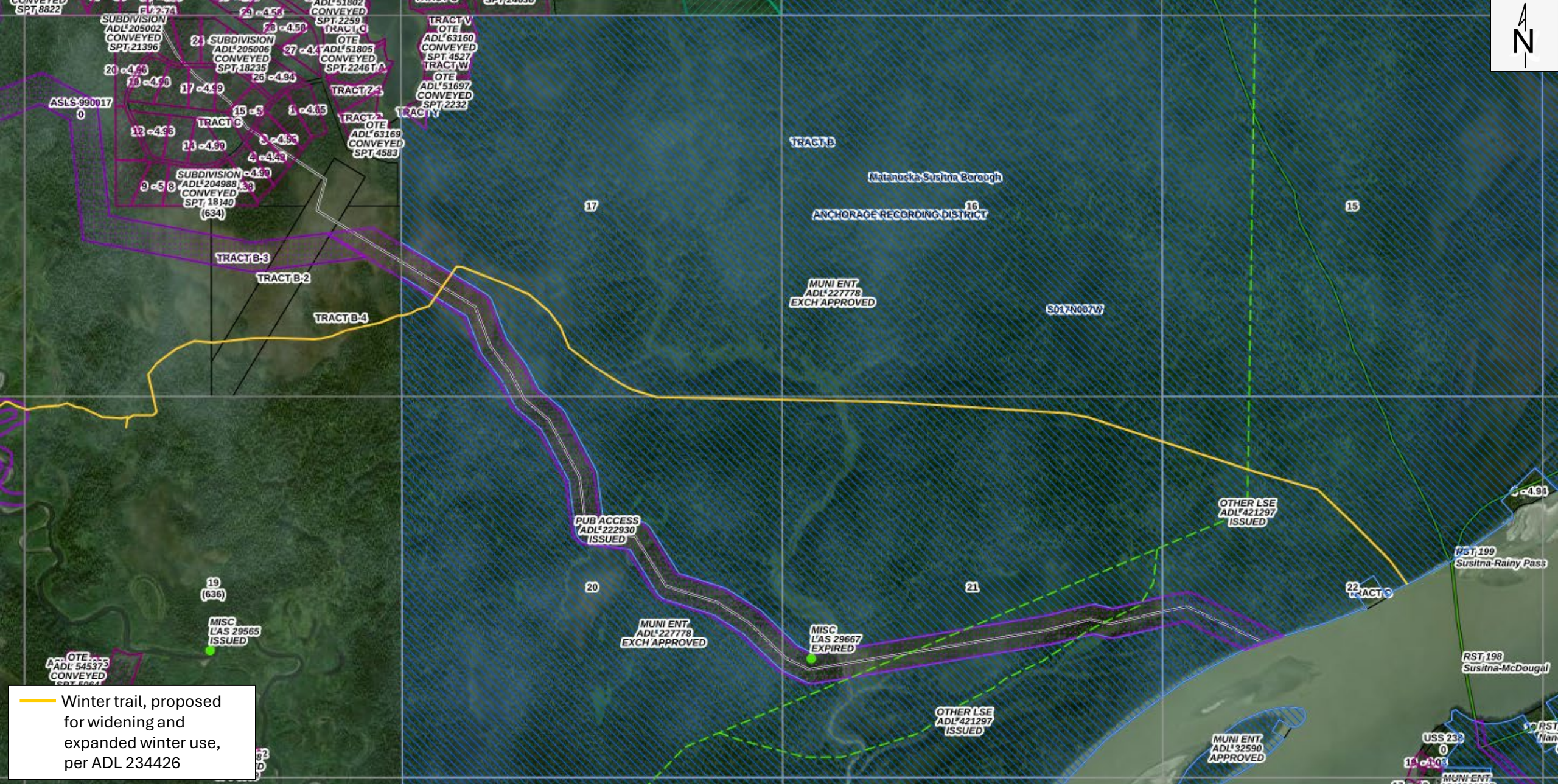


Start of Trail Section 22, Township 017N, Range 007W, Seward Meridian;  
End of Trail: Section 29, Township 021N, Range 011W, Seward Meridian.

# Winter Trail Improvement Project





Affected Sections:  
 Section 22, Township 017N, Range 007W, Seward Meridian; Section 21, Township 017N, Range 007W, Seward Meridian;  
 Section 20, Township 017N, Range 007W, Seward Meridian; Section 17, Township 017N, Range 007W, Seward Meridian;  
 Section 18, Township 017N, Range 007W, Seward Meridian; Section 19, Township 017N, Range 007W, Seward Meridian.

## Winter Trail Improvement Project

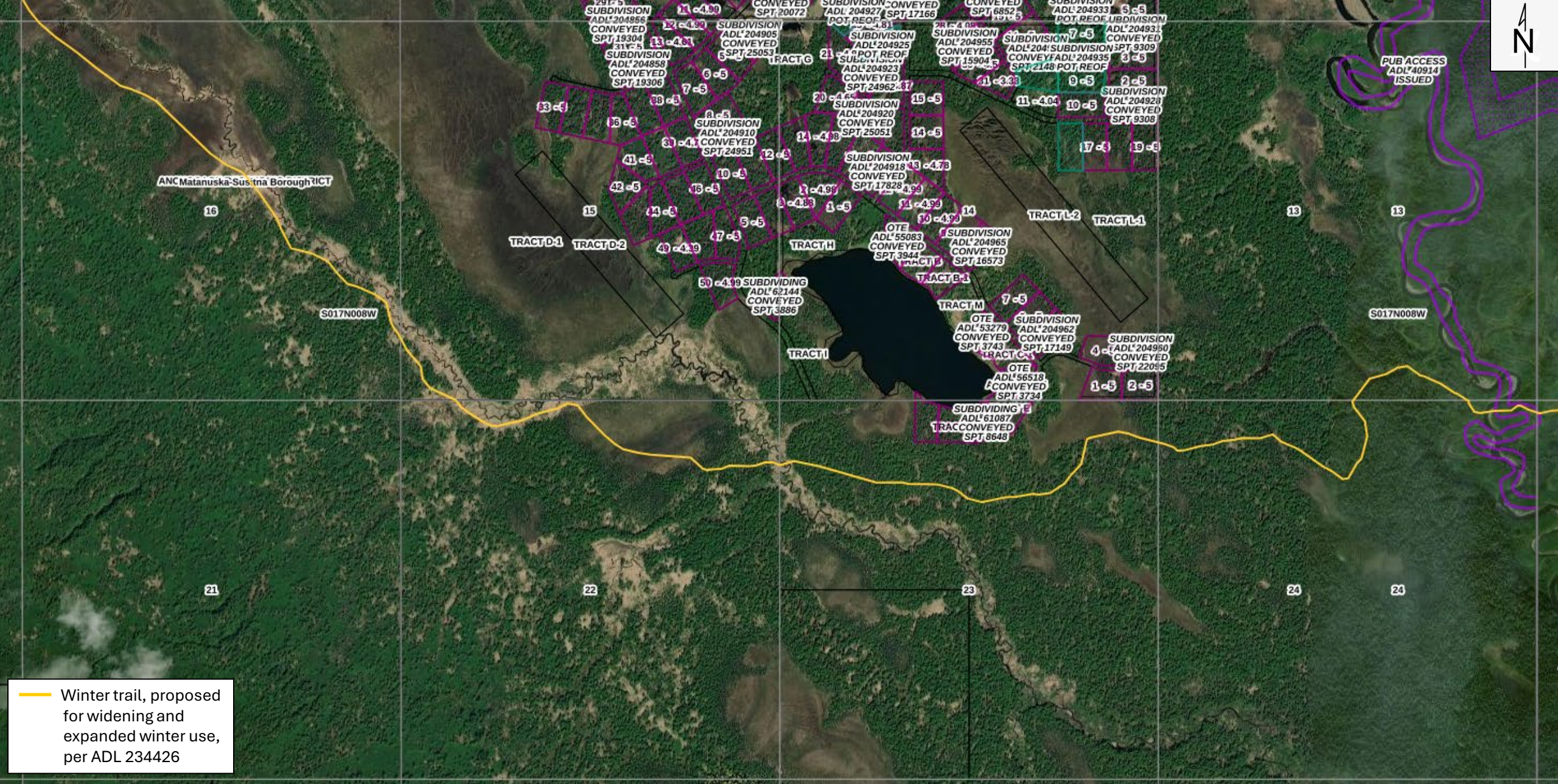
Date: 08-30-24

Friends of  
West Susitna



2





Affected Sections:  
 Section 24, Township 017N, Range 008W, Seward Meridian; Section 13, Township 017N, Range 008W, Seward Meridian;  
 Section 23, Township 017N, Range 008W, Seward Meridian; Section 22, Township 017N, Range 008W, Seward Meridian;  
 Section 15, Township 017N, Range 008W, Seward Meridian; Section 16, Township 017N, Range 008W, Seward Meridian.

## Winter Trail Improvement Project





— Winter trail, proposed for widening and expanded winter use, per ADL 234426

Affected Sections:  
Section 09, Township 017N, Range 008W, Seward Meridian; Section 08, Township 017N, Range 008W, Seward Meridian;  
Section 07, Township 017N, Range 008W, Seward Meridian; Section 06, Township 017N, Range 008W, Seward Meridian;  
Section 01, Township 017N, Range 009W, Seward Meridian.

# Winter Trail Improvement Project



Date: 08-30-24





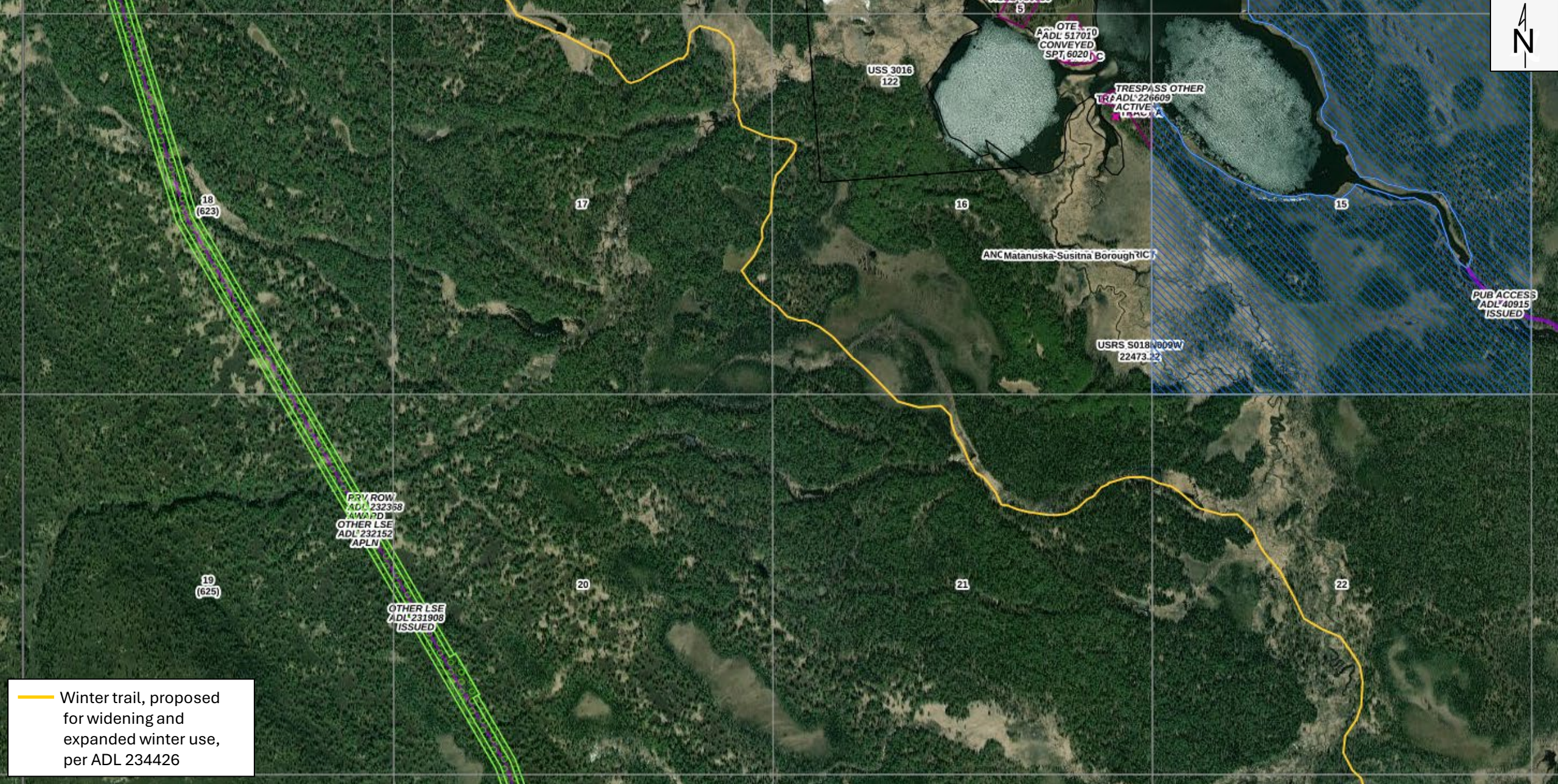
— Winter trail, proposed for widening and expanded winter use, per ADL 234426

Affected Sections:  
 Section 36, Township 018N, Range 009W, Seward Meridian; Section 35, Township 018N, Range 009W, Seward Meridian;  
 Section 26, Township 018N, Range 009W, Seward Meridian; Section 27, Township 018N, Range 009W, Seward Meridian.

## Winter Trail Improvement Project

Friends of West Susitna  Date: 08-30-24





— Winter trail, proposed for widening and expanded winter use, per ADL 234426

Affected Sections:  
 Section 22, Township 018N, Range 009W, Seward Meridian; Section 21, Township 018N, Range 009W, Seward Meridian;  
 Section 16, Township 018N, Range 009W, Seward Meridian; Section 17, Township 018N, Range 009W, Seward Meridian.

## Winter Trail Improvement Project

Friends of West Susitna  Date: 08-30-24





— Winter trail, proposed for widening and expanded winter use, per ADL 234426

Affected Sections:  
Section 08, Township 018N, Range 009W, Seward Meridian; Section 07, Township 018N, Range 009W, Seward Meridian;  
Section 06, Township 018N, Range 009W, Seward Meridian; Section 01, Township 018N, Range 010W, Seward Meridian.

## Winter Trail Improvement Project



Date: 08-30-24





— Winter trail, proposed for widening and expanded winter use, per ADL 234426

Affected Sections:  
Section 36, Township 019N, Range 010W, Seward Meridian; Section 35, Township 019N, Range 010W, Seward Meridian;  
Section 26, Township 019N, Range 010W, Seward Meridian; Section 27, Township 019N, Range 010W, Seward Meridian.


# Winter Trail Improvement Project

Friends of West Susitna  Date: 08-30-24

8





 Winter trail, proposed for widening and expanded winter use, per ADL 234426

Affected Sections:  
 Section 22, Township 019N, Range 010W, Seward Meridian; Section 15, Township 019N, Range 010W, Seward Meridian;  
 Section 16, Township 019N, Range 010W, Seward Meridian.

## Winter Trail Improvement Project



Date: 08-30-24





OTHER LSE  
ADL 231908  
ISSUED ROW  
1 YEAR 232368  
AWARD

6  
(609)

5

4

12

7  
(611)

8

9

— Winter trail, proposed  
for widening and  
expanded winter use,  
per ADL 234426

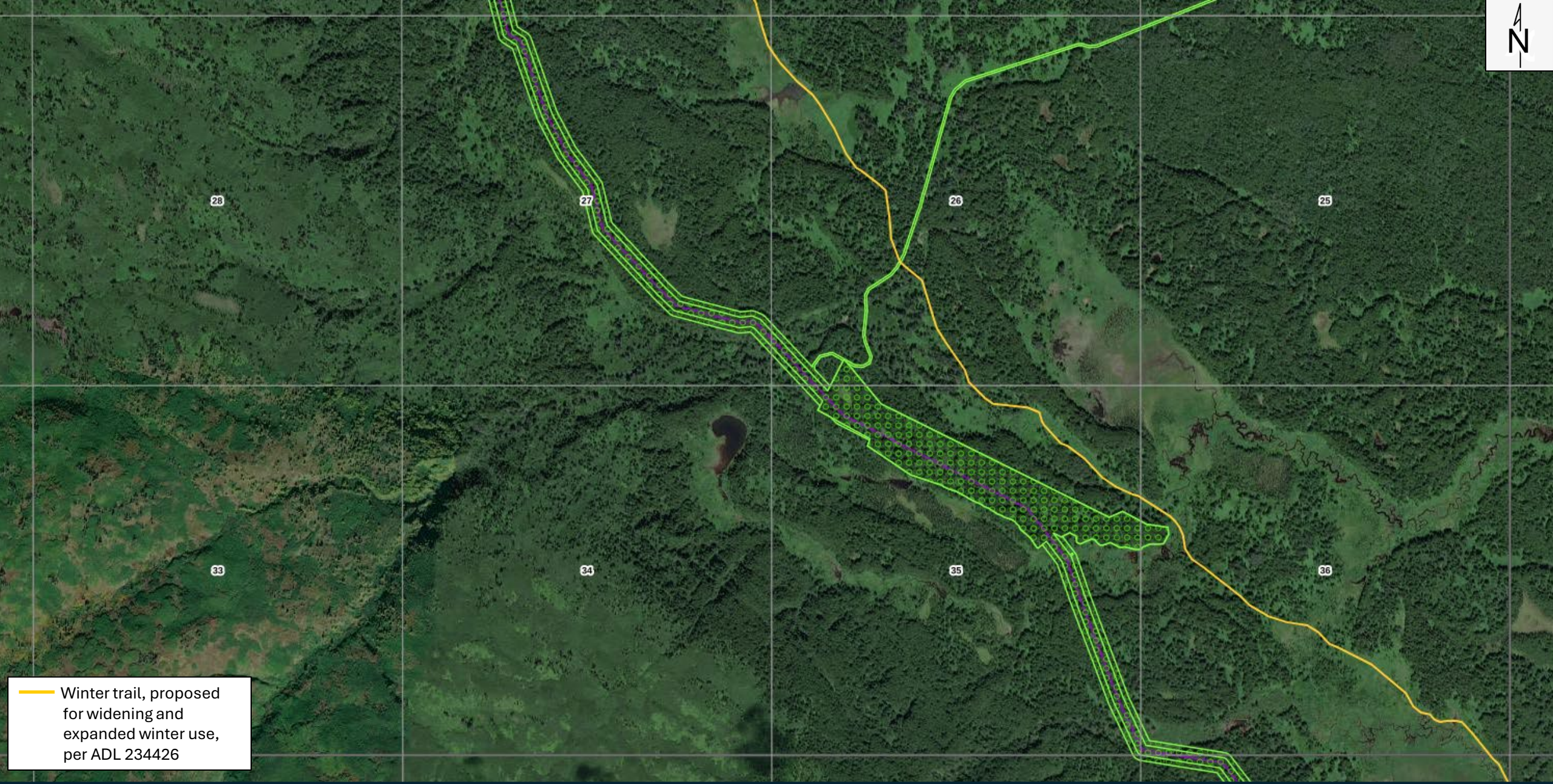
Affected Sections:  
Section 09, Township 019N, Range 010W, Seward Meridian; Section 08, Township 019N, Range 010W, Seward Meridian;  
Section 07, Township 019N, Range 010W, Seward Meridian; Section 06, Township 019N, Range 010W, Seward Meridian;  
Section 01, Township 019N, Range 011W, Seward Meridian.

# Winter Trail Improvement Project



Date:  
08-30-24





— Winter trail, proposed for widening and expanded winter use, per ADL 234426

Affected Sections:  
Section 36, Township 020N, Range 011W, Seward Meridian; Section 35, Township 020N, Range 011W, Seward Meridian;  
Section 26, Township 020N, Range 011W, Seward Meridian; Section 27, Township 020N, Range 011W, Seward Meridian.

# Winter Trail Improvement Project



Date: 08-30-24





— Winter trail, proposed for widening and expanded winter use, per ADL 234426

Affected Sections:  
 Section 22, Township 020N, Range 011W, Seward Meridian; Section 15, Township 020N, Range 011W, Seward Meridian;  
 Section 16, Township 020N, Range 011.

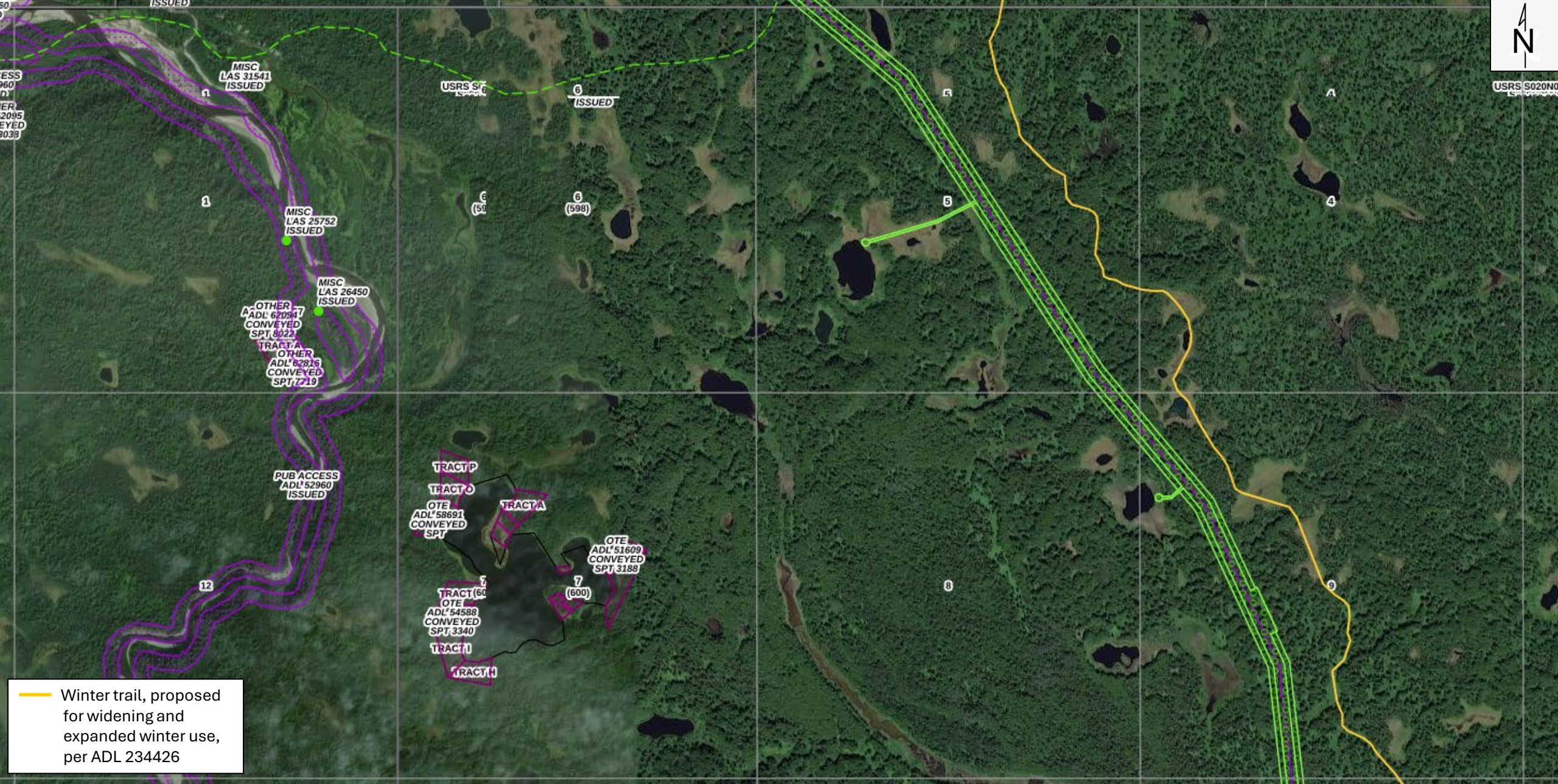
## Winter Trail Improvement Project

Friends of West Susitna



Date: 08-30-24

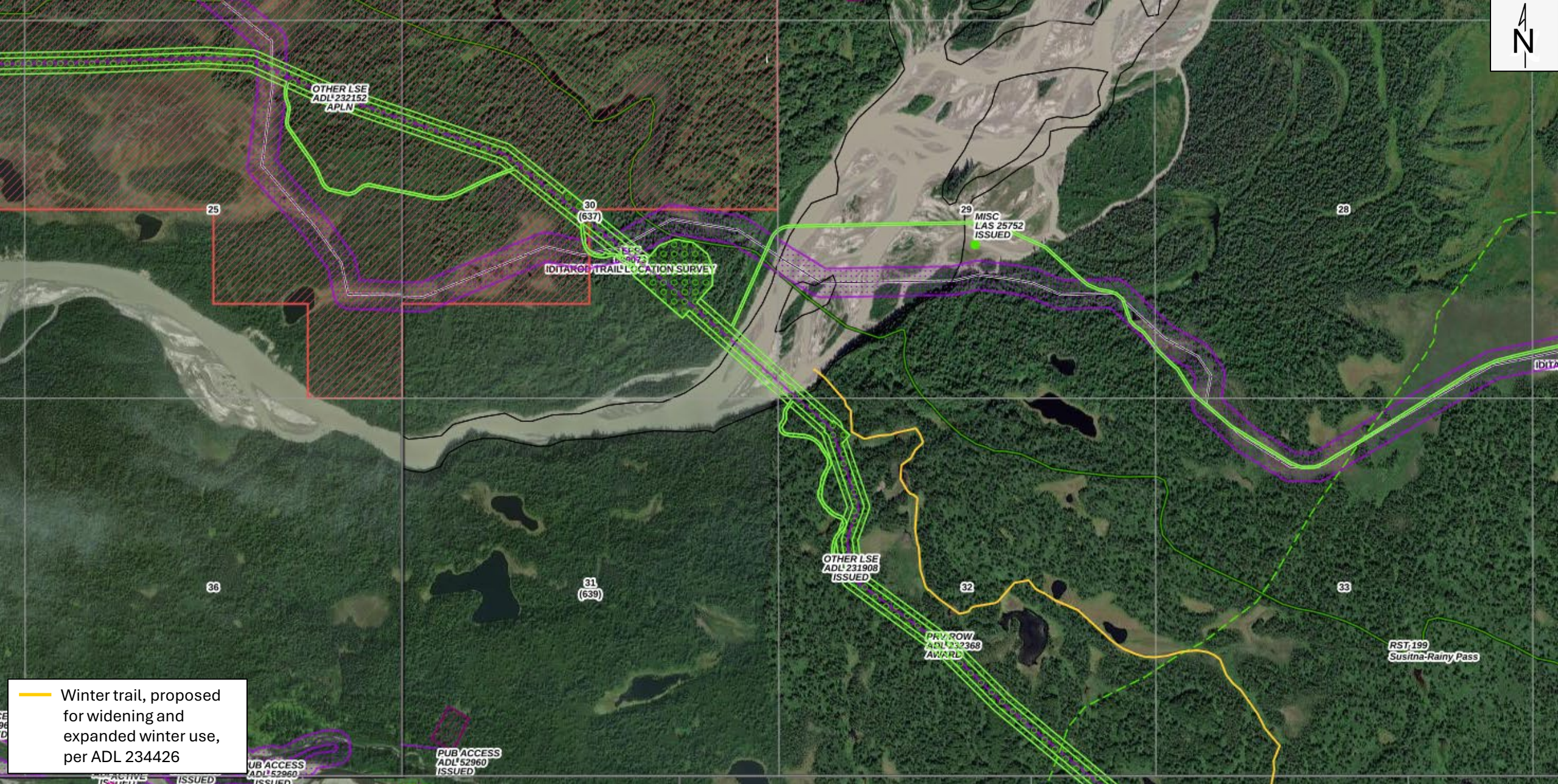




Affected Sections:  
 Section 09, Township 020N, Range 011W, Seward Meridian; Section 04, Township 020N, Range 011W, Seward Meridian;  
 Section 05, Township 020N, Range 011W, Seward Meridian.

## Winter Trail Improvement Project





— Winter trail, proposed for widening and expanded winter use, per ADL 234426

Affected Sections:  
 Section 33, Township 021N, Range 011W, Seward Meridian;  
 Section 32, Township 021N, Range 011W, Seward Meridian;  
 Section 29, Township 021N, Range 011W, Seward Meridian.

## Winter Trail Improvement Project



Date: 08-30-24