

NATIONAL GUARD FEDERAL SCOUT ARMORY REMEDIAL ACTION REPORT SAVOONGA, ALASKA

PREVIOUS SOIL AND POREWATER SAMPLE LOCATIONS AND EXCEEDANCES

LEGEND:

- Property Line
- Federal Scout Readiness Center (FSRC)
- Old FSRC
- Former Structures
- Former AST
- AST
- Day Tank
- Gravel Pad
- Soil concentrations exceeding ADEC-approved Alternative Cleanup Levels
- Tank Piping
- Other Building
- Unpaved Road
- Presumed Groundwater Flow Direction
- Former Drum Location

- #### Porewater Sample Location
- All results less than Table C cleanup levels
 - One or more result greater than Table C cleanup level

- #### Soil Sample Location
- DRO < 250 mg/kg
 - DRO ≥ 250 mg/kg, but < 3,000 mg/kg
 - DRO ≥ 3,000 mg/kg
 - DRO, BTEX, naphthalene, 1-methylnaphthalene, and 2-methylnaphthalene exceed alternative cleanup levels

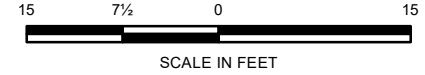
- #### Monitoring Well Locations Installed/Sampled in 2016
- All results less than Table C cleanup levels
 - One or more result greater than Table C cleanup level

- #### Abbreviations:
- AST aboveground storage tank
 - bgs below ground surface
 - DRO diesel-range organics
 - mg/kg milligrams per kilogram
 - mg/L milligrams per Liter
 - RRO residual range organics

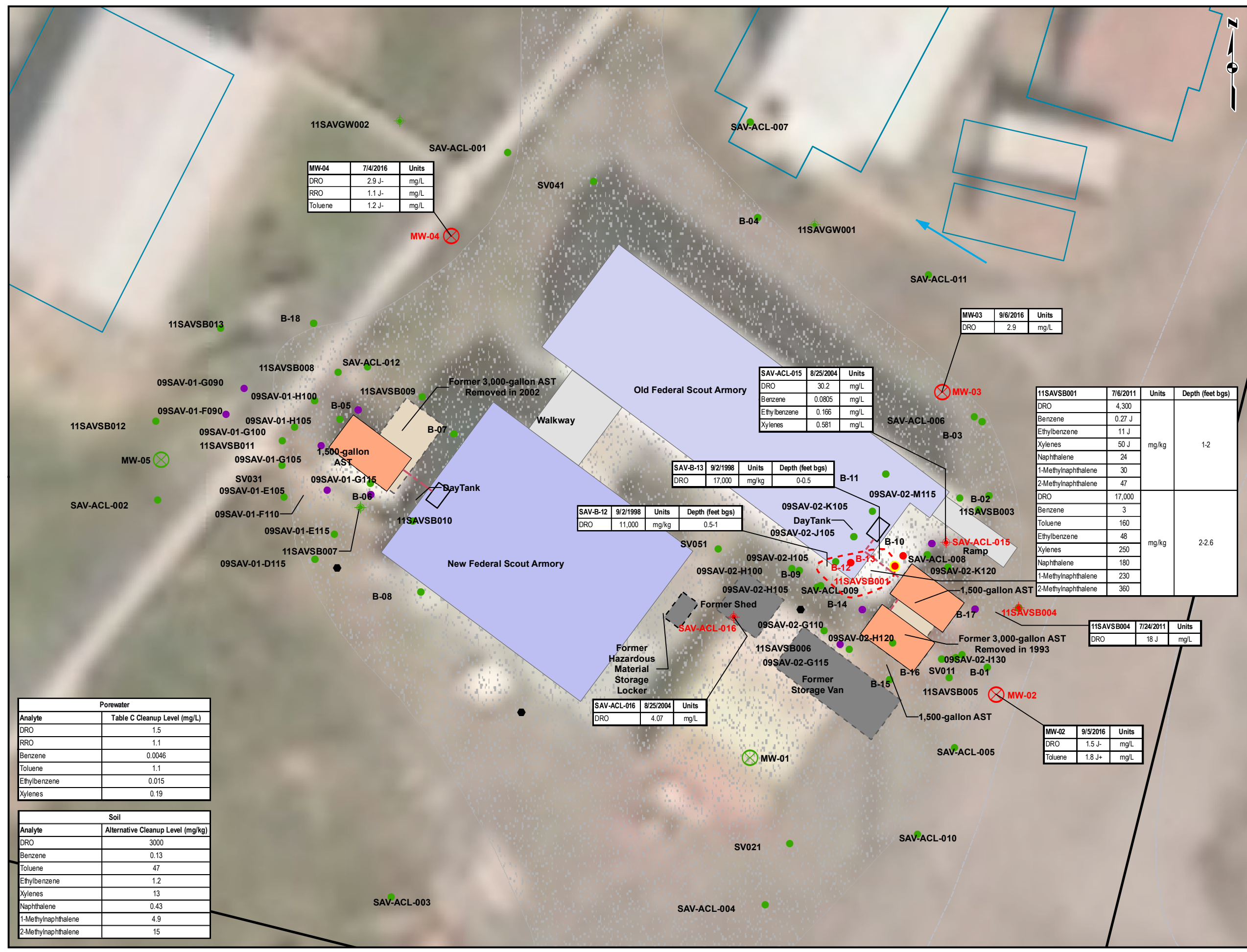
- #### Notes:
- Location of historical samples are approximate based on historical figures and on orthophotography courtesy of Alaska Department of Commerce, Division of Community & Regional Affairs (DCRA), 1-foot pixels.
 - All wells established prior to 2016 have been abandoned/removed.
 - Only porewater sample results with Table C exceedances are shown on figure.
 - Property boundary displayed is approximate.

- #### Chemistry Notes:
- J = estimated; the value is greater than or equal to the MDL and less than the LOQ, or the quantitation is an estimation due to discrepancies in meeting certain analyte-specific QC criteria
 - (+) = indicates that the result is potentially biased high
 - (-) = indicates that the result is potentially biased low

- #### References:
- Map produced using ESRI ArcMap v. 10.7.1.
 - Base imagery from ESRI (WV02, 50cm, 7/11/2014).
- ALASKA STATE PLANE ZONE 9**
HORIZONTAL DATUM: NAD83 (2011)
VERTICAL DATUM: NAVD88



PROJECT No.: 550501	DATE: 6/30/2023	FIGURE: 5
P.M.: MO	DRAWN: T.A.	



MW-04	7/4/2016	Units
DRO	2.9 J-	mg/L
RRO	1.1 J-	mg/L
Toluene	1.2 J-	mg/L

MW-03	9/6/2016	Units
DRO	2.9	mg/L

SAV-ACL-015	8/25/2004	Units
DRO	30.2	mg/L
Benzene	0.0805	mg/L
Ethylbenzene	0.166	mg/L
Xylenes	0.581	mg/L

SAV-B-13	9/2/1998	Units	Depth (feet bgs)
DRO	17,000	mg/kg	0-0.5

SAV-B-12	9/2/1998	Units	Depth (feet bgs)
DRO	11,000	mg/kg	0.5-1

11SAVSB001	7/6/2011	Units	Depth (feet bgs)
DRO	4,300		
Benzene	0.27 J		
Ethylbenzene	11 J		
Xylenes	50 J	mg/kg	1-2
Naphthalene	24		
1-Methylnaphthalene	30		
2-Methylnaphthalene	47		
DRO	17,000		
Benzene	3		
Toluene	160		
Ethylbenzene	48	mg/kg	2-2.6
Xylenes	250		
Naphthalene	180		
1-Methylnaphthalene	230		
2-Methylnaphthalene	360		

11SAVSB004	7/24/2011	Units
DRO	18 J	mg/L

MW-02	9/5/2016	Units
DRO	1.5 J-	mg/L
Toluene	1.8 J+	mg/L

Porewater	
Analyte	Table C Cleanup Level (mg/L)
DRO	1.5
RRO	1.1
Benzene	0.0046
Toluene	1.1
Ethylbenzene	0.015
Xylenes	0.19

Soil	
Analyte	Alternative Cleanup Level (mg/kg)
DRO	3000
Benzene	0.13
Toluene	47
Ethylbenzene	1.2
Xylenes	13
Naphthalene	0.43
1-Methylnaphthalene	4.9
2-Methylnaphthalene	15