

**OWNERSHIP LEGEND**

PROPOSED BURIED FIBER OPTIC CABLE:

- BLM
- PRIVATE
- STATE

SCALE IN FEET

0 1,250 2,500

**BRISTOL BAY TELEPHONE COOPERATIVE, INC.**

PREPARED BY UMIQ DESIGN ANCHORAGE, ALASKA

<b>BRISTOL BAY TELEPHONE COOPERATIVE</b>			
<b>PROJECT ACTIVITIES ON STATE OF ALASKA LANDS</b>			
LAKE AND PENINSULA BOROUGH, ALASKA			
DATE:	06/07/2024	DRAWN BY:	WDW
SCALE:	1" = 2,500'	CHECKED BY:	EM
SHEET:	<b>FIGURE 1.1</b>		
JOB No:	05-2037.01		





**OWNERSHIP LEGEND**

PROPOSED BURIED FIBER OPTIC CABLE:

- BLM
- PRIVATE
- STATE
- HDD BORING (APPROXIMATE)

**BRISTOL BAY TELEPHONE COOPERATIVE, INC.**

PREPARED BY UMIQA DESIGN ANCHORAGE, ALASKA

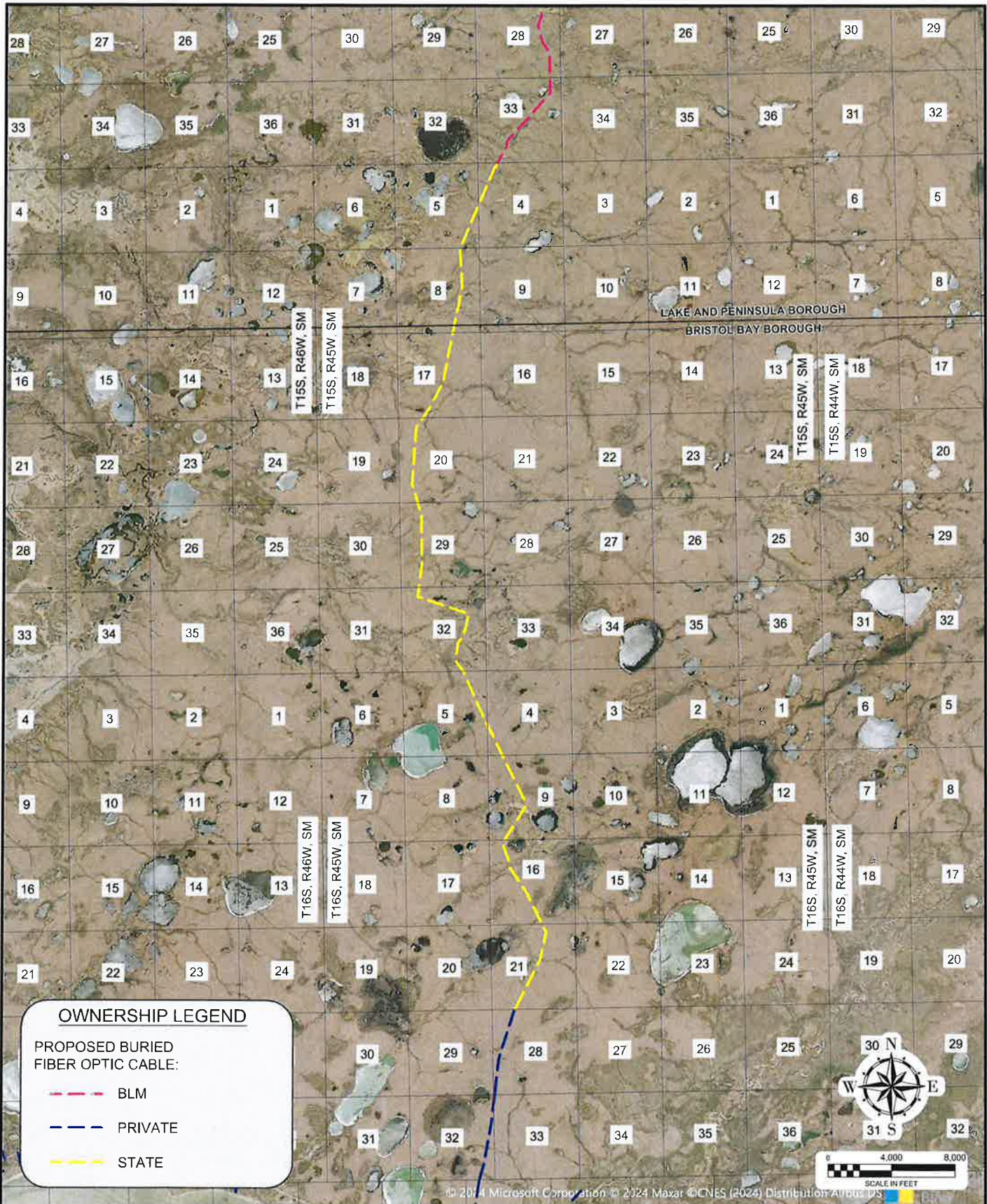
**BRISTOL BAY TELEPHONE COOPERATIVE**

**PROJECT ACTIVITIES ON STATE OF ALASKA LANDS**

LAKE AND PENINSULA BOROUGH, ALASKA

DATE:	06/07/2024	DRAWN BY:	WDW	SHEET:	<b>FIGURE 1.2</b>
SCALE:	1" = 5,000'	CHECKED BY:	EM	JOB No:	05-2037.01





**OWNERSHIP LEGEND**

PROPOSED BURIED  
FIBER OPTIC CABLE:

- - - BLM
- - - PRIVATE
- - - STATE

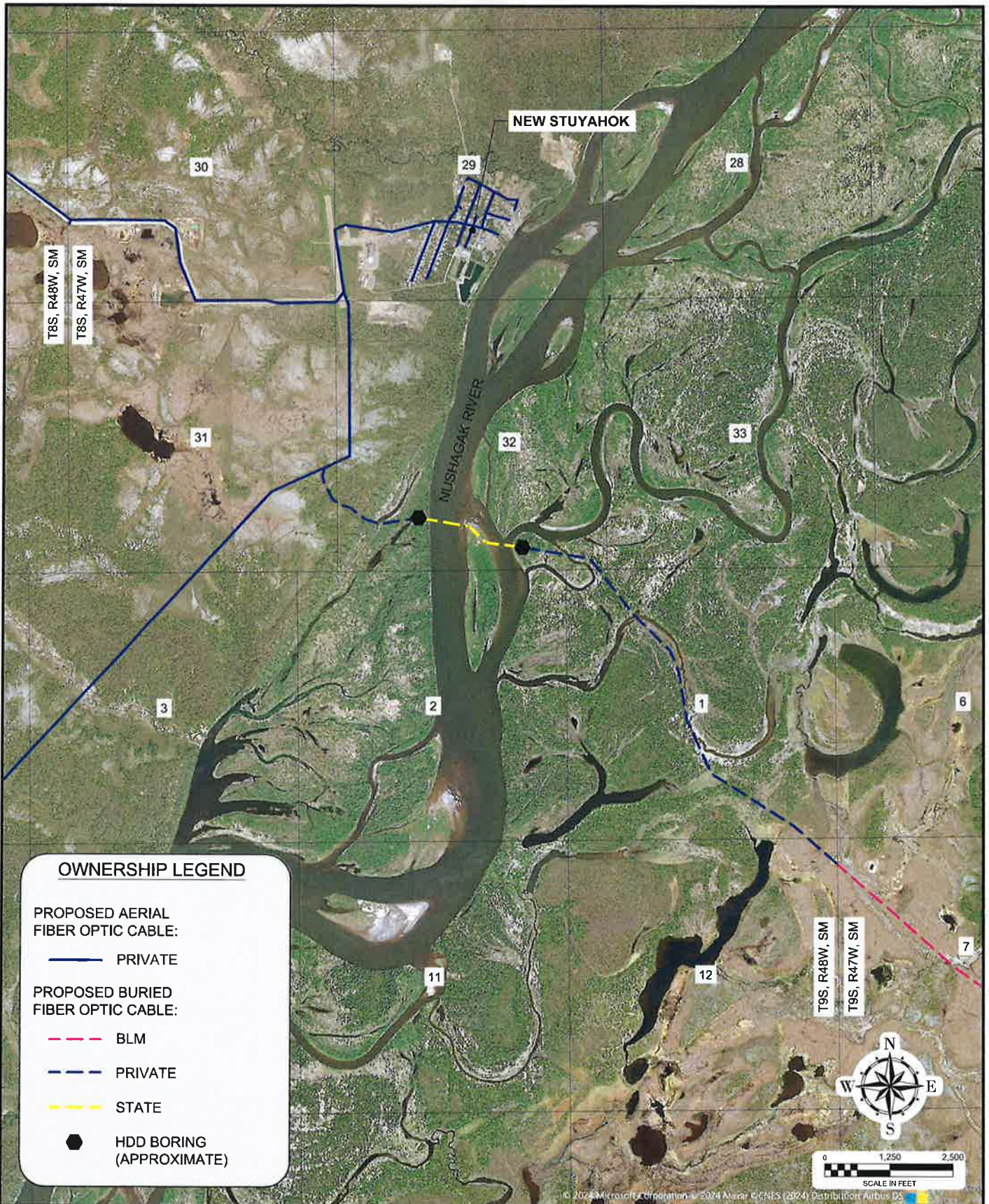
**BRISTOL BAY TELEPHONE COOPERATIVE  
PROJECT ACTIVITIES ON STATE OF ALASKA LANDS  
LAKE AND PENINSULA BOROUGH, ALASKA**

**BRISTOL BAY TELEPHONE  
COOPERATIVE, INC.**

PREPARED BY UMIQ DESIGN  
ANCHORAGE, ALASKA

DATE:	06/07/2024	DRAWN BY:	WDW	SHEET:	<b>FIGURE 1.3</b>
SCALE:	1" = 8,000'	CHECKED BY:	EM	JOB No:	05-2037.01





**OWNERSHIP LEGEND**

PROPOSED AERIAL FIBER OPTIC CABLE:

- PRIVATE

PROPOSED BURIED FIBER OPTIC CABLE:

- - - BLM
- - - PRIVATE
- - - STATE

● HDD BORING (APPROXIMATE)

0 1,250 2,500  
SCALE IN FEET

**BRISTOL BAY TELEPHONE COOPERATIVE, INC.**

PREPARED BY UMIQ DESIGN ANCHORAGE, ALASKA

<b>BRISTOL BAY TELEPHONE COOPERATIVE</b>			
<b>PROJECT ACTIVITIES ON STATE OF ALASKA LANDS</b>			
DILLINGHAM CENSUS AREA, ALASKA			
DATE:	06/07/2024	DRAWN BY:	WDW
SCALE:	1" = 2,500'	CHECKED BY:	EM
SHEET:	<b>FIGURE 1.4</b>		JOB No:
			05-2037.01