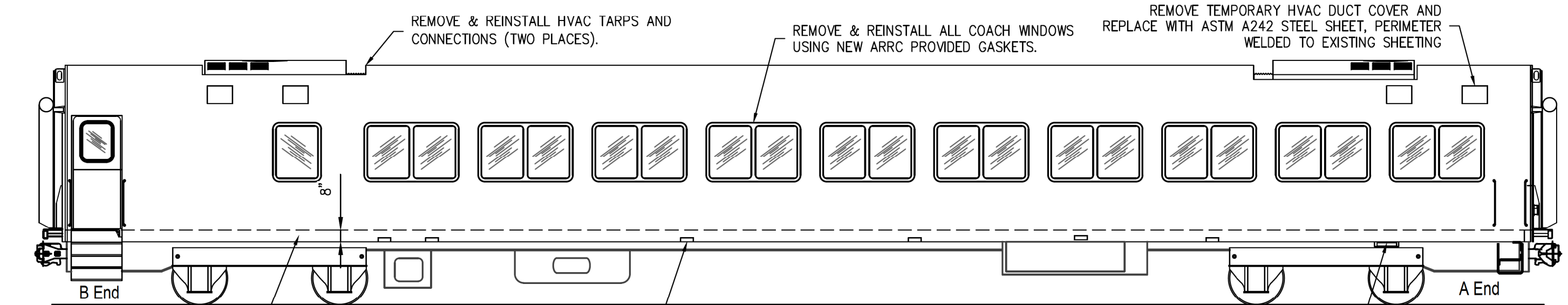


P:\Engineering\Motive Power and Equipment\2. Passenger Equipment Rehab\2023 Projects\ARR 207 & 208 Paint and Repairs\ARR 209 & 210 Paint and Repairs.dwg VPort: 11x17 Plot Style: -----



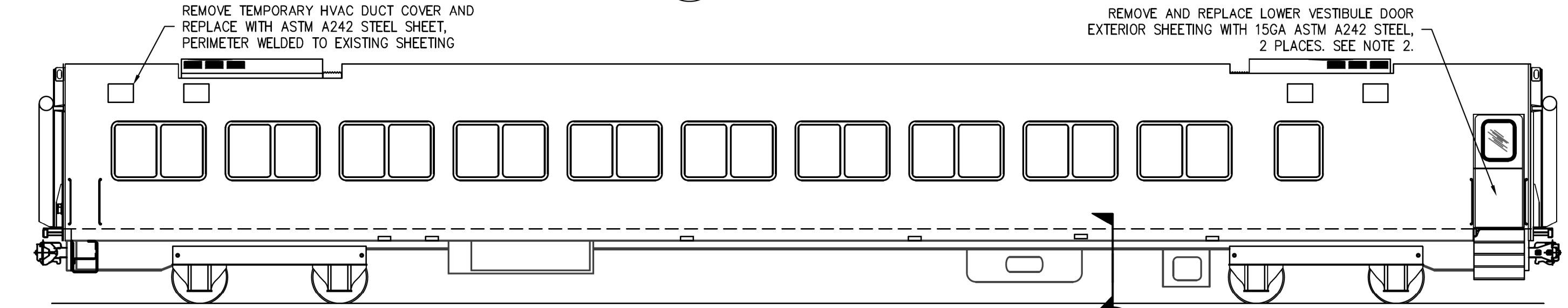
REMOVE AND REPLACE LOWER 8" OF SIDE SHEETING, FULL PERIMETER OF CAR. SEE DETAIL E2 & NOTE 1.

REMOVE & DISCARD METAL BADGES, BOTH SIDES OF CAR (14 PLACES)

REMOVE & REINSTALL AEI TAGS TO SAME LOCATION (EACH SIDE IS UNIQUE)

**A**  
1

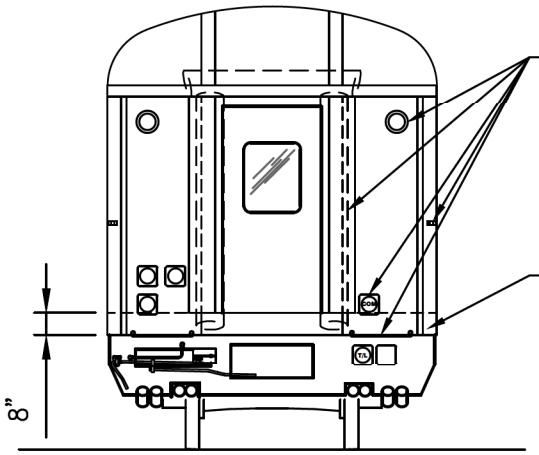
ARR 205-210 LEFT SIDE ELEVATION  
SCALE: NTS



**B**  
1

ARR 205-210 RIGHT SIDE ELEVATION  
SCALE: NTS

**A**  
2




REMOVE & REINSTALL ALL TRAINLINE RECEPTACLES, BLUE FLAG BRACKETS, INTER-CAR DIAPHRAGMS, END LIGHTS & GRAB IRONS AFTER REPAINTING.

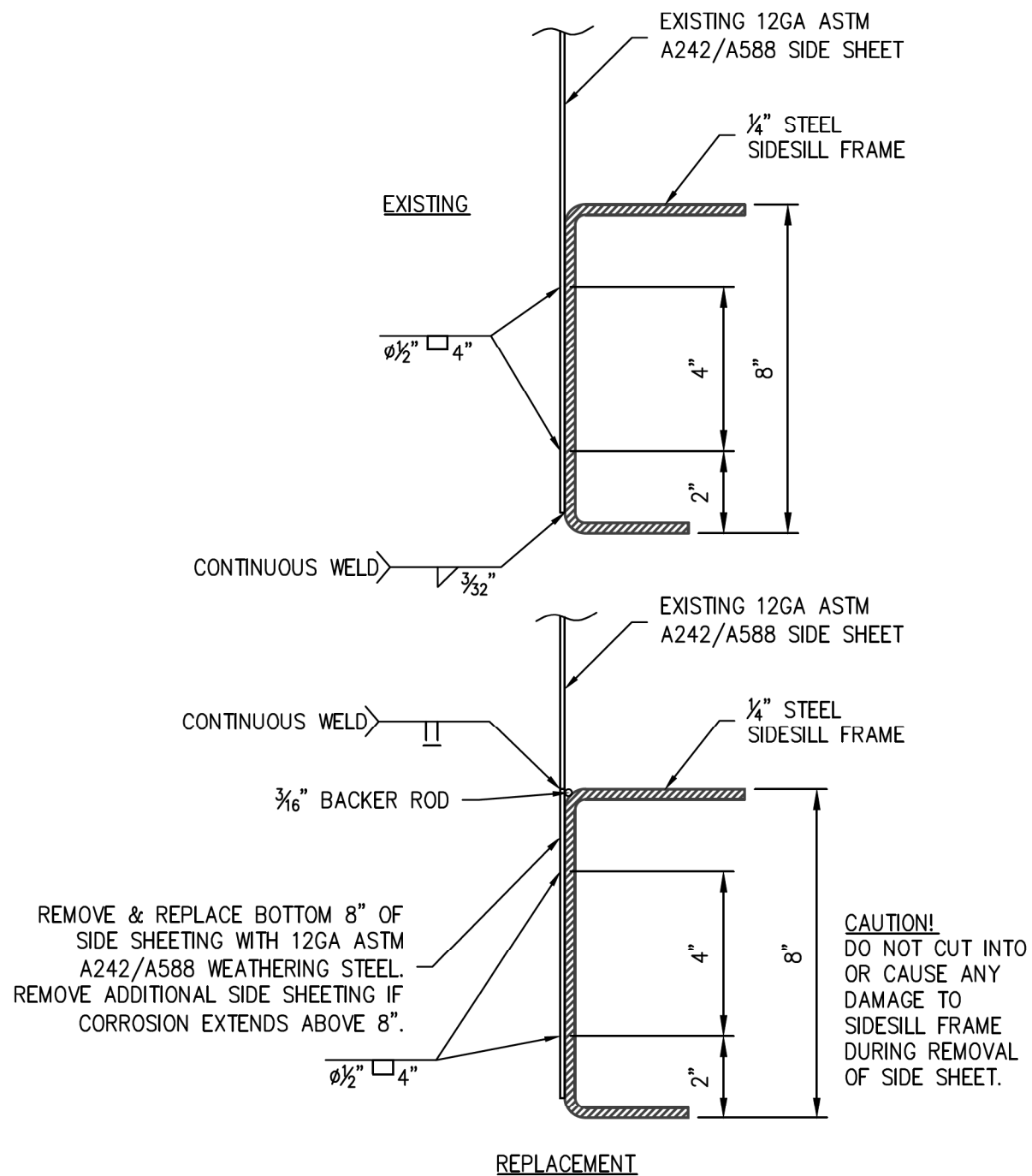
REMOVE AND REPLACE LOWER 8" OF END SILL SHEETING WHERE VISIBLY CORRUGATED OR SHOWING SIGNS OF DECAY.

**C**  
1

ARR 205-210 TYPICAL END ELEVATION  
SCALE: NTS

REV.	DATE	BY	REVISION

 <b>ALASKA RAILROAD CORPORATION</b> ENGINEERING SERVICES P.O. BOX 107500, ANCHORAGE, ALASKA 99510-7500			
PROJECT : <b>MOTIVE POWER AND EQUIPMENT PASSENGER COACHES</b>			
TITLE: <b>ARR 205-210 PAINT AND REPAIRS ELEVATION VIEWS</b>			
DESIGNED BY: CDL	SCALE : AS NOTED	DWG NO.	
CHECKED BY: ARRC	DATE : OCT 2022	1 OF 3	
APPROVED BY: ARRC			



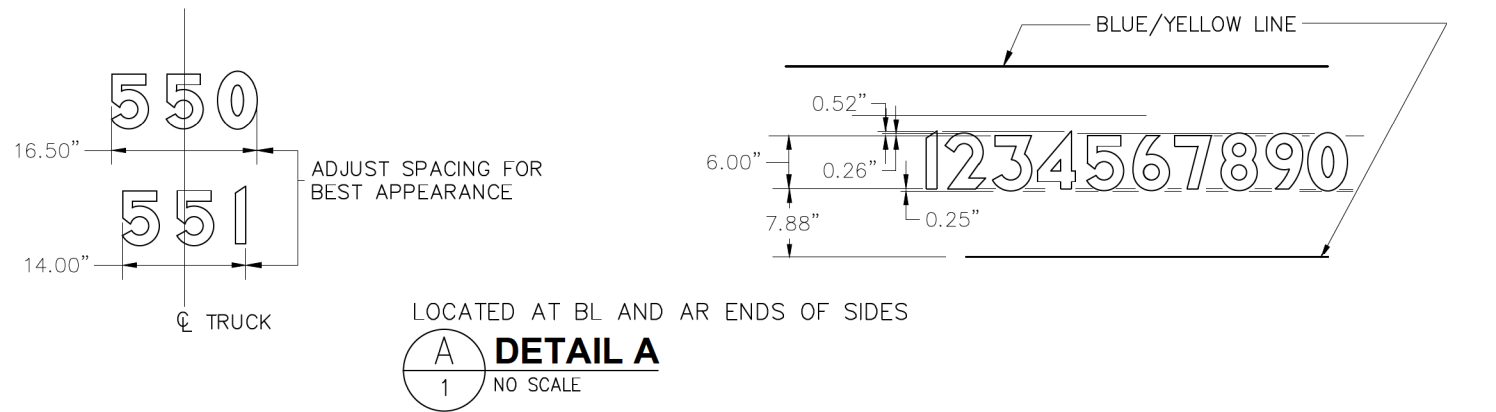
A  
2 SIDE SILL SECTION; EXISTING & REPLACEMENT  
SCALE: NTS

NOTES:

1. SIDESILL REPAIR TO BE COMPLETED IN SECTIONS NOT EXCEEDING 20' AT A TIME.
2. AREA OF SIDESILL REPAIR MUST BE SUPPORTED WITH JACKS SUPPORTING SIDESILL STRUCTURE SPACED NOT MORE THAN 4' OC TO PREVENT LOSS OF CARBODY CAMBER DURING REPAIR.
3. JACKS SHOULD BE PLACED AT ALL FOUR CORNERS OF CAR TO BALANCE CAR Laterally.
4. ANY DAMAGE CAUSED TO THE SIDESILL DURING SHEETING REMOVAL MUST BE FILLED WITH CLEAN WELD MATERIAL AND GROUND SMOOTH TO RESTORE ORIGINAL SIDESILL THICKNESS.
5. AFTER SIDE SHEET REMOVAL, SIDESILL CORROSION MUST BE REMOVED WITH GRIT BLASTING TO WHITE METAL SURFACE THEN PAINTED WITH WELD-THROUGH PRIMER PRIOR TO REPLACING SHEETING.
6. LOWER VESTIBULE DOOR EXTERIOR SHEETING TO BE REMOVED AND REPLACED TO OEM SPECS AND DIMENSIONS AS SHOWN IN ATTACHED OEM DRAWING 115492, WITH THE EXCEPTION OF REPLACEMENT DOOR INSULATION TO BE 1 1/4" MINERAL WOOL BATT INSTEAD OF FIBERGLASS.

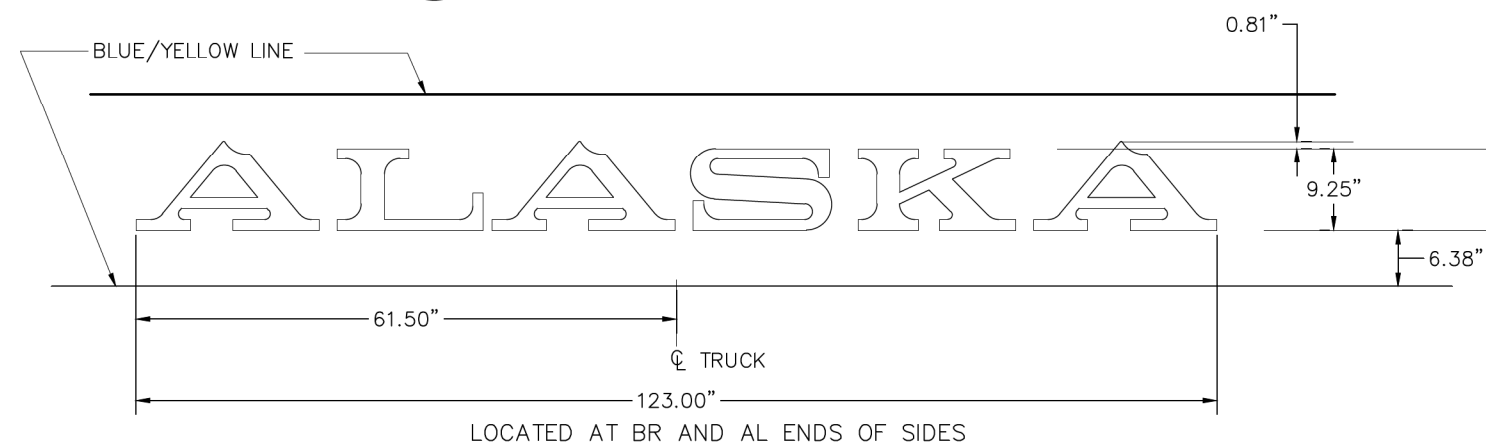
REV.	DATE	BY	REVISION

<b>ALASKA RAILROAD CORPORATION</b> ENGINEERING SERVICES P.O. BOX 107500, ANCHORAGE, ALASKA 99510-7500			
PROJECT : <b>MOTIVE POWER AND EQUIPMENT PASSENGER COACHES</b>			
TITLE: <b>ARR 205-210 PAINT AND REPAIRS DETAILS AND NOTES</b>			
DESIGNED BY: <u>CDL</u>	SCALE : AS NOTED	DWG NO.	
CHECKED BY: <u>ARRC</u>	DATE : OCT 2022	<b>2</b> OF <b>3</b>	
APPROVED BY: <u>ARRC</u>			



**DETAIL A**  
1 NO SCALE

- GENERAL NOTES:**
- DO NOT PAINT STAINLESS STEEL, OTHER BRIGHT METAL, COUPLERS OR WHEELS.
  - ALL PAINTING TO BE IN ACCORDANCE WITH ARRC SPECIFICATION FOR PAINTING OF ROLLING STOCK.
  - COLOR CODE FOR TRAINLINE RECEPTACLES:  
 COMMUNICATIONS LIGHT BLUE  
 DUMMY WHITE  
 POWER RED  
 LOCOMOTIVE MU YELLOW
  - DETAILS OF GRAPHICS ARE DOCUMENTED IN THE AUTOCAD FILE OF THIS DRAWING.
  - DIMENSIONS SHOWN IN DETAIL D APPLY AT BODY BOLSTERS. LINES ARE TO FOLLOW CARBODY CAMBER.
  - INTERIOR OF VESTIBULES ARE CONSIDERED EXTERIOR. VERTICAL SURFACES AND CEILINGS ARE TO BE PAINTED BLUE.
  - PAINT ALL UNDER CAR EQUIPMENT BLACK, TRUCKS TO BE PAINTED ALUMINUM SILVER.
  - STAINLESS STEEL GRAB-IRONS TO REMAIN UNPAINTED, MILD STEEL GRAB IRONS MOUNTED TO A OR B ENDS PAINTED YELLOW.
  - AEI TAGS (2) ARE SIDE SPECIFIC; MARK AND REPLACE TO SAME SIDE, SAME LOCATION.
  - NEW RETRO-REFLECTIVE EMERGENCY ACCESS SIGNS WILL BE INSTALLED BY ALASKA RAILROAD.
  - DRAWING DOES NOT PURPORT TO SHOW CONSTRUCTION IN ABSOLUTE AND COMPLETE DETAIL.

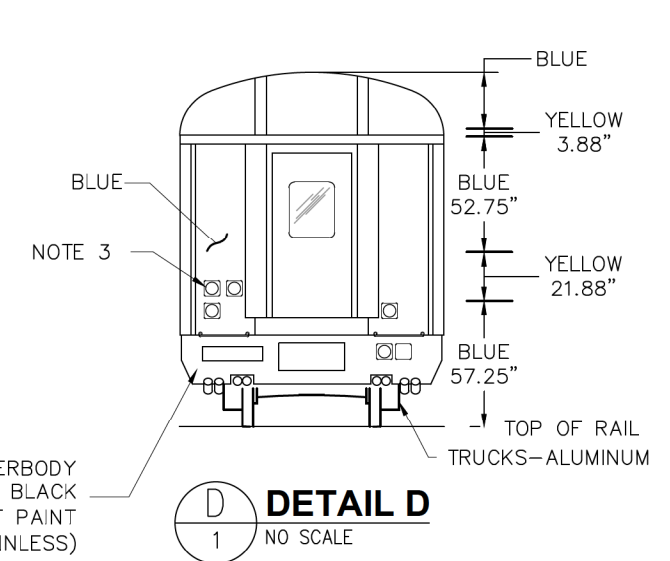
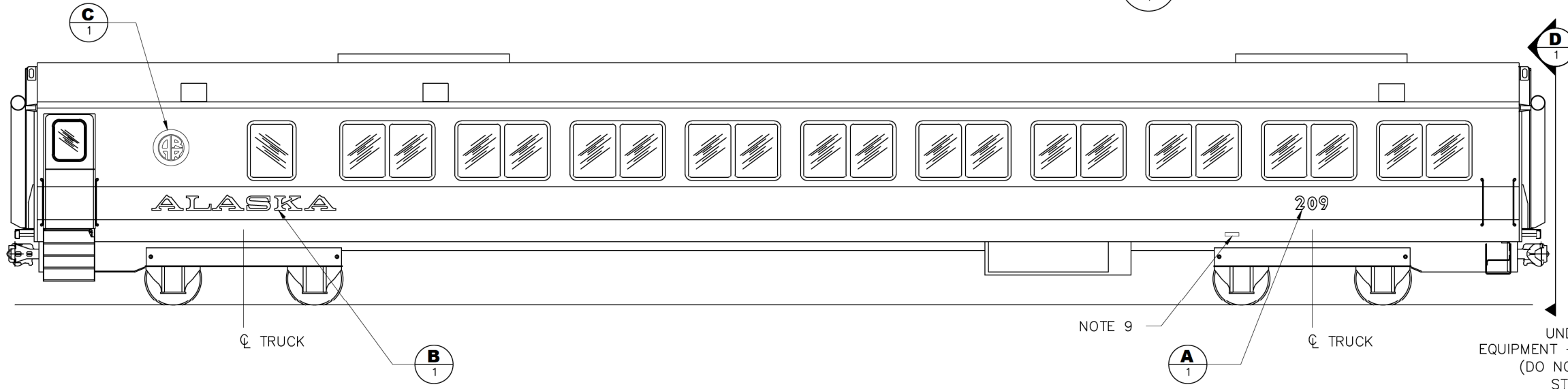


**DETAIL B**  
1 NO SCALE



24" DIAMETER LOGOTYPE.  
 HORIZONTAL POSITION: CENTERED BETWEEN VESTIBULE DOOR AND FIRST WINDOW, LOCATED ONLY ON BL END.  
 VERTICAL POSITION: CENTERED IN 52.75" BLUE STRIPE.

**DETAIL C**  
1 NO SCALE



**DETAIL D**  
1 NO SCALE

<b>ALASKA RAILROAD CORPORATION</b> ENGINEERING SERVICES P.O. BOX 107500, ANCHORAGE, ALASKA 99510-7500			
PROJECT : <b>MOTIVE POWER AND EQUIPMENT PASSENGER COACHES</b>			
TITLE: <b>ARR 205-210 PAINT AND REPAIR PAINT AND STENCIL ARRANGEMENT</b>			
DESIGNED BY: CDL	SCALE : AS NOTED	DWG NO.	
CHECKED BY: ARRC	DATE : OCT 2022	3 OF 3	
APPROVED BY: ARRC			

REV.	DATE	BY	REVISION