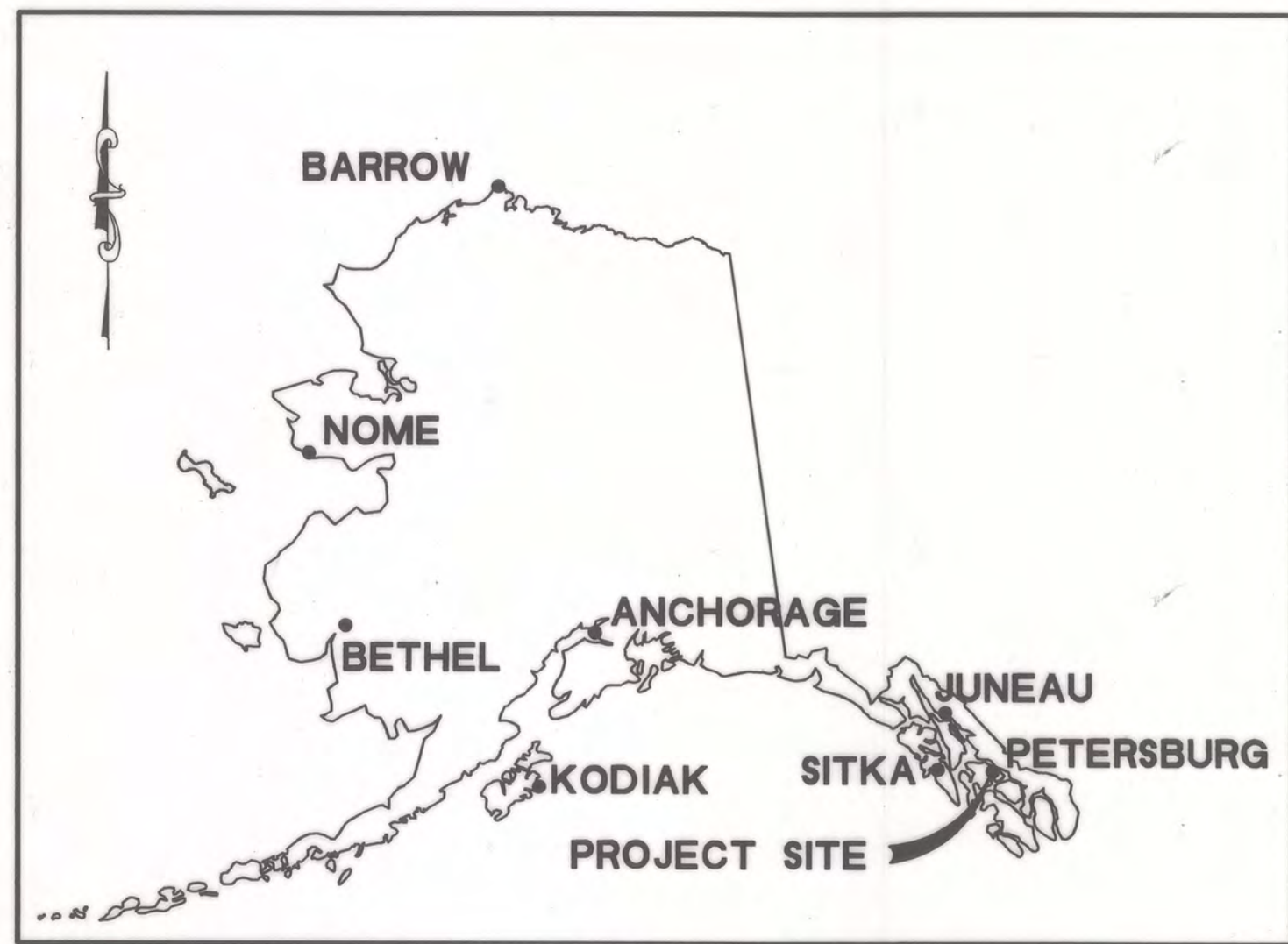
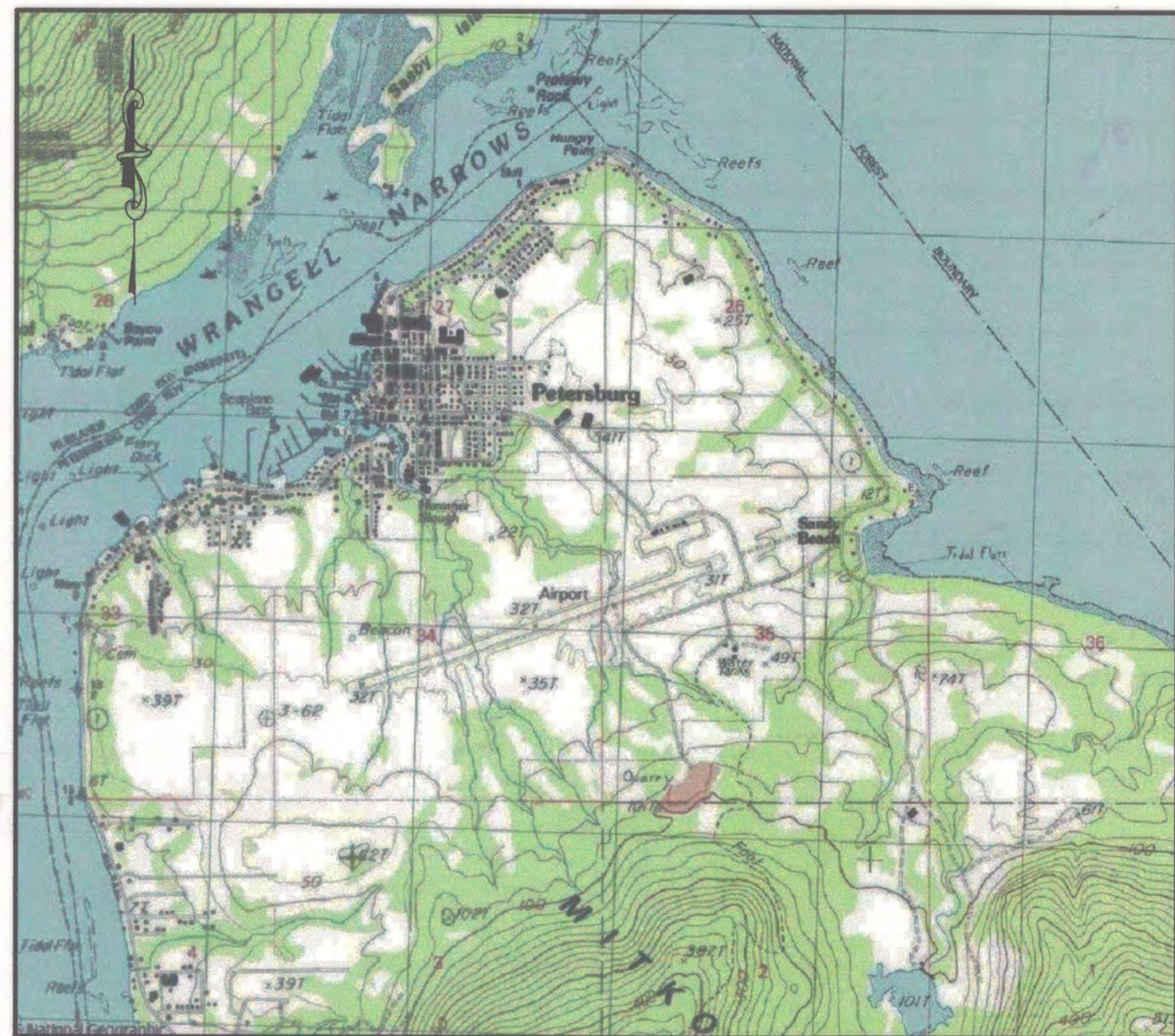


ATTACHMENT 4

AIRPORT LAYOUT PLAN



LOCATION MAP
NO SCALE



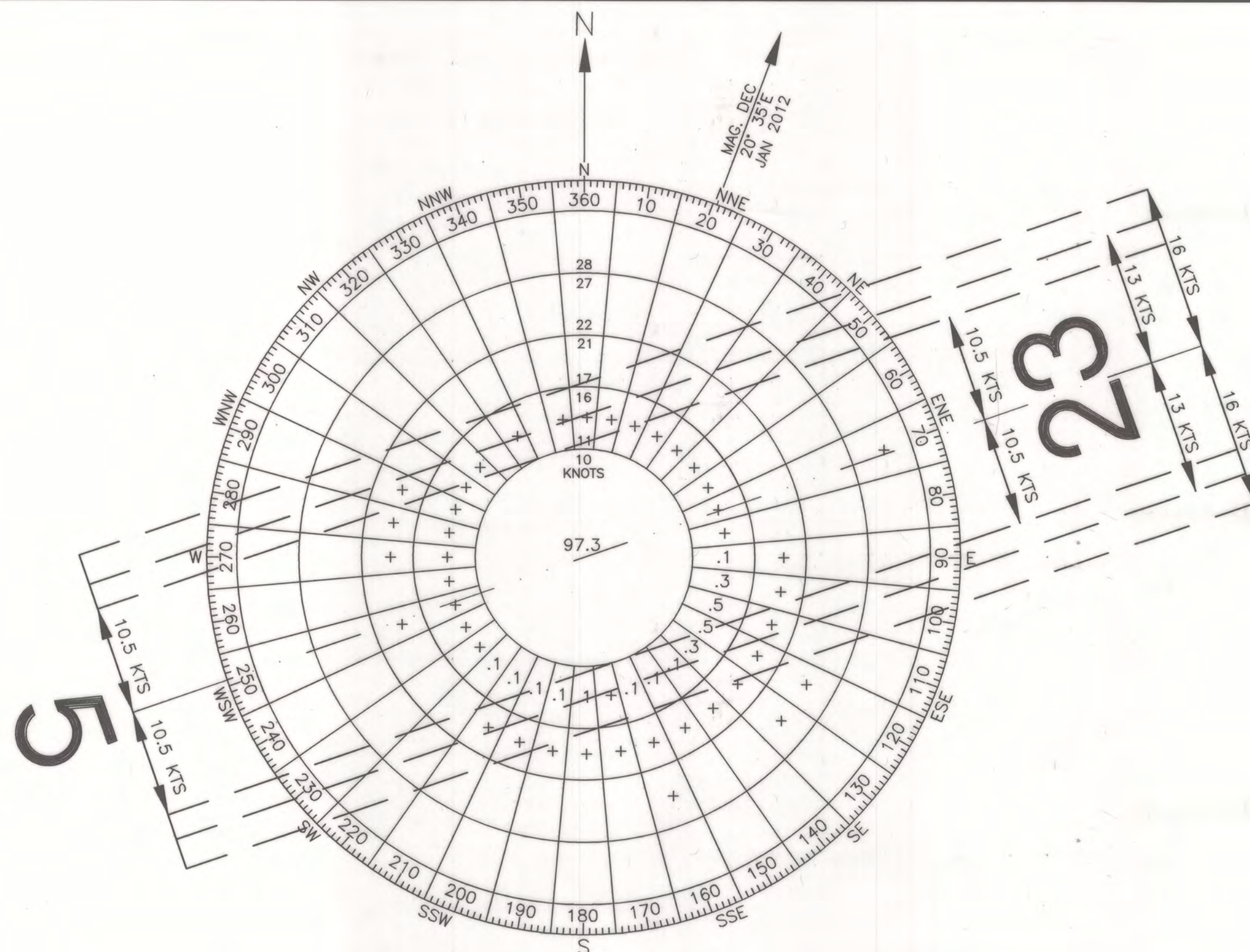
VICINITY MAP
T58S, R79E, SEC. 34 & 35
USGS PETERSBURG D-3
1" = 1 MILE

SHEET INDEX

TITLE	NO.
TITLE SHEET	1
EXISTING AIRPORT LAYOUT DRAWING	2
ULTIMATE AIRPORT LAYOUT DRAWING	3
AIRPORT AIRSPACE (PART 77) DRAWING	4
INNER PORTION OF THE APPROACH SURFACE DRAWING - RUNWAY 5	5
INNER PORTION OF THE APPROACH SURFACE DRAWING - RUNWAY 23	6
TERMINAL AREA PLAN	7
LAND USE DRAWING	8
AIRPORT PROPERTY MAP	9

NOTES:

- ALL COORDINATES AND ELEVATIONS LISTED ARE CERTIFIED TO FAA 1A ACCURACY.



HELIPORT DATA TABLE

ITEM	EXISTING	ULTIMATE
DESIGN AIRCRAFT	-	LIGHT TURBINE
MAX. GROSS WEIGHT	-	5000 LB
MAX. ROTOR DIAMETER	-	50'
MAX. LENGTH	-	50'
FINAL APPROACH AND TAKEOFF AREA (FATO)	-	75' X 75'
SAFETY AREA	-	105' X 105'
PROTECTION ZONE	-	75' X 105' X 280'

WIND DATA TABLE

RUNWAY	10.5 kt	13 kt	16 kt	20 kt
5-23	98.83%	99.57%	99.94%	-

SOURCE: NATIONAL OCEANIC & ATMOSPHERIC ADMINISTRATION NATIONAL CLIMATIC DATA CENTER FOR 70366 PETERSBURG, AK
PERIOD: 1993 - 2002

AIRPORT DATA TABLE

ITEM	EXISTING	UTIMATE
ICAO IDENTIFIER	-	PAPG
NATIONAL AIRPORT IDENTIFIER	-	PSG
FAA SITE NUMBER	-	50590.2*A
AIRPORT ELEVATION NAVD88	113.2'	113.2'
AIRPORT REFERENCE CODE	C - III	C - III
MEAN MAX. TEMPERATURE, HOTTEST MONTH *	-	63.6°F IN JULY
AIRPORT AND TERMINAL NAVIGATION AIDS	-	ROTATING BEACON, VOR/DME, NDB, LDA/DME-D, AWOS, GPS
TAXIWAY LIGHTING/MARKING	-	MITL
RAMP LIGHTING	-	EDGE & FLOODLIGHTING
OBSTRUCTION SURVEY SOURCE & TYPE	-	R&M CONSULTANTS, INC. 2010/ VERTICALLY GUIDED AIRPORT AIRSPACE ANALYSIS SURVEY
MAGNETIC DECLINATION, YEAR, RATE OF CHANGE **	-	20°35'E, JANUARY 2012 0°18'W/YEAR

DATA FROM (*) THE WESTERN REGIONAL CLIMATE CENTER (**) NATIONAL GEOPHYSICAL DATA CENTER

MODIFICATION TO STANDARDS/ NON STANDARD CONDITIONS

DESCRIPTION	STANDARD	EXISTING	ULTIMATE
RUNWAY SAFETY AREA LENGTH	8000'	7200'	7200'

RUNWAY DATA TABLE

ITEM	RW 5-23			
	EXISTING		ULTIMATE	
	5	23	5	23
RUNWAY TYPE UTILITY OR OTHER THAN UTILITY	OTHER THAN UTILITY		SAME	
FAR PART 77 APPROACH CATEGORY (V, NPI, P)	NPI		SAME	
APPROACH SURFACES	20:1	34:1	34:1	SAME
VISIBILITY MINIMUM	> 2 MILE		≥ 1 MILE	
RUNWAY SURFACE	ASPHALT		SAME	
PAVEMENT STRENGTH SW, DW, DTW, DDTW X 1000LBS	75 SW, 160 DW		SAME	
AIRCRAFT APPROACH CATEGORY	C		SAME	
AIRPLANE DESIGN GROUP	III		SAME	
RUNWAY DIMENSIONS	6400' X 150'		SAME	
TRUE BEARING	S70°08'44"W		SAME	
EFFECTIVE GRADE	0.07%		SAME	
RUNWAY SAFETY AREA (RSA) DIMENSIONS	7200' X 500'		SAME	
LENGTH BEYOND R/W ENDS	600'		SAME	
RUNWAY PROTECTION ZONE (RPZ) DIMENSIONS	1700' X 500' X 1010'		SAME	
RUNWAY OBJECT FREE AREA (ROFA) DIMENSIONS	8400' X 800'		SAME	
LENGTH BEYOND R/W ENDS OR STOPWAYS	1000'		SAME	
RUNWAY OBSTACLE FREE ZONE (OFZ) DIMENSIONS	6800' X 400'		SAME	
RUNWAY LIGHTING TYPE	HIRL		SAME	
RUNWAY MARKING TYPE	NPI	P	SAME	
RUNWAY VISUAL APPROACH AIDS	PAPI, REIL	PAPI, MALS, GPS	PAPI, MALS, GPS	SAME
TOUCHDOWN ELEVATION NAVD88	113.2'	108.5'	SAME	

GEOGRAPHIC COORDINATES TABLE

ITEM	EXISTING* LATITUDE	EXISTING* LONGITUDE	ULTIMATE* LATITUDE	ULTIMATE* LONGITUDE
AIRPORT REFERENCE POINT	56°48'05.30"N	132°56'46.44"W	SAME	SAME
THRESHOLD 5	56°47'54.90"N	132°57'40.69"W	SAME	SAME
THRESHOLD 23	56°48'15.69"N	132°55'52.17"W	SAME	SAME

*NAD83

AIRPORT SURVEY CONTROL

MONUMENT	LATITUDE	LONGITUDE	ELEVATION
PSG D (PACS)	56°48'12.30"N	132°56'03.95"W	100.3'
PSG E (SACS)	56°48'03.94"N	132°56'47.64"W	104.2'
PSG F (SACS)	56°47'55.34"N	132°57'32.67"W	109.3'

LEGEND

ITEM	EXISTING	ULTIMATE
AIRPORT REFERENCE POINT		
ANTENNA/TOWER		
BUILDING		
BUILDING RESTRICTION LINE		
FENCE		
FLOOD LIGHT		
LEASE LOT		
PAPI		
PROPERTY LINE		
REIL		
ROADWAYS		
ROTATING BEACON		
RUNWAY/TAXIWAY CENTERLINE		
SHORELINE		
SURVEY MONUMENT		
THRESHOLD LIGHTS		
TOPOGRAPHIC CONTOURS		
TREE (LARGE SINGLE)		
TREELINE		
WINDCONE		
WINDCONE WITH SEGMENTED CIRCLE		

PETERSBURG JAMES A. JOHNSON AIRPORT

TITLE SHEET

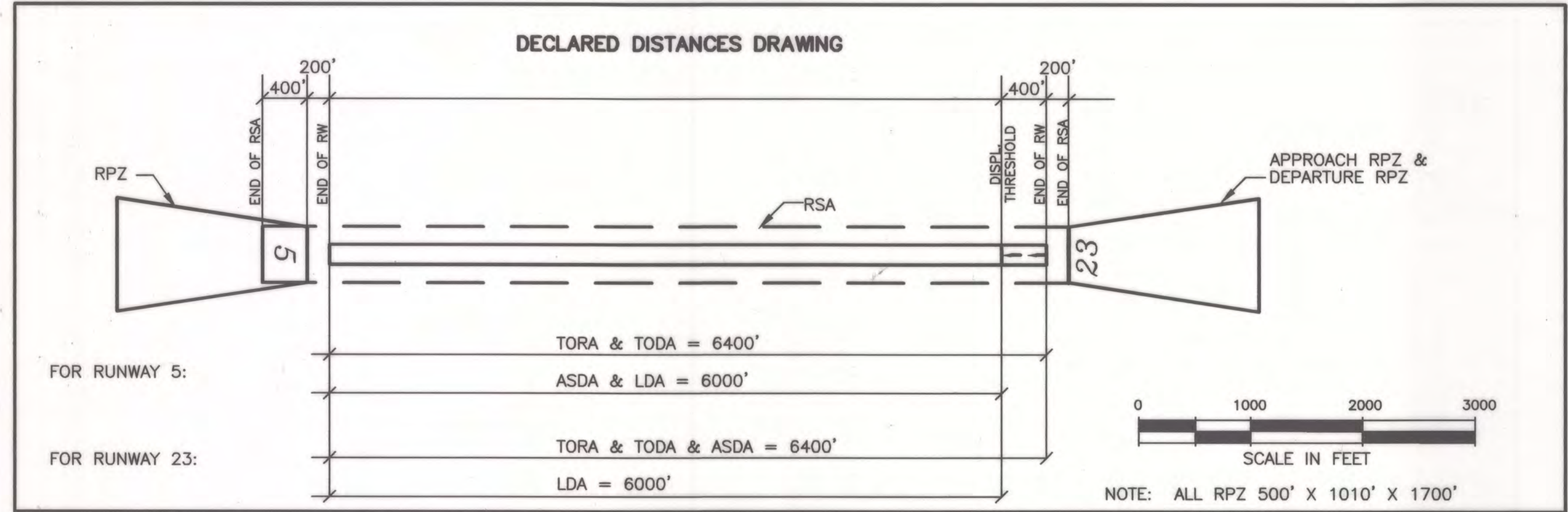
SHEET

1

OF

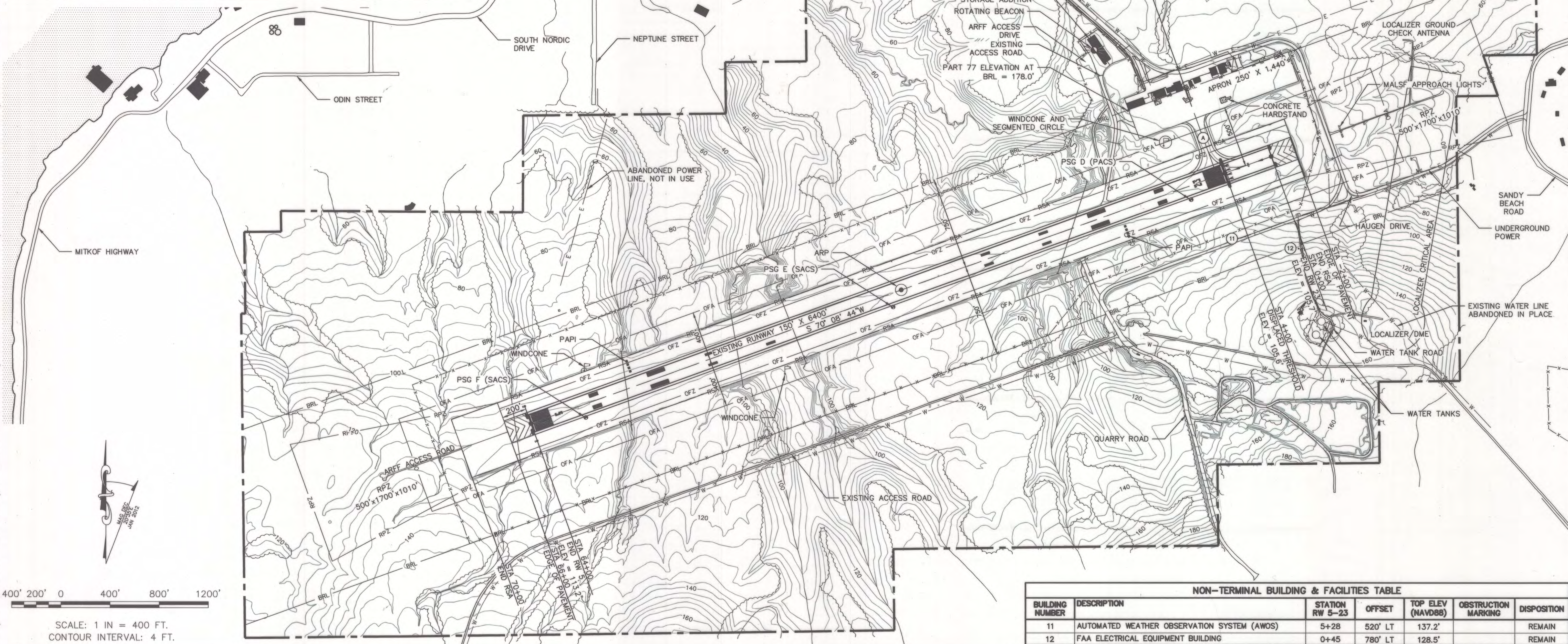
9

- GENERAL NOTES:
1. NO THRESHOLD SITING SURFACE PENETRATIONS.
 2. NO OFZ OBJECT PENETRATIONS.



TAXIWAY DATA TABLE

TAXIWAY DESIGNATION	LENGTH (FEET)	WIDTH (FEET)	SAFETY AREA WIDTH (FEET)	OBJECT FREE AREA WIDTH (FEET)
TAXIWAY A	425	94	118	186



NON-TERMINAL BUILDING & FACILITIES TABLE

BUILDING NUMBER	DESCRIPTION	STATION RW 5-23	OFFSET	TOP ELEV (NAVD86)	OBSTRUCTION MARKING	DISPOSITION
11	AUTOMATED WEATHER OBSERVATION SYSTEM (AWOS)	5+28	520' LT	137.2'		REMAIN
12	FAA ELECTRICAL EQUIPMENT BUILDING	0+45	780' LT	128.5'		REMAIN

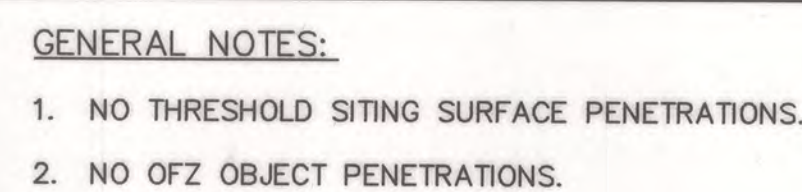
PLANNED: NBS
DRAWN: SA/MM
CHECKED: EJG

STATE OF ALASKA
DEPARTMENT OF TRANSPORTATION
AND PUBLIC FACILITIES
SOUTHEAST REGION PLANNING

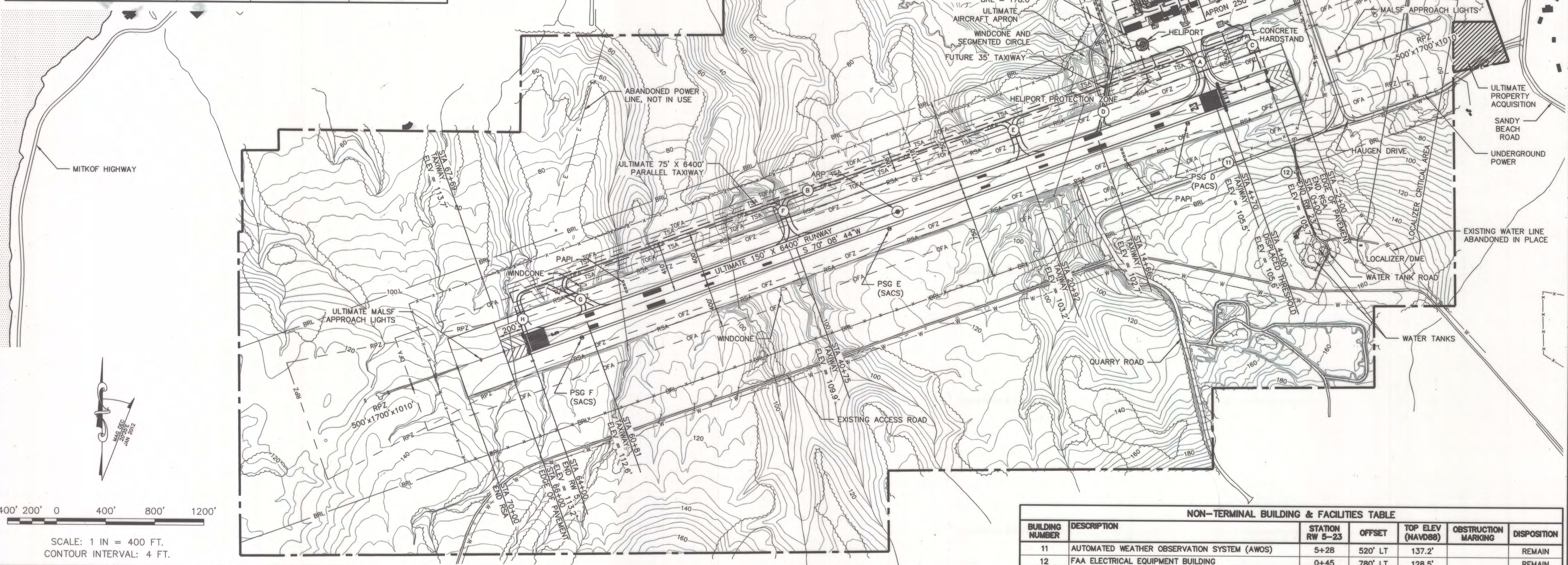
PREVIOUS REVISION DATE: MARCH 22, 2005
APPROVED: *[Signature]* DATE: 9/11/13
VERNE SKAGERBERG, TRANSPORTATION PLANNER, FOR
ANDY HUGHES, CHIEF OF PLANNING

FAA AIRSPACE REVIEW NO: 2012-AAL-218-NRA
FAA APPROVAL DATE: 10/9/2013
BY: *[Signature]*
FAA AIRPORT DIVISION, ALASKA REGION, AAL-600
SUBJECT TO CONDITIONS IN LETTER DATED: 10/9/2013
PREVIOUS ALP FAA APPROVAL DATE: AUGUST 24, 2006

PETERSBURG JAMES A. JOHNSON AIRPORT
EXISTING AIRPORT LAYOUT DRAWING



TAXIWAY DATA TABLE				
TAXIWAY DESIGNATION	LENGTH (FEET)	WIDTH (FEET)	SAFETY AREA WIDTH (FEET)	OBJECT FREE AREA WIDTH (FEET)
TAXIWAY A	425	94	118	186
TAXIWAY B	6345	75	118	186
TAXIWAY C	440	75	118	186
TAXIWAY D	500	35	79	131
TAXIWAY E	335	75	118	186
TAXIWAY F	335	75	118	186
TAXIWAY G	475	75	118	186
TAXIWAY H	335	75	118	186



NON-TERMINAL BUILDING & FACILITIES TABLE						
BUILDING NUMBER	DESCRIPTION	STATION RW 5-23	OFFSET	TOP ELEV (NAVD88)	OBSTRUCTION MARKING	DISPOSITION
11	AUTOMATED WEATHER OBSERVATION SYSTEM (AWOS)	5+28	520' LT	137.2'		REMAIN
12	FAA ELECTRICAL EQUIPMENT BUILDING	0+45	780' LT	128.5'		REMAIN

PLANNED: NBS
DRAWN: SA/MM
CHECKED: EJG

STATE OF ALASKA
DEPARTMENT OF TRANSPORTATION
AND PUBLIC FACILITIES
SOUTHEAST REGION PLANNING

PREVIOUS REVISION DATE: MARCH 22, 2005
APPROVED: _____

DATE: 9/11/13
VERNE SKAGERBERG, TRANSPORTATION PLANNER, FOR
ANDY HUGHES, CHIEF OF PLANNING

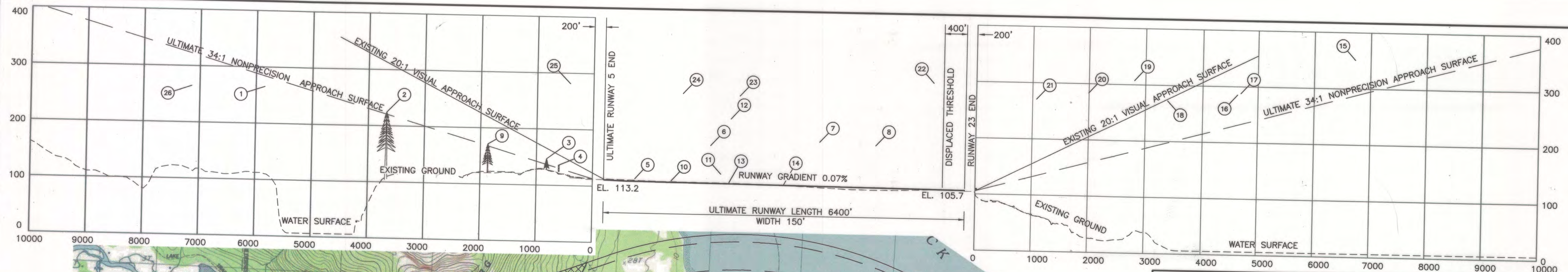
FAA AIRSPACE REVIEW NO: 2012-AAL-218-NRA
FAA APPROVAL DATE: 10/9/2013
BY: [Signature]
FAA AIRPORT DIVISION, ALASKA REGION, AAL-600
SUBJECT TO CONDITIONS IN LETTER DATED: 10/9/2013
PREVIOUS ALP FAA APPROVAL DATE: AUGUST 24, 2006

PETERSBURG JAMES A. JOHNSON AIRPORT

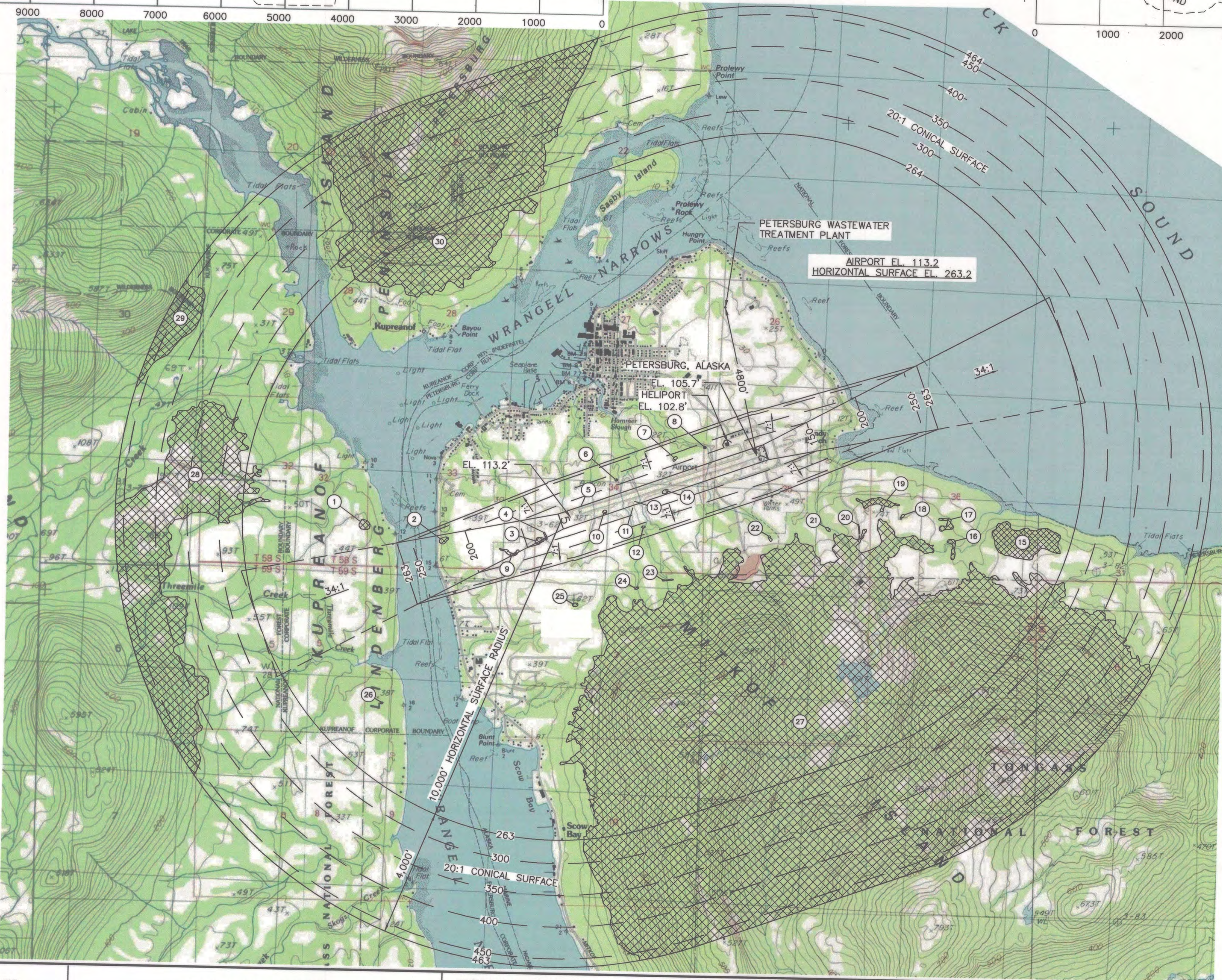
ULTIMATE AIRPORT LAYOUT DRAWING

SHEET
3 OF 9

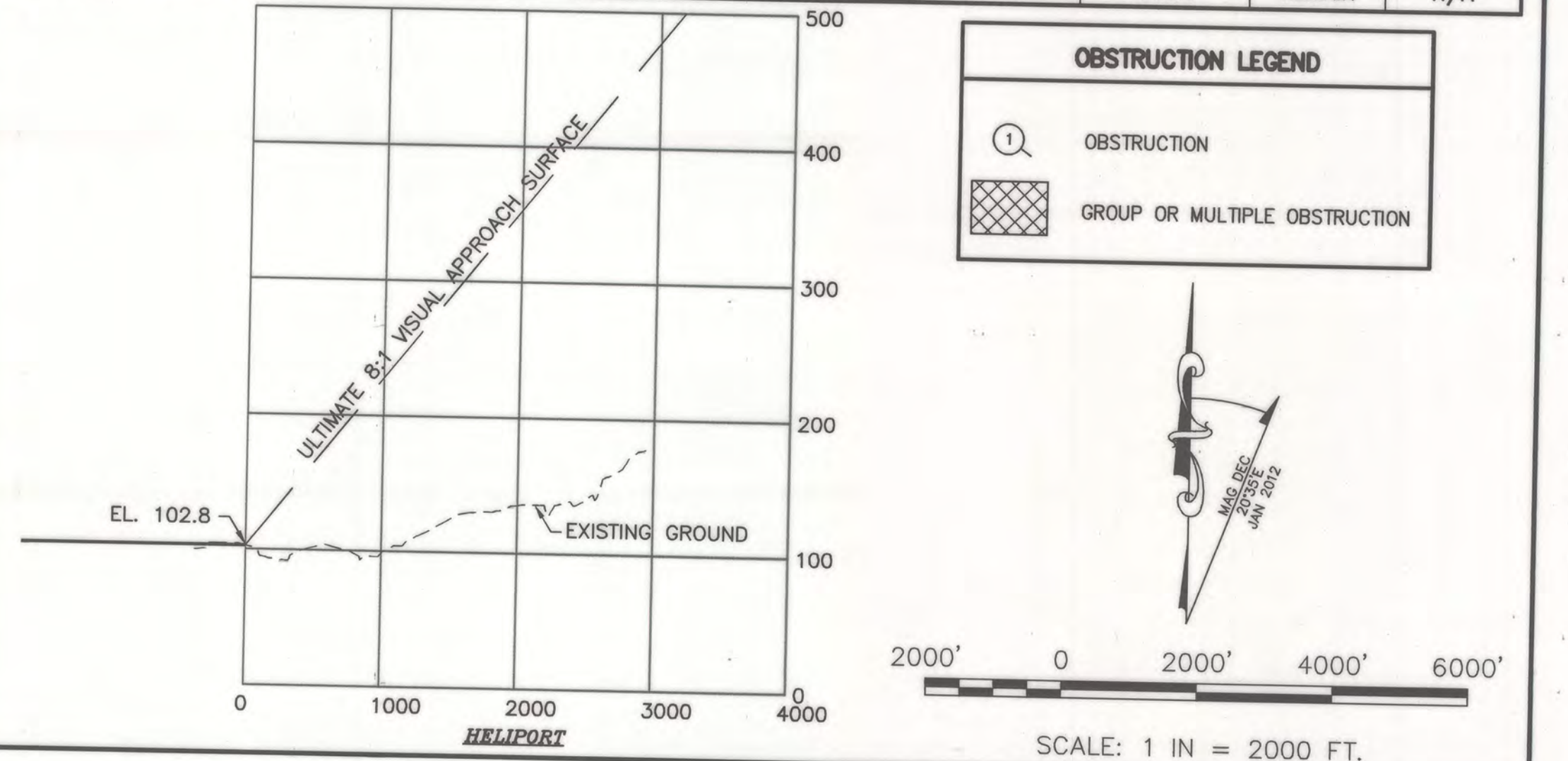
Z:\project\1627.01 DOT_SE Aeronautical 2009 Petersburg Airport\Civil\ACAD\1627.01-Part 77.dwg



GENERAL NOTES:
1. REFER TO THE INNER PORTION OF THE APPROACH SURFACE DRAWINGS FOR CLOSE IN OBSTRUCTIONS.



OBSTRUCTION TABLE								
ITEM NO.	DESCRIPTION	STATION/OFFSET RW 5-23	ELEVATION (NAVD88)	SURFACE PENETRATED	SURFACE ELEVATION	AMOUNT PENETRATED	DISPOSITION	STAGE TO CORRECT
1	TREE	124+45/1886' RT	265.6'	HORIZONTAL	263.2'	2.4'	REMOVE	N/A
2	TREES	102+73/626' RT	224.7'	APPROACH	222.0'	2.7'	REMOVE	N/A
3	TREES	74+17/351' RT	147.2'	APPROACH	142.9'	4.3'	REMOVE	N/A
4	FENCE	71+98/284' LT	136.6'	APPROACH	130.9'	5.7'	RELOCATE	N/A
5	WINDSOCK	58+46/255' RT	115.1'	TRANSITIONAL	113.3'	1.8'	REMAIN	N/A
6	TREE	45+07/668' RT	176.6'	TRANSITIONAL	170.7'	5.9'	REMOVE	N/A
7	TREES	25+71/717' RT	186.3'	TRANSITIONAL	176.9'	9.4'	REMOVE	N/A
8	TREE	15+72/746' RT	181.8'	TRANSITIONAL	178.4'	3.4'	REMOVE	N/A
9	TREES/BUSHES	84+66/419' LT	171.3'	APPROACH	166.1'	5.2'	REMOVE	N/A
10	SIGN	51+99/143' LT	112.7'	PRIMARY	111.8'	0.9'	REMAIN	N/A
11	WINDSOCK	43+21/319' LT	126.1'	TRANSITIONAL	120.6'	5.5'	REMAIN	N/A
12	TREE	41+75/1000' LT	226.7'	TRANSITIONAL	216.3'	10.4'	REMOVE	N/A
13	SIGN	41+99/144' LT	111.5'	PRIMARY	110.6'	0.9'	REMAIN	N/A
14	SIGN	32+00/143' LT	109.9'	PRIMARY	109.5'	0.4'	REMAIN	N/A
15	TREES/GROUND	-69+29/5268' LT	351.4'	HORIZONTAL	263.2'	88.2'	REMAIN	N/A
16	TREES	-48+40/4678' LT	285.5'	HORIZONTAL	263.2'	22.3'	REMAIN	N/A
17	TREES	-48+97/3960' LT	288.0'	HORIZONTAL	263.2'	24.8'	REMAIN	N/A
18	TREES	-35+97/3295' LT	272.7'	HORIZONTAL	263.2'	9.5'	REMAIN	N/A
19	TREES	-30+03/2584' LT	307.6'	HORIZONTAL	263.2'	44.4'	REMAIN	N/A
20	UTILITY POLES	-21+96/3229' LT	283.5'	HORIZONTAL	263.2'	20.3'	REMAIN	N/A
21	TREE	-12+70/2907' LT	270.7'	HORIZONTAL	263.2'	7.5'	REMAIN	N/A
22	TREES	5+57/2615' LT	295.3'	HORIZONTAL	263.2'	32.1'	REMAIN	N/A
23	TREES	40+02/2822' LT	265.5'	HORIZONTAL	263.2'	2.3'	REMAIN	N/A
24	TREES	50+09/2747' LT	268.2'	HORIZONTAL	263.2'	5.0'	REMAIN	N/A
25	TREES	70+16/2614' LT	281.7'	HORIZONTAL	263.2'	18.5'	REMAIN	N/A
26	TREE	137+45/3586' LT	264.8'	HORIZONTAL	263.2'	1.6'	REMAIN	N/A
27	TREES/GROUND	9+91/8497' LT	1121.3'	HORIZONTAL/CONICAL	362.6'	758.7'	REMAIN	N/A
28	TREES/GROUND	190+29/3102' RT	1016.1'	CONICAL	434.7'	581.4'	REMAIN	N/A
29	TREES/GROUND	162+23/9858' RT	1085.9'	CONICAL	449.0'	636.9'	REMAIN	N/A
30	TREES/GROUND	66+53/11543' RT	1716.1'	HORIZONTAL/CONICAL	410.1'	1306.0'	REMAIN	N/A



PLANNED: NBS
DRAWN: SA/MM
CHECKED: EUG

STATE OF ALASKA
DEPARTMENT OF TRANSPORTATION
AND PUBLIC FACILITIES
SOUTHEAST REGION PLANNING

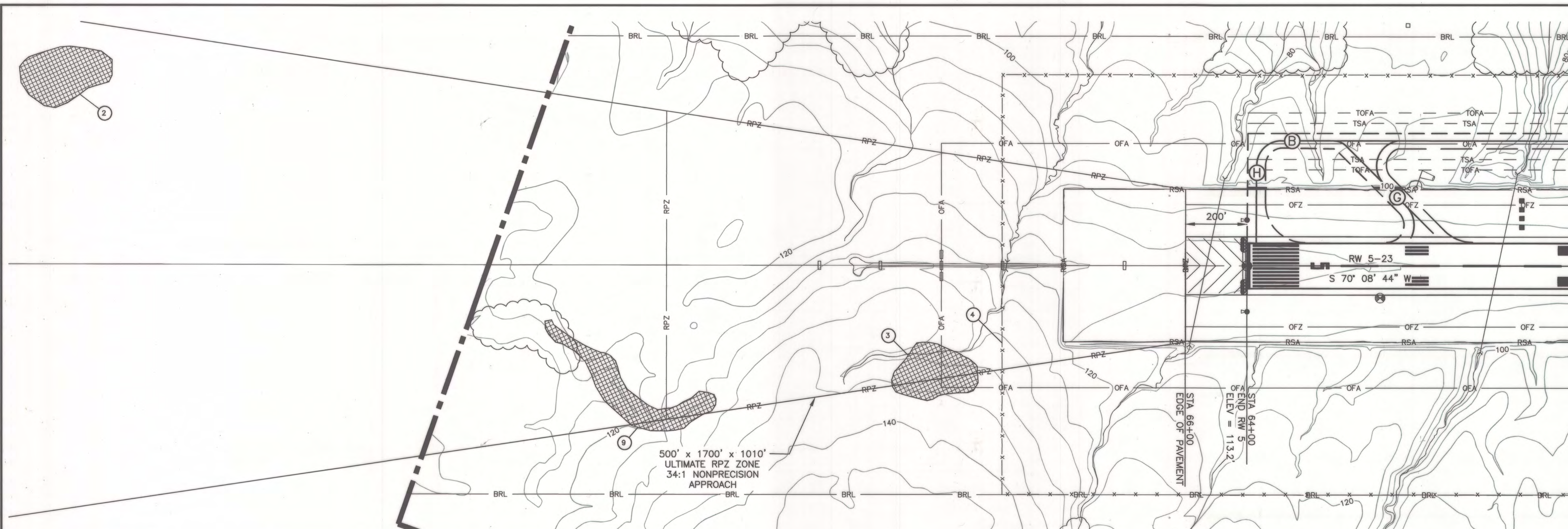
PREVIOUS REVISION DATE: MARCH 22, 2005
APPROVED:
VERNE SKAGERBERG, TRANSPORTATION PLANNER, FOR
ANDY HUGHES, CHIEF OF PLANNING
DATE: 9/11/13

FAA AIRSPACE REVIEW NO: 2012-AAL-218-NRA
FAA APPROVAL DATE: 10/9/2013
BY:
FAA AIRPORT DIVISION, ALASKA REGION, AAL-600
SUBJECT TO CONDITIONS IN LETTER DATED: 10/9/2013
PREVIOUS ALP FAA APPROVAL DATE: AUGUST 24, 2006

PETERSBURG JAMES A. JOHNSON AIRPORT
AIRPORT AIRSPACE
(PART 77) DRAWING

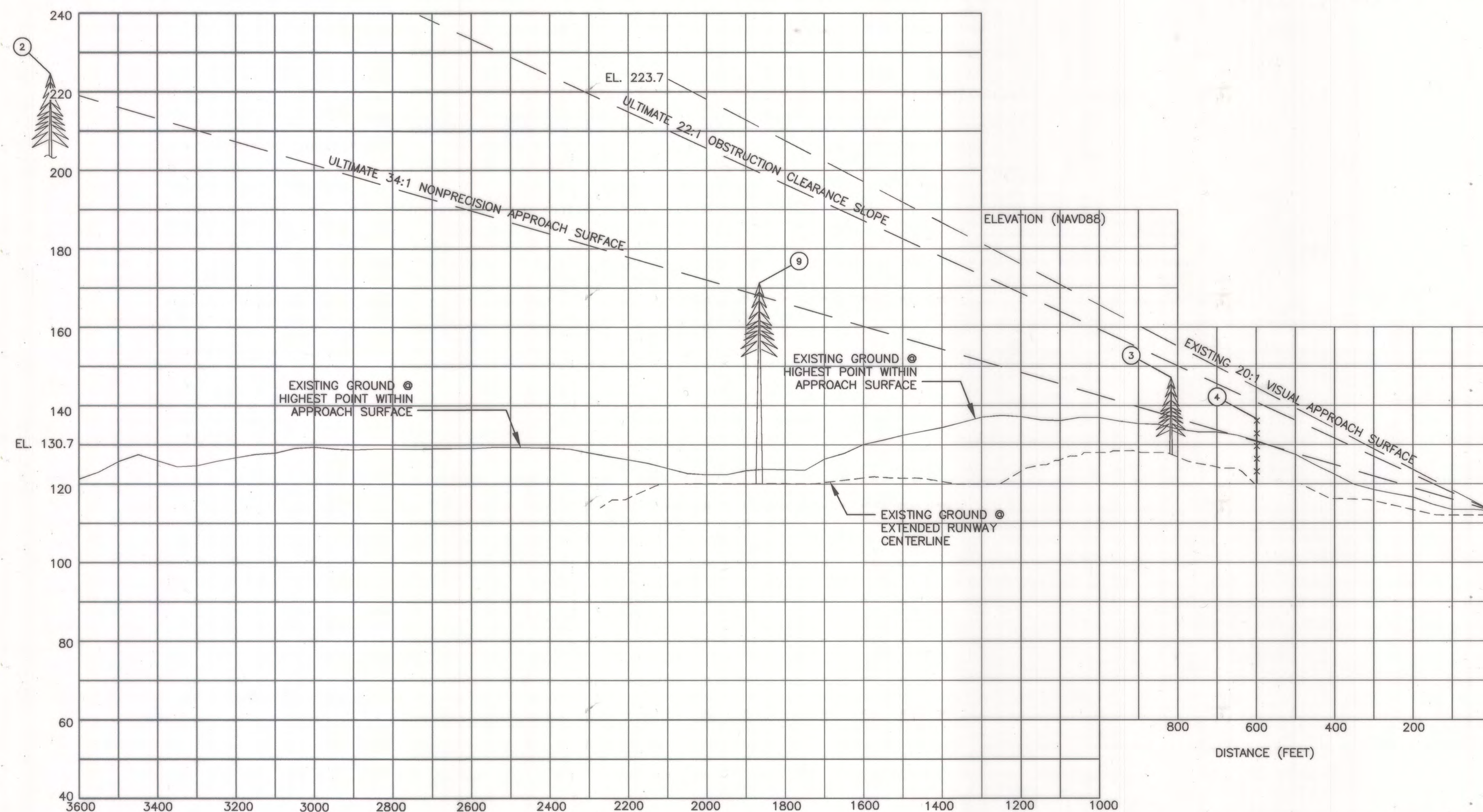
SHEET
4 OF
9

Z:\project\1627.01 DOT_SE Aeronautical 2009 Petersburg Airport\Civil\ACAD\1627.01-Inner Approach.dwg

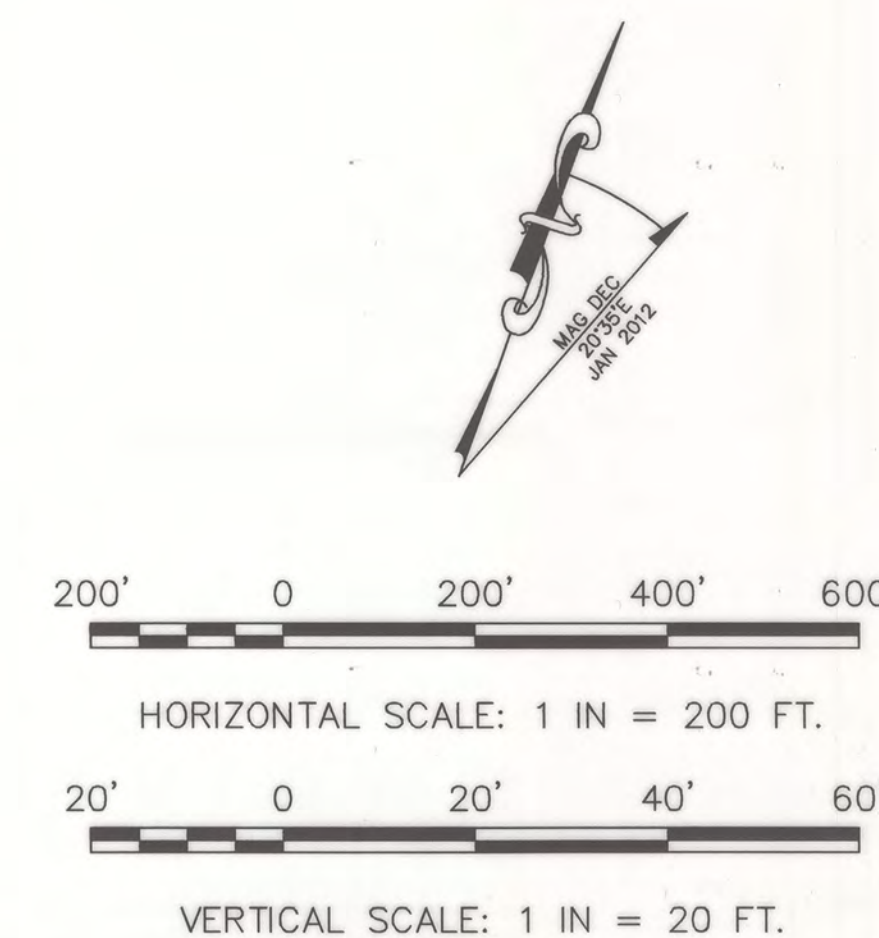


- GENERAL NOTES:
1. THERE ARE CONTROLLING OBSTRUCTIONS FOR RUNWAY 5. THEREFORE THE CONTROLLING OBSTRUCTION CLEARANCE SLOPE IS ESTABLISHED AS 22:1 PER FAA AC 150/5200-35, SECTION 4, DATA ELEMENT NUMBER 57.
 2. THERE ARE OBJECT PENETRATIONS IN THE RUNWAY APPROACH END SITING SURFACES OF RUNWAY 5, AS DEFINED IN FAA AC 150/5300-13, CHG 15, APPENDIX 2, TABLE A2-1, LINE 3.

RPZ TABLE	
R/W 5 RPZ DIMENSIONS (INNER WIDTH X LENGTH X OUTER WIDTH)	500' X 1700' X 1010'



OBSTRUCTION TABLE								
ITEM NO.	DESCRIPTION	STATION/OFFSET RW 5-23	ELEVATION (NAVD88)	SURFACE PENETRATED	SURFACE ELEVATION	AMOUNT PENETRATED	DISPOSITION	STAGE TO CORRECT
2	TREES	102+73/626' RT	224.7'	APPROACH	222.0'	2.7'	REMOVE	N/A
3	TREES	74+17/351' RT	147.2'	APPROACH	142.9'	4.3'	REMOVE	N/A
4	FENCE	71+98/284' LT	136.6'	APPROACH	130.9'	5.7'	RELOCATE	N/A
9	TREES/BUSHES	84+66/419' LT	171.3'	APPROACH	166.1'	5.2'	REMOVE	N/A



PLANNED: NBS
DRAWN: SA/MM
CHECKED: EJC

STATE OF ALASKA
DEPARTMENT OF TRANSPORTATION
AND PUBLIC FACILITIES
SOUTHEAST REGION PLANNING

PREVIOUS REVISION DATE: MARCH 22, 2005

APPROVED:

DATE: 9/11/13
VERNE SKAGERBERG, TRANSPORTATION PLANNER, FOR
ANDY HUGHES, CHIEF OF PLANNING

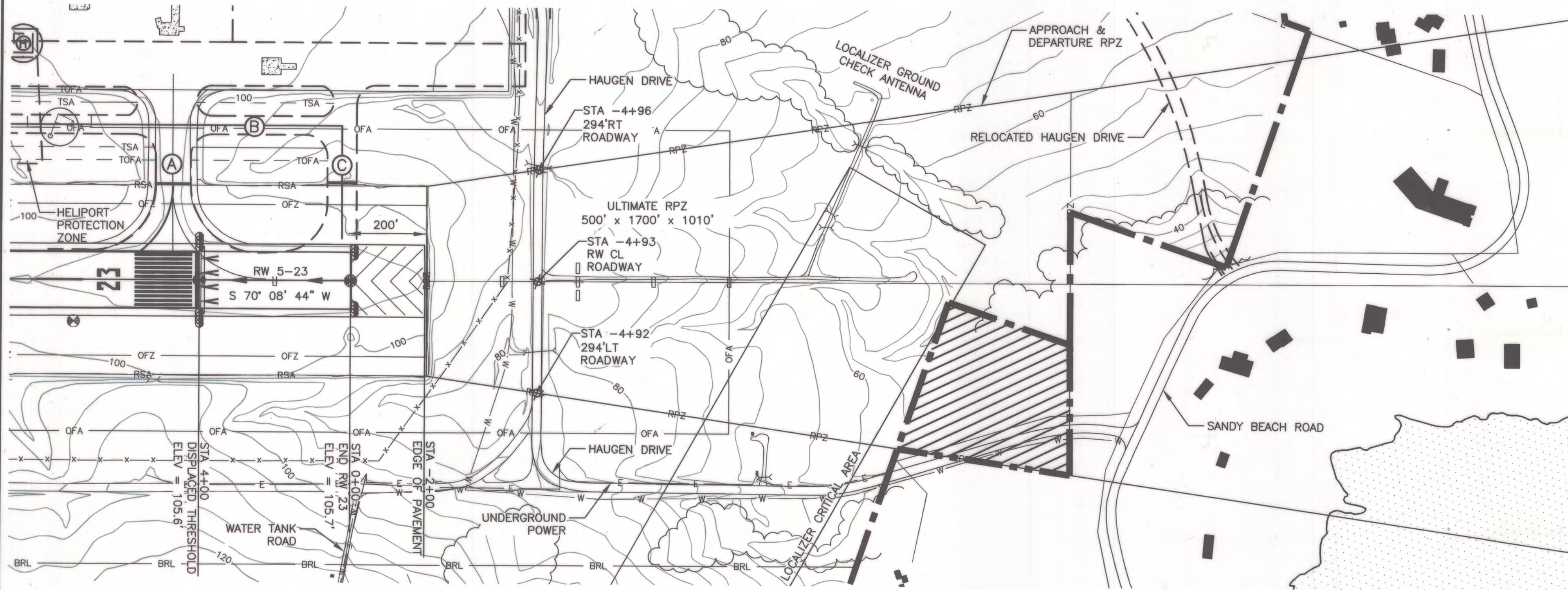
FAA AIRSPACE REVIEW NO: 2012-AAL-218-NRA

FAA APPROVAL DATE: 10/9/2013

BY: [Signature]
FAA AIRPORT DIVISION, ALASKA REGION, AAL-600
SUBJECT TO CONDITIONS IN LETTER DATED: 10/9/2013
PREVIOUS ALP FAA APPROVAL DATE: AUGUST 24, 2006

PETERSBURG JAMES A. JOHNSON AIRPORT
INNER PORTION OF THE APPROACH
SURFACE DRAWING - RUNWAY 5

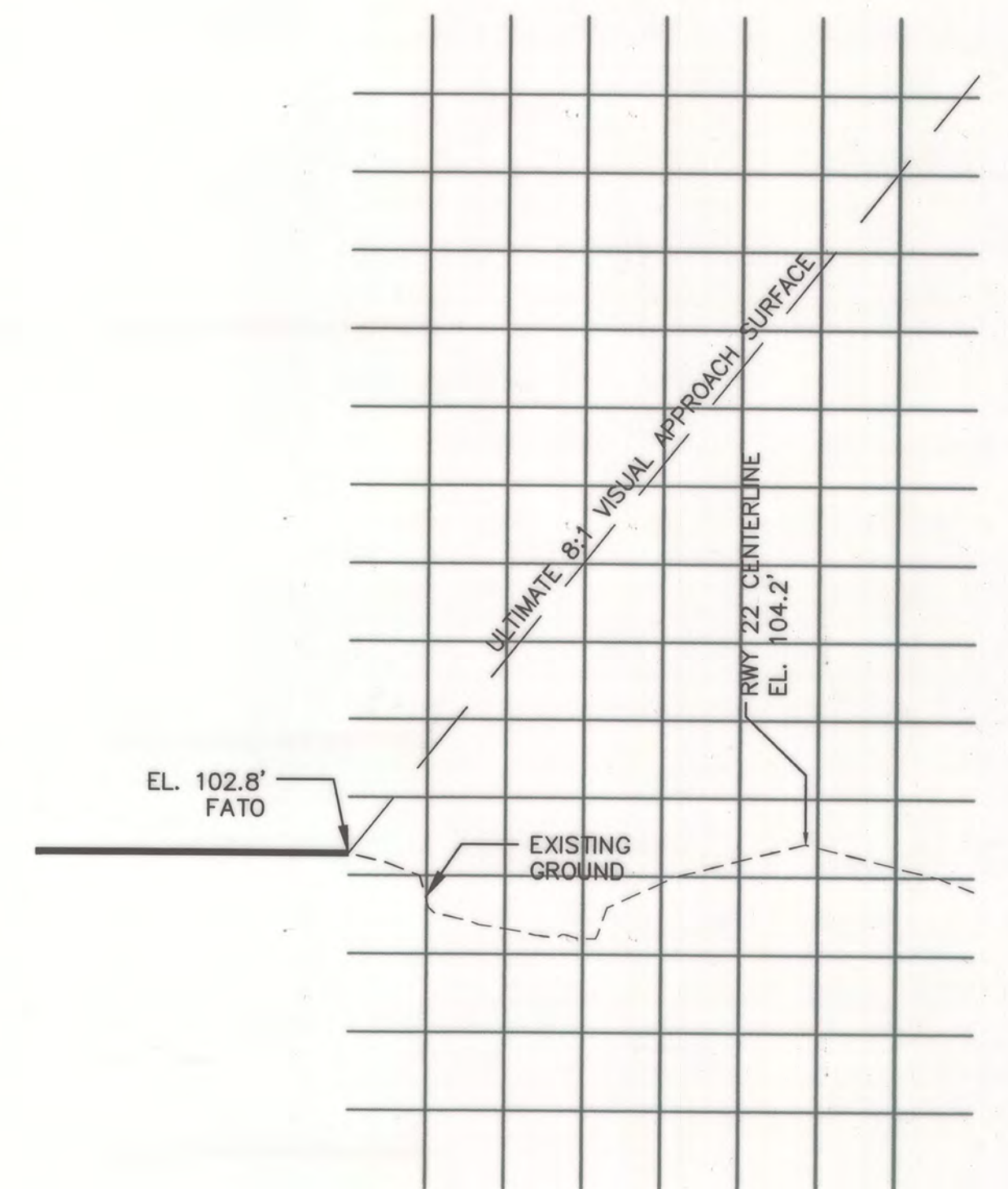
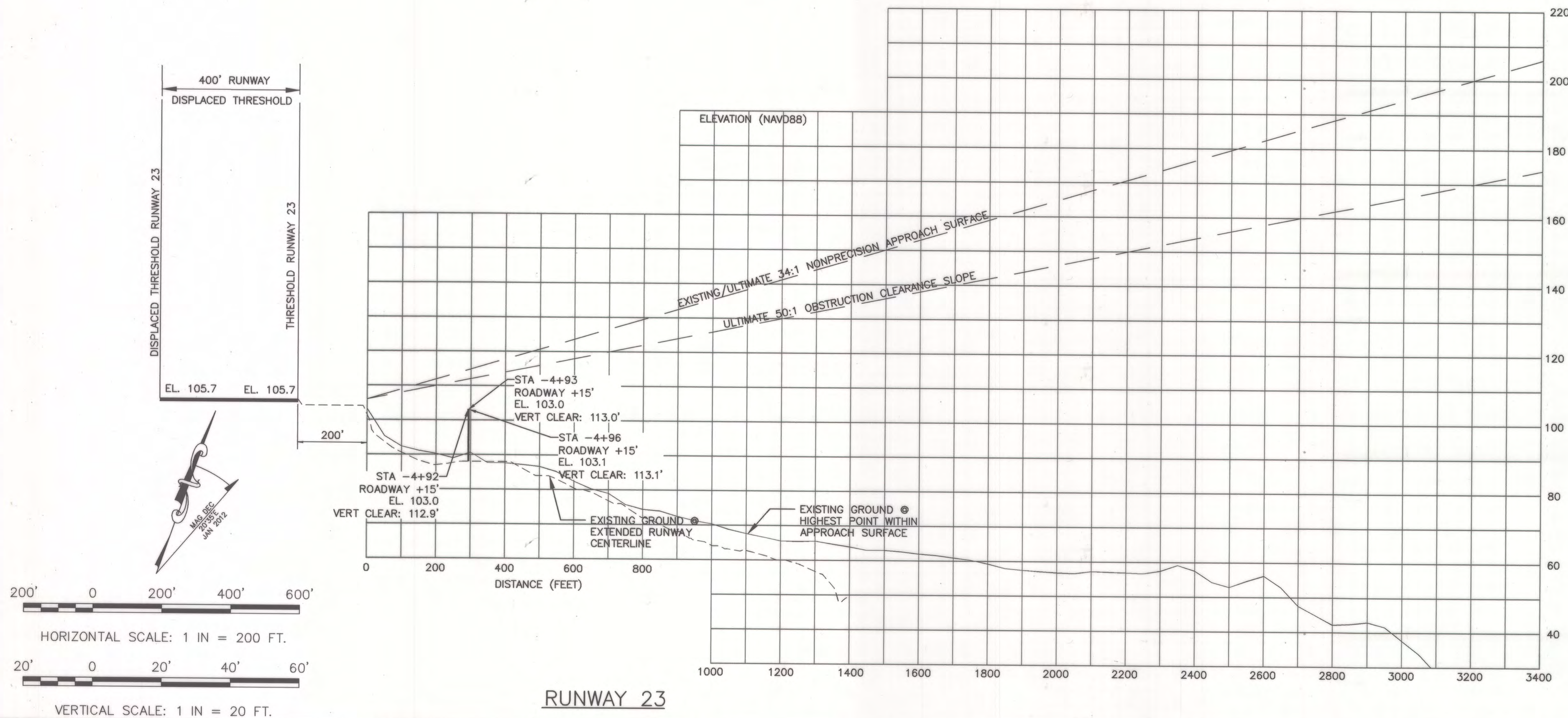
SHEET
5 OF 9



GENERAL NOTES:

1. THERE ARE NO CONTROLLING OBSTRUCTIONS FOR RUNWAY 23. THEREFORE THE CONTROLLING OBSTRUCTION CLEARANCE SLOPE IS ESTABLISHED AS 50:1 PER FAA AC 150/5200-35, SECTION 4, DATA ELEMENT NUMBER 57.
2. THERE ARE NO THRESHOLD SITING SURFACE OBJECT PENETRATIONS FOR RUNWAY 23 AS DEFINED IN FAA AC 150/5300-13, CHG 15, APPENDIX 2, TABLE A2-1 LINE 3.

RPZ TABLE	
R/W 23 APPROACH RPZ DIMENSIONS (INNER WIDTH X LENGTH X OUTER WIDTH)	500' X 1700' X 1010'
R/W 23 DEPARTURE RPZ DIMENSIONS (INNER WIDTH X LENGTH X OUTER WIDTH)	500' X 1700' X 1010'



Z:\project\1627.01 DOT_SE Aeronautical 2009 Petersburg Airport\Civil\ACAD\1627.01-Inner Approach.dwg

PLANNED: NBS
 DRAWN: SA/MM
 CHECKED: EJC

STATE OF ALASKA
 DEPARTMENT OF TRANSPORTATION
 AND PUBLIC FACILITIES
 SOUTHEAST REGION PLANNING

PREVIOUS REVISION DATE: MARCH 22, 2005

APPROVED:

DATE: 8/14/13
 VERNE SKAGERBERG, TRANSPORTATION PLANNER, FOR
 ANDY HUGHES, CHIEF OF PLANNING

FAA AIRSPACE REVIEW NO: 2012-AAL-218-NRA

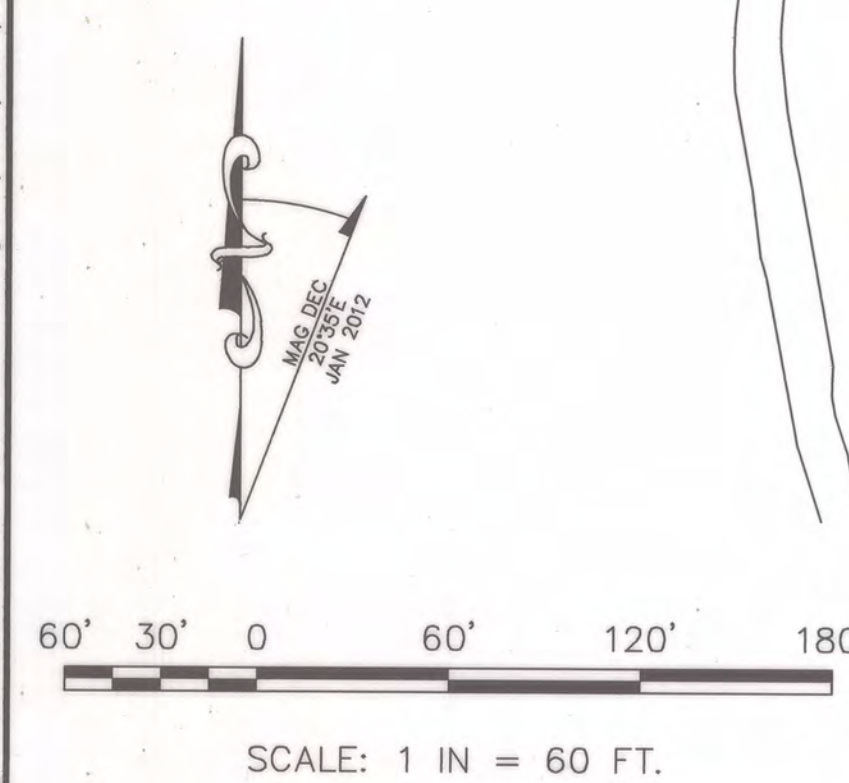
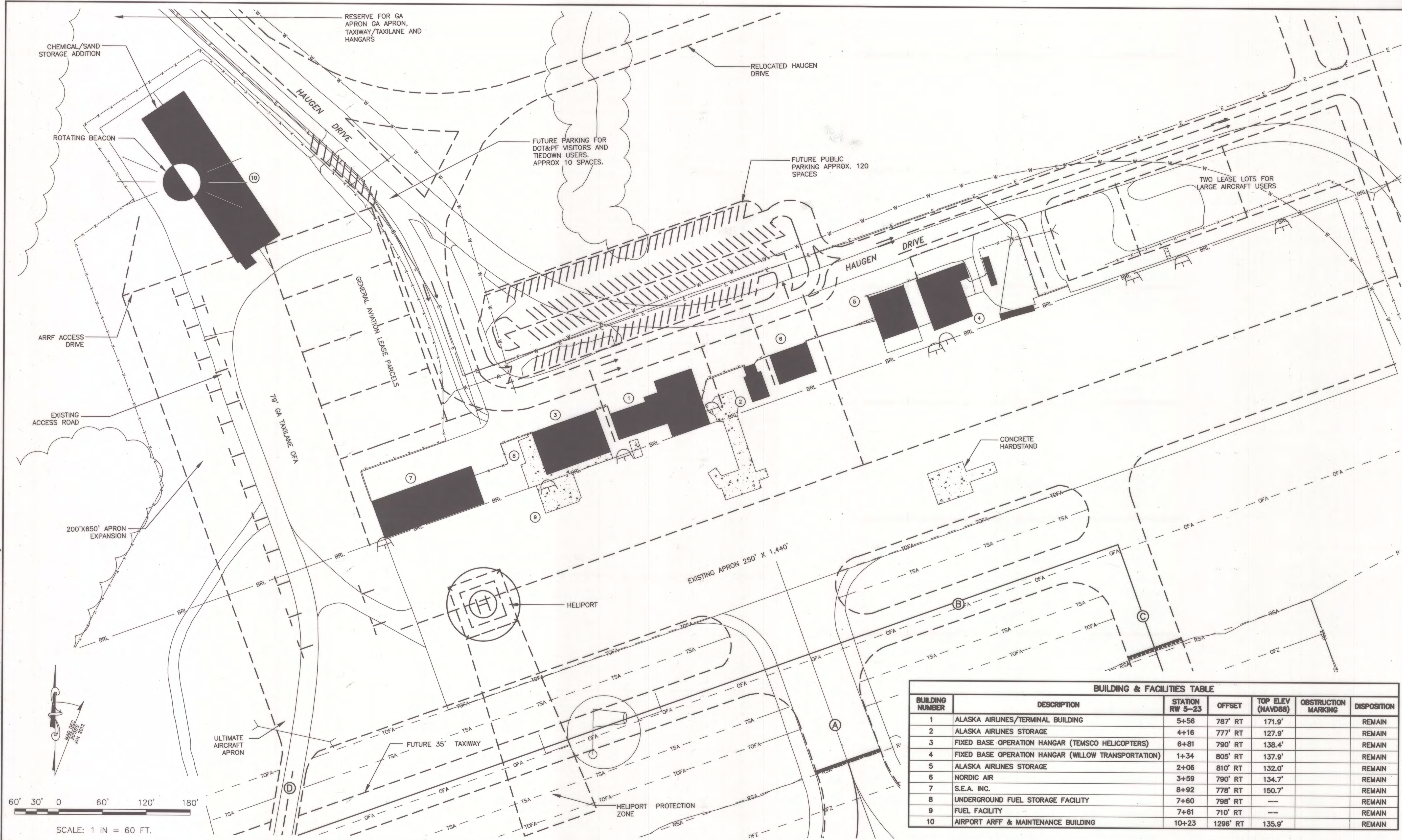
FAA APPROVAL DATE: 10/9/2013

BY: [Signature]
 FAA AIRPORT DIVISION, ALASKA REGION, AAL-600
 SUBJECT TO CONDITIONS IN LETTER DATED: 10/9/2013
 PREVIOUS ALP FAA APPROVAL DATE: AUGUST 24, 2006

PETERSBURG JAMES A. JOHNSON AIRPORT
 INNER PORTION OF THE APPROACH
 SURFACE DRAWING - RUNWAY 23

SHEET
 6 OF
 9


Z:\project\1627.01 DOT-SE Aeronautical 2009 Petersburg Airport Civil\ACAD\1627.01-Terminal Plan.dwg

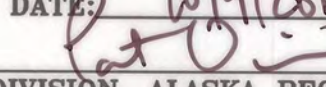


BUILDING & FACILITIES TABLE						
BUILDING NUMBER	DESCRIPTION	STATION RW 5-23	OFFSET	TOP ELEV (NAVD88)	OBSTRUCTION MARKING	DISPOSITION
1	ALASKA AIRLINES/TERMINAL BUILDING	5+56	787' RT	171.9'		REMAIN
2	ALASKA AIRLINES STORAGE	4+16	777' RT	127.9'		REMAIN
3	FIXED BASE OPERATION HANGAR (TEMSCO HELICOPTERS)	6+81	790' RT	138.4'		REMAIN
4	FIXED BASE OPERATION HANGAR (WILLOW TRANSPORTATION)	1+34	805' RT	137.9'		REMAIN
5	ALASKA AIRLINES STORAGE	2+06	810' RT	132.0'		REMAIN
6	NORDIC AIR	3+59	790' RT	134.7'		REMAIN
7	S.E.A. INC.	8+92	778' RT	150.7'		REMAIN
8	UNDERGROUND FUEL STORAGE FACILITY	7+60	798' RT	---		REMAIN
9	FUEL FACILITY	7+61	710' RT	---		REMAIN
10	AIRPORT ARFF & MAINTENANCE BUILDING	10+23	1296' RT	135.9'		REMAIN

PLANNED: NBS
DRAWN: SA/MM
CHECKED: EJG

STATE OF ALASKA
DEPARTMENT OF TRANSPORTATION
AND PUBLIC FACILITIES
SOUTHEAST REGION PLANNING

PREVIOUS REVISION DATE: MARCH 22, 2005
APPROVED:  DATE: 9/11/13
VERNE SKAGERBERG, TRANSPORTATION PLANNER, FOR
ANDY HUGHES, CHIEF OF PLANNING

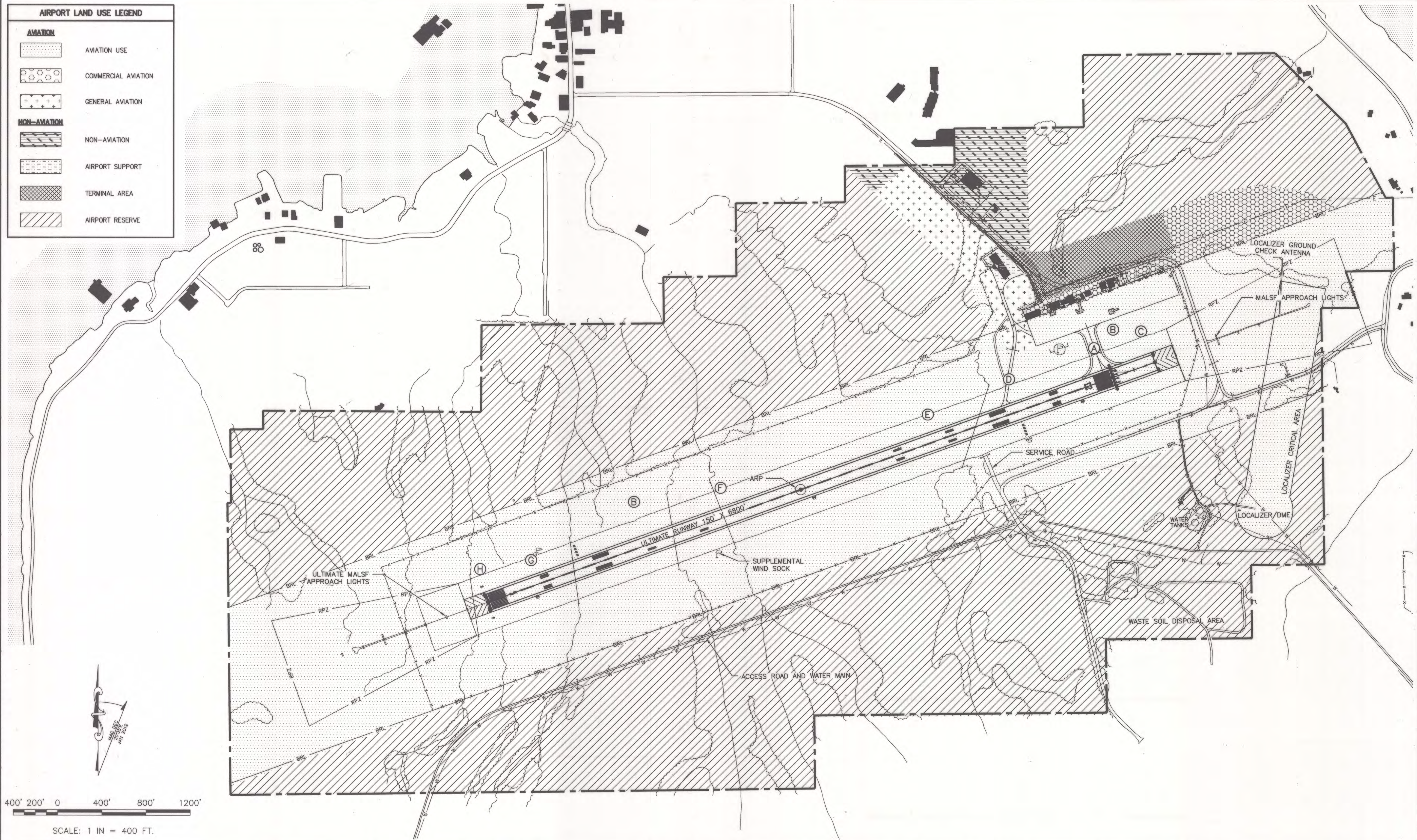
FAA AIRSPACE REVIEW NO: 2012-AAL-218-NRA
FAA APPROVAL DATE: 10/17/2013
BY: 
FAA AIRPORT DIVISION, ALASKA REGION, AAL-600
SUBJECT TO CONDITIONS IN LETTER DATED: 10/9/2013
PREVIOUS ALP FAA APPROVAL DATE: AUGUST 24, 2006

PETERSBURG JAMES A. JOHNSON AIRPORT
TERMINAL AREA PLAN

SHEET
7 OF 9

Z:\project\1627.01 DOT_SE Aeronautical 2009 Petersburg Airport\Civil\ACAD\1627.01-Landuse.dwg

AIRPORT LAND USE LEGEND	
AVIATION	
	AVIATION USE
	COMMERCIAL AVIATION
	GENERAL AVIATION
NON-AVIATION	
	NON-AVIATION
	AIRPORT SUPPORT
	TERMINAL AREA
	AIRPORT RESERVE



PLANNED: NBS
DRAWN: SA/MM
CHECKED: EUG

STATE OF ALASKA
DEPARTMENT OF TRANSPORTATION
AND PUBLIC FACILITIES
SOUTHEAST REGION PLANNING

PREVIOUS REVISION DATE: MARCH 22, 2005
APPROVED:
DATE: 9/11/13
VERNE SKAGERBERG, TRANSPORTATION PLANNER, FOR
ANDY HUGHES, CHIEF OF PLANNING

FAA AIRSPACE REVIEW NO: 2012-AAL-218-NRA
FAA APPROVAL DATE: 10/9/2013
BY:
FAA AIRPORT DIVISION, ALASKA REGION, AAL-600
SUBJECT TO CONDITIONS IN LETTER DATED: 10/9/2013
PREVIOUS ALP FAA APPROVAL DATE: AUGUST 24, 2006

PETERSBURG JAMES A. JOHNSON AIRPORT
LAND USE DRAWING

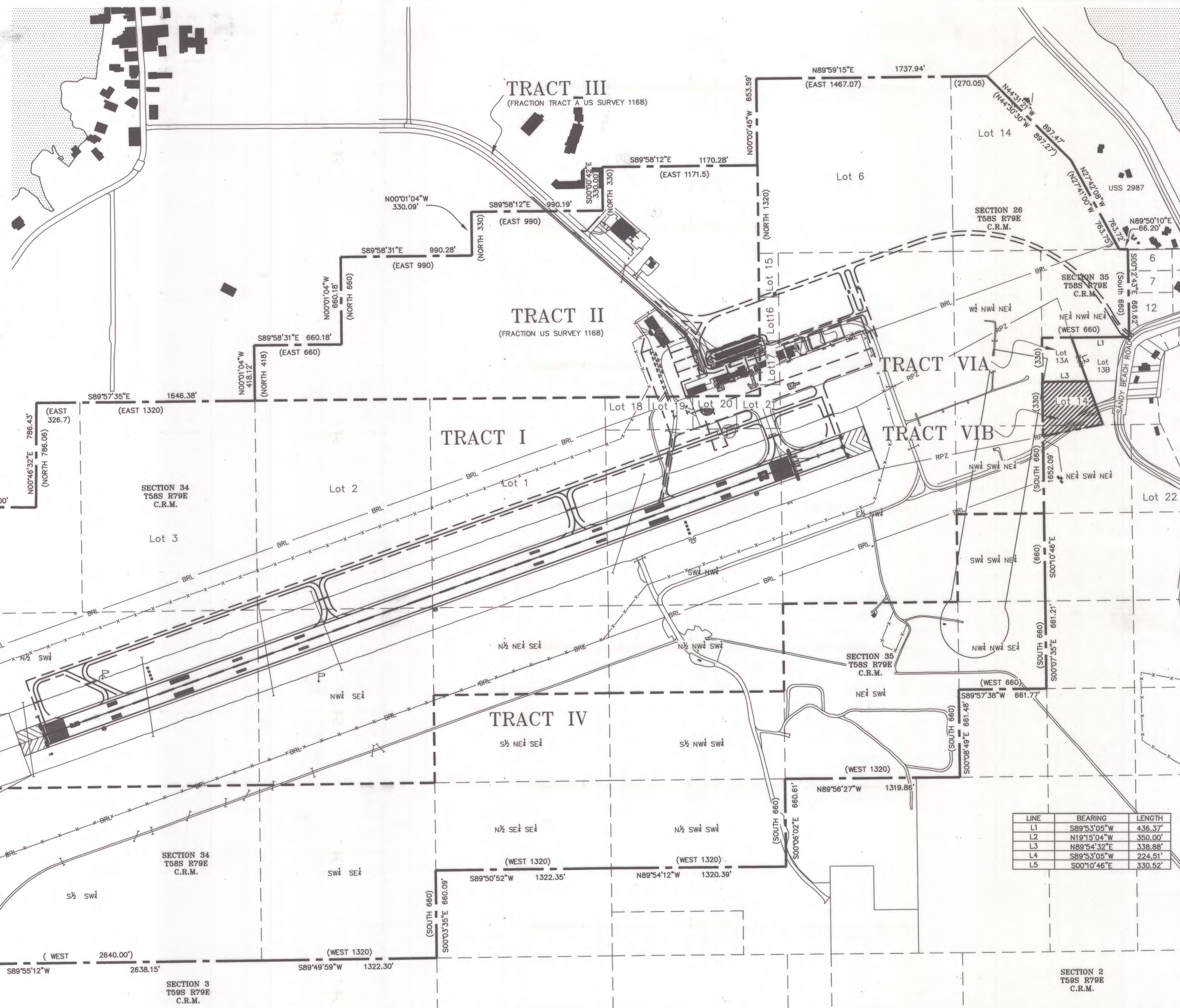
SHEET
8 OF 9

AIRPORT PROPERTY LEGEND

PARCEL	AREA	GRANTOR	GRANTEE	INTEREST/ COMMENTS	RECORDING DATA
TRACT I	574.11 ACRES	ALASKA DIVISION OF LANDS	STATE OF ALASKA	ILMT GRANTED 8/7/1967 ADL 34074, ADA 10523	
TRACT II	109.58 ACRES	CITY OF PETERSBURG	STATE OF ALASKA	QUIT CLAIM DEED 05/12/1967, ADA 10524 10/2/1967, ADA 10524	DEED BOOK 11 PAGE 37-39 PAGE 180-182
TRACT III	1.77 ACRES	CITY OF PETERSBURG	STATE OF ALASKA	QUIT CLAIM DEED 10/2/1967, ADA 10563 ORIG 50' RIGHT OF WAY	DEED BOOK 11 PAGE 176-179
TRACT III PARCEL 5D	2.36 ACRES	CITY OF PETERSBURG	STATE OF ALASKA	R/W EASEMENT 07/05/1973 WIDEN R/W TO 100'	BOOK 1 PAGE 78-80
NOTE: RESOLUTION NO. 380-R, DATED 7/2/1973, BY CITY OF PETERSBURG, DECLARING ALL STREETS WITHIN CITY BOUNDARY THAT FORM ALIGNMENT FOR PROJECT NO. S-0937(12) BE A PART OF ALASKA ROUTE S-937. ADDITIONAL ACQUISITION ALASKA HIGHWAY PROJECT S-0937(12) SEE PERMANENT DOCUMENTS FILE PETERSBURG AIRPORT ACCESS					
TRACT IV	338.81 ACRES	ALASKA DIVISION OF LANDS	STATE OF ALASKA	ADL 34074, 1/15/1968 ADA 10564, (II)	BOOK 11 PAGE 101-102
TRACT IV	338.81 ACRES	ALASKA DIVISION OF LANDS	STATE OF ALASKA	AMENDED ILMT, GRANTED BY ADL 34074, 6/21/1972 ADA 10564, (II)	BOOK 11 PAGE 103
TRACT V	24.74 ACRES	RPM HOLDINGS	STATE OF ALASKA	LOT 3, USS 284 PLAT 2009-6 P.R.D.	2009-000403-0
TRACT VIA	2.13 ACRES	CITY OF PETERSBURG	STATE OF ALASKA	LOT 13A, SEC. 35 PLAT 2008-15, P.R.D. WARRANTY DEED FEE SIMPLE	2008-000884-0
TRACT VIB	3.39 ACRES	CITY OF PETERSBURG	STATE OF ALASKA	TO BE ACQUIRED	

LEGEND

	EXISTING AIRPORT BOUNDARY
	ULTIMATE AIRPORT BOUNDARY
	BRL
	BUILDING RESTRICTION LINE
	LAND TO BE ACQUIRED



LINE	BEARING	LENGTH
L1	S89°53'05"W	436.37'
L2	N19°15'04"W	350.00'
L3	N89°54'32"E	338.88'
L4	S89°53'05"W	224.51'
L5	S00°10'46"E	330.52'

PLANNED: NBS
DRAWN: SA/MM
CHECKED: E/JG

STATE OF ALASKA
DEPARTMENT OF TRANSPORTATION
AND PUBLIC FACILITIES
SOUTHEAST REGION PLANNING

PREVIOUS REVISION DATE: MARCH 22, 2005

APPROVED:

VERNE SKAGERBERG, TRANSPORTATION PLANNER, FOR
ANDY HUGHES, CHIEF OF PLANNING
DATE: 9/11/13

FAA AIRSPACE REVIEW NO: 2012-AAL-218-NRA

FAA APPROVAL DATE: 10/9/2013

BY:
FAA AIRPORT DIVISION, ALASKA REGION, AAL-600

SUBJECT TO CONDITIONS IN LETTER DATED: 10/9/2013

PREVIOUS ALP FAA APPROVAL DATE: AUGUST 24, 2006

PETERSBURG JAMES A. JOHNSON AIRPORT
AIRPORT PROPERTY MAP

SHEET

9
OF
9