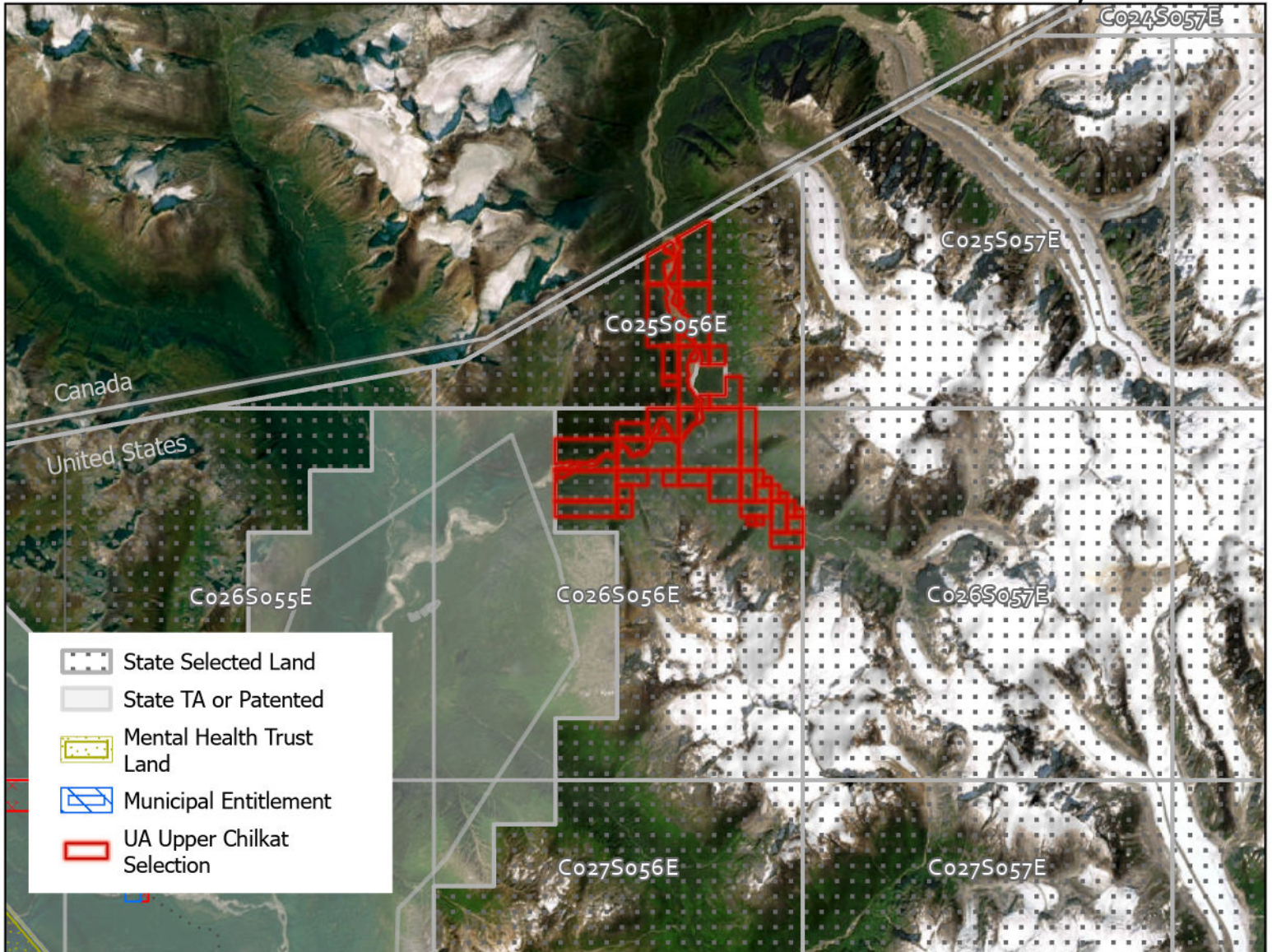


Attachment A: Vicinity Map

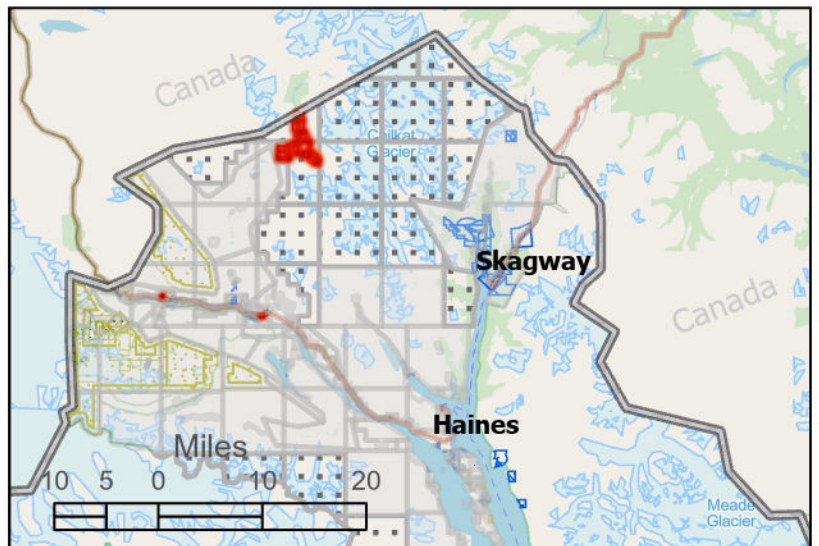
University of Alaska

Upper Chilkat Selection

General State Selection File GS-5434, GS-5439

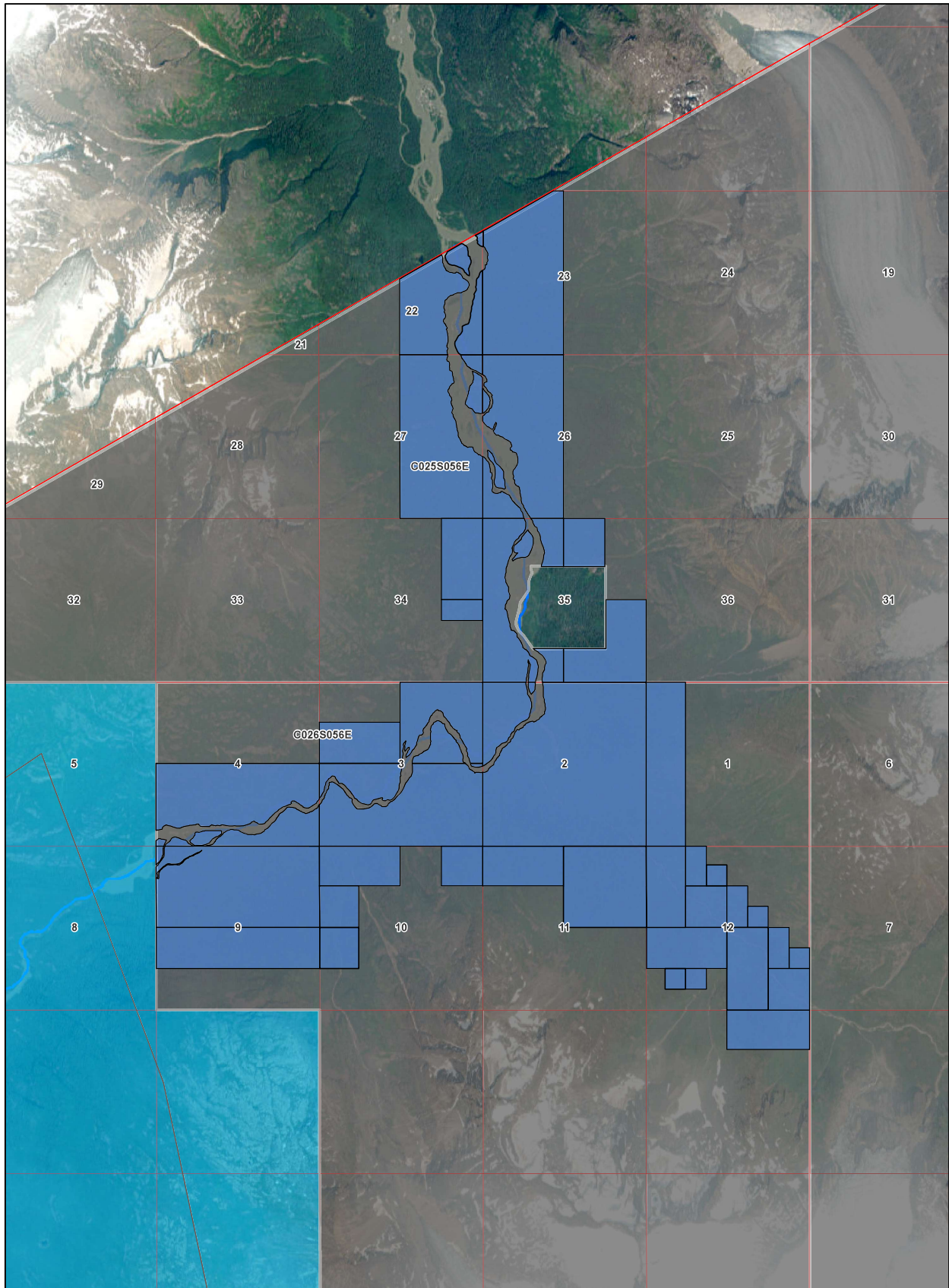


Copper River Meridian T. 25 & 26 S., R. 56 E.



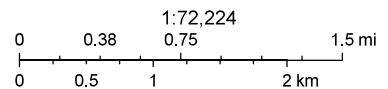
For more information contact:
 James Ellis
 Department of Natural Resources
 Division of Mining, Land and Water
 Realty Services Section
 Phone: 907-269-8607
 Email: james.ellis@alaska.gov

Upper Chilkat UA Land Selection



4/3/2024, 1:50:53 PM

- UA Lands Batch 3
- State Selected Land - All
- State TA / PA
- Townships
- Sections
- Navigable Streams (Title Purposes)
- Navigable Streams in Federal Areas
- Navigable



Maxar Products. Dynamic Mosaic © 2020 Maxar Technologies Inc.,
 Alaska Geospatial Office, USGS
 Alaska Department of Natural Resources