

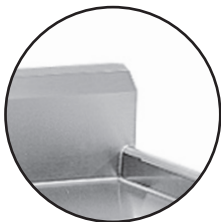
# STAINLESS STEEL DISHTABLES ISLAND SOIL

**NEW** Tile Edge Design



**SPEC-LINE**  
DTS-G30-60R Shown

**10-1/2" EXTRA LARGE  
Bold Looking Backsplash  
with 2" return and tile edge**



| ACCESSORIES | Model # | Qty |
|-------------|---------|-----|
| Faucet      |         |     |
| Wall Shelf  |         |     |
| Undershelf  |         |     |
|             |         |     |

Item #: \_\_\_\_\_ Qty #: \_\_\_\_\_

Model #: \_\_\_\_\_

Project #: \_\_\_\_\_

**Spec-Line:** 14 ga. 304 Series Stainless Steel Top.  
16 ga. 304 Stainless Steel Legs Stainless Steel Legs  
with Welded Cross Bracing & Stainless Steel Bullet Feet.

**UPGRADED!**  
**Standard:** 16 ga. 304 Series Stainless Steel Top.  
16 ga. 304 Stainless Steel Legs Stainless Steel Legs  
with Welded Cross Bracing & Stainless Steel Bullet Feet.

**Super Saver:** 16 ga. 304 Series Stainless Steel Top.  
Galvanized Legs with Plastic Bullet Feet.

## FEATURES:

Tile edge for ease of installation.

STANDARD & SUPERSAVER SOIL section features 5" deep sink bowl.

SPEC-LINE SOIL section features 8" deep sink bowl.

Dishtable system consists of SOIL and CLEAN sections.

Table is furnished with 10-1/2" splash with a 2" return.

## CONSTRUCTION:

All TIG welded.

Welded areas blended to match adjacent surfaces and to a satin finish.

Stainless Steel Gussets welded to a stainless steel support channel.

## MECHANICAL:

Faucet holes in SPLASH punched on 8" centers, faucet not included.

Waste drain is 1 1/2" IPS basket type and is included.

Nominal sizing on all  
dishtables for ease of  
installation.

|                 |      | 14 Gauge 304<br>16 Ga. Stainless Steel Legs | 16 Gauge 304<br>Stainless Steel Legs | 16 Gauge 304<br>Galvanized Legs | Approx.<br>Wt. |
|-----------------|------|---------------------------------------------|--------------------------------------|---------------------------------|----------------|
| Nominal<br>Size | "L"  | SPEC-LINE                                   | STANDARD                             | SUPER SAVER                     |                |
| 4 Ft.           | 47"  | DTS-G30-48L or R                            | DTS-G70-48L or R                     | DTS-G60-48L or R                | 165 lbs.       |
| 5 Ft.           | 59"  | DTS-G30-60L or R                            | DTS-G70-60L or R                     | DTS-G60-60L or R                | 190 lbs.       |
| 6 Ft.           | 71"  | DTS-G30-72L or R                            | DTS-G70-72L or R                     | DTS-G60-72L or R                | 215 lbs.       |
| 7 Ft.           | 83"  | DTS-G30-84L or R                            | DTS-G70-84L or R                     | DTS-G60-84L or R                | 225 lbs.       |
| 8 Ft.           | 95"  | DTS-G30-96L or R                            | DTS-G70-96L or R                     | DTS-G60-96L or R                | 240 lbs.       |
| 9 Ft.           | 107" | DTS-G30-108L or R                           | DTS-G70-108L or R                    | DTS-G60-108L or R               | 335 lbs.       |
| 10 Ft.          | 119" | DTS-G30-120L or R                           | DTS-G70-120L or R                    | DTS-G60-120L or R               | 370 lbs.       |
| 12 Ft.          | 143" | DTS-G30-144L or R                           | DTS-G70-144L or R                    | DTS-G60-144L or R               | 380 lbs.       |

modify length to 138"

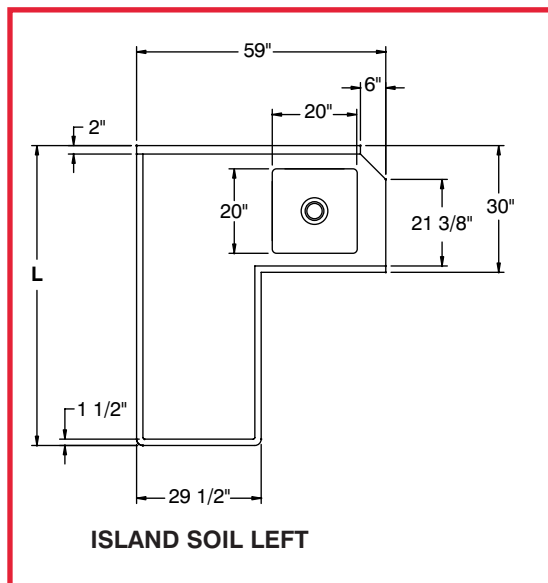
# DIMENSIONS and SPECIFICATIONS

TOL ± .500"

ALL DIMENSIONS ARE TYPICAL

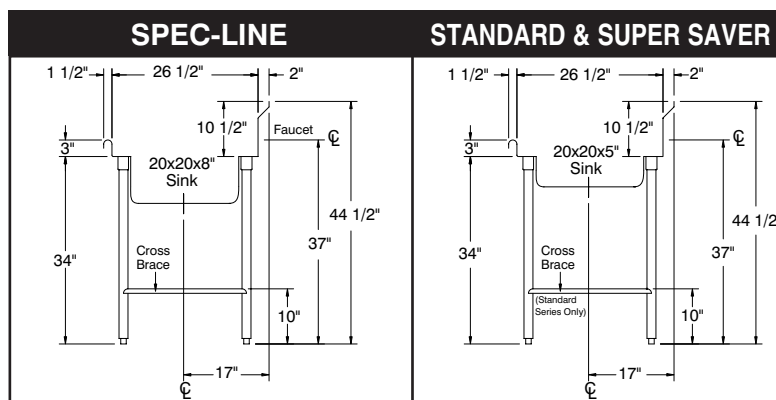
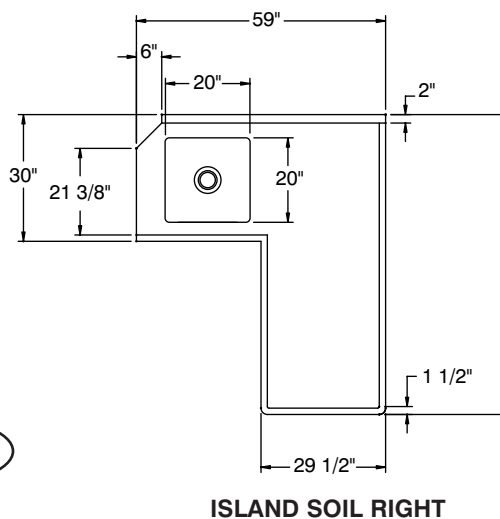
## SEE DISH MACHINE COMPATIBILITY CHART TO ENSURE PROPER FIT

Dish Machine Compatibility Chart can be found on our website at [www.advancetabco.com](http://www.advancetabco.com) under "Product Support"



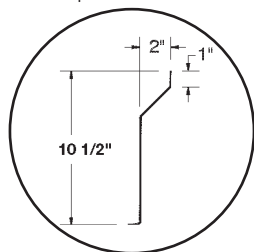
**DISH MACHINE**

**OPERATOR**



*CUSTOMIZE YOUR OWN SYSTEM  
by Ordering Optional Accessories from our  
PRODUCT & PRICE GUIDE*

Splash Detail



| Description                  | SPEC-LINE                | STANDARD                 | SUPER SAVER              |
|------------------------------|--------------------------|--------------------------|--------------------------|
| <b>Material</b>              | <b>14 Ga. 304 Series</b> | <b>16 Ga. 304 Series</b> | <b>16 Ga. 304 Series</b> |
| <b>1 5/8" Dia. Legs</b>      | Stainless Steel          | Stainless Steel          | Galvanized               |
| <b>Gussets</b>               | Stainless Steel          | Stainless Steel          | Stainless Steel          |
| <b>Bullet Feet (1" adj.)</b> | Stainless Steel          | Stainless Steel          | Plastic                  |
| <b>Cross Bracing</b>         | Welded                   | Welded                   | Optional                 |
| <b>Prerinse Bowl Depth</b>   | 8"                       | 5"                       | 5"                       |
| <b>Prerinse Basket</b>       | Included                 | Optional                 | Optional                 |



REF-P

325 Wireless Boulevard, Hauppauge, NY 11788

ADVANCE TABCO is constantly engaged in a program of improving our products. Therefore, we reserve the right to change specifications without prior notice.

© ADVANCE TABCO, SEPTEMBER 2019

## DTA-79

### TABLE MOUNTED TUBULAR, DOUBLE SIDED DESIGN



11'-6" long

Recommended for D, G and U-Shaped Series Dishtables Only.

#### FEATURES:

A dual purpose double sided open tubular design table mounted rack shelf with solid end plates

#### CONSTRUCTION:

Stainless steel posts, cross-tubes & end plates

Mounts to dishtable with stainless steel bolts. Ships Knocked Down\*

Easily assembles with simple tool

#### MATERIAL:

End Plates are 14 gauge type 304 series stainless steel

Tubing is 1 5/8" diameter 18 gauge type 300 stainless steel tubing

**CENTER SUPPORT PROVIDED FOR 9' AND LONGER SHELVES**

Center support can be positioned to accommodate rack size

\*Shelf ships separately from table to reduce freight costs and chance of shipping damage. Entire unit may ship pre-assembled from factory where special applications exist. Consult factory.

Per Linear Foot. Minimum Length 48"

Item #: \_\_\_\_\_ Qty #: \_\_\_\_\_

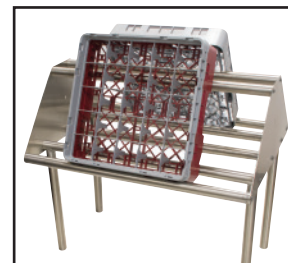
Model #: \_\_\_\_\_

Project #: \_\_\_\_\_



#### OPTION 1: Lower Angle

(Racks cannot be back to back)



#### OPTION 2: Higher Angle

For back to back storage  
(For maximum rack storage)

When using DTA-79 as a Pass-Thru for a glass rack, use **OPTION 2** (see above).  
This will allow the rack to pass through the middle (10" Clearance).



#### OPTIONAL 12" Wide Solid Overshelf Model # DTA-80

Mounts above DTA-79  
(Quantity must be equal to the length of DTA-79)  
Sold per linear foot

| MODEL # | Qty. |
|---------|------|
| DTA-79  |      |

## DTA-79S

### TABLE MOUNTED, DOUBLE SIDED DESIGN WITH SOLID BASE

#### FEATURES:

Table mounted rack shelf with solid base & end plates.

Drip tubes for water drainage

#### CONSTRUCTION:

Stainless steel posts, cross-tube (at top along length) & end plates

Mounts to dishtable with stainless steel bolts. Ships Knocked Down\*

Easily assembles with simple tool

#### MATERIAL:

End Plates and shelf base are 14 gauge type 304 series stainless steel

Tubing is 1 5/8" diameter 18 gauge type 300 stainless steel tubing

**CENTER SUPPORT PROVIDED FOR 9' AND LONGER SHELVES**

Center support bolts to shelf surface at midpoint

\*Shelf ships separately from table to reduce freight costs and chance of shipping damage. Entire unit may ship pre-assembled from factory where special applications exist. Consult factory.

Per Linear Foot. Minimum Length 48"



#### OPTIONAL 12" Wide Solid Overshelf Model # DTA-80

Mounts above DTA-79  
(Quantity must be equal to the length of DTA-79)  
Sold per linear foot

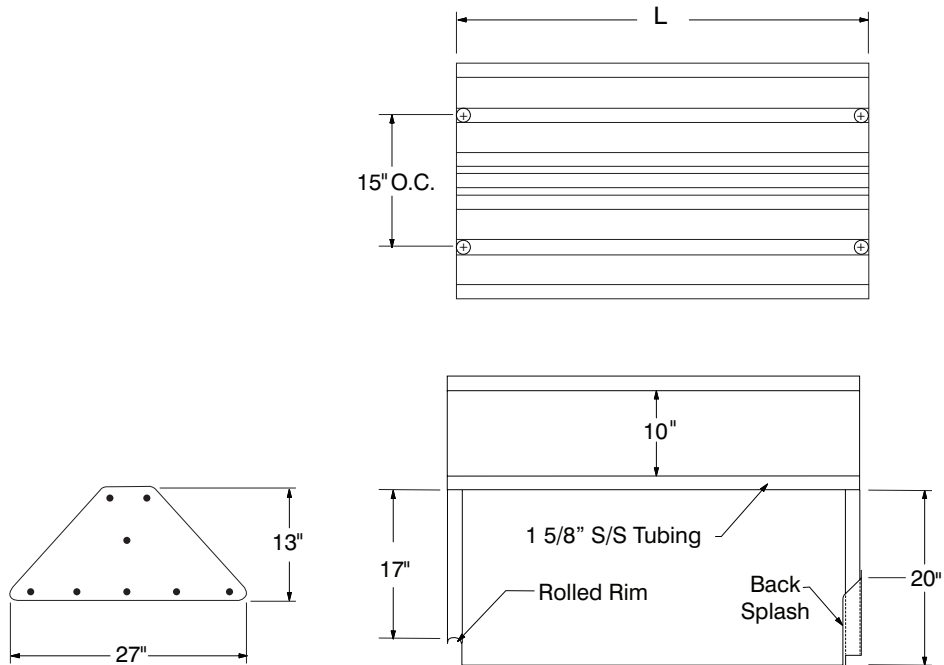
| MODEL # | Qty. |
|---------|------|
| DTA-79S |      |

# DIMENSIONS and SPECIFICATIONS

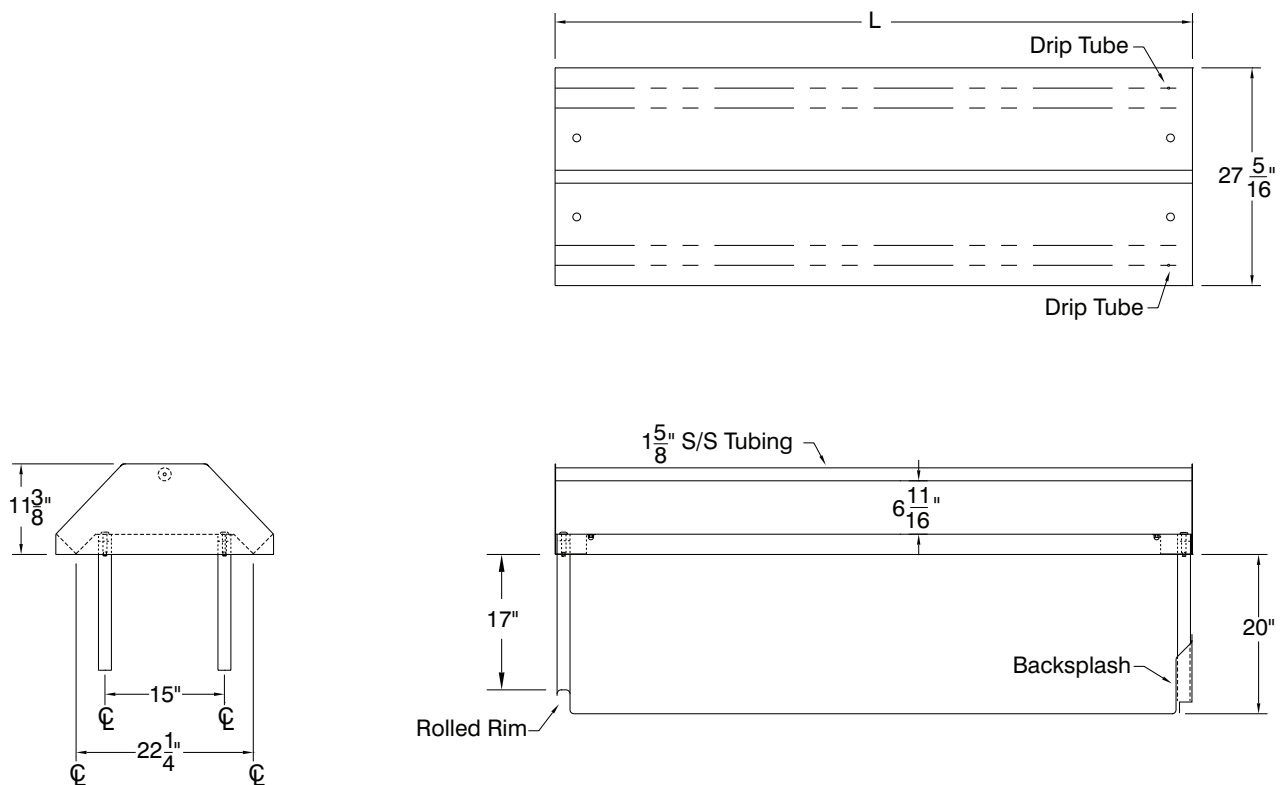
TOL  $\pm .125"$

ALL DIMENSIONS ARE TYPICAL

## DTA-79

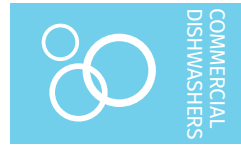


## DTA-79S





Project \_\_\_\_\_  
AIA # \_\_\_\_\_ SIS # \_\_\_\_\_  
Item # \_\_\_\_\_ Quantity \_\_\_\_\_ C.S.I. Section 114000



## CL44eN-BAS ELECTRIC

### High Temperature Rack Conveyor Dishwashing Machine



### SPECIFIER STATEMENT

Specified dishwasher will be Hobart CL44eN Base electric tank heat model with Opti-Rinse™. Includes insulated ergonomic cabinet style doors, dirty water indicator, configurable “intelligent” de-lime notification, top mounted computer controls, and NSF approved pot and pan cycle mode. The wash tank utilizes durable precision pressure sensor monitors in lieu of conventional mechanical floats. The 19.5" standard chamber height will accommodate up to (6) standard sheet pans at a time on an open-end sheet pan rack.

### STANDARD FEATURES

- + 202 racks per hour
- + Opti-Rinse™ system
- + Rapid return conveyor drive mechanism
- + Large double door opening for ease of cleaning
- + Doors are insulated & hinged with door interlock switches
- + 19.5" chamber height opening (accepts sheet pans)
- + Top mounted micro-processor control module
- + Energy saver mode (programmable auto-shut down)
- + Dirty water indicator
- + Manager activated low temperature alert
- + NSF rated configurable pot and pan dwell mode
- + Configurable “intelligent” delime notification
- + Service diagnostics
- + Self-aligning wash manifolds
- + Stainless steel anti-clogging wash arms
- + Stainless steel self-draining pump and impeller
- + Single, sloping scrap screen and deep scrap basket
- + Stainless panels enclose perimeter and bottom
- + Door actuated drain closure
- + Convertible hot water or low temp final rinse
- + Vent fan control
- + Booster heater control
- + ENERGY STAR® Certified

### OPTIONS & ACCESSORIES (Available at extra cost)

- ☐ Standard, short and extended stainless steel vent hoods
- ☐ Internal stainless steel pressure-less 30 kW booster heater field convertible to 15 kW (booster includes PRV)
  - + Dual point electrical connection standard on 208/60/3 and 240/60/3 voltage machines, when equipped with internal booster; single point kits available (see page 3)
  - + Single point connection standard on 480/60/3 and 600/60/3 voltage machines, when equipped with internal booster
- ☐ Direct drive unloader – adds 38" length. Reference spec F39520 for more details
- ☐ Side loader – SL23 adds 23" length, SL30 adds 30" length. Reference specs F40926 and F40927 for more details
- ☐ Blower-dryer – adds 33¾" to length. Reference spec F40252 for more details (ships separate from dishmachine, contact Hobart Service for installation)
- ☐ Drain water tempering kit (field installed)
- ☐ Flanged feet kit (requires two kits)
- ☐ Higher than standard chamber (24" opening)
- ☐ Table limit switch with 10' wire
- ☐ Correctional package (contact Hobart for details)
- ☐ Pressure regulator valve (PRV), for use with external booster
- ☐ Water shock absorber kit
- ☐ Factory-mounted circuit breakers (contact Hobart for details)
- ☐ Field installed single point kits available for 208/60/3 and 240/60/3 machines when equipped with internal booster

CLen SERIES – CL44eN-BAS ELECTRIC

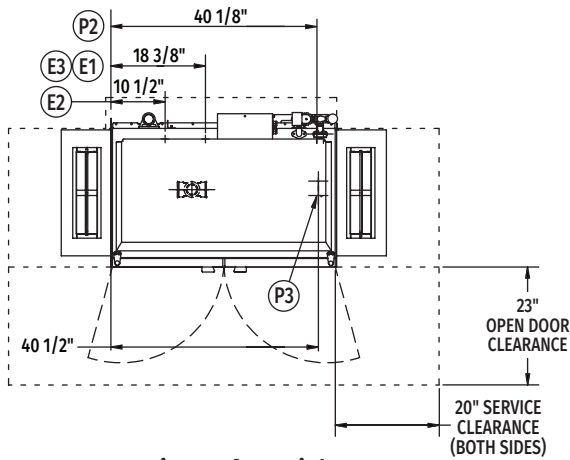
Approved by \_\_\_\_\_ Date \_\_\_\_\_ Approved by \_\_\_\_\_ Date \_\_\_\_\_



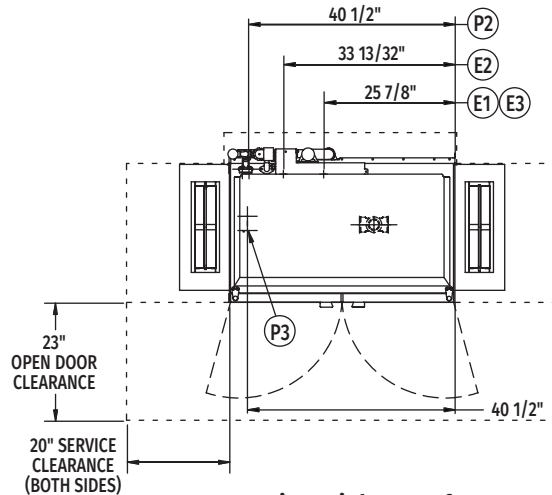
# CL44eN-BAS ELECTRIC

## High Temperature Rack Conveyor

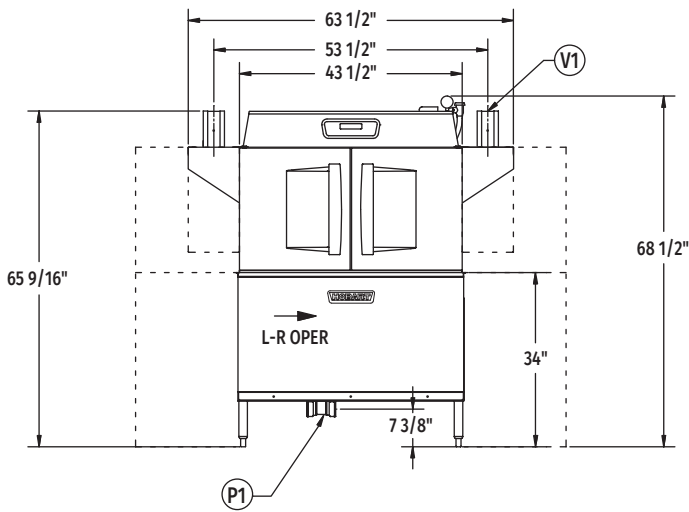
### Dishwashing Machine



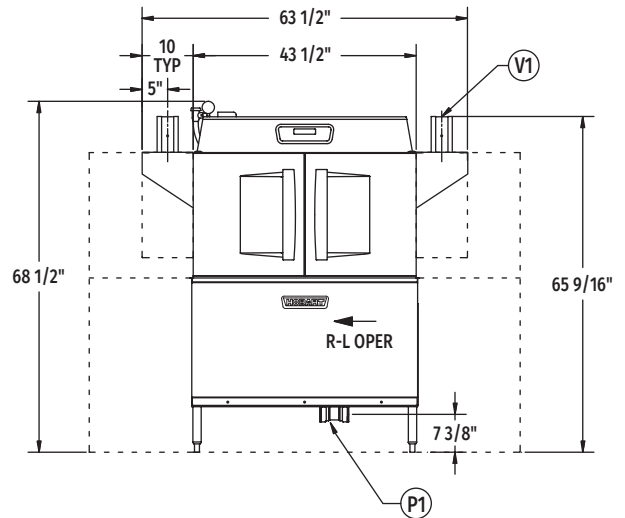
Top View Left to Right



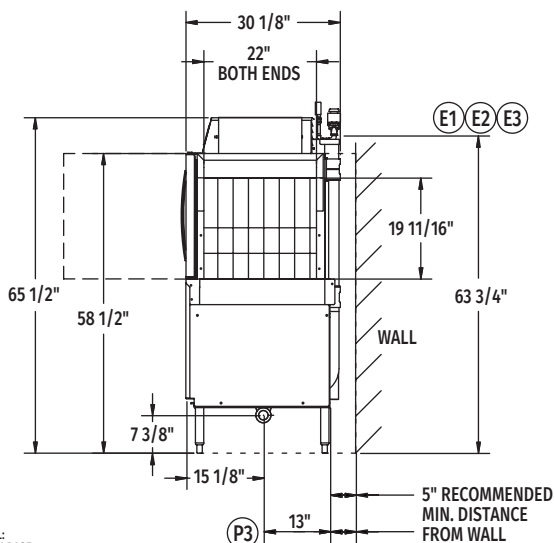
Top View Right to Left



Front View Left to Right

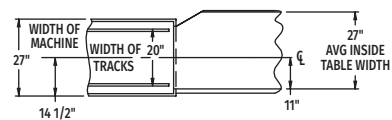


Front View Right to Left

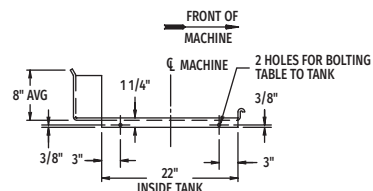


Side View

Tabling Connection: 44" inside tank (at table connection)



Suggested Track and Table Layout



View Showing Hole Locations in Turned Down Portion of Table

MODEL:  
CL44eN BASE  
L-R OPERATION  
D-974801  
REV B

MODEL:  
CL44eN BASE  
R-L OPERATION  
D-974800  
REV B





# CL44eN-BAS ELECTRIC

## High Temperature Rack Conveyor Dishwashing Machine

### LEGEND

| Electrical Connections                                                           |                                                                                                                                                                       |
|----------------------------------------------------------------------------------|-----------------------------------------------------------------------------------------------------------------------------------------------------------------------|
| Required when machine equipped with<br><b>SINGLE POINT ELECTRICAL CONNECTION</b> |                                                                                                                                                                       |
| <b>E1</b>                                                                        | Tank heat, motors, controls AND 30kW booster heater – multiple knockouts provided, 63-3/4" AFF.                                                                       |
| Required when machine equipped with<br><b>DUAL POINT ELECTRICAL CONNECTION</b>   |                                                                                                                                                                       |
| <b>E2</b>                                                                        | Tank heat, motors and controls – multiple knockouts provided, 63-3/4" AFF.                                                                                            |
| <b>E3</b>                                                                        | Internal 30kW booster heater – multiple knockouts provided, 63-3/4" AFF.                                                                                              |
| Multiple knockouts provided for 2", 1" and 1/2" trade size conduits.             |                                                                                                                                                                       |
| Plumbing Connections                                                             |                                                                                                                                                                       |
| <b>P1</b>                                                                        | Drain. May be drained to either side of valve, plug opposite side 2" FPT. Recommend a floor drain minimum of 12" from machine for access and maintenance. 7-3/8" AFF. |
| <b>P2</b>                                                                        | Hot water. 1/2" FPT connection. 1/2", 11-3/16" AFF. See plumbing notes for required temperatures.                                                                     |
| <b>P3</b>                                                                        | Optional cold water connection for drain water tempering 1/2" FPT, cold water temperature 80°F, maximum 7-3/8" AFF.                                                   |
| Vent Connections                                                                 |                                                                                                                                                                       |
| <b>V1</b>                                                                        | Optional vent hoods, 4" x 16" vent stack with damper.                                                                                                                 |

### SPECIFICATIONS

#### Capacities

|                                  |     |
|----------------------------------|-----|
| Racks Per Hour (NSF rated)       | 202 |
| Wash Tank (U.S. gallons)         | 23  |
| Conveyor Speed (feet per minute) | 5.6 |

#### Motor Horsepower

|       |     |
|-------|-----|
| Drive | 1/6 |
| Wash  | 2   |

#### Water Consumption

|                                               |      |
|-----------------------------------------------|------|
| U.S. Gallons per Hour (maximum use at 20 PSI) | 126  |
| U.S. Gallons per Rack                         | 0.62 |
| Peak Drain Flow (U.S. gallons per minute)     | 38   |

#### Heating

|                                                         |    |
|---------------------------------------------------------|----|
| Tank Heat, Electric (kW)                                | 15 |
| Optional Electric Booster (built-in) (kW for 40°F rise) | 15 |
| Optional Electric Booster (built-in) (kW for 70°F rise) | 30 |

#### Venting

|                          |     |
|--------------------------|-----|
| Load End (minimum CFM)   | 200 |
| Unload End (minimum CFM) | 400 |

**Shipping Weight (approximate)** . . . . . 594 lbs.

**Crated Dimensions.** . . . . . 53"L x 38"W x 78"H

| <b>E1</b> | Single Point Electrical Connection with internal 30 kW Booster Heater |                                                                |                                                                  |
|-----------|-----------------------------------------------------------------------|----------------------------------------------------------------|------------------------------------------------------------------|
| Voltage   | (E1) Tank Heat, Motors, Controls<br>30kW Booster Heater               |                                                                | Single Point Service Connection                                  |
|           | Rated<br>Amps                                                         | Minimum Supply Circuit Ampacity /<br>Maximum Protective Device |                                                                  |
| 208/60/3  | 138.9                                                                 | 175                                                            | Field Installed <b>SGLPT-KIT4-CLE</b> required, order separately |
| 240/60/3  | 132.8                                                                 | 150                                                            | Field Installed <b>SGLPT-KIT2-CLE</b> required, order separately |
| 480/60/3  | 68.0                                                                  | 90                                                             | Ships Standard, Factory Installed                                |
| 600/60/3  | 47.1                                                                  | 60                                                             | Ships Standard, Factory Installed                                |

| <b>E2</b> | Dual Point Electrical Connection with Internal 30 kW Booster Heater                                       |                                                                   |                          |                                                                   |                               |
|-----------|-----------------------------------------------------------------------------------------------------------|-------------------------------------------------------------------|--------------------------|-------------------------------------------------------------------|-------------------------------|
| <b>E3</b> | (For machines without internal booster heater, refer to E2, Tank Heat, Motors & Controls connection only) |                                                                   |                          |                                                                   |                               |
| Voltage   | (E2) Tank Heat, Motors, Controls                                                                          |                                                                   | (E3) 30kW Booster Heater |                                                                   | Dual Point Service Connection |
|           | Rated<br>Amps                                                                                             | Minimum Supply Circuit<br>Ampacity / Maximum<br>Protective Device | Rated<br>Amps            | Minimum Supply Circuit<br>Ampacity / Maximum<br>Protective Device |                               |
| 208/60/3  | 55.0                                                                                                      | 70                                                                | 83.9                     | 90                                                                | Dual Point Ships Standard     |
| 240/60/3  | 52.6                                                                                                      | 70                                                                | 80.2                     | 90                                                                | Dual Point Ships Standard     |
| 480/60/3  | 27.9                                                                                                      | 40                                                                | 40.1                     | 50                                                                | Field Convertible             |
| 600/60/3  | 20.3                                                                                                      | 25                                                                | 26.9                     | 40                                                                | Field Convertible             |



# CL44eN-BAS ELECTRIC

## High Temperature Rack Conveyor

### Dishwashing Machine

**WARNING:** Plumbing and electrical connections should be made by qualified personnel who will observe all the applicable plumbing, sanitary, safety codes and National Electrical Code.

**Plumbing Notes:** Minimum incoming water temperatures: 110°F for 30kW internal booster, 140°F for 15kW field converted internal booster, 180°F without internal booster. Building flowing water pressure to dish machine is 20 PSI, (+/- 5 PSI). For non-booster machines, a PRV with internal expansion bypass is required. When ordered as an accessory, ½" brass regulator must be installed before the booster. Water temperature to the regulator must not exceed 140°F.

Recommended water hardness to be 3 grains or less for best results.

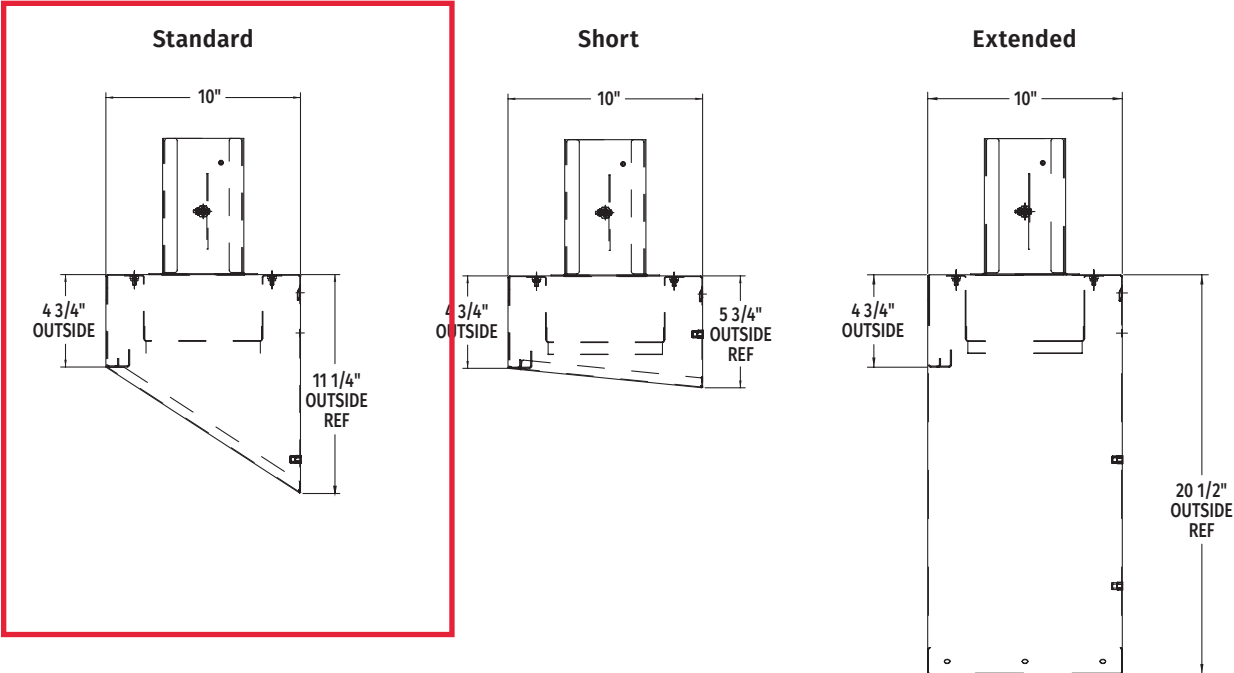
**Electrical Note:** Dishmachine not provided with internal GFCI protection.

| CL44eN-BAS Electric Heat Dissipation |         |          |
|--------------------------------------|---------|----------|
| Booster                              | BTU/HR. |          |
|                                      | Latent  | Sensible |
| Without Booster                      | 14,700  | 6,300    |
| 15kW Booster                         | 28,300  | 12,100   |
| 30kW Booster                         | 41,800  | 17,900   |

**NOTE:** 30kW Booster Heater field convertible to 15kW when 140°F incoming water provided. (Conversion instructions located in machine control box. Contact factory for 15kW booster amperage ratings.)

**NOTE:** Additional CLeN Voltages and Amperages are available, see document F40972.

### VENT HOOD OPTIONS (Adjustable, vent stack can be adjusted 1" to either side)



As continued product improvement is a policy of Hobart, specifications are subject to change without notice.





# STAINLESS STEEL WALL SHELVES



Item #: \_\_\_\_\_ Qty #: \_\_\_\_\_  
Model #: \_\_\_\_\_  
Project #: \_\_\_\_\_



## FEATURES:

Brackets can be positioned to accommodate wall studs.  
Furnished with a 1-5/8" Bullnose edge with a 1-1/2" turn-up edge at rear. Ends are turned down square.

## MATERIAL:

**16 Gauge Series** - 304 stainless steel polished to a satin finish.  
**18 Gauge Series** - 430 stainless steel polished to a satin finish.

## CONSTRUCTION:

Secured to wall by means of bolts through support brackets.  
Units 7 ft. and larger are furnished with 3 brackets.

| 10" Wide |              |           |             | 12" Wide     |           |             | 15" Wide     |           |             | 18" Wide     |           |             |                 |
|----------|--------------|-----------|-------------|--------------|-----------|-------------|--------------|-----------|-------------|--------------|-----------|-------------|-----------------|
| L        | 16 Ga.       | 18 Ga.    | Approx. Wt. | 16 Ga.       | 18 Ga.    | Approx. Wt. | 16 Ga.       | 18 Ga.    | Approx. Wt. | 16 Ga.       | 18 Ga.    | Approx. Wt. | Approx. Cu. Ft. |
| 24"      | WS-10-24-16  | WS-10-24  | 8 lbs.      | WS-12-24-16  | WS-12-24  | 9 lbs.      | WS-15-24-16  | WS-15-24  | 11 lbs.     | WS-18-24-16  | WS-18-24  | 14 lbs.     | 3               |
| 30"      | -            | -         | -           | WS-12-30-16  | WS-12-30  | 12 lbs.     | -            | -         | -           | -            | -         | -           | 4               |
| 36"      | WS-10-36-16  | WS-10-36  | 10 lbs.     | WS-12-36-16  | WS-12-36  | 12 lbs.     | WS-15-36-16  | WS-15-36  | 15 lbs.     | WS-18-36-16  | WS-18-36  | 21 lbs.     | 4               |
| 42"      | -            | -         | -           | WS-12-42-16  | WS-12-42  | 14 lbs.     | -            | -         | -           | -            | -         | -           | 5               |
| 48"      | WS-10-48-16  | WS-10-48  | 12 lbs.     | WS-12-48-16  | WS-12-48  | 14 lbs.     | WS-15-48-16  | WS-15-48  | 18 lbs.     | WS-18-48-16  | WS-18-48  | 24 lbs.     | 5               |
| 60"      | WS-10-60-16  | WS-10-60  | 15 lbs.     | WS-12-60-16  | WS-12-60  | 17 lbs.     | WS-15-60-16  | WS-15-60  | 23 lbs.     | WS-18-60-16  | WS-18-60  | 28 lbs.     | 6               |
| 72"      | WS-10-72-16  | WS-10-72  | 17 lbs.     | WS-12-72-16  | WS-12-72  | 21 lbs.     | WS-15-72-16  | WS-15-72  | 28 lbs.     | WS-18-72-16  | WS-18-72  | 32 lbs.     | 7               |
| 84"      | WS-10-84-16  | WS-10-84  | 20 lbs.     | WS-12-84-16  | WS-12-84  | 25 lbs.     | WS-15-84-16  | WS-15-84  | 32 lbs.     | WS-18-84-16  | WS-18-84  | 36 lbs.     | 8               |
| 96"      | WS-10-96-16  | WS-10-96  | 23 lbs.     | WS-12-96-16  | WS-12-96  | 28 lbs.     | WS-15-96-16  | WS-15-96  | 36 lbs.     | WS-18-96-16  | WS-18-96  | 42 lbs.     | 10              |
| 108"     | WS-10-108-16 | WS-10-108 | 28 lbs.     | WS-12-108-16 | WS-12-108 | 32 lbs.     | WS-15-108-16 | WS-15-108 | 40 lbs.     | WS-18-108-16 | WS-18-108 | 48 lbs.     | 11              |
| 120"     | WS-10-120-16 | WS-10-120 | 32 lbs.     | WS-12-120-16 | WS-12-120 | 36 lbs.     | WS-15-120-16 | WS-15-120 | 44 lbs.     | WS-18-120-16 | WS-18-120 | 54 lbs.     | 12              |
| 132"     | WS-10-132-16 | WS-10-132 | 36 lbs.     | WS-12-132-16 | WS-12-132 | 42 lbs.     | WS-15-132-16 | WS-15-132 | 49 lbs.     | WS-18-132-16 | WS-18-132 | 60 lbs.     | 13              |
| 144"     | WS-10-144-16 | WS-10-144 | 40 lbs.     | WS-12-144-16 | WS-12-144 | 48 lbs.     | WS-15-144-16 | WS-15-144 | 55 lbs.     | WS-18-144-16 | WS-18-144 | 66 lbs.     | 14              |



Customer Service Available To Assist You 1-800-645-3166 8:30 am - 7:00 pm E.S.T.

For Orders & Customer Service:

Email: [customer@advancetabco.com](mailto:customer@advancetabco.com) or Fax: 631-242-6900

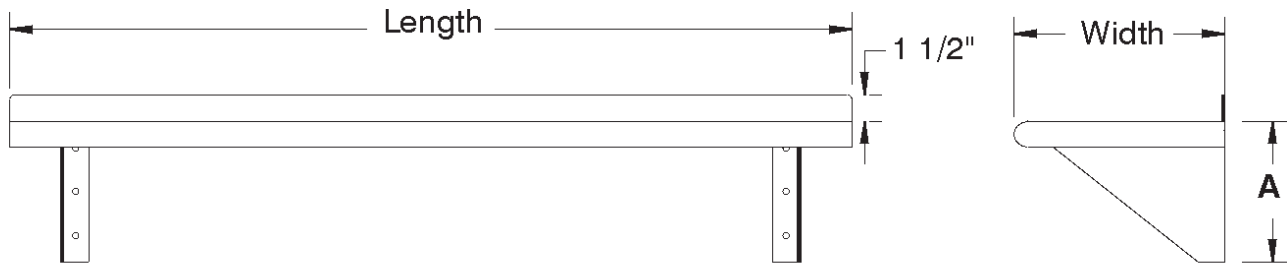
For Smart Fabrication™ Quotes:

Email: [smartfab@advancetabco.com](mailto:smartfab@advancetabco.com) or Fax: 631-586-2933

# DETAILS and SPECIFICATIONS

TOL ± .500"

ALL DIMENSIONS ARE TYPICAL

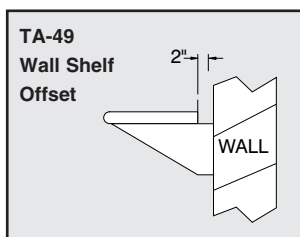


| Width | A       |
|-------|---------|
| 10"   | 8 1/2"  |
| 12"   | 10 1/2" |
| 15"   | 13 1/2" |
| 18"   | 16 1/2" |

**Load Capacity = 20 lbs. per sq. ft.**  
(Evenly Distributed Weight)

## Wall Shelf Options

|                |                                          |
|----------------|------------------------------------------|
| <b>PRT-1</b>   | Printer Shelf                            |
| <b>TA-22A</b>  | Square Edge Shelf                        |
| <b>TA-26</b>   | Welded Shelf Brackets                    |
| <b>TA-49</b>   | Wall Shelf 2" Offset                     |
| <b>TA-71</b>   | Heat Lamp Provision                      |
| <b>TA-77</b>   | Check Minder                             |
| <b>TA-77A</b>  | Concealer for Heat Lamp (Requires TA-77) |
| <b>TA-99A</b>  | 14 Ga. S/S 304 Upgrade for Overshelves   |
| <b>TA-100A</b> | Bullnose Edge On All 4 Sides of Shelf    |
| <b>TA-102</b>  | 6" Cantilever Shelf Offset               |



# STAINLESS STEEL DISHTABLES ISLAND CLEAN

**NEW** Tile Edge Design



Modified to U-  
shape

Item #: \_\_\_\_\_ Qty #: \_\_\_\_\_

Model #: \_\_\_\_\_

Project #: \_\_\_\_\_



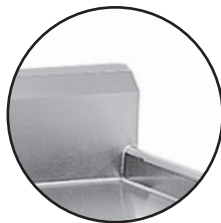
**SPEC-LINE**  
DTC-G70-60R Shown

**Optional Stainless Steel  
UNDERSHELF  
Die Cast LEG CLAMP**

secured to shelf eliminates  
unsightly nuts & bolts



**10-1/2" EXTRA LARGE  
Bold Looking Backsplash  
with 2" return and tile edge**



**Spec-Line:** 14 ga. 304 Series Stainless Steel Top.  
16 ga. 304 Stainless Steel Legs Stainless Steel Legs  
with Welded Cross Bracing & Stainless Steel Bullet Feet.

**UPGRADED!** 16 ga. 304 Series Stainless Steel Top.  
**Standard:** 16 ga. 304 Stainless Steel Legs Stainless Steel Legs  
with Welded Cross Bracing & Stainless Steel Bullet Feet.

**Super Saver:** 16 ga. 304 Series Stainless Steel Top.  
Galvanized Legs with Plastic Bullet Feet.

## FEATURES:

Tile edge for ease of installation.

Dishtable system consists of SOIL and CLEAN sections.

Table is furnished with 10-1/2" splash with a 2" return.

## CONSTRUCTION:

All TIG welded.

Welded areas blended to match adjacent surfaces and to a  
satin finish.

Stainless Steel Gussets welded to a stainless steel  
support channel.

| ACCESSORIES | Model # | Qty |
|-------------|---------|-----|
| Undershelf  |         |     |
| Wall Shelf  |         |     |
|             |         |     |
|             |         |     |

Nominal sizing on all  
dishtables for ease of  
installation.

|                 |      | 14 Gauge 304<br>16 Ga. Stainless Steel Legs | 16 Gauge 304<br>Stainless Steel Legs | 16 Gauge 304<br>Galvanized Legs |                |  |
|-----------------|------|---------------------------------------------|--------------------------------------|---------------------------------|----------------|--|
| Nominal<br>Size | "L"  | SPEC-LINE                                   | STANDARD                             | SUPER SAVER                     | Approx.<br>Wt. |  |
| 4 Ft.           | 47"  | DTC-G30-48L or R                            | DTC-G70-48L or R                     | DTC-G60-48L or R                | 145 lbs.       |  |
| 5 Ft.           | 59"  | DTC-G30-60L or R                            | DTC-G70-60L or R                     | DTC-G60-60L or R                | 165 lbs.       |  |
| 6 Ft.           | 71"  | DTC-G30-72L or R                            | DTC-G70-72L or R                     | DTC-G60-72L or R                | 190 lbs.       |  |
| 7 Ft.           | 83"  | DTC-G30-84L or R                            | DTC-G70-84L or R                     | DTC-G60-84L or R                | 205 lbs.       |  |
| 8 Ft.           | 95"  | DTC-G30-96L or R                            | DTC-G70-96L or R                     | DTC-G60-96L or R                | 215 lbs.       |  |
| 9 Ft.           | 107" | DTC-G30-108L or R                           | DTC-G70-108L or R                    | DTC-G60-108L or R               | 310 lbs.       |  |
| 10 Ft.          | 119" | DTC-G30-120L or R                           | DTC-G70-120L or R                    | DTC-G60-120L or R               | 340 lbs.       |  |
| 12 Ft.          | 143" | DTC-G30-144L or R                           | DTC-G70-144L or R                    | DTC-G60-144L or R               | 360 lbs.       |  |

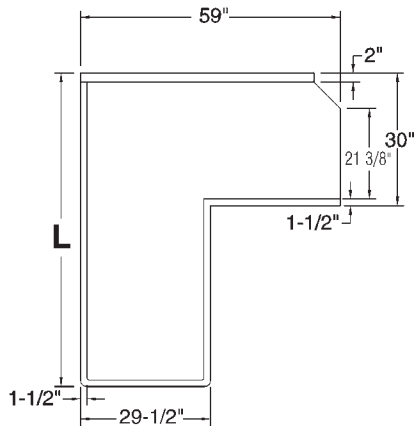
# DIMENSIONS and SPECIFICATIONS

TOL  $\pm .500"$

ALL DIMENSIONS ARE TYPICAL

## SEE DISH MACHINE COMPATIBILITY CHART TO ENSURE PROPER FIT

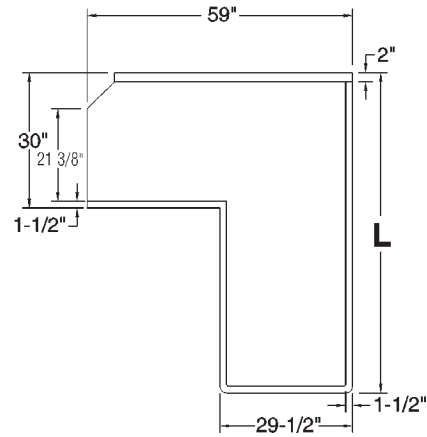
Dish Machine Compatibility Chart can be found on our website at [www.advancetabco.com](http://www.advancetabco.com) under "Product Support"



ISLAND CLEAN LEFT

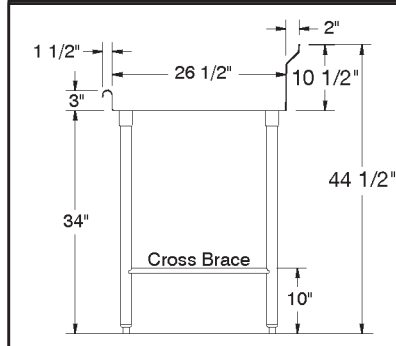
DISH  
MACHINE

OPERATOR

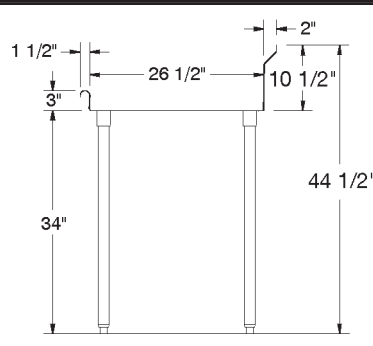


ISLAND CLEAN RIGHT

### SPEC-LINE & STANDARD

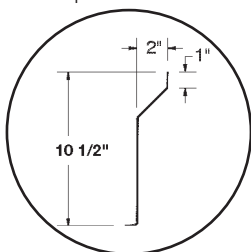


### SUPER SAVER



*CUSTOMIZE YOUR OWN SYSTEM  
by Ordering Optional Accessories from our  
PRODUCT & PRICE GUIDE*

Splash Detail



| Description                  | SPEC-LINE                | STANDARD                 | SUPER SAVER              |
|------------------------------|--------------------------|--------------------------|--------------------------|
| <b>Material</b>              | <b>14 Ga. 304 Series</b> | <b>16 Ga. 304 Series</b> | <b>16 Ga. 304 Series</b> |
| <b>1 5/8" Dia. Legs</b>      | Stainless Steel          | Stainless Steel          | Galvanized               |
| <b>Gussets</b>               | Stainless Steel          | Stainless Steel          | Stainless Steel          |
| <b>Bullet Feet (1" adj.)</b> | Stainless Steel          | Stainless Steel          | Plastic                  |
| <b>Cross Bracing</b>         | Welded                   | Welded                   | Optional                 |





Model: \_\_\_\_\_ Item #: \_\_\_\_\_ Date: \_\_\_\_\_  
Project: \_\_\_\_\_ Qty: \_\_\_\_\_ Approved By: \_\_\_\_\_

## Hand Sinks w/ Side Splashes

## Hand Sinks

|                                                                                                                                                                        |                                                                                                                                                                        |                                                                                                                                         |
|------------------------------------------------------------------------------------------------------------------------------------------------------------------------|------------------------------------------------------------------------------------------------------------------------------------------------------------------------|-----------------------------------------------------------------------------------------------------------------------------------------|
| <b>HS-2-LS/RS</b><br>16"W with Side<br>Splash on one side<br><br><i>HS-2-LS shown</i> | <b>HS-9-LS/RS</b><br>12"W with Side<br>Splash on one side<br><br><i>HS-9-LS shown</i> | <b>HS-5</b><br>16"W with Side<br>Splashes & P-Trap<br> |
| <b>HS-23</b><br>16"W with<br>Side Splashes &<br>Support Brackets<br>                 | <b>HS-26L</b><br>16"W with<br>Side Splashes<br>                                      | <b>HS-30L</b><br>12"W with<br>Side Splashes<br>       |
| <b>HS-32</b><br>12"W with Side Splashes and<br>Soap & Towel Dispenser<br>           | <b>HS-33</b><br>16"W with Side Splashes and<br>Soap & Towel Dispenser<br>           |                                                                                                                                         |

### SPECIFICATIONS

|                            |                                                                                                                                                                                                                             |
|----------------------------|-----------------------------------------------------------------------------------------------------------------------------------------------------------------------------------------------------------------------------|
| <b>Fabrication</b>         | 20 gauge stainless steel                                                                                                                                                                                                    |
| <b>Bowl</b>                | 9-3/4"W x 12-1/2"L x 6" Deep drawn bowl with stamped rim to prevent spillage                                                                                                                                                |
| <b>Wall Mount Bracket</b>  | Mount top of bracket 41-1/2" from floor. Offset design for added strength.                                                                                                                                                  |
| <b>Faucet</b>              | 4" Center Wall Mount Faucet with 4-1/2" Double Bend Spout, 0.5 GPM                                                                                                                                                          |
| <b>Drain</b>               | 1-1/2" Stainless steel drain                                                                                                                                                                                                |
| <b>Drain with Overflow</b> | Stainless steel with plastic overflow tube and inlet                                                                                                                                                                        |
| <b>Plumbing</b>            | 1/2" IPS hot and cold water. 1-1/2" IPS drain outlet. Install at 34" working height. 1/2" faucet supply 27-1/2" from floor. Install hot & cold water stops 27-1/2" from floor. Install 1-1/2" drain line 24-1/4" from floor |
| <b>Lead Free</b>           | Faucet included is certified to NSF/ANSI 61 and 372 and conforms with the lead content requirements for lead free plumbing as defined by the U.S. Safe Drinking Water Act. Hand sink is certified NSF-2.                    |

### OPTIONAL ACCESSORIES

|                |                                                      |
|----------------|------------------------------------------------------|
| <b>21-133L</b> | Wrist Blade Handle Kit                               |
| <b>21-300L</b> | Silver Series Faucet Valve Repair Kit                |
| <b>23-157</b>  | Overflow Assembly                                    |
| <b>H-100</b>   | Chrome Plated 1-1/2" IPS P-Trap                      |
| <b>H-101</b>   | Deck Mount Soap Dispenser                            |
| <b>H-105</b>   | Wall Mount Towel Dispenser                           |
| <b>H-108-2</b> | 16"W x 15"D Stainless Steel Skirt, Factory Installed |
| <b>H-108-9</b> | 12"W x 17"D Stainless Steel Skirt, Factory Installed |
| <b>H-110</b>   | Side Support Brackets                                |
| <b>H-111</b>   | 16"W Soap & Towel Dispenser                          |
| <b>H-115</b>   | 12"W Soap & Towel Dispenser                          |
| <b>H-116</b>   | Wall Mount Soap Dispenser                            |

Warning: This product can expose you to chemicals including lead and lead compounds which are known to the State of California to cause cancer and birth defects or other reproductive harm. For more information go to [www.P65Warnings.ca.gov](http://www.P65Warnings.ca.gov).





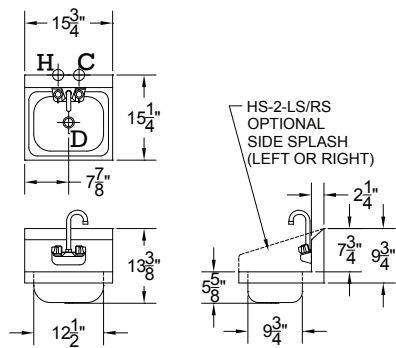
Model: \_\_\_\_\_ Item #: \_\_\_\_\_ Date: \_\_\_\_\_

Project: \_\_\_\_\_ Qty: \_\_\_\_\_ Approved By: \_\_\_\_\_

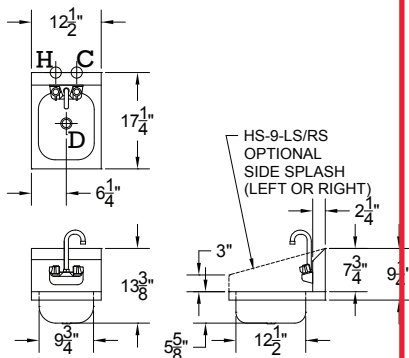
## Hand Sinks w/ Side Splashes

## Hand Sinks

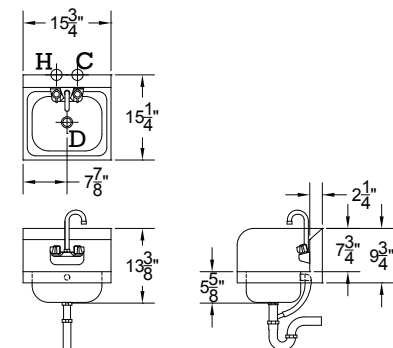
### HS-2-LS/RS



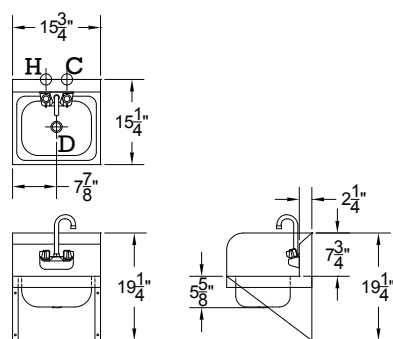
### HS-9-LS/RS



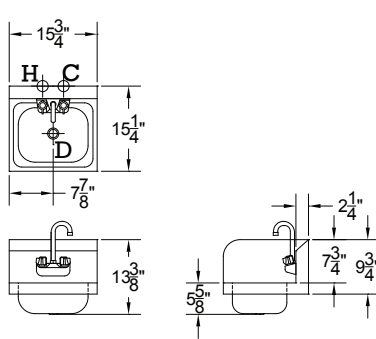
### HS-5



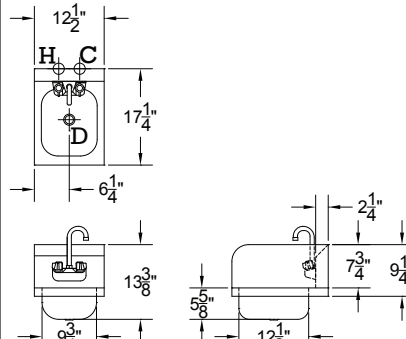
### HS-23



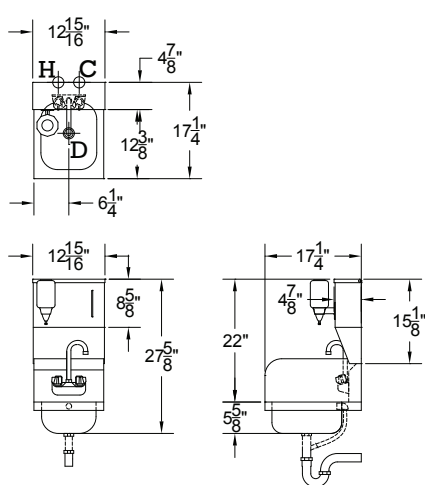
### HS-26L



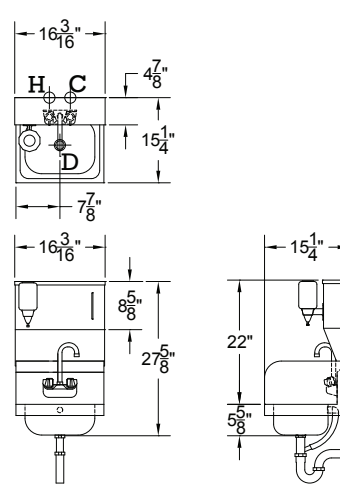
### HS-30L



### HS-32



### HS-33



|                      |          |                                                                                                                                                                                                                                                                                                                                                                                                                                                           |  |
|----------------------|----------|-----------------------------------------------------------------------------------------------------------------------------------------------------------------------------------------------------------------------------------------------------------------------------------------------------------------------------------------------------------------------------------------------------------------------------------------------------------|--|
| APPLICATION:         |          | PRODUCT NAME:<br>PRE-RINSE, SPRING STYLE,<br>BACKSPASH MOUNT                                                                                                                                                                                                                                                                                                                                                                                              |  |
| JOB NAME:            |          | <input type="checkbox"/> SPECIAL CONFIGURATION<br><input type="checkbox"/> CHECK BASE MODEL AND OPTIONS                                                                                                                                                                                                                                                                                                                                                   |  |
| QUANTITY:            | ITEM NO. | MODEL:                                                                                                                                                                                                                                                                                                                                                                                                                                                    |  |
|                      |          | <input checked="" type="checkbox"/> 13390 ULTRA SPRAY VALVE, WALL BRACKET<br><input type="checkbox"/> 13366 ULTRA SPRAY VALVE, NO WALL BRACKET                                                                                                                                                                                                                                                                                                            |  |
|                      |          | OPTIONS OR MODIFICATIONS:                                                                                                                                                                                                                                                                                                                                                                                                                                 |  |
|                      |          | <input type="checkbox"/> SUPPLY LINES (24" OR 36") CIRCLE LENGTH<br><input type="checkbox"/> ADD-ON FAUCET (6", 8", 10", 12", 14", 16") CIRCLE<br><input checked="" type="checkbox"/> IN-LINE DUAL CHECK VALVE<br><input type="checkbox"/> BRUSH<br><input checked="" type="checkbox"/> ELBOWS<br><input type="checkbox"/> VANDAL RESISTANT KIT<br><input type="checkbox"/> HANDLES (CROSS OR WRIST) CIRCLE STYLE<br><input type="checkbox"/> OTHER _____ |  |
|                      |          | FEATURES                                                                                                                                                                                                                                                                                                                                                                                                                                                  |  |
|                      |          | CONTROL VALVE<br>* 8" BACKSPASH MOUNT<br>* INTERNAL SPRING LOADED CHECK VALVES<br>* SWIVELLING SEAT DISKS<br>* HOT SIDE STEM - RIGHT HAND<br>* COLD SIDE STEM - LEFT HAND<br>* STAINLESS STEEL SEATS<br>* STAINLESS STEEL SEAT SCREWS<br>* STAINLESS STEEL HANDLE SCREWS<br>* 1/2" SLIP JOINT KIT                                                                                                                                                         |  |
|                      |          | HOSE<br>* 36" LENGTH<br>* STAINLESS STEEL END FITTINGS<br>* STAINLESS STEEL EXTERNAL JACKET<br>* 3 PLY FIBER REINFORCED INTERNAL RUBBER HOSE<br>* REPAIRABLE IN FIELD WITH SIMPLE TOOLS                                                                                                                                                                                                                                                                   |  |
|                      |          | ULTRA SPRAY VALVE<br>* LOWEST ENERGY USER - 1.15 GPM @ 60 PSI<br>* CLEANS FASTER - TEST PROVEN<br>* ENGINEERED TO LAST - NO 'O' RINGS TO LEAK<br>* INTERCHANGEABLE - FITS ALL BRANDS                                                                                                                                                                                                                                                                      |  |
|                      |          | SYSTEM LIMITS<br>* TEMP: 40°F MIN. TO 140°F MAX.<br>* PRESSURE: 200 PSI MAX. STATIC                                                                                                                                                                                                                                                                                                                                                                       |  |
|                      |          | SHIPPING WEIGHT<br>* 12.0 LBS                                                                                                                                                                                                                                                                                                                                                                                                                             |  |
| ROUGH-IN:            |          |                                                                                                                                                                                                                                                                                                                                                                                                                                                           |  |
| EPAct 2005 Compliant |          | <br>FISHER MANUFACTURING COMPANY<br>TOLL FREE: 800-421-6162 - FAX: 800-832-8238<br>information@fisher-mfg.com - www.fisher-mfg.com                                                                                                                                                                                                                                                                                                                        |  |



ANSI/A112.18.1M