

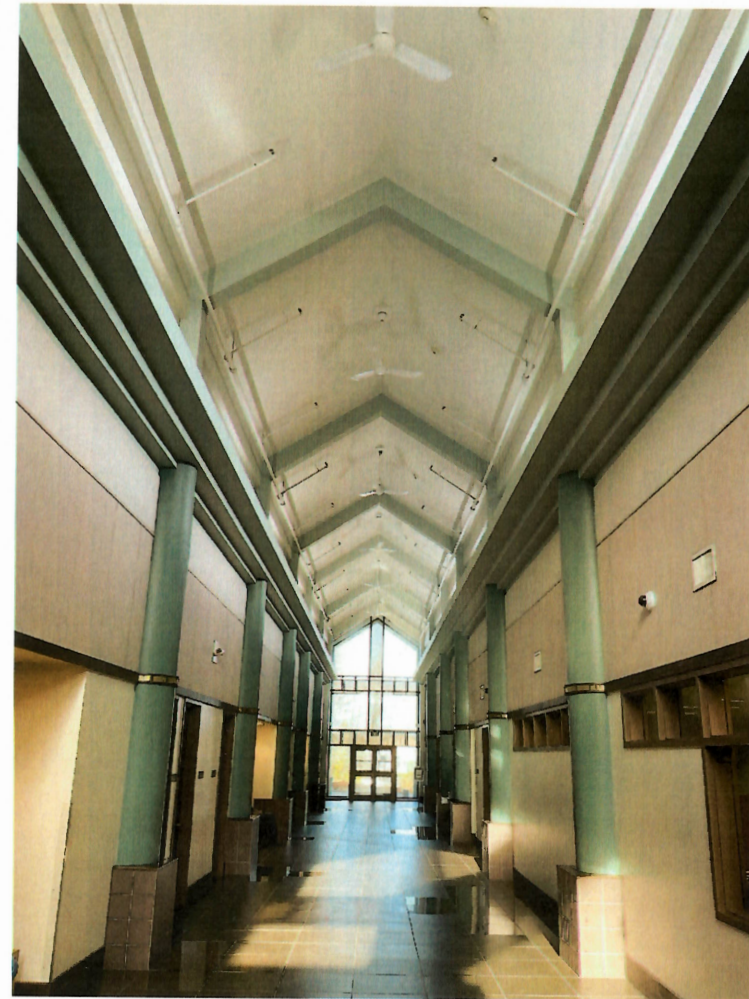


Alaska Court System

Kenai Courthouse

125 Trading Bay Rd,
Kenai, AK 99611

FEBRUARY 23, 2024
100% CONSTRUCTION DOCUMENT



VIEW OF EXISTING LOBBY 103 LOOKING NORTH



LOCATION WITH IN THE STATE OF ALASKA

Sheet List

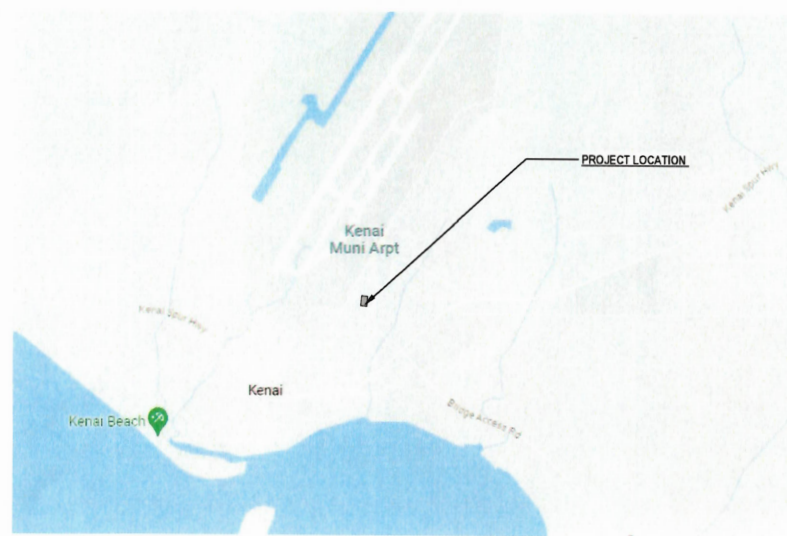
Sheet Number	Sheet Name
GENERAL	
G-001	COVER PAGE
G-002	ABBREVIATIONS AND GENERAL NOTES
ARCHITECTURAL	
A-101	FLOOR PLAN
AD-201	DEMOLITION INTERIOR ELEVATIONS
A-202	INTERIOR ELEVATIONS
A-900	3D VIEW

PROJECT DESCRIPTION

THE PROJECT SCOPE OF WORK IS LIMITED TO PARTIAL REPLACEMENT OF INTERIOR FINISHES ONLY IN ROOMS 101, 103 AND 112. ALCOVES OFF OF ROOMS 101, 103 AND 112 ARE INCLUDED IN THE SCOPE OF WORK.

WORK INCLUDES DEMOLITION OF EXISTING ACOUSTIC WALL PANELS, DEMOLITION AND REPLACEMENT OF COLUMN BASE TILES AND COLUMN BASE LEDGE, DEMOLITION AND REPLACEMENT OF COLUMN ACCENT TRIM, PREPARATION FOR NEW PAINT UP TO THE EXISTING WOOD PANELING.

MEANS OF EGRESS (EXITS AND PATH OF TRAVEL) AND OCCUPANT LOADS ARE NOT AFFECTED BY THIS FINISH REPLACEMENT SCOPE.



VICINITY MAP

Stantec Project Number: 2014295970

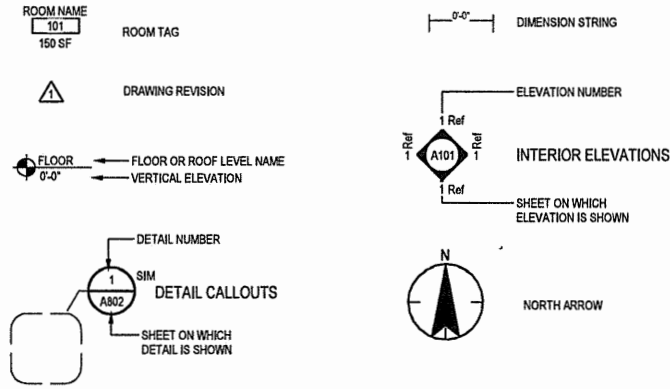


VIEW OF SITE

PROJECT LOCATION
125 TRADING BAY RD,
KENAI, AK 99611



SYMBOL LEGEND



ABBREVIATIONS

ABV	Above	MFR	Manufacturer
AL, ALUM	Aluminum	MAX	Maximum
APPROX	Approximate	MECH	Mechanical
ARCH.	Architectural, Architect	MTL	Metal
BLK	Black	MIN	Minimum
BOB	Bottom of Beam	MISC	Miscellaneous
BOT	Bottom	N/A	Not Applicable
BLDG	Building	NIC	Not in Contract
		NTS	Not to Scale
CTR	Center Line	OC	On Center
CL	Construction	REF	Reference
CONTR	Contractor	REQD	Required
COORD	Coordinate	REV.	Revision
DEMO	Demolition	RM	Room
DET	Detail		
DIFF	Difference	SIM	Similar
DIM.	Dimension	SPEC	Specifications
DIS	Distance	SQ FT	Square Foot
EA	Each	SQ IN	Square Inch
EXST, (E)	Existing	TYP	Typical
FOS	Face of Studs	UON	Unless Otherwise Noted
FOW	Face of Wall		
FT	Foot	VIF	Verify in Field
GEN	General	W/	With
GWB	Gypsum Wallboard	W/O	Without
HM	Hollow Metal	WD	Wood
IN	Inch		

GENERAL NOTES

- THE CONTRACTOR SHALL PROTECT THE EXISTING FACILITIES AND SURROUNDING GROUNDS DURING CONSTRUCTION. ALL AFFECTED AREAS SHALL BE RESTORED TO EXISTING CONDITIONS BY THE CONTRACTOR AT THE CONCLUSION OF CONSTRUCTION ACTIVITIES.
- THE CONTRACTOR SHALL FIELD VERIFY ALL PROJECT-RELATED NEW AND/OR EXISTING CONDITIONS, INCLUDING DIMENSIONS, PRIOR TO THE COMMENCEMENT OF WORK. PROMPTLY NOTIFY THE ARCHITECT AND OWNER'S REPRESENTATIVE IN WRITING OF ALL DISCREPANCIES AND/OR UNANTICIPATED CONDITIONS OBSERVED.
- DIMENSIONS TAKE PRECEDENCE OVER DRAWINGS. DO NOT SCALE DRAWINGS. THE OWNER SHALL BE NOTIFIED IF ANY DISCREPANCY OCCURS PRIOR TO CONTINUING WITH WORK.
- THE CONTRACTOR SHALL BEAR ALL EXPENSE OF REPAIR OR REPLACEMENT OF PROPERTY DAMAGED BY OPERATIONS IN CONJUNCTION WITH THE PERFORMANCE OF THE WORK.
- ALL WORK SHALL BE ACCOMPLISHED WITH QUALITY WORKMANSHIP, AND TO INDUSTRY STANDARDS. ALL MATERIALS SHALL BE INSTALLED IN STRICT ACCORDANCE WITH MANUFACTURERS' INSTRUCTIONS RECOMMENDATIONS AND NATIONAL TRADE GROUP STANDARDS UNLESS OTHERWISE NOTED.
- A/J APPROVED PLANS SHALL BE KEPT ON SITE. ALL CONSTRUCTION SETS SHALL REFLECT SAME INFORMATION. AT LEAST ONE AS-BUILT/REDLINE RECORD SET SHALL BE KEPT UPDATED BY THE CONTRACTOR AS THE PROJECT PROGRESSES AT THE PROJECT SITE.
- THE CONTRACTOR SHALL REMOVE ALL DEMOLISHED MATERIALS AND CONSTRUCTION DEBRIS FROM PREMISES AND ALL AREAS WITHIN THE AREA OF WORK SHALL BE LEFT IN A CLEAN (BROOM) CONDITION AT THE END OF EACH WORK DAY.
- THE CONTRACTOR SHALL TAKE ALL NECESSARY PRECAUTIONS TO ENSURE THE SAFETY OF THE OCCUPANTS AND WORKERS AT ALL TIMES.
- THESE DOCUMENTS HAVE BEEN PRODUCED AT DRAWING SCALES RELATED TO THEIR FULL-SIZE (22 INCH X 34 INCH). ANY DEVIATIONS FROM THIS FORMAT SIZE MAY PRODUCE DRAWING COPIES THAT ARE NOT TO SCALE. DO NOT SCALE THE DRAWINGS.
- OWNER IS RESPONSIBLE FOR ALL MOVEABLE EQUIPMENT AND FURNITURE, AND SHALL HAVE THE AREA OF WORK CLEARED OF ALL SUCH ITEMS, AS WELL AS ALL AFFECTED EMPLOYEE'S PERSONAL EFFECTS AND SUPPLIES, PRIOR TO THE START OF CONSTRUCTION, AND IS RESPONSIBLE FOR RELOCATING SAID ITEMS AFTER SUBSTANTIAL COMPLETION.
- THESE PLANS DOES NOT INCORPORATE ANY DETAILED PHASING REQUIREMENTS. IT IS ASSUMED THE AREA OF WORK WILL BE AVAILABLE IN ITS ENTIRETY TO THE CONTRACTOR FOR THE DURATION OF CONSTRUCTION, SUBJECT TO ANY OTHER RESTRICTIONS LISTED IN THE CONSTRUCTION DOCUMENTS OR IN THE CONSTRUCTION CONTRACT. THE CONTRACTOR SHALL SUBMIT A WORK PLAN INCLUDING A DETAILED SCHEDULE FOR APPROVAL BY THE OWNER.
- GENERAL CONTRACTOR TO COORDINATE WITH OWNER FOR LOCATION OF LAY-DOWN-AREA.
- REMOVE EXISTING WALL MOUNTED OBJECTS, INCLUDING BUT NOT LIMITED TO TACK BOARDS, VENTS, ETC. AS REQUIRED TO ALLOW WORK TO BE COMPLETED AND REINSTALL IN AT ORIGINAL LOCATION.
- PATCH AND REPAIR EXISTING SURFACES AND MATERIALS AFFECTED BY THE SCOPE OF WORK AND IN PREPARATION OF NEW WORK.
- EXISTING TO REMAIN SURFACES AND MATERIALS TO BE PROTECTED IN PLACE, INCLUDING BUT NOT LIMITED TO SPRINKLERS, SPRINKLER PIPING, WALL BASE, ETC.



Stantec Architecture Inc.
725 East Fireweed Lane, Suite 200
Anchorage, AK 99503-2245
Tel: (907) 276-4245 • www.stantec.com

Copyright Reserved

THESE DOCUMENTS ARE THE PROPERTY OF STANTEC ARCHITECTURE INC. AND ARE TO BE USED ONLY FOR THE PROJECT AND SITE SPECIFICALLY IDENTIFIED HEREIN. ANY REPRODUCTION OR TRANSMISSION OF THESE DOCUMENTS WITHOUT THE WRITTEN PERMISSION OF STANTEC ARCHITECTURE INC. IS STRICTLY PROHIBITED.

Consultant

Issued	By	Appd	Revision
PACKAGE G			11/14/2024
PACKAGE F			
PACKAGE E			
PACKAGE D			
PACKAGE C			
PACKAGE B			
PACKAGE A			

Permit/Seal

Alaska Court System

Kenai Courthouse

125 Trading Bay Rd, Kenai, AK 99611

Project No.: 2014295970

File Name: N/A

SO	SO	CN	2024/02/23
Dwn.	Dgn.	Chkd.	YYYY.MM.DD

Title
ABBREVIATIONS AND
GENERAL NOTES

Scale: As indicated

Revision:

Drawing No.

G-002

Consultant

PACKAGE	DATE	BY	APP'D	REVISION
PACKAGE G				YYYMMDD
PACKAGE F				YYYMMDD
PACKAGE E				YYYMMDD
PACKAGE D				YYYMMDD
PACKAGE C				YYYMMDD
PACKAGE B				YYYMMDD
PACKAGE A				YYYMMDD

Permit/Seal

Alaska Court System
Kenai Courthouse
125 Trading Bay Rd, Kenai, AK
99611

Project No.: 2014295970
File Name: N/A
SO: SO CN 2024/02/23
Dwn: Dgn: Chkd: YYYMMDD

Title
FLOOR PLAN

Scale: As indicated
Revision:
Drawing No. **A-101**

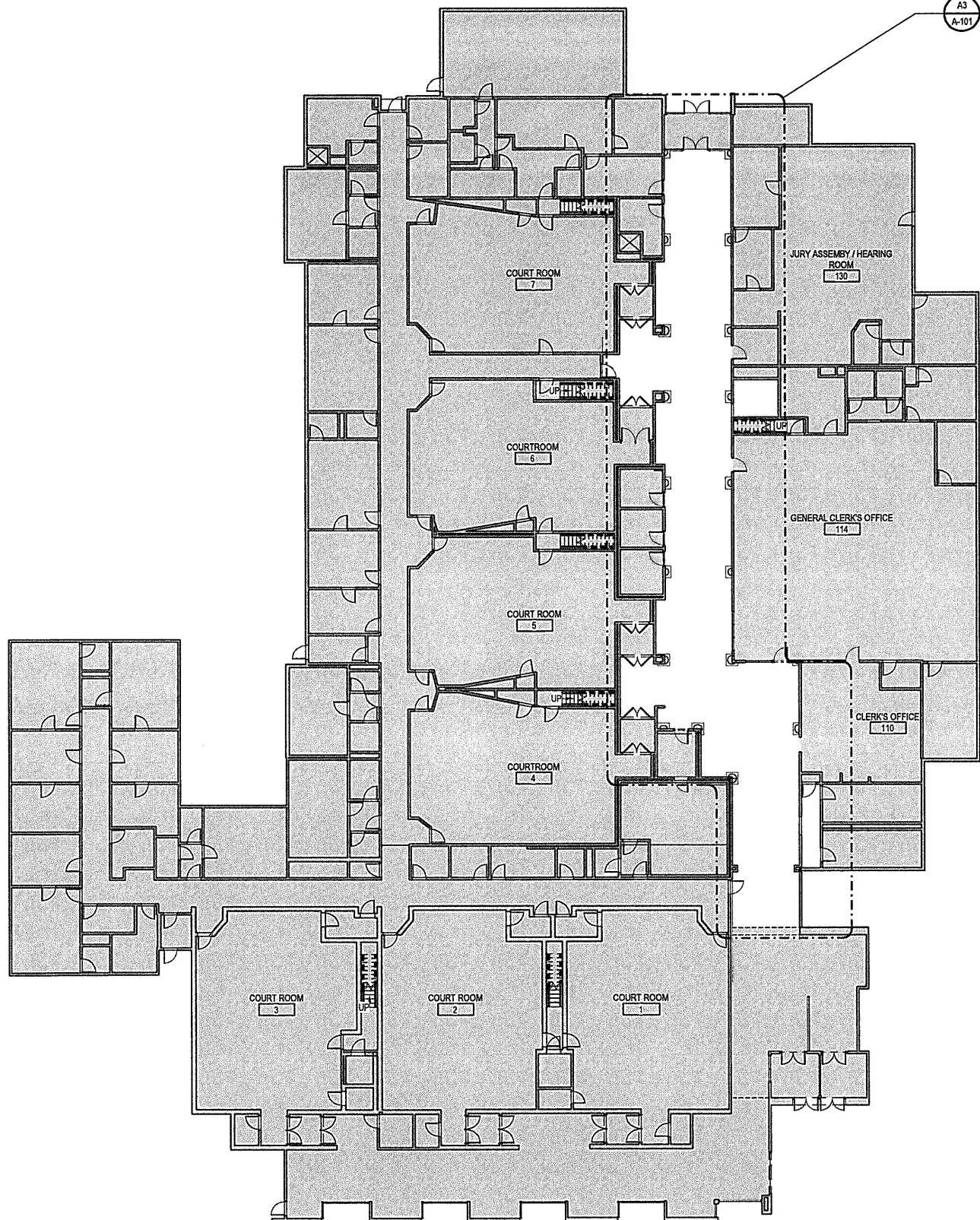
SHEET LEGEND

NO WORK

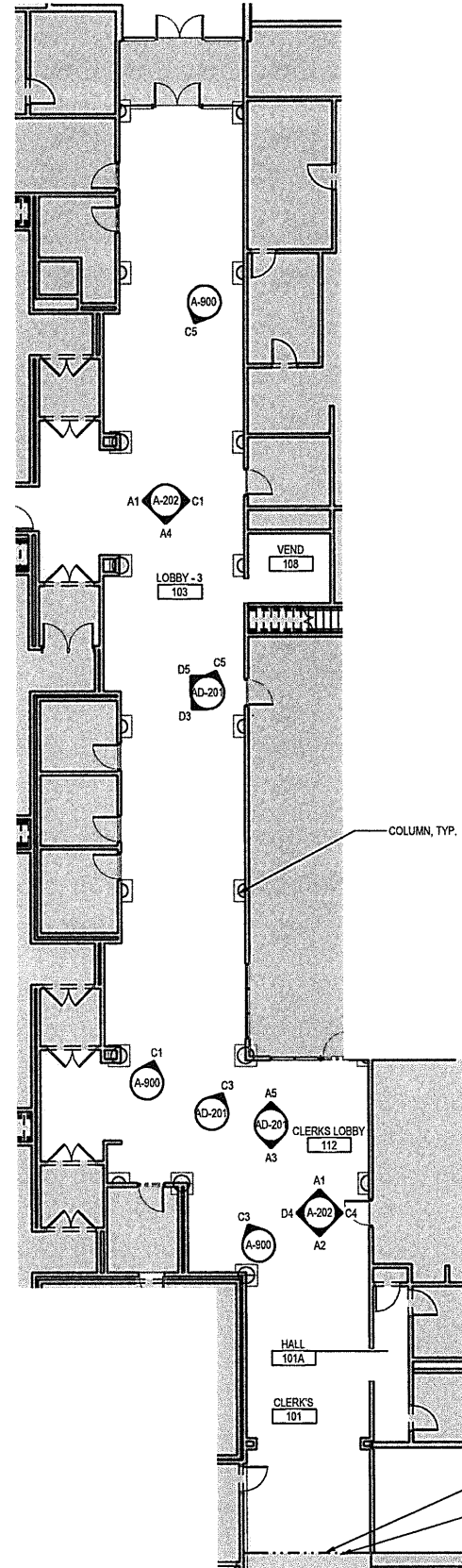
MATERIALS SCHEDULE

- | | |
|--|--|
| P-1 P-1 - PAINT
MFR: P & L
COLOR: 15-1 SNOW FLAKE
LOCATION: UPPER AND MIDDLE
SECTIONS AT LOBBY 103, CLERK'S
LOBBY, 112 AND CLERK'S 101 | SS-1 SS-1 - SOLID SURFACE
MFR: LIVINGSTONE
COLOR: (L730) CANYON CREEK
LOCATION: COLUMN BASES |
| P-2 P-2 - PAINT
MFR: PPG
COLOR: 1024-4 MOTH GRAY
LOCATION: LOWER SECTION AT
LOBBY 103, CLERK'S LOBBY, 112
AND CLERK'S 101 | TL-1 TL-1 TILE
MFR: UNITED TILE
COLOR: MOLTEN BRONZE
METALLIC
SIZE: 4-3/4" X 5-1/2"
LOCATION: COLUMN BASE |
| P-3 P-3 - PAINT
MFR: PPG
COLOR: 1024-5 STONEHEAD GREIGE
LOCATION: BEAMS AT LOBBY 103,
CLERK'S LOBBY, 112 AND CLERK'S
101 | TL-2 TL-2 TILE
MFR: UNITED TILE
COLOR: MOLTEN BRONZE
METALLIC
SIZE: 2-1/2" X 5-1/2"
LOCATION: COLUMN BASE, TOP
ROW ONLY |
| P-4 P-4 - PAINT
MFR: PPG
COLOR: 1024-6 PATCHES
LOCATION: COLUMNS, AND
ENTABLATURE AT LOBBY 103,
CLERK'S LOBBY, 112 AND
CLERK'S 101 | TP-1 TP-1 - TRIM PIECE
MFR: WILSONART
STYLE: OILED BRONZE
LOCATION: COLUMN DETAIL |

MATERIAL NOTE: SUBMIT ALL MATERIAL FINISH SAMPLES TO OWNER FOR APPROVAL



A2 REFERENCE FLOOR PLAN - LEVEL 1
A-101 1/16" = 1'-0"



A3 ENLARGED LOBBY - LEVEL 1
A-101 3/32" = 1'-0"



Project Location: Project Information
 1/23/2024 11:58:03 AM
 ORIGINAL SHEET - AN2

