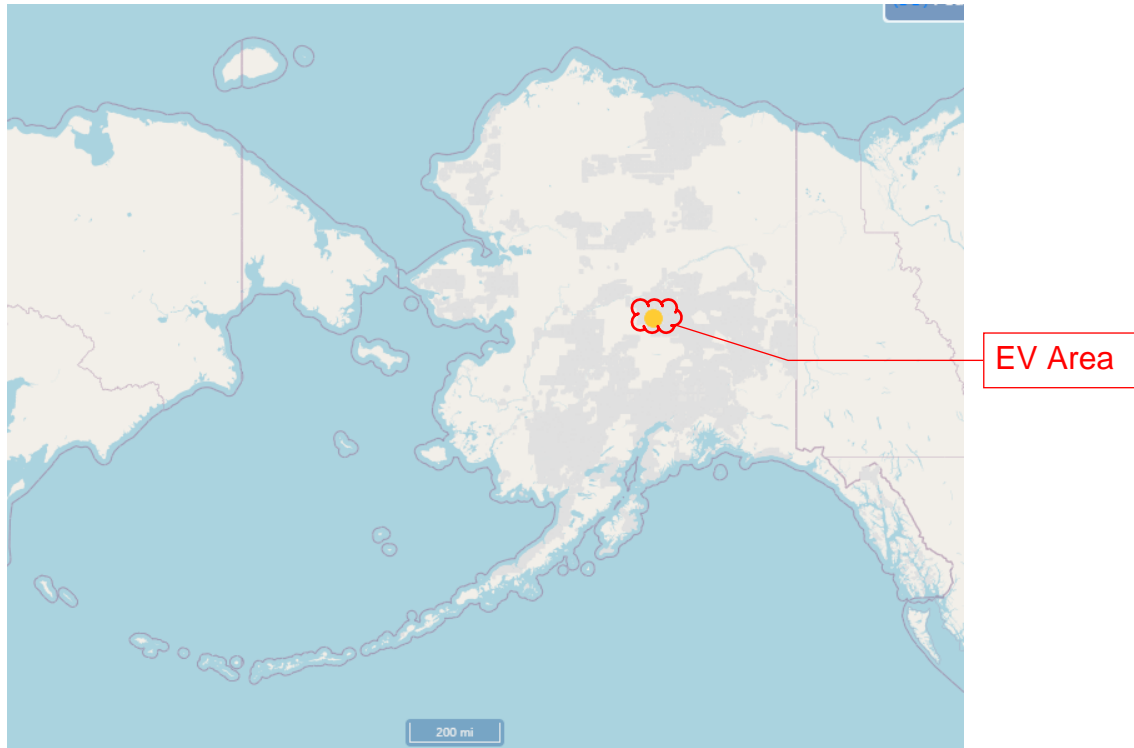
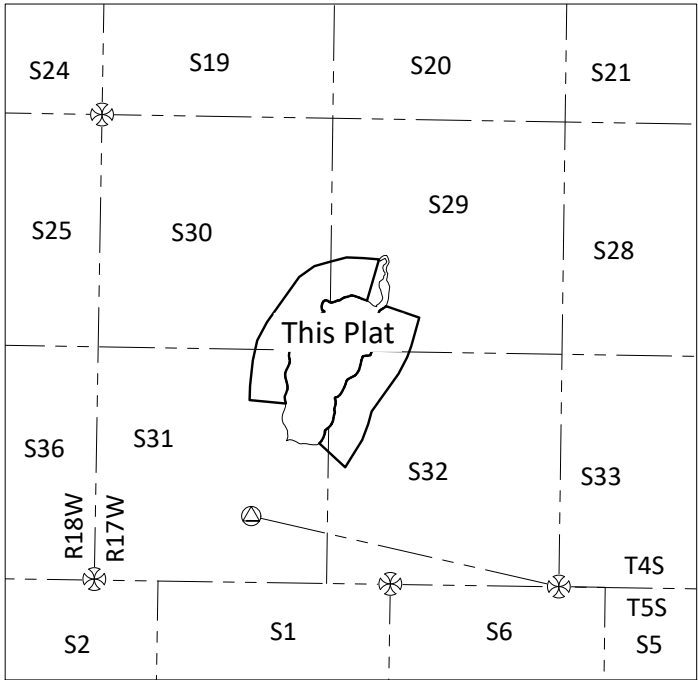


EV 3-345 Attachment A

T. 4 S, R. 17 W, Fairbanks Meridian, Alaska

Sections 29, 30, 31, 32





Preliminary  
02/13/2024 2:41:53 PM

SECTION LINE EASEMENT VACATION CERTIFICATE APPROVAL  
RECOMMENDATIONS

STATE OF ALASKA DEPT. OF TRANSPORTATION & PUBLIC FACILITIES

The vacation statement, as shown hereon, has been reviewed by the Northern Regional office and is hereby recommended for approval by the commissioner.

Recommended by \_\_\_\_\_ Date \_\_\_\_\_  
Title: Chief, Planning & Administration

STATE OF ALASKA DIV. OF MINING, LAND & WATER

The vacation statement, as shown hereon, has been reviewed by the Division of Mining, Land & Water and is hereby recommended for approval by the commissioner.

Recommended by \_\_\_\_\_ Date \_\_\_\_\_  
Title: Director, Division of Mining, Land & Water

The State of Alaska, acting by and through the commissioner of the Department of Natural Resources and the Commissioner of the Department of Transportation & Public Facilities, does hereby state and declare that the State of Alaska vacates and releases all rights and title to any and all portions of section line easements for public highways reserved to it under A.S. 19.10.010. (Specific area delineated by diagonal hatching on this plat).

Date: \_\_\_\_\_ Approved: \_\_\_\_\_

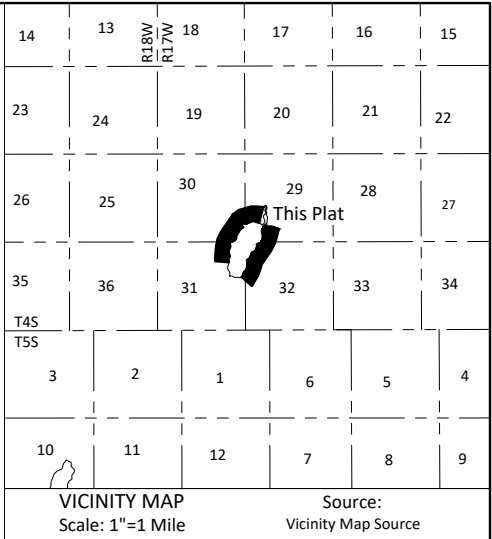
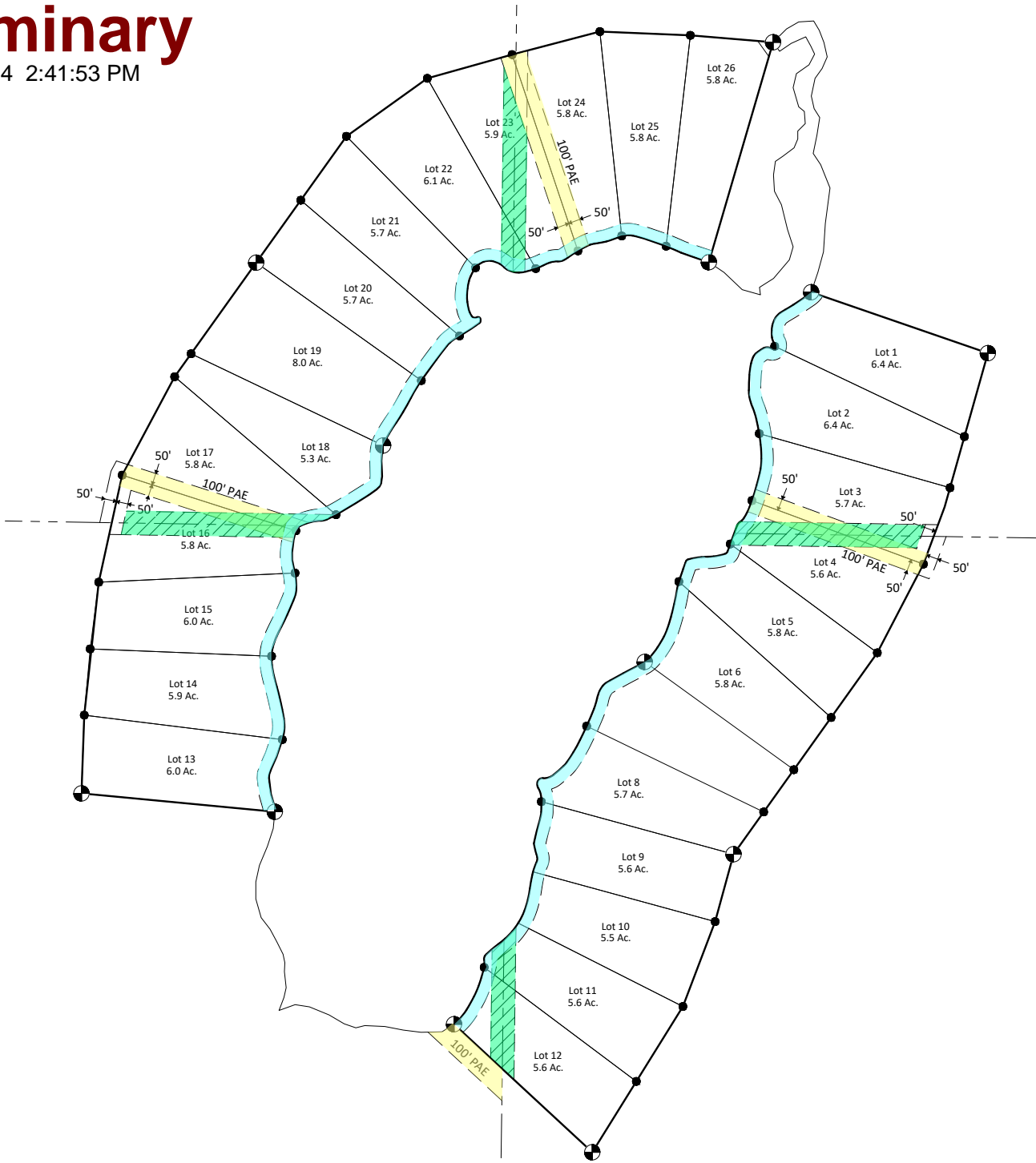
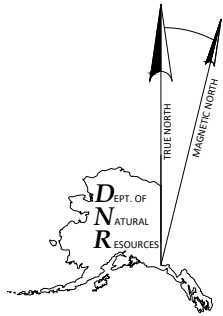
Commissioner  
Department of Transportation &  
Public Facilities

Date: \_\_\_\_\_ Approved: \_\_\_\_\_

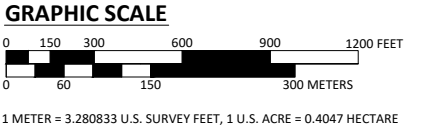
Commissioner  
Department of Natural Resources

NOTES:

- 1) This survey was accomplished in accordance with AS 38.04.045, GSC 846, and SSI ASLS 2020-44.
- 2) All bearings shown are the true bearings as oriented to the Basis of Bearing and the distances show are reduced to horizontal field distances.
- 3) The error of closure of this survey does not exceed 1:5000, and/or corner positions have a Relative Positional Accuracy at the 95 percent confidence level of 0.13 feet plus 100 ppm.
- 4) All parcels of land owned by the State of Alaska, located within 50 ft. of, or bisected by, a surveyed or protracted section line, are subject to a fifty ft. (50') easement, each side of the section line, which is reserved to the State of Alaska for public highways under A.S. 19.10.010.
- 5) Diagonally hatched area indicates portions of the section line easements being vacated within Sections 29, 30, 31, and 32 T4S, R17W, Fairbanks Meridian. It is not the intent of this plat to vacate any other dedicated public rights-of-way or easements.
- 6) This section line easement vacation is in compliance with the final decision EV-3-??? approved ?? Month 2021.
- 7) Alternate public access and utility easements are dedicated or reserved as shown.
- 8) The easement side lines shall be extended or shortened to meet at the angle points and terminate at the parcel boundaries.
- 9) Parcels may contain wetlands. A U.S. Army Corps of Engineers Wetland Permit may be required to develop any wetland areas.
- 10) The natural meanders of the ordinary high water (OHW) form the true bounds of the waterfront boundaries. The approximate line of OHW, as shown, is for area computations only, with the true corners being on the extension of the sidelines and their intersection with the natural meanders.
- 11) In accordance with AS 38.05.127 there is a 50 ft. access easement upland and abutting the OHW



- LEGEND**
- FOUND BLM/GLO MONUMENT - 2 1/2" DIA. BRASS CAP ON 2" IRON PIPE UNLESS OTHERWISE NOTED
  - BLM/GLO MONUMENT OF RECORD
  - SET PRIMARY MONUMENT-3/4" DIA. ALUM. CAP ON 30" LONG 2 1/2" DIA. ALUM. POST WITH MAGNET
  - FOUND PRIMARY MONUMENT-3/4" DIA. ALUM. CAP ON 2 1/2" DIA. ALUM. POST WITH MAGNET UNLESS OTHERWISE NOTED
  - SECONDARY MONUMENT SET THIS SURVEY
  - GEODETIC CONTROL MONUMENT RECOVERED
  - GEODETIC CONTROL MONUMENT OF RECORD
  - SECTION LINE EASEMENTS PROPOSED FOR VACATION
  - OHW
  - ORDINARY HIGH WATER
  - (R) (REC) RECORD PER PLAT NO. XXXX
  - (C) (CALC) COMPUTED
  - (M) (MEAS) MEASURED
  - ALTERNATE ACCESS Public Access Easements
  - 50 FOOT Public Access Easement along OHW



EV 3-345 Attachment A

T. 4 S, R. 17 W, Fairbanks Meridian, Alaska  
Sections 29, 30, 31, 32

DATE OF SURVEY: BEGINNING: MM/DD/YYYY ENDING: MM/DD/YYYY	SURVEYOR: DNR, DMLW, SURVEY SECTION 550 W. 7TH AVE, SUITE 650 ANCHORAGE, AK 99501-3576
STATE OF ALASKA DEPARTMENT OF NATURAL RESOURCES DIVISION OF MINING, LAND, AND WATER ANCHORAGE, ALASKA	
Alaska State Land Survey No. 2020-44	
Habanero Lake Subd. Located in Sections 29-32 Township 4 South, Range 17 West Fairbanks Meridian Manley Hot Springs Recording District	
DRAWN BY: CB DATE: 15 Jan 21	DNR APPROVAL RECOMMENDED STATEWIDE PLATTING SUPERVISOR DATE
SCALE: 1" = 300'	CHECKED BY: XXX SHEET: # OF # FILE NO. ASLS 20200044/EV-3-345