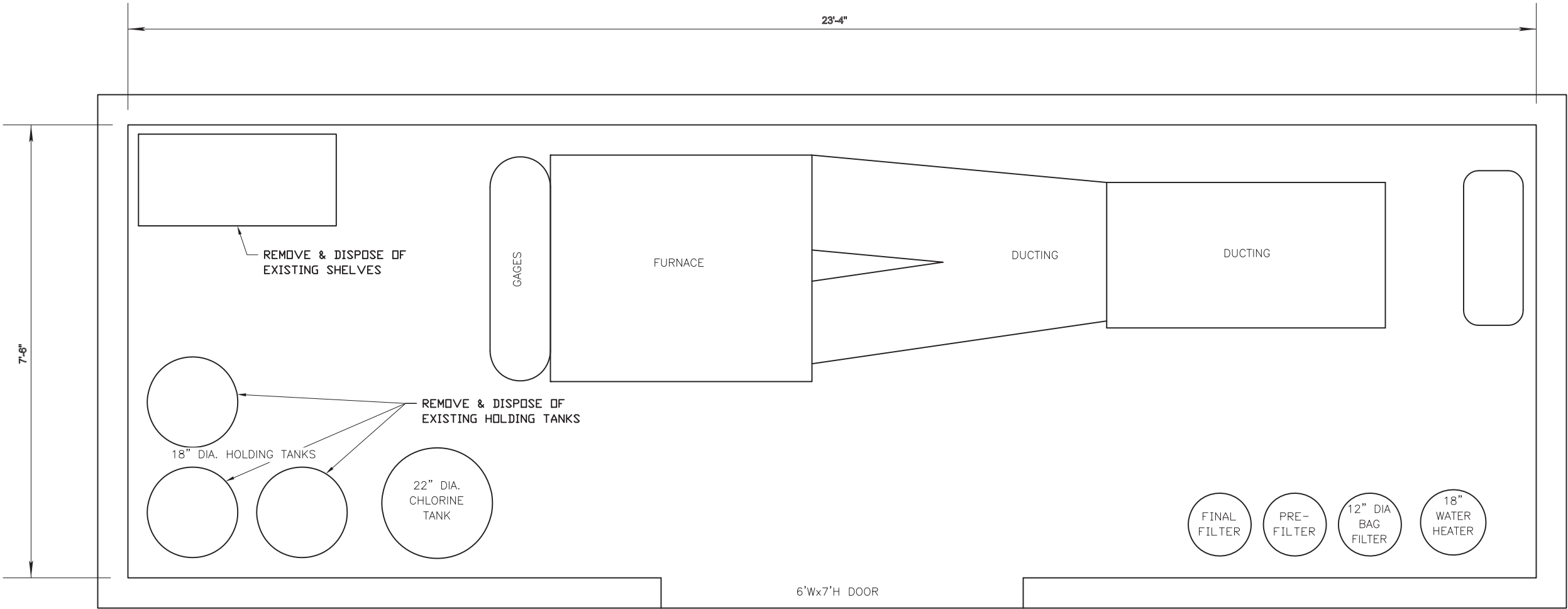
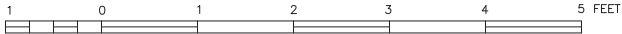


E:\GDM\2CAD\SEAKA\HAINES\FERRY TERMINAL\FIG.1.DWG 3/31/2018 12:40:08 PM AST



- 1.PROJECT SUMMARY: CONTRACTOR IS TO REMOVE AND DISPOSE OF 3 STEEL PRESSURE TANKS AND REPLACE THEM WITH 2 HIGH DENSITY POLYETHYLENE TANKS AND 2 WATER BOOSTER PUMPS FOR THE HAINES FERRY TERMINAL WATER SYSTEM.
- 2.THIS IS A DRINKING WATER SYSTEM. ALL PIPING, FITTINGS, EQUIPMENT, TANKS, PUMPS ETC. MUST BE NSF 61 LISTED. ALL BRASS OR BRONZE FITTINGS, VALVES, PIPING ETC. MUST MEET THE DEFINITION OF "LEAD FREE" AND BE NSF 372 LISTED.
- 3.THE CONTRACTOR SHALL PROVIDE ALL LABOR, EQUIPMENT, TOOLS AND MATERIALS NECESSARY TO INSTALL ALL EQUIPMENT, PIPING, FITTINGS, VALVES, PIPE SUPPORTS, TANKS, PUMPS AND OTHER MISCELLANEOUS ITEMS IN ACCORDANCE WITH THE EQUIPMENT MANUFACTURER'S REQUIREMENTS AND AS SHOWN ON THE PLANS.
- 4.THE CONTRACTOR SHALL COORDINATE THE ASSEMBLY AND FABRICATION OF THE PIPING, VALVES AND FITTINGS AND THEIR CONNECTION TO EQUIPMENT TO ENSURE THE COMPLETED ASSEMBLY MEET THE REQUIREMENTS OF THE MANUFACTURERS AND RESULT IN A COMPLETE AND OPERATING SYSTEM.
- 5.PROVIDE METAL VALVE IDENTIFICATION TAGS FOR EACH VALVE AS INDICATED ON THE PLANS.
- 6.ALL PIPING SHALL BE PRESSUIZED TO 100 PSI AND INSPECTED FOR ANY LEAKS. ANY LEAKS DISCOVERED SHALL BE REPAIRED AND THE SYSTEM RETESTED UNTIL NO LEAKS ARE EVIDENT.
7. THE ENTIRE SYSTEM SHALL BE DISINFECTED IN ACCORDANCE AWWA 651 WITH CHLORINE THAT IS NSF 60 LISTED. CHLORINATE THE SYSTEM WITH A 25 MG/L CHLORINE SOLUTION FOR 24 HOURS. FLUSH THE SYSTEM AND ALLOW IT TO STAND UNUSED FOR A MINIMUM OF 16 HOURS. ALLOW WATER TO RUN AND TAKE TWO BACTERIOLOICAL SAMPLES COLLECTED 15 MINUTES APART. IF BOTH SAMPLES ARE NEGATIVE, THE SYSTEM IS READY FOR USE. IF EITHER SAMPLE IS POSITIVE, REFLUSH SYSTEM AND REPEAT THE BACTERIOLOGICAL TESTING PROCEDURE. IF EITHER SAMPLE IS POSITIVE, REPEAT DISINFECTION PROCEDURE UNTIL BOTH BACTERIOLOGICAL SAMPLES AE NEGATIVE.
8. ALL WORK SHALL BE DONE IN A NEAT WORKMAN LIKE MANOR. CONTRACTOR SHALL CLEAN UP AND DISPOSE OF ALL DEBRIS REMAINING AFTER CONSTRUCTION.
9. ALL FLUX, SOLDER, AND PIPE SHALL BE LEAD FREE.
10. CONTRACTOR SHALL REMOVE AND DISPOSE OF PIPING AND VALVES ASSOCIATED WITH THE EXISTING HOLDING TANKS, HOLDING TANKS AND SHELVES ALONG WITH OTHER MISCELLANEOUS ITEMS AS DIRECTED.
11. CONTRACTOR SHALL FURNISH AND INSTALL PIPING, VALVES AND FITTINGS AS SHOWN SCHEMATICALLY ON THE PLANS. FURNISH AND INSTALL OTHER FITTINGS AND ADAPTERS AS NECESSARY TO CONNECT TO EXISTING PIPING, EXISTING EQUIPMENT AND NEW TANKS AND PUMPS.
12. TANKS SHALL BE NOWESCO, INC. 210 GALLON HIGH DENSITY POLYETHYLENE TANKS (32" DIA. X 66" H) THAT ARE NSF 61 LISTED OR APPROVED EQUAL. CONTACT: WARD CREEK INDUSTRIAL, KETCHIKAN, AK (888) 455-9410 ATTN: CRYSTAL DESPAIN.
13. FLOAT VALVES SHALL BE KERICK VALVE INC. 1" NSF 61 LISTED BULKHEAD MOUNT FLOAT VALVES WITH THREADED OUTLET AND STAINLESS-STEEL FLOAT ROD WITH FLOAT OR APPROVED EQUAL.
14. PUMPS SHALL BE NSF 61 LISTED GRUNDFOS SCALA2 3-45 115 V, 60 HZ, FULLY INTEGRATED, SELF-PRIMING WATER PRESSURE BOOSTER PUMPS WITH INTEGRATED SPEED CONTROL FOR CONSTANT PRESSURE OUTPUT, TANK, SENSORS AND NON-RETURN VALVES OR APPROVED EQUAL. PUMP SHALL HAVE AUTOMATIC STOP IN THE EVENT OF DRY RUNNING, WATER SHORTAGE, EXCESSIVE TEMPERATURE OR BLOCKED PUMP. PUMP SHALL BE FURNISHED WITH AUTOMATIC RESET AND RESTARTING. CONTACT: DXP/ALASKA PUMP AND SUPPLY INC., ANCHORAGE, AK (907) 563-3424 ATTN: RANDY MOON.
15. ATTACH PUMPS TO FLOOR WITH STAINLESS STEEL ANCHOR BOLTS.
16. CONTRACTOR TO FURNISH AND INSTALL GALVANIZED UNISTRUT SUPPORT FOR COPPER PIPING. CONTRACTOR TO FURNISH AND INSTALL ALL ACCESSORIES INCLUDING RUBBER GASKET TO ISOLATE COPPER PIPING FROM UNISTRUT.



REV	DATE	BY	DESCRIPTION	SCALE	GRAPHIC
				DESIGNED	JLD
				DRAWN	GDM
				CHECKED	JLD
				DATE	3/31/2017

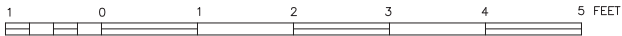
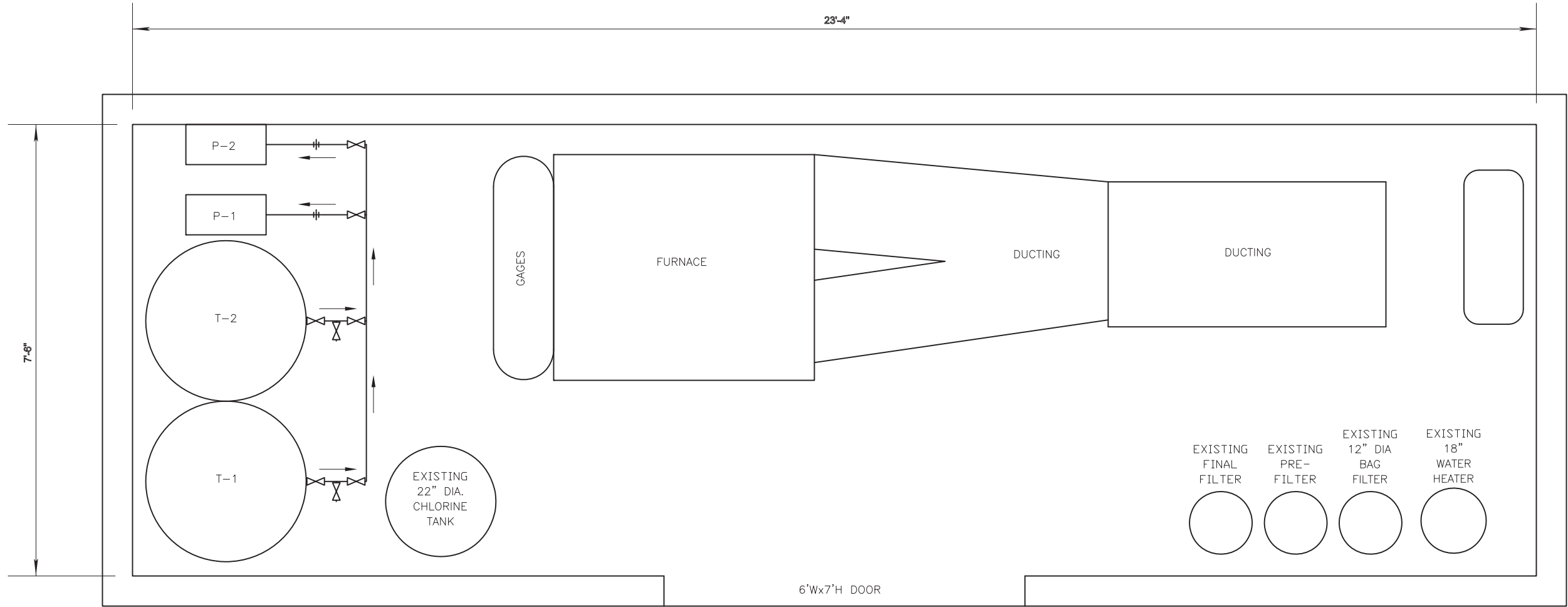
EXISTING LAYOUT AND CONSTRUCTION NOTES

712 WEST 12TH STREET
JUNEAU, ALASKA 99801
(907) 586-4447

ALASKA MARINE HIGHWAY SYSTEM
2018 HAINES TERMINAL
WATER IMPROVEMENTS

DRAWING
Figure 1
SHEET No.
1 of 5

E:\GDM\20CAD\SEAKA\HAINES\FERRY TERMINAL\FIG. 2.DWG 3/31/2018 12:40:08 PM AST



REV	DATE	BY	DESCRIPTION

SCALE	GRAPHIC
DESIGNED	JLD
DRAWN	GDM
CHECKED	JLD
DATE	3/31/2018

NEW LAYOUT



Carson Dorn Inc.

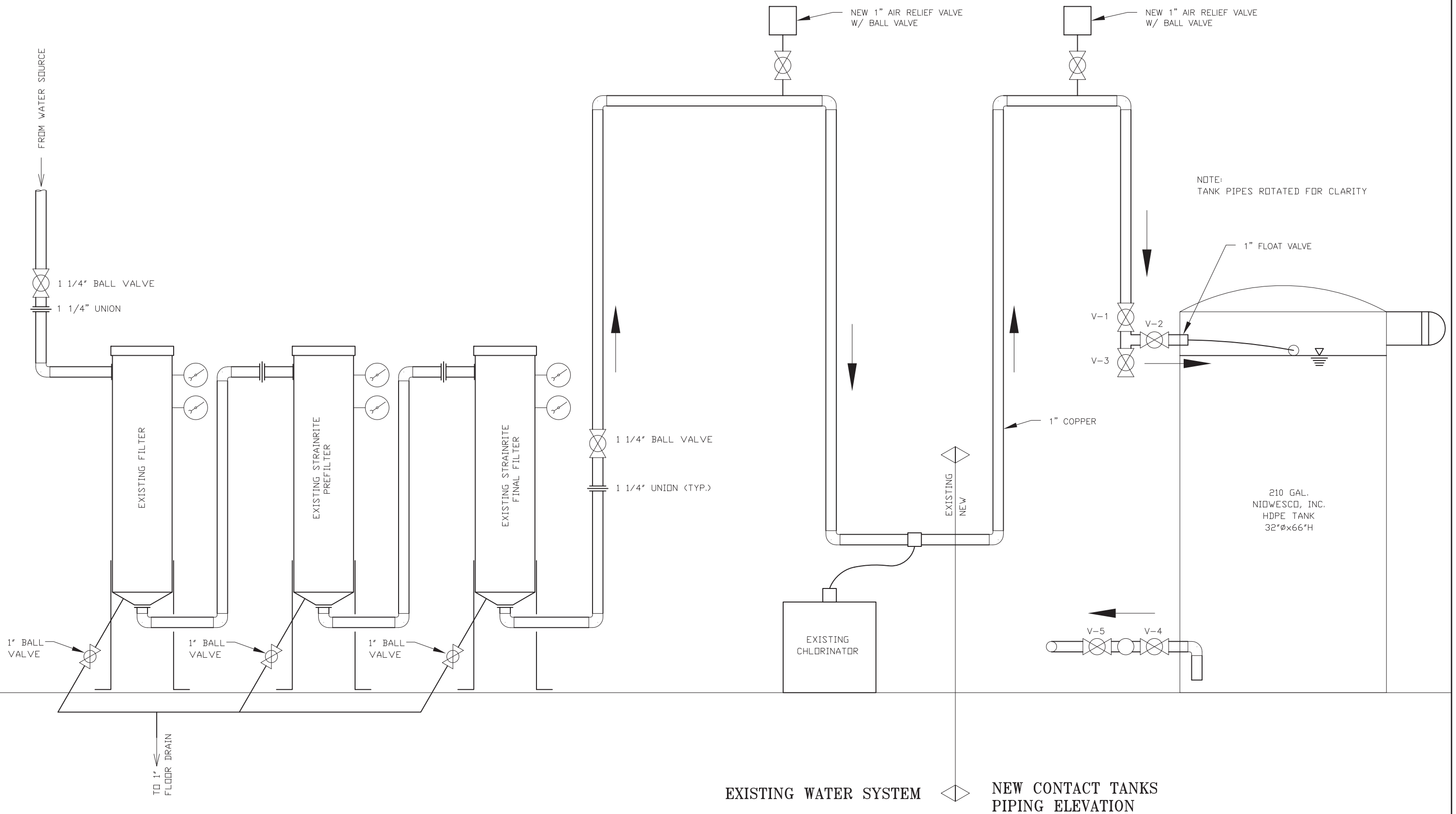
712 WEST 12TH STREET
JUNEAU, ALASKA 99801
(907) 586-4447

ALASKA MARINE HIGHWAY SYSTEM
2018 HAINES TERMINAL
WATER IMPROVEMENTS

DRAWING
Figure 2
SHEET No.
2 of 5

3/31/2018 12:40:08 PM AST

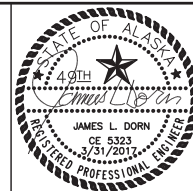
E:\GDM\20AD\SE-AL\HAINES\FERRY TERMINAL\FIG. 3.DWG



REV	DATE	BY	DESCRIPTION

SCALE	GRAPHIC
DESIGNED	JLD
DRAWN	GDM
CHECKED	JLD
DATE	3/31/2018

PIPING ELEVATION



Carson Dorn Inc.

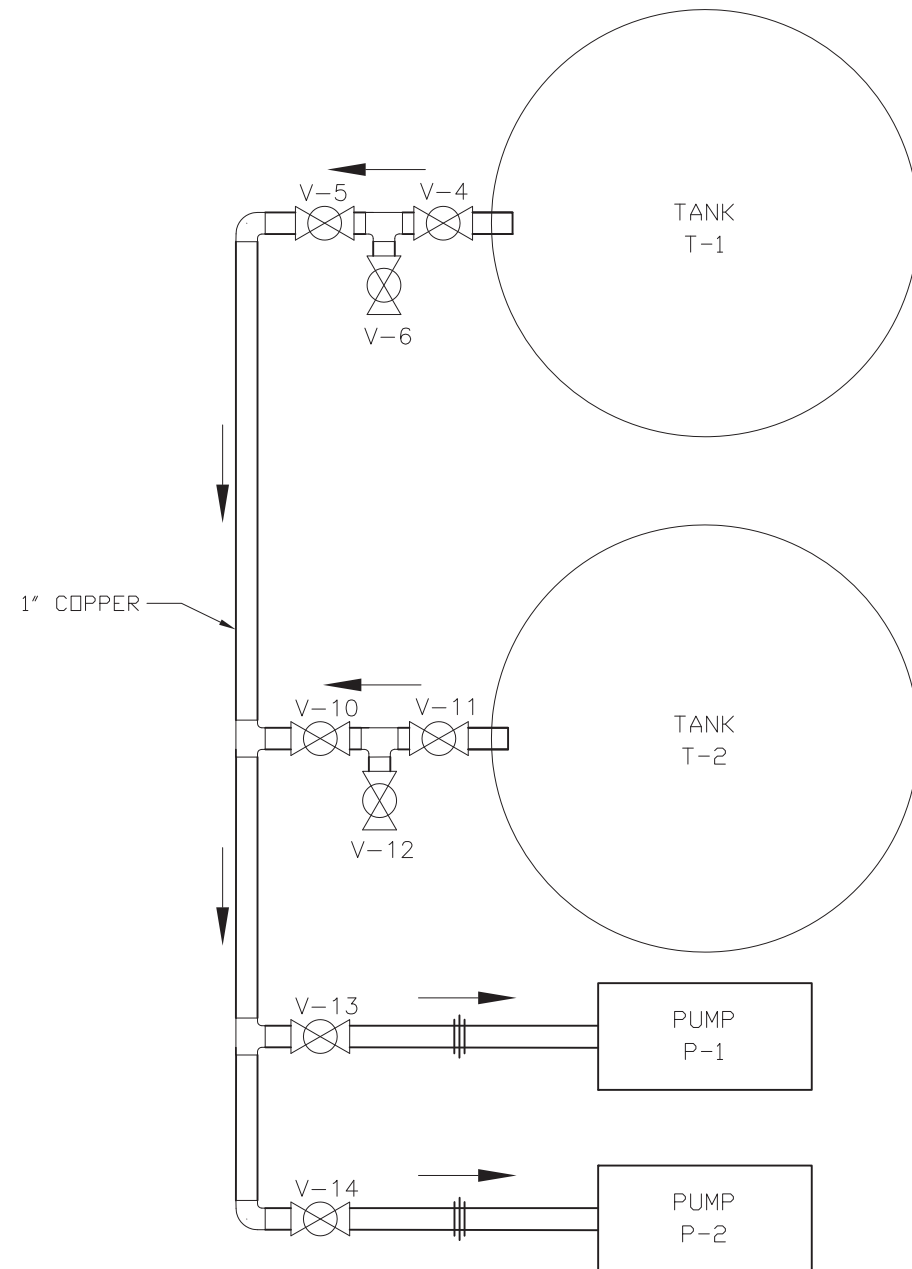
712 WEST 12TH STREET
JUNEAU, ALASKA 99801
(907) 586-4447

ALASKA MARINE HIGHWAY SYSTEM
2018 HAINES TERMINAL
WATER IMPROVEMENTS

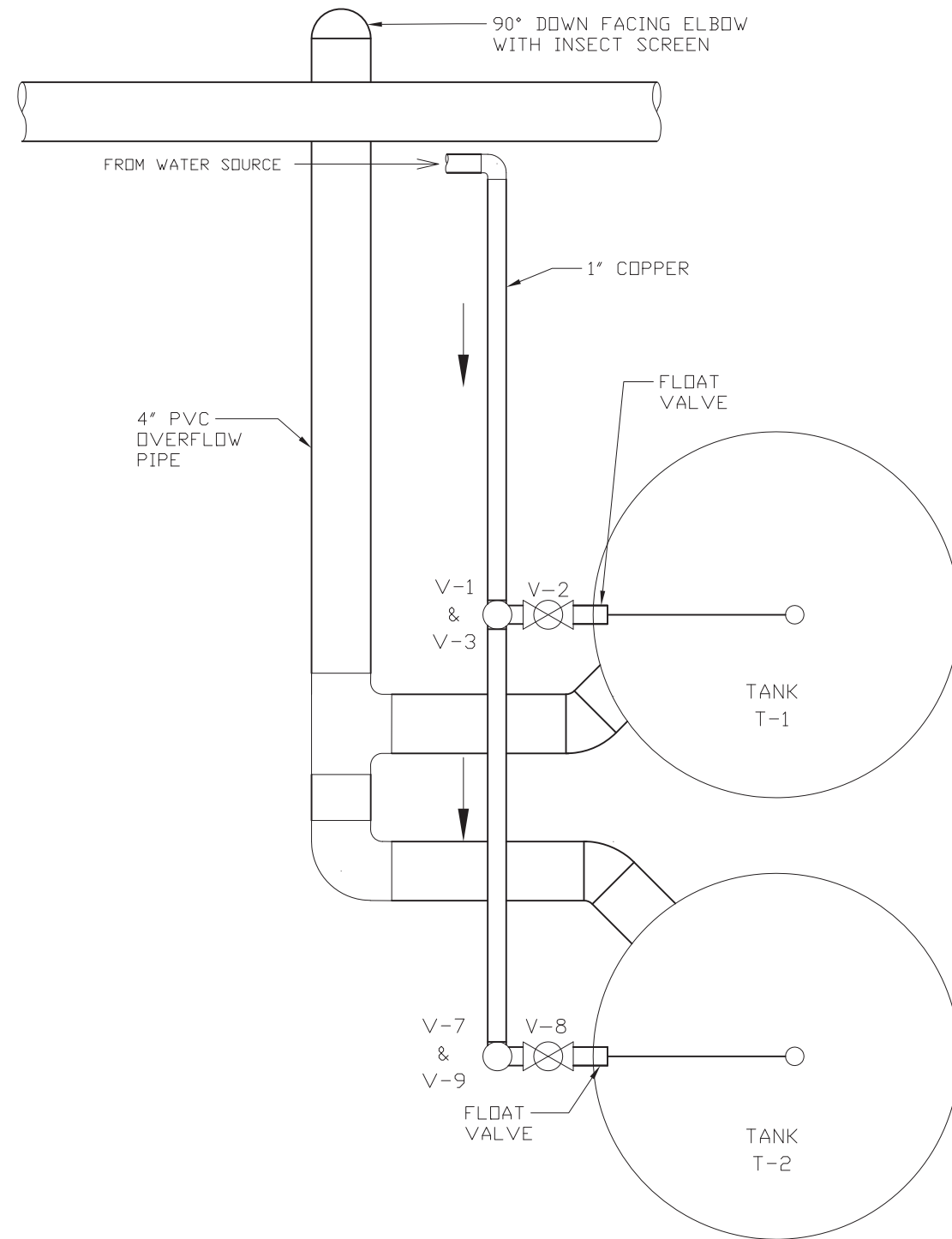
DRAWING
Figure 3

SHEET No.
3 of 5

3/31/2018 12:40:08 PM AST
E:\GDM\20AD\25E-AK\HAINES\FERRY TERMINAL\FIG. 4.DWG



TANK OUTLET PIPING PLAN VIEW



TANK INLET PIPING PLAN VIEW

SCALE	GRAPHIC
DESIGNED	JLD
DRAWN	GDM
CHECKED	JLD
DATE	3/31/2018

REV	DATE	BY	DESCRIPTION

PIPING PLAN



Carson Dorn Inc.

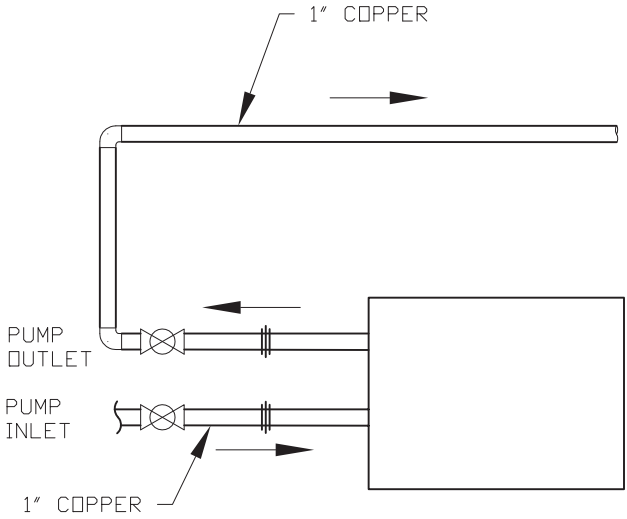
712 WEST 12TH STREET
JUNEAU, ALASKA 99801
(907) 586-4447

ALASKA MARINE HIGHWAY SYSTEM
2018 HAINES TERMINAL
WATER IMPROVEMENTS

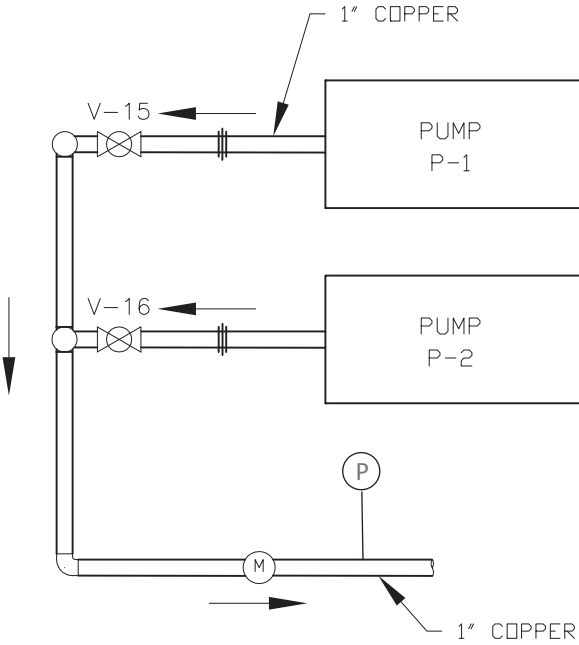
DRAWING
Figure 4
SHEET No.
4 of 5

3/31/2018 12:40:08 PM AST

E:\GDM\20AD\ASE-AK\HAINES\FERRY TERMINAL\FIG_5.DWG



PUMP PIPING ELEVATION



PUMP OUTLET PIPING PLAN VIEW

REV	DATE	BY	DESCRIPTION

SCALE	GRAPHIC
DESIGNED	JLD
DRAWN	GDM
CHECKED	JLD
DATE	3/31/2018

--

PUMP PIPING



**Carson Dorn Inc.**
712 WEST 12TH STREET
JUNEAU, ALASKA 99801
(907) 586-4447

ALASKA MARINE HIGHWAY SYSTEM 2018 HAINES TERMINAL WATER IMPROVEMENTS
--

DRAWING Figure 5
SHEET No. 5 of 5