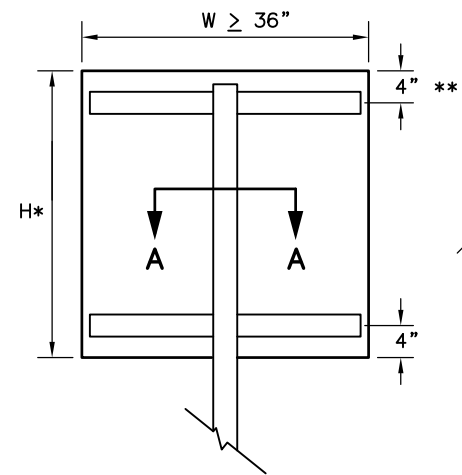


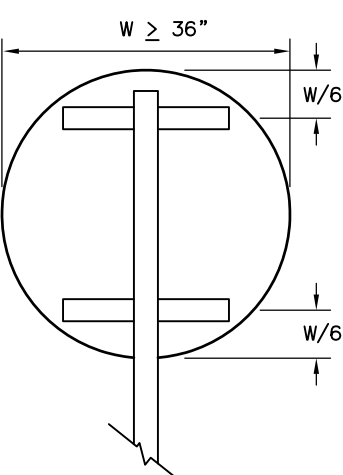
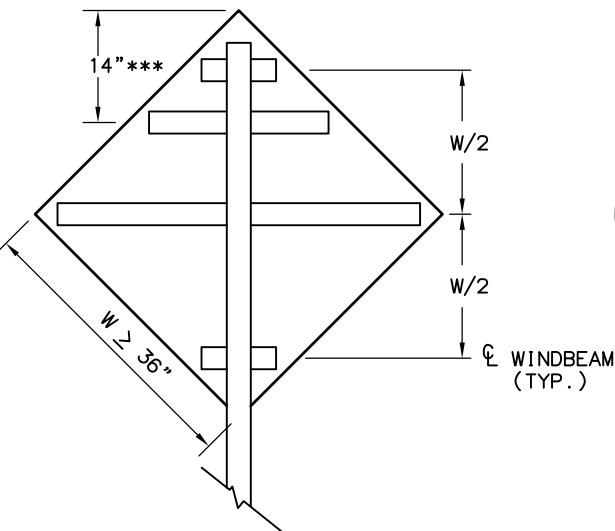
DESIGNED BY: CMW/CSB
CHECKED BY: CMW/CSB
DRAFTED BY: MF
XREF'S: X_Border-Def.gll
N/A
SCALE: N/A
LAYOUT: H28
DATE: 12/1/2015 1:46 PM
DRAWING LOCATION: T:\Projects\Regional Details\CI\3D\Plonset\429-30_SIGN-ATTACHMENT-DETAILS.dwg

LAST REVISION	
DATE	DESCRIPTION
12/01/2015	CENTRAL REGION DETAIL - THESE DETAILS SUPERSEDE ONLY THE LIGHT SIGN FRAMING DETAILS AND SIGN POST SPACING NOTE 2.B. ON STD. DWG. S-00.11, AND ENTIRELY REPLACES STD. DWG. S-01.00

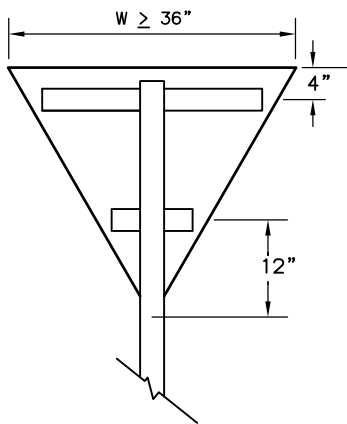
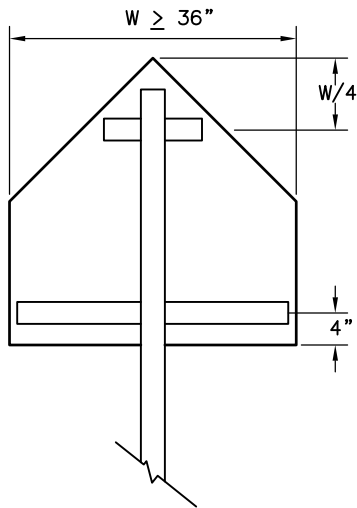
STATE	PROJECT DESIGNATION	YEAR	SHEET NO.	TOTAL SHEETS
ALASKA	PROJECT NUMBER	20##	H28	H##



RECTANGLES AND TRAPEZOIDS



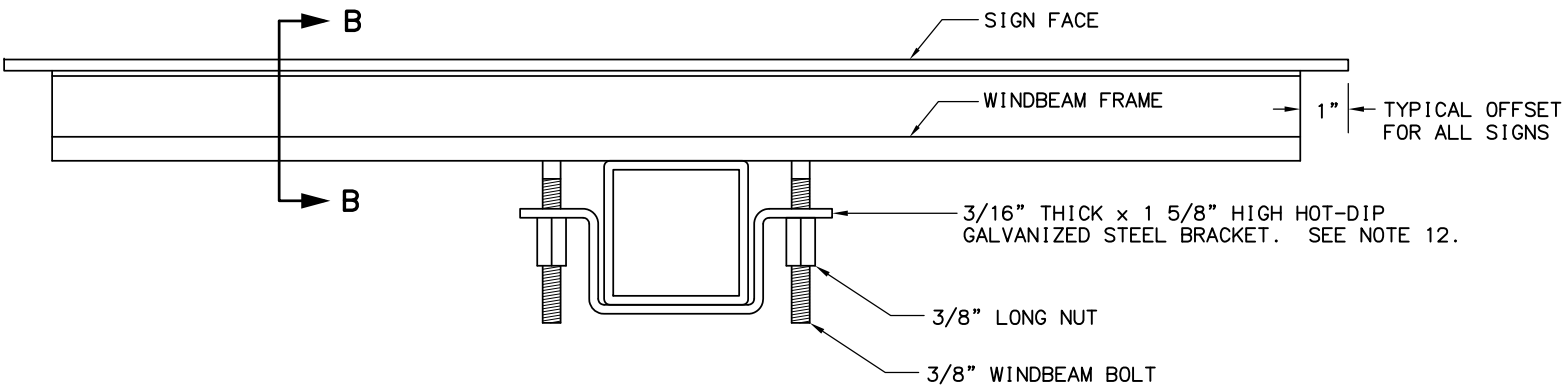
ROUNDS AND OCTAGONS



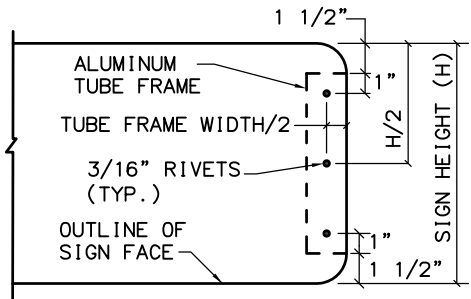
* WHEN H > 42 INCHES, INSTALL A 3RD WINDBEAM CENTERED ON THE SIGN.
** FOR S5-1 SIGNS MOUNTED ON FLASHING BEACON POSTS, USE A 10" OFFSET. OTHERWISE, USE 4".

*** FOR WARNING SIGNS MOUNTED ON FLASHING BEACON POSTS, USE THE 14" OFFSET. OTHERWISE, USE W/2.

WINDBEAM LOCATIONS FOR EACH SIGN SHAPE
ELEVATION VIEW

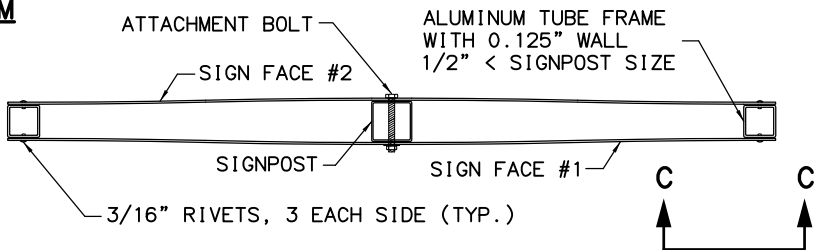


SECTION A - A TYPICAL SIGN ATTACHMENT DETAILS AT EACH WINDBEAM

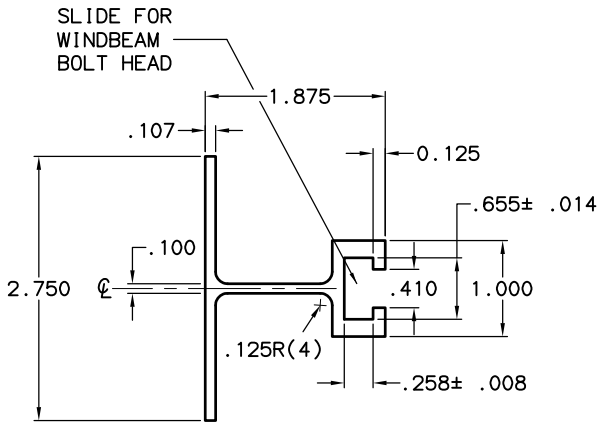


VIEW C - C

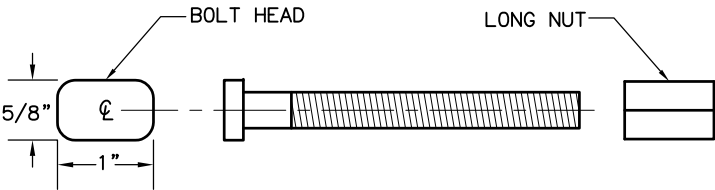
- NOTES:**
- EXCEPT FOR POLES AND MAST ARMS, ONLY USE SQUARE STEEL TUBES TO SUPPORT SIGNS MOUNTED ON SINGLE POSTS.
 - INSTALL WINDBEAM OR ZEE SHAPED FRAMING MEMBERS ON DIAMOND SHAPED SIGNS 36 INCHES AND LONGER ON A SIDE AND ON OTHER SIGNS 36 INCHES WIDE AND WIDER.
 - IN HIGH WIND AREAS, THE PLANS MAY REQUIRE SIGNS SMALLER THAN THOSE LISTED IN NOTE 2 BE FRAMED AS SHOWN HERE IN.
 - THIS DRAWING DEPICTS THE WINDBEAM FRAMING AND ATTACHMENT SYSTEM. ATTACH SIGNS FRAMED WITH ZEE SHAPED FRAMING ACCORDING TO REGIONAL DRAWING "SIGN ATTACHMENT DETAILS", USING "U" SHAPED BRACKETS AND TWO BOLTS WITH NUTS.
 - THE ENGINEER MAY APPROVE OTHER FRAMING MEMBERS. SUBMIT DOCUMENTS THAT DETAIL THE FRAME'S CROSS SECTION AND STRENGTH, AND METHOD OF ATTACHING THE FRAME TO A POST.
 - USE FRAMING MEMBERS MADE FROM ALUMINUM ALLOY 6061-T6.
 - EACH FRAMING MEMBER SHALL BE ONE CONTINUOUS PIECE.
 - ATTACH FRAMING MEMBERS TO THE SIGN PANELS WITH RIVETS OR AN ENGINEER APPROVED, DOUBLE SIDED, HIGH STRENGTH, ADHESIVE TAPE.
 - WITH THE ADHESIVE TAPE, INSTALL TWO RIVETS IN BOTH ENDS OF EACH FRAMING MEMBER, AND ATTACH THE FRAMING MEMBERS TO THE SIGN PANELS ACCORDING TO THE TAPE MANUFACTURER'S WRITTEN INSTRUCTIONS, INCLUDING:
A. THE CLEANING AND HANDLING OF THE SIGN PANELS AND FRAMING MEMBERS.
B. THE APPLICATION OF THE ADHESIVE TAPE.
 - WHEN RIVETS ARE USED TO ATTACH FRAMING MEMBERS, INSTALL 2 RIVETS IN EACH END AND THE BALANCE ON 8" MAXIMUM CENTERS.
 - USE 3/16" DIAMETER RIVETS CONFORMING TO ALUMINUM ALLOY 6061-T6 FOR COLD DRIVEN RIVETS, OR ALUMINUM ALLOY 6061-T43 FOR HOT DRIVEN RIVETS.
 - THE BRACKETS USED ON EVEN INCH SIZE TUBES MAY ALSO BE USED ON TUBES 1/2" SMALLER IN SIZE.
 - USE ONE 2.5" P.T. FOR ALL STOP SIGNS WITHIN THE MOA, AND ALL POSTS WITH A SINGLE SIGN PANEL THAT ARE 30" WIDE OR LESS. ALL OTHER STOP SIGN POSTS OUTSIDE THE MOA SHALL BE ON A 3" TUBE.



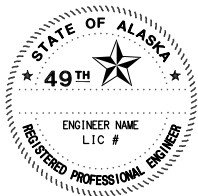
D3-1 STREET NAME SIGN FRAMING DETAIL
PLAN VIEW



SECTION B - B WINDBEAM CROSS SECTION



3/8" WINDBEAM BOLT AND LONG NUT



STATE OF ALASKA
DEPARTMENT OF TRANSPORTATION
AND PUBLIC FACILITIES
PROJECT NAME

**LIGHT SIGN FRAMING AND
ATTACHMENT DETAILS**