

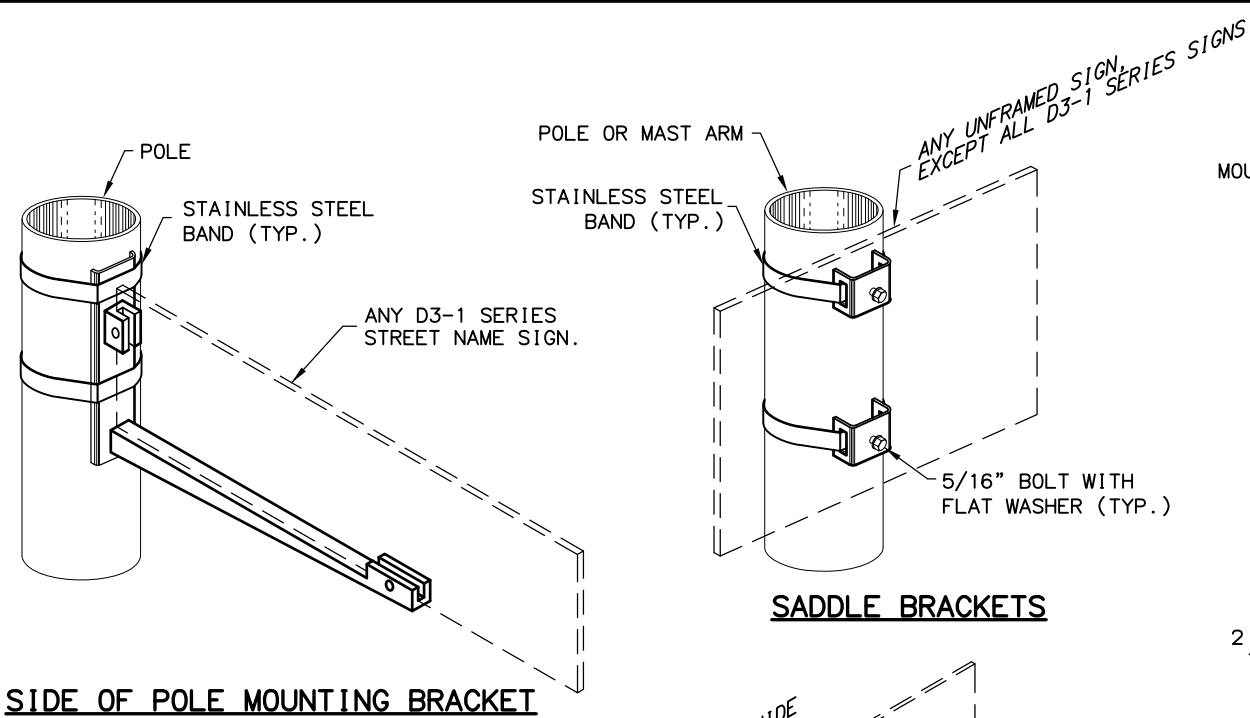
DESIGNED BY: CMW/CSB  
CHECKED BY: CMW/CSB  
DRAFTED BY: MEF  
XREF'S  
X-Ref: -De (g.l.)  
N/A  
SCALE  
N/A  
LAYOUT  
H27  
DATE  
TIME  
12/1/2015 1:46 PM  
DRAWING LOCATION  
T:\Projects\Regional\Details\CIV3D\Plans\H29-30\_SIGN-ATTACHMENT-DETAILS.dwg

LAST REVISION	
DATE	DESCRIPTION
12/01/2015	CENTRAL REGION DETAIL - REPLACES STD. DWG. S-20.10

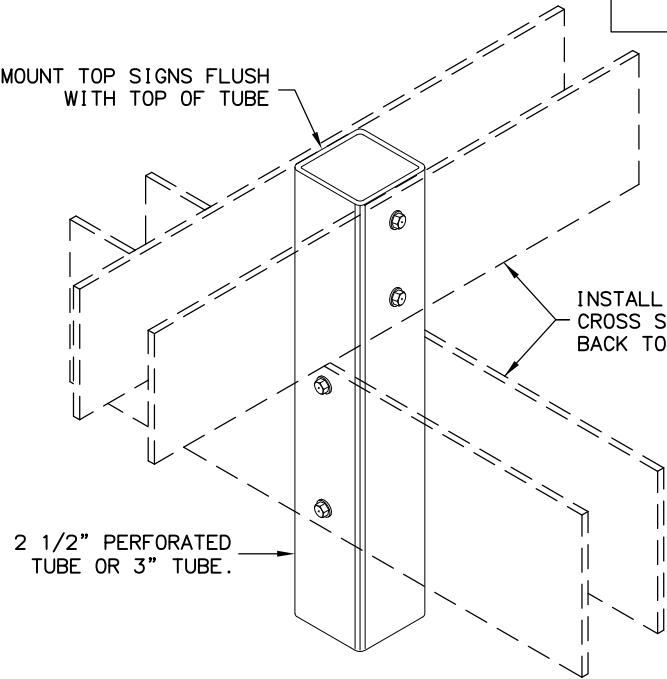
STATE	PROJECT DESIGNATION	YEAR	SHEET NO.	TOTAL SHEETS
ALASKA	PROJECT NUMBER	20##	H27	H##

NOTES:

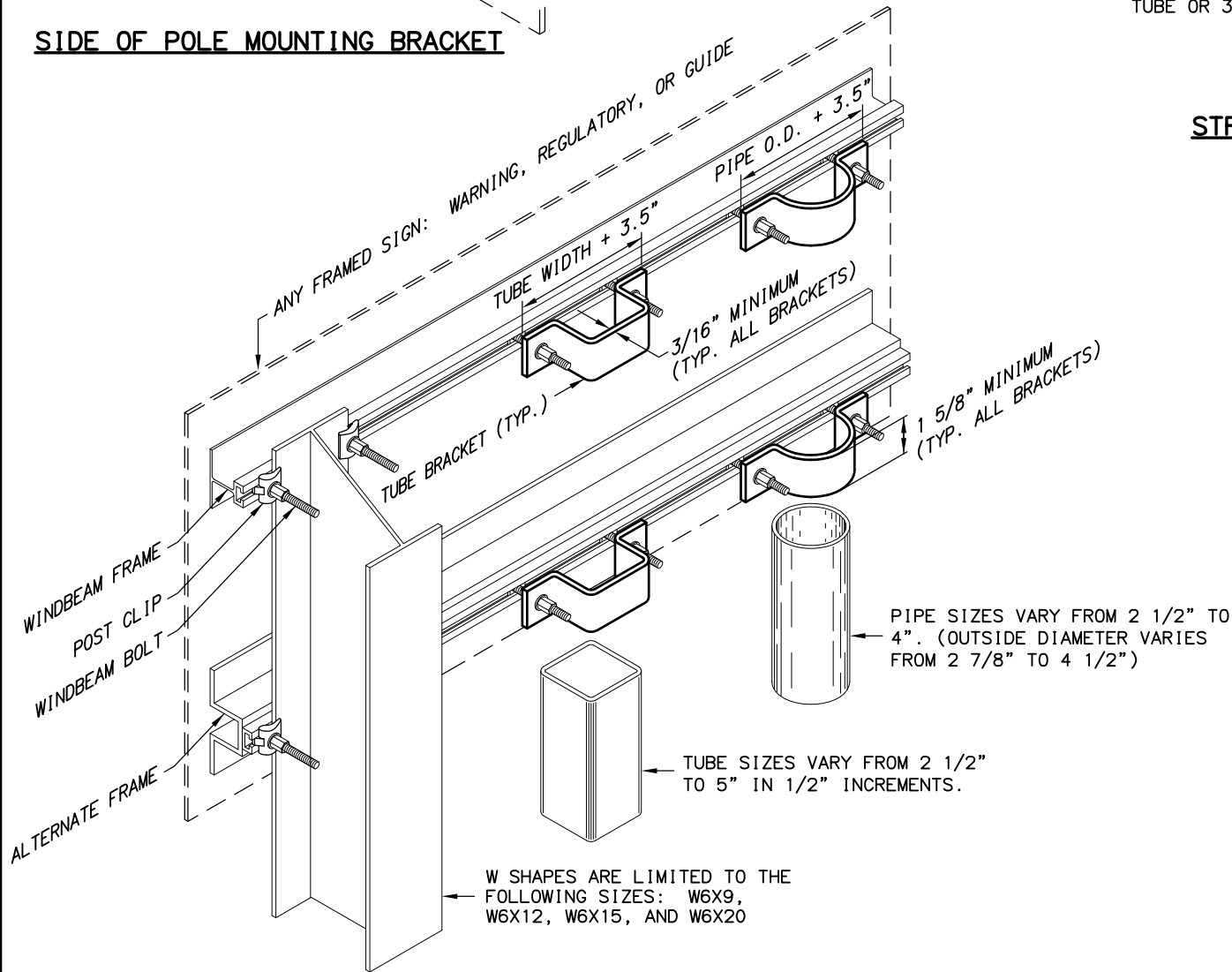
- EXCEPT FOR POLES AND MAST ARMS, ONLY USE TUBES TO SUPPORT SIGNS MOUNTED ON ONE POST.
- ATTACH SIGNS, FRAMED AND UNFRAMED TO THEIR SUPPORTS WITH ZINC PLATED 3/8" BOLTS, EXCEPT ATTACH UNFRAMED SIGNS TO PERFORATED TUBES WITH ACCESSORY DRIVE RIVETS AND TO SADDLES WITH 5/16" BOLTS.
- BOLT UNFRAMED SIGNS DIRECTLY TO TUBES IN TWO LOCATIONS, NEAR TOP AND NEAR BOTTOM OF MATING SURFACE. ATTACH THEM TO POLES AND MAST ARMS WITH TWO SADDLES.
- ATTACH BRACKETS TO POLES AND MAST ARMS WITH DOUBLE WRAPS OF 3/4" WIDE BY 0.020" THICK STAINLESS STEEL BANDING MATERIAL. TIGHTEN EACH BAND UNTIL IT STOPS MOVING THROUGH THE BUCKLE.
- ATTACH FRAMED SIGNS TO POSTS WHEREVER THE FRAMES CROSS THE POSTS. AT EACH CROSSING, ATTACH THE SIGN USING TWO POST CLIPS ON W-SHAPE POSTS, A U-SHAPED BRACKET ON PIPES, AND A BRACKET WITH SQUARE CORNERS ON TUBES.
- THE TUBE BRACKETS USED ON EVEN INCH SIZE TUBES MAY ALSO BE USED ON TUBES 1/2" SMALLER IN SIZE.
- ONLY USE THE SPECIAL WINDBEAM BOLTS TO ATTACH SIGNS FRAMED WITH THE WINDBEAM FRAMING MATERIAL.
- ATTACH FRAMED SIGNS TO POLES AND MAST ARMS USING POLE PLATES INSTALLED ACCORDING TO STANDARD DRAWING S-23.00
- FOR ROUTE MARKER TREES, CUT PERFORATED TUBES TO ENSURE TIGHT FITTING JOINTS. ASSEMBLE THE PIECES WITH ACCESSORY ELL-SHAPED ANGLE BRACKETS.
- INSTALL THE TOP EDGE OF SIGNS 1" ABOVE THE TOPS OF POSTS, EXCEPT FOR THE D3-1 STREET NAME SIGNS.
- INSTALL THE TOP EDGE OF SIGNS 3" BELOW THE TOP OF POST, WHENEVER THEY ARE MOUNTED BELOW SIGNS SECURED BY POST TOP MOUNTING BRACKETS.
- THE BRACKET DETAILS SHOWN INDICATE GENERAL DESIGNS ONLY. DESIGNS MAY VARY BY MANUFACTURER.
- INSTALL WEATHER TIGHT CAPS ON ALL PIPE AND TUBE POSTS, EXCEPT PERFORATED TUBING.



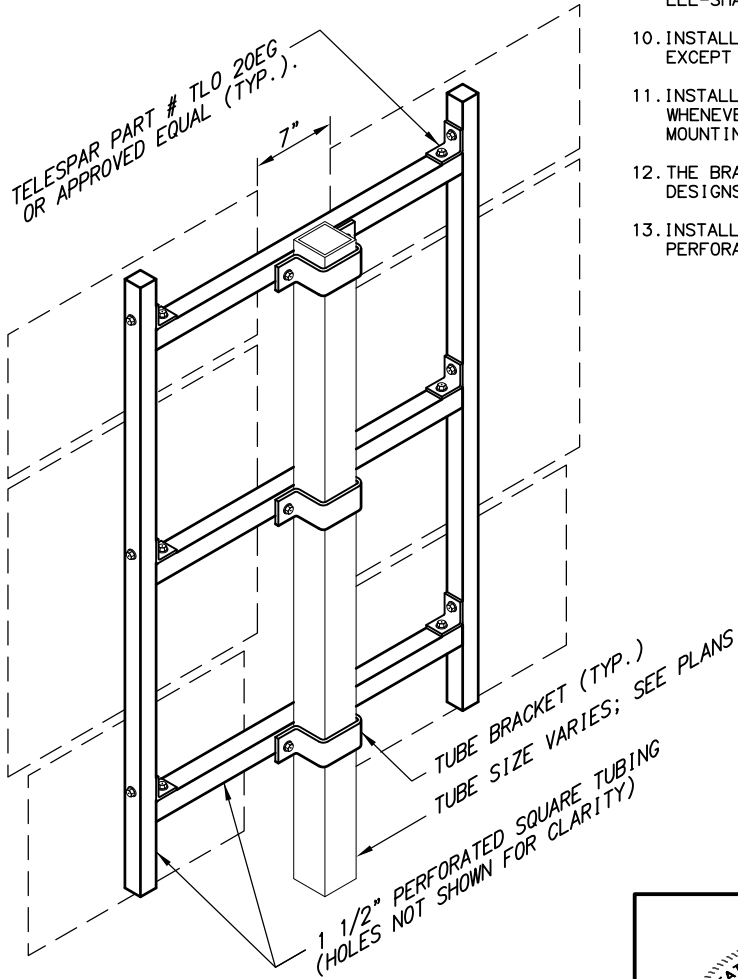
SIDE OF POLE MOUNTING BRACKET



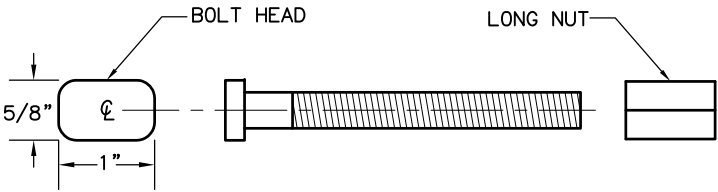
STREET NAME SIGN INSTALLATION



FRAMED SIGN ATTACHMENT BRACKETS

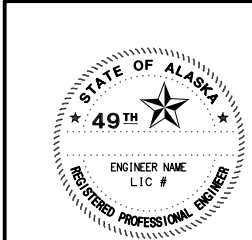


ROUTE MARKER TREE



3/8" WINDBEAM BOLT AND LONG NUT

FASTENER SPECIFICATION TABLE		
FASTENERS	STEEL	STAINLESS STEEL
BOLTS	ASTM A 307	ASTM F 593
NUTS	REGULAR LOCK	ASTM A 563 ASTM F 594
WASHERS	ASTM A 36	ASTM A 480
POST CLIPS		



STATE OF ALASKA  
DEPARTMENT OF TRANSPORTATION  
AND PUBLIC FACILITIES

PROJECT NAME

SIGN ATTACHMENT DETAIL